

1	
2	
3	
4	
5	
6	
7	
8	
9	
10	

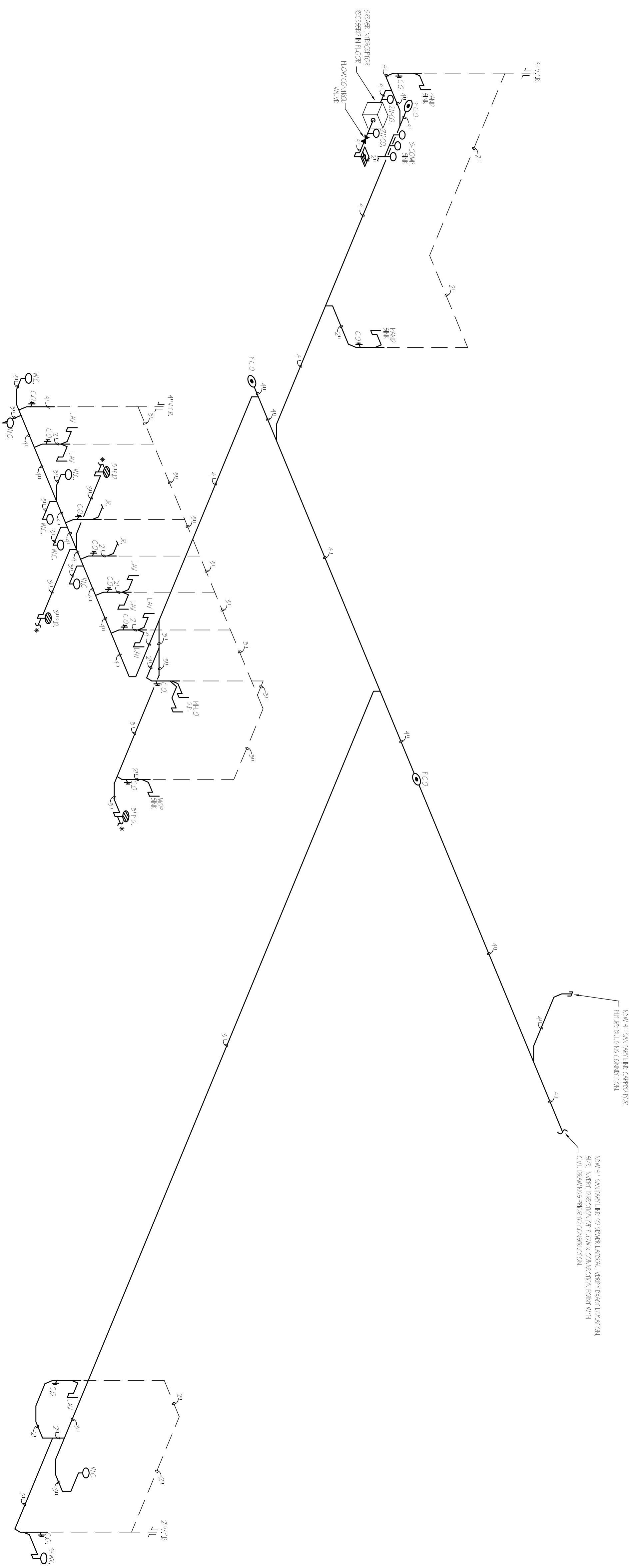
1. ALL WORK SHALL BE ACCORDING TO THE LATEST EDITION OF THE INTERNATIONAL BUILDING CODE (IBC) AND THE INTERNATIONAL MECHANICAL AND ELECTRICAL PLUMBING CODE (IMC).  
 2. ALL WORK SHALL BE ACCORDING TO THE LATEST EDITION OF THE INTERNATIONAL MECHANICAL AND ELECTRICAL PLUMBING CODE (IMC).  
 3. ALL WORK SHALL BE ACCORDING TO THE LATEST EDITION OF THE INTERNATIONAL MECHANICAL AND ELECTRICAL PLUMBING CODE (IMC).  
 4. ALL WORK SHALL BE ACCORDING TO THE LATEST EDITION OF THE INTERNATIONAL MECHANICAL AND ELECTRICAL PLUMBING CODE (IMC).  
 5. ALL WORK SHALL BE ACCORDING TO THE LATEST EDITION OF THE INTERNATIONAL MECHANICAL AND ELECTRICAL PLUMBING CODE (IMC).  
 6. ALL WORK SHALL BE ACCORDING TO THE LATEST EDITION OF THE INTERNATIONAL MECHANICAL AND ELECTRICAL PLUMBING CODE (IMC).  
 7. ALL WORK SHALL BE ACCORDING TO THE LATEST EDITION OF THE INTERNATIONAL MECHANICAL AND ELECTRICAL PLUMBING CODE (IMC).  
 8. ALL WORK SHALL BE ACCORDING TO THE LATEST EDITION OF THE INTERNATIONAL MECHANICAL AND ELECTRICAL PLUMBING CODE (IMC).  
 9. ALL WORK SHALL BE ACCORDING TO THE LATEST EDITION OF THE INTERNATIONAL MECHANICAL AND ELECTRICAL PLUMBING CODE (IMC).  
 10. ALL WORK SHALL BE ACCORDING TO THE LATEST EDITION OF THE INTERNATIONAL MECHANICAL AND ELECTRICAL PLUMBING CODE (IMC).

**NOTE:**  
 F.O.G. (FATS, OIL & GREASE) THAT IS COLLECTED IN THE GREASE TRAP SHALL BE DOUBLE BAGGED & DISPOSED OF IN A TRASH RECEPTACLE OR RECYCLED BY AN APPROVED AGENCY. OWNER IS RESPONSIBLE FOR ENSURING THAT ALL APPLICABLE EMPLOYEES ARE TRAINED IN CORRECT GREASE DISPOSAL PROCEDURE.

**GREASE TRAP CALCULATION**

1. FLOW RATE: 100 GPM  
 2. FLOW RATE: 100 GPM  
 3. FLOW RATE: 100 GPM  
 4. FLOW RATE: 100 GPM  
 5. FLOW RATE: 100 GPM

SIZE	1/2"	3/4"	1"	1 1/2"	2"
1. FLOW RATE	7	40	280	280	280
2. FLOW RATE	7	40	280	280	280
3. FLOW RATE	7	40	280	280	280
4. FLOW RATE	7	40	280	280	280
5. FLOW RATE	7	40	280	280	280
6. FLOW RATE	7	40	280	280	280
7. FLOW RATE	7	40	280	280	280
8. FLOW RATE	7	40	280	280	280
9. FLOW RATE	7	40	280	280	280
10. FLOW RATE	7	40	280	280	280



**SANITARY RISER**  
 NOT TO SCALE

PROGRESS OR CHECK SETS, BY THEIR NATURE, MAY BE INCOMPLETE AND ARE NOT TO BE USED FOR BIDDING OR CONSTRUCTION. CONTRACTOR RECOGNIZES HIS SOLE RESPONSIBILITY TO INCLUDE ALL CONTINGENCIES FOR THESE PLANS ARE NOT FINAL UNTIL PERMIT SETS ARE ISSUED. THE DESIGN OF THESE PLANS ARE NOT FINAL UNTIL PERMIT SETS ARE ISSUED.

PRIOR TO SUBMITTING THE BID, THE CONTRACTOR SHALL FIELD VERIFY ALL EXISTING CONDITIONS AND INFORM THE ARCHITECT AND THE ENGINEER OF ANY DISCREPANCY BETWEEN THESE DOCUMENTS AND THE EXISTING CONDITIONS AND SHALL INCLUDE IN THE BID TO CORRECT THE SAME AS DIRECTED. THE ENGINEER AND THE ARCHITECT, ARE NOT RESPONSIBLE FOR ANY ADDITIONAL COSTS RESULTING FROM VERIFYABLE EXISTING CONDITIONS DISCOVERED AFTER CONTRACT HAS BEEN AWARDED. THE CONTRACTOR SHALL BE RESPONSIBLE FOR OBTAINING ALL NECESSARY PERMITS AND THE ENGINEER OF RECORD. ALL CHANGES SHALL BE SUBMITTED FOR REVIEW PRIOR TO INSTALLATION. NOT FOR BID UNTIL PERMIT HAS BEEN ISSUED.

CHECK SET: 05/20/16

**Associated Professional Design**  
 Consulting Engineers  
 500 NE SPANISH RIVER BLVD, SUITE 205, BOCA RATON, FLORIDA 33431  
 PHONE: 561-419-8977; INFO@APD-ENGINEERING.COM  
 MARIAN WHITE, O.C.E., P.E. FLORIDA LICENSE NO. 593999

CA. LIC. No. 31328

**RWB Linares**  
 ARCHITECTURE  
 1600 SOUTH DIXIE HWY., SUITE 400  
 BOCA RATON, FLORIDA 33432  
 PHONE 561-391-0081 FAX 561-391-0085  
 EMAIL mail@rwb-arch.com

LIFE FELLOWSHIP  
 11401 WEST SAMPLE ROAD  
 CORAL SPRINGS, FL. 33065

PROJECT # 16024  
 DATE 05/20/16  
 SHEET #

P2.1

JUAN C. LINARES

AAS26000540