

REVISIONS

1	
2	
3	
4	
5	
6	
7	
8	
9	
10	

1. THIS DRAWING, SPECIFICATIONS, AND NOTES SHALL BE SUPPLEMENTED BY THE DRAWING'S GENERAL NOTES AND SPECIFICATIONS. 2. THE CONTRACTOR SHALL BE RESPONSIBLE FOR VERIFYING ALL EXISTING CONDITIONS AND THE EXISTING CONDITIONS AND SHALL INCLUDE IN THE BID TO CORRECT THE SAME AS DIRECTED. 3. THE ENGINEER AND THE ARCHITECT ARE NOT RESPONSIBLE FOR ANY ADDITIONAL COSTS RESULTING FROM VERIFIABLE EXISTING CONDITIONS DISCOVERED AFTER CONTRACT HAS BEEN AWARDED. 4. RECORD: ALL CHANGES SHALL BE SUBMITTED FOR REVIEW PRIOR TO INSTALLATION. 5. NOT FOR BID UNTIL PERMIT HAS BEEN ISSUED.

NOTE: SHOCK ARRESTOR SHALL BE INSTALLED AT EACH END OF EACH WATER RISER. SHOCK ARRESTOR SHALL BE INSTALLED TO A MINIMUM RISE ABOVE EXISTING FINISH FLOOR TO MAINTAIN CLEARANCE TO MAINTENANCE PERSONNEL.

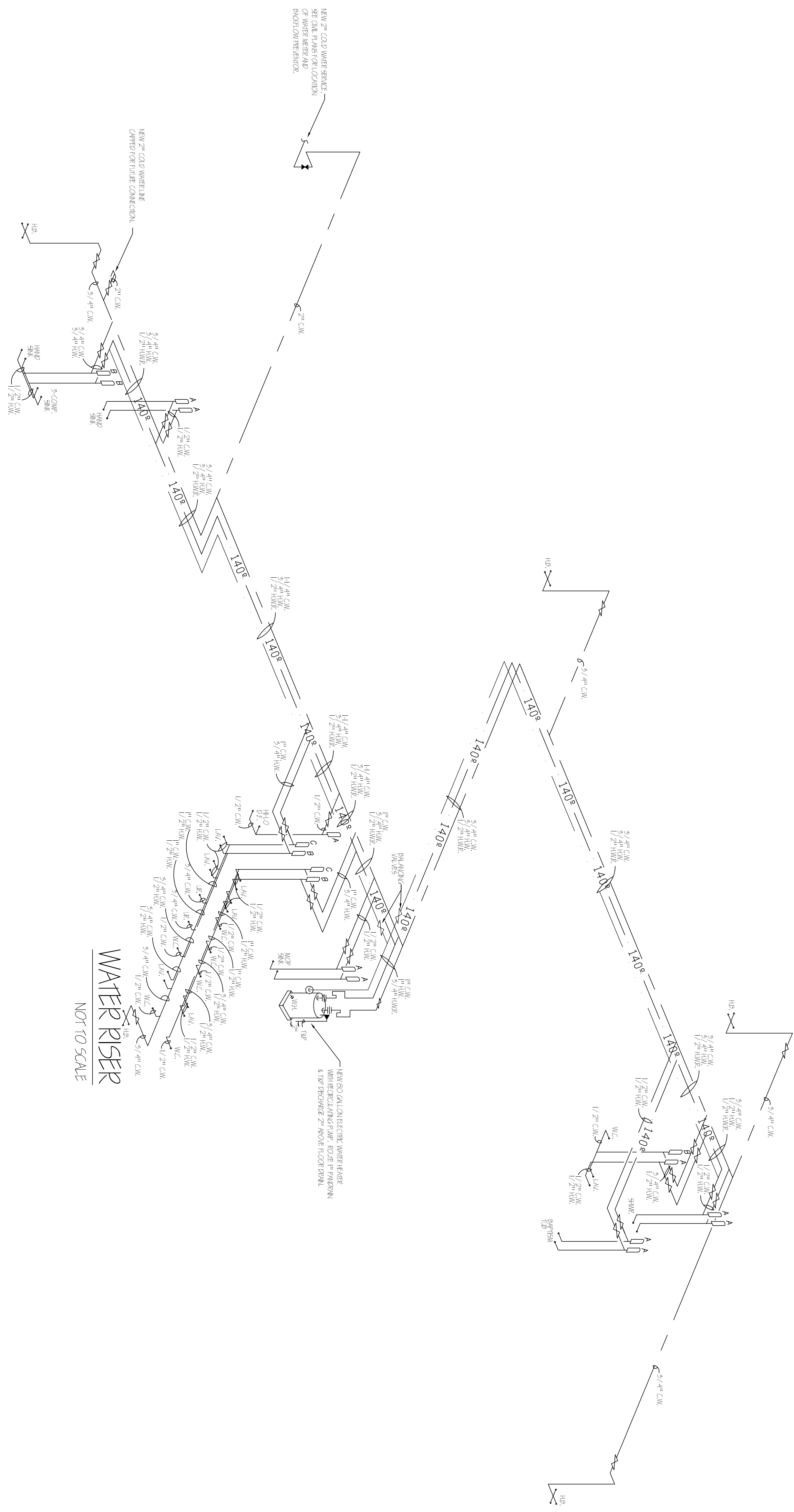
SHOCK ARRESTOR SCHEDULE

ELEVATION	MAKE & MODEL	FINISH ANCH	CONNECTION
A	SHOCK ARREST 6052-A	18	1/2"
B	SHOCK ARREST 6052-B	12-92	5/8"
C	SHOCK ARREST 6044-C	54-60	1"

SIZE & SCHEDULE REQUIREMENTS FOR 2" DIA. 20# STEEL PIPING

PIPE TYPE	NO.	CM/LIN.FT.	WWT/LIN.FT.	PER INCH	MATERIAL
2" DIA.	7	50.0	-	50.0	55.0
1 1/2" DIA.	2	19.0	-	20.0	6.0
1" DIA.	1	22.0	-	20.0	2.0
3/4" DIA.	2	15.0	-	20.0	4.0
1/2" DIA.	1	15.0	-	20.0	0.5
FLANGE CONNECTION	5	50.0	-	50.0	50.0
TOTAL	86	-	-	-	66.5

2" DIA. CM/LIN.FT. = 65.5
1 1/2" DIA. CM/LIN.FT. = 22.0
1" DIA. CM/LIN.FT. = 22.0
3/4" DIA. CM/LIN.FT. = 15.0
1/2" DIA. CM/LIN.FT. = 15.0



PROGRESS OR CHECK SETS, BY THEIR NATURE, MAY BE INCOMPLETE AND ARE NOT TO BE USED FOR BIDDING OR CONSTRUCTION. CONTRACTOR RECOGNIZES HIS SOLE RESPONSIBILITY TO INCLUDE ALL CONTINGENCIES FOR THESE PLANS ARE NOT FINAL UNTIL PERMIT SETS ARE ISSUED.

PRIOR TO SUBMITTING THE BID, THE CONTRACTOR SHALL FIELD VERIFY ALL EXISTING CONDITIONS AND INFORM THE ARCHITECT AND THE ENGINEER OF ANY DISCREPANCY BETWEEN THESE DOCUMENTS AND THE EXISTING CONDITIONS AND SHALL INCLUDE IN THE BID TO CORRECT THE SAME AS DIRECTED. THE ENGINEER AND THE ARCHITECT ARE NOT RESPONSIBLE FOR ANY ADDITIONAL COSTS RESULTING FROM VERIFIABLE EXISTING CONDITIONS DISCOVERED AFTER CONTRACT HAS BEEN AWARDED.

RECORD: ALL CHANGES SHALL BE SUBMITTED FOR REVIEW PRIOR TO INSTALLATION.

NOT FOR BID UNTIL PERMIT HAS BEEN ISSUED.

CA. LIC. NO. 31328

Associated Professional Design
Consulting Engineers

5900 NE SPANISH WATERS BLVD., SUITE 205, BOCA RATON, FLORIDA 33431
PHONE: 561-449-8977, INFO@APD-ENGINEERING.COM
MARTIN WHITE, O.C.E., P.E., FLORIDA LICENSE NO. 59399

CHECK SET: 05/20/16

PROJECT # 10824
DATE 05/20/16
SHEET #

RWB Linares
ARCHITECTURE

1600 SOUTH DIXIE HWY., SUITE 400
BOCA RATON, FLORIDA 33432
PHONE 561-391-0081 FAX 561-391-0085
EMAIL mail@rwb-arch.com

LIFE FELLOWSHIP
11401 WEST SAMPLE ROAD
CORAL SPRINGS, FL. 33065

P2.1

JUAN C. LINARES

AAS28000540