

DOWNLIGHT PENDANT-SMALL

18" LED LUMINAIRE

U.3.10.16

Description

Performance and directional control make this luminaire highly versatile and able to accommodate needs in the strictest environments. Multiple size and shade configurations make this luminaire suitable for a wide variety of decorative applications, especially where a Dark Sky friendly instrument is desirable.

The decorative housing is vented at top and bottom to allow natural air convection cooling of IP66 sealed optical modules, while protecting heat-sink fins from debris collection. The driver is accessible through the bottom. Greater than 88% optical efficiency, highly uniform with reduced hot-spot and greater fixture center spacing. This luminaire uses less than 60% of the energy yet achieves greater fixture spacing, improved uniformity vs. Metal Halide.

Construction:

- Cast aluminum housing
- Spun aluminum shade

Optical Chamber:

Individual IP66 sealed optical modules

Optics:

- High Performance individual optical refractive lens for each LED module.
- Cool, neutral, or warm color temperatures
- IESNA Full Cutoff
- Available in Type 2, 3, 4, or 5 light patterns

Driver:

Convection cooled driver with electronic constant current operation with over voltage and short circuit protection. Automatic voltage sensing for 120 to 277v input. Dimmable with ELV available at 120v only.

Installation

The luminaire will mount to the bracket. Post top luminaire brackets will mount to a 3" OD post or tenon with (6) 5/16" stainless steel set screws. Wall bracket models have four 3/8" holes for mounting (wall mount hardware is not included).

FINISH

Premium quality thermoset polyester powdercoat for a durable finish in the following:

BLK - Satin Black

CLB - Classic Bronze

GBZ - Gloss Textured Bronze

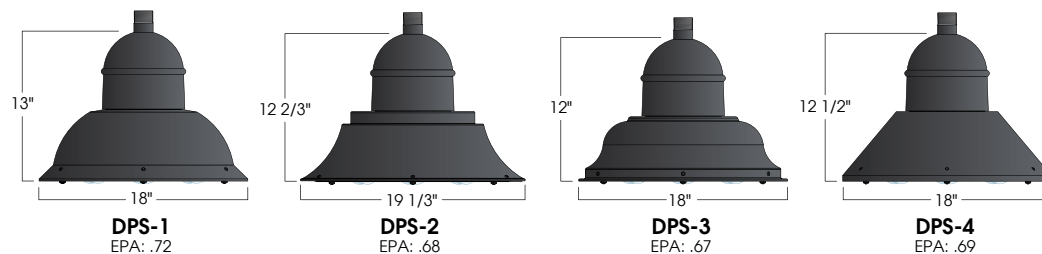
GRN - Green

GTB - Gloss Textured Black

TBK - Textured Black

TGR - Gloss Textured Green

Available Shade Styles



Ordering Information:

Model	Light Distribution Type	Order Code	CCT	CRI	Approx. Lumens Delivered	Nominal Input Power	Finish	Dimming Option
DPS-1	T2 T3 T5	3VL	3000K	80	4,000	58W	BLK, CLB GBZ, GRN GTB, TBK TGR Custom	DM 0-10volt
DPS-2		4VL	4000K	80	4,200			
DPS-3		5VL	5000K	65	4,400			
DPS-4		3L	3000K	80	5,600	82W		
		4L	4000K	80	5,800			
		5L	5000K	65	6,000			

DPS Series
LED



PROJECT:

TYPE:



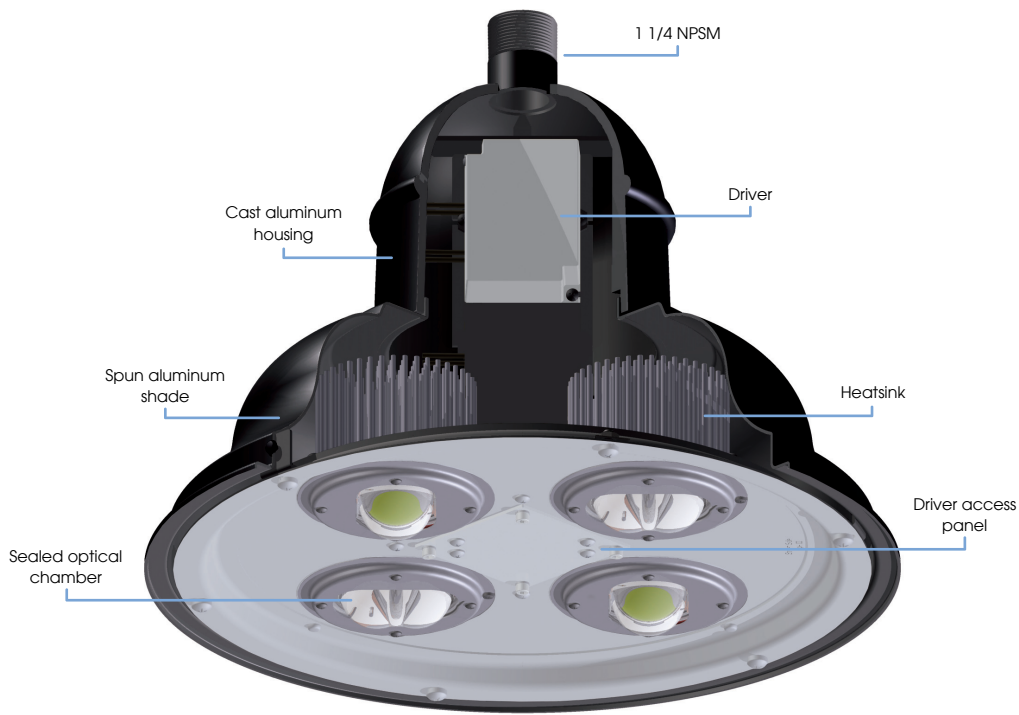
Electrostatic sensitive device.
observe precautions for handling

5 year limited
warranty
AMERLUX LED

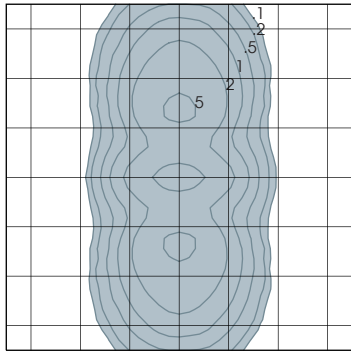


Part String

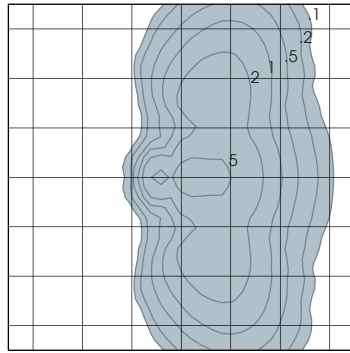
Example: DPS-1/T2/3VL/BLK



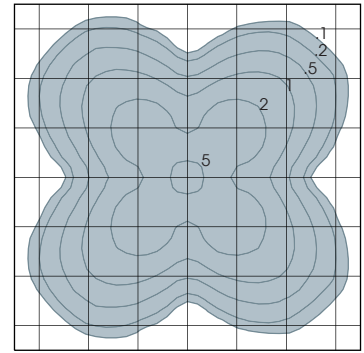
Typical Photometry



DPS-X/T2/3H
 Scale: 1 Unit = 12 Ft.
 Mounting Height = 12.00 Ft



DPS-X/T3/3H
 Scale: 1 Unit = 12 Ft.
 Mounting Height = 12.00 Ft



DPS-X/T5/3H
 Scale: 1 Unit = 12 Ft.
 Mounting Height = 12.00 Ft

Mounting Options

