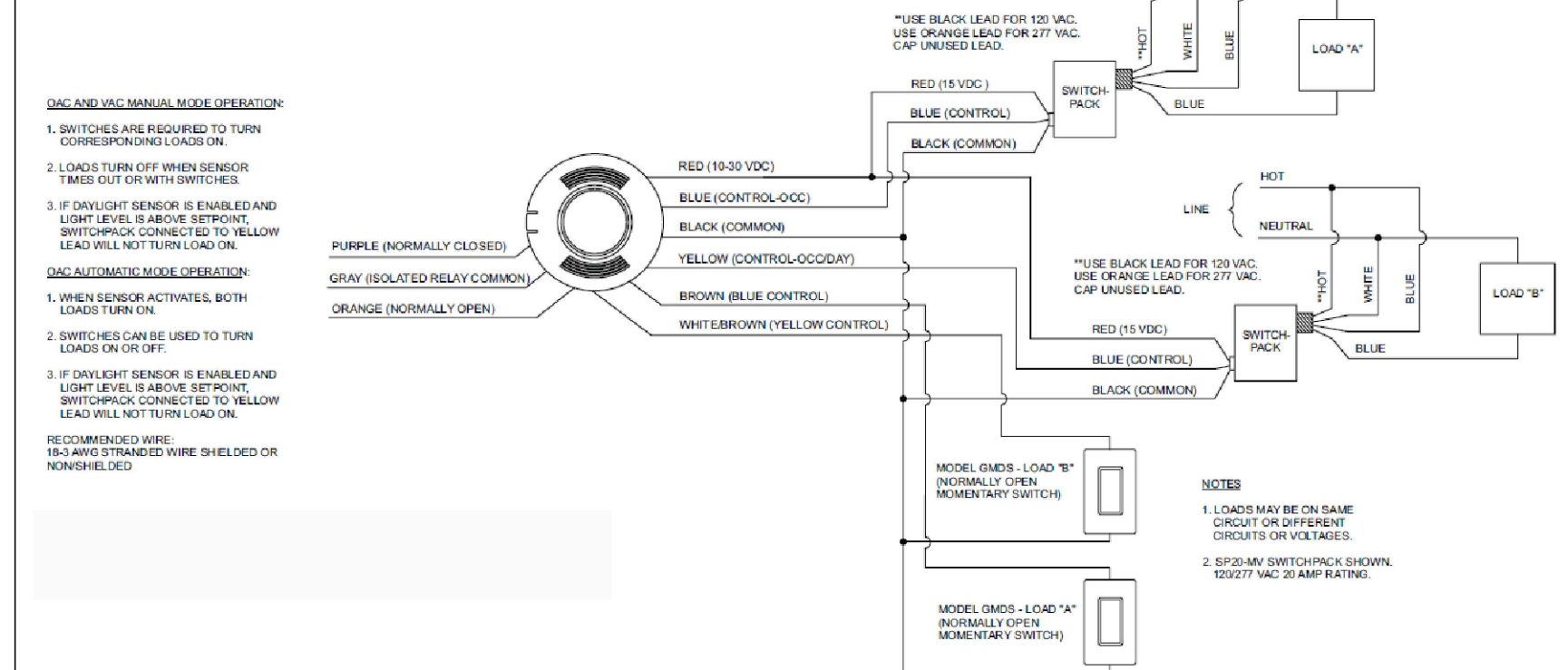


SYMBOL	DESCRIPTION	SYMBOL	DESCRIPTION
□	2'x4' FLUORESCENT LIGHT FIXTURE 120V, 60Hz, 2x F32T8 LAMPS, MAX. 58W INPUT TO BE SELECTED BY ARCHITECT / OWNER	Ⓐ	2 POLE SWITCH, 30A, HP RATED
□	2'x2' FLUORESCENT LIGHT FIXTURE 120V, 60Hz, 2x F17T8 LAMPS, MAX. 32W INPUT TO BE SELECTED BY ARCHITECT / OWNER	Ⓓ	DIMMER SWITCH (+48" A.F.F., TO TOP. U.N.D.)
○	LED RECESSED DOWNLIGHT 120V, 60Hz, MAX. 21W INPUT TO BE SELECTED BY ARCHITECT / OWNER	Ⓔ	LV MOMENTARY PUSH BUTTON (+48" A.F.F., TO TOP. U.N.D.)
□	EXTERIOR LIGHT FIXTURE - WALL PACK 120V, 60Hz, MAX. 42W INPUT, LED OR CF TO BE SELECTED BY ARCHITECT / OWNER	Ⓝ(3)	PIR OCCUPANCY/VACANCY SENSOR WALL SWITCH EATON, MDL# OSW-P-120/277V OR APPROVED EQUAL (+48" A.F.F., TO TOP. U.N.D.) "3" INDICATES 3-WAY SWITCH
□	WALL SCOONCE LIGHT FIXTURE 120V, 60Hz, MAX. 60W TO BE SELECTED BY ARCHITECT / OWNER	Ⓝ(3)	DIGITAL PROGRAMABLE TIME SWITCH WALL MOUNTED INTERMATIC, MDL# STD1, 120/277V OR APPROVED EQUAL "3" INDICATES 3-WAY SWITCH (+48" A.F.F., TO TOP. U.N.D.)
○	PENDANT LIGHT FIXTURE 120V, 60Hz, MAX. 60W LED LAMP TO BE SELECTED BY ARCHITECT / OWNER	(OST)	ULTRASONIC CEILING MOUNT LV VACUUM SENSOR EATON VAC-U-1000-R *OR APPROVED EQUAL* 1000 SQ.FT COVERAGE, 360DEG. FIELD
⊗	EXIT SIGN WITH BATTERY BACK UP FOR 90 MIN. HATCH AREA INDICATES FACE OF SIGN. ARROW INDICATES EXIT DIRECTION. DUAL LITE LX-U-E COLOR / TRIM BY ARCHITECT/OWNER	SP	SWITCH PACK EATON SP20-MV 20A RATED RELAY WITH 15V OUTPUT TO VACANCY SENSORS *OR APPROVED EQUAL*
⊗	TANDEM EXIT SIGN / EMERGENCY LIGHT WITH BATTERY BACK UP FOR 90 MIN. DUAL LITE LIT-U-03L, 3W LED LAMP, COLOR / TRIM BY ARCHITECT/OWNER	Ⓣ/L	EXHAUST FAN (SEE MECHANICAL PLANS FOR SPECS)
⊗	EMERGENCY LIGHT WITH BATTERY BACK UP FOR 90 MIN. DUAL LITE L2Z-03L, 3W LED LAMP	<b>NOTES</b>	
\$	LIGHT SWITCH (+48" A.F.F., TO TOP. U.N.D.)	1. NOT ALL SYMBOLS MAY APPEAR ON PLANS.	
\$	3 WAY LIGHT SWITCH (+48" A.F.F., TO TOP. U.N.D.)	2. IF THERE IS NO DESIGNATION NEXT TO FIXTURE, THEN ASSUME IT IS A NEW FIXTURE. IF NOT EXISTING, LOCATE IT AS SHOWN ON PLANS.	
\$	1 POLE SWITCH, 20A, HP RATED	3. PROVIDE A DISCONNECTING MEANS FOR ALL DOUBLE ENDED FLUORESCENT LAMPS WITH BALLAST AS PER NEC410.72(G).	
\$	2 POLE SWITCH, 30A, HP RATED	<b>DESIGNATION / DESCRIPTION</b>	
+		+84"	UNLESS NOTED DIFFERENTLY, UNLESS NOTED DIFFERENTLY, FINISHED FLOOR NIGHT LIGHT, UNSWITCHED 24HRS ON
AFCI	ARC FAULT CIRCUIT INTERRUPT	UND	NIGHT LIGHT, UNSWITCHED 24HRS ON
GFI	GROUND FAULT CIRCUIT INTERRUPT	NL	NEUTRAL
T/S	TIME SWITCH	PC	PHOTO CELL
WP	WEATHER PROOF ENCLOSURE	LC	LIGHTING CONTACTOR
IG	ISOLATED GROUND	MWC	MINIMUM WORK CLEARANCE
N	NEW FIXTURE	OCP	OVER CURRENT PROTECTION
R	RELOCATED FIXTURE	OC	ON CENTER
E	INDICATES AN EXISTING FIXTURE TO REMAIN	SW	SHOW WINDOW RECEPTACLE
T/L	TRIP LOCK		

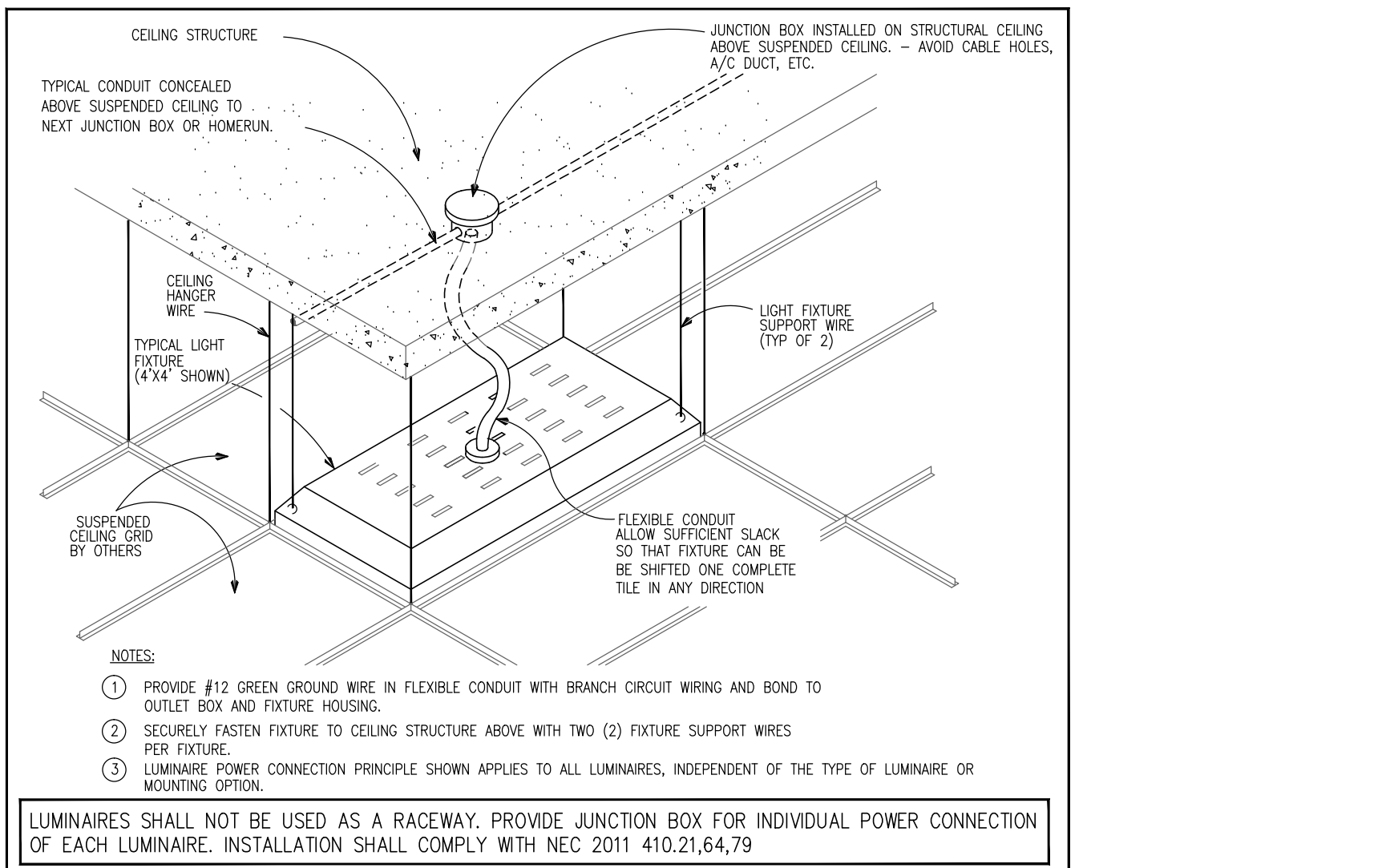
### Wiring Diagrams

#### VAC-U-2000-R Model

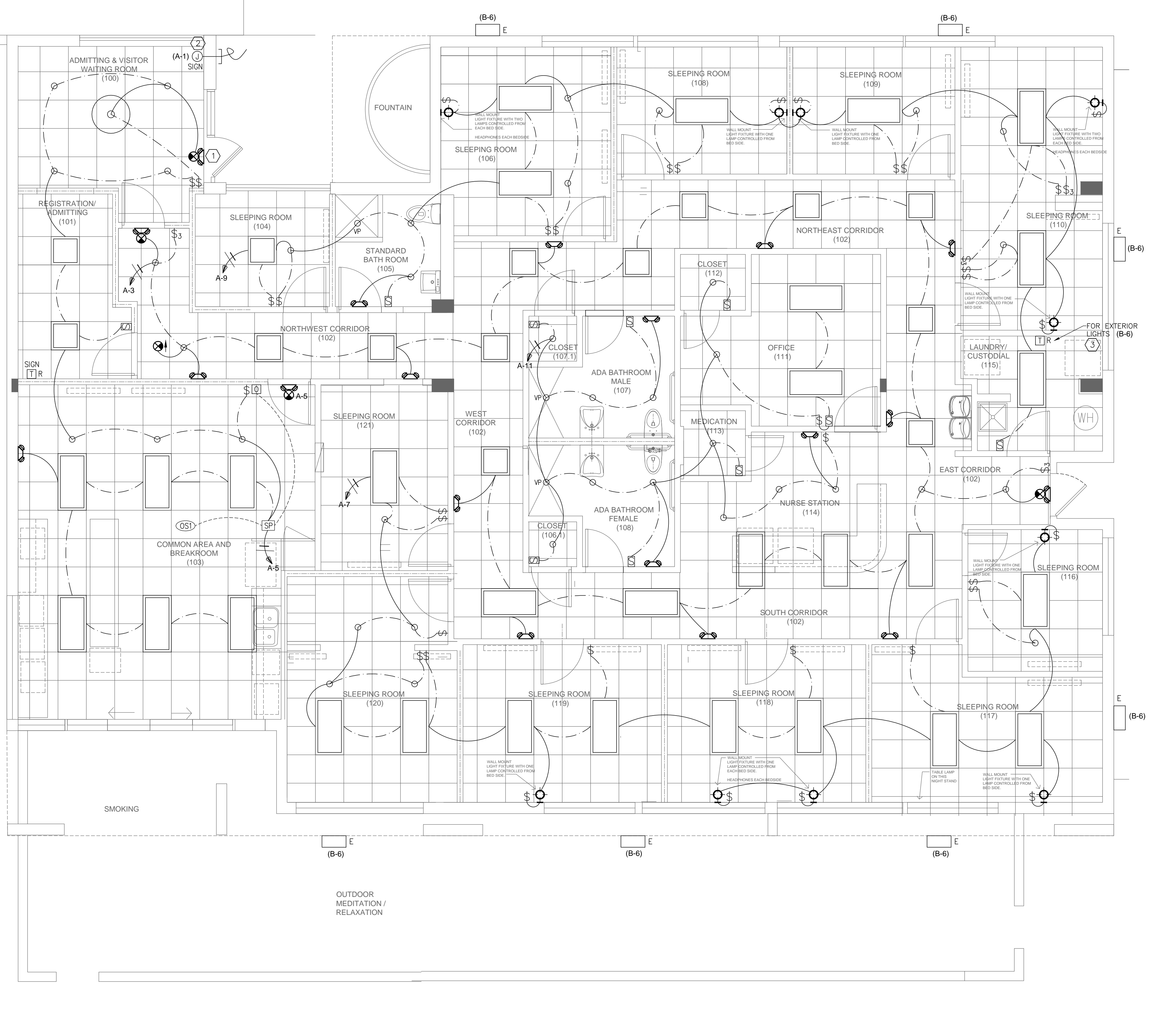


### OCCUPANCY SENSOR / SWITCH PACK WIRING DIAGRAM

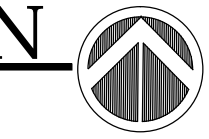
**NOTES:**  
- THE OCCUPANT SENSOR MUST HAVE AN UNOBSTRUCTED VIEW OF THE ROOM.  
- DO NOT MOUNT NEAR TALL CABINETS, SHELVES, INDIRECT HANGING FIXTURES, ETC.  
- KEEP THE OCCUPANT SENSOR MIN. 6FT AWAY FROM AIR FLOW VENTILATION OUTLETS, WINDOWS, OTHER REFLECTIVE SURFACES, FANS.  
- FIELD COORDINATE EXACT LOCATION PRIOR TO ROUGH IN.  
- CLOSELY FOLLOW THE COVERAGE DIAGRAMS AND INSTALLATION GUIDELINES FROM MANUFACTURER.



		N.T.S.		I	
<b>LIGHTING LEVELS PER FBC 2014 Energy Conservation Chapter 4</b>					
<b>BUILDING AREA METHOD - C405.5.2(2)</b>					
BUILDING AREA TYPE	AREA [sq.ft.]	MAX. LPD [VA/sq.ft.]	MAX LP [VA]	LP PROVIDED [VA]	LPD PROVIDED [VA/sq.ft.]
DORMITORY	3900	1.0	3900	3700	0.9
<b>LP - LIGHTING POWER</b>					
<b>LPD - LIGHTING POWER DENSITY</b>					
LP BASED ON NON-SIMULTANEOUS USER OPERATION, HIGHEST WATTAGE					



LIGHTING PLAN  
scale: 1/4" = 1'-0"



**KEY NOTES:** #

1. CONNECT ALL EXIT SIGNS AND EMERGENCY LIGHTS TO LOCAL LIGHT CIRCUIT AHEAD OF ANY SWITCHES OR RELAYS. PROVIDE UNSWITCHED HOT.
2. FIELD VERIFY AND CONFIRM EXACT LOCATION OF SIGN OUTLET WITH ARCHITECT / OWNER PRIOR TO BID / ROUGH IN. PROVIDE CONDUIT STUB OUT W/ PULL STRING IF RELOCATED. RELOCATE EXISTING SIGN TIME SWITCH IN REGISTRATION ROOM AND RECONNECT TO EXISTING SIGN CIRCUIT AS PREVIOUS.
3. RELOCATE EXISTING TIME SWITCH FOR EXTERIOR LIGHTING CURRENTLY LOCATED IN LAUNDRY TO ACCOMMODATE NEW LAUNDRY LAYOUT AND RECONNECT TO EXISTING CIRCUIT B-6 AS PREVIOUS.

**AMERICAN UNITED Engineers Inc.**  
Dedicated to Excellence

**AUE**  
CA # 29803

450B SW 24th Street  
Fort Lauderdale, FL 33317  
Tel: (954) 471-8657  
american.eng@comcast.net

PROJECT NO. 1835.00

**CCS**  
ARCHITECTURAL ENTERPRISES, INC.  
499 East Palmetto Park Rd.  
Suite 204  
Boca Raton, FL 33432  
T 561.479.9884  
www.ccsarch.com  
Florida Registration Number AA26001852

**CONSULTANTS:**

**ELECTRICAL, MECHANICAL, PLUMBING:**

AMERICAN UNITED ENGINEERS  
450B SW 24TH STREET  
FORT LAUDERDALE, FL 33317  
PHONE: (954) 471-8657

**PROJECT:**

INTERIOR IMPROVEMENTS  
950 NW 9th Court  
Boca Raton, FL

**DESIGN DEVELOPMENT**

PROJECT NUMBER: 2016.06  
DATE: 06-29-2016  
CAD FILE NO:

**ADDENDA/REVISIONS**


**SEAL:**

CYNTHIA C. SPRAY, AIA AR-94167

DRAWING TITLE:  
**LIGHTING PLAN**

DRAWING NO: **E-2**