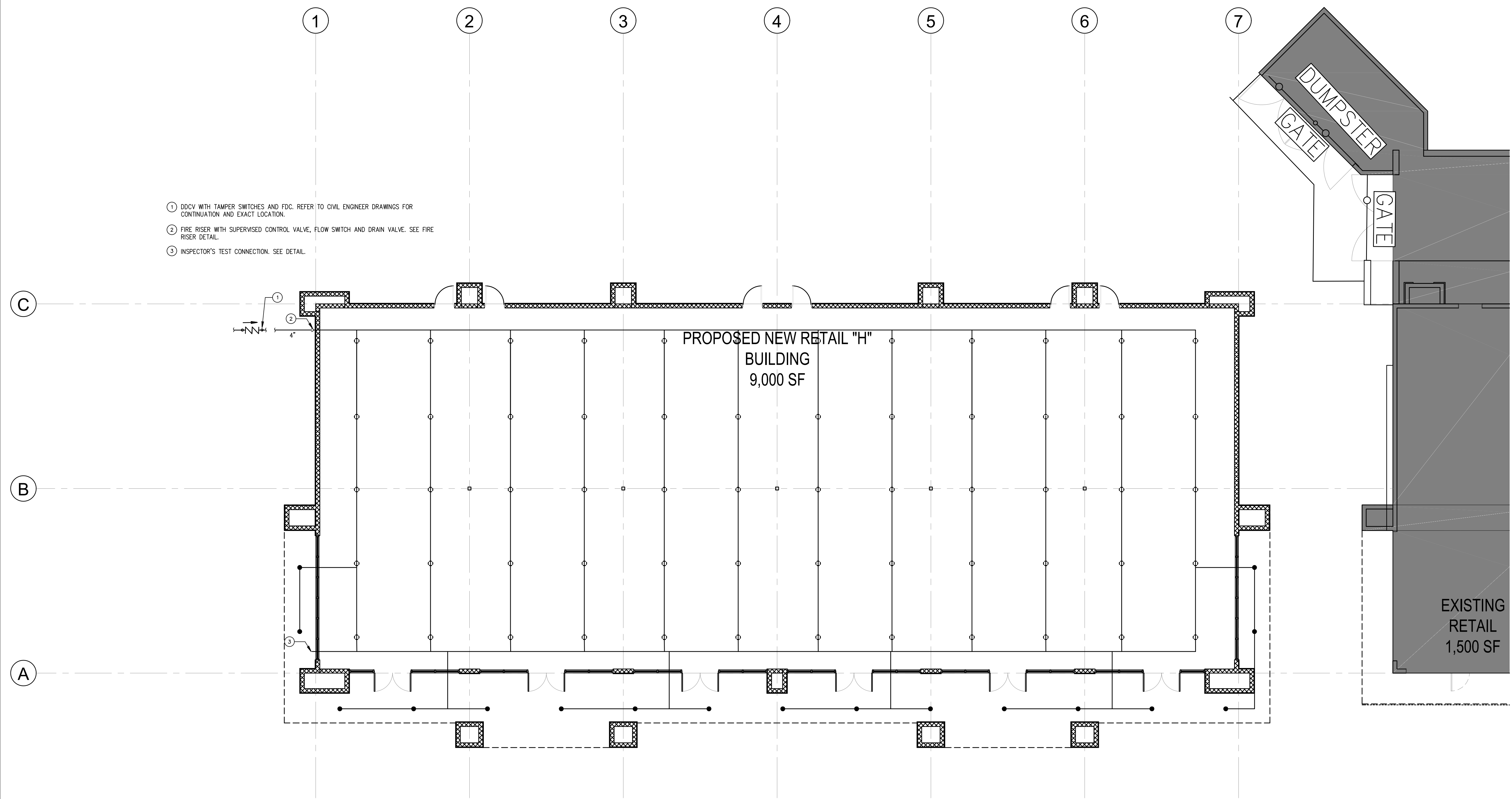


THIS DOCUMENT CONTAINS COPYRIGHTED MATERIAL AND IS MADE SECRETE INFORMATION BELONGING EXCLUSIVELY TO WILLIAMSON DACAR ASSOCIATES, INC. ANY UNAUTHORIZED USE, REPRODUCTION, DISSEMINATION OR DISTRIBUTION OF ANY PART OF THE INFORMATION CONTAINED HEREIN MAY RESULT IN CIVIL AND/OR CRIMINAL PENALTIES UNDER APPLICABLE LAWS.

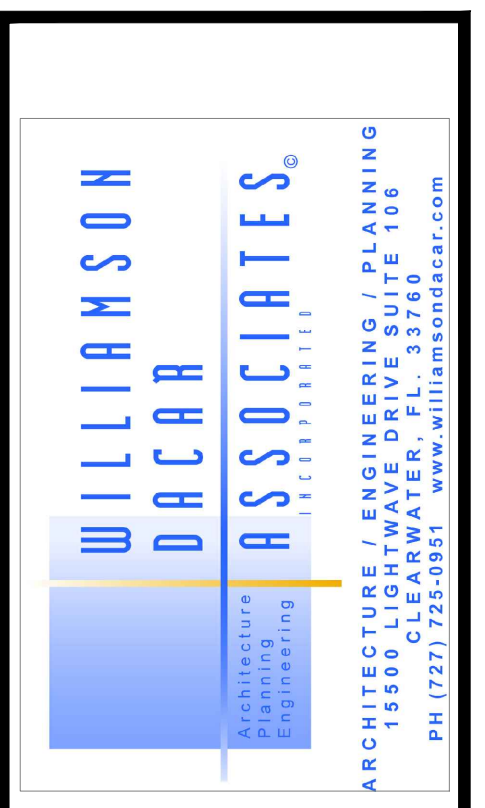


- ① DDCV WITH TAMPER SWITCHES AND FDC. REFER TO CIVIL ENGINEER DRAWINGS FOR CONTINUATION AND EXACT LOCATION.
- ② FIRE RISER WITH SUPERVISED CONTROL VALVE, FLOW SWITCH AND DRAIN VALVE. SEE FIRE RISER DETAIL.
- ③ INSPECTOR'S TEST CONNECTION. SEE DETAIL.

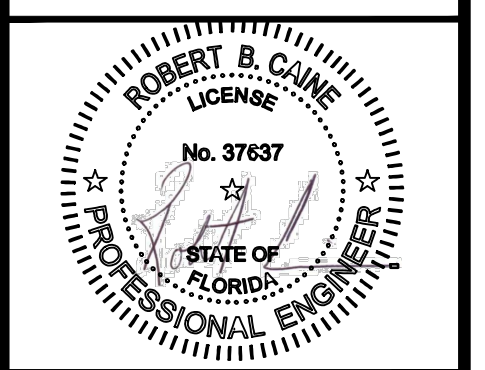
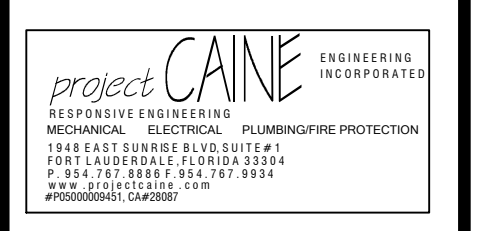
PROPOSED NEW RETAIL "H"
BUILDING
9,000 SF

EXISTING
RETAIL
1,500 SF

FIRE PROTECTION SITE FLOOR PLAN
SCALE: 1/8" = 1'-0"



Architect: AA 0002541
Engineering: EB 0006884



WELLINGTON GREEN PARCEL "F"
PHASE II RETAIL "H" MODIFICATION
2546 SOUTH STATE ROAD 7
WELLINGTON, FLORIDA 33414

Revisions of Drawings		
No.	Date	Revisions

Issues of Drawings		
No.	Date	Issues
1	06.15.16	100% CD - PERMIT SET

Phase:
Checked:
Drawn: BDL
Drawing Title

FIRE PROTECTION FLOOR PLAN

WDA Proj. No.: 1526-01
Owner Proj. No.:
Scale: AS NOTED

Sheet No.
FP-2.1
No. of Sheets: