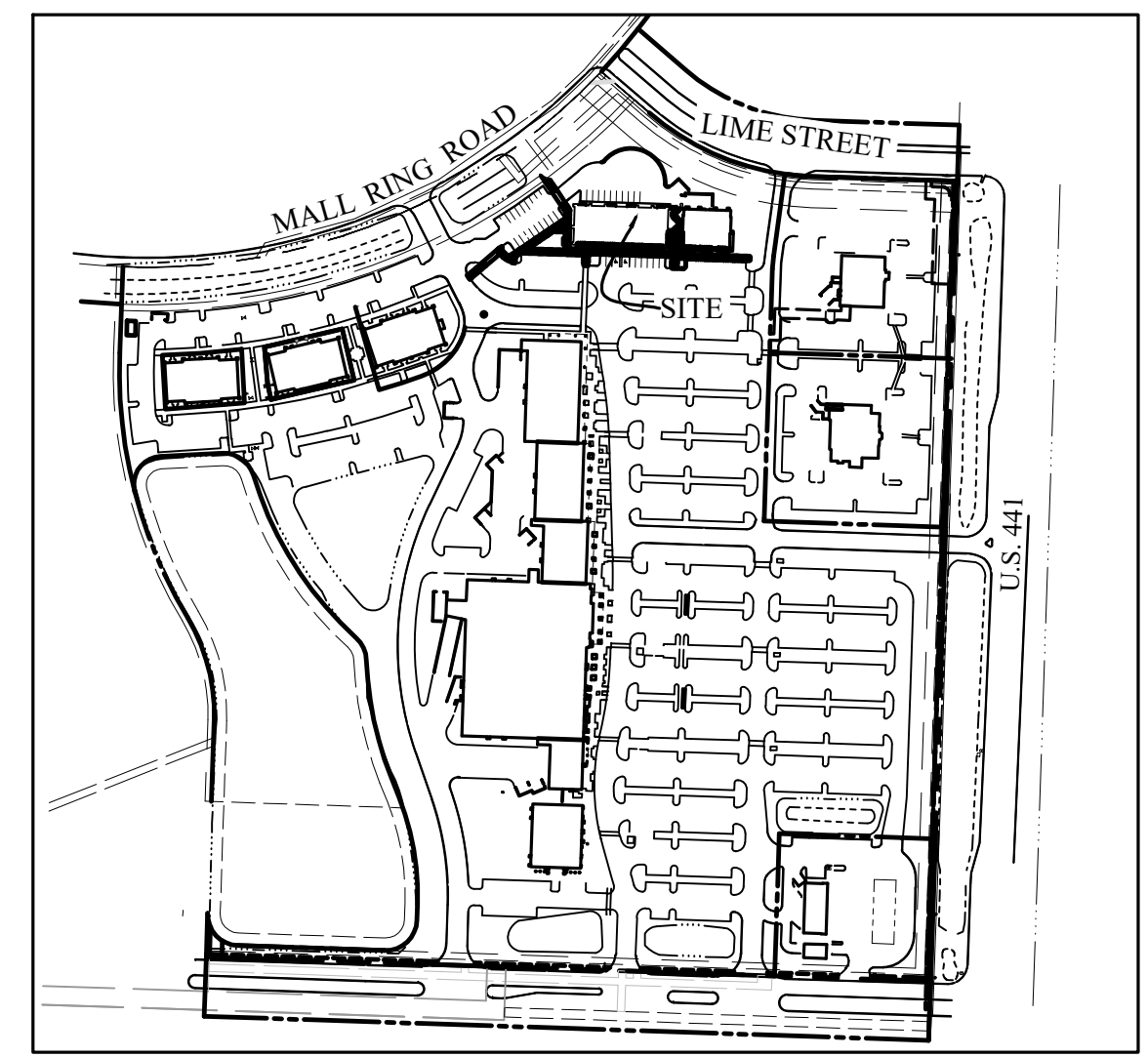


# EXISTING VEGETATION INVENTORY

NO.	BOTANICAL NAME	COMMON NAME	SIZE	ACTION
22	PHOENIX DACTYLIFERA 'MEDJOO'	'MEDJOO' DATE PALM	10' CW	PRESERVE
23	QUERCUS VIRGINIANA	OAK	10" CAL., 22' HT.	PRESERVE
24	QUERCUS VIRGINIANA	OAK	10" CAL., 25' HT.	PRESERVE
25	QUERCUS VIRGINIANA	OAK	8" CAL., 20' HT.	PRESERVE
26	QUERCUS VIRGINIANA	OAK	8" CAL., 18' HT.	PRESERVE
27	QUERCUS VIRGINIANA	OAK	6" CAL., 20' HT.	PRESERVE
28	ROYSTONEA ELATA	FLORIDA ROYAL PALM	12' OA	RELOCATE ON SITE
29	QUERCUS VIRGINIANA	OAK	10" CAL., 24' HT.	RELOCATE ON SITE
30	SABAL PALMETTO	CABBAGE PALM		RELOCATE ON SITE
31	SABAL PALMETTO	CABBAGE PALM		RELOCATE ON SITE
32	SABAL PALMETTO	CABBAGE PALM		RELOCATE ON SITE
33	SABAL PALMETTO	CABBAGE PALM		RELOCATE ON SITE
34	SABAL PALMETTO	CABBAGE PALM		RELOCATE ON SITE
35	QUERCUS VIRGINIANA	OAK		PRESERVE
36	MYRCIANTHES FRAGRANS	SIMPSON'S STOPPER		PRESERVE
37	DELONIX REGIA	ROYAL POINCIANA	20' HT.	PRESERVE
38	DELONIX REGIA	ROYAL POINCIANA	20' HT.	PRESERVE
39	QUERCUS VIRGINIANA	OAK		PRESERVE
40	SABAL PALMETTO	CABBAGE PALM		PRESERVE
41	QUERCUS VIRGINIANA	OAK		PRESERVE
42	SABAL PALMETTO	CABBAGE PALM		PRESERVE
43	SABAL PALMETTO	CABBAGE PALM		PRESERVE
44	QUERCUS VIRGINIANA	OAK		PRESERVE
45	QUERCUS VIRGINIANA	OAK		PRESERVE
46	QUERCUS VIRGINIANA	OAK		PRESERVE
47	QUERCUS VIRGINIANA	OAK		PRESERVE
48	QUERCUS VIRGINIANA	OAK		PRESERVE
49	QUERCUS VIRGINIANA	OAK		PRESERVE
50	SABAL PALMETTO	CABBAGE PALM		PRESERVE
51	QUERCUS VIRGINIANA	OAK		PRESERVE
52	TAXODIUM DISTICHUM	BALD CYPRESS	25' HT.	PRESERVE
53	TAXODIUM DISTICHUM	BALD CYPRESS	25' HT.	PRESERVE
54	PHOENIX DACTYLIFERA 'MEDJOO'	'MEDJOO' DATE PALM	20' CW	PRESERVE
55	ROYSTONEA ELATA	FLORIDA ROYAL PALM	20' GW	PRESERVE
56	ROYSTONEA ELATA	FLORIDA ROYAL PALM	20' GW	PRESERVE
57	ROYSTONEA ELATA	FLORIDA ROYAL PALM	20' GW	PRESERVE
58	QUERCUS VIRGINIANA	OAK		PRESERVE
59	ROYSTONEA ELATA	FLORIDA ROYAL PALM	20' GW	PRESERVE
60	QUERCUS VIRGINIANA	OAK		PRESERVE
79	QUERCUS VIRGINIANA	OAK		PRESERVE
80	QUERCUS VIRGINIANA	OAK	14' HT. X 10' SPR., 5-6" CAL	RELOCATE ON SITE
81	QUERCUS VIRGINIANA	OAK	14' HT. X 10' SPR., 5-6" CAL	RELOCATE ON SITE
82	QUERCUS VIRGINIANA	OAK	14' HT. X 10' SPR., 5-6" CAL	RELOCATE ON SITE
83	QUERCUS VIRGINIANA	OAK	14' HT. X 10' SPR., 5-6" CAL	RELOCATE ON SITE
84	QUERCUS VIRGINIANA	OAK	14' HT. X 10' SPR., 5-6" CAL	RELOCATE ON SITE
85	QUERCUS VIRGINIANA	OAK	14' HT. X 10' SPR., 5-6" CAL	RELOCATE ON SITE
86	QUERCUS VIRGINIANA	OAK	14' HT. X 10' SPR., 5-6" CAL	RELOCATE ON SITE
87	QUERCUS VIRGINIANA	OAK	14' HT. X 10' SPR., 5-6" CAL	RELOCATE ON SITE
88	QUERCUS VIRGINIANA	OAK	14' HT. X 10' SPR., 5-6" CAL	RELOCATE ON SITE
89	QUERCUS VIRGINIANA	OAK	14' HT. X 10' SPR., 5-6" CAL	RELOCATE ON SITE
90	LAGERSTROEMIA INDICA	CRAPE MYRTLE	10' HT.	RELOCATE ON SITE
91	ILEX CASSINE	DAHOON HOLLY		TO BE REMOVED
92	QUERCUS VIRGINIANA	OAK	14' HT. X 10' SPR., 5-6" CAL	RELOCATE ON SITE
93	SABAL PALMETTO	CABBAGE PALM	10-15' BT	RELOCATE ON SITE
94	SABAL PALMETTO	CABBAGE PALM	10-15' BT	PRESERVE
95	SABAL PALMETTO	CABBAGE PALM	10-15' BT	PRESERVE
96	QUERCUS VIRGINIANA	OAK		PRESERVE
97	SABAL PALMETTO	CABBAGE PALM		PRESERVE
98	SABAL PALMETTO	CABBAGE PALM		PRESERVE
99	SABAL PALMETTO	CABBAGE PALM		PRESERVE
100	QUERCUS VIRGINIANA	OAK		PRESERVE
101	QUERCUS VIRGINIANA	OAK		PRESERVE
102	QUERCUS VIRGINIANA	OAK		PRESERVE

NO.	BOTANICAL NAME	COMMON NAME	SIZE	ACTION
103	ILEX CASSINE	DAHOON HOLLY		TO BE REMOVED
104	ILEX CASSINE	DAHOON HOLLY		TO BE REMOVED
105	WODYETIA BIFURCATA	FOXTAIL PALM	10' GW	PRESERVE
106	WODYETIA BIFURCATA	FOXTAIL PALM	10' GW	PRESERVE
107	LIGUSTRUM LUCIDUM	LIGUSTRUM TREE		PRESERVE
108	DYPISIS LUTESCENS	ARECA PALM		PRESERVE
109	SYAGRUS ROMANZOFFIANA	QUEEN PALM	10' GW	PRESERVE
110	SYAGRUS ROMANZOFFIANA	QUEEN PALM	10' GW	PRESERVE
111	SYAGRUS ROMANZOFFIANA	QUEEN PALM	10' GW	PRESERVE
112	DELONIX REGIA	ROYAL POINCIANA		PRESERVE
113	DELONIX REGIA	ROYAL POINCIANA		PRESERVE
114	QUERCUS VIRGINIANA	OAK		PRESERVE
115	QUERCUS VIRGINIANA	OAK		PRESERVE
116	QUERCUS VIRGINIANA	OAK		PRESERVE
117	QUERCUS VIRGINIANA	OAK		PRESERVE
118	QUERCUS VIRGINIANA	OAK		PRESERVE
119	CHRYSOBALANUS ICACO 'RED TIP'	RED TIP COCOPLUM		PRESERVE
120	TRIPSACUM DACTYLOIDES	FAKAHATCHEE GRASS		PRESERVE
121	PHILODENDRON SELLOUM	SPLIT LEAF PHILODENDRON		PRESERVE
122	MYRCIANTHES FRAGRANS	SIMPSON'S STOPPER		PRESERVE
123	TRIPSACUM DACTYLOIDES	FAKAHATCHEE GRASS		PRESERVE
124	CHRYSOBALANUS ICACO 'RED TIP'	RED TIP COCOPLUM		PRESERVE
125	TRIPSACUM DACTYLOIDES	FAKAHATCHEE GRASS		PRESERVE
126	ZAMIA MARITIMA	CARDBOARD PALM		PRESERVE
127	JASMINUM VOLUBILE	WAX JASMINE		PRESERVE
128	ILEX VOM. 'SCHILLING'S DWARF'	DWARF SCHILLING'S HOLLY		PRESERVE
129	ALPINIA ZERUMBET 'VARIEGATA'	VARIEGATED SHELL GINGER		PRESERVE
130	JASMINUM VOLUBILE	WAX JASMINE		PRESERVE
131	ILEX VOM. 'SCHILLING'S DWARF'	DWARF SCHILLING'S HOLLY		PRESERVE
132	ALPINIA ZERUMBET 'VARIEGATA'	VARIEGATED SHELL GINGER		PRESERVE
133	JASMINUM VOLUBILE	WAX JASMINE		PRESERVE
134	ILEX VOM. 'SCHILLING'S DWARF'	DWARF SCHILLING'S HOLLY		PRESERVE
135	ALPINIA ZERUMBET 'VARIEGATA'	VARIEGATED SHELL GINGER		PRESERVE
136	JASMINUM VOLUBILE	WAX JASMINE		PRESERVE
137	ILEX VOM. 'SCHILLING'S DWARF'	DWARF SCHILLING'S HOLLY		PRESERVE
138	JASMINUM VOLUBILE	WAX JASMINE		TO BE REMOVED
139	VIBURNUM ODORATISSIMUM	SWEET VIBURNUM		TO BE REMOVED
140	VIBURNUM ODORATISSIMUM	SWEET VIBURNUM		PRESERVE

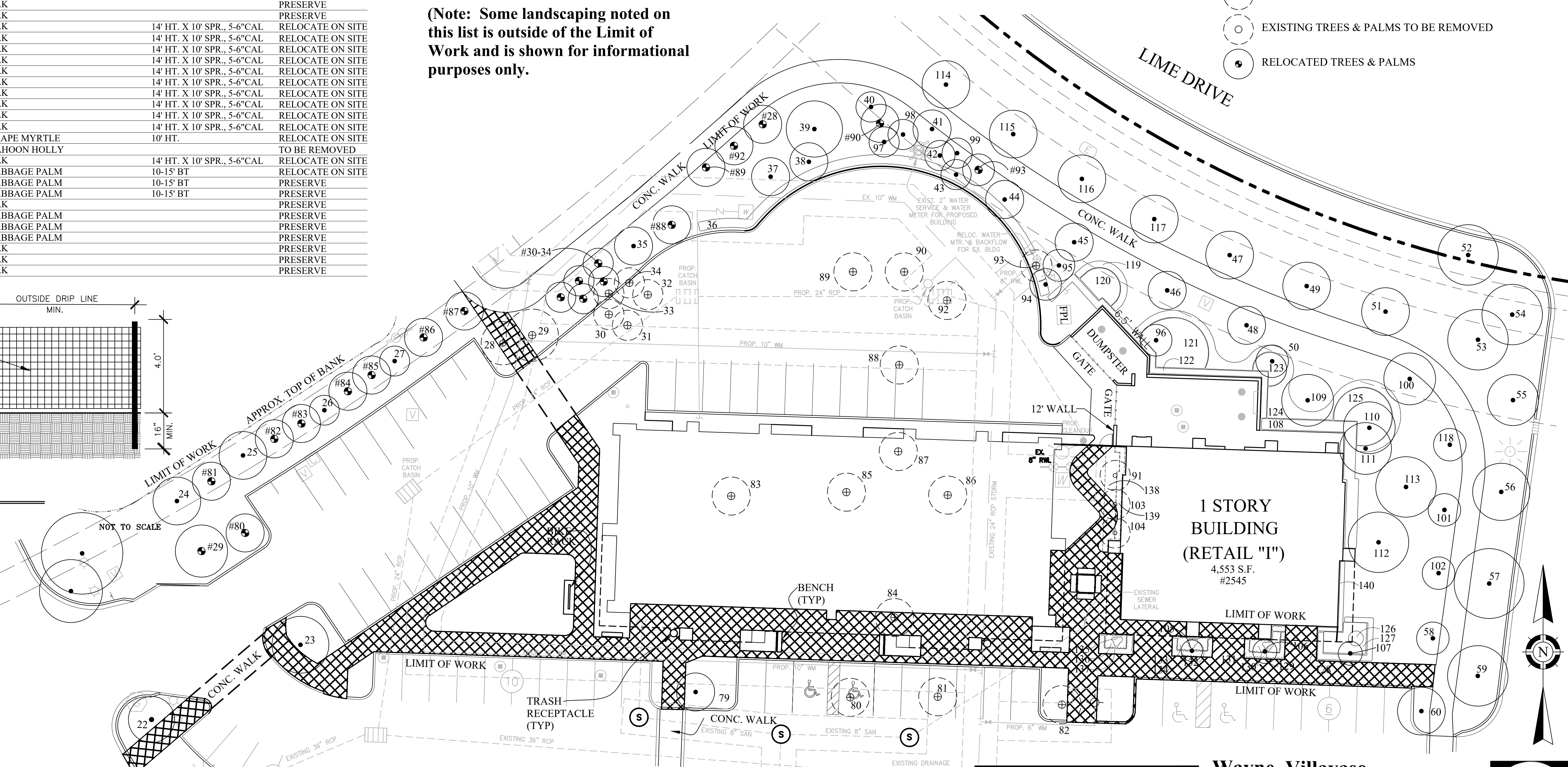
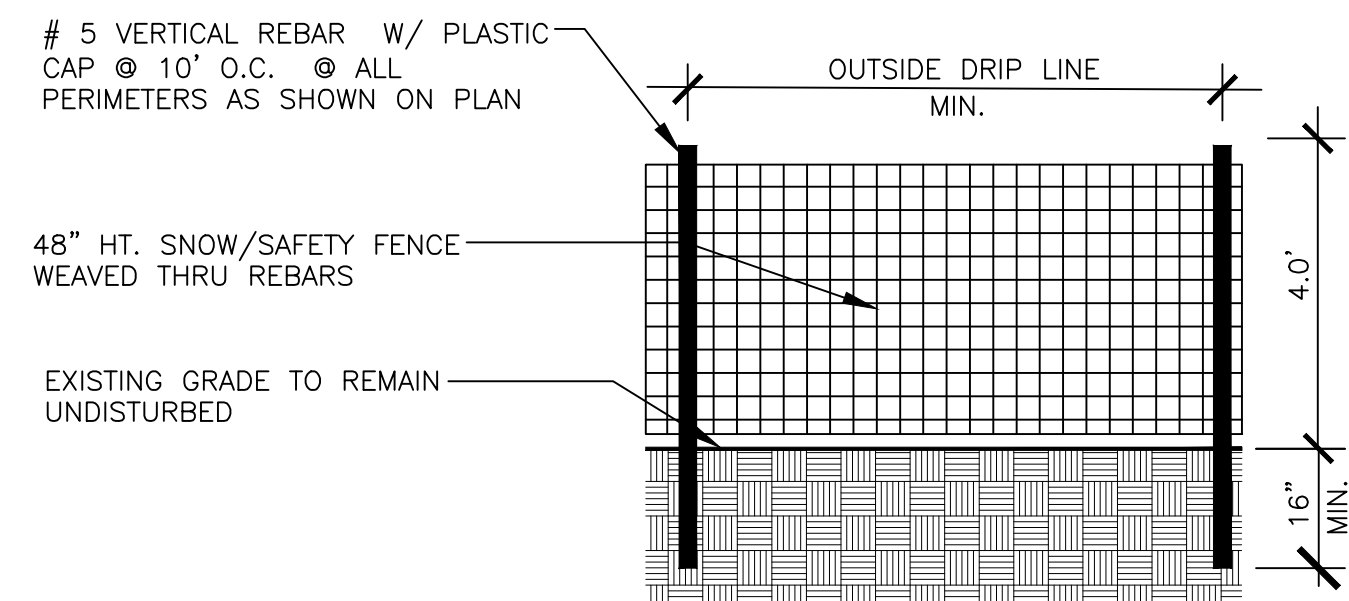
(Note: Some landscaping noted on this list is outside of the Limit of Work and is shown for informational purposes only.)



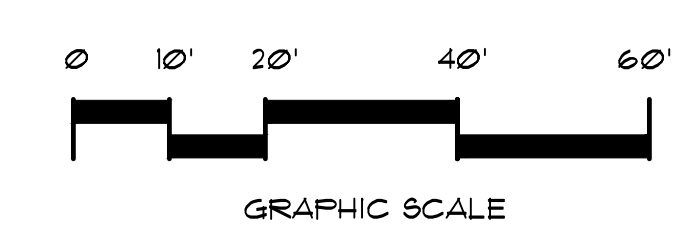
VICINITY MAP SCALE: 1"=300'

### EXISTING TREE SYMBOL LEGEND

- EXISTING TREES & PALMS TO REMAIN
- EXISTING TREES & PALMS TO BE RELOCATED
- EXISTING TREES & PALMS TO BE REMOVED
- RELOCATED TREES & PALMS



These plans are based on information/drawings by WDA received via e-mail on 4/25/16 & 5/2/16 and civil by HE received via e-mail on 3/25/16.

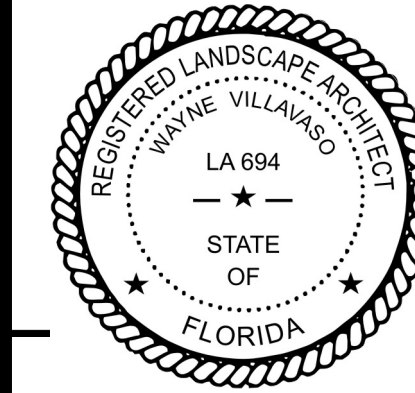


**Wayne Villavaso**  
**Landscape Architecture, Inc.**

268 Flamingo Drive West Palm Beach, FL 33401  
 Ph. (561) 820-1566 www.WVLAInc.com  
 Land Planning / Landscape Architecture FL., N.C., N.Y.

**WILLIAMSON DACAR ASSOCIATES**  
 ARCHITECTURE / ENGINEERING / PLANNING  
 15355 W. PALM BLVD., SUITE 106  
 CLEARWATER, FL 33760  
 PH. (727) 725-0951 www.williamsondacar.com

Architect: AA 0002541  
 Landscape Architect: WV 0000694



WELLINGTON GREEN PARCEL "F"  
 PHASE II RETAIL "H" MODIFICATION  
 PETITION NO. 16-18 (2016-08 ASA 53)  
 2545 SOUTH STATE ROAD 7  
 WELLINGTON, FLORIDA 33414

No.	Date	Revisions

No.	Date	Issues
1	06.15.16	100% CD - PERMIT SET

Phase:  
 Checked: WEV  
 Drawn: WEV

### EXISTING VEGETATION INVENTORY

WDA Proj. No.: 1526-01  
 Owner Proj. No.:  
 Scale: 1"=20'  
 Sheet No.

# L1.0

No. of Sheets: