

PLANT AND MATERIALS LIST

SYM	ITEM	SPECIFICATION	QTY
-----	------	---------------	-----

Relocated Trees & Palms

◇	rLI	LAGERSTROEMIA SP. CRAPE MYRTLE	10' HEIGHT; RELOCATED FROM ON-SITE	1
*◇	rQV	QUERCUS VIRGINIANA LIVE OAK	+/- 14-16' HT. 6-8" CAL. RELOCATE FROM ON-SITE	12
	rRR	ROYSTONIA ELATA FLORIDA ROYAL PALM	12' O.A. RELOCATED FROM ON-SITE	1
*◇	rSP	SABAL PALMETTO CABBAGE PALM	C.W./C.T. HT. VARIES; RELOCATE FROM ON-SITE INTO STAGGERED GROUP	6

Proposed Trees & Palms

	LL	LIGUSTRUM LUCIDUM LIGUSTRUM TREE	10' HT. X 8" SPR., M.T., TRIM TO 5' C.T. PER L.A., MATCHED SPECIMENS	3
*◇	QV	QUERCUS VIRGINIANA LIVE OAK	14' HT. X 7-8" SPR., 3.5" CAL., 5' C.T., MATCHED	6
	SS	SENA SURATTENSIS GLAUCCOUS CASSIA	14' HT. X 5-6" SPR., 5' C.T., FULL BRANCHING PATTERNS	5
	WB	WODYTIA BIFURCATA FOXTAIL PALM	12' G.W.; MATCHED, FLA. FANCY	7

Proposed Shrubs

*◇	COC	CHRYSOBALANUS ICACO 'RED TIP' RED TIP COCOPLUM	3 GAL., 24" HT. X 24" SPR., FULL TO BASE, 24" O.C.	105
◇	CRO	CODIAEUM VAR. 'PETRA' PETRA CROTON	3 GAL., 24" HT. X 24" SPR., FULL TO BASE, 24" O.C.	114
	IXN	IXORA 'NORA GRANT' NORA GRANT IXORA	3 GAL., 24" HT. X 24" SPR., FULL TO BASE, 24" O.C.	125
	JAS	JASMINE VOLUBILE WAX JASMINE	3 GAL., 24" HT. X 24" SPR., FULL TO BASE, 24" O.C.	239
	TAB	TABERNAEMONTANA PINKWHEEL JASMINE	3 GAL. 24" HT. X 24" SPR. FULL TO BASE, 36" O.C.	25
	VBS	VIBURNUM SUSPENSUM SANDANKWA VIBURNUM	3 GAL., 24" HT. X 24" SPR., FULL TO BASE, 24" O.C.	71

Proposed Groundcover

*◇	ILV	ILEX VOM. 'SCHILLINGS DWARF' SCHILLING'S DWARF HOLLY	3 GAL., 15" HT. X 15" SPR., FULL TO BASE, 24" O.C.	139
*◇	NEP	NEPHROLEPIS BISERRATA SWORD FERN	1 GAL., 12" HT. X 12" SPR., 18" O.C. FULL	53
	POD	PODOCARPUS MACROPHYLLA 'PRINGLES' PRINGLES JAPANESE YEW	3 GAL. 15" HT. X 15" SPR. FULL TO BASE, 24" O.C.	107
	RAP	RAPHIOLEPIS INDICA 'PINK' PINK INDIAN HAWTHORN	3 GAL., 14" HT. X 14" SPR., FULL TO BASE, 18" O.C.	70

Miscellaneous

FERT	FERTILIZER TAB # GRANULAR	PER PLANTING SPECIFICATIONS	TBD
MUL3	MULCH	SHREDDED EUCALYPTUS 3" DEEP	TBD
SOIL	PLANTING SOIL	PER PLANTING SPECIFICATIONS	TBD
SOD	STENOTAPHRUM SEC. 'FLORATAM' ST. AUGUSTINE FLORATAM SOD	FRESH SOLID SOD REPLACE AS NECESSARY	TBD

Shrub Species Mix

Req. # of Shrubs	Min. # of Species
1-10	2
11-100	3
101-150	4
151-200	5
200+	6

LANDSCAPE REQUIREMENTS

CATEGORY	REQUIREMENTS	REQUIRED	PROVIDED
INTERIOR LANDSCAPE (LANDSCAPING NOT IN PERIMETER BUFFERS OR VEHICULAR USE AREA) Total Site Area = 49,331 S.F.			
INTERIOR	1 TREE/2500 SF 3 SH / 2500 SF	19 TREES 59 SHRUBS	39 TREES* 449 SHRUBS**
FOUNDATION PLANTING 8' WIDE @ NEW BUILDING (COUNTED TOWARD INTERIOR REQUIREMENTS)	40% OF 420'=168' TOTAL 1 TREE/20 LF REQ. FNDT. SHRUB & G'COVER MASS	168' L.F. 8 TREES 257 SHRUBS 118 GCOVER	193' L.F. 8 TREES* 257 SHRUBS 118 GCOVER
VEHICULAR USE AREA (NOT COUNTED TOWARD INTERIOR REQUIREMENTS)			
TERMINAL ISLANDS	12' W. (EXCL. CURBS) W/ 1 TREE PER ISLAND	7 TREES	7 TREES*
INTERIOR ISLANDS	8' W. (EXCL. CURBS) 1 ISLAND PER 10 PARKING SPACES - 1 TREE/ISLAND	3 TREES	4 TREES*

* PROVIDED TREES INCLUDES EXISTING, PROPOSED, AND RELOCATED TREES & PALMS NOT IN VEHICULAR USE AREAS OR IN BUFFERS. EXISTING & NEW ROYAL & FOXTAIL PALMS CALC. AT 1:1; AND EXISTING, RELOCATED, & NEW CABBAGE PALMS CALC. AT 3:1

** INCLUDES PROPOSED SHRUBS

SHRUBS COUNTED TOWARDS MEETING LANDSCAPE REQUIREMENTS ARE A MINIMUM OF 24" IN HEIGHT IMMEDIATELY AFTER PLANTING.

THERE ARE SHRUBS AND GROUND COVERS INCLUDED IN THESE PLANS THAT ARE ABOVE THE CODE REQUIREMENTS AND NOT SHOWN IN THE REQUIREMENTS CHART ABOVE.

NOTES:

1. PLANTING PLAN MATCHES THE CHARACTER OF THE EXISTING MALL.

2. ALL MECHANICAL, ELECTRICAL, WATER EQUIPMENT, DUMPSTER ENCLOSURES, EXHAUST VENTS, ETC. LOCATED ON THE GROUND WILL BE ENTIRELY SCREENED FROM PUBLIC VIEW AS PER VILLAGE OF WELLINGTON ARTICLE 7 REQUIREMENTS.

3. IRRIGATION PLANS ARE PREPARED PER ARTICLE 7, CHAPTER 3.

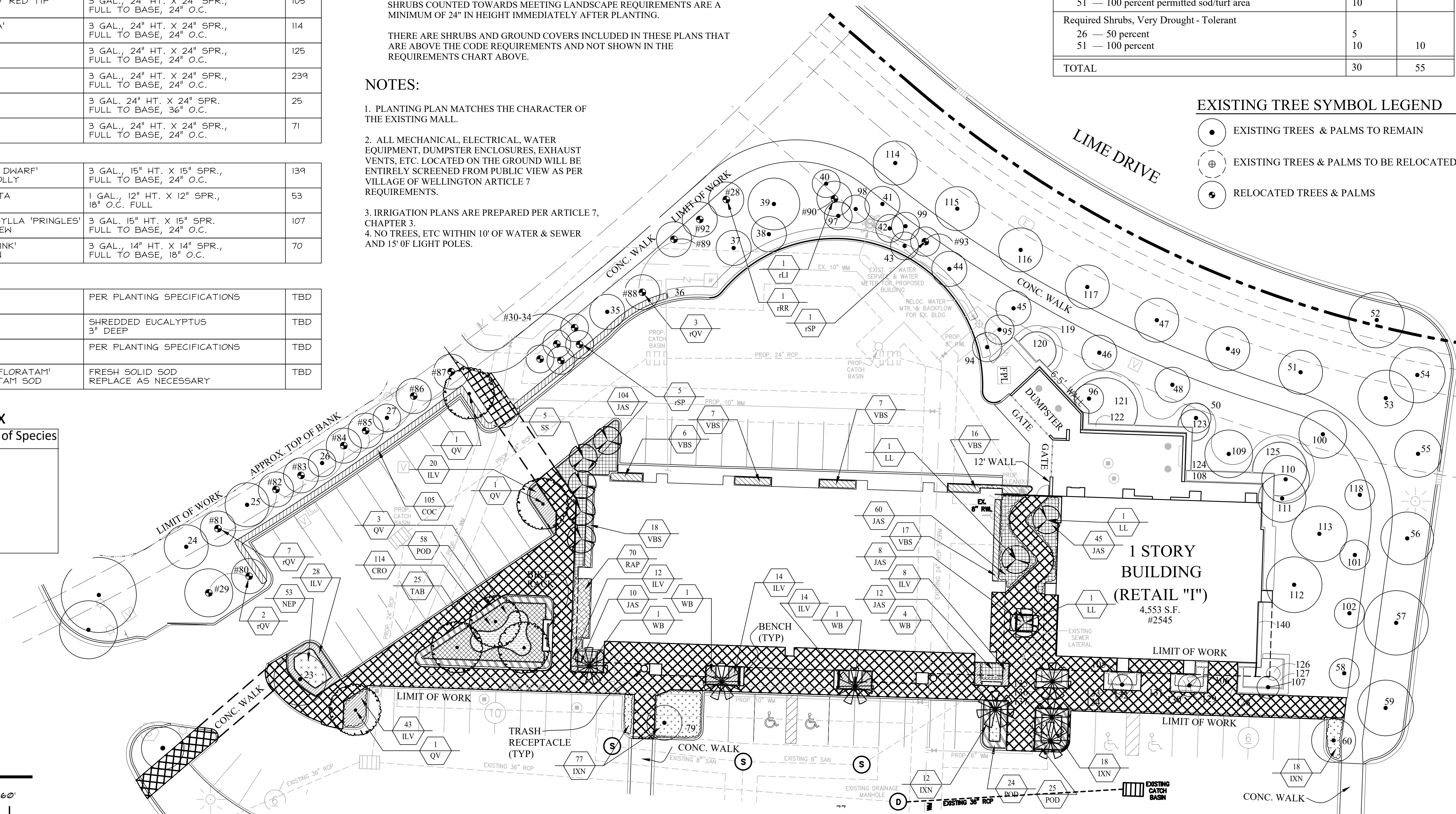
4. NO TREES, ETC WITHIN 10' OF WATER & SEWER AND 15' OF LIGHT POLES.

WATER CONVERSION POINT SCALE

Technique/Design Feature	Points	Points
Moisture - Sensing Controller (other than rain switch)	5	5
Drip/Trickle/Micro Irrigation System		
25 — 50 percent of system	5	
51 — 75 percent of system	7	
76 — 100 percent of system	10	
Irrigation Quality Effluent Irrigation		
25 — 50 percent of site	10	
51 — 90 percent of site	20	
91 — 100 Percent of site	30	
Florida Native Landscape		
25 — 50 percent of landscape areas	10	20
51 — 90 percent of landscape area	20	
91 — 100 percent of landscape area	30	
Required Trees, Very Drought - Tolerant		
26 — 50 percent	5	
51 — 100 percent	10	10
Extra Shade Trees, Very Drought - Tolerant		
26 — 50 percent more trees than required	10	10
51 — 100 percent more trees than required	20	
Sod/Turf Area Alternatives		
26 — 50 percent permitted sod/turf area	5	
51 — 100 percent permitted sod/turf area	10	
Required Shrubs, Very Drought - Tolerant		
26 — 50 percent	5	
51 — 100 percent	10	10
TOTAL	30	55

EXISTING TREE SYMBOL LEGEND

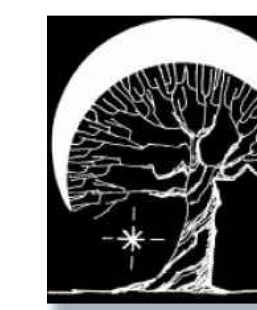
- EXISTING TREES & PALMS TO REMAIN
- ⊕ EXISTING TREES & PALMS TO BE RELOCATED
- ⊙ RELOCATED TREES & PALMS



SEE SHEET L-1.1 FOR EXISTING VEGETATION INVENTORY

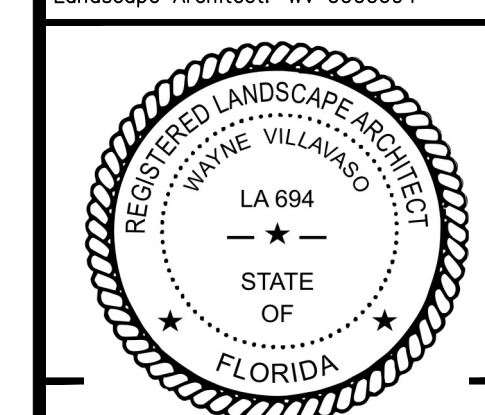
Wayne Villavaso
Landscape Architecture, Inc.

268 Flamingo Drive West Palm Beach, FL 33401
Ph. (561) 820-1566 www.WVLAInc.com
Land Planning / Landscape Architecture FL., N.C., N.Y.



WILLIAMSON DACAR ASSOCIATES
ARCHITECTURE ENGINEERING PLANNING
1999 W. PALM BEACH BLVD., SUITE 100
CLEARWATER, FL 33760
PH (727) 725-0957 www.williamsondacar.com

Architect: AA 0002541
Landscape Architect: WV 0000694



WELLINGTON GREEN PARCEL 'F'
PHASE II RETAIL 'H' MODIFICATION
PETITION NO. 16-18 (2016-08 ASA 53)
2545 SOUTH STATE ROAD 7
WELLINGTON, FLORIDA 33414

Revisions of Drawings

No.	Date	Revisions

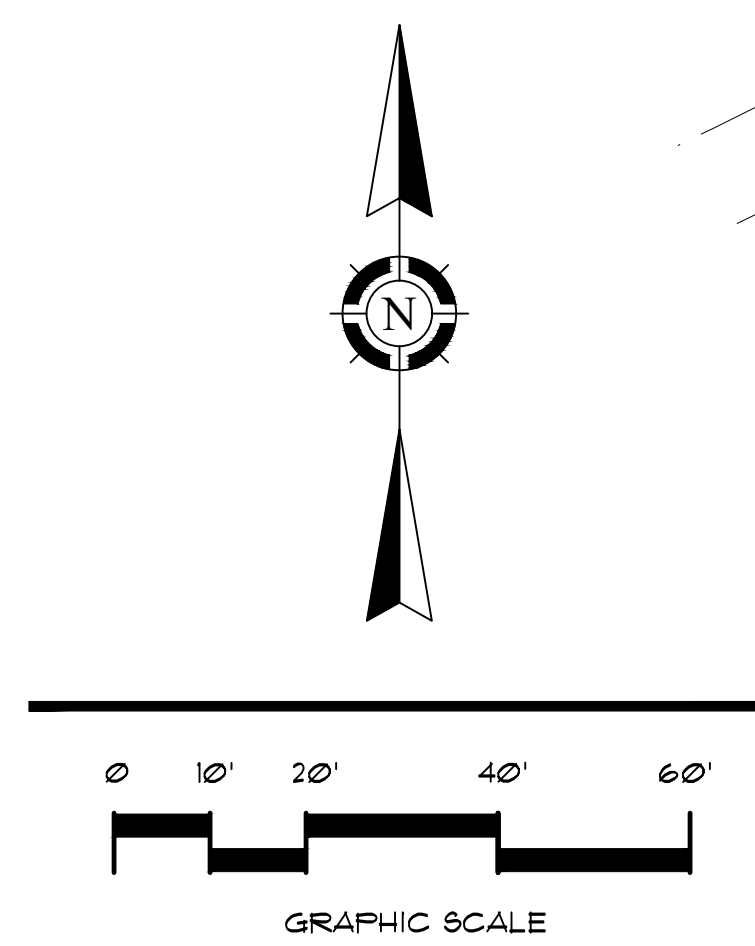
Issues of Drawings

No.	Date	Issues
1	06.15.16	100% CD - PERMIT SET

Phase:
Checked: WEV
Drawn: WEV
Drawing Title

PLANTING PLAN

WDA Proj. No.: 1526-01
Owner Proj. No.:
Scale: 1"=20'
Sheet No.:
L2.0
No. of Sheets:



These plans are based on information/drawings by WDA received via e-mail on 4/25/16 & 5/2/16 and civil by HE received via e-mail on 3/25/16.