

AIR DEVICE SCHEDULE							
PLAN MARK	QTY.	TITUS MODEL NO.	FACE SIZE	NECK SIZE	FLEX SIZE	TYPE	NOTES
A	11	TMS	24"x24"	10"ø	10"ø	DIFF	1,2,3
B	1	TMS	24"x24"	6"ø	6"ø	DIFF	1,2,3
C	2	TMS	12"x12"	6"ø	6"ø	DIFF	2,3
D	4	50F	24"x24"	22"x22"	14"ø	RG	2,3,4
E	2	50F	24"x24"	22"x22"	10"ø	TG	2,4
F	2	50F	24"x24"	22"x22"	8"ø	TG	2,4

\* OR APPROVED EQUAL

NOTES:  
 1. ALL SUPPLY DIFFUSERS TO HAVE 4-WAY THROW UNLESS NOTED OTHERWISE  
 2. FRAME SHALL FIT LAY-IN CEILING MODULE  
 3. PROVIDE & INSTALL MANUAL VOLUME DAMPER  
 4. PROVIDE SQUARE TO ROUND TRANSITION AS REQUIRED.

EXISTING ROOFTOP UNIT SCHEDULE (RTU-1 + RTU-2)										
MFR.	MODEL NO.	BASE UNIT WT.	UNIT SIZE	VOLTS	HZ	PH	MCA	MIN. OUTSIDE AIR CFM	TOTAL CFM	
CARRIER	50HJ-006--	465 LBS.	5 TONS	208	60	3	48.9	RTU-1 405 RTU-2 410	2000	
COOLING CAPACITY		SEER	ELEC. HEAT CAPACITY	EVAP. SIZE	COIL ROWS	EVAP. FAN MOTOR	FILTERS			
43.39 MBH	63.02 MBH	13	*12 KW	5.5 SQ.FT.	4	2.40 BHP	NO.	SIZE	TYPE	
							2	16x25x2	T/A	

EXISTING ACCESSORIES TO REMAIN. FIELD VERIFY. ENSURE IN PROPER WORKING ORDER.  
 \*FIELD VERIFY.

HVAC SYMBOLS LEGEND		
☒ SUPPLY AIR DIFFUSER	— G — GAS LINE	R.A.G. RETURN AIR GRILLE
☒ RETURN AIR GRILLE	— D — CONDENSATE DRAIN LINE	DIFF. DIFFUSER
R.D. REF. DISCHARGE LINE	TE TOILET EXHAUST	M.D. MANUAL DAMPER
R.S. REF. SUCTION LINE	M MOTORIZED DAMPER	F.D. FIRE DAMPER
O.A. OUTDOOR AIR	S SMOKE DETECTION DEVICE	F.C. FLEXIBLE CONNECTION
R.A. RETURN AIR	T THERMOSTAT	S.E. SMOKE EXHAUST
S.A. SUPPLY AIR	TS REMOTE THERMOSTAT SENSOR	☒ AIR DEVICE TYPE
— DAMPER	SD SMOKE DETECTOR	☒ AIR VOLUME IN CUBIC FEET/MINUTE (CFM)
● SPRINKLER HEAD		

**MECHANICAL CONTRACTOR'S NOTES**

ALL OF THE MECHANICAL AND SPRINKLER WORK IS NOT NECESSARILY SHOWN OR NOTED ON THESE DRAWINGS. THE CONTRACTORS SHALL VISIT THE JOB SITE AND VERIFY ALL EXISTING CONDITIONS RELATED TO THE WORK PRIOR TO BIDDING. THOSE ITEMS NOT SHOWN OR NOTED, BUT ARE DEEMED NECESSARY FOR REMOVAL OR RELOCATION BY THE OWNER OR HIS REPRESENTATIVE, SHALL BE PART OF THIS CONTRACT. THE SUBMISSION OF THE PROPOSALS SHALL BE CONSIDERED AS EVIDENCE THAT THE CONTRACTORS HAVE VISITED THE SITE. NO EXTRA PAYMENTS WILL BE ALLOWED FOR EXTRA WORK MADE NECESSARY BY THE CONTRACTOR'S FAILURE TO VISIT THE JOB SITE.

**DUCTWORK NOTE**

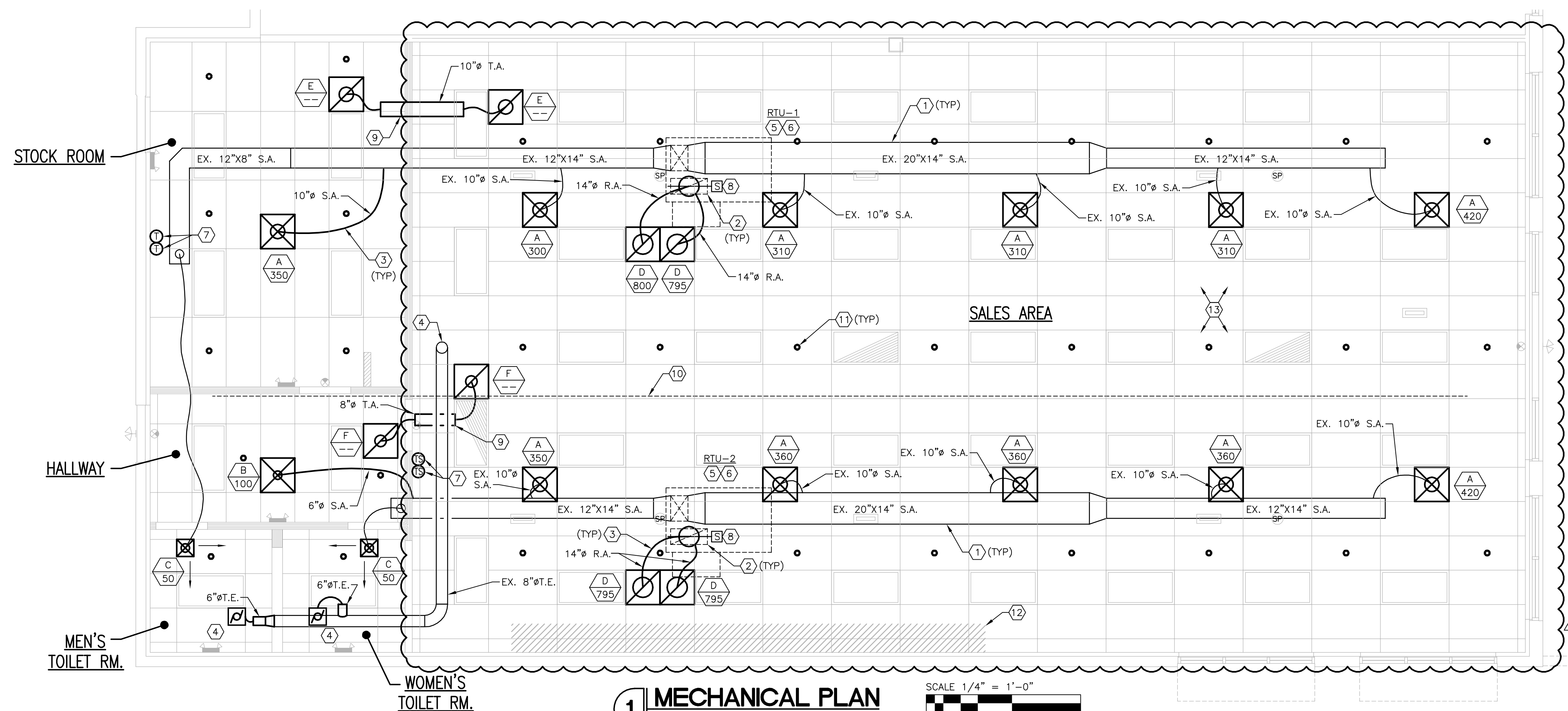
CONTRACTOR MUST LOCATE NEW DUCTWORK TO PROVIDE 9'-8" CEILING HEIGHT.

DIFFUSER/RETURN GRILLES SHOULD NOT BE LOCATED OVER AND/OR WITHIN 4" OF SALES AREA PERIMETER WALL FIXTURES

**IMPORTANT NOTE**

DUCT WORK TO BE LOCATED BETWEEN BEAMS AND THROUGH JOIST WHERE POSSIBLE TO MAINTAIN CEILING HEIGHTS MENTIONED ABOVE. AT START OF CONSTRUCTION, CONTRACTOR TO VERIFY IN FIELD STRUCTURAL ELEMENTS THAT MAY CONFLICT WITH DUCT LOCATIONS PRIOR TO BID, PURCHASING, AND INSTALLING - COORDINATE WITH VITAMIN SHOPPE'S ARCHITECT/ENGINEER IF DUCTWORK ON DRAWING IS NOT ABLE TO BE INSTALLED PER PLAN TO ENSURE CEILING HEIGHTS.

- HVAC AND SPRINKLER KEYED NOTES**
- EXISTING SUPPLY (DUCTBOARD AND FLEX) AIR DUCTWORK TO REMAIN. FIELD VERIFY EXACT SIZES, LOCATIONS AND CONDITION. REPAIR AND REPLACE ANY DAMAGED DUCTBOARD/FLEX DUCT AS REQUIRED. ANY NEW SUPPLY/RETURN DUCTWORK ADDED TO HAVE MIN R-VALUE OF R-6.
  - EXISTING RETURN AIR DUCTWORK TO REMAIN. FIELD VERIFY EXACT LOCATIONS. DUCT DIMENSIONS ARE CLEAR INTERNAL AIR PATH DIMENSIONS. PATCH/REPAIR/SEAL AIR TIGHT/REPLACE, AND PROVIDE NEW INSULATION AS REQUIRED. REFER TO SHEET M3.0 FOR ADDITIONAL INFORMATION.
  - FLEXIBLE DUCT, MAXIMUM LENGTH 5'-0" (TYPICAL) PROVIDED AND INSTALLED BY LANDLORD'S HVAC CONTRACTOR. PROVIDE SMOOTH TRANSITION AND PROPER SUPPORT PER SMACNA. REFER TO SCHEDULE FOR FLEXIBLE DUCT SIZES. EXISTING FLEX DUCT CAN BE REUSED IF ADEQUATE SIZE AND LENGTH. MODIFY TO CONNECT TO NEW DIFFUSERS/GRILLES. FIELD VERIFY.
  - NEW "NUTONE MODEL 672R" SERIES TOILET EXHAUST FAN PROVIDED AND INSTALLED BY LANDLORD'S CONTRACTOR, 110 CFM @ 0.15 WG SP, 120v/1ph/60hz. 6"ø EXHAUST DUCT TO BE CONNECTED TO EXISTING 8" EXHAUST DUCT THRU ROOF. FIELD VERIFY LOCATION AND SIZE. ENSURE 10' MINIMUM DISTANCE FROM ANY FRESH AIR INTAKE; WIRE TO LIGHT CIRCUIT VIA RELAY; COORDINATE WITH ELECTRICAL CONTRACTOR.
  - EXISTING ROOFTOP UNIT TO REMAIN. LANDLORD'S HVAC CONTRACTOR IS TO CLEAN COILS, LUBRICATE MOTOR, ADJUST/REPLACE BELTS, CHANGE FILTERS, INSPECT COIL FOR LEAKS, REPLACE FILTERS AND RECHARGE REFRIGERANT. FIELD VERIFY EXACT CONDITIONS AND LOCATION PRIOR TO SUBMITTING BID. REPORT ANY DEFICIENCIES TO VITAMIN SHOPPE'S ON-SITE REPRESENTATIVE PRIOR TO MAKING REPAIRS. ADJUST UNIT TO DELIVER CFM PER SCHEDULE.
  - EXISTING CONDENSATE DRAIN ON ROOF WITH P-TRAP AND TERMINATING NEAR ROOF DRAIN TO REMAIN.
  - NEW COMMERCIAL GRADE PROGRAMMABLE THERMOSTAT (WHITE RODGERS, BLUE COMMERCIAL IF95-0680 OR EQUAL) AND REMOTE SENSORS (WHITE RODGERS F145-1328 OR EQUAL) SUPPLIED AND INSTALLED BY LANDLORD'S HVAC CONTRACTOR. COORDINATE WITH ELECTRICAL CONTRACTOR. MOUNTING HEIGHT 4'-0" AFF. REFER TO SHEET M3.0. REFER TO ARCHITECTURAL FIXTURE PLAN PRIOR TO LOCATING THERMOSTATS AND SENSORS. VERIFY MODEL OF THERMOSTAT WITH VITAMIN SHOPPE PRIOR TO PURCHASING.
  - LANDLORD'S HVAC CONTRACTOR TO ENSURE EXISTING RETURN AIR DUCT SMOKE DETECTION DEVICE. SMOKE DETECTION DEVICE IS TO BE INTERLOCKED WITH ROOFTOP UNIT TO SHUT THE UNIT DOWN UPON THE DETECTION OF SMOKE. ACTIVATION OF A SMOKE DETECTOR SHALL ACTIVATE A VISIBLE AND AUDIBLE SIGNAL IN AN APPROVED LOCATION. DUCT SMOKE DETECTOR TROUBLE CONDITIONS SHALL ACTIVATE A VISIBLE OR AUDIBLE SIGNAL IN AN APPROVED LOCATION AND SHALL BE IDENTIFIED AS AIR DUCT DETECTOR TROUBLE. COORDINATE WITH ELECTRICAL CONTRACTOR. IF NOT IN GOOD WORKING ORDER, LANDLORD'S HVAC CONTRACTOR TO REPLACE DUCT SMOKE DETECTOR AS REQUIRED.
  - NEW LOW PRESSURE, TRANSFER AIR DUCT SUPPLIED AND INSTALLED BY LANDLORD'S HVAC CONTRACTOR. PROVIDE TRANSITIONS AS REQUIRED, DUCT DIMENSIONS ARE CLEAR INTERNAL AIR PATH DIMENSIONS. HOLD ALL DUCTWORK AS HIGH AS POSSIBLE AND/OR PRACTICAL IN JOIST SPACE.
  - EXISTING 4" SPRINKLER MAIN. FIELD VERIFY EXACT SIZE AND LOCATION.
  - LANDLORD'S CONTRACTOR SHALL PROVIDE NEW SPRINKLER HEAD IN NEW CEILING. MODIFY SUPPLY PIPING AS REQUIRED. SPRINKLER HEADS TO BE LOCATED IN THE CENTER OF THE TILE.
  - FIXTURES THAT GO TO CEILING. DO NOT PUT GRILLES/DIFFUSERS/SPRINKLERS ABOVE IN THIS LOCATION. REFER TO ARCHITECTURAL SHEETS FOR EXACT LOCATION.
  - EXISTING HVAC EQUIPMENT, DUCTWORK, HANGERS, ASSOCIATED CONTROLS, ETC. NOT SCHEDULED TO BE RELOCATED OR RE-USED SHALL BE DISCONNECTED AND REMOVED FROM JOB SITE. DO NOT JUST ABANDON. FIELD VERIFY EXACT CONDITIONS AND LOCATIONS PRIOR TO SUBMITTING A BID.



**1 MECHANICAL PLAN**  
 SCALE: 1/4" = 1'-0"  
 SCALE 1/4" = 1'-0"  
 1" 0' 1' 2' 4' 8'

**ROBERT L. QUEATHEN**  
 ENGINEER  
 1850 CRAIG ROAD, SUITE 300 ST. LOUIS, MO 63146  
 PH. (314) 415-2400 FAX (314) 415-2500  
 www.rlcvc.com

REGISTRATION SEAL

REVISIONS:

NO.	DATE	OWNER COMMENTS
01	06/20/16	

PROJECT NO. 150310  
 DATE: 10/14/15  
 DRAWN BY: OYK  
 STORE NUMBER: 404  
 SCALE: AS NOTED

SALES AREA 2,420 S.F.  
 NON SALES 588 S.F.  
 GROSS AREA 3,008 S.F.

SHEET TITLE:  
**MECHANICAL PLAN**

theVitamin Shoppe  
 5463 LYONS ROAD, SUITE 'A'  
 COCONUT CREEK, FL. 33073

SHEET NO:  
**M1.0**