

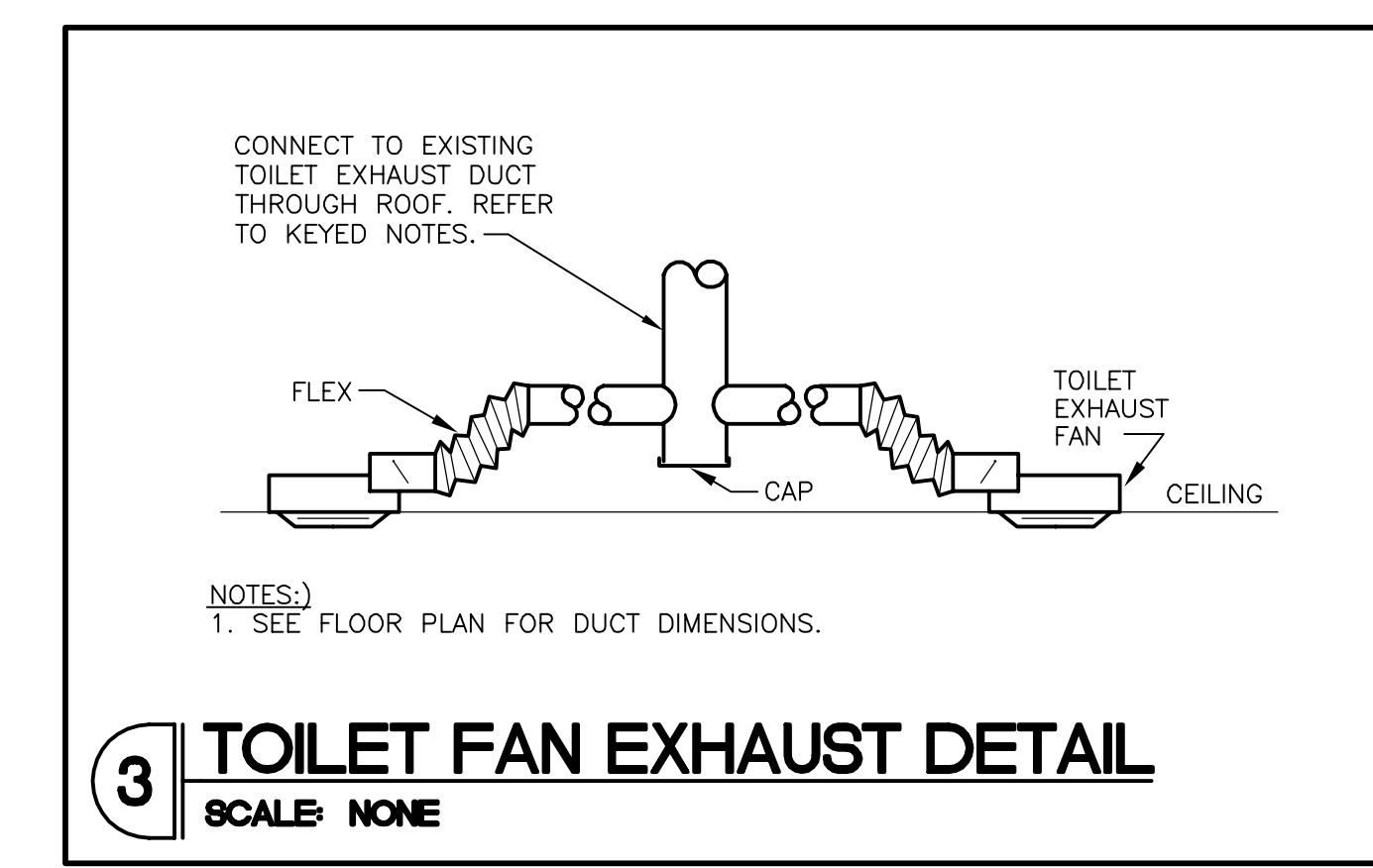
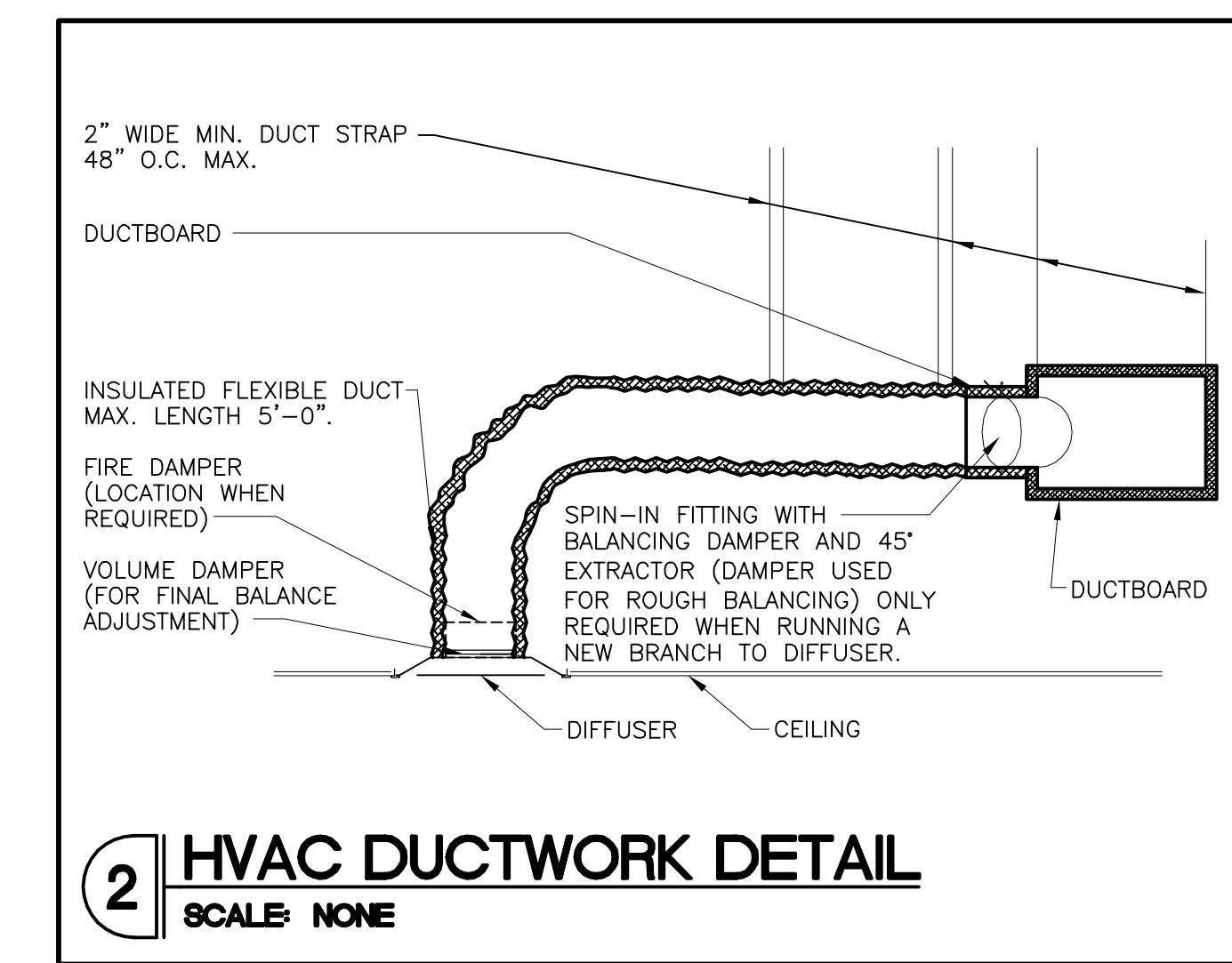
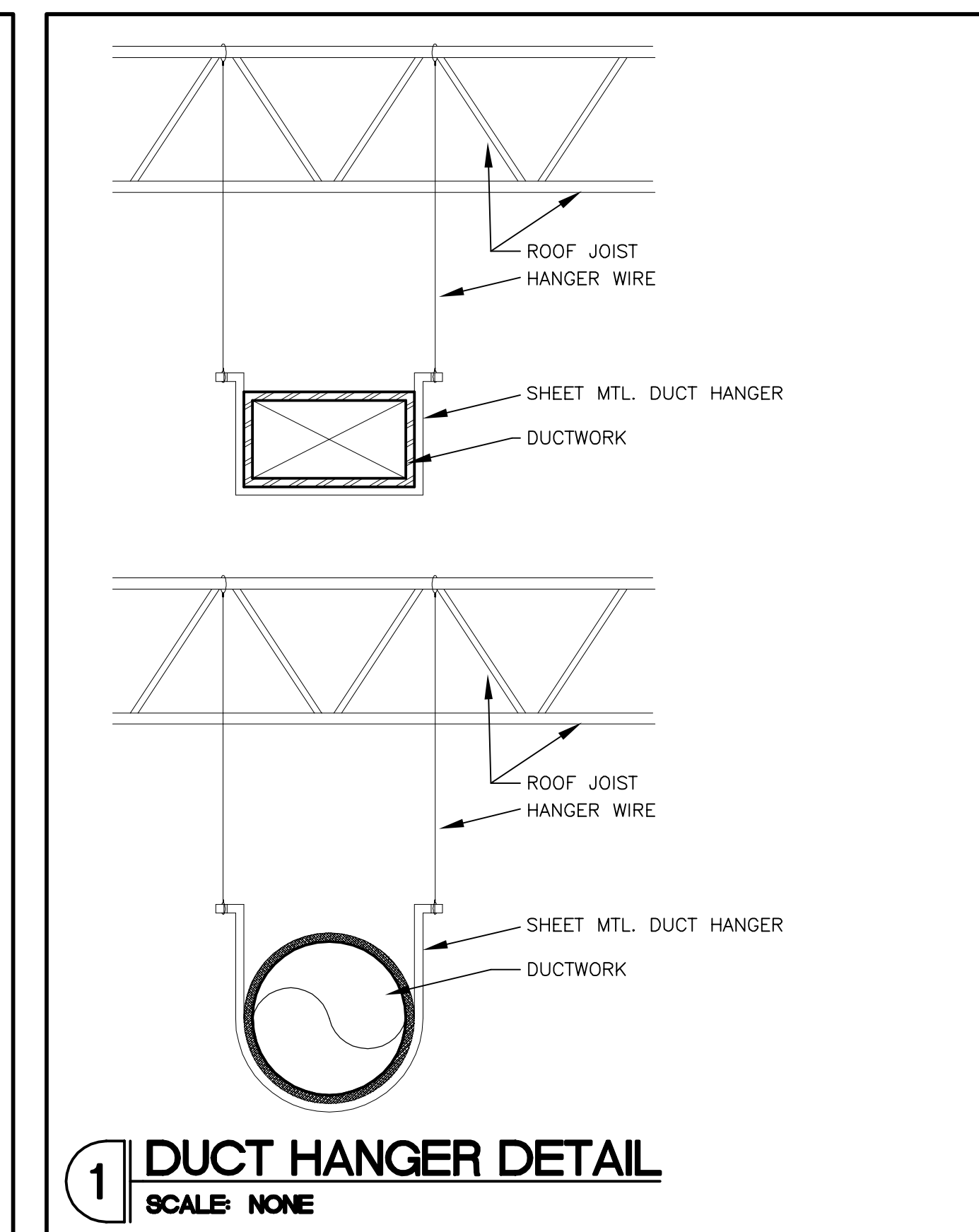
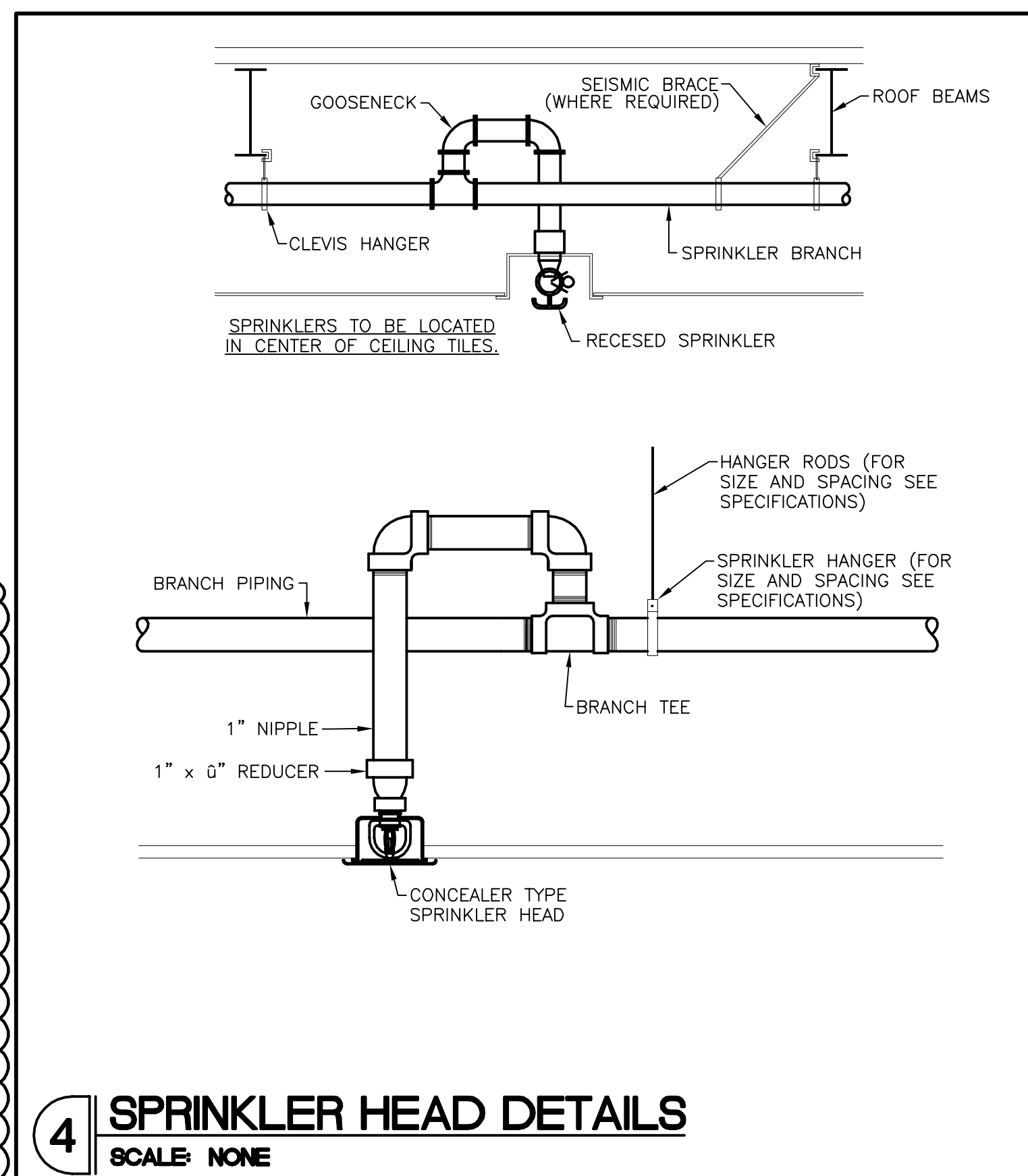
OUTSIDE AIR SCHEDULE													
DESCRIPTION	AREA (SQ. FT.)	AREA OUTDOOR AIR RATE PER IMC TABLE 403.3 (RA)	AREA OUTDOOR AIR (RaAz)	OCCUPANT LOAD RATE PER IMC TABLE 403.3 (PEOPLE/1000 SQ. FT.)	OCCUPANCY c x E/1000 (Pz)	OCCUPANT OUTDOOR AIR RATE PER IMC TABLE 403.3 (Rp)	OCCUPANT OUTDOOR AIR (RpPz)	BREATHING ZONE OUTDOOR AIR (Vbz = RpPz + RaAz)	ZONE AIR DISTRIBUTION EFFECTIVENESS (Ez)	ZONE OUTDOOR AIR (Voz = Vbz/Ez)	ZONE OUTDOOR AIR REQUIRED	SUPPLY AIR DESIGN (Vpz)	OUTDOOR AIR FRACTION (Zp = Voz/Vpz)
SALES	2324	0.12	278.9	15	35.0	7.5	262.5	541.4	0.8	676.7	752.0	3450	0.20
STOCK ROOM	299	0.12	35.9		0.0		0.0	35.9	0.8	44.9	50.0	350	0.13
HALLWAY	112	0.06	6.7		0.0		0.0	6.7	0.8	8.4	10.0	100	0.08
TOTALS	2735									730.0			
TOTAL REQUIRED OUTDOOR AIR			811	TOTAL OUTDOOR AIR PROVIDED BY HVAC UNITS			815						
CALCULATIONS BASED ON 2014 FLMC													Ev

NOTE: TOILET ROOM SQUARE FOOTAGE IS NOT INCLUDED IN THE OUTSIDE AIR AND TOTAL CFM AMOUNTS FOR THIS SCHEDULE

HVAC CALCULATIONS						
ZONE LOADS	DESIGN COOLING			DESIGN HEATING		
	Details	Sensible (BTU/hr)	Latent (BTU/hr)	Details	Sensible (BTU/hr)	Latent (BTU/hr)
Window & Skylight Solar Loads	411 R²	8975	-	411 R²	-	-
Wall Transmission	2014 R²	1682	-	2014 R²	2591	-
Roof Transmission	2837 R²	19129	-	2837 R²	8208	-
Window Transmission	411 R²	5800	-	411 R²	10839	-
Skylight Transmission	0 R²	0	-	0 R²	0	-
Door Loads	0 R²	0	-	0 R²	0	-
Floor Transmission	2837 R²	0	-	2837 R²	0	-
Partitions	0 R²	0	-	0 R²	0	-
Ceiling	0 R²	0	-	0 R²	0	-
Overhead Lighting	2223 W	5688	-	0	0	-
Task Lighting	0 W	0	-	0	0	-
Electric Equipment	709 W	2150	-	0	0	-
People	41	6862	8350	0	0	0
Infiltration	-	1592	2770	-	5183	0
Miscellaneous	-	9069	0	-	0	0
Safety Factor	0% / 0%	0	0	0%	0	0
>> Total Zone Loads	-	60947	11120	-	26820	0
Zone Conditioning	-	71671	11120	-	26610	0
Plenum Wall Load	0%	0	-	0	0	-
Plenum Roof Load	0%	0	-	0	0	-
Plenum Lighting Load	0%	0	-	0	0	-
Return Fan Load	4000 CFM	0	-	4000 CFM	0	-
Ventilation Load	815 CFM	10710	22575	815 CFM	20889	0
Supply Fan Load	4000 CFM	4448	-	4000 CFM	-4448	-
Space Fan Coil Fans	-	0	-	-	0	-
Duct Heat Gain / Loss	0%	0	-	0%	0	-
>> Total System Loads	-	86829	33695	-	43052	0
Central Cooling Coil	-	86829	33699	-	0	0
Central Heating Coil	-	0	-	-	43052	-
>> Total Conditioning	-	86829	33699	-	43052	0

Key: Positive values are clg loads  
Negative values are htg loads

City Name ..... Coconut Creek  
Location ..... Florida  
Latitude ..... 26.2 Deg.  
Longitude ..... 80.2 Deg.  
Elevation ..... 7.0 ft  
Summer Design Dry-Bulb ..... 91.0 °F  
Summer Coincident Wet-Bulb ..... 77.0 °F  
Summer Daily Range ..... 11.4 °F  
Winter Design Dry-Bulb ..... 46.0 °F  
Winter Design Wet-Bulb ..... 38.6 °F  
Atmospheric Clearness Number ..... 0.90  
Average Ground Reflectance ..... 0.20  
Soil Conductivity ..... 0.800 BTU/(hr-ft²-F)  
Local Time Zone (GMT +/- N hours) ..... 5.0 hours  
Consider Daylight Savings Time ..... No  
Simulation Weather Data ..... N/A  
Current Data is ..... User Modified  
Design Cooling Months ..... January to December



ROBERT L. QUEATHEN  
ENGINEER  
1850 CRAIG ROAD, SUITE 300  
ST. LOUIS, MO 63146  
PH. (314) 415-2400 FAX (314) 415-2800  
www.rlcvc.com

REGISTRATION SEAL

REVISIONS:

NO.	DATE	OWNER COMMENTS
01K		
02	06/20/16	

PROJECT NO. 150310  
DATE 10/14/15  
DRAWN BY: OYK  
STORE NUMBER: 404  
SCALE: AS NOTED

SALES AREA 2,420 S.F.  
NON SALES 588 S.F.

GROSS AREA 3,008 S.F.  
SHEET TITLE:

MECHANICAL DETAILS

theVitamin Shoppe  
5463 LYONS ROAD, SUITE 'A'  
COCONUT CREEK, FL. 33073

SHEET NO:

M2.0