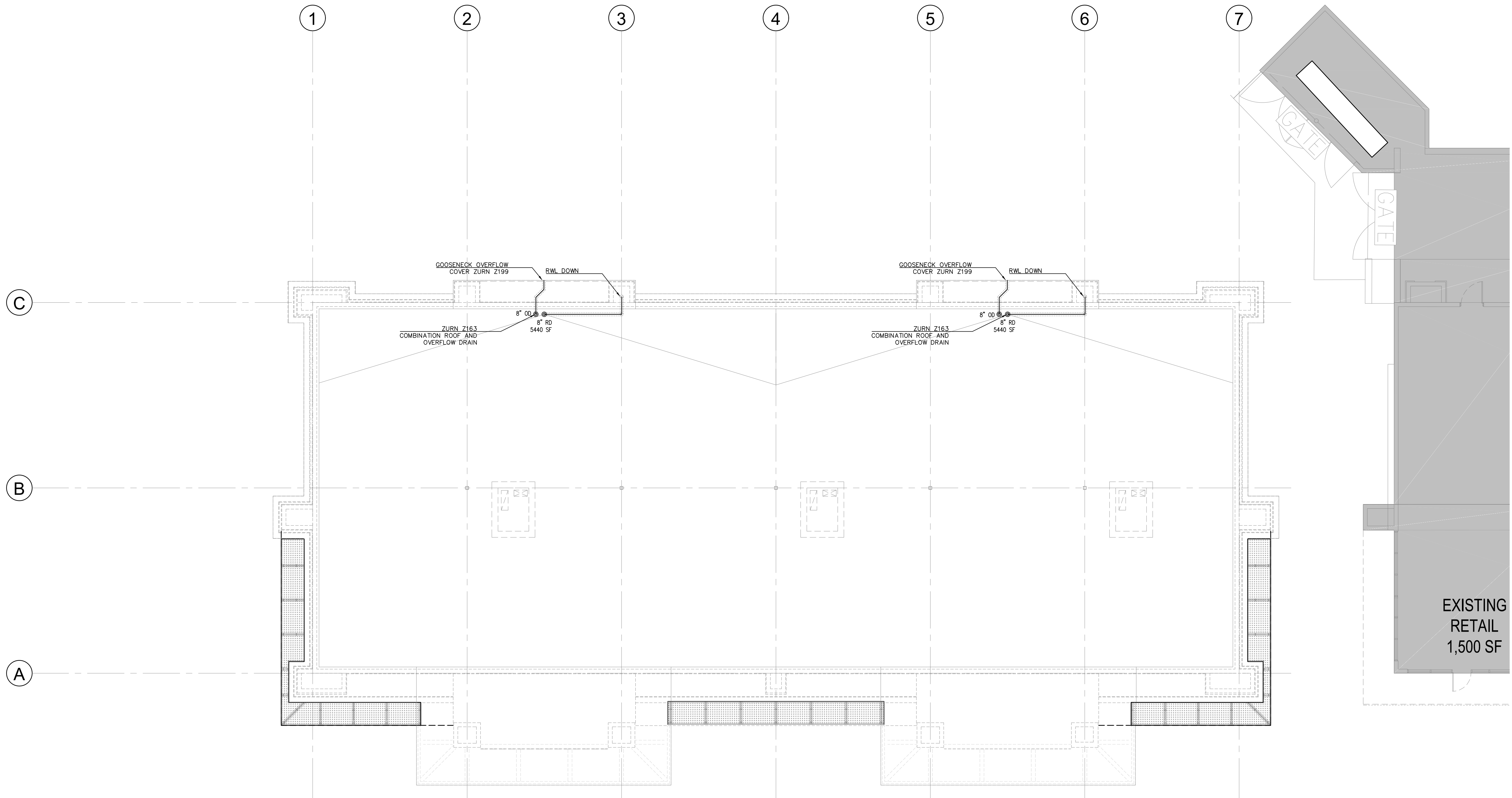


THIS DOCUMENT CONTAINS COPYRIGHTED MATERIAL AND TRADE SECRET INFORMATION BELONGING EXCLUSIVELY TO WILLIAMSON DACAR ASSOCIATES, INC. ANY REPRODUCTION OR TRANSMISSION OF THIS INFORMATION, IN WHOLE OR IN PART, WITHOUT THE WRITTEN PERMISSION OF WILLIAMSON DACAR ASSOCIATES, INC. IS PROHIBITED. WILLIAMSON DACAR ASSOCIATES, INC. IS AN EQUAL OPPORTUNITY EMPLOYER.

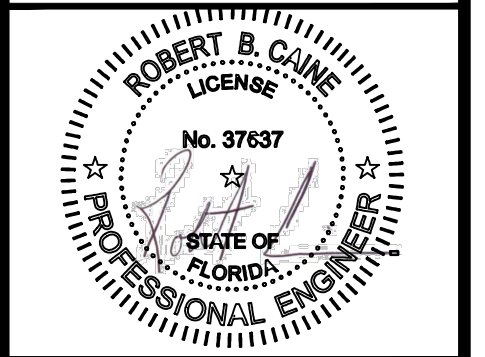


PLUMBING SITE ROOF PLAN  
SCALE: 1/8" = 1'-0"

**WILLIAMSON DACAR ASSOCIATES**  
ARCHITECTURE ENGINEERING PLANNING  
15550 CLEARWATER DRIVE SUITE 100  
CLEARWATER, FL 33760  
PH: (727) 253-0351 WWW.WILLIAMSONDACAR.COM

Architect: AA 0002541  
Engineering: EB 0006884

**project CANE ENGINEERING INCORPORATED**  
RESPONSIVE ENGINEERING  
MECHANICAL ELECTRICAL PLUMBING/FIRE PROTECTION  
1744 EAST SQUARE PLAZA SUITE #1  
P.O. BOX 200000 CLEARWATER, FL 33760  
WWW.PROJECTCANE.COM PH: 727-922-4400



WELLINGTON GREEN PARCEL "F"  
PHASE II RETAIL "H" MODIFICATION  
2548 SOUTH STATE ROAD 7  
WELLINGTON, FLORIDA 33414

EXISTING  
RETAIL  
1,500 SF

Revisions of Drawings		
No.	Date	Revisions

Issues of Drawings		
No.	Date	Issues
1	06.15.16	100% CD - PERMIT SET

Phase:  
Checked:  
Drawn: BDL

Drawing Title  
**PLUMBING ROOF PLAN**

WDA Proj. No.: 1526-01  
Owner Proj. No.:  
Scale: AS NOTED

Sheet No.  
**P-2.2**  
No. of Sheets: