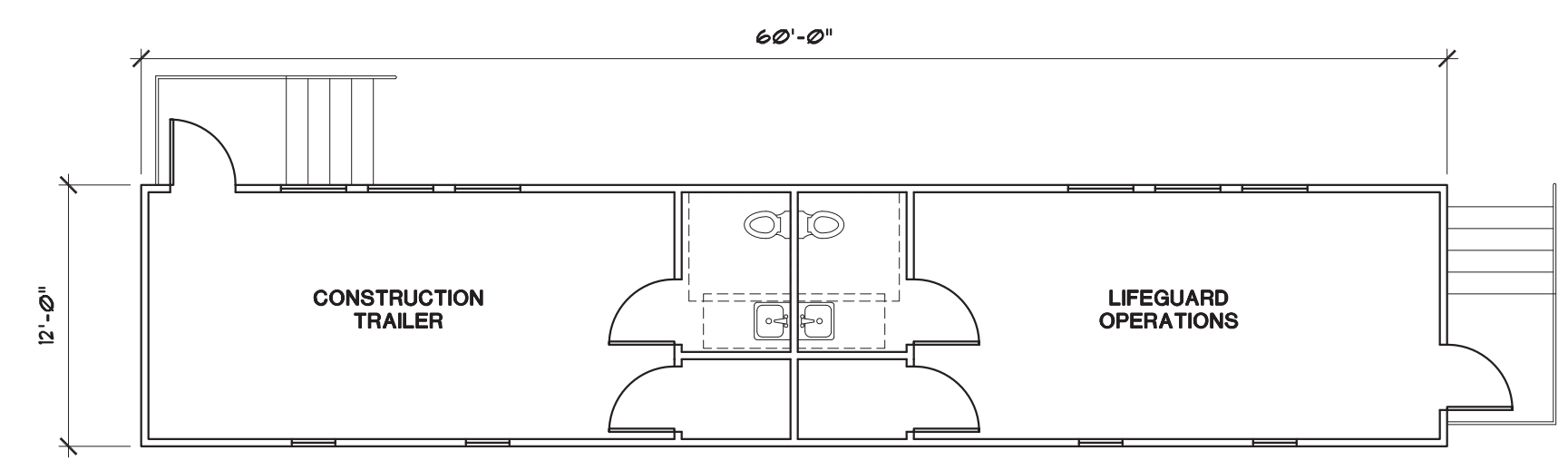
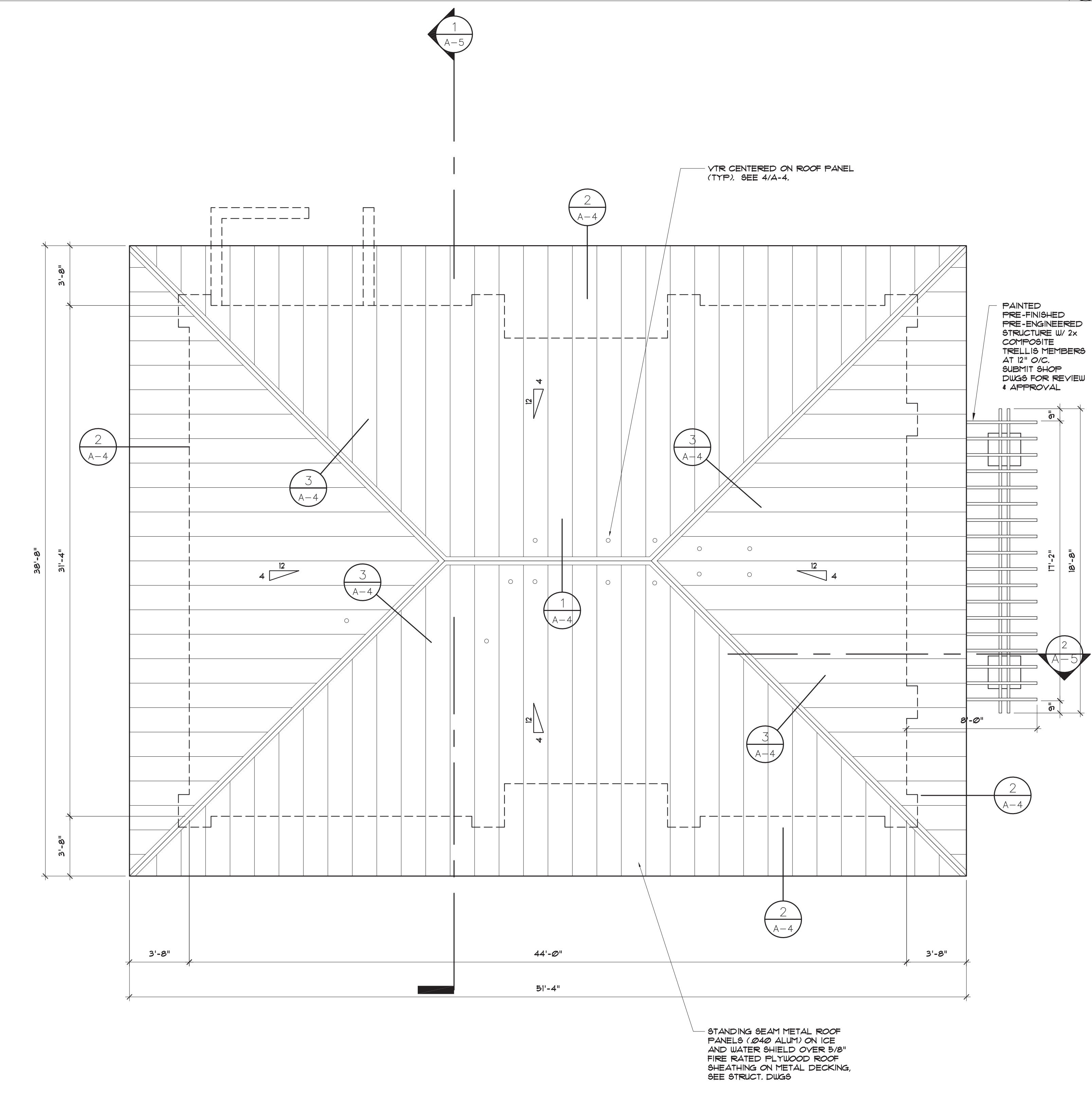


TEMPORARY PREFABRICATED MODULAR BUILDING (DIMENSIONS AS INDICATED) WITH RESTROOM FACILITIES. PROVIDE HOLDING TANK AND ANY MEP COMPONENTS AS REQUIRED. INCLUDE A PERMITTABLE PLAN BY A PROFESSIONAL ENGINEER, LICENSED IN THE STATE OF FLORIDA AND PRODUCT APPROVALS. G.C. SHALL VERIFY MODULAR BUILDING FLOOR PLAN REQUIREMENTS W/ P.B.C. PRIOR TO FABRICATION.



TRAILER LAYOUT

SCALE: 1/8"=1'-0"

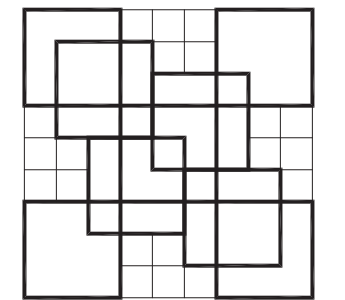


PLUMBING VENT FLASHING DETAIL

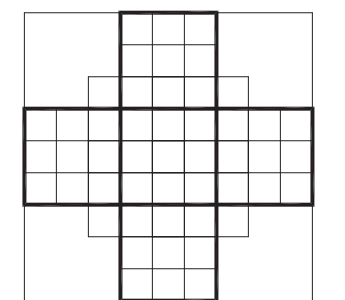
HIP CAP FLASHING DETAIL

ROOF PLAN

SCALE: 1/4"=1'-0"

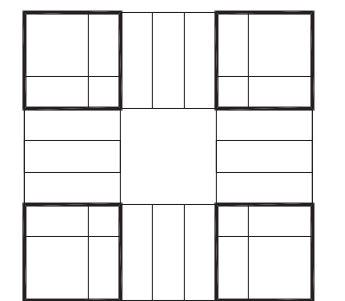


**COLOME & Associates, Inc.**  
AA 0003439  
530 24TH STREET  
WEST PALM BEACH  
FLORIDA 33407  
(561) 833-9147  
ARCHITECT: ELIZABETH A. COLOME  
REG. NUMBER: AR 004839



**P.B.C.**  
R.G. KREUSLER PARK  
RESTROOM BUILDING  
AND ENTRY DRIVE  
MODIFICATIONS  
PBC NO 14204  
2886 SOUTH OCEAN BLVD.

LAKE WORTH  
FLORIDA  
PROJECT NO.  
201402



SHEET TITLE:  
ROOF PLAN

REVISIONS:

DATE  
11/20/15  
DRAWN BY:  
DM  
CHECKED BY:  
EAC

SHEET NUMBER:

A-4