

- 1
- 2
- 3
- 4
- 5

Project Number
160412

1066 U.S. HIGHWAY 1
 NEW RETAIL BUILDING - GOODWILL
 1066 U.S. HIGHWAY 1
 VERO BEACH, FLORIDA

Project Name
NEW RETAIL BUILDING

STEPHEN BRASGALLA, ARCHITECT
 STATE OF FLORIDA
 REGISTRATION No. AR12239
 6991 WEST BROWARD BOULEVARD
 SUITE 100
 PLANTATION, FLORIDA 33317
 TELEPHONE 954.614.3801
 TELEFAX 954.208.0800
 ARCHITECT © DESIGN23.NET

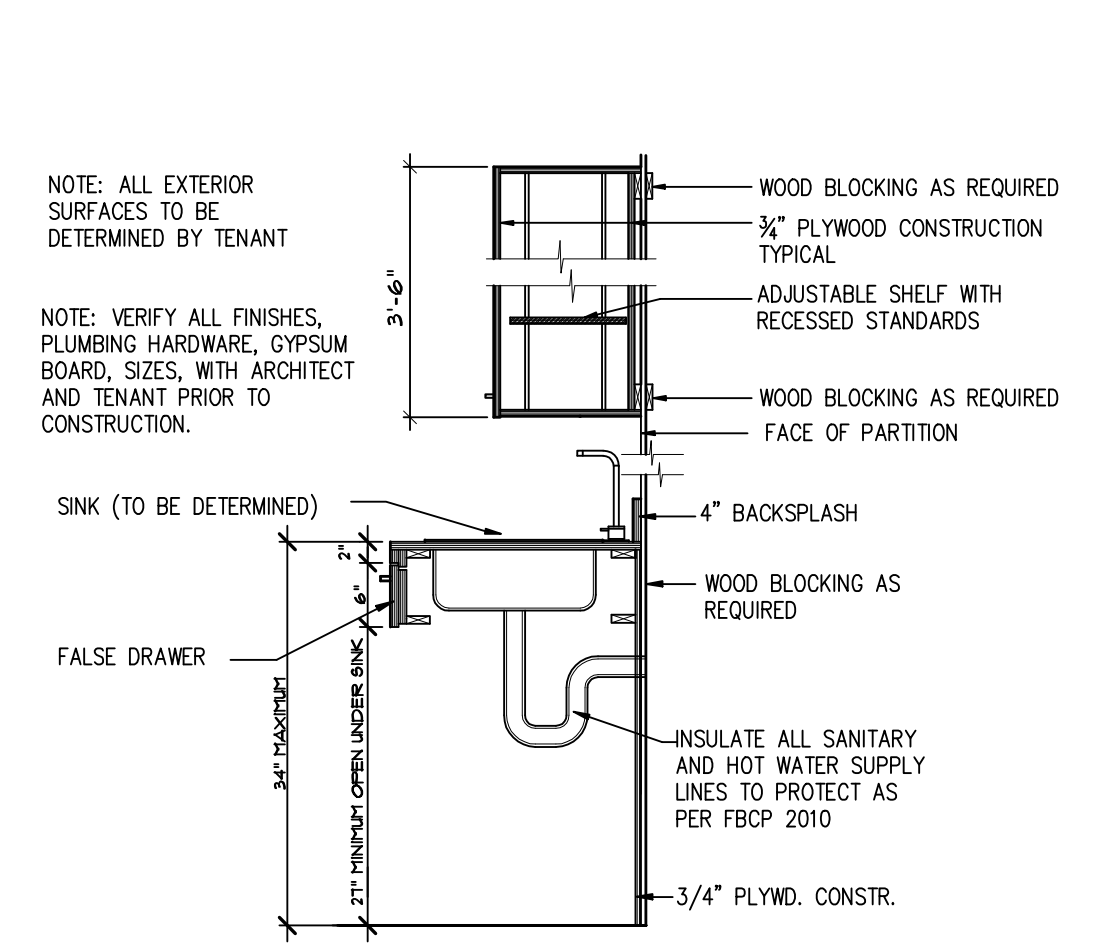
AS ISSUED FOR PERMIT 7-29-16
 (NOT FOR CONSTRUCTION)

Drawn By: RSS	Checked By: STB
Scale: SHOWN	Date: 7-29-16

Project Number
160412

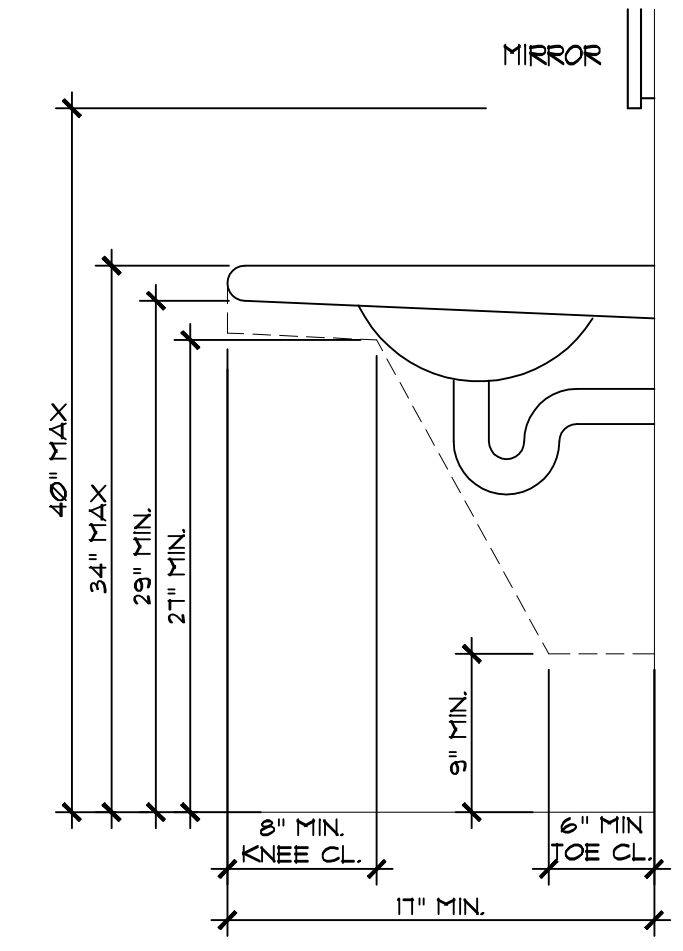
Sheet:

A - 6



ACCESSIBLE BREAK ROOM SINK DETAIL
 SCALE: NOT TO SCALE

5
A-6



ACCESSIBLE SINK DETAIL
 SCALE: NOT TO SCALE

3
A-6

LAVATORY CLEARANCE

GENERAL: THE FOLLOWING REQUIREMENTS SHALL APPLY TO LAVATORY FIXTURES, VANITY, AND BUILT IN LAVS.

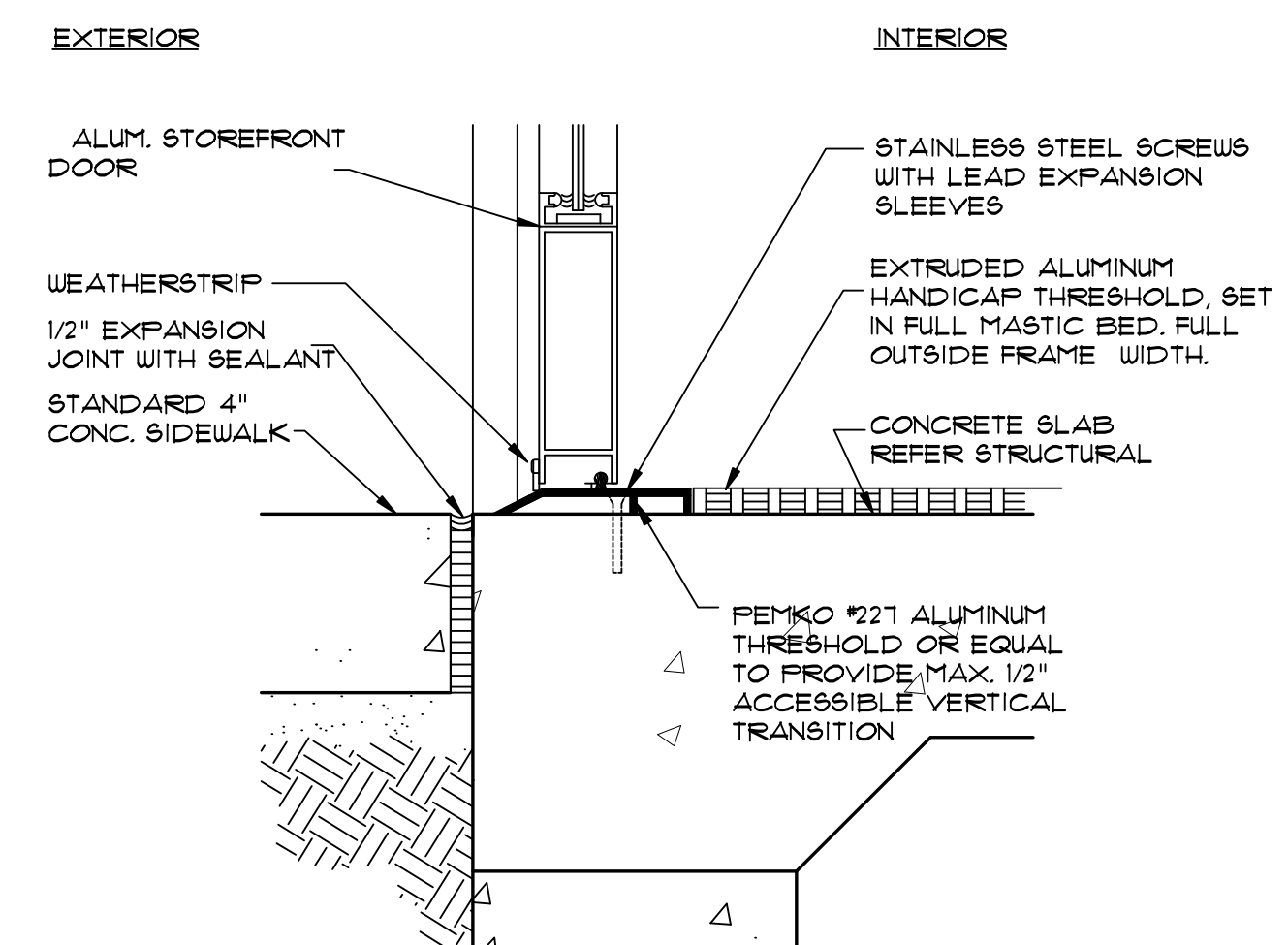
HEIGHT AND CLEARANCES: LAVS SHALL BE MOUNTED WITH THE RIM OR THE COUNTER SURFACE NO HIGHER THAN 34" AFF. PROVIDE A CLEARANCE OF AT LEAST 29" AFF. TO THE BOTTOM OF THE APRON.

CLEAR FLOOR SPACE: A CLEAR FLOOR SPACE 30" X 48" IN FRONT OF A LAV TO ALLOW FORWARD APPROACH. SUCH CLEAR FLOOR SPACE SHALL ADJOIN OR OVERLAP AN ACCESSIBLE ROUTE AND SHALL EXTEND A MAX. OF 19" UNDERNEATH THE LAV.

EXPOSED PIPES AND SURFACES: HOT WATER AND DRAIN PIPES UNDER LAVS SHALL BE INSULATED OR OTHERWISE CONFIGURED TO PROTECT AGAINST CONTACT THERE SHALL BE NO SHARP OR ABRASIVE SURFACES UNDER LAVATORIES.

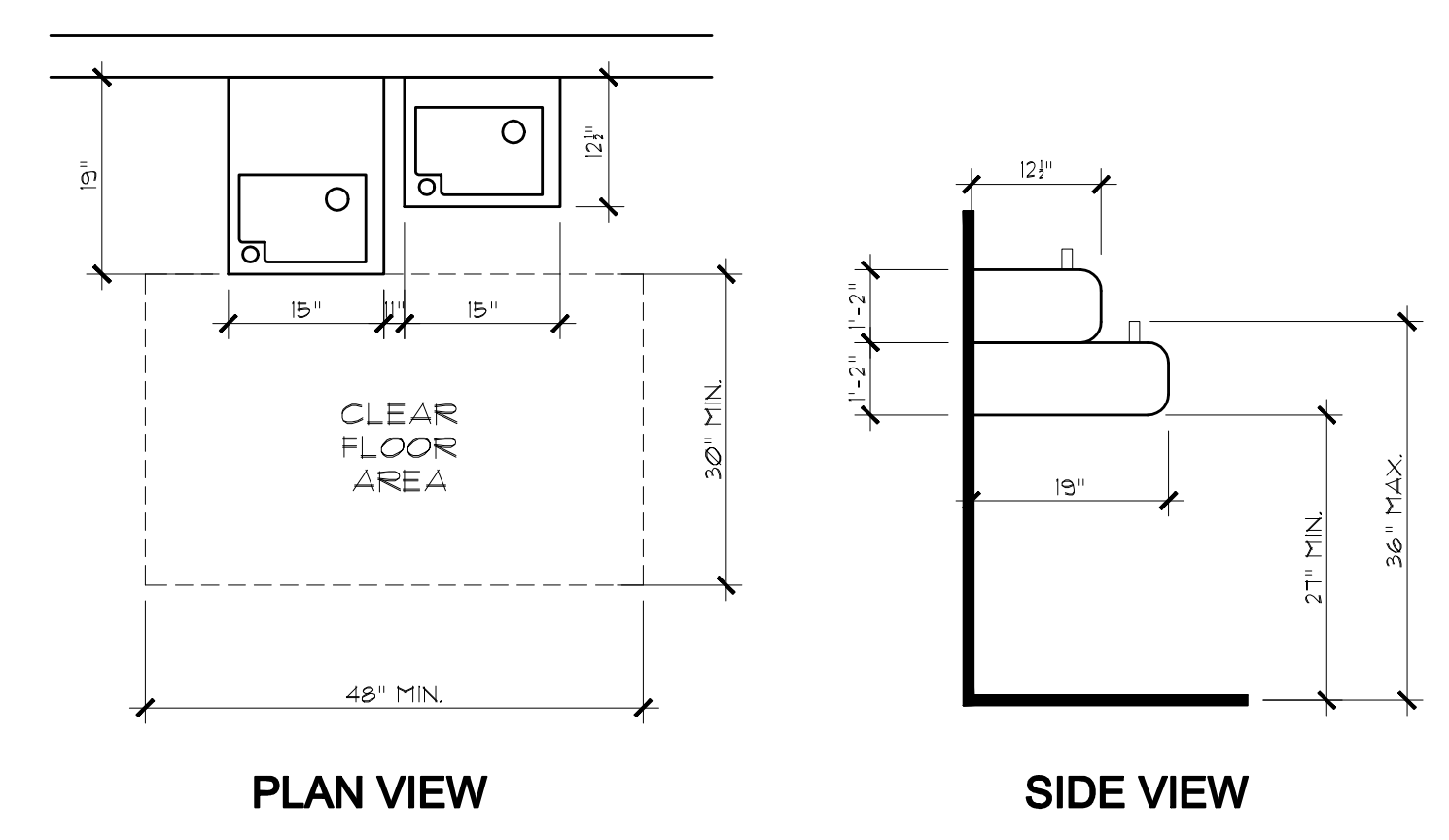
FAUCETS: FAUCETS SHALL COMPLY WITH FAC 4214. LEVER-OPERATED, PUSH-TYPE, AND ELECTRONICALLY CONTROLLED MECHANISMS ARE EXAMPLES OF ACCEPTABLE DESIGNS. IF SELF-CLOSING VALVES ARE USED THE FAUCET SHALL REMAIN OPEN FOR AT LEAST 10 SECONDS.

MIRRORS: MIRRORS SHALL BE MOUNTED WITH THE BOTTOM EDGE OF THE REFLECTING SURFACE NO HIGHER THAN 40" AFF.



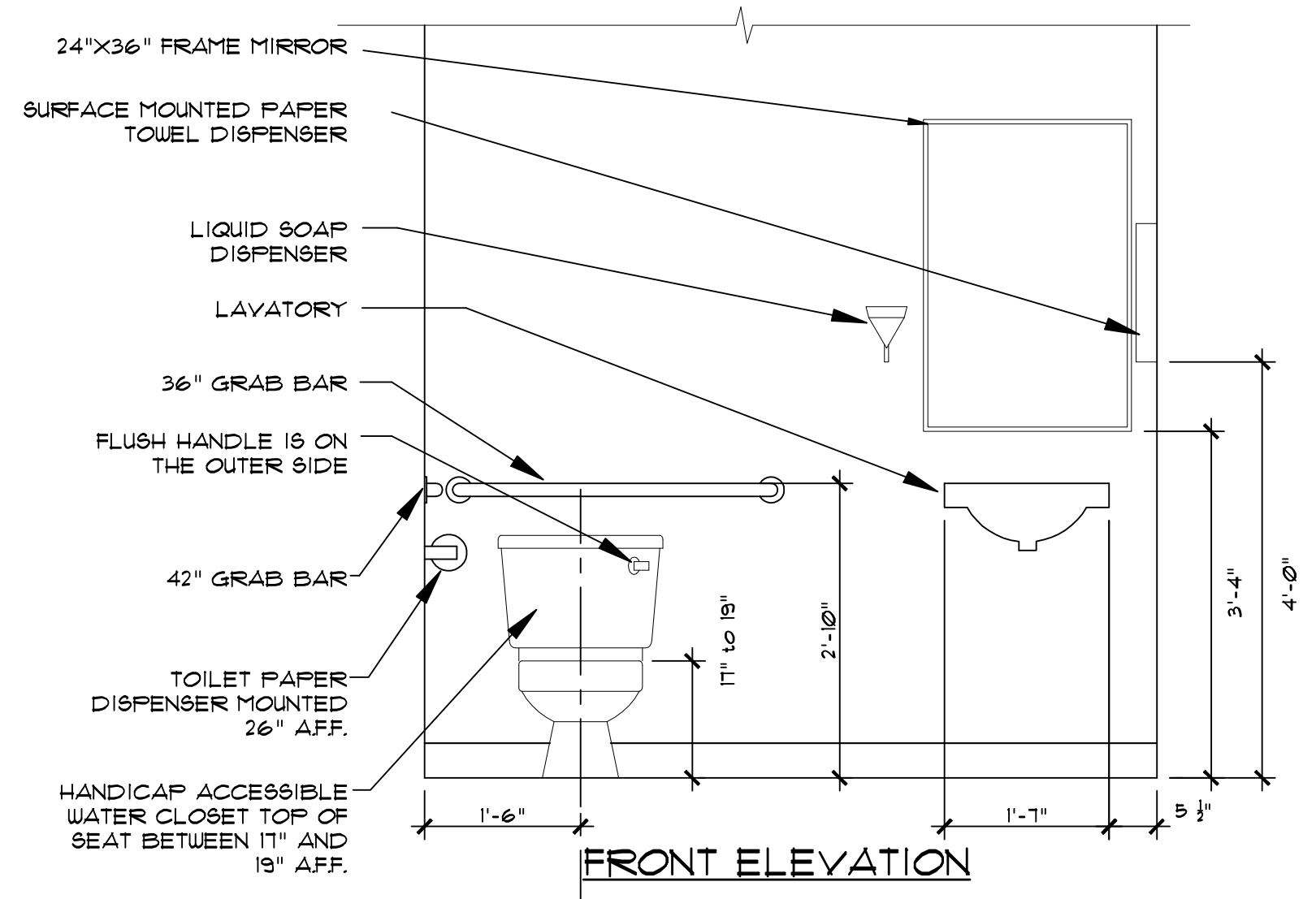
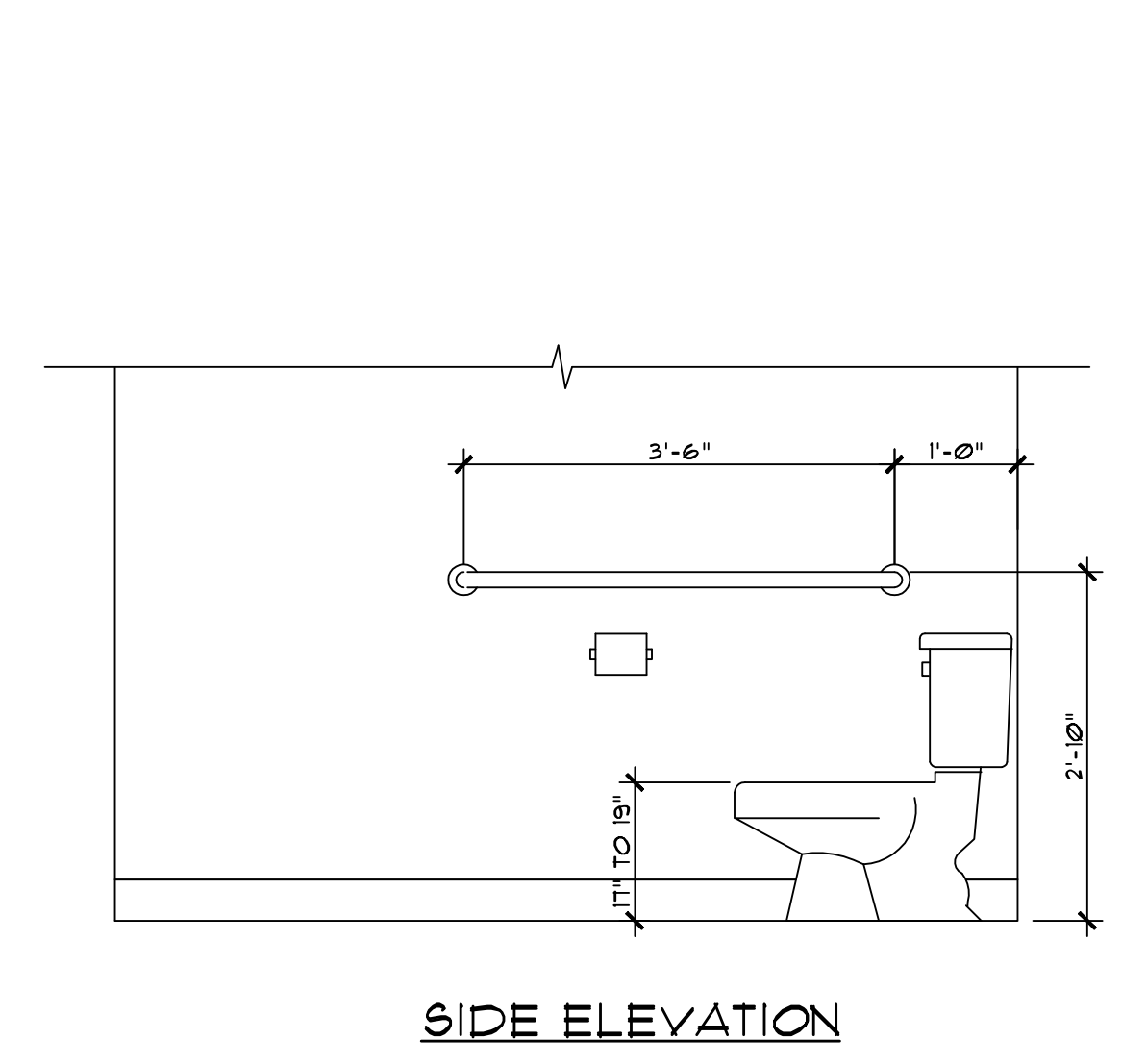
ACCESSIBLE THRESHOLD
 SCALE: NOT TO SCALE

4
A-6



WATER FOUNTAIN DETAILS
 SCALE: NOT TO SCALE

2
A-6



ACCESSIBLE RESTROOM
 SCALE: NOT TO SCALE

1
A-6