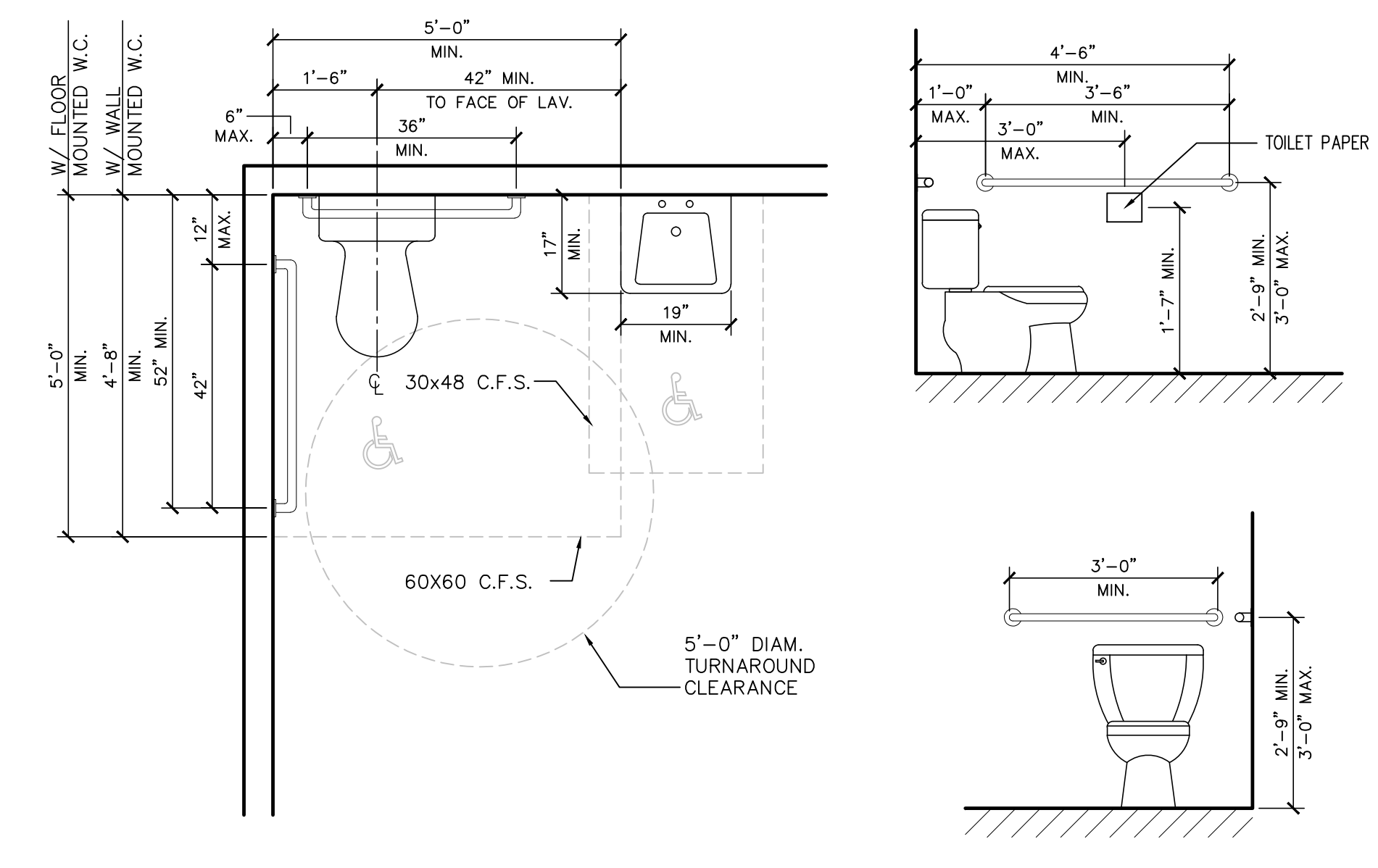


NOTE: A BOTTLED WATER MACHINE WITH SERVICE CONTRACT MAY BE SUBSTITUTED FOR A REQUIRED DRINKING FOUNTAIN PROVIDED THE DISPENSER IS LESS THAN 48" A.F.F.



- DISABLED ACCESS NOTES**
- IN BUILDINGS AND FACILITIES, FLOORS OF A GIVEN STORY SHALL BE A COMMON LEVEL THROUGHOUT, OR SHALL BE CONNECTED BY PEDESTRIAN RAMPS, PASSENGER ELEVATORS OR SPECIAL ACCESS LIFTS.
 - FLOOR SURFACES SHALL BE SLIP-RESISTANT.
 - EVERY CORRIDOR AND AISLE SERVING AN OCCUPANT LOAD OF 10 OR MORE SHALL BE NOT LESS THAN 44" IN WIDTH.
 - ABRUPT CHANGES IN LEVEL ALONG ANY ACCESSIBLE ROUTE SHALL NOT EXCEED 1/2" IN HEIGHT. LEVEL CHANGES NOT EXCEEDING 1/4" MAY BE VERTICAL. BEVEL OTHERS WITH A SLOPE NO GREATER THAN 1:2
 - LATCHING AND LOCKING DOORS THAT ARE HAND ACTIVATED AND WHICH ARE IN A PATH OF TRAVEL SHALL BE OPERABLE WITH A SINGLE EFFORT BY LEVER TYPE HARDWARE, PANIC BARS, PUSH-PULL ACTIVATING BARS, OR OTHER HARDWARE DESIGNED TO PROVIDE PASSAGE WITHOUT REQUIRING THE ABILITY TO GRASP THE OPENING HARDWARE. MOUNT DOOR OPENING HARDWARE BETWEEN 30" AND 44" ABOVE FLOOR FINISH.
 - CENTER HAND ACTIVATED DOOR OPENING HARDWARE BETWEEN 30" AND 44" ABOVE THE FLOOR.
 - MAXIMUM PULL OR PUSH EFFORT TO OPERATE DOORS SHALL NOT EXCEED 8.5 POUNDS FOR EXTERIOR DOORS AND 5 POUNDS FOR INTERIOR DOORS, MEASURED AT RIGHT ANGLES TO HINGED DOORS AND AT CENTER PLANE OF SLIDING OR FOLDING DOORS. CORRESPONDING DEVICES OR AUTOMATIC DOOR OPERATORS MAY BE UTILIZED TO MEET THE ABOVE STANDARDS. MAXIMUM EFFORT TO OPERATE REQUIRED FIRE DOORS MAY BE INCREASED NOT TO EXCEED 15 POUNDS.
 - THE BOTTOM 10" OF ALL DOORS (EXCEPT SLIDING AND AUTOMATIC) SHALL HAVE A SMOOTH UNINTERRUPTED SURFACE TO ALLOW THE DOOR TO BE OPENED BY A WHEELCHAIR FOOTREST WITHOUT CREATING A TRAP OR HAZARDOUS CONDITION. PROVIDE A 10" HIGH SMOOTH PANEL ON THE PUSH SIDE OF NARROW FRAME DOORS.
 - EVERY REQUIRED ENTRANCE OR PASSAGE DOORWAY SHALL BE NOT LESS THAN 3' IN WIDTH AND NOT LESS THAN 6'-8" IN HEIGHT. DOORS SHALL BE CAPABLE OF OPENING AT LEAST 90 DEGREES AND SHALL BE SO MOUNTED THAT THE CLEAR WIDTH OF THE DOORWAY IS NOT LESS THAN 32".
 - WHERE A PAIR OF DOORS IS UTILIZED, AT LEAST ONE OF THE DOORS SHALL PROVIDE A CLEAR, UNOBSTRUCTED OPENING WIDTH OF 32" WITH THE LEAF POSITIONED AT AN ANGLE OF 90 DEGREES FROM ITS CLOSED POSITION.
 - IDENTIFY ACCESSIBLE ENTRANCES WITH AT LEAST ONE STANDARD SIGN AND WITH ADDITIONAL DIRECTIONAL SIGNS, AS REQUIRED, VISIBLE FROM APPROACHING PEDESTRIAN WAYS.
 - THE FLOOR OR LANDING ON EACH SIDE OF AN ENTRANCE OR PASSAGE DOOR SHALL BE LEVEL AND CLEAR. THE LEVEL AND CLEAR AREA SHALL HAVE A LENGTH IN THE DIRECTION OF DOOR SWING OF AT LEAST 60" AND THE LENGTH OPPOSITE THE DIRECTION OF DOOR SWING OF 44" AS MEASURED AT RIGHT ANGLES TO THE PLANE OF THE DOOR IN ITS CLOSED POSITION.
 - FLOORS OR LANDINGS SHALL BE NOT MORE THAN 1/2" LOWER THAN THE THRESHOLD OF THE DOORWAY. CHANGE IN LEVEL BETWEEN 1/4" AND 1/2" SHALL BE BEVELED WITH A SLOPE NO GREATER THAN 1:2.
 - TO ALERT THE VISUALLY IMPAIRED, MARK THE UPPER APPROACH AND THE LOWER TREAD OF EACH INTERIOR STAIR WITH A STRIP OF CLEARLY CONTRASTING COLOR AT LEAST 2" WIDE, PLACED PARALLEL TO AND NOT MORE THAN 1" FROM THE NOSE OF THE STEP OR LANDING. THE STRIP SHALL BE OF A MATERIAL THAT IS AT LEAST AS SLIP RESISTANT AS THE OTHER TREADS OF THE STAIR.
 - ENTRY TO SANITARY FACILITIES:
 - 44" CLEAR AISLES OR CORRIDORS WHERE OCCUPANT LOAD IS 10 OR MORE.
 - DOORWAYS TO HAVE A 32" CLEAR OPENING.
 - ON APPROACH SIDE, PROVIDE A 60" CLEAR LEVEL SPACE WHEN DOOR SWINGS TOWARD APPROACH AND 44" SPACE WHEN DOOR SWINGS AWAY FROM APPROACH.
 - MOUNT FLUSH VALVE CONTROL NO MORE THAN 44" ABOVE THE FLOOR, ON THE SIDE OF THE TOILET WITH THE GREATEST SEPARATION FROM ADJACENT WALL OR OTHER SURFACE.
 - PROVIDE GRAB BARS ON EACH SIDE, OR ONE SIDE AND BACK OF WATER CLOSET.
 - GRAB BARS TO BE 33" ABOVE AND PARALLEL TO THE FLOOR.
 - SIDE BARS TO BE 42" LONG AND PROJECT 24" IN FRONT OF WATER CLOSET STOOL. GRAB BAR AT BACK TO BE 36" LONG.
 - DIAMETER OF GRAB BARS TO BE 1-1/4" TO 1-1/2".
 - PROVIDE 1-1/2" CLEARANCE BETWEEN GRAB BARS AND WALL.
 - GRAB BARS (INCLUDING CONNECTORS, FASTENERS, SUPPORT BACKING, ETC.) SHALL SUPPORT A 250 POUND LOAD.
 - GRAB BARS SHALL NOT ROTATE WITHIN THEIR FITTINGS.
 - GRAB BARS AND ANY ADJACENT SURFACE SHALL BE FREE OF SHARP OR ABRASIVE ELEMENTS.
 - EDGES SHALL HAVE A MINIMUM RADIUS OF 1/8".
 - PROVIDE A CLEAR FLOOR SPACE 30"x48" IN FRONT OF LAVATORY TO PERMIT A FORWARD APPROACH.
 - MOUNT LAVATORIES WITH A MINIMUM CLEARANCE OF 29" FROM THE FLOOR TO THE BOTTOM OF THE APRON. PROVIDE KNEE CLEARANCE UNDER THE FRONT LIP EXTENDING A MINIMUM OF 30" IN WIDTH WITH 8" MINIMUM WIDTH, AND SHALL BE A MINIMUM OF 9" HIGH FROM THE FLOOR AND A MINIMUM OF 17" DEEP FROM THE FRONT OF THE LAVATORY.
 - FAUCET CONTROLS AND OPERATING MECHANISMS SHALL BE OPERABLE WITH ONE HAND AND SHALL NOT REQUIRE TIGHT GRASPING, PINCHING OR TWISTING OF THE WRIST. THE FORCE REQUIRED TO ACTIVATE CONTROLS SHALL BE NO GREATER THAN 5 POUNDS. LEVER OPERATED, PUSH TYPE AND ELECTRONICALLY CONTROLLED MECHANISMS ARE EXAMPLES OF ACCEPTABLE DESIGNS. SELF CLOSING ARE ALLOWED IF THE FAUCET REMAINS OPEN FOR AT LEAST 10 SECONDS.
 - INSULATE OR OTHERWISE COVER HOT WATER AND DRAIN PIPES UNDER LAVATORIES.
 - THERE SHALL BE NO SHARP OR ABRASIVE SURFACES UNDER LAVATORIES.

REVISIONS	BY

Slattery & Associates
ARCHITECTS PLANNERS
2060 NW BOCA RATON BLVD.
SUITE 2
BOCA RATON, FL 33431
TEL: 561-392-3848
FAX: 561-392-5402
WWW.SLATTERYARCHITECTS.COM

**WOODFIELD HUNT CLUB
CLUBHOUSE RENOVATION
AND EXPANSION**
4420 WOODFIELD BLVD.
BOCA RATON, FLORIDA

SLATTERY & ASSOCIATES
FLORIDA REGISTRATION # AA000381

ADA COMPLIANCE INFORMATION

DRAWN	CR, DR
CHECKED	CR
DATE	7-21-16
SCALE	AS NOTED
JOB NO.	2014-33
SHEET	A002

C.D. - 7-21-16