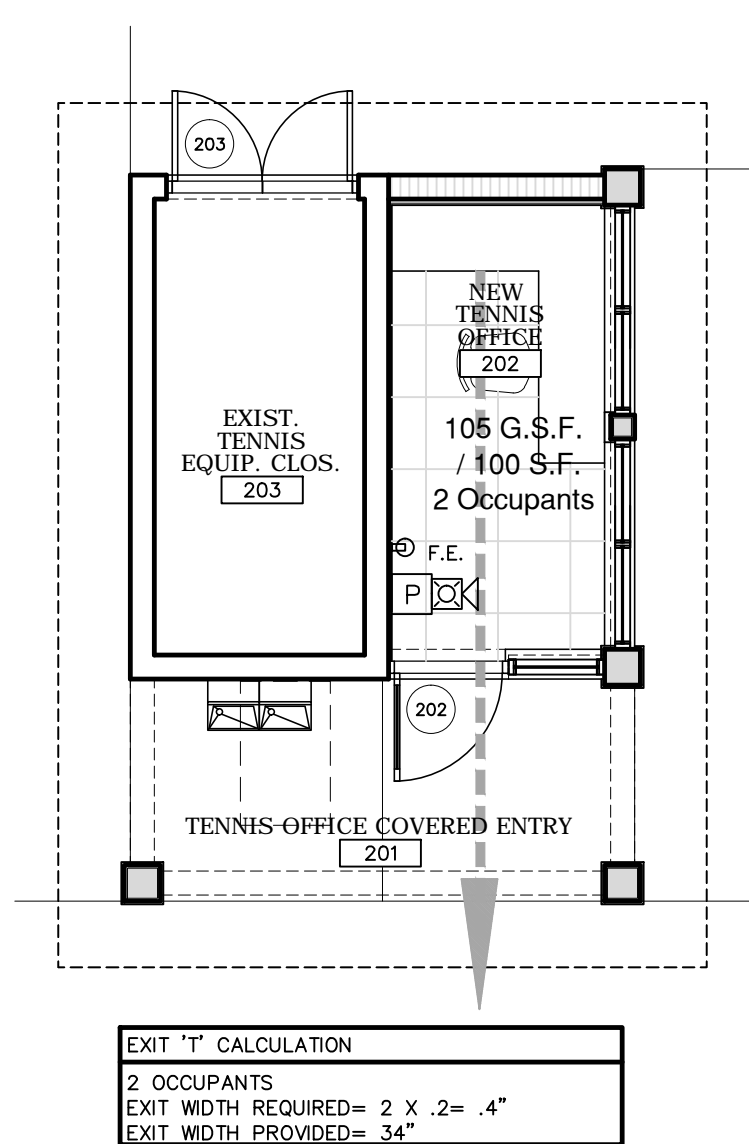
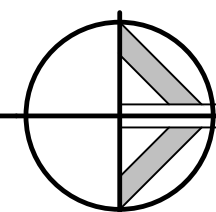


FLOOR PLAN

TENNIS BUILDING

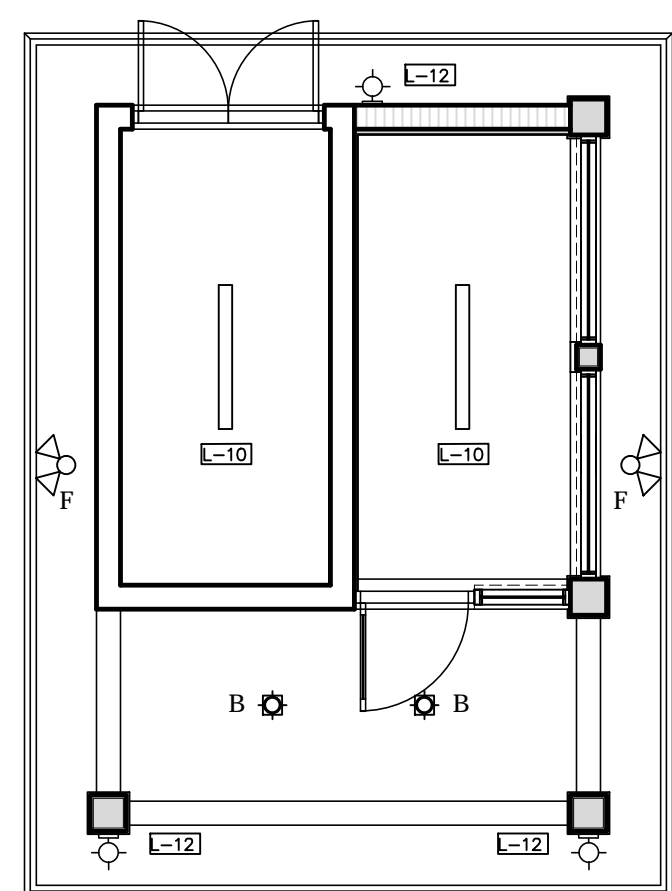
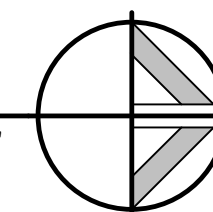
SCALE: 3/16" = 1'-0"



LIFE SAFETY PLAN

TENNIS BUILDING

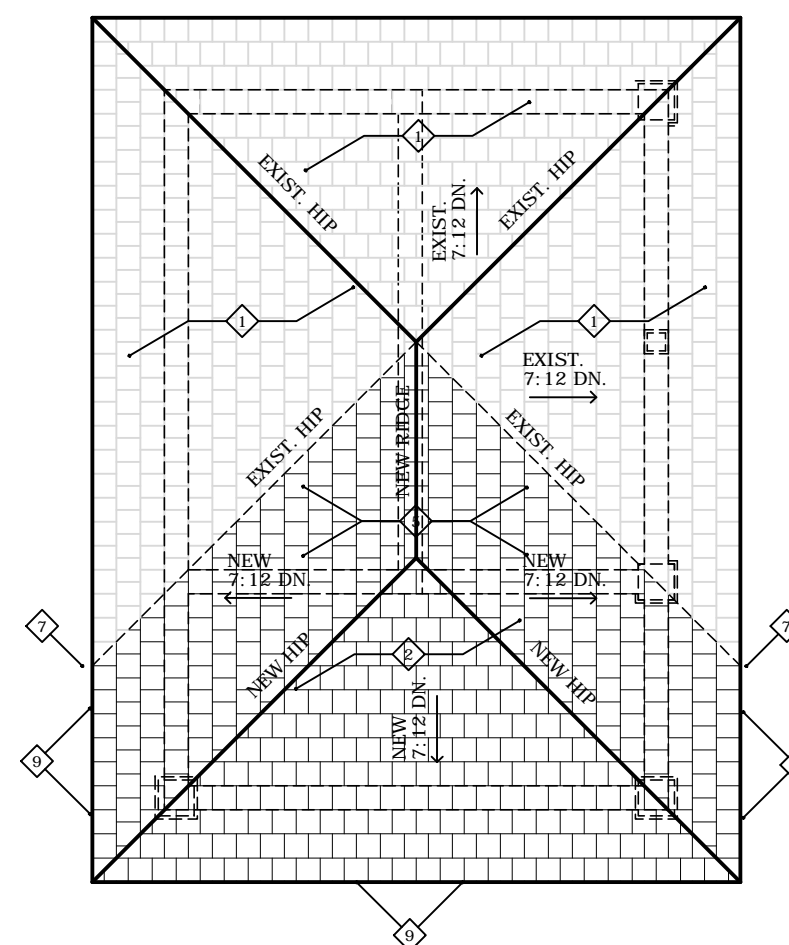
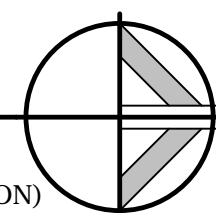
SCALE: 3/16" = 1'-0"



REFLECTED CEILING PLAN

TENNIS BUILDING

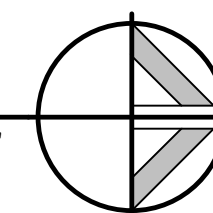
SCALE: 3/16" = 1'-0"



ROOF PLAN

TENNIS BUILDING

SCALE: 3/16" = 1'-0"



DOOR SCHEDULE (SEE SHT. A901 FOR ADDITIONAL DOOR DETAILS & INFORMATION)														
MARK	DOOR			SIZE			FRAME		DETAILS			LABEL	REMARKS	HDWR SET
	ROOM	MATERIAL	TYPE	WIDTH	HEIGHT	THICKNESS	MATERIAL	TYPE	HEAD	JAMB	THRESHOLD			
202	TENNIS OFFICE	ALUM./LGL.	C	3'-0"	6'-8"	1 3/4"	ALUM.	C	7/A901	7/A901	5/A901	N/A	-	-
203	TENNIS EQUIP. CLOS.	IHM	G	(2) 3'-0"	6'-8"	1 3/4"	HM	F	6/A901	6/A901	5/A901	N/A	-	-

- #### PLAN LEGEND
- 1 LINES (DASHED) OF ROOF OVERHANG ABOVE, TYP.
 - 2 LINES (DASHED) OF EXTERIOR SOFFIT, EYEBROW OR BEAM ABOVE, TYP.
 - 3 FIRE ALARM SYSTEM MANUAL PULL-STATION, TYP. (SEE 'FA' DWGS.)
 - 4 VENEER STONE TO MATCH EXISTING VENEER STONE ON BUILDING, TYP.
 - 5 BUILT-IN CASEWORK TO BE PROVIDED BY G.C. & CABINETRY SUB-CONTRACTOR / VENDOR COORDINATED W/ OWNER, VENDOR TO PROVIDE DETAIL, SHOP DWGS. FOR OWNER APPROVAL PRIOR TO ANY ORDERS OR FABICATIONS, TYP. (SEE I.D. DWGS.)
 - 6 TABLES, CHAIRS & OTHER FURNISHINGS, (SEE I.D. DWGS.)
 - 7 PORTABLE FIRE EXTINGUISHER IN EITHER A SEMI-RECESSED CABINET OR W/ WALL-MOUNTED HOOK, TYP. (SEE A251 & A252), TYP.
 - 8 WALL-MOUNTED WIDE SCREEN T.V. W/ POWER & CABLE / DATA CONNECTION, TYP. (SEE 'ID & 'E' DWGS.), TYP. (G.C. CONFIRM & COORDINATE MOUNTING HEIGHT WITH I.D. PRIOR TO ELECT. ROUGH-IN SO OUTLETS ARE CONCEALED BEHIND THE SCREEN, PROVIDE SOLID PLYWD. BACKING BTWN. STUDS, TYP.)
 - 9 ATTIC ACCESS PANEL @ CLG. TYP.
 - 10 H.V.A.C. CONDENSING UNIT ATTACHED TO CONC. PAD, TYP. (SEE MEP DWGS.)
 - 11 H.V.A.C. AIR-HANDLING UNIT, TYP. (SEE MEP DWGS.)
 - 12 RESIDENTIAL TYPE REFRIGERATOR - FREEZER W/ ICE MAKER, TYP. (SEE 'E' & 'P' DWGS.)
 - 13 ELECTRIC WATER-HEATER UNIT, TYP. (SEE 'E' & 'P' DWGS.)
 - 14 24" X 24" FLOOR-MOUNT MOP SINK, (SEE 'P' DWGS.)
 - 15 STACK OVEN & MICROWAVE UNIT (SEE I.D. DWGS.)
 - 16 34" H. X 24 D. P. LAM. ON PLYWD. BASE CABINET W/ SOLID SURFACE COUNTER & SPLASH, TYP. (SEE I.D. DWGS.)
 - 17 14" D. X 30" H. P. LAM. ON PLYWD. UPPER CABINETS, TYP. (SEE INTERIOR ELEVATION)
 - 18 18" D. X 42" H. SOLID SURFACE COUNTER (OPEN BELOW) ON PLYWD. & WELDED TUBE-STL. FRAME ATT. TO WALL, TYP.
 - 19 SOLID PANEL TOILET PARTITION SYSTEM, (SEE I.D. DWGS.)
 - 20 STAINLESS STL. UNDER-COUNTER MOUNT SINGLE-BOWL SINK W/ ELECTRIC WASTE DISPOSER UNIT, TYP. (SEE 'E' & 'P' DWGS.)
 - 21 WALL-MOUNT ADULT BARRIER-FREE LAV., TYP. (SEE 'P' DWGS.)
 - 22 FLOOR-MOUNT ADULT BARRIER-FREE WATER-CLOSET, TYP. (SEE 'P' DWGS.)
 - 23 UNDER-COUNTER MOUNTED LAVS.
 - 24 FLOOR-MOUNT STD. HEIGHT WATER-CLOSET, TYP. (SEE 'P' DWGS.)
 - 25 WALL MOUNT URINALS
 - 26 EXISTING ELECTRICAL SERVICE LOCATION, METER & MAIN DISCONNECT SWITCH, TYP. (SEE 'E' DWGS.)
 - 27 EXERCISE EQUIPMENT (SEE GYM EQUIPMENT VENDOR'S DWGS.)
 - 28 ELECTRICAL PANEL, TYP. (SEE 'E' DWGS.)
 - 29 WALL-MOUNT HI-LOW TANDEM WATER COOLERS

- #### ROOF PLAN LEGEND
- 1 EXISTING FLAT CEMENT TILE ROOF SYST. (LIGHT BROWN COLOR) TO REMAIN, TYP.
 - 2 NEW FLAT CEMENT TILE ROOF SYST (COLOR & STYLE TO MATCH EXISTING & BE APPROVED BY THE ARCHITECT) SCREW & CLIP FASTENED OVER 90 LB. ROOFING UNDERLAYMENT HOT-MOPPED OVER 30 LB. BITUMINOUS FELT TIN-NAILED TO 3/4" FIRE-RETARDANT PLYWOOD SHEATHING SCREW FASTENED PER N.O.A. & MFRS. PUBLISHED INSTRUCTIONS TO PRE-ENGINEERED, PRE-FAB. WOOD TRUSS SYST. ATTACHED TO STRUCTURE, (SEE 'S' DWGS.)
 - 3 3-PLY MODIFIED BITUMINOUS ROOFING SYST. OF GRANULAR IMPREGNATED CAP SHEET HOT-MOPPED OVER MODIFIED BITUMEN INTER-PLY MEMBRANE HOT-MOPPED OVER 30 LB. NAIL-ABLE BASE SHEET MECHANICALLY FASTENED TO 3/4" FIRE-RETARDANT PLYWD. SHEATHING SLOPED @ 1/2" PER FT. SCREW FASTENED PER N.O.A. & MFRS. PUBLISHED INSTRUCTIONS TO PRE-ENGINEERED, PRE-FAB. WOOD TRUSS SYST. ATTACHED TO STRUCTURE, TYP. (SEE 'S' DWGS.)
 - 4 CRICKET OF TYP. 3-PLY MODIFIED BITUMINOUS ROOF SYST., TYP.
 - 5 AREA OF PORTION OF THE EXISTING TILE ROOF & SHEATHING BEING REMOVED ONLY AS NEEDED FOR INSTALLATION OF NEW BLENDED ROOF SYSTEMS, SUPPORT STRUCTURE, WATERPROOF SEALED FLASHING, ETC., TYP.
 - 6 PROVIDE CONT. TWO PIECE ALUM. FLASHING & COUNTER-FLASHING @ WALL TERMINATION OF NEW LOW-SLOPED ROOF SYST. SCREW FASTENED PER N.O.A. & MFRS. PUBLISHED INSTRUCTIONS TO SHEATHING, TYP.
 - 7 PROVIDE WATER-PROOF DETAIL BLENDING NEW FASCIA TO THE EXISTING FASCIA (NOTIFY THE ARCHITECT OF THE INTENDED ROOF / FASCIA BLENDING DETAIL FOR FIELD REVIEW PRIOR TO INSTALLATION), TYP.
 - 8 PROVIDE CONT. BREAK-METAL ALUM. FLASHING @ INTERSECTION OF NEW LOW-SLOPED ROOF SYST. WITH THE EXISTING (OR NEW) PITCHED CEMENT TILE ROOF SYST. & AT ALL NEW VALLEYS, SCREW FASTENED & WATERPROOF SEALED PER N.O.A. & MFRS. PUBLISHED INSTRUCTIONS TO SHEATHING, TYP.
 - 9 PROVIDE CONT. ALUM. DRIP-EDGE FLASHING @ FASCIA / EDGE OF ALL NEW LOW-SLOPED 3-PLY MODIFIED BITUMINOUS OR NEW PITCHED CEMENT TILE ROOF SYSTEMS, SCREW FASTENED & WATERPROOF SEALED PER N.O.A. & MFRS. PUBLISHED INSTRUCTIONS TO SHEATHING, TYP.

- #### ROOF PLAN NOTES
- 1 G.C. & ROOFING CONTRACTOR TO PROVIDE ALL MATERIALS & LABOR NECESSARY TO BLEND THE NEW ROOF SURFACES, FASCIAS & SOFFITS TO BE COMPLETELY WATERPROOF SEALED & IN AN AESTHETIC MANNER ACCEPTABLE TO THE ARCHITECT, TYP.
 - 2 G.C. & ROOFING CONTRACTOR TO PROVIDE THE OWNER WITH COMPLETE MANUFACTURER & VENDOR DOCUMENTATION FOR A 20-YEAR WARRANTY FOR BOTH THE 3-PLY MODIFIED BITUMINOUS & CEMENT TILE ROOF SYSTEMS, TYP.

REVISIONS	BY

Slattery & Associates
ARCHITECTS PLANNERS
 2060 NW BOCA RATON BLVD.
 SUITE 2
 BOCA RATON, FL 33431
 TEL: 561-392-3848
 FAX: 561-392-5402
 WWW.SLATTERYARCHITECTS.COM

**WOODFIELD HUNT CLUB
 CLUBHOUSE RENOVATION
 AND EXPANSION**
 4420 WOODFIELD BLVD.
 BOCA RATON, FLORIDA

SLATTERY & ASSOCIATES
 FLORIDA REGISTRATION # AA000381

DATE OF SEAL: 7-27-16

DRAWN	CR, DR
CHECKED	CR
DATE	7-21-16
SCALE	AS NOTED
JOB NO.	2014-33
SHEET	A204

TENNIS BUILDING PLANS

C.D. - 7-21-16