

MILLWORK SPECIFICATIONS:

- 1 CABINET HARDWARE AND ACCESSORIES:**
- 4" WIRE PULLS
 - 4" FLUSH PULLS; MILL FINISH- LOCATED IN PLASMA PROCESSING AND SHIPPING ONLY.
 - CONCEALED DOOR HINGES; 125 DEGREE OPEN
 - FULL EXTENSION DRAWER SLIDES; 100 LB. RATED (500 LB. RATED AT PRINTER CABINETS)
 - METAL SHELF ADJUSTMENT PINS WITH SCREW FASTEN EYE
 - DOOR SILENCERS; TWO PER DOOR
 - DRAWER CAM LOCKS AS SHOWN ON SECTION/ ELEVATION
 - 3" COUNTER TOP GROMMET FOR CORD DROPS- GROMMETS ARE TO BE PROVIDED IN ALL COUNTERTOPS PER IMMUNOTEK SPECIFICATIONS. NUMBER AND LOCATION TO BE DETERMINED UPON BUILDING OCCUPANCY, VERIFY WITH TENANT. ALL GROMMETS TO BE CENTERED WITH RECEPTACLES.

- 2 RECEPTACLES WITH WIRING WILL BE RUN INSIDE MOST OF THE CABINETY; COORDINATE WITH ELECTRICAL CONTRACTOR.**

- 3 TYPICAL CABINET CONSTRUCTION:**
***EXCEPTION- ALL WOOD CONSTRUCTION AT PRINTER CABINET BOX/ DRAWERS; REFER TO SECTIONS FOR DETAILS.**

- DOOR FRONTS: PLASTIC LAMINATE ON EXTERIOR/ GREY CABINET LINER ON OPP. SIDE OF 3/4" INDUSTRIAL GRADE MDF
- DRAWER FRONTS: PLASTIC LAMINATE ON EXTERIOR/ GREY CABINET LINER ON OPP. SIDE OF 3/4" INDUSTRIAL GRADE MDF
- SEMI-EXPOSED AREAS: MELAMINE CLAD INDUSTRIAL GRADE MDF 3/4" (GREY)
- SHELVES: MELAMINE CLAD INDUSTRIAL GRADE MDF 3/4" (GREY)
- BACKS: MELAMINE CLAD INDUSTRIAL GRADE MDF 1/4" (GREY)
- DRAWER SIDES: MELAMINE ON 1/2" INDUSTRIAL GRADE MDF (GREY)
- DRAWER BOTTOMS: MELAMINE ON 1/4" INDUSTRIAL GRADE MDF (GREY)
- EDGING: PVC TAPE EDGING MATCHING PLAM COLOR
- TOEKICK: SOLID WOOD BLOCKING

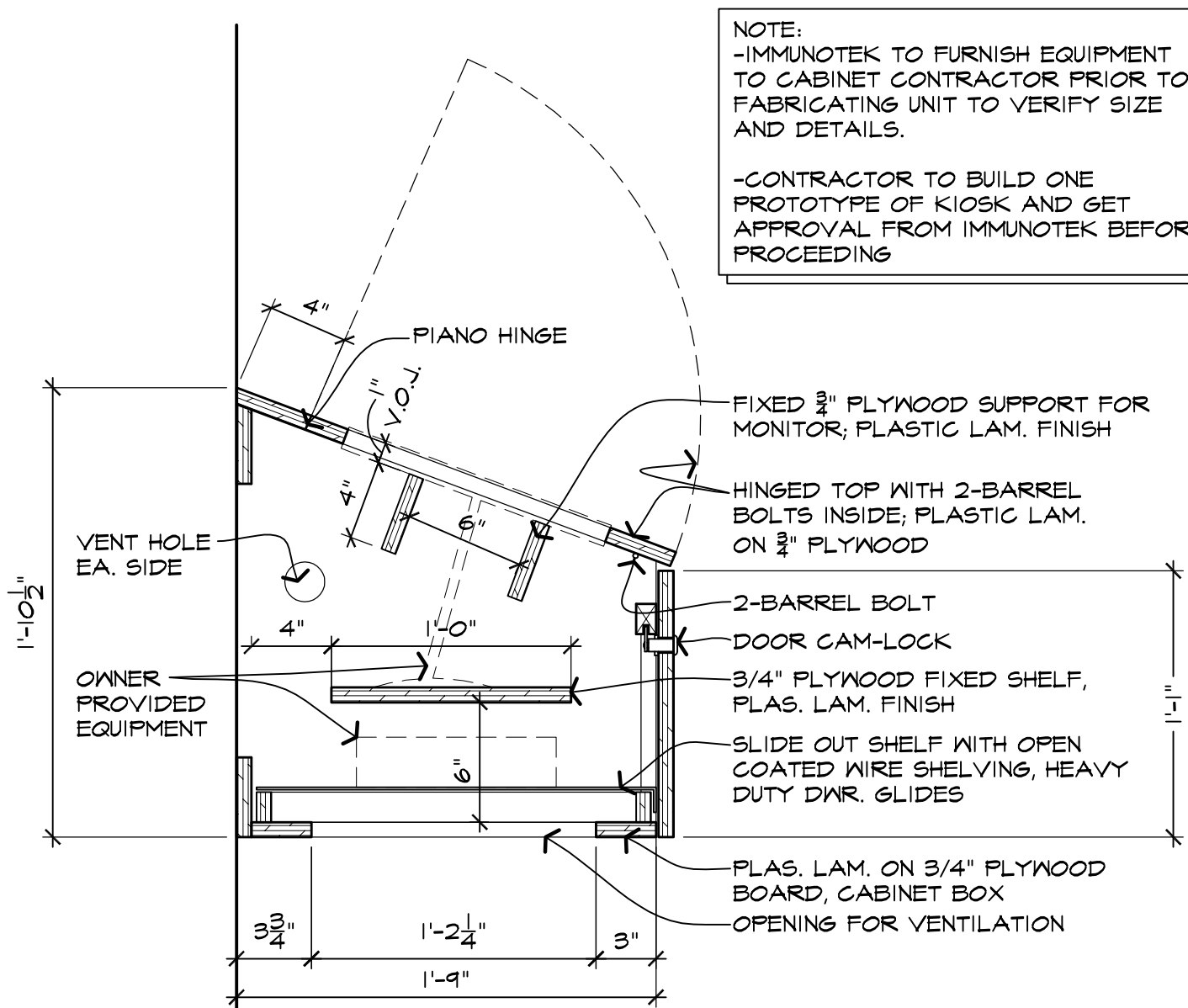
4 CABINET FINISHES GRAPHIC KEY:

- PLYWOOD WITH PLASTIC LAMINATE FINISH, RE: FINISH MATERIAL SELECTIONS, SHEET A3.1
- MELAMINE CLAD INDUSTRIAL GRADE MDF; ROSEBURG DURAMINE, 22 LONDON GREY
- STAINLESS STEEL COUNTER TOP AND SPLASH ON 3/4" PLYWOOD, RE: FINISH MATERIAL SELECTIONS, SHEET A3.1
- 1-1/4" QUARTZ COUNTER TOP, RE: FINISH MATERIAL SELECTIONS

NOTE: BELOW PICTURES OF KIOSK DESIGN ARE FOR REFERENCE OF OVERALL DESIGN INTENT. CABINET CONTRACTOR IS TO VERIFY ALL EQUIPMENT TO BE HOUSED IN KIOSK. FAILURE TO DO SO PRIOR TO FABRICATING MAY RESULT IN RE-BUILDING IF DIMENSIONS ARE NOT VERIFIED WITH OWNER PROVIDED EQUIPMENT.

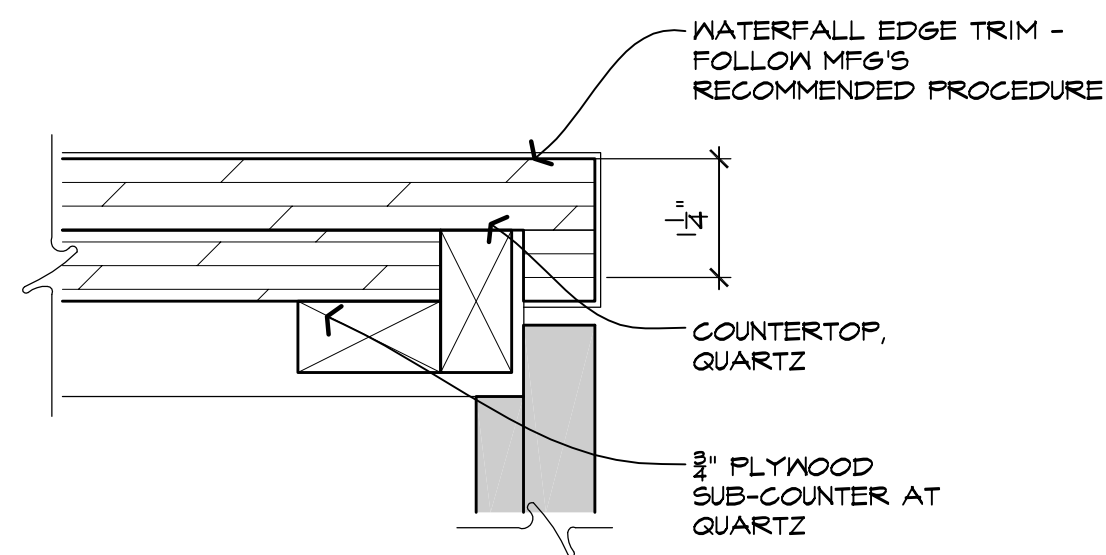


NOTE:
 -IMMUNOTEK TO FURNISH EQUIPMENT TO CABINET CONTRACTOR PRIOR TO FABRICATING UNIT TO VERIFY SIZE AND DETAILS.
 -CONTRACTOR TO BUILD ONE PROTOTYPE OF KIOSK AND GET APPROVAL FROM IMMUNOTEK BEFORE PROCEEDING



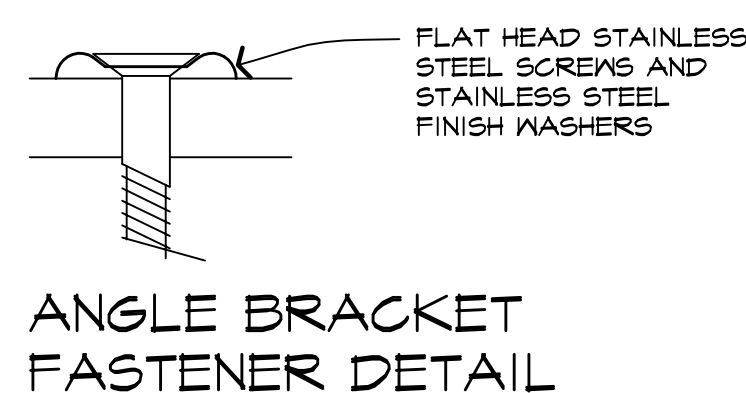
9 BASE CABINET

SCALE: 1 1/2"=1'-0"

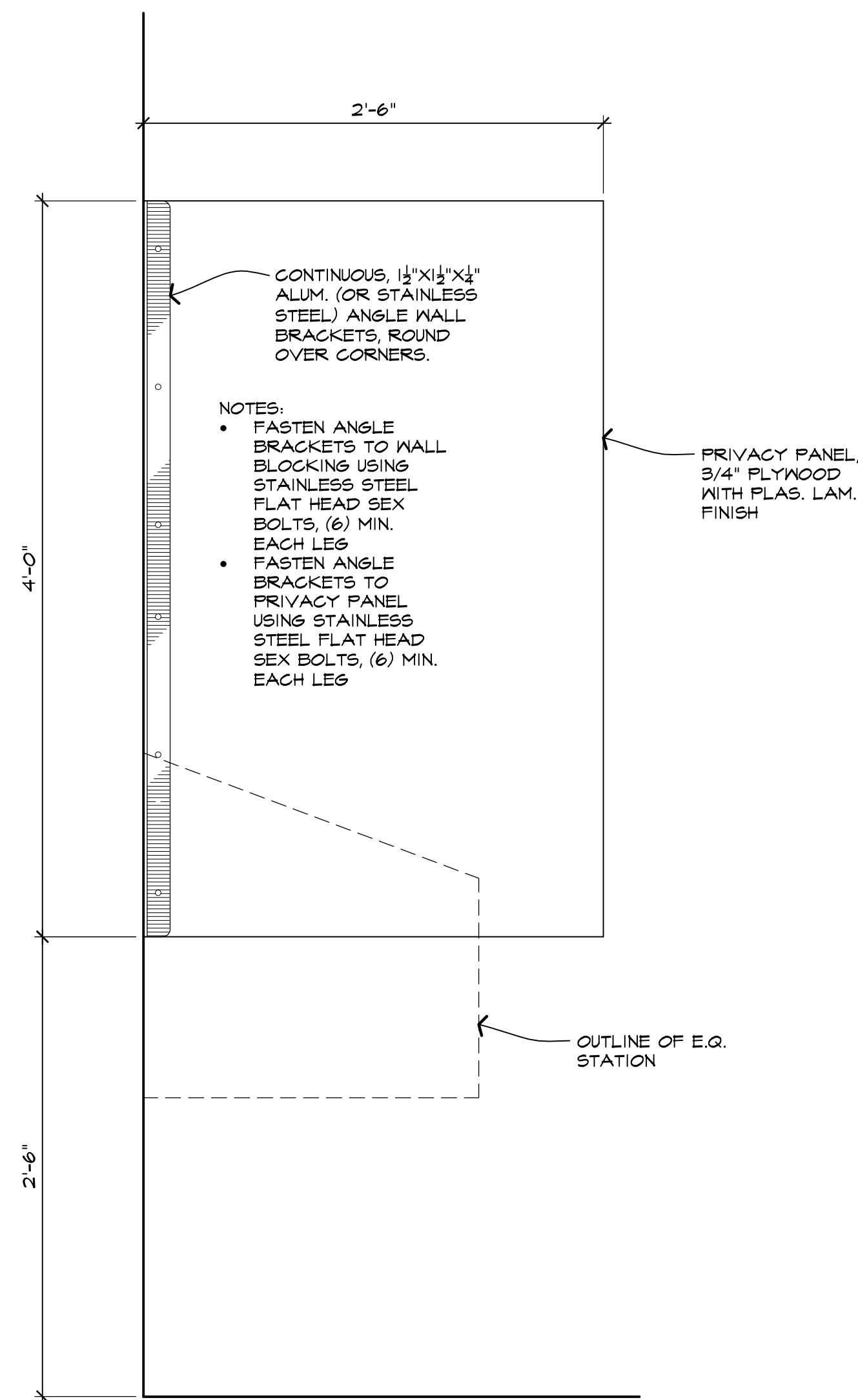


QUARTZ COUNTERTOP 2 EDGE DETAIL

SCALE: 6"=1'-0"

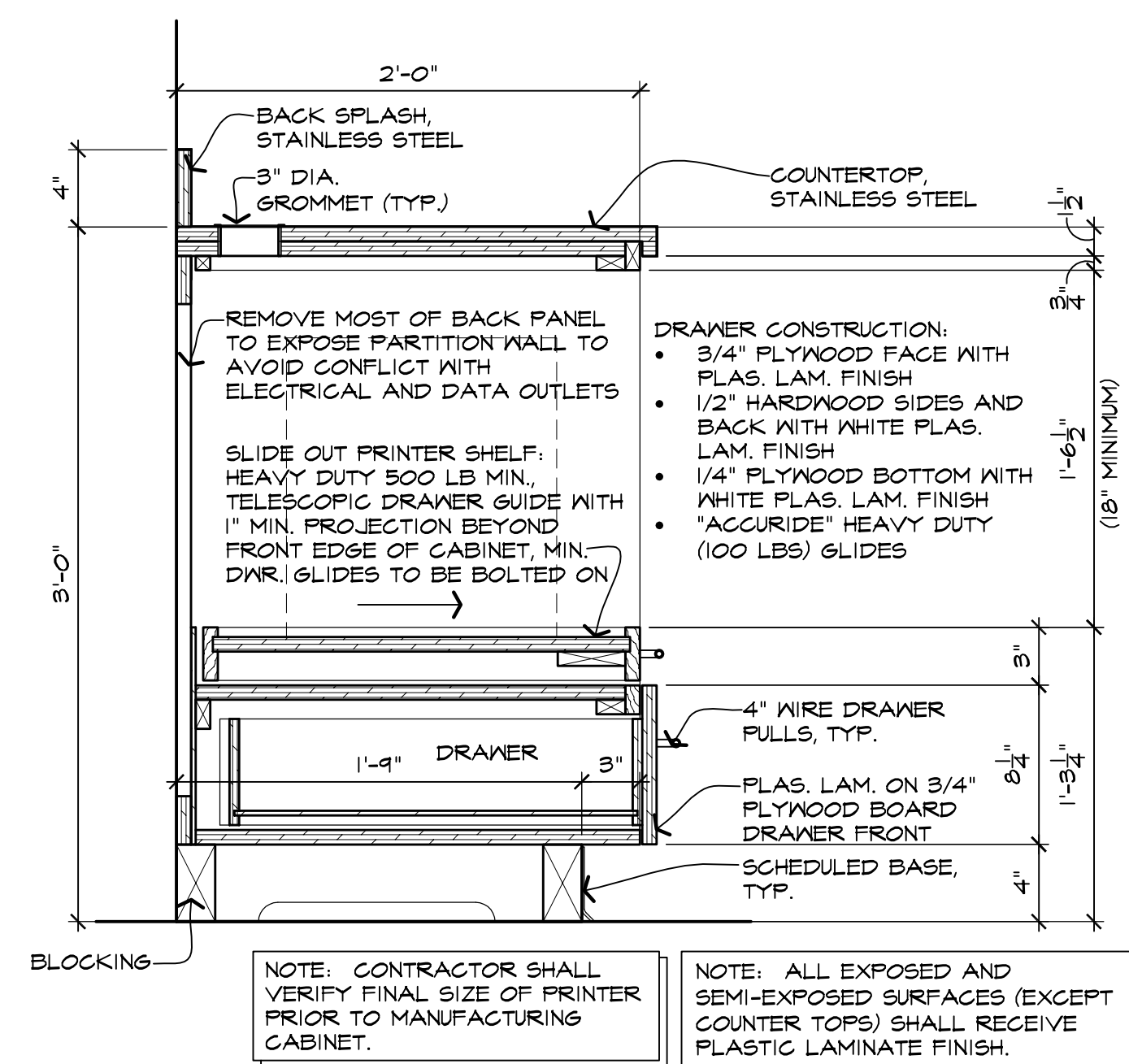


ANGLE BRACKET FASTENER DETAIL



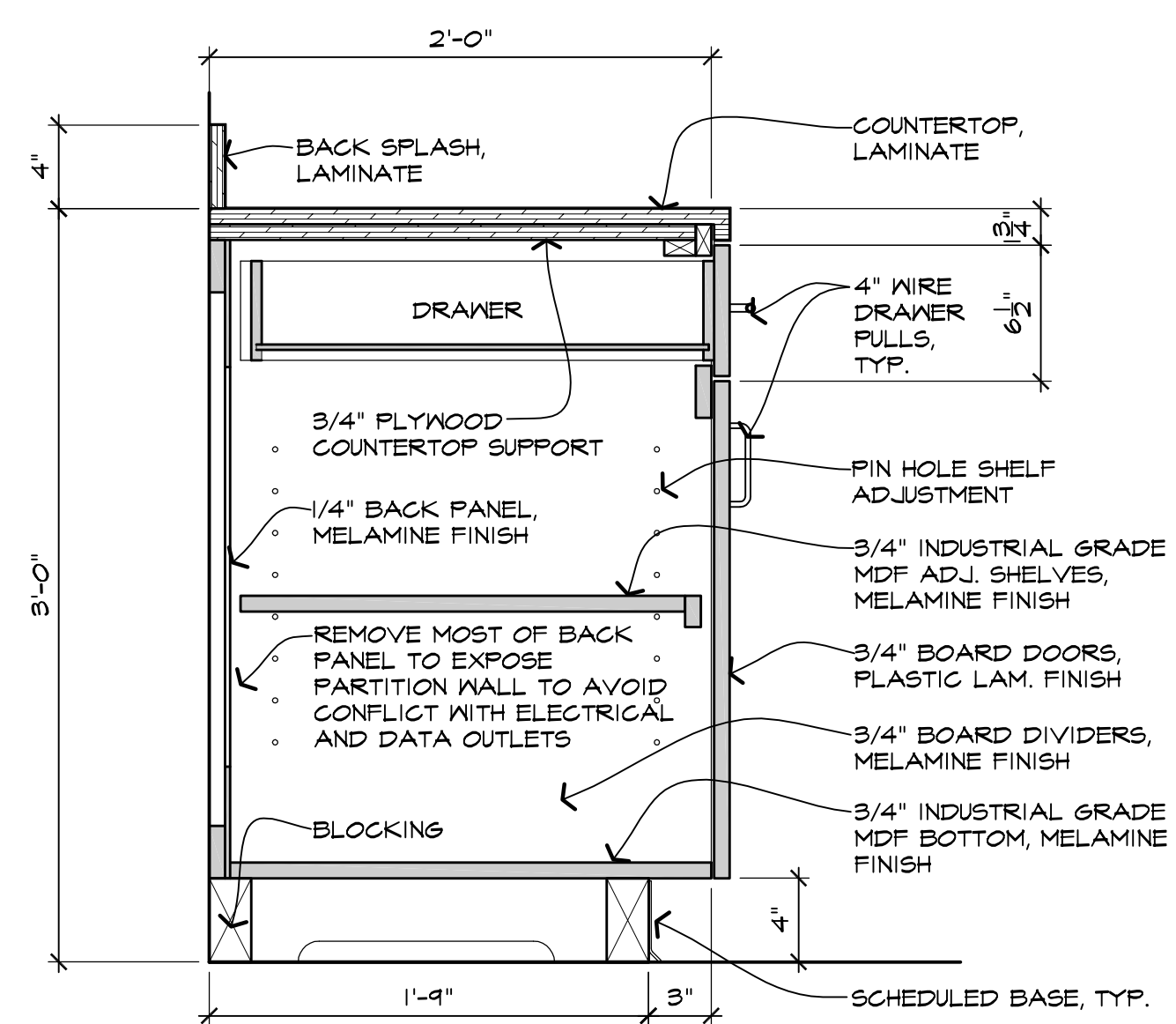
10 BASE CABINET

SCALE: 1 1/2"=1'-0"



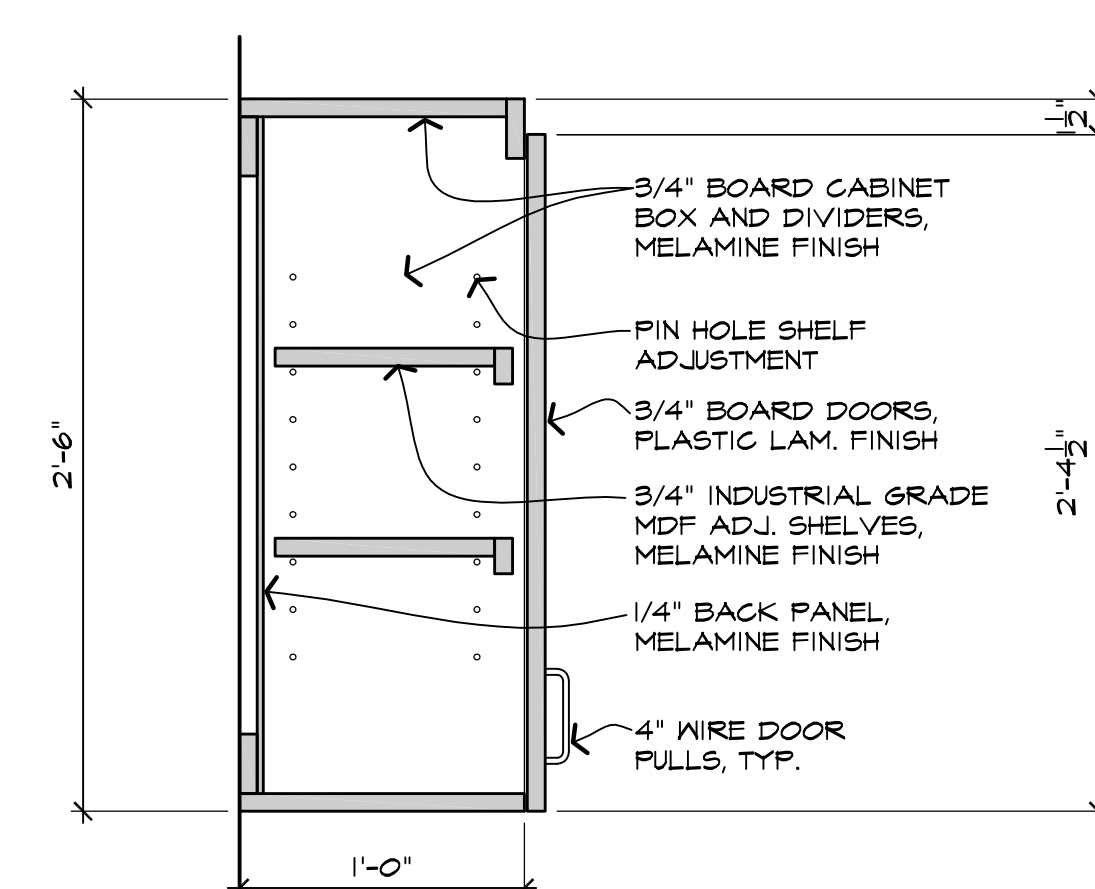
3 BASE CABINET

SCALE: 1 1/2"=1'-0"



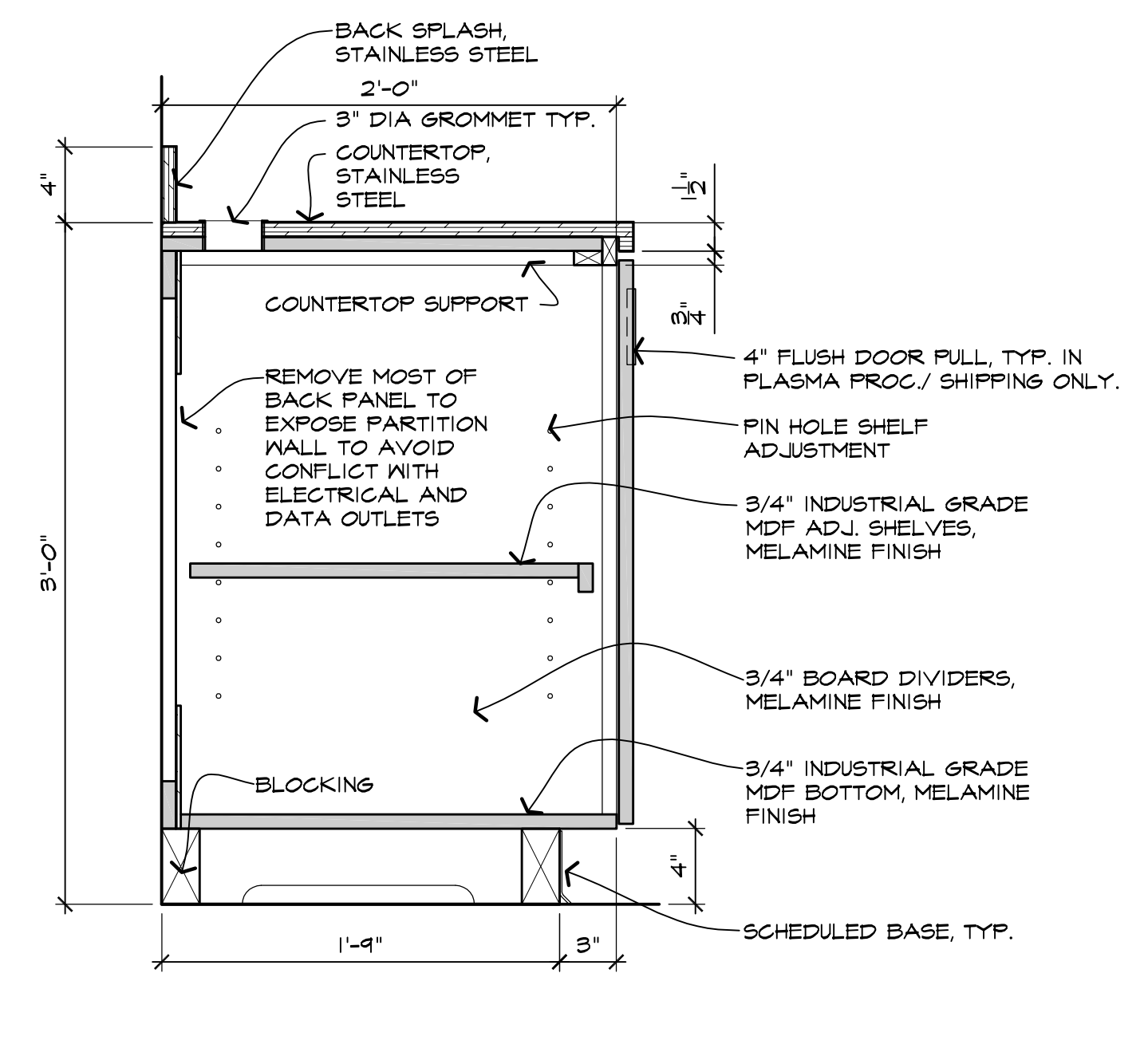
7 BASE CABINET

SCALE: 1 1/2"=1'-0"



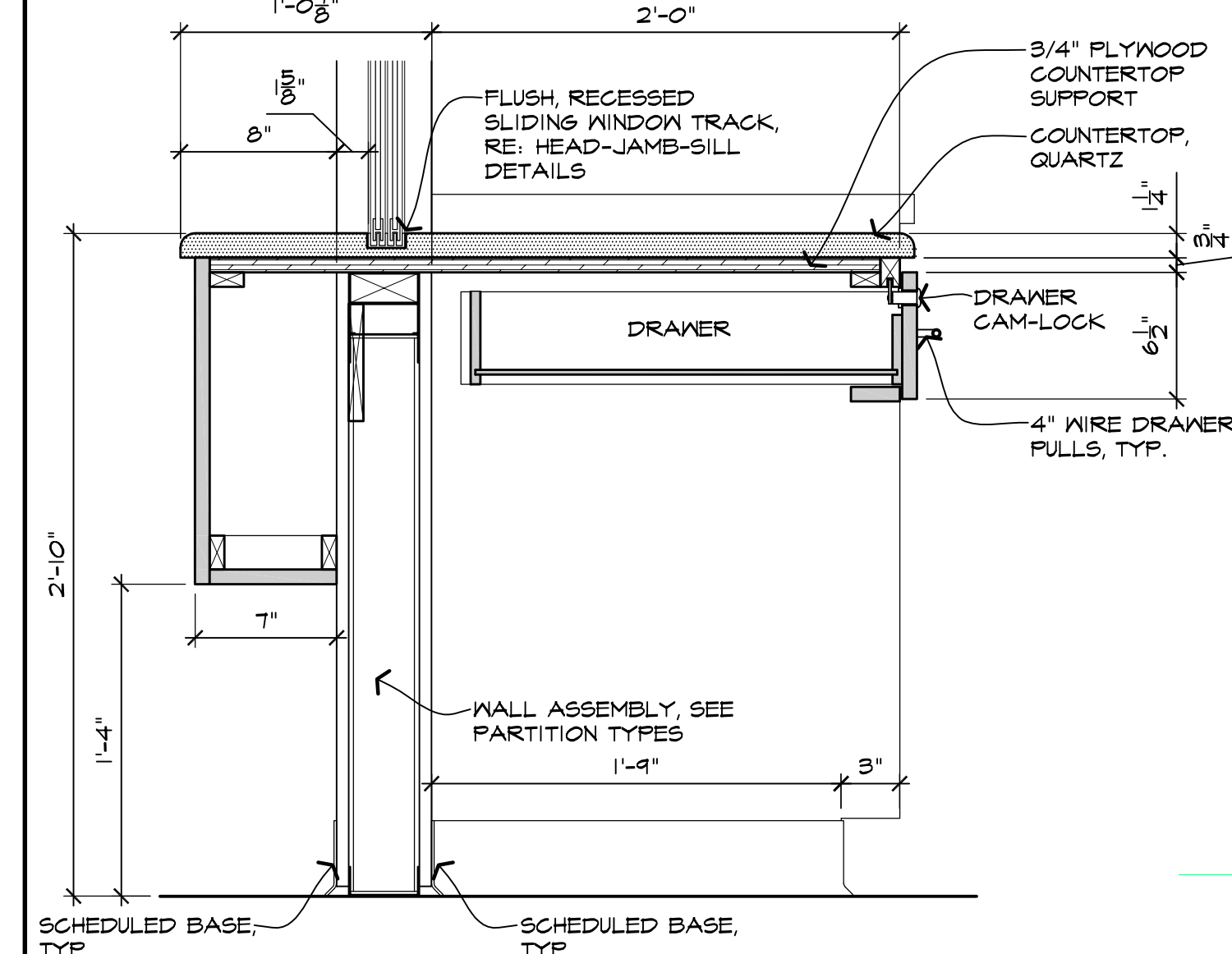
11 UPPER CABINET

SCALE: 1 1/2"=1'-0"



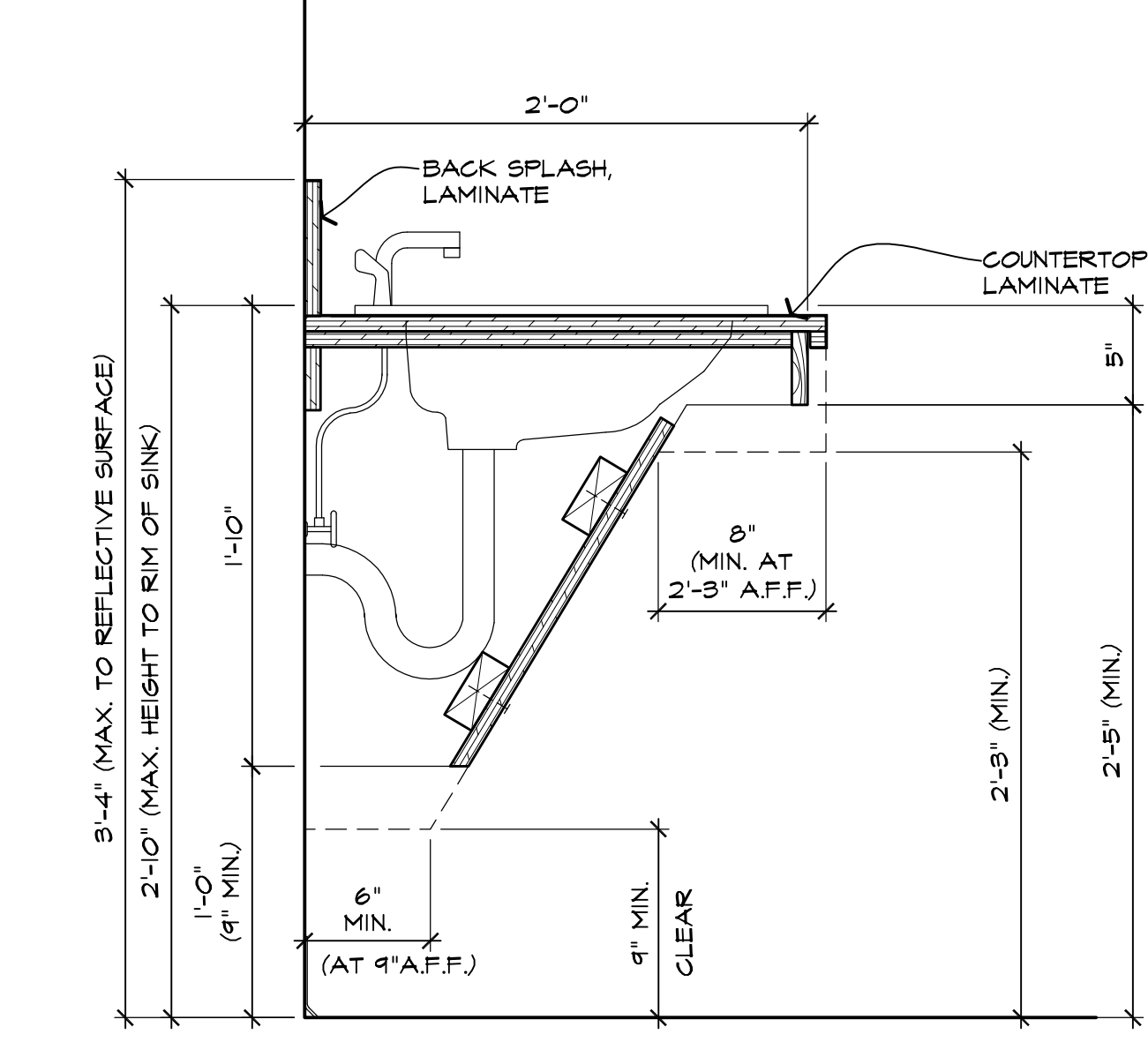
4 BASE CABINET

SCALE: 1 1/2"=1'-0"



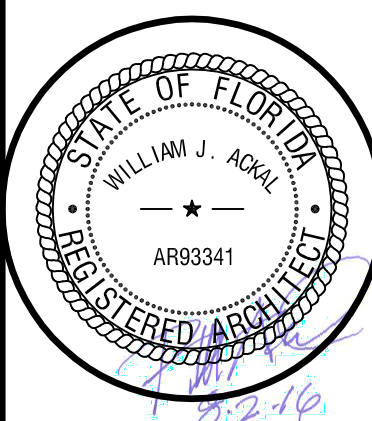
8 BASE CABINET

SCALE: 1 1/2"=1'-0"



SINK/ LAV. 12 COUNTER DETAIL

SCALE: 1 1/2"=1'-0"



COPYRIGHT © 2016 ACKAL ARCHITECTS, APC
 THIS DOCUMENT IS THE PROPERTY OF ACKAL ARCHITECTS, APC. THIS DOCUMENT MAY NOT BE COPIED, REPRODUCED OR USED WITHOUT WRITTEN CONSENT FROM ACKAL ARCHITECTS, APC.
 project no. 16-002
 date: 08-02-2016
 project architect: B.A.
 project manager: A.D.
 drawn by: A.D., J.L., C.T.
 file name: LAKEWORTH
 revised:
 plot scale: 1:1
 sheet name:

MILLWORK SECTION DETAILS
 sheet no.