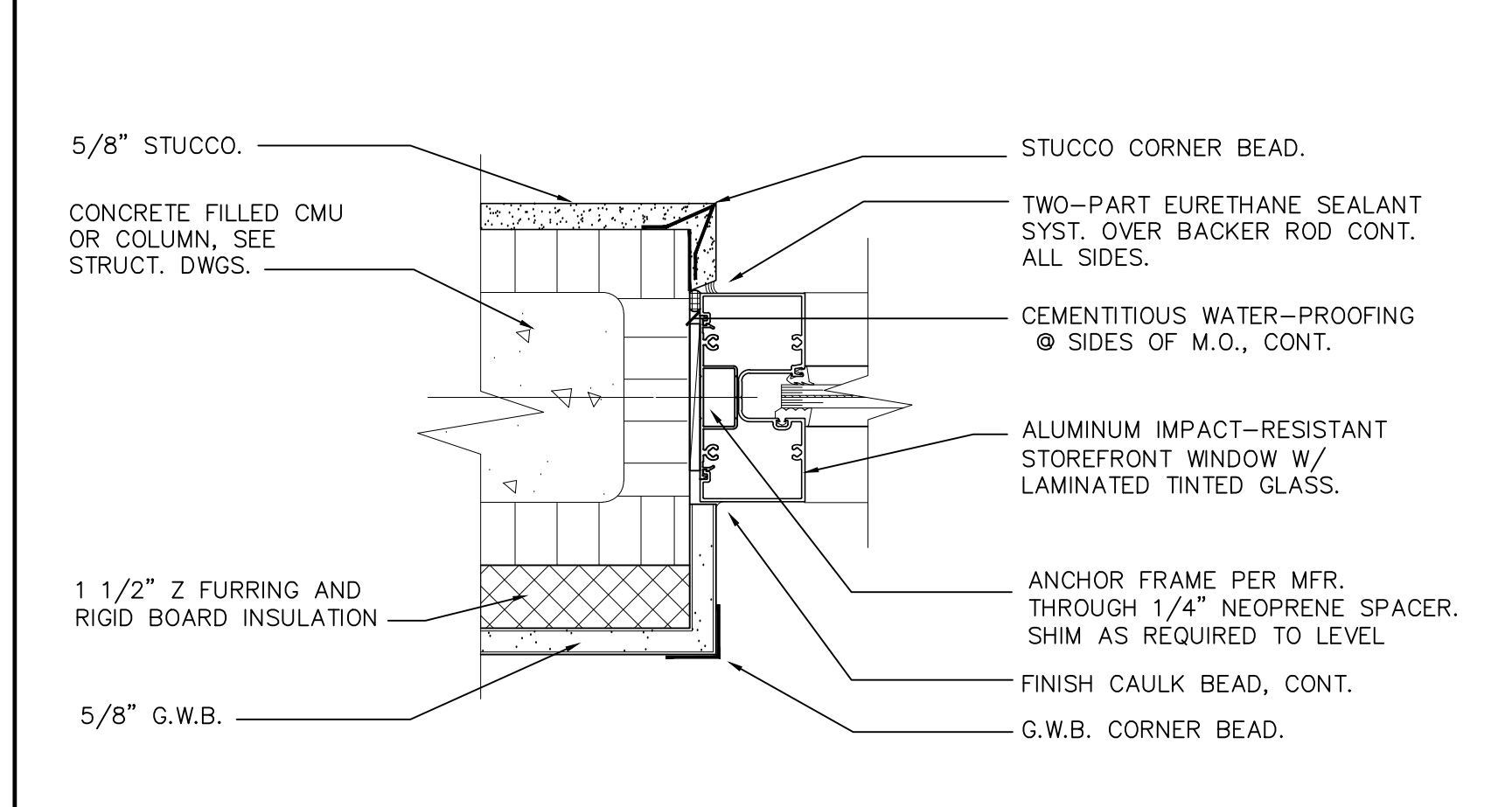
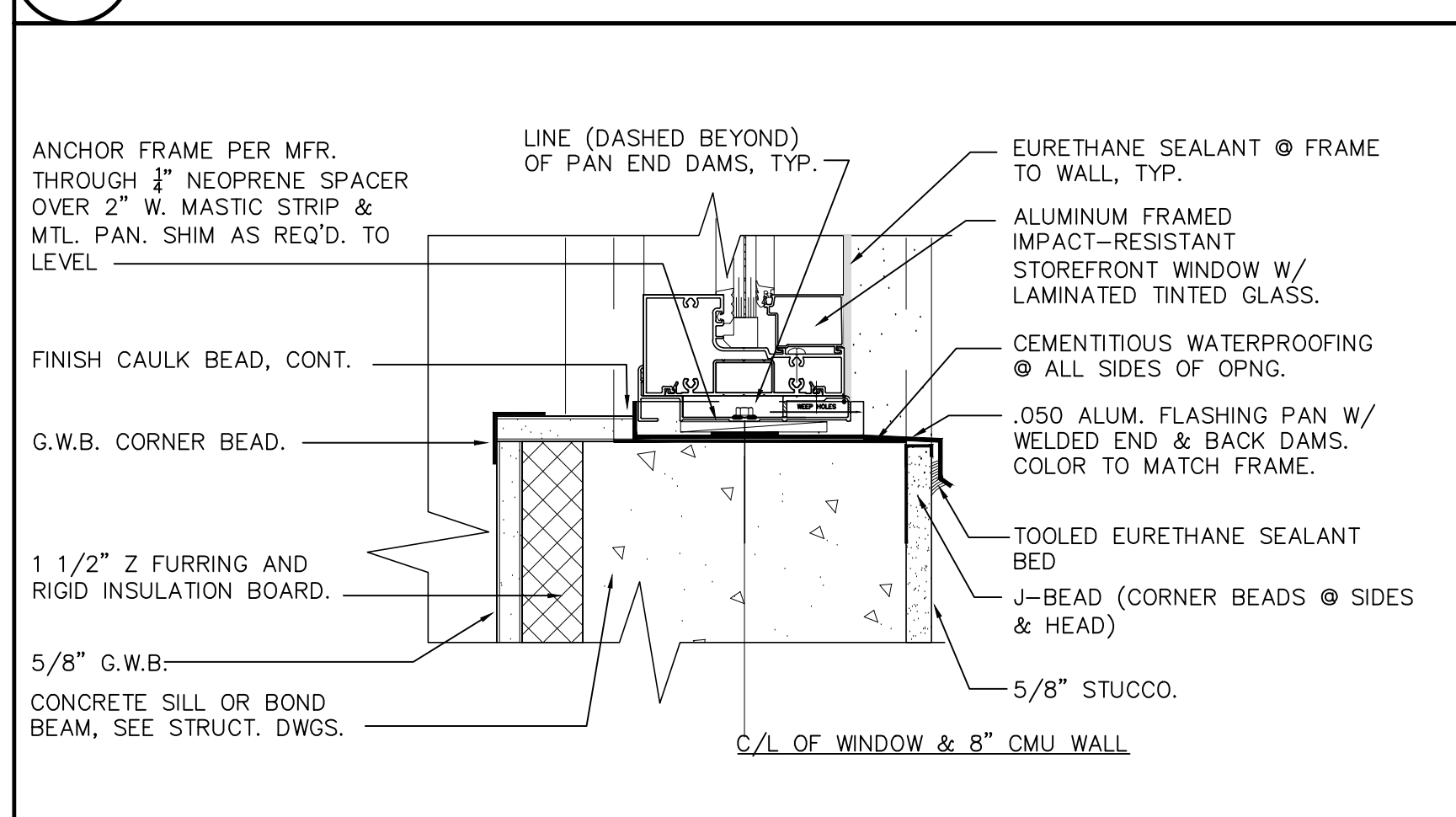


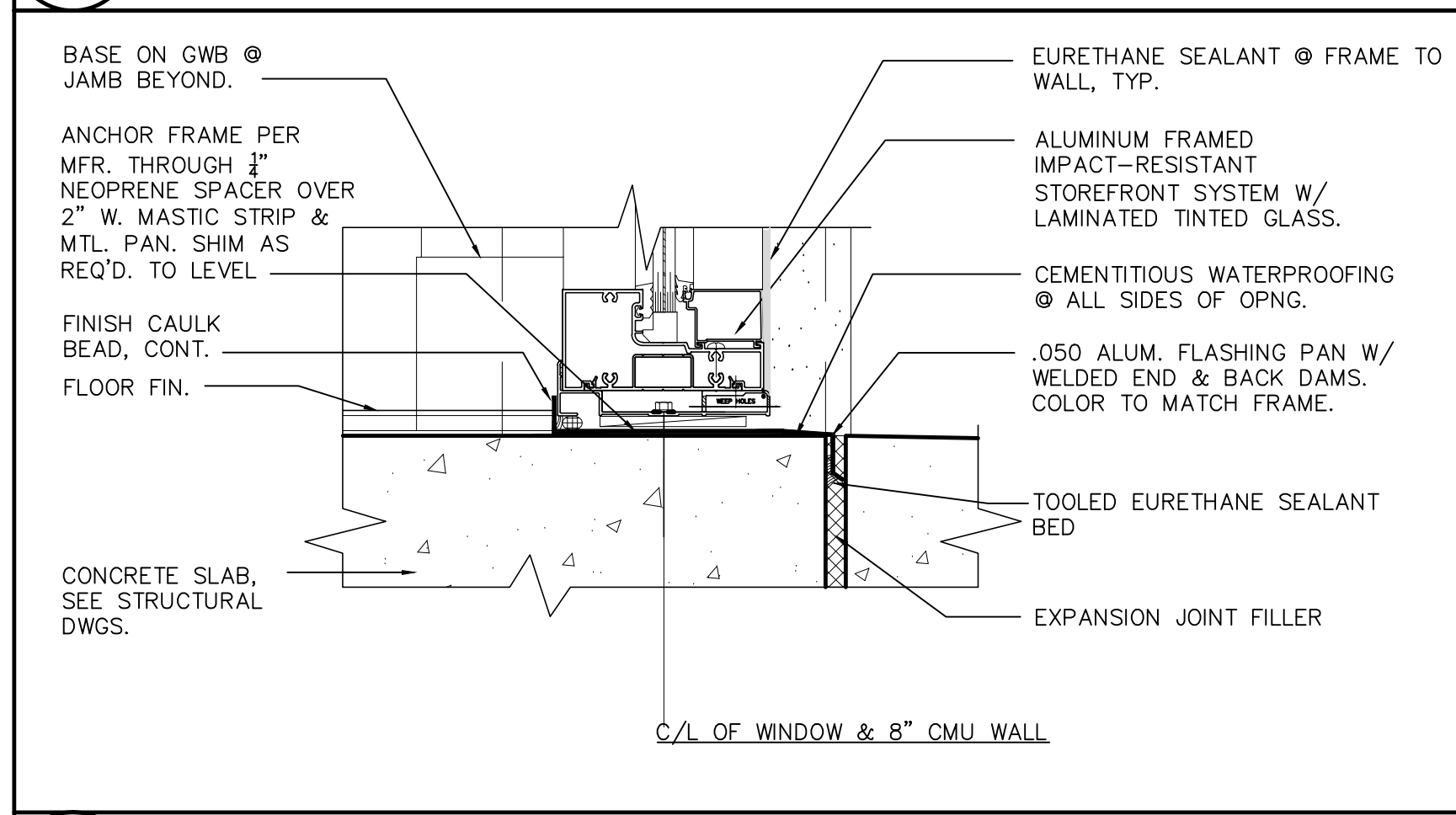
1 STOREFRONT WINDOW HEAD
A902 SCALE: 3" = 1'-0"



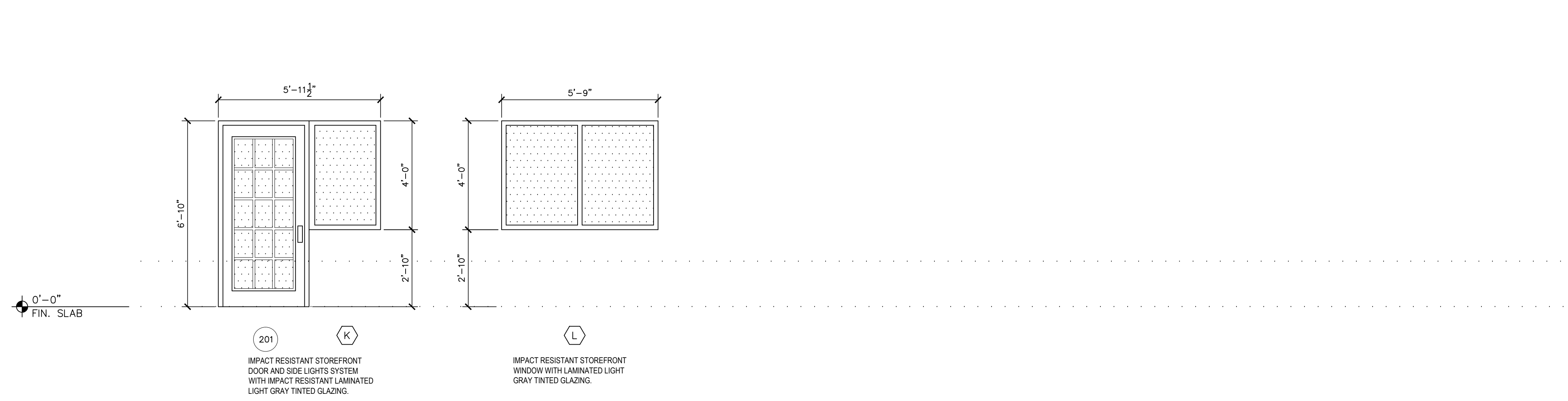
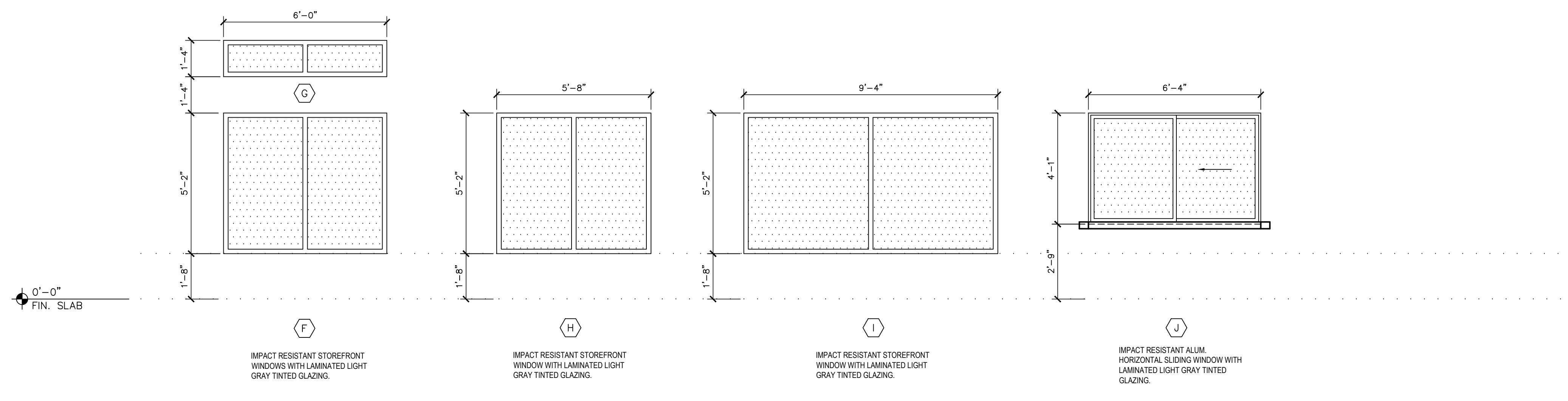
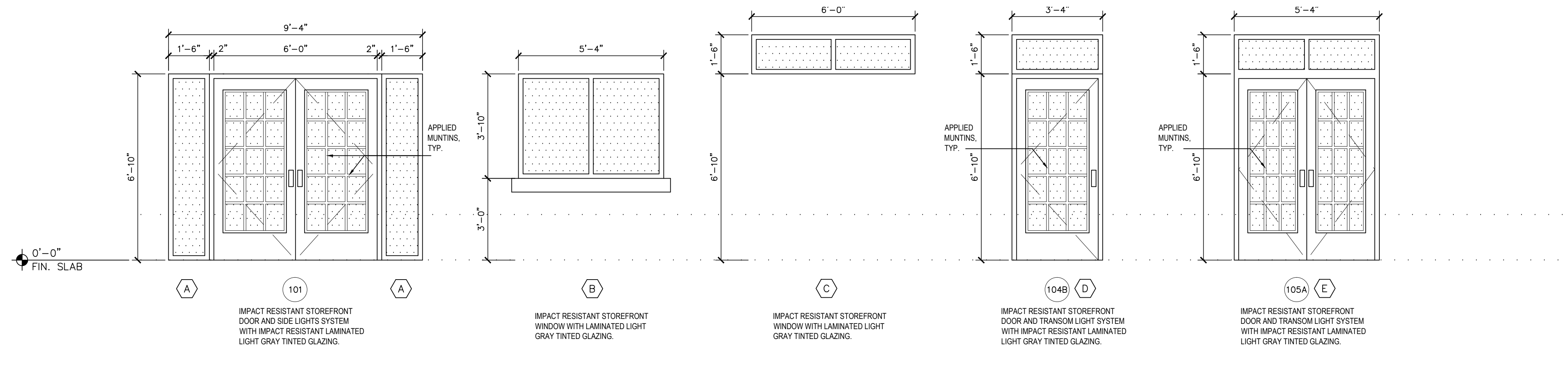
2 STOREFRONT WINDOW JAMB
A902 SCALE: 3" = 1'-0"



3 STOREFRONT WINDOW SILL
A902 SCALE: 3" = 1'-0"



4 STOREFRONT WINDOW SILL @ FLOOR
A902 SCALE: 3" = 1'-0"



5 STOREFRONT WINDOW ELEVATIONS
A902 SCALE: 3/8" = 1'-0"

GLAZING NOTES	
1.	ALL EXTERIOR GLAZING SHALL BE LARGE MISSILE IMPACT RATED.
2.	ALL EXTERIOR GLAZING SHALL HAVE A LIGHT GRAY TINT.
3.	ALL EXTERIOR WINDOW FRAMES SHALL BE MILL FINISHED, ANODIZED COLOR.
4.	EXTERIOR TYPICAL WINDOW HEAD HEIGHT SHALL BE 8'-0" U.N.O.
5.	INTERIOR TYPICAL WINDOW HEAD HEIGHT SHALL BE 7'-0" U.N.O.

REVISIONS	BY

Slattery & Associates
ARCHITECTS
PLANNERS
2060 NW BOCA RATON BLVD.
SUITE 2
BOCA RATON, FL 33431
TEL: 561-392-3848
FAX: 561-392-5402
WWW.SLATTERYARCHITECTS.COM

**WOODFIELD HUNT CLUB
CLUBHOUSE RENOVATION
AND EXPANSION**
4420 WOODFIELD BLVD.
BOCA RATON, FLORIDA

DATE OF SEAL: 7-27-16
SLATTERY & ASSOCIATES
FLORIDA REGISTRATION # AA0003381

WINDOW DETAILS

DRAWN	CR, DR
CHECKED	CR
DATE	7-21-16
SCALE	AS NOTED
JOB NO.	2014-33
SHEET	

A902

C.D. - 7-21-16