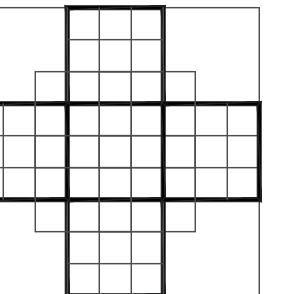


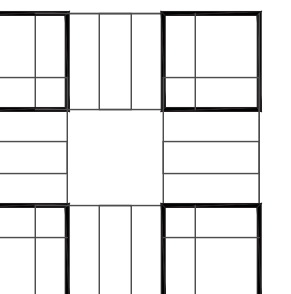
COLOME
& Associates, Inc.
AA 0003439
530 24TH STREET
WEST PALM BEACH
FLORIDA 33407
(561) 833-9147
Architect: ELIZABETH A. G. COLOME
REG. NUMBER: AR 0014839



P.B.C.
R.G. KREUSLER PARK
RESTROOM BUILDING
AND ENTRY DRIVE
MODIFICATIONS
PBC NO 14204
2885 SOUTH OCEAN BLVD.

LAKE WORTH
FLORIDA

PROJECT NO.
201402



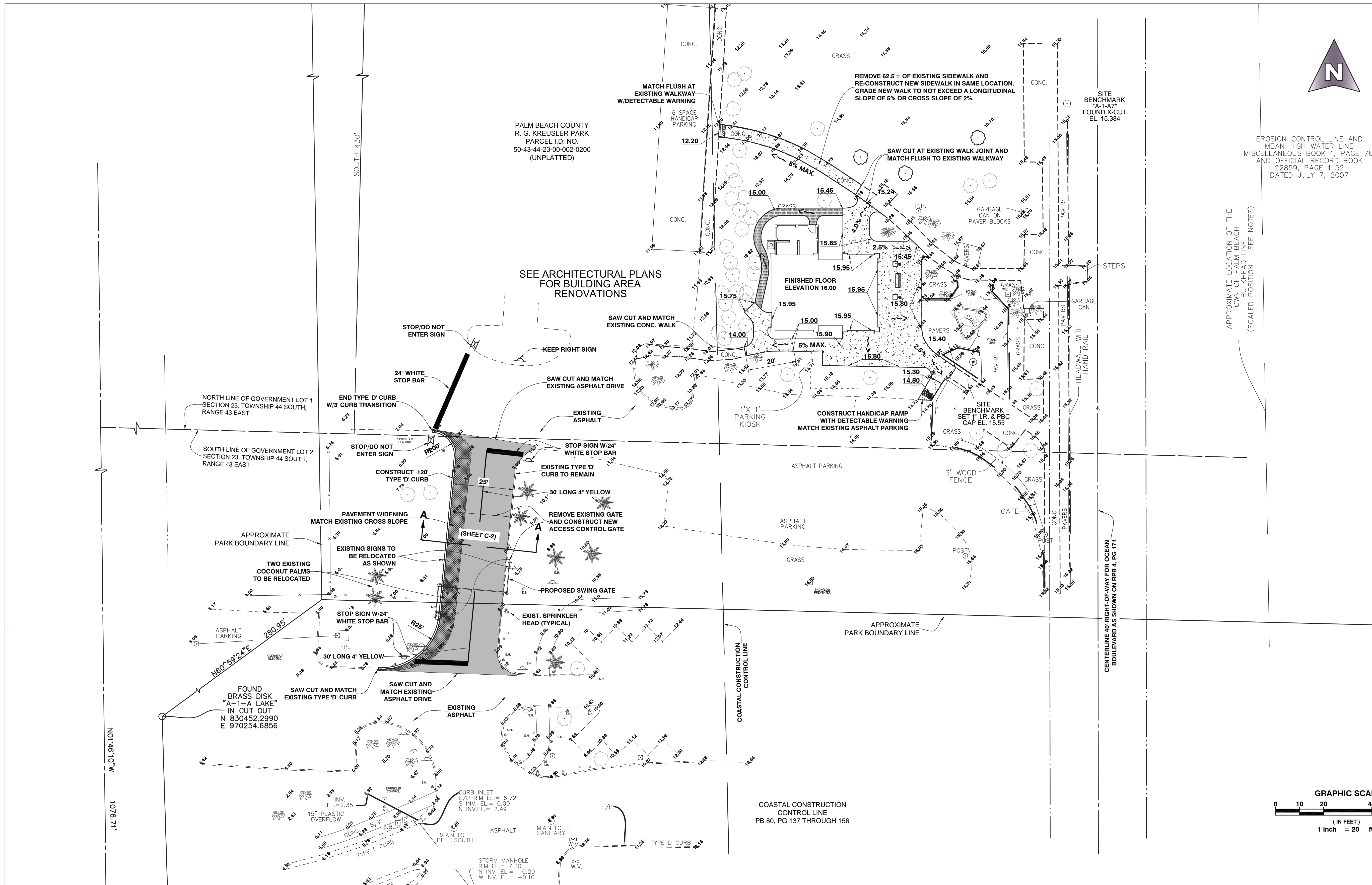
SHEET TITLE:
ROADWAY
ALTERATION
PLAN

REVISIONS:
10/26/15 PER RED LINED COMMENTS

DATE
6/4/15
DRAWN BY:
MV
CHECKED BY:
FR

SHEET
NUMBER:

C-1

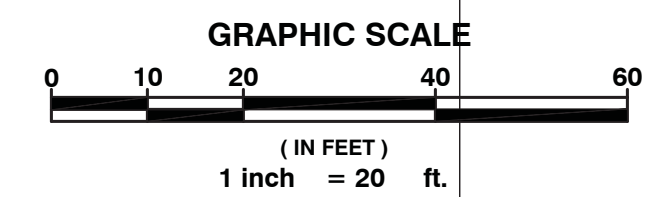
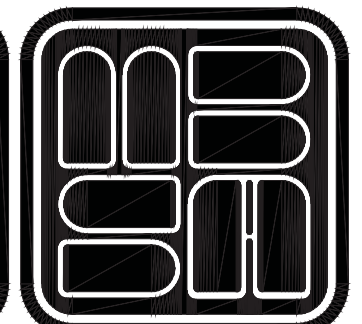


LEGEND:
 NEW PAVEMENT AND BASEROCK
 ASPHALT OVERLAY

100% DOCUMENT 8/17/15

FREDERICK ROTH, JR., P.E.
FLORIDA LICENSE # 18991
FOR MICHAEL B. SCHORAH
AND ASSOCIATES, INC.

**MICHAEL B. SCHORAH
& ASSOCIATES, INC.**
ENGINEERS SURVEYORS DEVELOPMENT CONSULTANTS
TEL. (561) 968-0080
EB# 2438 FAX. (561) 642-9726 LB# 2438
WWW.SCHORAH.COM
1850 FOREST HILL BLVD., SUITE 206
WEST PALM BEACH, FLORIDA 33406



ROADWAY ALTERATION PLAN

SCALE: 1"=20'-0"