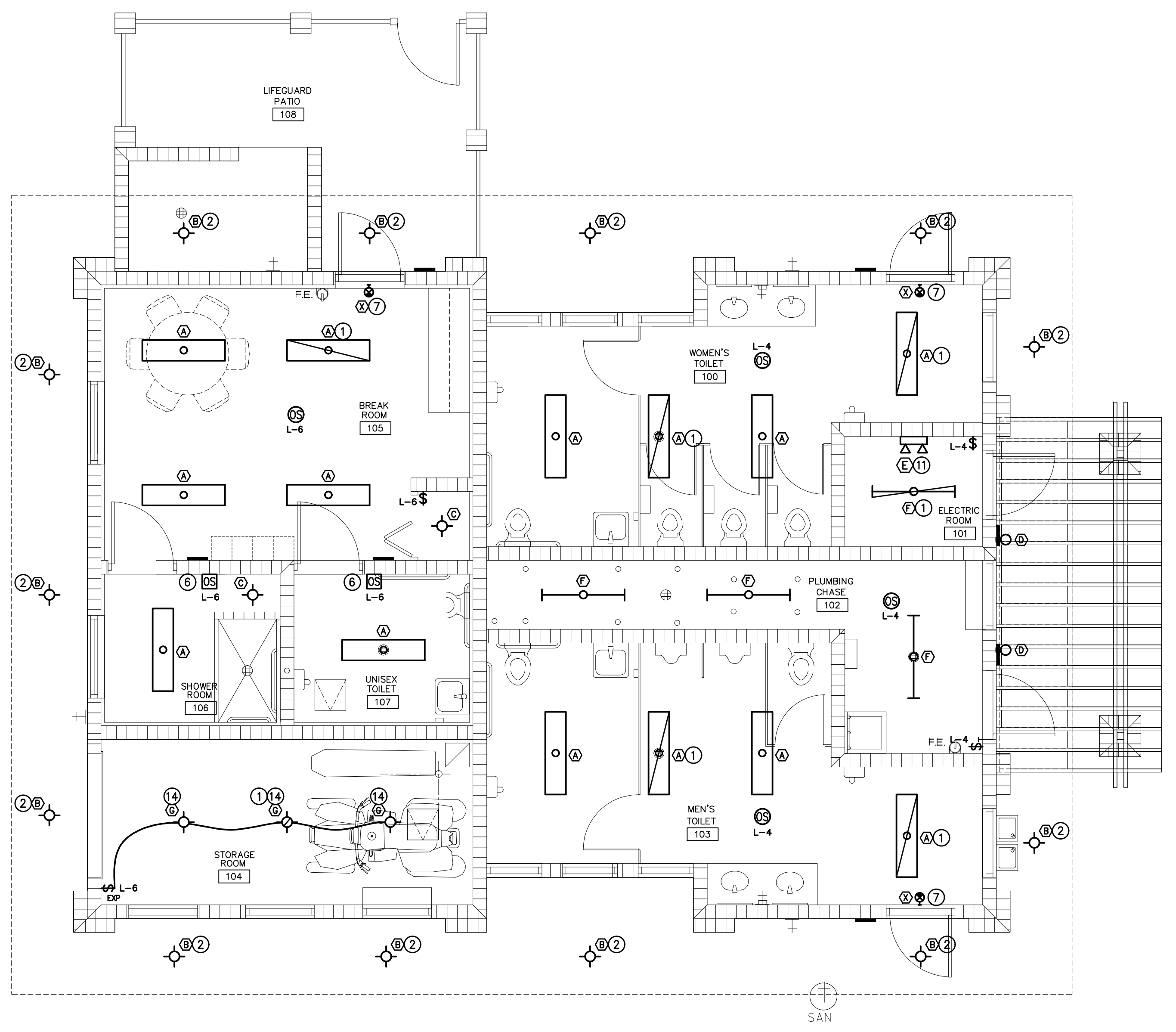
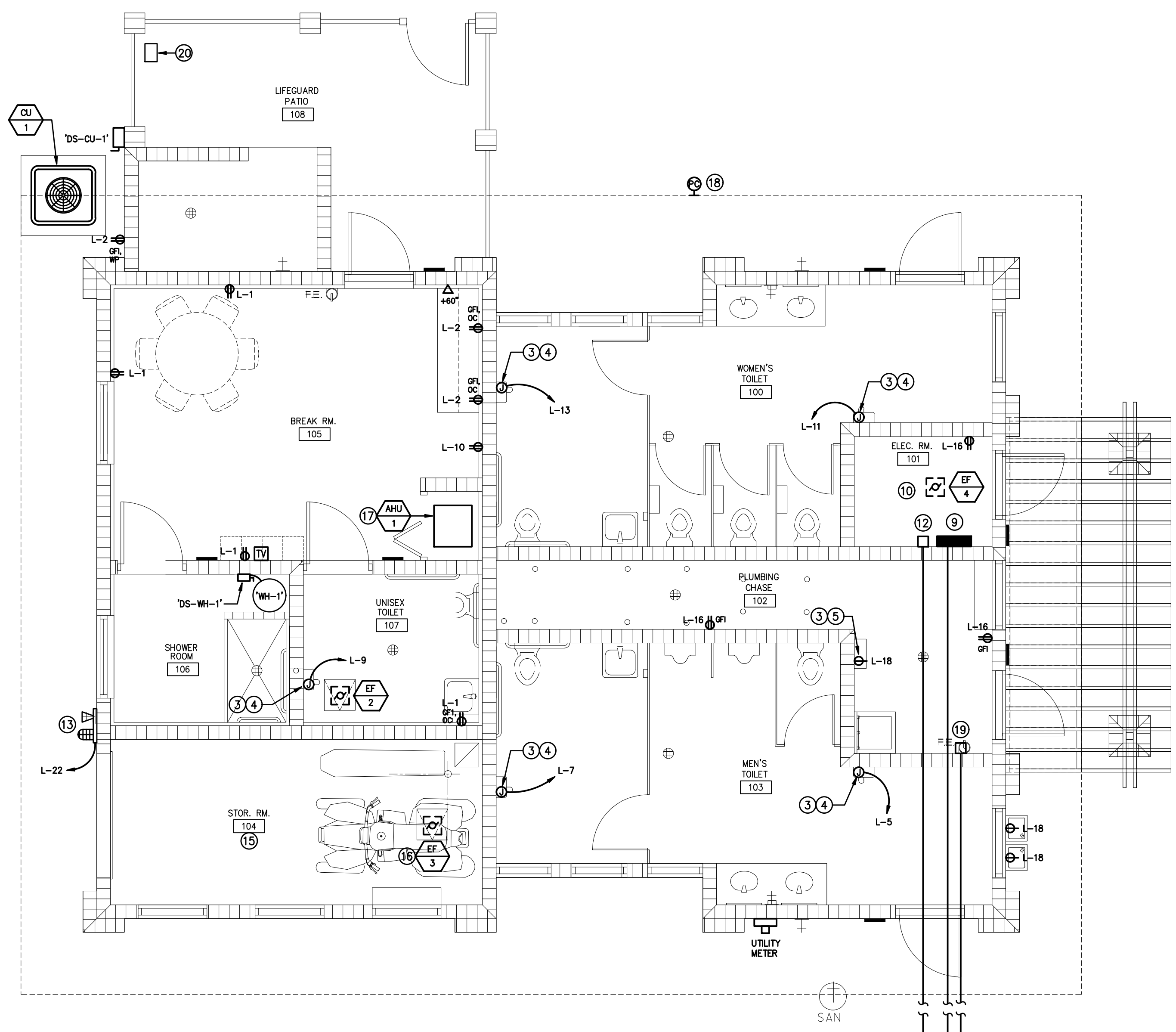


The information contained herein is the property of Johnson, Levinson, Ragan, Davila, Inc. (JLRD) and is intended for copyright. Unauthorized use is prohibited. JLRD makes no warranty or guarantee as to the accuracy or completeness of the information contained herein, use without full verification is at the user's own risk. The user hereby represents, warrants, and agrees that use shall be confined to the specific conditions of the above conditions.

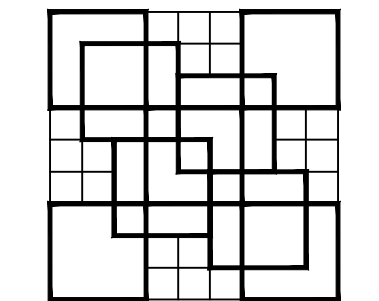


1 LIGHTING FLOOR PLAN - RESTROOM BLDG.
 SCALE: 1/4" = 1'-0"
 NORTH

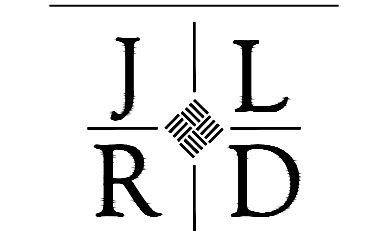


2 POWER AND SYSTEMS FLOOR PLAN - RESTROOM BLDG.
 SCALE: 1/4" = 1'-0"
 NORTH

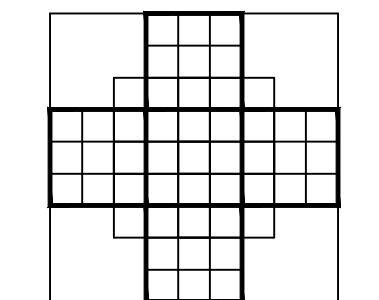
- PLAN NOTES:**
- 1 FIXTURE WITH EMERGENCY BATTERY BALLAST, CONNECT AHEAD OF LOCAL SWITCHING DEVICES.
 - 2 CONNECT FIXTURE TO CIRCUIT 'L-8' VIA CONTACTOR 'CT-TC'. REFER TO LIGHTING CONTROL DIAGRAM, 2/E-3 FOR LIGHTING CIRCUIT.
 - 3 FIELD COORDINATE EQUIPMENT LOCATION AND VERIFY ELECTRICAL REQUIREMENTS WITH MANUF. AND ADJUST CIRCUIT ACCORDINGLY.
 - 4 J-BOX FOR HAND DRYER. PROVIDE DISCONNECT FOR HAND DRYER IF NOT INTEGRAL TO DRYER. COORDINATE LOCATION WITH ARCHITECTURAL DWGS.
 - 5 DEDICATED RECEPTACLE FOR REMOTE DRINKING FOUNTAIN CHILLER. LOCATE WITHIN ENCLOSURE.
 - 6 OCCUPANCY SENSOR TO ENERGIZE LIGHTING FIXTURE AND EXHAUST FAN.
 - 7 CONNECT EXIT LIGHT TO CIRCUIT 'L-12', UNSWITCHED.
 - 8 STUB OUT (6) 2" PVC CONDUITS; (2) FROM PANEL 'L', (2) FROM 'CT-TC' AND (2) FROM CORNER OF ROOM FOR FUTURE TELCOM. TO 10' MINIMUM OUTSIDE OF CONCRETE WALKWAY. CAP AND ELECTRONICALLY MARK OUTSIDE END.
 - 9 PANEL 'L' - 120/240V, 1Ø, 3W
 - 10 LAYOUT EQUIPMENT TO COMPLY WITH NEC WORK CLEARANCES.
 - 11 CONNECT EMERGENCY BATTERY UNIT TO LOCAL LIGHTING CIRCUIT UNSWITCHED.
 - 12 TIMECLOCK 'TC' AND LIGHTING CONTACTORS 'CT-TC'.
 - 13 WARNING LIGHT/ALARM NOTIFICATION PANEL. CONNECT TO 120V, 20A, 1P BREAKER, CIRCUIT 'L-22' W/2#12, 1#12G - 3/4"C.
 - 14 USE EXPLOSION PROOF FIXTURE WITH EXPLOSION PROOF WIRING AND CONNECTIONS IN THIS ROOM.
 - 15 USE EXPLOSION PROOF WIRING METHODS IN THIS ROOM.
 - 16 IN-LINE EXPLOSIONPROOF EXHAUST FAN. USE EXPLOSION PROOF WIRING METHODS.
 - 17 AHU WITH INTEGRAL DISCONNECT. CONNECT TO CIRCUIT 'L-35,37' VIA 2#12, 1#12G - 3/4"C.
 - 18 PHOTOCELL FOR EXTERIOR LIGHTING CONTACTOR 'CT-TC'.
 - 19 IRRIGATION TIME CLOCK. CONNECT TO CKT. 'L-21'. CONTRACTOR SHALL FIELD VERIFY LOCATION.
 - 20 IRRIGATION CONTROLLER, RELOCATED HERE TEMPORARILY UNTIL FINAL LOCATION IS DETERMINED BY OWNER. PROVIDE ALL REQ'D. ELECTRICAL.



COLOME & Associates, Inc.
 AA 0003439
 8500 24TH STREET
 WEST PALM BEACH
 FLORIDA 33411
 (561) 833-9147



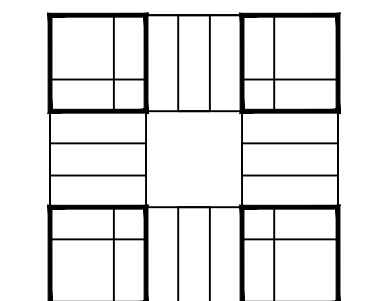
**JOHNSON, LEVINSON
 RAGAN, DAVILA, INC.**
 CONSULTING ENGINEERS
 1800 CONVENT ROAD, SUITE 100
 WEST PALM BEACH, FLORIDA 33411
 (561) 689-2313 (661) 689-2312 FAX
 www.jlr.com
 Certification Number 06599
 Michael P. Linden, P.E. #98094
 Charles C. Gableman, P.E. #31916



P.B.C.
 R.Q. KREUBLER PARK
 RESTROOM BUILDING
 AND ENTRY DRIVE
 MODIFICATIONS
 PBC NO 14204
 2885 SOUTH OCEAN BLVD.

LAKE WORTH
 FLORIDA

PROJECT NO.
 201402
 JLRD NO.
 115042



**SHEET TITLE:
 LIGHTING, POWER
 AND SYSTEMS
 PLAN**

REVISIONS:

DATE
 1/20/15
 DRAWN BY:
 JDY
 CHECKED BY:
 CCG

SHEET
 NUMBER

E-2