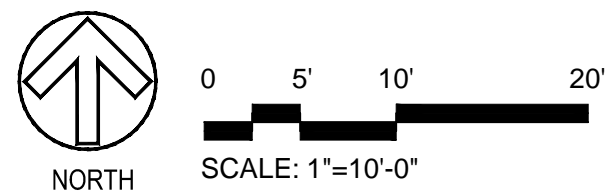
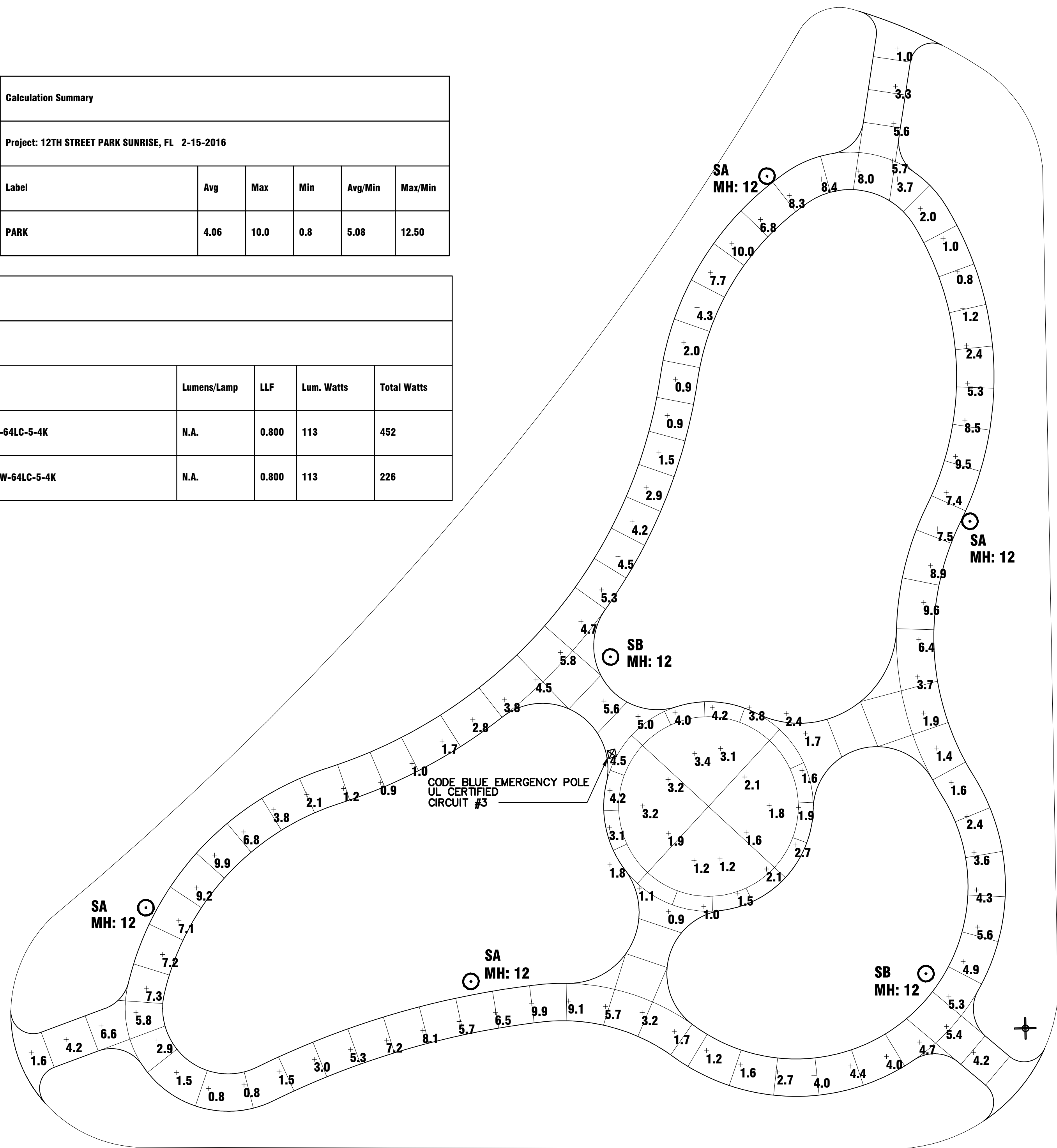


Calculation Summary					
Project: 12TH STREET PARK SUNRISE, FL 2-15-2016					
Label	Avg	Max	Min	Avg/Min	Max/Min
PARK	4.06	10.0	0.8	5.08	12.50

Luminaire Schedule						
Project: 12TH STREET PARK SUNRISE, FL 2-15-2016						
Symbol	Qty	Label	Description	Lumens/Lamp	LLF	Total Watts
⊙	4	SA	VISIONAIRE APX-1-T2-64LC-5-4K	N.A.	0.800	452
⊙	2	SB	VISIONAIRE APX-1-T5W-64LC-5-4K	N.A.	0.800	226



**Apex LED** Project Name: \_\_\_\_\_ Catalog Number: \_\_\_\_\_ Type: \_\_\_\_\_

**Dimensional Drawings**

Fixture	A	B	C	D	Max. Watts	Lbs
APX-1	26"	29"	16"	4"	216W	33

The new Apex LED Series offers clean, functional styling that blends with a broad range of architecture. The cast aluminum housing with integrated pole top filter anchors aluminum mounting rods to support the cast aluminum shade that houses the LED light engine. The LED's performance and the driver's life are maximized by enclosing them in the two separate compartments.

The LED light assemblies come with 64 or 128 LED's. Five optical distribution patterns are available. Choose between 4000 or 5000 Kelvin temperature of the LED's.

A durable polyester powder coat finish is guaranteed for five years; and is available in standard or custom colors.

It combines LED performance and advanced LED thermal management technology and provides outdoor area lighting that is both energy efficient and aesthetically pleasing.

Model	Optics	Source	Current	Kelvin	Voltage	Mounting	Finish	Options
APX-1	Type II (T2)	# of LEDs 64 (64LC)	mA 350 (3)	4000K Neutral White (4K)	120-277 Universal Voltage (UNV)	Pole Top Shy Over 4' CL, 5' Tall Series (Control Factory For Other Series)	White (WH) Smooth White (SWH)	Button Type Photocell Specialty Voltage (PC120) (PC208) (PC240) (PC277)
	Type III (T3)	128 (128LC)	530 (5)	5000K Cool White (55K)	480 (5) 347 (8)	Arm Mount *Works only with ARM MOUNT VARIABLE VOLTAGE (AM)	Black (BK) Smooth Black (SBK)	0-10v Dimming Driver (DIM)
	Type IV (T4)						Bronze (BZ) Forest Green (FG)	Dimming/Controls Control Factory
	Type V (T5)						Silver Metallic (SL)	Motion Sensor/Control Wall Stopper FSP-211 2" Diameter @ 8' CLD HT. Must specify Dimming Driver. Can use with Dimming Control
	Type V-W (T5W)						Graphite (GP) Weathered Brown (WB) Soft Gold (SG)	Wireless Control *Control Factory *Wireless control 64LC only
							Custom Color (CC)	

For more detailed information on mounting, wiring or installation instructions, please contact factory. If cables are not shown with luminaire, please specify mounting hardware. This document contains proprietary information of Visionaire Lighting, LLC. Any use of this information requires the written approval of Visionaire Lighting, LLC. In keeping with our TQM policy of continuous improvement, Visionaire reserves the right to change any specifications contained herein without prior notice.

**VISIONAIRE LIGHTING**  
Performance. It's A Whole New Light.

Panel Data	Circuit No.	Circuit Breaker	VA	Description of Load	Wire & Conduit
A	1	20A-1P	400	Receptacles	#10 + 10 Gnd
277/240V	2	20A-1P	678	Pole Lights	#10 + 10 Gnd.
1 Phase	3	20A-1P	100	Code Blue	#12 + #12 Gnd.
3 Wire	4	20A-1P	100	Irrigation Controls	#12 + #12 Gnd.
40A-2P	5	20A-1P	-	Spare	
	6	20A-1P	-	Spare	
Main CB	7,8	30A-2P	-	SPD	3 #10
NEMA	9,10	Space			
3R	11,12	Space			
10 KAIC	1278 / 240V = 5.3Amps				
Feeder: 3 #8- 1" C from FFL					

**NORMAN F. BRAY, P.E., INC.**  
CONSULTING ELECTRICAL ENGINEER FLORIDA REG. NO. 9978  
FLORIDA CERTIFICATE OF AUTHORIZATION NUMBER 1124  
DN: ML JOB# 15074 2131 HOLLYWOOD BOULEVARD  
SUITE 501 - BOULEVARD LANDMARK  
HOLLYWOOD, FLORIDA 33020-6753  
CK: N.F.B. DATE 29 JUN '16 (954) 925-3217 FAX (954) 925-3247  
E-MAIL: bray501@bellsouth.net

LEAVE BLANK - FOR CITY USE ONLY

DATE:	
SCALE:	
DESIGNED BY:	-
DRAWN BY:	-
CHECKED BY:	-
APPROVED BY:	-

**CRAVEN THOMPSON AND ASSOCIATES, INC.**  
ENGINEERS • PLANNERS • SURVEYORS  
3563 N.W. 53RD STREET, FORT LAUDERDALE, FLORIDA 33309  
FAX: (954) 739-6409 TEL: (954) 739-6400  
FLORIDA LICENSED ENGINEERING, SURVEYING & MAPPING BUSINESS NO. 271  
FLORIDA LICENSED LANDSCAPE ARCHITECTURE BUSINESS NO. 000014

**12TH STREET PARK RENOVATIONS**  
LOCATED AT NW 12TH STREET AND NW 58TH TERRACE SUNRISE, FL  
PREPARED FOR: CITY OF SUNRISE, FLORIDA

**PHOTOMETRICS PLAN**

SEAL	DATE: 06/29/16
Norman F. Bray Florida Reg No. LA 9978	DRAWING NO. <b>E-2</b> OF 3
PROJECT #: 15-0108	