

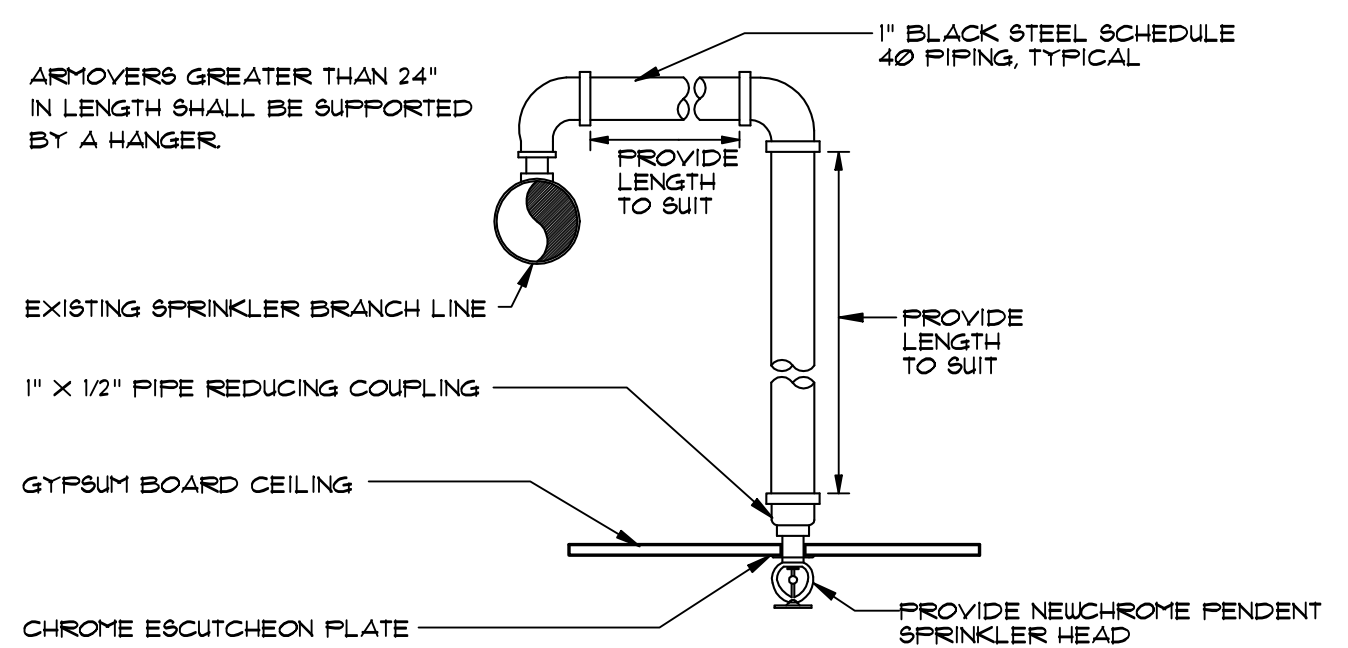
FIRE SPRINKLER SPECIFICATIONS

1. THE DRAWINGS ARE DIAGRAMMATIC AND REQUIRE COORDINATION WITH ARCHITECTURAL, AIR CONDITIONING AND ELECTRICAL PLANS.
2. THE CONTRACTOR SHALL SUBMIT SHOP DRAWINGS FOR THE ENGINEER'S REVIEW FOR ALL SPECIFIED MATERIALS AND EQUIPMENT PRIOR TO ORDERING OR INSTALLATION.
3. THE CONTRACTOR SHALL GUARANTEE ALL WORK AND INSTALLED SPRINKLER SYSTEMS FOR A PERIOD OF ONE YEAR FROM DATE OF "CERTIFICATE OF OCCUPANCY".
4. THIS BUILDING IS TOTALLY SPRINKLED PER NFPA 13 AND CONTAINS A STANDPIPE SYSTEM CONFORMING TO NFPA 14.
5. CONTRACTOR MAY SUBMIT AN ALTERNATE HYDRAULICALLY DESIGNED FIRE SPRINKLER SYSTEM, DESIGNED AND SIGNED AND SEALED BY AN OHIO REGISTERED PROFESSIONAL ENGINEER.
6. SUBMIT 6 SETS OF 1/4" SCALE DIMENSIONED SHOP DRAWINGS AND HYDRAULIC CALCULATIONS FOR THE ENGINEER'S REVIEW PRIOR TO ORDERING EQUIPMENT AND MATERIALS AND INSTALLING PIPING.
7. DESIGN DENSITY, HEAD TEMPERATURE AND SPACE CLASSIFICATION SHALL BE AS NOTED ON THE PLANS.
8. ALL VALVES SHALL BE "UL" FM LISTED VALVES WITH TAMPER SWITCHES 084Y CAST IRON BODY.
9. UNDERGROUND PIPING SHALL BE DUCTILE IRON PIPE. ALL ABOVE GROUND PIPING 2 1/2" AND LARGER SHALL BE SCHEDULE 40 BLACK STEEL WITH VICTAULIC FITTINGS. INTERIOR PIPE 2" AND SMALLER SHALL SCHEDULE 10 THIN WALL WITH VICTAULIC FITTINGS. ALL EXPOSED FIRE SPRINKLER PIPING AND FITTINGS, GARAGE AND EXTERIOR, SHALL BE GALVANIZED STEEL WITH (2) COATS OF EPOXY PAINT.
10. SPRINKLER PIPING SHALL BE PRESSURE TESTED AT 200 PSI FOR 24 HOURS.

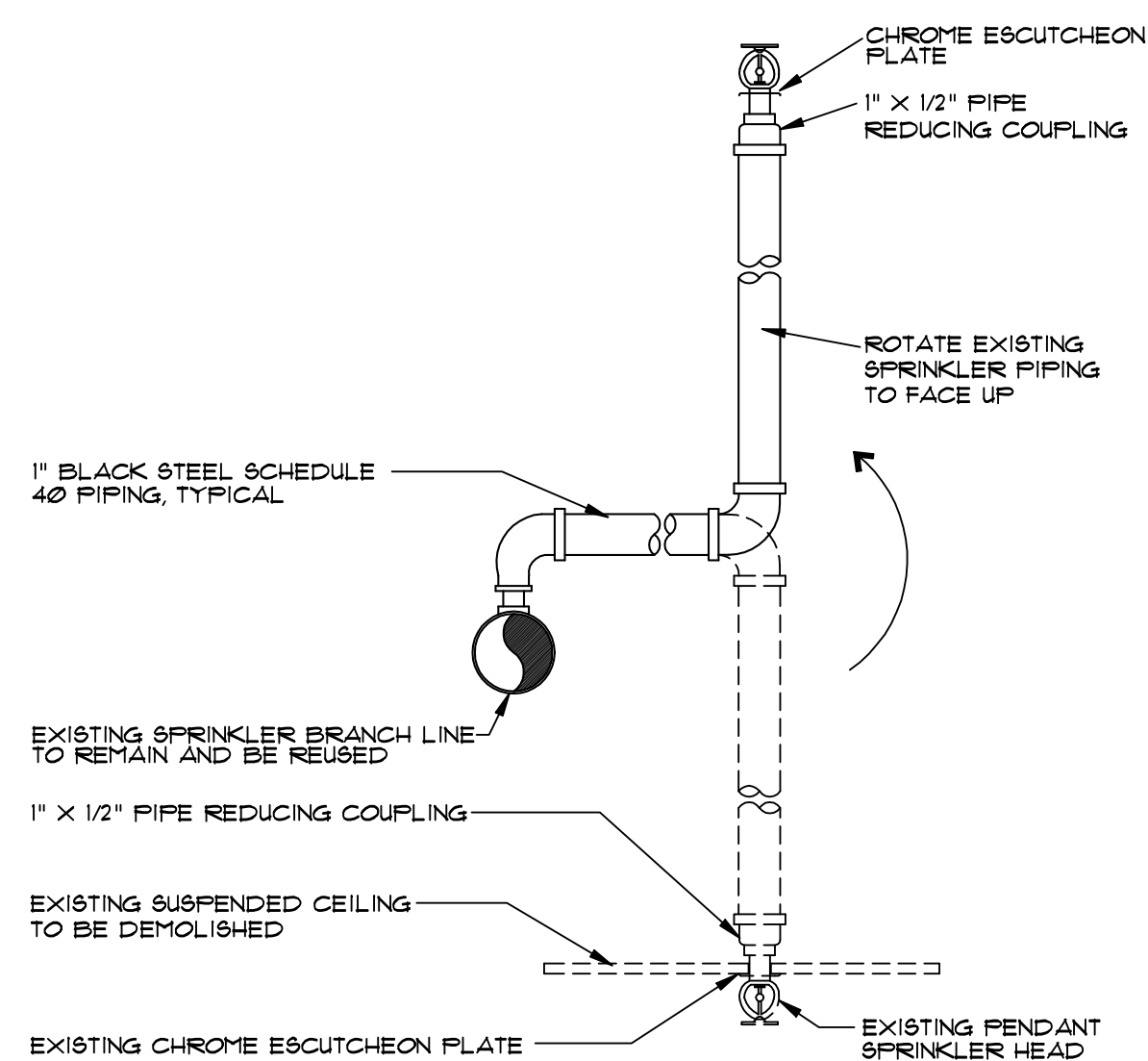
NOTE TO INSTALLING CONTRACTOR

INSTALLING CONTRACTOR SHALL PROVIDE OWNER WITH THE FOLLOWING: (1) ALL LITERATURE AND INSTRUCTIONS PROVIDED BY THE MANUFACTURER DESCRIBING PROPER OPERATION AND MAINTENANCE OF ANY EQUIPMENT AND DEVICES INSTALLED. (2) NFPA 25, STANDARD FOR THE INSPECTION, TESTING, AND MAINTENANCE OF WATER BASED FIRE PROTECTION SYSTEMS.

THE SPRINKLER SYSTEM SHALL BE BY A LICENSED CONTRACTOR UNDER A SEPARATE PERMIT, INCLUDING SHOP DRAWINGS AND CALCULATIONS.



- NOTES:**
1. ADJUST SPRINKLER DROPS AS NECESSARY TO CLEAR OBSTRUCTIONS SUCH AS THE CEILING, LIGHT FIXTURES, ETC. PROVIDE A PIPE HANGER IF THE HORIZONTAL OFFSET LENGTH EXCEEDS 24 INCHES.
 2. THIS SPRINKLER HEAD DROP IS APPLICABLE ONLY WHERE IT IS NOT NECESSARY TO RETAIN AN UPRIGHT SPRINKLER FOR PROTECTION OF COMBUSTIBLE CONSTRUCTION ABOVE THE CEILING.



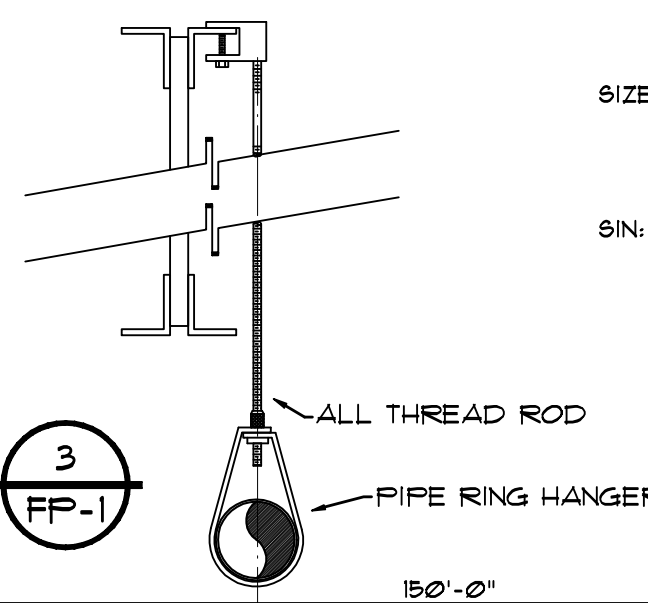
HEAD RELOCATION DETAILS

SCALE: NOT TO SCALE

4
FP-1

TOP BEAM CLAMP & ALL THREAD ROD SIZES

- FOR 1" THROUGH 4" PIPE SIZES
3/8" IS TO BE USED
- FOR 6" THROUGH 8" PIPE SIZES
1/2" IS TO BE USED

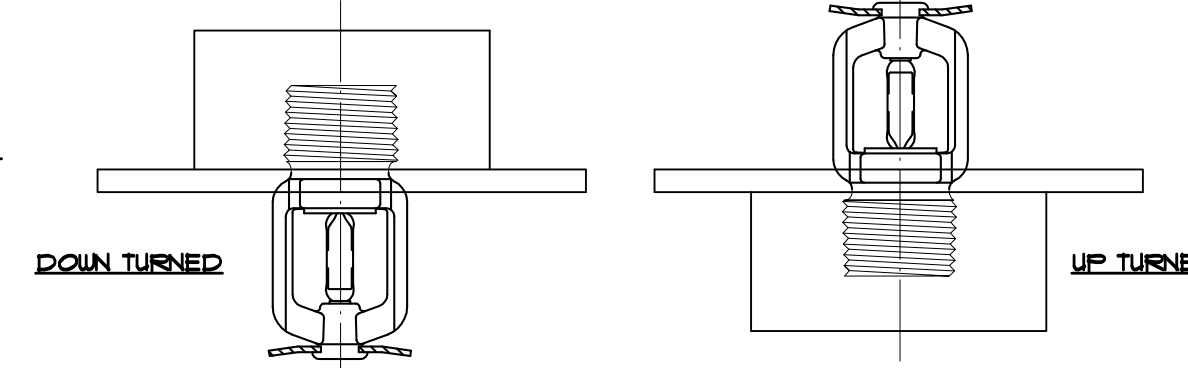


PIPE SUSPENSION DETAILS

SCALE: NOT TO SCALE

3
FP-1

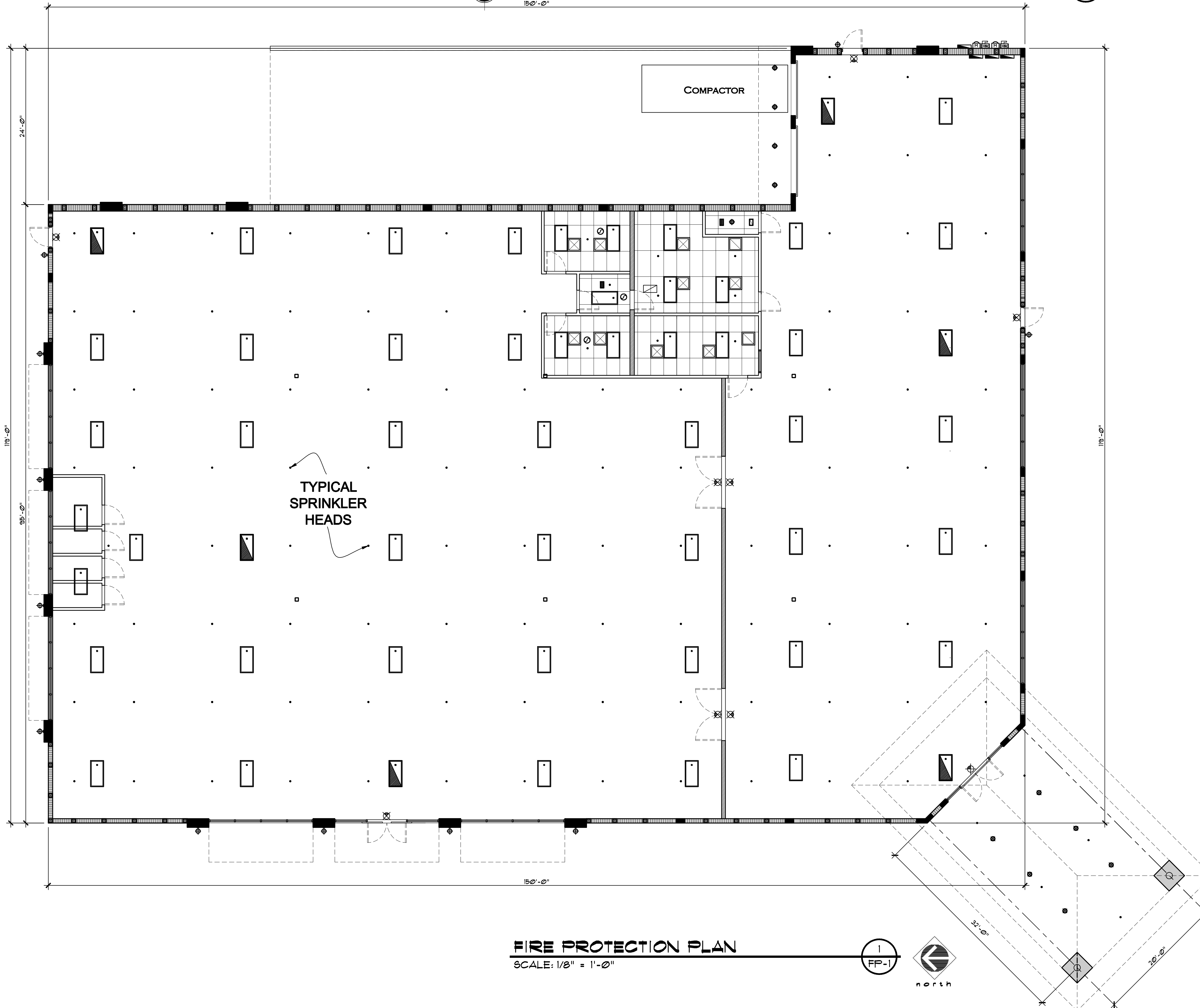
- SPRINKLERS / SPACING**
- 1/2"
K-VALUE: 5.6
TEMPERATURE: 155°
DESCRIPTION: TYCO "TY-FRB" CHROME PENDENT (TY323)
- MAXIMUM: 15' X 15'
MINIMUM: 6' X 6'



TYPICAL HEAD DETAIL

SCALE: NOT TO SCALE

2
FP-1



FIRE PROTECTION PLAN

SCALE: 1/8" = 1'-0"

1
FP-1



Revisions:

- 1
- 2
- 3
- 4
- 5

Project Number

160412

1066 U.S. HIGHWAY 1
NEW RETAIL BUILDING - GOODWILL

1066 U.S. HIGHWAY 1
VERO BEACH, FLORIDA

Project Name

NEW RETAIL BUILDING

STEPHEN BRASGALLA, ARCHITECT

STATE OF FLORIDA
REGISTRATION NO. AR12239

6901 WEST BROWARD BOULEVARD
SUITE 100
PLANTATION, FLORIDA 33317
TELEPHONE 954.614.3801
TELEFAX 954.208.0800
ARCHITECT © DESIGN23.NET

AS ISSUED FOR PERMIT 7-29-16 (NOT FOR CONSTRUCTION)

Drawn By: RSS
Checked By: STB

Scale: SHOWN
Date: 7-29-16

Project Number

160412

Sheet:

FP - 1