

# DOOR HRDWR. SCHED.

ENTRY VESTIBULE STOREFRONT DOUBLE DOORS (EXT.): 101-A STORE FRONT DOOR HINGES YALE T100 SERIES SQUARE BOLT PANIC BAR FULL BAR HANDLE 1" DIA MAX SECURITY CYLINDER WITH DEAD BOLT WITH THUMB TURN OPERATION ON INTERIOR SIDE CLOSER OVERHEAD SURFACE MOUNT WEATHER SEAL (PROVIDE COMPLETE SEAL) ADA COMPLIANT ALUMINUM THRESHOLD NOTE: PROVIDE MORE THAN ONE HEX KEY (A.K.A. PANIC DEVICE DOES KEY) FOR PANIC HARDWARE ** PROVIDE LOCKING MECHANISM TO ALLOW THE DOOR TO BE LOCKED FOR INCOMING TRAFFIC, BUT STILL ALLOWS EXITING TRAFFIC TO LEAVE WITHOUT THE DOOR HAVING TO BE UNLOCKED	RECEPTION DOORS (1/2 DOOR): 105-A, 105-B, 105-C 2 SPRING HINGES; HAGER 1150 4 1/2 X 4 1/2 X 26D SCHLAGE "D" SERIES "RHODES" PASSAGE LEVER WITH 626 FINISH 2 SILENCERS 30TD KICKPLATES 8 X 34 X 32D (ONE EA. SIDE) CONFERENCE / TRAINING DOOR: 116-A 3 HINGES HAGER BB 1214 4 1/2 X 4 1/2 X 26D SCHLAGE "D" SERIES "RHODES" PASSAGE LEVER WITH 626 FINISH 3 SILENCERS 30TD KICKPLATES 24 X 34 X 32D (ONE EA. SIDE) EXAM ROOM DOORS: 107-A, 108-A, 109-A 3 HINGES HAGER BB 1214 4 1/2 X 4 1/2 X 26D SCHLAGE "D" SERIES "RHODES" PASSAGE LEVER WITH 626 FINISH 3 SILENCERS 30TD KICKPLATES 8 X 34 X 32D (ONE EA. SIDE) CLOSET DOUBLE DOORS: 132-A 6 HINGES HAGER BB 1214 4 1/2 X 4 1/2 X 26D SCHLAGE "D" SERIES "RHODES" PASSAGE LEVER WITH 626 FINISH 6 SILENCERS 30TD YALE CLOSER 3301BF X 5NB X 5B ARMOR PLATE, HAGER, 1445 30XX, 32D (ONE EA. SIDE) EMPLOYEE HALL DOUBLE DOOR: 114-A 2 HINGES HAGER BB 1214 4 1/2 X 4 1/2 X 26D SCHLAGE "D" SERIES "RHODES" PASSAGE LEVER WITH 626 FINISH 2 SILENCERS 30TD YALE CLOSER 3301BF X 5NB X 5B ARMOR PLATE, HAGER, 1445 30XX, 32D (ONE EA. SIDE) SUPPLIES, STERILE SUPPLIES & SHIPPING DOUBLE DOORS: 127-A, 128-A, 129-A 6 HINGES HAGER BB 1214 4 1/2 X 4 1/2 X 26D SCHLAGE "D" SERIES "RHODES" ENTRANCE LEVER WITH 626 FINISH 6 YALE CLOSER 3301BF X 5NB X 5B SILENCERS 30TD ARMOR PLATE, HAGER, 1445 30XX, 32D (ONE EA. SIDE) HAGER 270C KICKDOWN DOOR HOLDER OFFICE DOORS: 111-A, 112-A, 113-A, 115-A 3 HINGES HAGER BB 1214 4 1/2 X 4 1/2 X 26D SCHLAGE "D" SERIES "RHODES" ENTRANCE LEVER WITH 626 FINISH 3 YALE CLOSER 3301BF X 5NB X 5B SILENCERS 30TD KICKPLATES 8 X 34 X 32D (ONE EA. SIDE) I.T. / ELECTRICAL DOORS: 123-A, 124-A 3 HINGES HAGER BB 1214 4 1/2 X 4 1/2 X 26D SCHLAGE "D" SERIES "RHODES" ENTRANCE LEVER WITH 626 FINISH 3 YALE CLOSER 3301BF X 5NB X 5B SILENCERS 30TD ARMOR PLATE, HAGER, 1445 30XX, 32D (ONE EA. SIDE) JANITOR & BIO-WASTE (INT.) DOOR: 121-A, 122-B 3 HINGES HAGER BB 1214 4 1/2 X 4 1/2 X 26D SCHLAGE "D" SERIES "RHODES" ENTRANCE LEVER WITH 626 FINISH 3 SILENCERS 30TD YALE CLOSER 3301BF X 5NB X 5B ARMOR PLATE, HAGER, 1445 30XX, 32D (ONE EA. SIDE) EQUIP. REPAIR DOOR: 131-A 3 HINGES HAGER BB 1214 4 1/2 X 4 1/2 X 26D SCHLAGE "D" SERIES "RHODES" PASSAGE LEVER WITH 626 FINISH 3 SILENCERS 30TD YALE CLOSER 3301BF X 5NB X 5B ARMOR PLATE, HAGER, 1445 30XX, 32D (ONE EA. SIDE)
BIO-WASTE SINGLE DOOR (EXT.): 122-A 4 HINGES HAGER BB 1214 4 1/2 X 4 1/2 X 26D SCHLAGE "D" SERIES "RHODES" ENTRANCE LEVER WITH 626 FINISH 4 WEATHER SEAL (PROVIDE COMPLETE SEAL - NO LIGHT GAP) ALUMINUM THRESHOLD YALE CLOSER 3301BF X 5NB X 5B ARMOR PLATE, HAGER, 1445 30XX, 32D HAGER 270C KICKDOWN DOOR HOLDER PEEP VIEWER 2" PEEP VIEWER, ORDER FROM KVAPEEHOSECURITY.COM- PRODUCT #60M32 CLOSER OVERHEAD SURFACE MOUNT	RECEIVING/ DELIVERY DOUBLE DOORS (EXT.): 118-A 6 HINGES HAGER BB 1214 4 1/2 X 4 1/2 X 26D SCHLAGE "D" SERIES "RHODES" ENTRANCE LEVER WITH 626 FINISH 6 PANIC EXIT DEVICE (PUSH BAR) WEATHER SEAL (PROVIDE COMPLETE SEAL - NO LIGHT GAP) ALUMINUM THRESHOLD YALE CLOSER 3301BF X 5NB X 5B 2" PEEP VIEWER, ORDER FROM KVAPEEHOSECURITY.COM- PRODUCT #60M32 ARMOR PLATE, HAGER, 1445 30XX, 32D HAGER 270C KICKDOWN DOOR HOLDER
SPRINKLER SINGLE DOOR (EXT.): 133-A 3 HINGES HAGER BB 1214 4 1/2 X 4 1/2 X 26D SCHLAGE "D" SERIES "RHODES" ENTRANCE LEVER WITH 626 FINISH 3 YALE T100 SERIES SQUARE BOLT PANIC BAR WEATHER SEAL (PROVIDE COMPLETE SEAL - NO LIGHT GAP) ALUMINUM THRESHOLD YALE CLOSER 3301BF X 5NB X 5B 2" PEEP VIEWER, ORDER FROM KVAPEEHOSECURITY.COM- PRODUCT #60M32 ARMOR PLATE, HAGER, 1445 30XX, 32D HAGER 270C KICKDOWN DOOR HOLDER	DONOR EXIT STOREFRONT SINGLE DOOR (INT.): 114-B 3 STORE FRONT DOOR HINGES PUSH / FULL BAR WEATHER SEAL (PROVIDE COMPLETE SEAL) YALE CLOSER 3301BF X 5NB X 5B
FUTURE OFFICE SPACE DOOR: 134-A 3 HINGES HAGER BB 1214 4 1/2 X 4 1/2 X 26D SCHLAGE "D" SERIES "RHODES" PASSAGE LEVER WITH 626 FINISH 3 SILENCERS 30TD YALE CLOSER 3301BF X 5NB X 5B ARMOR PLATE, HAGER, 1445 30XX, 32D (ONE EA. SIDE)	DONOR RESTROOM DOORS (MULTIPLE STALL): 102-A, 103-A, 104-A 3 HINGES HAGER BB 1214 4 1/2 X 4 1/2 X 26D PUSH / FULL BAR (ONE EA. SIDE) YALE CLOSER 3301BF X 5NB X 5B KICKPLATES 24 X 34 X 32D (ONE EA. SIDE)
EMPLOYEE RESTROOM DOORS (MULTIPLE STALL): 125-A, 126-A 3 HINGES HAGER BB 1214 4 1/2 X 4 1/2 X 26D KICKPLATES 24 X 34 X 32D (ONE EA. SIDE)	GENERAL DOOR HARDWARE NOTES: 1. PROVIDE AND INSTALL A HEAVY DUTY FLOOR DOOR STOP ON ALL DOORS, HAGER FLOOR STOP 241F X 26D 2. PROVIDE FIRE RATED HARDWARE INCLUDING CLOSER TO ALL FIRE RATED DOORS. 3. KEYING: PROVIDE OWNER WITH A MASTER KEY FOR ALL LOCKS. (10 COPIES)

# DOOR SCHEDULE

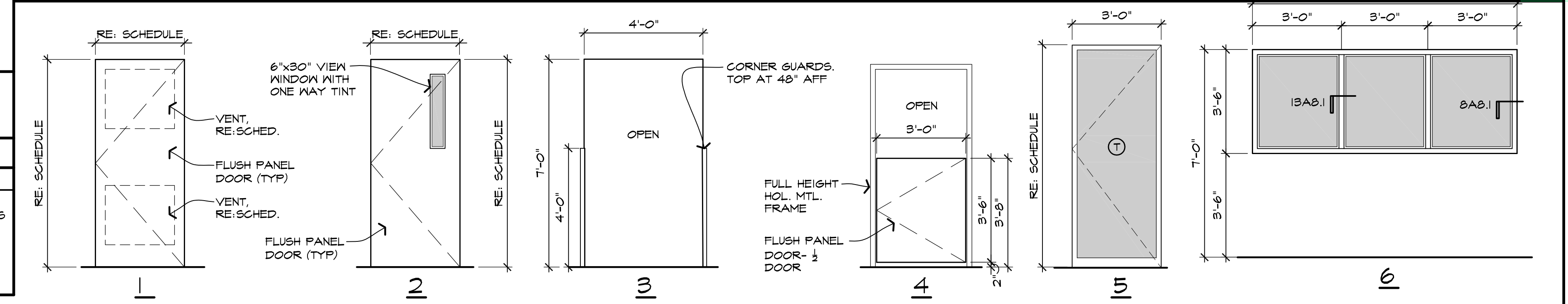
DOOR	TYPE	WID.	HT.	THK.	MATERIAL	FRAME	HEAD	JAMB	THRSHLD.	LABEL	REMARKS
101-A	5 (FR)	6'-0"	7'-0"	-	ALUM / GLASS	ALUM	-	-	20AB.1		PR. EXISTING STOREFRONT DOOR
102-A	1	3'-0"	7'-0"	1-3/4"	S.C. WD., PTD.	H.M. PTD.	4AB.1	9AB.1	-		INTERIOR FLUSH PANEL DOOR
103-A	1	3'-0"	7'-0"	1-3/4"	S.C. WD., PTD.	H.M. PTD.	4AB.1	9AB.1	-		INTERIOR FLUSH PANEL DOOR
105-A	4	3'-0"	3'-6"	1-3/4"	S.C. WD., PTD.	H.M. PTD.	-	9AB.1	-		INTERIOR FLUSH PANEL DOOR 1/2 SIZE
105-B	4	3'-0"	3'-6"	1-3/4"	S.C. WD., PTD.	H.M. PTD.	-	9AB.1	-		INTERIOR FLUSH PANEL DOOR 1/2 SIZE
105-C	4	3'-0"	3'-6"	1-3/4"	S.C. WD., PTD.	H.M. PTD.	-	9AB.1	-		INTERIOR FLUSH PANEL DOOR 1/2 SIZE
107-A	1	3'-0"	7'-0"	1-3/4"	S.C. WD., PTD.	H.M. PTD.	4AB.1	9AB.1	-		INTERIOR FLUSH PANEL DOOR
108-A	1	3'-0"	7'-0"	1-3/4"	S.C. WD., PTD.	H.M. PTD.	4AB.1	9AB.1	-		INTERIOR FLUSH PANEL DOOR
109-A	1	3'-0"	7'-0"	1-3/4"	S.C. WD., PTD.	H.M. PTD.	4AB.1	9AB.1	-		INTERIOR FLUSH PANEL DOOR
111-A	2	3'-0"	7'-0"	1-3/4"	S.C. WD., PTD.	H.M. PTD.	4AB.1	9AB.1	-		INT. FLUSH PANEL DOOR, VIEW WINDOW
112-A	2	3'-0"	7'-0"	1-3/4"	S.C. WD., PTD.	H.M. PTD.	4AB.1	9AB.1	-		INT. FLUSH PANEL DOOR, VIEW WINDOW
113-A	2	3'-0"	7'-0"	1-3/4"	S.C. WD., PTD.	H.M. PTD.	4AB.1	9AB.1	-		INT. FLUSH PANEL DOOR, VIEW WINDOW
114-A	2 (FR)	6'-0"	8'-0"	1-3/4"	S.C. WD., PTD.	H.M. PTD.	4AB.1	9AB.1	-		PR. INT. FLUSH PANEL DOOR, VIEW WINDOW
114-B	5	3'-0"	7'-0"	-	ALUM / GLASS	ALUM	-	-	-		INT. STOREFRONT DOOR
115-A	2	3'-0"	7'-0"	1-3/4"	S.C. WD., PTD.	H.M. PTD.	4AB.1	9AB.1	-		INT. FLUSH PANEL DOOR, VIEW WINDOW
116-A	2	3'-0"	7'-0"	1-3/4"	S.C. WD., PTD.	H.M. PTD.	4AB.1	9AB.1	-		INT. FLUSH PANEL DOOR, VIEW WINDOW
117-A	3	4'-0"	7'-0"	-	-	-	5AB.1	10AB.1	-		6/8B RETURN, OPENING
118-A	1 (FR)	3'-0"	8'-0"	1-3/4"	H.M. INSUL., PTD.	H.M. PTD.	4AB.1	9AB.1	-		EXTERIOR FLUSH PANEL DOOR
121-A	1	6'-0"	7'-0"	1-3/4"	S.C. WD., PTD.	H.M. PTD.	4AB.1	9AB.1	-	45 MIN.	INT. FLUSH PANEL DOOR, WITH SMOKE SEAL
122-A	1	4'-0"	8'-0"	1-3/4"	H.M. INSUL., PTD.	H.M. PTD.	2AB.1	7AB.1	20AB.1		EXTERIOR FLUSH PANEL DOOR
122-B	1	3'-0"	7'-0"	1-3/4"	S.C. WD., PTD.	H.M. PTD.	4AB.1	9AB.1	-		INT. FLUSH PANEL DOOR, WITH VENTS
123-A	1	3'-0"	7'-0"	1-3/4"	S.C. WD., PTD.	H.M. PTD.	4AB.1	9AB.1	-		INT. FLUSH PANEL DOOR
124-A	1	3'-0"	7'-0"	1-3/4"	S.C. WD., PTD.	H.M. PTD.	4AB.1	9AB.1	-		INT. FLUSH PANEL DOOR
125-A	1	3'-0"	7'-0"	1-3/4"	S.C. WD., PTD.	H.M. PTD.	4AB.1	9AB.1	-		INTERIOR FLUSH PANEL DOOR
126-A	1	3'-0"	7'-0"	1-3/4"	S.C. WD., PTD.	H.M. PTD.	4AB.1	9AB.1	-		INTERIOR FLUSH PANEL DOOR
127-A	1 (FR)	6'-0"	8'-0"	1-3/4"	S.C. WD., PTD.	H.M. PTD.	4AB.1	9AB.1	-		PR. INT. FLUSH PANEL DOOR
128-A	2 (FR)	6'-0"	8'-0"	1-3/4"	S.C. WD., PTD.	H.M. PTD.	4AB.1	9AB.1	-		PR. INT. FLUSH PANEL DOOR, VIEW WINDOW
129-A	2 (FR)	6'-0"	8'-0"	1-3/4"	S.C. WD., PTD.	H.M. PTD.	4AB.1	9AB.1	-		PR. INT. FLUSH PANEL DOOR, VIEW WINDOW
131-A	2	3'-0"	7'-0"	1-3/4"	S.C. WD., PTD.	H.M. PTD.	4AB.1	9AB.1	-		INT. FLUSH PANEL DOOR, VIEW WINDOW
132-A	1 (FR)	6'-0"	7'-0"	1-3/4"	S.C. WD., PTD.	H.M. PTD.	4AB.1	9AB.1	-		INT. FLUSH PANEL DOOR
133-A	1	3'-0"	7'-0"	1-3/4"	H.M. INSUL., PTD.	H.M. PTD.	4AB.1	9AB.1	-		EXTERIOR FLUSH PANEL DOOR
134-A	1	3'-0"	7'-0"	1-3/4"	S.C. WD., PTD.	H.M. PTD.	4AB.1	9AB.1	-		INTERIOR FLUSH PANEL DOOR

- NOTE:  
1. ALL INTERIOR WOOD DOORS SHALL BE SOLID CORE WOOD DOORS, PAINTED.  
2. ALL EXTERIOR H.M. DOORS AND FRAMES SHALL BE EXTERIOR GRADE, GALVANIZED AND PAINTED.

# WINDOW SCHEDULE

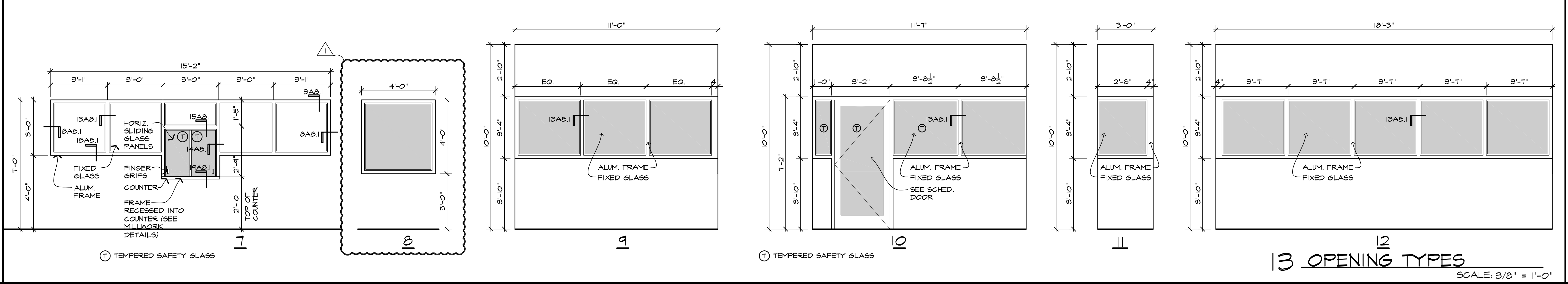
WINDOW TYPE	WID.	HT.	FRAME	GLAZING	HEAD	JAMB	SILL	REMARKS
101-A	8	4'-0"	4'-0"	ALUM.	1" INSUL., LOW-E TINTED	-	-	STOREFRONT WINDOW SYSTEM
101-B	8	4'-0"	4'-0"	ALUM.	1" INSUL., LOW-E TINTED	-	-	STOREFRONT WINDOW SYSTEM
101-C	8	4'-0"	4'-0"	ALUM.	1" INSUL., LOW-E TINTED	-	-	STOREFRONT WINDOW SYSTEM
101-D	8	11'-0"	3'-4"	ALUM.	1/4" CLEAR	3AB.1	RE.ELEV.	STOREFRONT WINDOW SYSTEM
101-E	11	3'-0"	7'-0"	ALUM.	1/4" CLEAR	3AB.1	RE.ELEV.	STOREFRONT WINDOW SYSTEM
111-A	6	3'-0"	3'-6"	ALUM.	1/4" CLEAR	3AB.1	RE.ELEV.	STOREFRONT WINDOW SYSTEM
113-A	6	3'-0"	3'-6"	ALUM.	1/4" CLEAR	3AB.1	RE.ELEV.	STOREFRONT WINDOW SYSTEM
114-A	10	11'-7"	3'-4"	ALUM.	1/4" CLEAR	3AB.1	RE.ELEV.	STOREFRONT WINDOW SYSTEM
114-B	11	3'-0"	3'-4"	ALUM.	1/4" CLEAR	3AB.1	RE.ELEV.	STOREFRONT WINDOW SYSTEM
114-C	12	18'-3"	3'-4"	ALUM.	1/4" CLEAR	3AB.1	RE.ELEV.	STOREFRONT WINDOW SYSTEM
130-A	7	15'-2"	3'-0"	ALUM.	1/4" CLEAR	RE.ELEV.	RE.ELEV.	STOREFRONT WINDOW SYSTEM W/ (2) INTEGRAL SLIDING GLASS UNITS

- NOTE:  
1. ALL INTERIOR OFFICE WINDOWS SHALL BE TINTED WITH ONE WAY REFLECTIVE TINTING.  
2. ALL WINDOWS WITHIN 24" OR LESS OF ANY DOOR WITHIN SAME OR ADJACENT WALL WILL REQUIRE TEMPERED SAFETY GLASS.



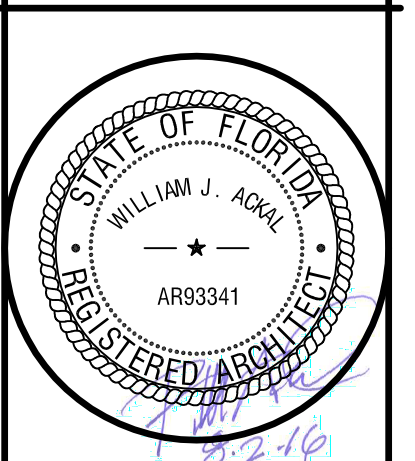
# ROOM SIGNAGE SCHEDULE

DOOR	COPY	FONT/GRAPHICS
101-A, 118-B, 132-B	EXIT	5/8" HIGH, STANDARD MEDIUM / BRAILLE DOTS / HC300D
102-A, 126-A	WOMEN	5/8" STANDARD MEDIUM / HC AND FEMALE INTERNATIONAL SYMBOL / BRAILLE DOTS / HC300A
103-B, 125-A	MEN	5/8" STANDARD MEDIUM / HC AND MALE INTERNATIONAL SYMBOL / BRAILLE DOTS / HC300A



**ACKAL** A PROFESSIONAL CORPORATION  
 ARCHITECTS  
 105 CHAPEL DRIVE - LAFAYETTE, LOUISIANA 70506  
 337-988-5271 ph. - 337-988-5272 fax  
 www.ackalarchitects.com

INTERIOR TENANT IMPROVEMENT FOR:  
**IMMUNOTEK BIO CENTERS, LLC**  
 4560 LAKE WORTH ROAD  
 OFFICE DEPOT PLAZA, SUITE B-5  
 LAKE WORTH, PALM BEACH COUNTY, FL 33463



COPYRIGHT © 2016 ACKAL ARCHITECTS, APC.  
 THIS DOCUMENT IS THE PROPERTY OF ACKAL ARCHITECTS, APC.  
 THIS DOCUMENT MAY NOT BE COPIED, REPRODUCED OR USED WITHOUT WRITTEN CONSENT FROM ACKAL ARCHITECTS, APC.  
 proj. no. 16-002  
 date: 08-02-2016  
 project architect: B.A.  
 project manager: A.D.  
 drawn by: A.D., J.L., C.T.  
 The name of the client is:  
 revised: 11-22-16  
 plot scale: 1/1  
 sheet name:  
 DOOR SCHEDULE / HRDWR. SCHEDULE / OPENING TYPES  
 sheet no.  
**RA5.2**  
 10 of 42  
 SCALE: 3/8" = 1'-0"