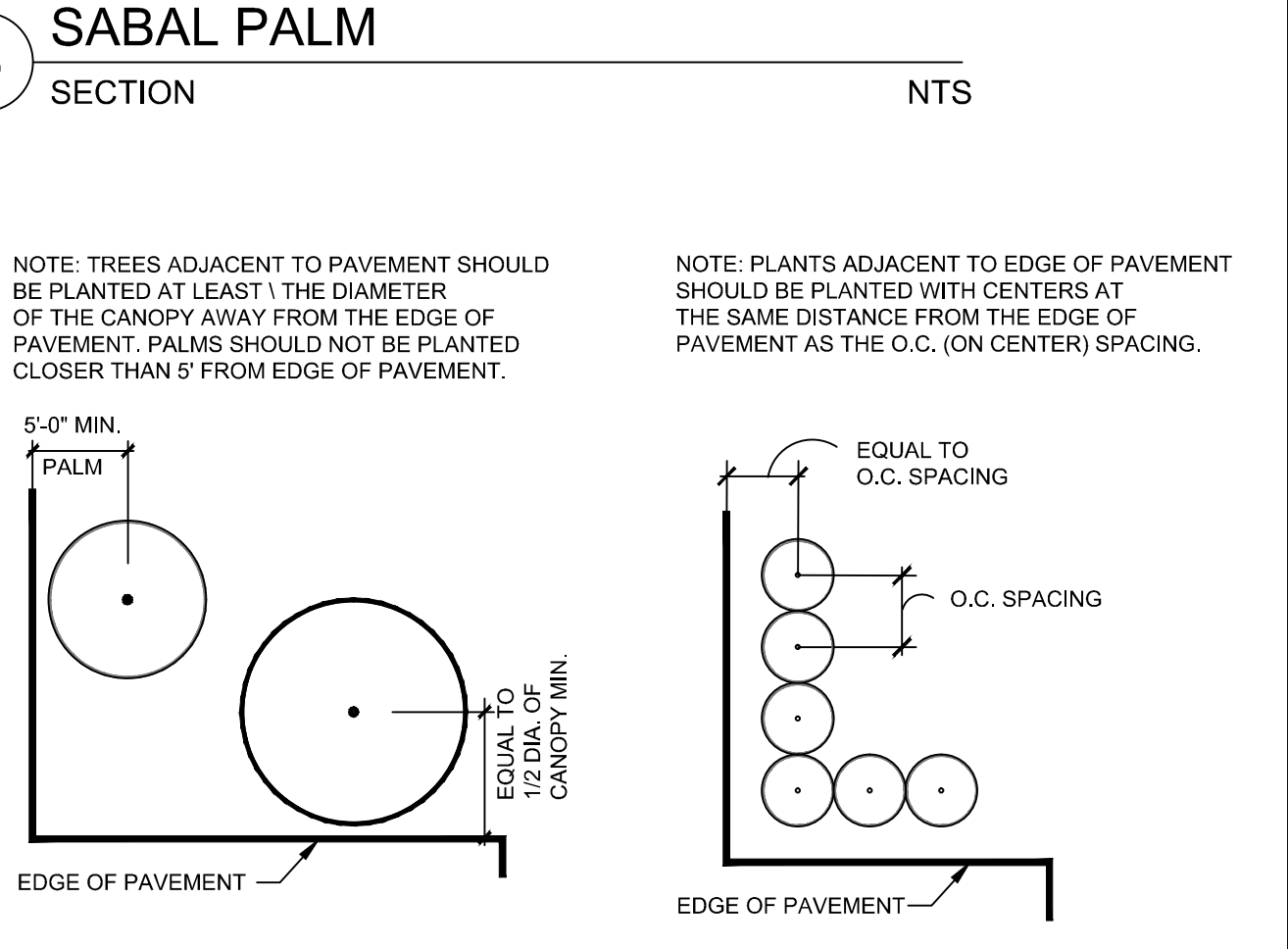
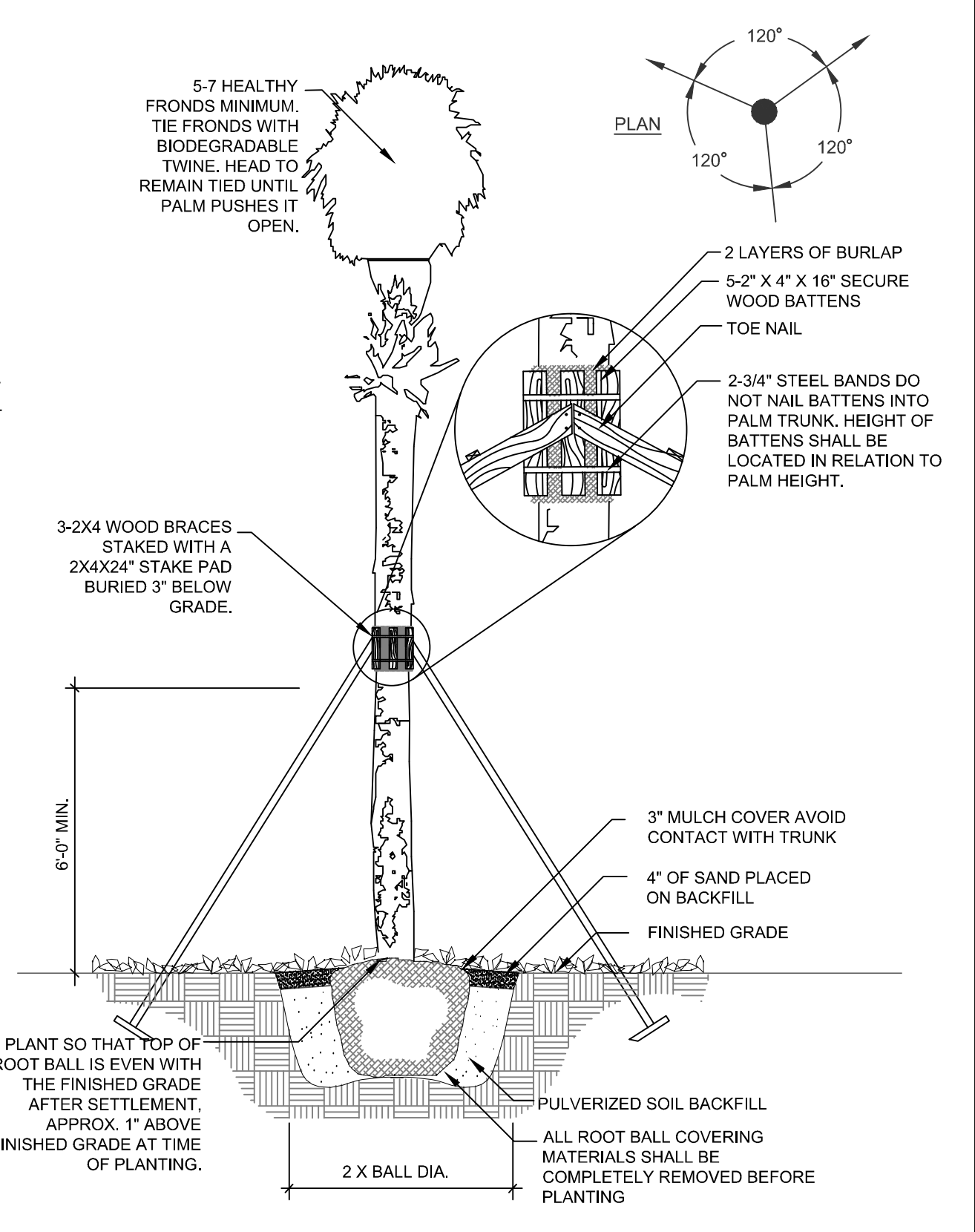
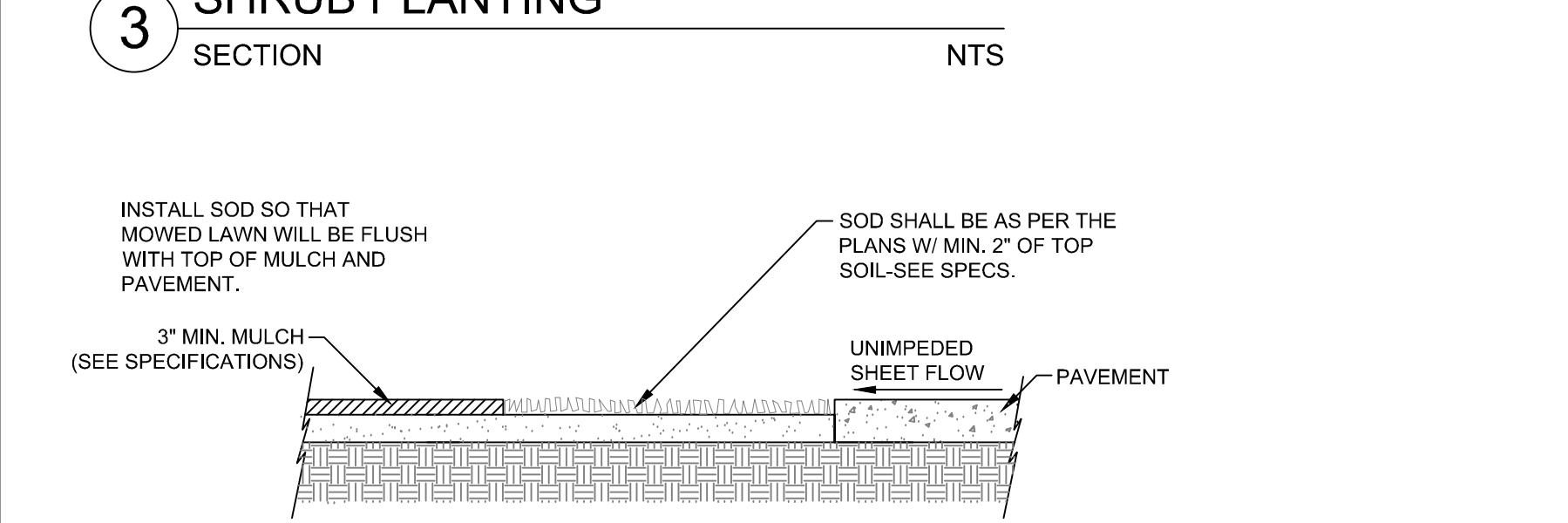
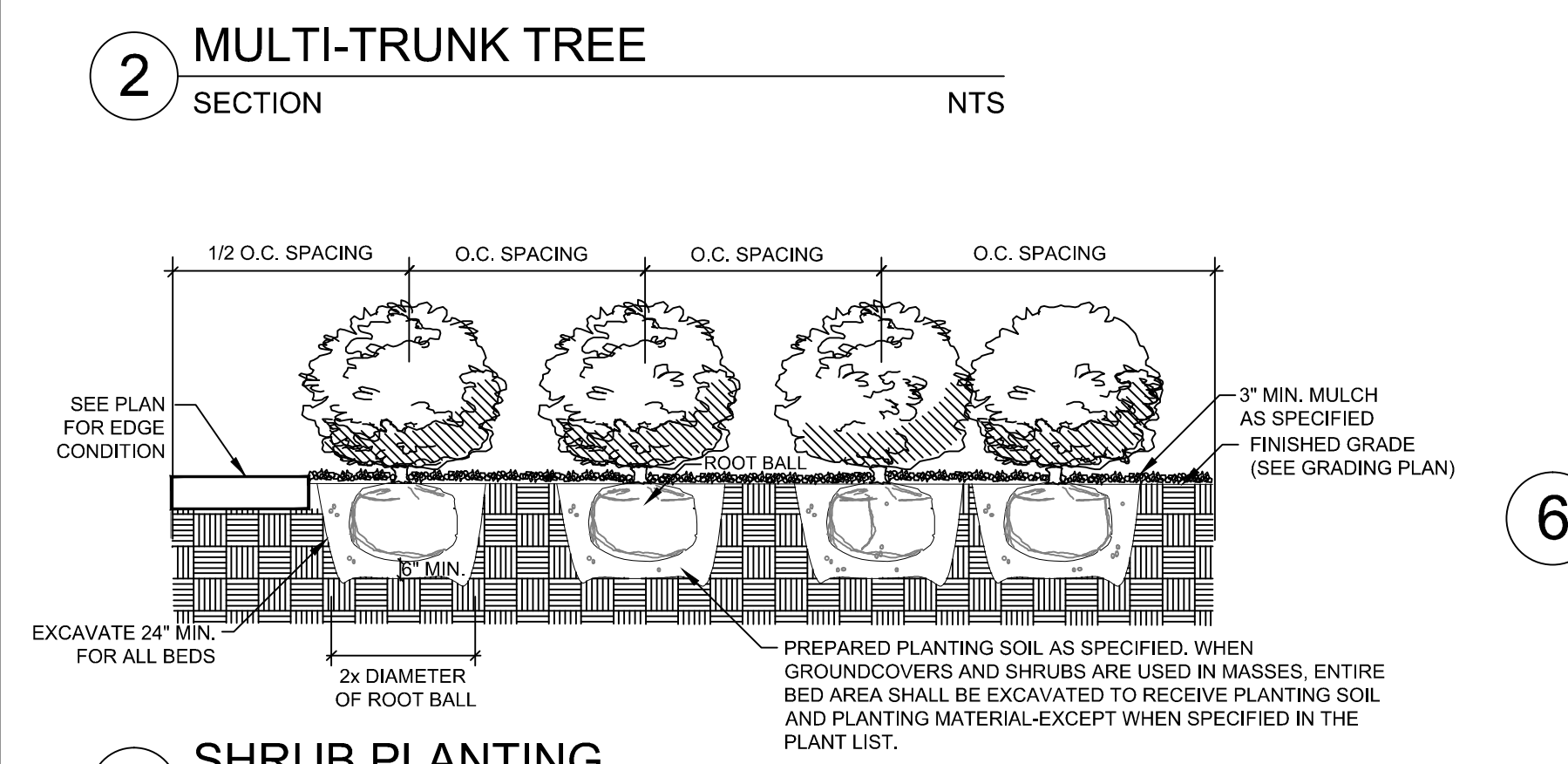
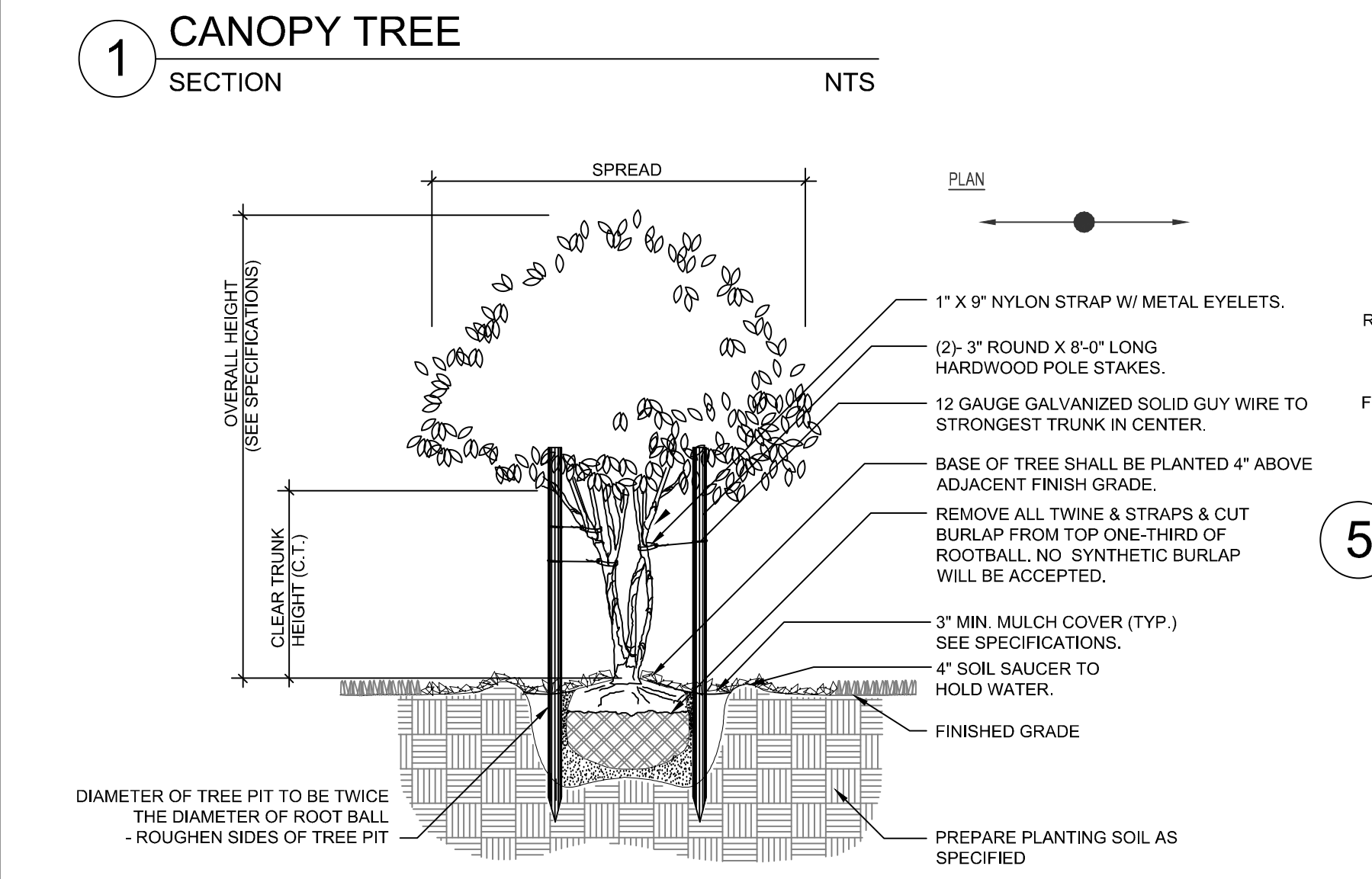
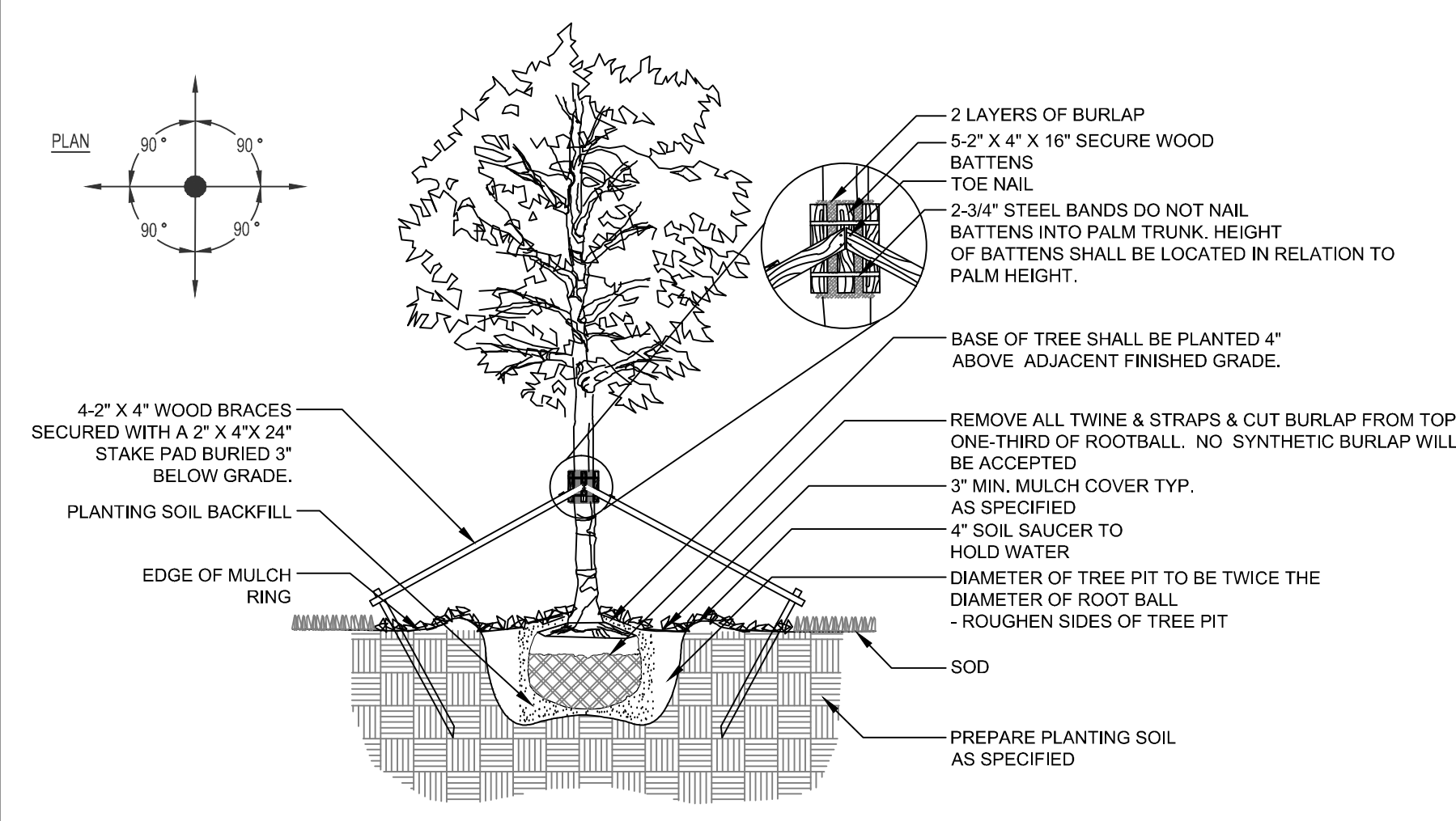
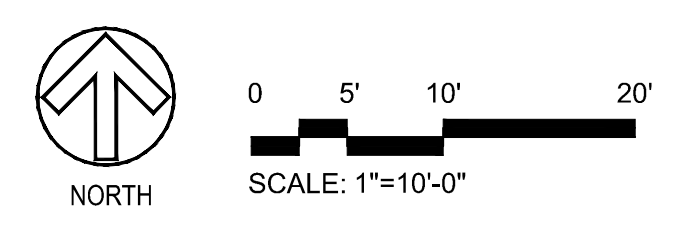
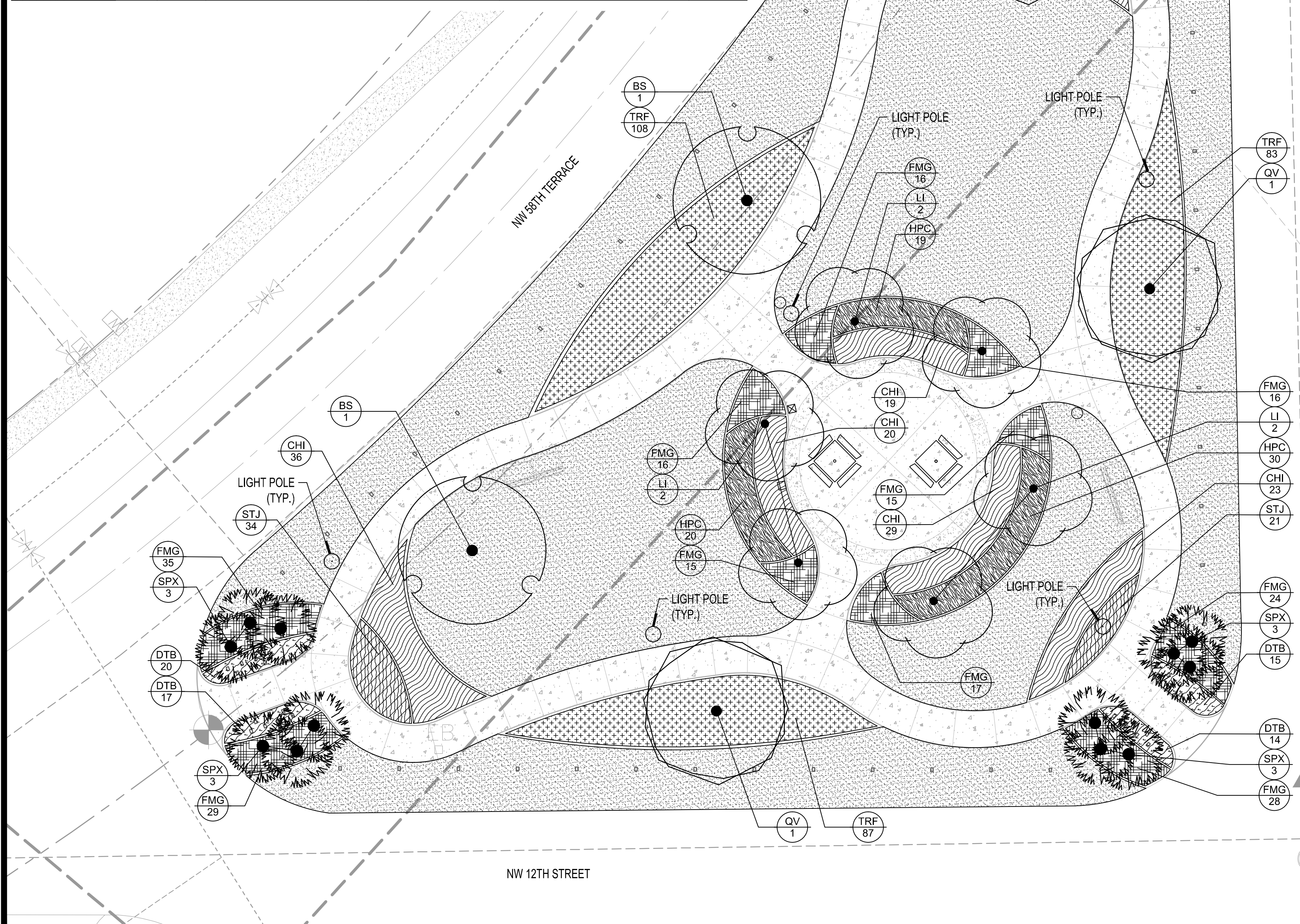


PLANT SCHEDULE

TREES	CODE	QTY	BOTANICAL NAME	COMMON NAME	SPECIFICATION	
	BS	2	Bursera Simaruba	Gumbo Limbo	3" Cal, 14' Ht. x 6' Spread	
	LI	6	Lagerstroemia indica	Crape Myrtle	2.5" cal, 12' ht. x 6' spread, multi trunk	
	QV	3	Quercus virginiana 'Highrise'	Highrise Live Oak	3" Cal, 14' Ht. x 6' Spread	
PALM TREES	CODE	QTY	BOTANICAL NAME	COMMON NAME	SPECIFICATION	
	SPX	18	Sabal palmetto	Sabal Palm	12" DBH, 12-15' OA HT-STAGGERED	
SHRUB AREAS	CODE	QTY	BOTANICAL NAME	COMMON NAME	SPECIFICATIONS	SPACING
	CHI	182	Chrysobalanus icaco 'horizontal'	Horizontal Cocoplum	18" HT X 18" SPRD.	24" o.c.
	DTB	111	Dianella tasmanica 'Blushy'	Variegated Flax Lily	12" HT. X 12" SPRD.	18" o.c.
	FMG	279	Ficus microcarpa 'Green Island'	Green Island Ficus	12" HT. X 12" SPRD.	18" o.c.
	HPC	69	Hamelia patens 'Compacta'	Dwarf Scarlet Bush	18" HT X 18" SPRD.	24" o.c.
	STJ	120	Stachytarpheta jamaicensis	Native Porter	12" HT. X 12" SPRD.	18" o.c.
	TRF	278	Tripsacum floridanum	Dwarf Fakahatchee Grass	18" HT X 18" SPRD.	24" o.c.
GROUND COVERS	CODE	QTY	BOTANICAL NAME	COMMON NAME	SPECIFICATIONS	SPACING
	SOD	6,724 sf	Stenotaphrum secundatum	St. Augustine Grass	sod	



DATE:	
SCALE:	
DESIGNED BY:	DJS
DRAWN BY:	DJS
CHECKED BY:	DJS
APPROVED BY:	JDH

CRAVEN THOMPSON AND ASSOCIATES, INC.
 ENGINEERS • PLANNERS • SURVEYORS
 3563 N.W. 53RD STREET, FORT LAUDERDALE, FLORIDA 33309
 FAX: (954) 739-6409 TEL: (954) 739-6400
 FLORIDA LICENSED ENGINEERING, SURVEYING & MAPPING BUSINESS NO. 271
 FLORIDA LICENSED LANDSCAPE ARCHITECTURE BUSINESS NO. 0000114

12TH STREET PARK RENOVATIONS
 LOCATED AT NW 12TH STREET AND NW 58TH TERRACE SUNRISE, FL
 PREPARED FOR: CITY OF SUNRISE, FLORIDA

LANDSCAPE PLAN

SEAL	DATE:
	07/06/16
Douglas James Schultz	DRAWING NO.
Florida RLA No. LA 6666937	LA-1
PROJECT #:	
15-0108	