

MEMBER:
AMERICAN
INSTITUTE OF
ARCHITECTS
AA26001907

DeMELLO
ARCHITECTURE
911 Southwest 18 Street, Boca Raton, Florida 33486
954 671 0203 Fax 954 418 0022

All ideas and designs indicated or referred to in this drawing are the property of DeMello Architecture and were created and developed for use in connection with the specific project. None of such ideas and designs shall be used by or disclosed to any person or corporation for any purpose whatsoever without written permission of this office.

SECOND FLOOR ADDITION FOR
DIXIE DIVERS
455 U.S. HIGHWAY #1
DEERFIELD BEACH, FL.

drawing name:

revisions

designed	H. DeMello
drawn	H. DeMello
date	AUG. 21, 2015
scale	AS SHOWN
project #	15.138
sheet	

designed H. DeMello
drawn H. DeMello
date AUG. 21, 2015
scale AS SHOWN
project # 15.138
sheet

M-1

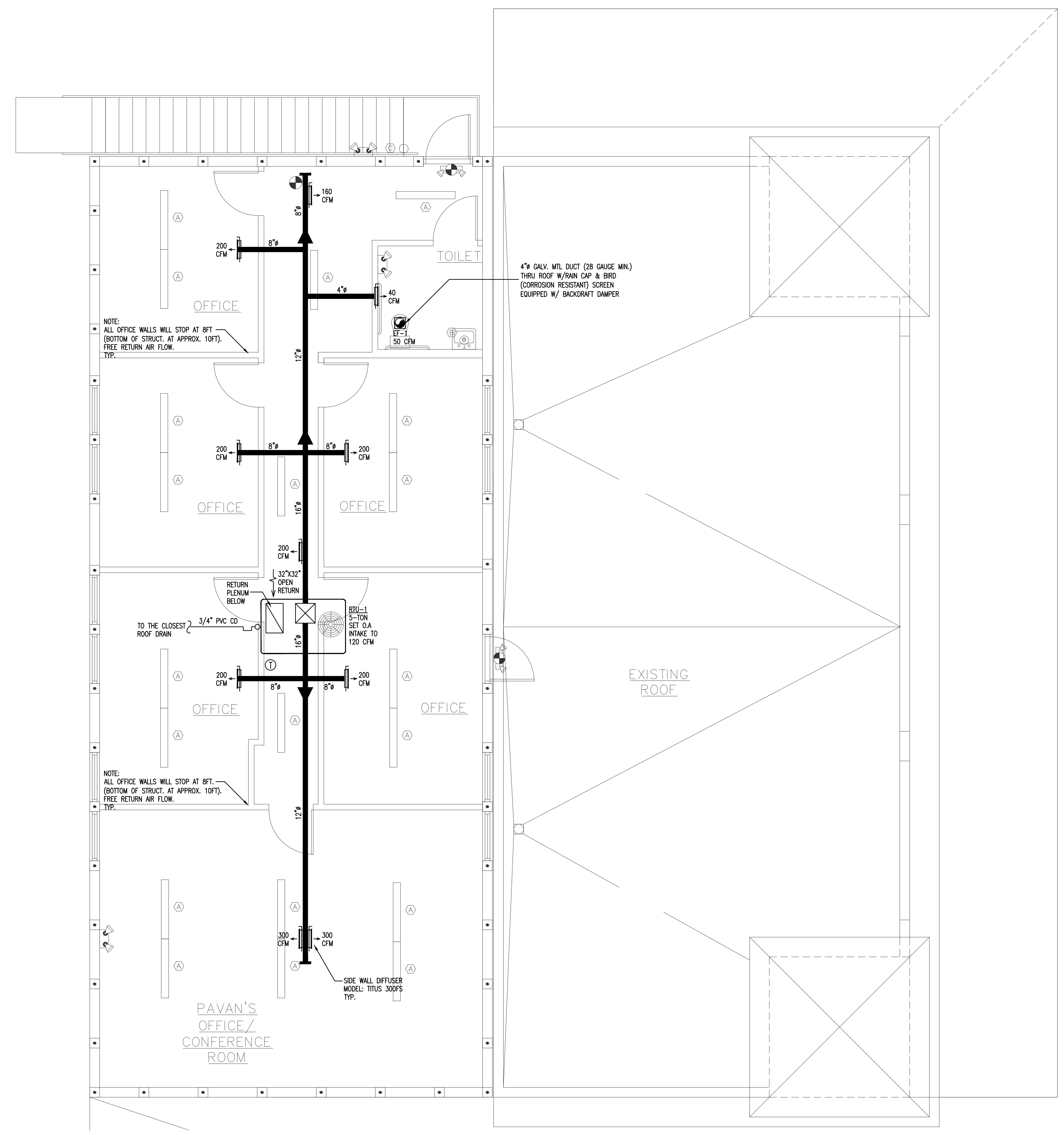
MECHANICAL LEGEND	
(S)	SMOKE DETECTOR
(T)	PROGRAMMABLE THERMOSTAT
TEST	TESTER
MV	MANUAL VOLUME DAMPER (MVD)
FD	FIRE DAMPER
SA	SUPPLY AIR DIFFUSER
RA	RETURN AIR DIFFUSER
LxW	SPIRAL METAL DUCT INS. R-4.2
FLEX	FLEX DUCT R-6
EF	EXHAUST FAN
OA	OUTSIDE AIR
RTU	ROOF TOP UNIT
CFM	CUBIC FEET PER MINUTE
▶	DUCT SIZE REDUCED

Manufacturer	TRANE OR EQUAL
Model Number	THC067
Nominal Tons	5.0
Total Capacity (MBH)	60.0
Sensible Capacity (MBH)	45.3
CFM	2000
ESP (" WG)	0.5"
Entering Air DB/WB	80 / 67
SEER/EER	17.2
Voltage/Phase/Hertz	208/3/60
Heater kW	6.0
Heating Capacity (MBH)	15.4
MCA	32.2
MOCP	45.0
Compressor RLA	16.2
Condenser Fan FLA	2.5
Blower HP	1.0
Blower FLA	9.4
Evaporator Rows/FPI	4/16
Evaporator Face Area	9.9
R-410A (lbs)	11.8
Unit Weight	780
Filters	(4) 16x25x2
Unit Dimensions	88.6 x 53.3 x 40.9

Ventilation per FBC-M 2014 Table 403.3	
Ventilation Zone Name	Office
1) Minimum O/A required at Supply Outlet Voz:	
a) Occupant Category (table 6-1)	5
Occupant Rate Requirements Rp =	0.06
Building Rate Requirements Ra =	
b) Estimated No. of Occupants in the Zone Pz =	8
c) Zone Net Occupied Area Az =	1200
d) O/A required in Breathing Zone (eq. 6-1 Vbz = RpPz + RaAz) Vbz =	112
e) Zone Air Distribution Effectiveness (table 6-2) Ez =	1
f) Min. O/A required at Supply Outlets (Eq. 6-2 Voz = Vbz/Ez) Voz =	112
SET O/A INTAKE FOR RTU TO: 120 CFM	

NOTE:
PER FBC 2014 COMMERCIAL ENERGY EFFICIENCY 5HT EDITION SECTION C403.2.4.4

SHUTOFF DAMPER CONTROLS:
BOTH OUTDOOR AIR SUPPLY AND EXHAUST DUCTS SHALL BE EQUIPPED WITH DAMPERS THAT WILL AUTOMATICALLY SHUT WHEN THE SYSTEMS OR SPACES SERVED ARE NOT IN USE. VENTILATION OUTSIDE AIR DAMPERS SHALL BE CAPABLE OF AUTOMATICALLY SHUTTING OFF DURING PREOCCUPANCY BUILDING WARMUP, COOLDOWN, AND SETBACK, EXCEPT WHEN VENTILATION REDUCES ENERGY COSTS (E.G., NIGHT PURGE) OR WHEN VENTILATION MUST BE SUPPLIED TO MEET CODE REQUIREMENTS.



2ND FLOOR MECHANICAL PLAN
SCALE: 1/4" = 1'-0"

BUCHANAN P.E CONSULTING INC.
ELECTRICAL * MECHANICAL * PLUMBING
ENGINEERING
6191 W. ATLANTIC BLVD., SUITE # 2 MARGATE, FL 33063
Ph: 954-936-3300 Fax: 954-936-5232
Email: BUCHANAN@PEENGINEERS.COM
CERTIFICATE OF AUTHORIZATION # 8842
□ RAJA BUCHANAN P.E # 48916 □ MAURICE LORD P.E # 72550

SEAL

DATE: _____