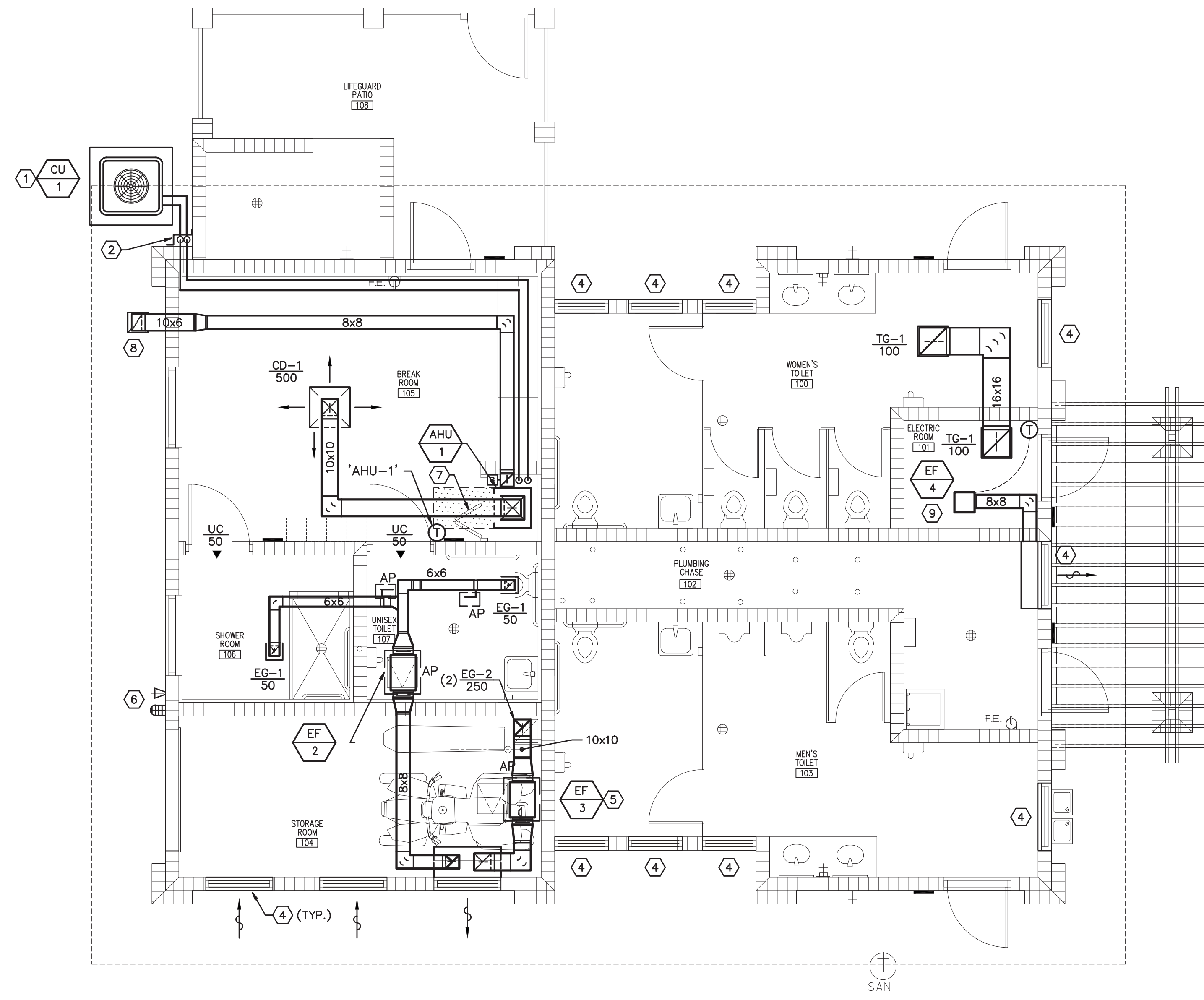
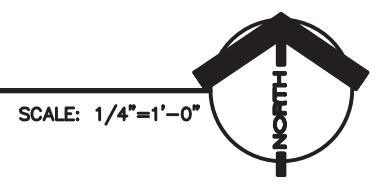


The information contained herein is the property of Johnson, Levinson, Ragan, Davila, Inc. (JLRD) and is intended for copyright. Unauthorized use is prohibited. JLRD makes no warranty or guarantee as to the accuracy or completeness of the information contained herein, use without full verification is at the user's own risk. The user hereby represents, warrants, and agrees that use shall be confined to the specific conditions of the above conditions.



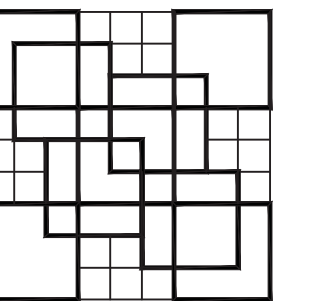
1 HVAC FLOOR PLAN
M-2



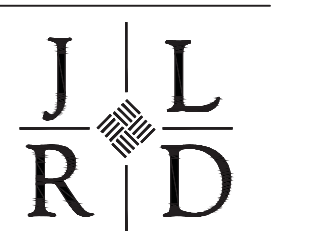
PLAN NOTES

- ① CONDENSING UNIT MOUNTED ON CONCRETE PAD, SEE DETAIL.
- ② REFRIGERANT LINE SET ROUTED DOWN EXTERIOR WALL WITHIN PAINTED ALUMINUM HOUSING. VERIFY COLOR WITH ARCHITECT. SEAL WALL PENETRATIONS WEATHER TIGHT. REFER TO REFRIGERANT PIPING SCHEMATIC FOR ACCESSORIES REQUIRED.
- ③ AIR HANDLING UNIT MOUNTED ON ALUMINUM STAND, SEE DETAIL. ROUTE FULL SIZE CONDENSATE WITH P-TRAP TO HUB DRAIN WITHIN PLUMBING CHASE. ROUTE REFRIGERANT LINES ABOVE CEILING WITHIN JOIST SPACE TO CONDENSING UNIT.
- ④ LOUVER PROVIDED BY ARCHITECT.
- ⑤ EXPLOSION PROOF INLINE MOUNTED EXHAUST FAN, SUPPORTED FROM STRUCTURE WITH SPRING ISOLATORS. PROVIDE WITH 10x10 DUCT FROM FAN DISCHARGE, TRANSITION FROM FLEXIBLE DUCT CONNECTION TO FAN. ROUTE 10x10 DUCT AND CONNECT TO PLENUM ON BACK OF EXHAUST LOUVER.
- ⑥ AUDIBLE ALARM AND LIGHT INTERLOCKED WITH EXHAUST FAN MOUNTED AT 8'-0"± AFF.
- ⑦ LOUVER BY-FOLD DOOR TO ALLOW FOR RETURN AIR, 400 CFM.
- ⑧ OUTSIDE AIR INTAKE (GRILLE), TITUS MODEL 83FS, 16x16, WITH INSECT SCREEN, MOUNTED IN SOFFIT. 10x6 OA DUCT FROM GRILLE, TRANSITIONS TO 8x8 WITHIN CEILING SPACE, TO MECH CLOSET. TERMINATE DUCT WITHIN CLOSET WITH GRAVITY BACKDRAFT DAMPER.
- ⑨ FAN TO BE SUSPENDED FROM CEILING BELOW CEILING. LOCATION MUST BE COORDINATED WITH CEILING MOUNTED LIGHTING AND ALL OTHER PANELS/EQUIPMENT WITHIN THE ROOM TO INSURE ALL REQUIRED NEC REQUIRED CLEARANCES, ACCESS, ETC.

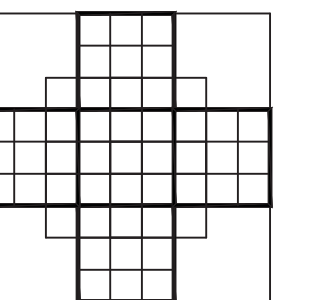
TOILET SQUARE FOOTAGE = 240 FT²
 REQUIRED LOUVER MIN. FREE AREA EQUALS
 4% OF TOTAL FLOOR AREA = 9.6 FT².
 * TYPICAL EACH TOILET ROOM
 TOTAL FREE AREA OF LOUVERS SHOWN = 10.3 FT².
 THIS IS BASED ON GREENHECK MODEL EHH-601D.
 (BASIS OF DESIGN). IF THE CONTRACTOR CHOOSES
 TO PROVIDE AN ACCEPTABLE ALTERNATE, THE FREE
 AREA MUST BE CONFIRMED TO MEET THE MINIMUM
 REQUIRED FREE AREA (9.6 FT²) FOR EACH TOILET
 ROOM.



COLOME
 & Associates, Inc.
 AA 0003439
 8500 24TH STREET
 WEST PALM BEACH
 FLORIDA 33411
 (561) 833-9147



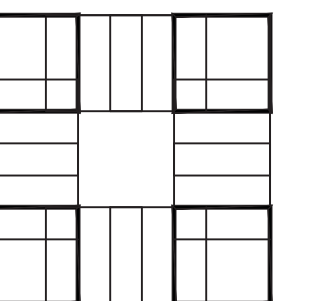
JOHNSON, LEVINSON
 RAGAN, DAVILA, INC.
 CONSULTING ENGINEERS
 1150 CONVENT ROAD, SUITE 100
 WEST PALM BEACH, FLORIDA 33411
 (561) 689-2313 (661) 689-2312 Fax
 www.jlr.com
 Certification Number 06599
 Michael P. Linden, P.E. #58094
 Charles C. Gahmann, P.E. #19136



F.B.C.
 R.G. KREUBLER PARK
 RESTROOM BUILDING
 AND ENTRY DRIVE
 MODIFICATIONS
PBC NO 14204
2885 SOUTH OCEAN BLVD.

LAKE WORTH
FLORIDA

PROJECT NO.
 201402
 JLRD NO.
 115042



SHEET TITLE:
 HVAC FLOOR
 PLANS

REVISIONS:

DATE
 11/20/15
 DRAWN BY:
 -
 CHECKED BY:
 -

SHEET
 NUMBER:

M-2