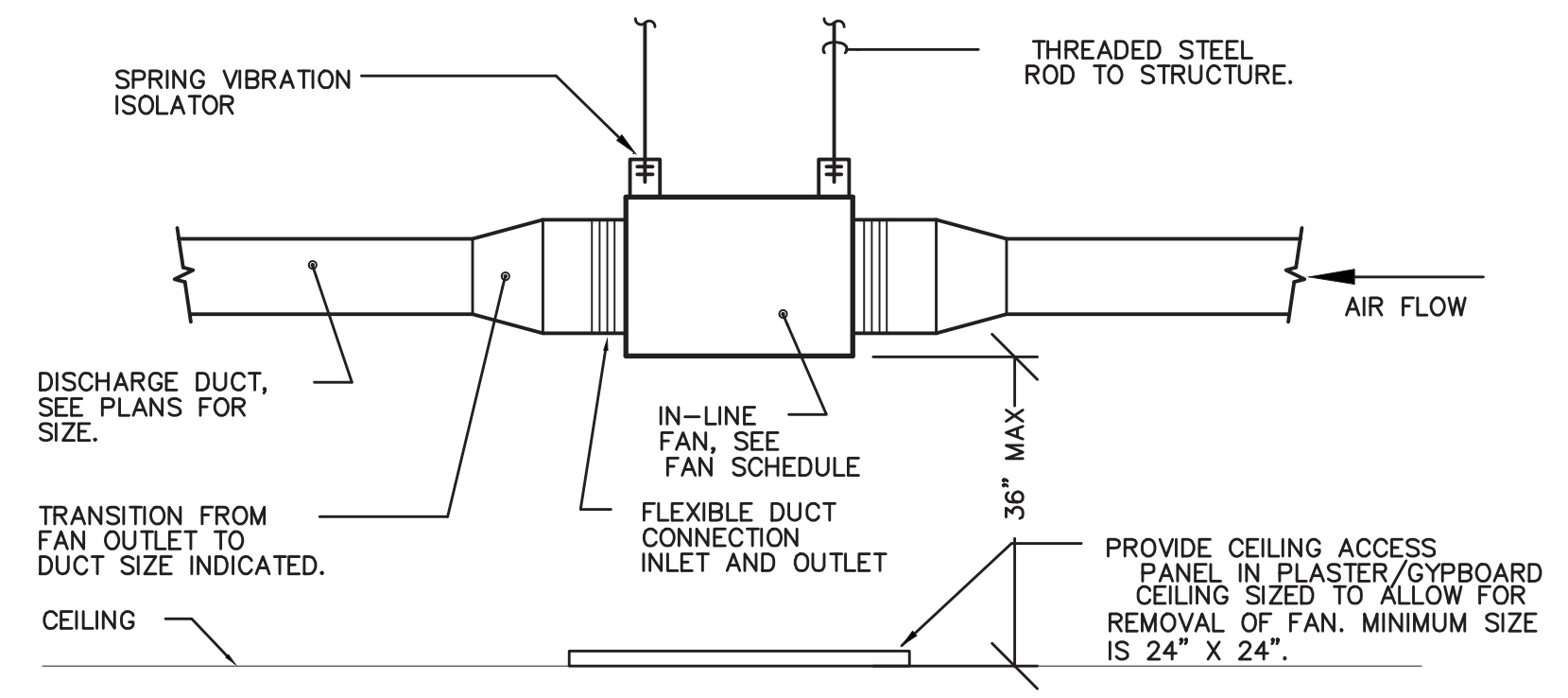
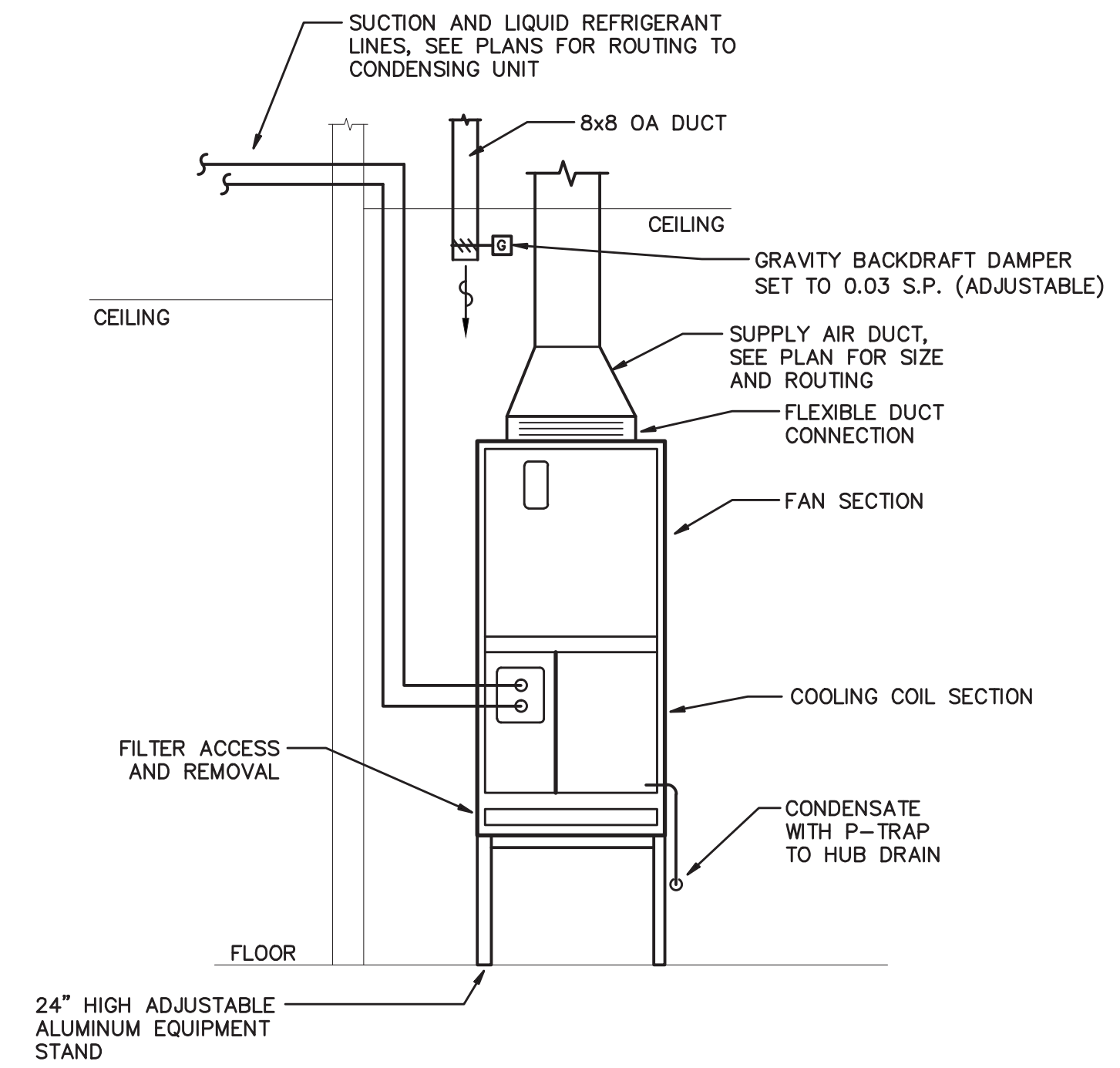


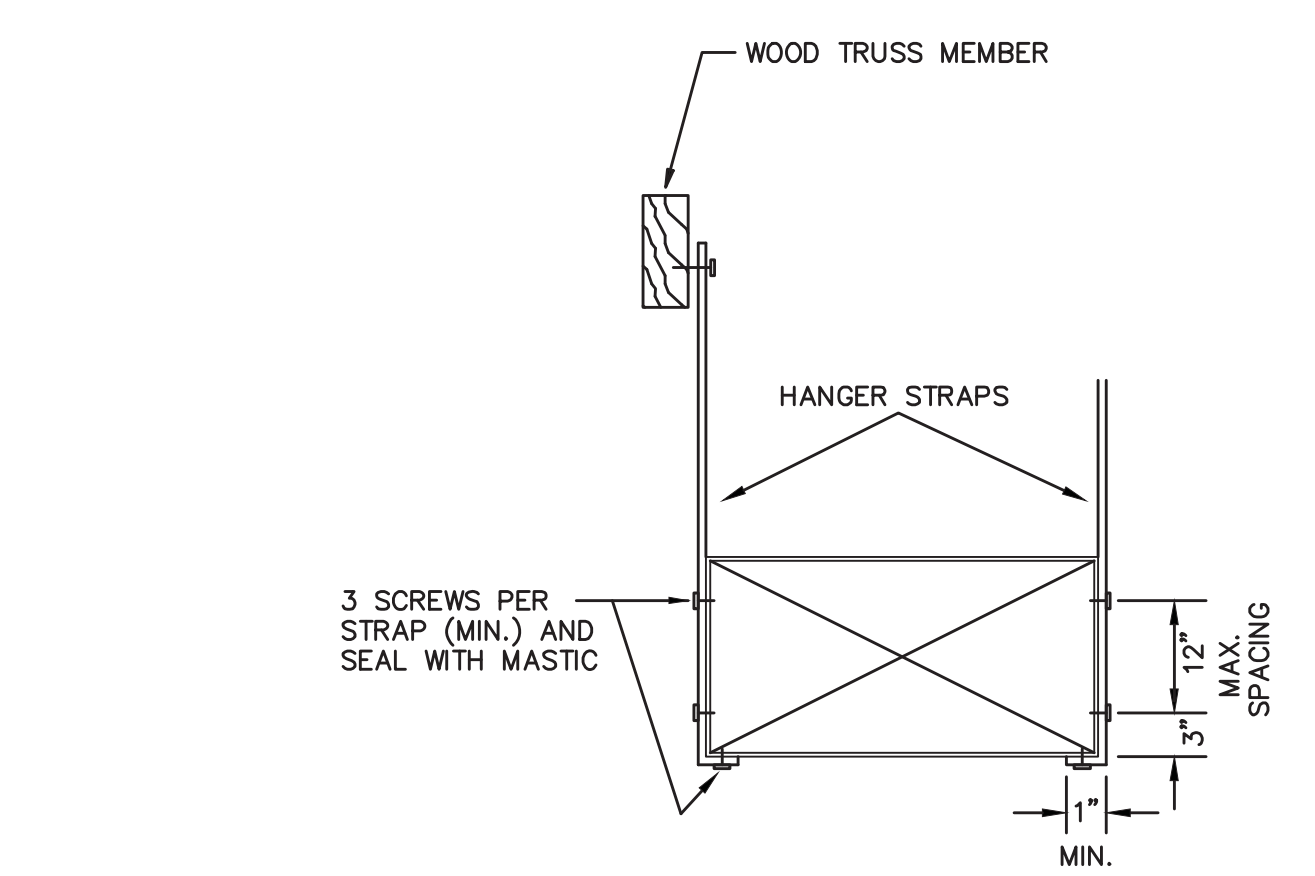
The information contained herein is the property of Johnson, Levinson, Ragan, Davila, Inc. (JLRD) and is intended for copyright. Unauthorized use is prohibited. JLRD makes no warranty or guarantee as to the accuracy or completeness of the information contained herein, use without full verification is at the user's own risk. The user hereby represents, warrants, and agrees to hold JLRD harmless from any use, and such use shall be construed as unapproved acceptance of the above conditions.



1 IN-LINE FAN DETAIL
 M-3 SCALE: NONE



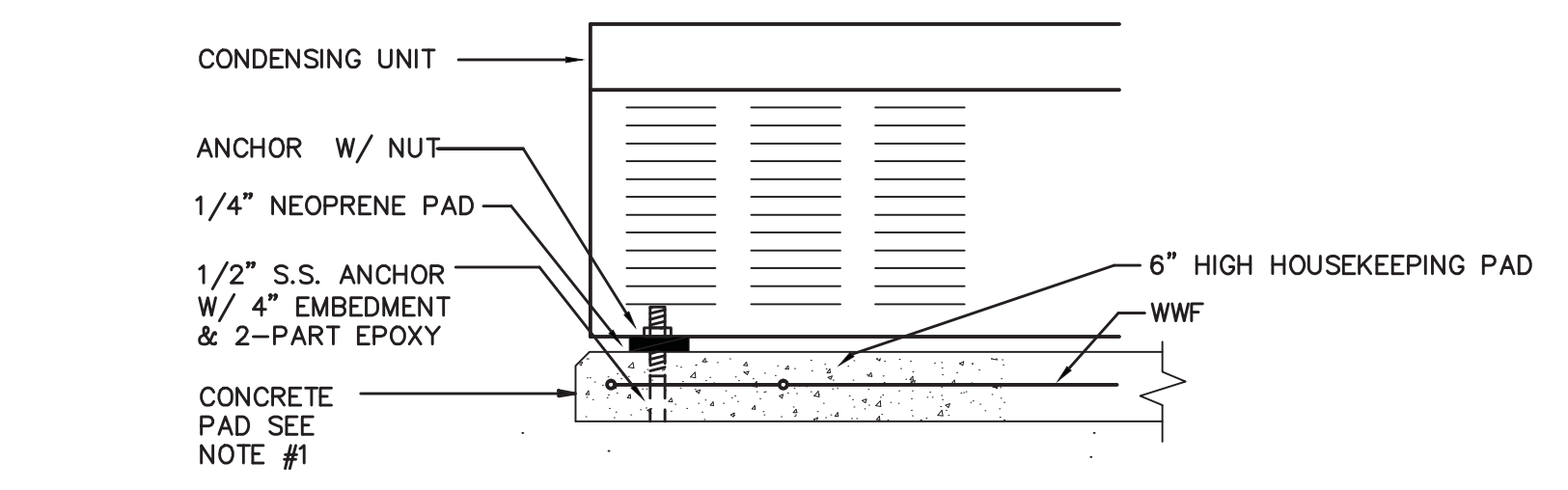
2 DX AIR HANDLING DETAIL
 M-3 SCALE: NONE



3 DUCT HANGING DETAIL
 M-3 SCALE: NONE

DUCT HANGER NOTES:

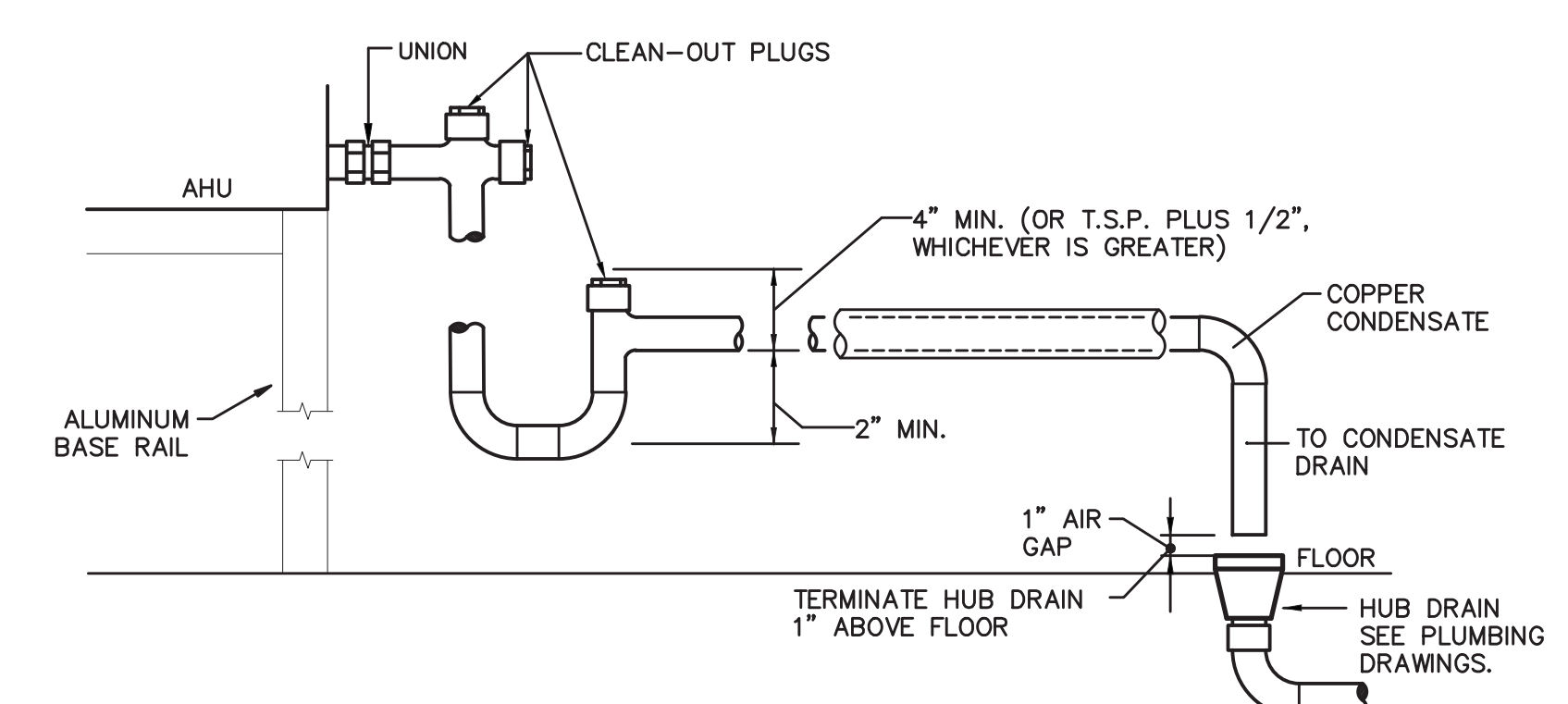
1. MAXIMUM SPACING BETWEEN HANGER LOCATIONS SHALL BE 8'-0" PER PAIR.
2. HANGERS SHALL BE MINIMUM 1 1/2" X 22 GAGE GALVANIZED STEEL, SEE "RECTANGULAR DUCT HANGERS", SMACNA TABLES 4-1, 4-2.
3. STRAPS SHALL BE MINIMUM 1 1/2" X 22 GAGE GALVANIZED STEEL, SEE "RECTANGULAR DUCT HANGERS", SMACNA TABLES 4-1, 4-2.



4 CONDENSING UNIT SUPPORT DETAIL
 M-3 SCALE: NONE

CONDENSING UNIT SUPPORT NOTES:

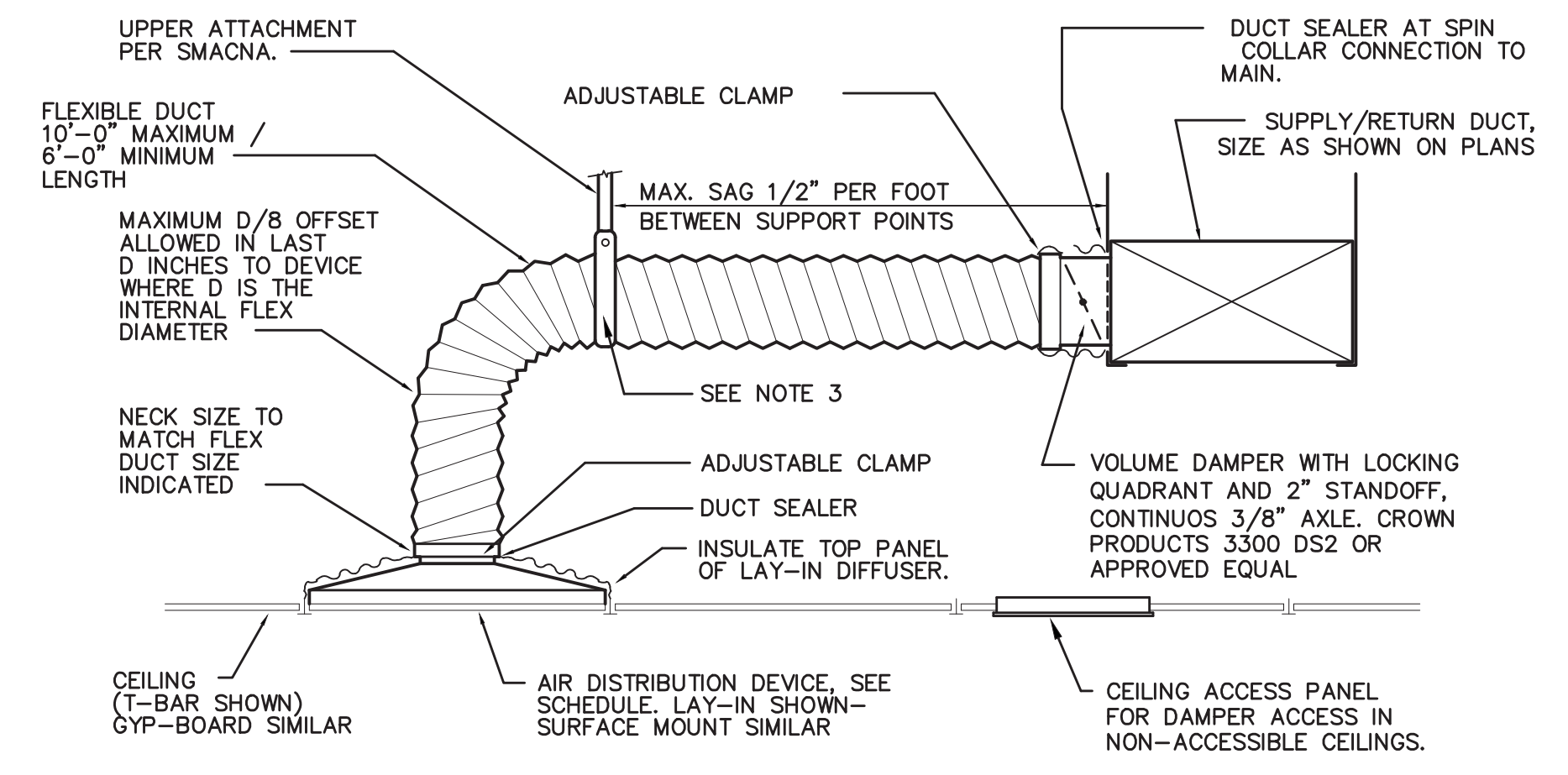
1. PAD SHALL BE 6" THICK, 3000 PSI CONCRETE WITH 6 X 6 - W 2.9 X W 2.9 WWF 12" THICKENED EDGE WITH 2 #5 REBAR CONTINUOUS.



5 A.H.U. CONDENSATE DRAIN DETAIL
 M-3 SCALE: NONE

AHU CONDENSATE DRAIN NOTES:

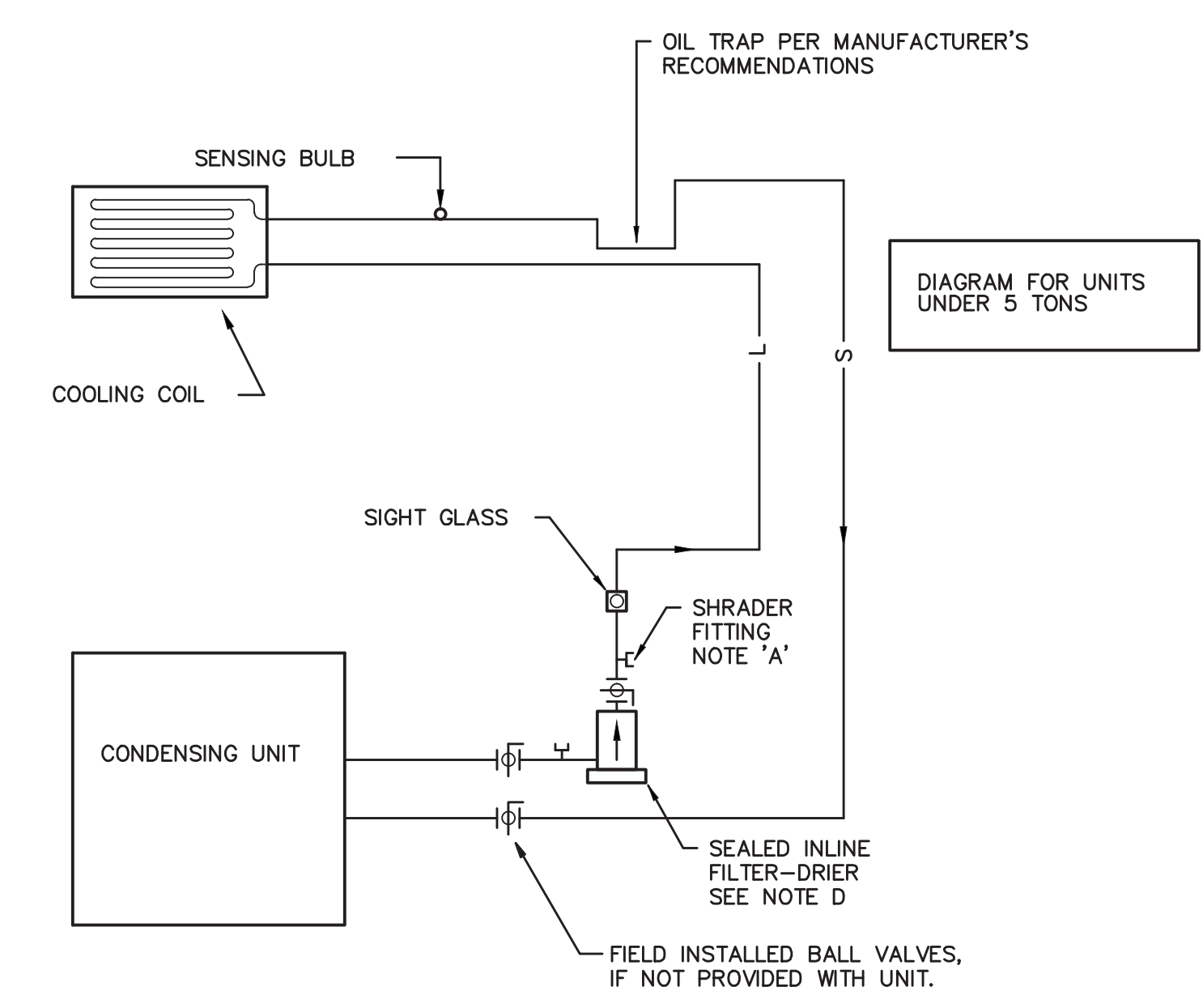
1. CONDENSATE DRAIN SHALL BE PIPED FULL SIZE OF UNIT CONNECTION.
2. CONDENSATE PIPING SHALL BE INSULATED PER SPECIFICATIONS.
3. CONDENSATE PIPING SHALL BE SUPPORTED FROM FLOOR AT 5'-0" (MIN) INTERVALS.



6 FLEXIBLE DUCT DETAIL
 M-3 SCALE: NONE

FLEXIBLE DUCT NOTES:

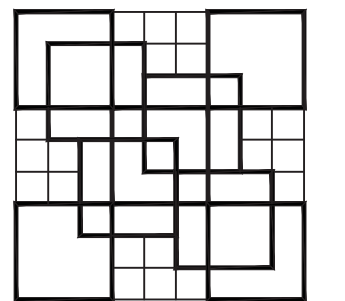
1. FLEXIBLE DUCTS SHALL BE ONE-PIECE AND SHALL NOT BE SPLICED TOGETHER.
2. EXTEND FLEXIBLE DUCT INSULATION TO DUCT/DIFFUSER PANEL INSULATION AND SEAL WITH MASTIC.
3. MINIMUM 1-1/2" WIDE 22 GAUGE GALVANIZED STRAP HANGER WITH HEMMED EDGES PER SMACNA
4. FLEXIBLE AIR DUCT SHALL BE FULLY EXTENDED AND NOT COMPRESSED WITH ELBOW RADIUS NO LESS THAN R/D = 1.0.



7 REFRIGERANT PIPING SCHEMATIC
 M-3 SCALE: NONE

REFRIGERANT PIPING NOTES:

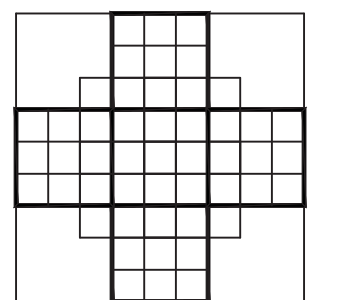
- A. PROVIDE SHRADER FITTINGS IF NOT PROVIDED WITH CONDENSING UNIT. SHRADER FITTING SHALL BE INSTALLED DIRECTLY INTO PIPE; NO EXTENDED TUBES ALLOWED.
- B. PROVIDE BALL VALVES IF NOT PROVIDED WITH CONDENSING UNIT.
- C. ALL REFRIGERANT PIPING, ACCESSORIES, VALVES, ETC., SHALL BE INSTALLED IN COMPLIANCE WITH THE REFRIGERATION PIPING SCHEMATIC.
- D. INSTALL ARMAFLEX TYPE "AP" 3/4" THICK FOAM PLASTIC INSULATION ON ALL SUCTION LINES FROM EACH CONDENSING UNIT TO THE AIR HANDLING UNIT COIL. ALL INSULATION SHALL BE INSTALLED WITH ARMSTRONG #520 ADHESIVE WITH 100% COVERAGE ON ALL BUTT JOINTS. INSULATION SHALL BE SLIPPED OVER PIPING IN ONE PIECE WITH NO LONGITUDINAL JOINTS.
- E. WHERE REFRIGERANT INSULATION IS INSTALLED EXPOSED OUTSIDE, IT SHALL BE PAINTED WITH TWO COATS OF PAINT, CONTAINING UV INHIBITORS, AND IN ACCORDANCE WITH THE INSULATION MANUFACTURER'S RECOMMENDATIONS. ARMSTRONG WP OR EQUAL.
- F. SLOPE ALL REFRIGERANT LINES TOWARD CONDENSING UNITS



COLOME & Associates, Inc.
 AA 0003439
 832 24TH STREET
 WEST PALM BEACH
 FLORIDA 33407
 (561) 833-9147



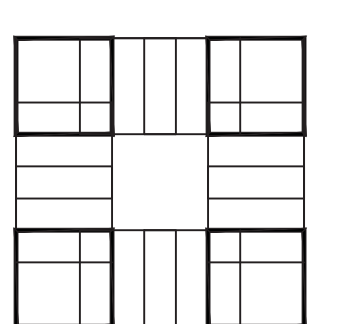
**JOHNSON, LEVINSON
 RAGAN, DAVILA, INC.**
 CONSULTING ENGINEERS
 180 Connaught Boulevard, Suite 100
 West Palm Beach, Florida 33401
 (561) 689-2303 • (661) 689-2302 Fax
 www.jlr.com
 Certification Number 60599
 Michael P. Lindon, P.E. #58094
 Charles C. Gableman, P.E. #51916



**F. B. C.
 R.G. KREUBLER PARK
 RESTROOM BUILDING
 AND ENTRY DRIVE
 MODIFICATIONS**
 PBC NO 14204
 2006 SOUTH OCEAN BLVD.

LAKE WORTH
 FLORIDA

PROJECT NO.
 201402
 JLRD NO.
 115042



**SHEET TITLE:
 MECHANICAL
 DETAILS**

REVISIONS:

DATE
 1/20/15
 DRAWN BY:
 -
 CHECKED BY:
 -

**SHEET
 NUMBER:**

M-3