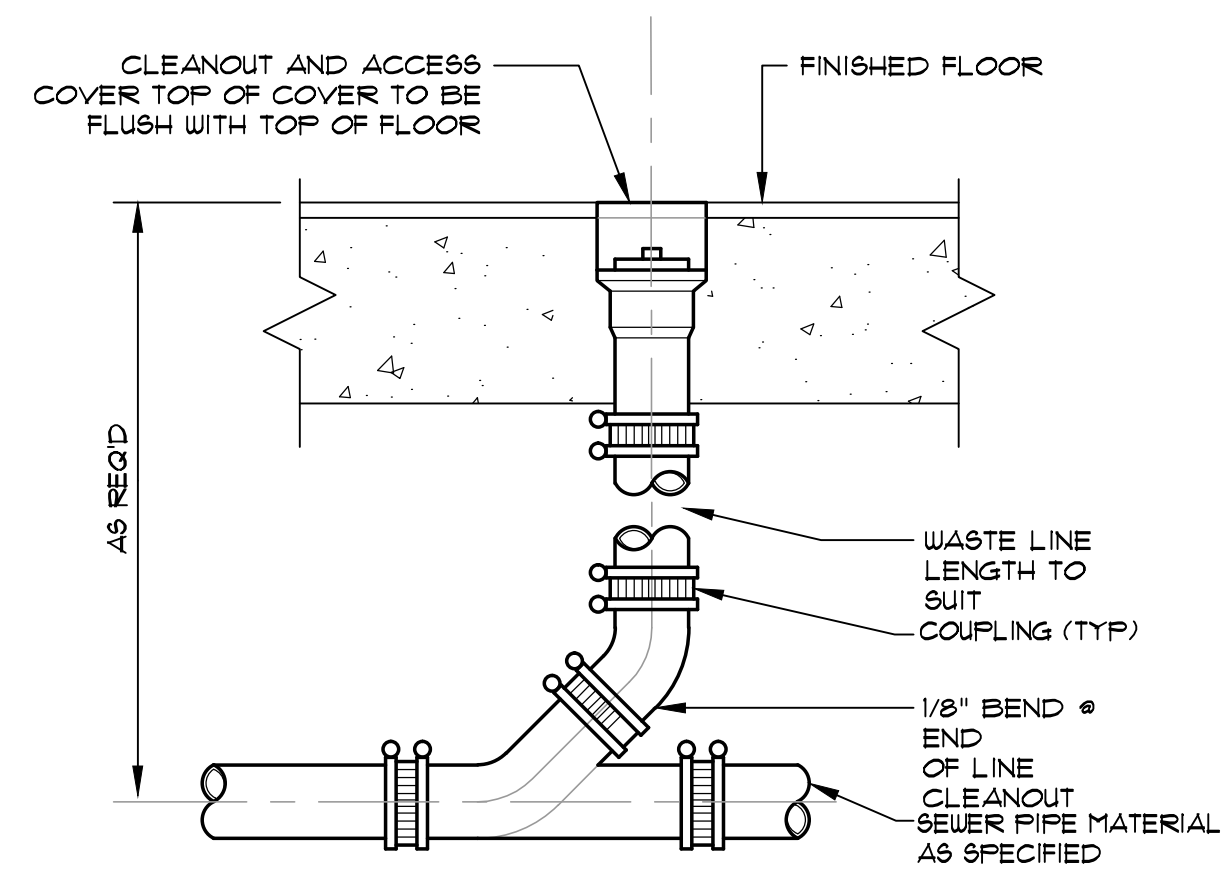


- NOTES:
- ON DUCTS OVER 48" WIDE, BOTTOM SHALL BE BRACE BY ANGLE. FOR CROSS SECTION AREA MORE THAN 8 SQUARE FEET, DUCT SHALL BE BRACED BY ANGLES ON ALL FOUR SIDES.
 - SUPPORTS SHALL BE SPACED AND SIZED AS PER SMACNA STANDARDS.

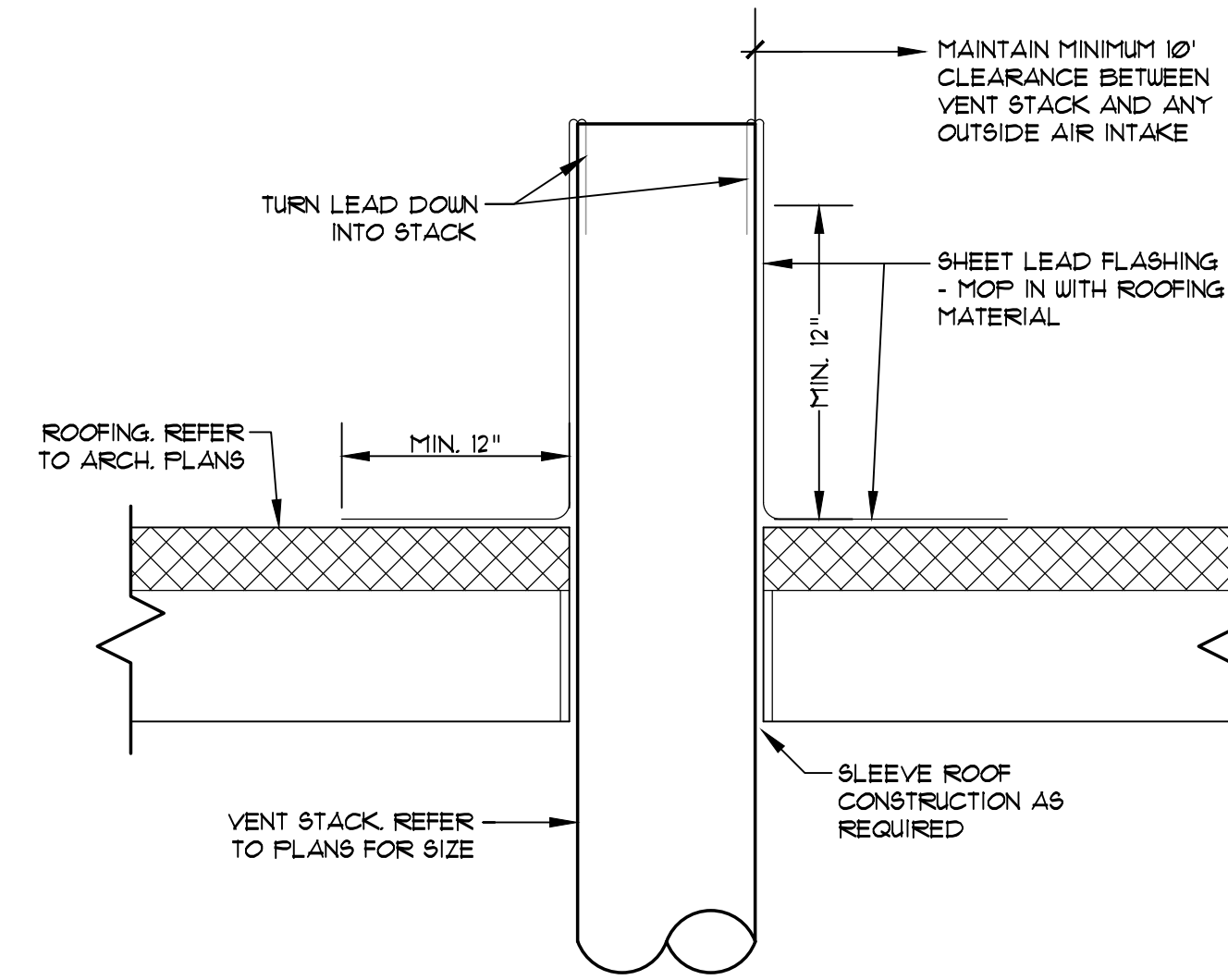
A DUCT HANGER SUPPORT

MP0.5 NTS



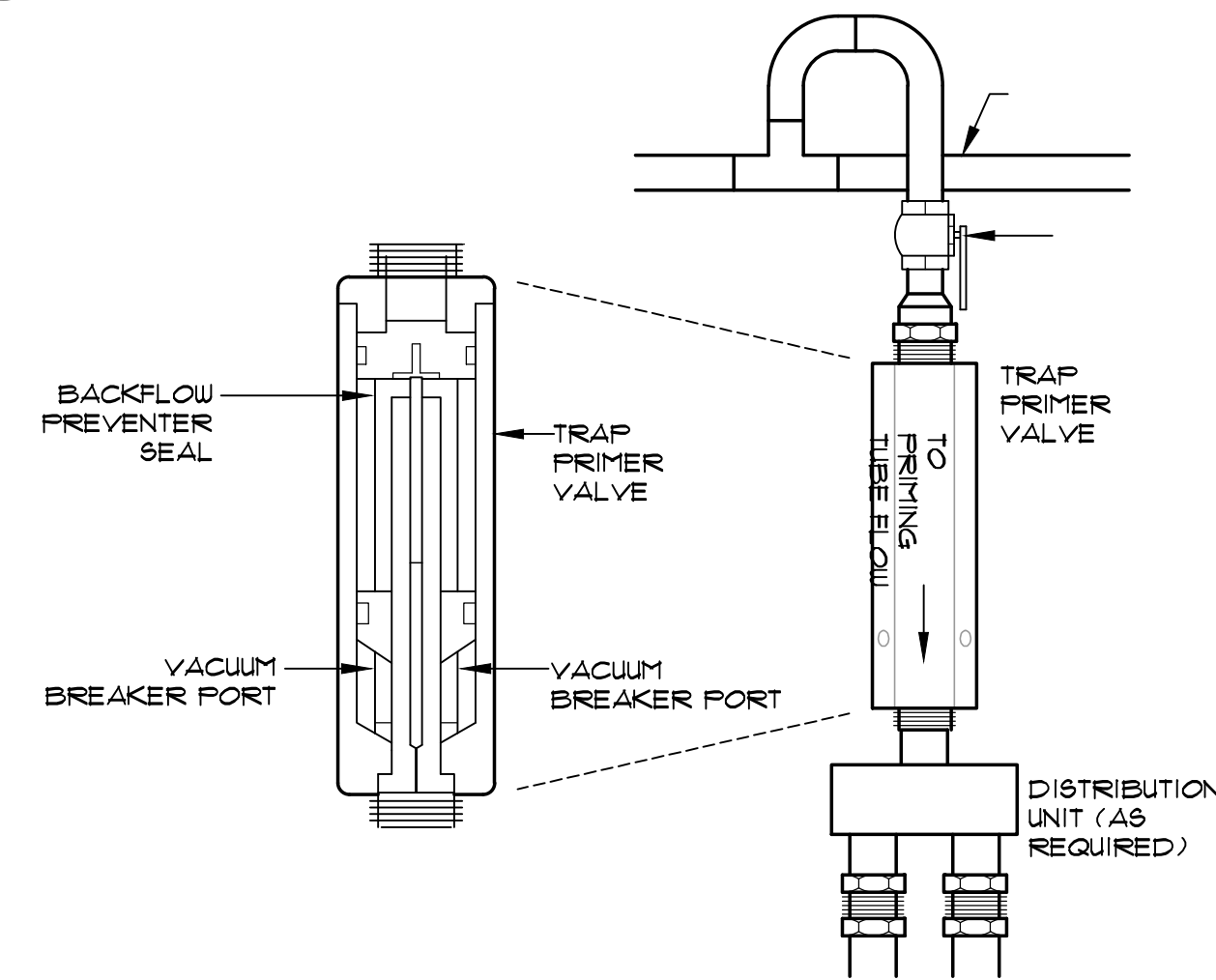
B FLOOR CLEAN OUT

MP0.5 NTS



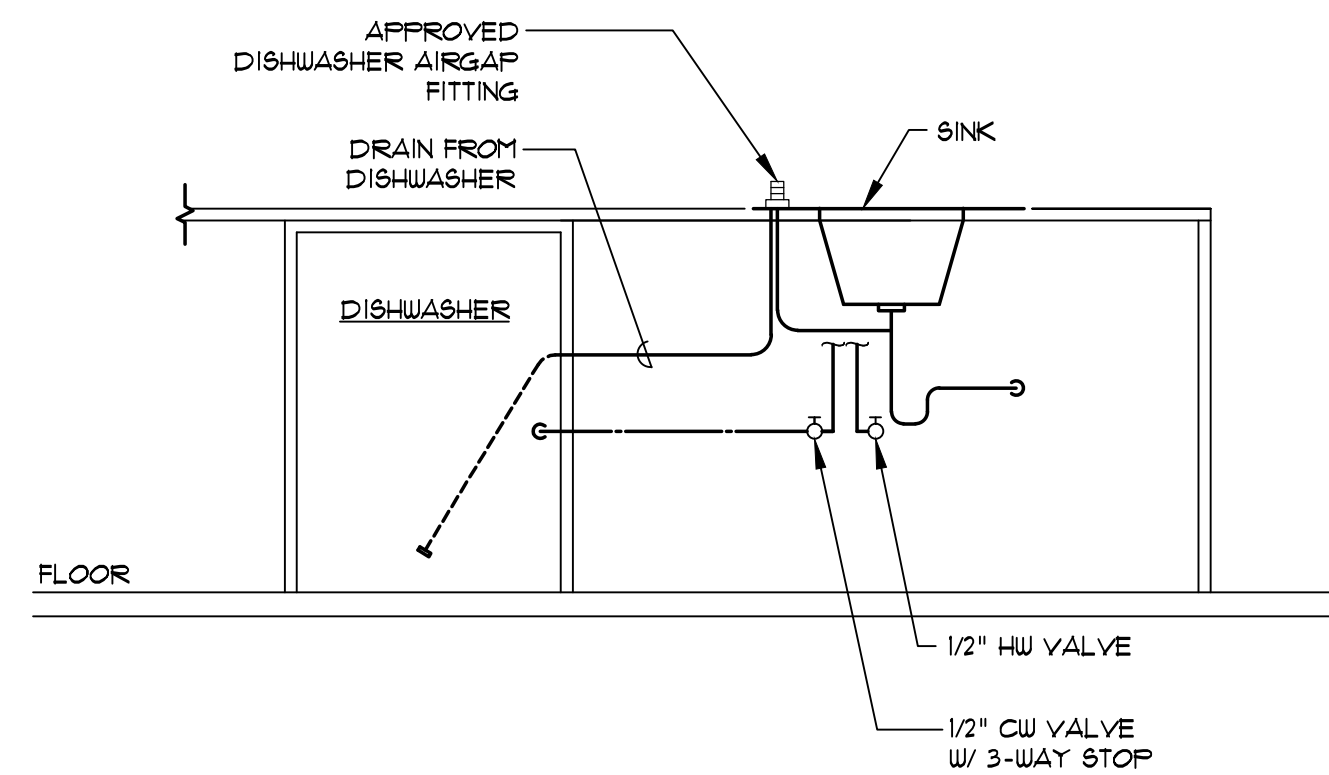
C VENT THROUGH ROOF

MP0.5 NTS



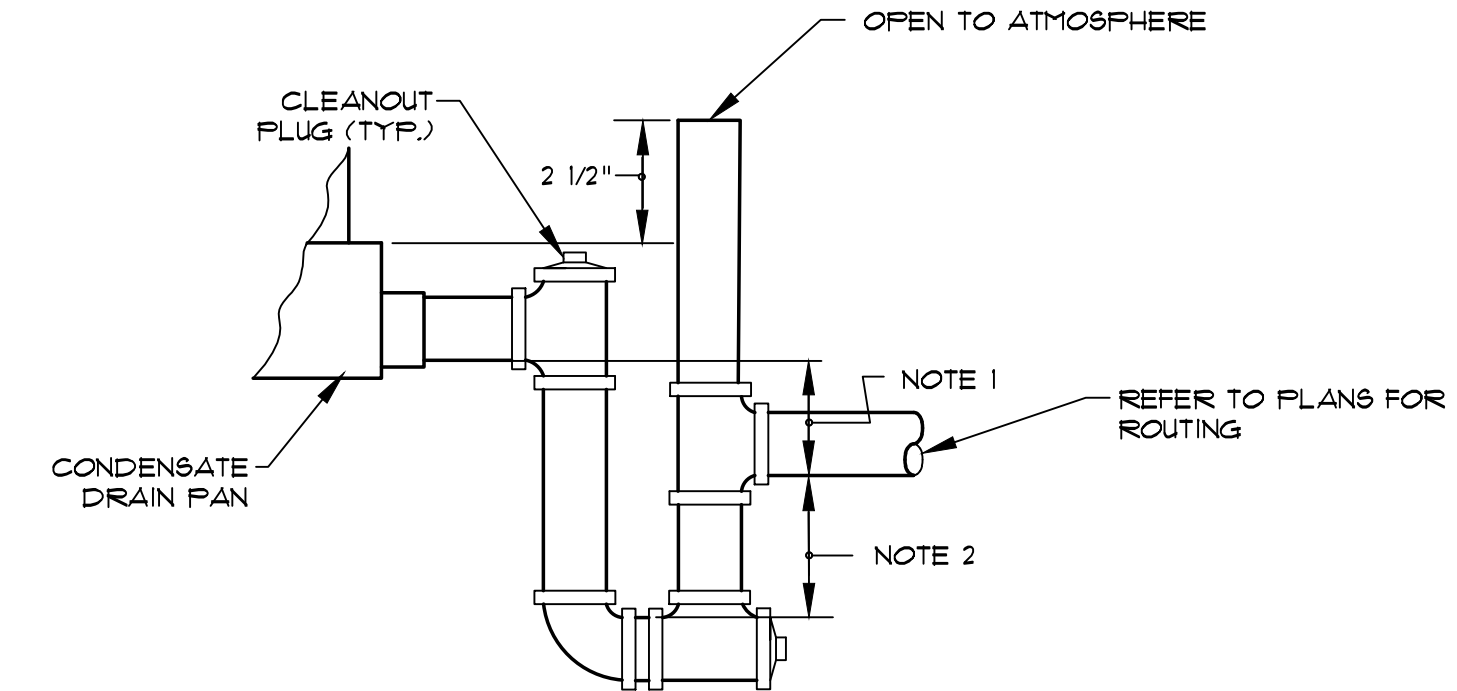
D PRESSURE DEPENDENT TRAP PRIMER

MP0.5 NTS



E SINK W/DISHWASHER

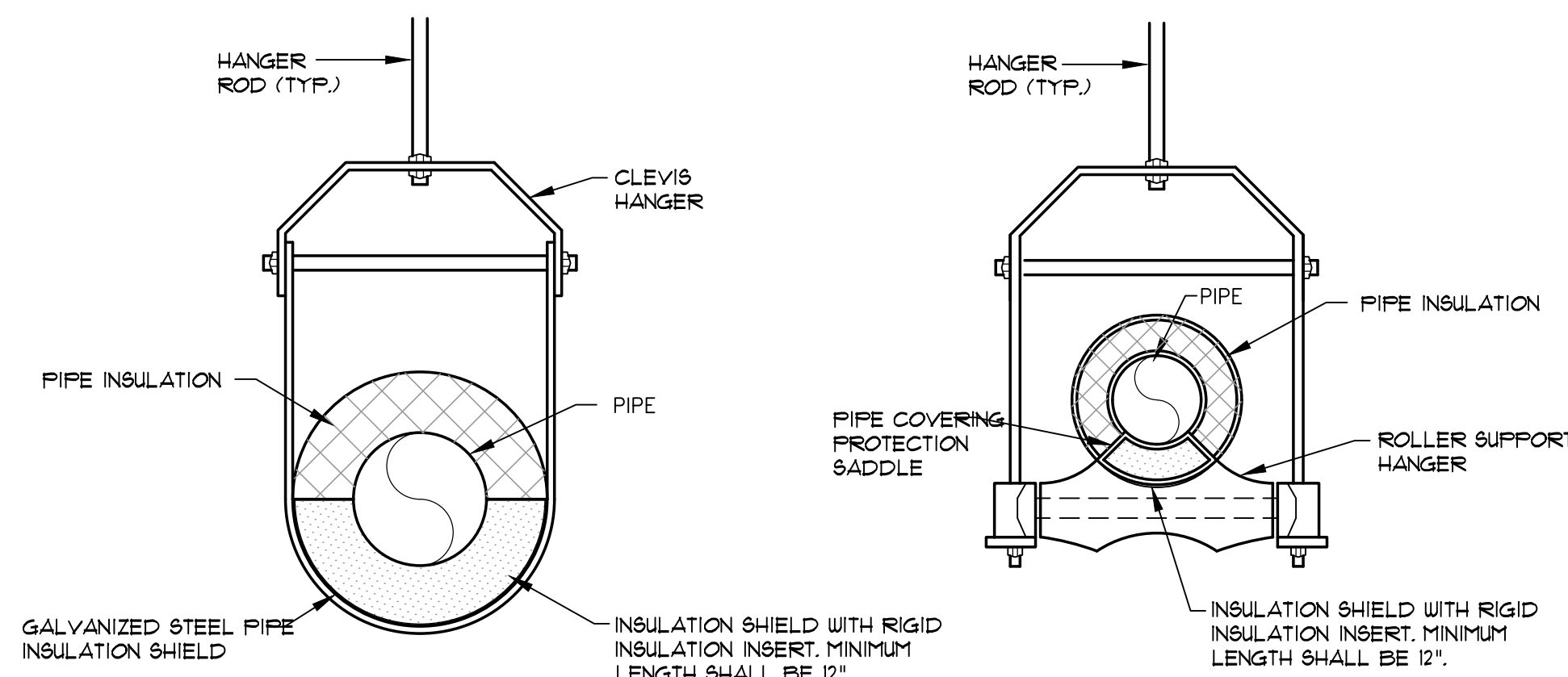
MP0.5 NTS



- NOTES:
- THIS DIMENSION IN INCHES MUST BE GREATER THAN THE MAXIMUM FAN SUCTION STATIC PRESSURE IN INCHES WATER COLUMN.
 - THIS DIMENSION IN INCHES MUST BE GREATER THAN 1/2 OF DIMENSION IN NOTE 1 PLUS 1".
 - ALL PIPES FULL SIZE OF UNIT CONDENSATE DRAIN OUTLET.
 - MANUALLY PRIME TRAP BEFORE START UP.

F CONDENSATE DRAIN (DRAW THROUGH)

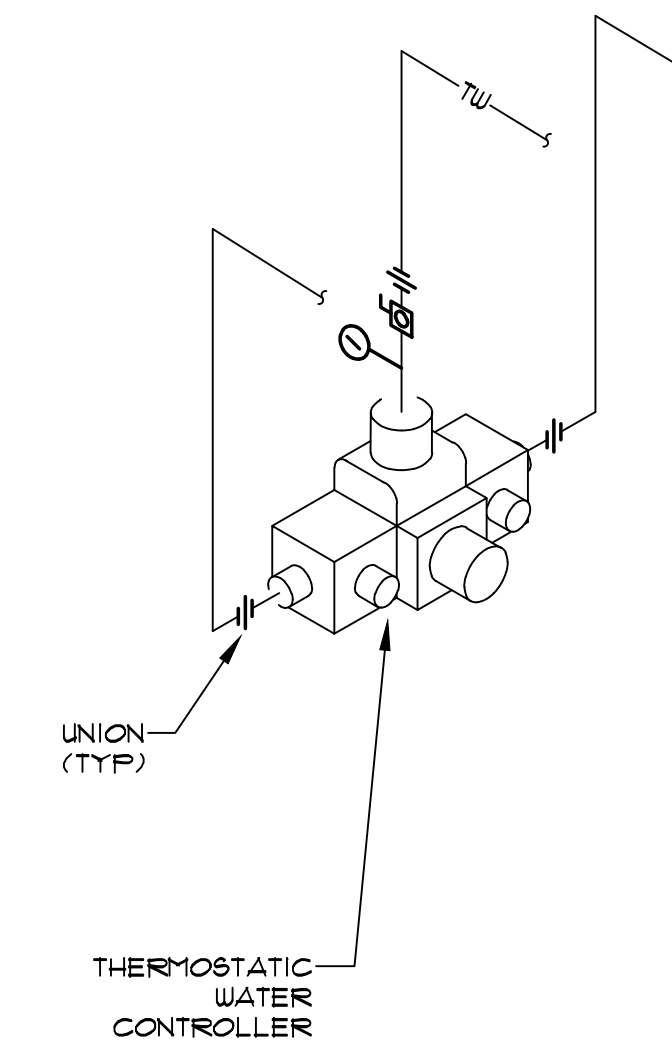
MP0.5 NTS



- NOTES:
- USE CLEVIS HANGER FOR 1/2" UP TO 4".
 - USE ROLL SUPPORT HANGER FOR 6" TO 8".
 - PIPE 10" AND LARGER SHALL HAVE ROLLER SUPPORT HANGER WITH DUAL RODS. FASTEN TO TOP CHORD OF STRUCTURAL ELEMENTS.

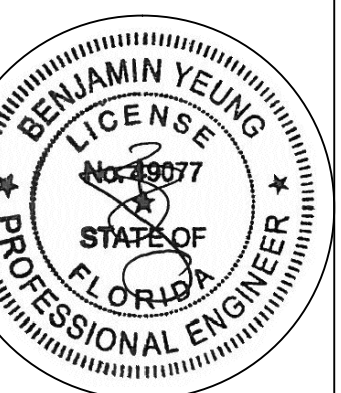
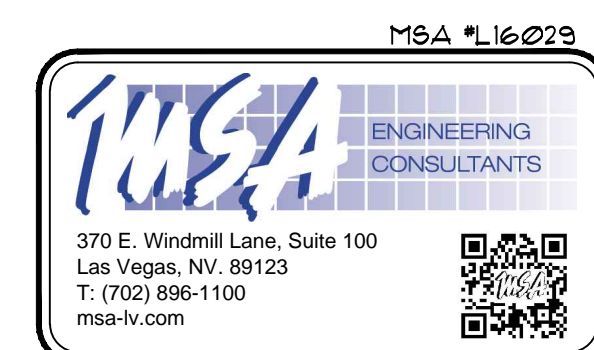
G PIPE HANGER FOR INSULATED PIPING

MP0.5 NTS



H TEMPERING STATION

MP0.5 NTS



AUG. 02, 2016
 COPYRIGHT © 2016 ACKAL ARCHITECTS, APC.
 THIS DOCUMENT IS THE PROPERTY OF
 ACKAL ARCHITECTS, APC.
 THIS DOCUMENT MAY NOT BE COPIED,
 REPRODUCED OR USED WITHOUT
 WRITTEN CONSENT FROM
 ACKAL ARCHITECTS, APC.

proj. no. 16-002
 date: 08-02-2016
 project architect: B.A.
 project manager: A.D.
 drawn by: MSA
 file name: LAKEWORTH
 revised:
 plot scale: AS NOTED
 sheet name:
 MECHANICAL AND
 PLUMBING DIAGRAMS

sheet no.
 MPO.5