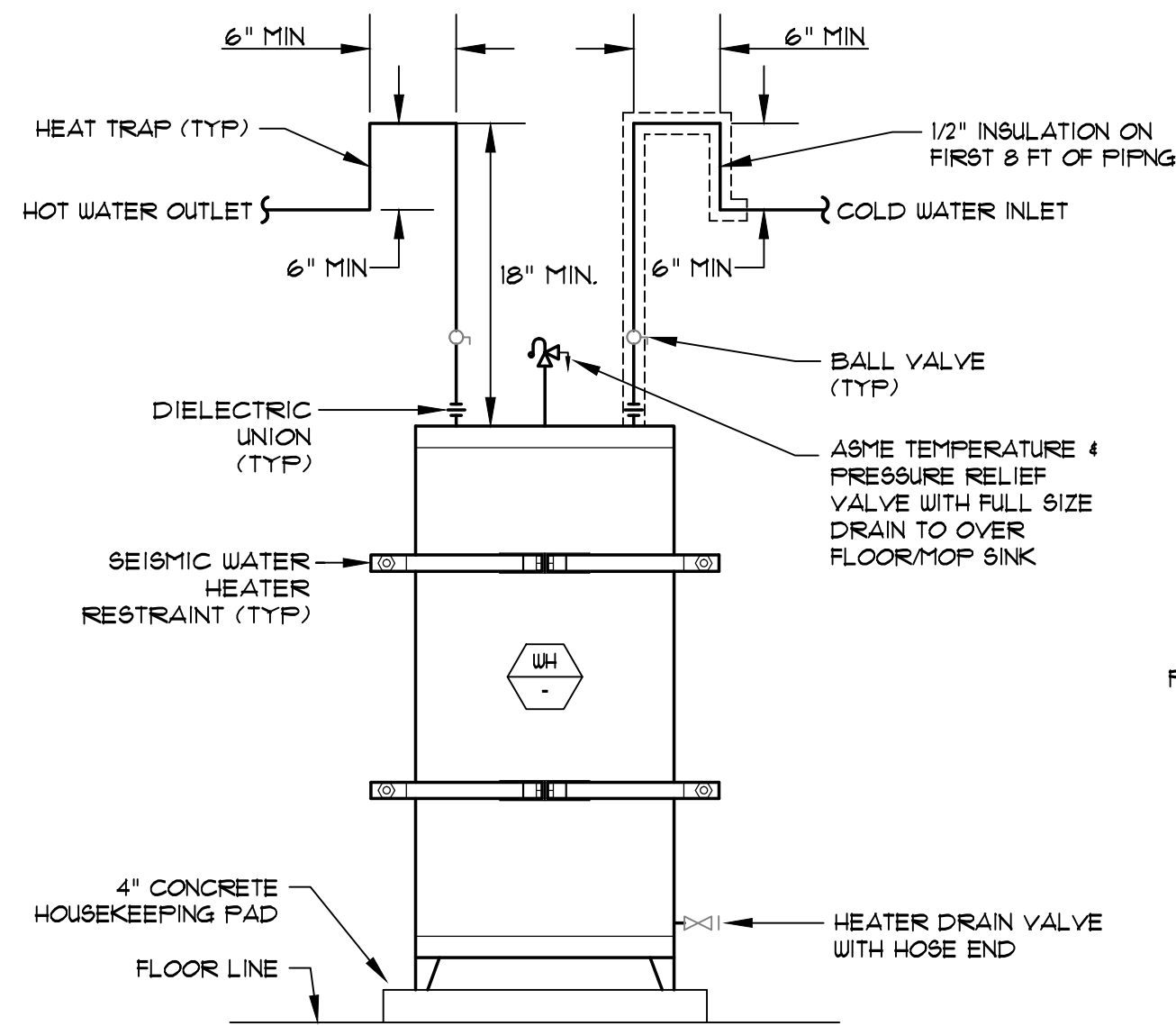
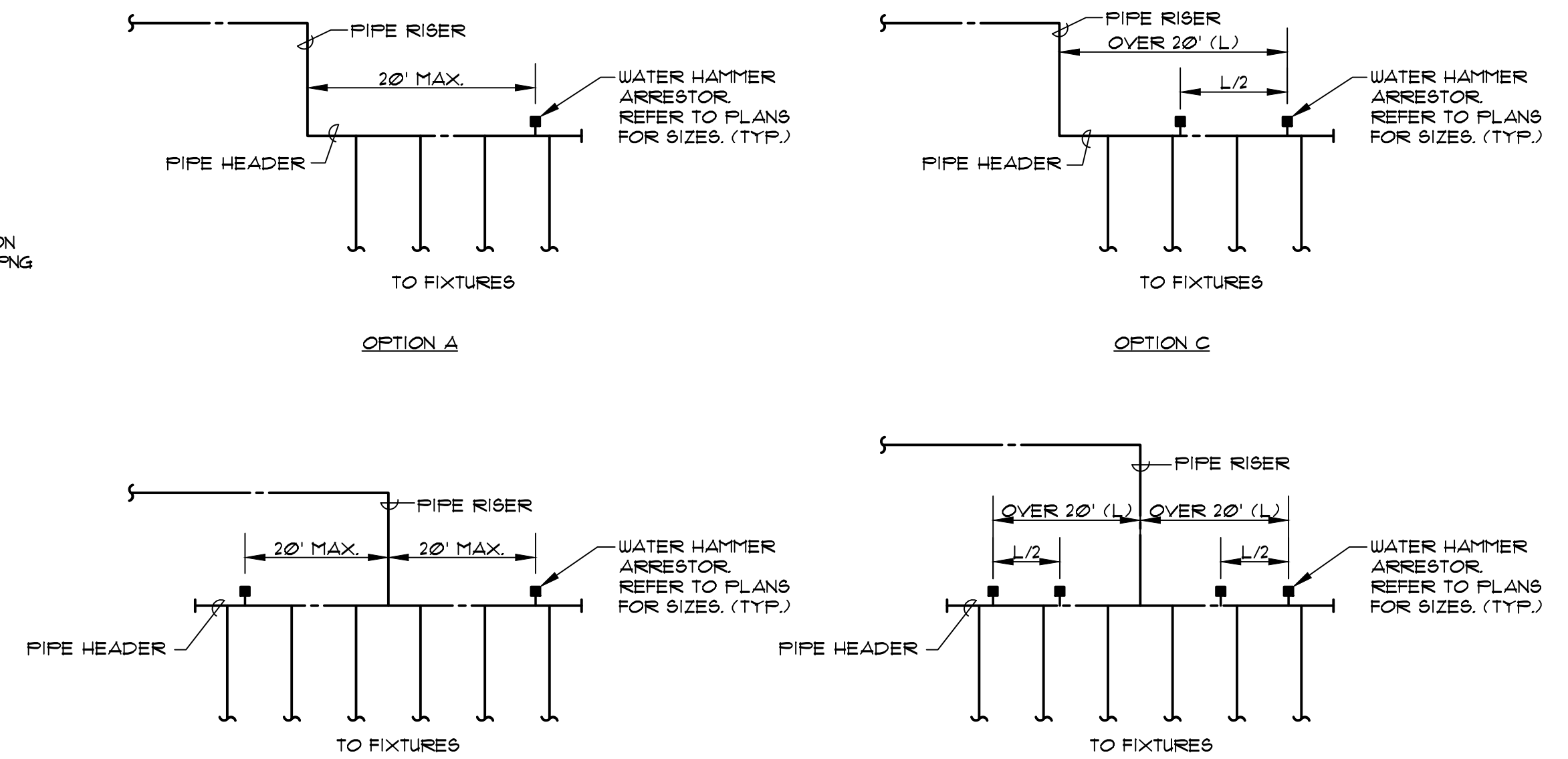


A
MPO.6 NT9
ROOF EXHAUST FAN



B
MPO.6 NT9
ELECTRIC WATER HEATER

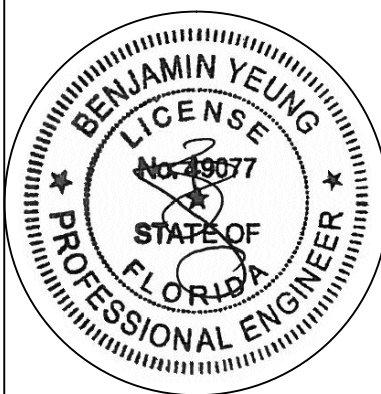


NOTES:
 1. REFER TO PLANS FOR PIPE SIZES AND EXACT ROUTING.
 2. TYPICAL FOR BOTH DOMESTIC COLD AND HOT WATER SYSTEMS.
 3. WHA LOCATED ON DRAWINGS INDICATES MINIMUM REQUIRED. THIS CONTRACTOR SHALL REVIEW EACH INSTALLATION AND DETERMINE IF ADDITIONAL WHA ARE REQUIRED. IF IT IS REQUIRED, INSTALL PER THIS DETAIL AND/OR AS RECOMMENDED BY THE MANUFACTURER AND FDI STANDARDS.

C
MPO.6 NT9
WATER HAMMER ARRESTOR

ACKAL A PROFESSIONAL CORPORATION
A R C H I T E C T S
 105 CHAPEL DRIVE - LAFAYETTE, LOUISIANA 70506
 337-988-5271 ph. - 337-988-5272 fax
 www.ackalarchitects.com

INTERIOR TENANT IMPROVEMENT FOR:
 IMMUNOTEK BIO CENTERS, LLC
 4550 LAKE NORTH ROAD
 OFFICE DEPOT PLAZA, SUITE B-5
 LAKE WORTH, PALM BEACH COUNTY, FL 33463



AUG. 02, 2016
 COPYRIGHT © 2016 ACKAL ARCHITECTS, APC.
 THIS DOCUMENT IS THE PROPERTY OF
 ACKAL ARCHITECTS, APC.
 THIS DOCUMENT MAY NOT BE COPIED,
 REPRODUCED OR USED WITHOUT
 WRITTEN CONSENT FROM
 ACKAL ARCHITECTS, APC.

proj. no. 16-002
 date: 08-02-2016
 project architect: B.A.
 project manager: A.D.
 drawn by: MSA
 file name: LAKEWORTH
 revised:
 plot scale: AS NOTED
 sheet name:
 MECHANICAL AND
 PLUMBING DIAGRAMS

sheet no.
 MPO.6

