

The information contained herein is the property of Johnson, Levinson, Ragan, Davila, Inc. (JLRD) and is intended for copyright. Unauthorized use is prohibited. JLRD makes no warranty or guarantee as to the accuracy or completeness of the information contained herein, use without full verification is at the user's own risk. The user hereby represents, warrants, and agrees that use shall be confined to the specific conditions.

LEGEND	
RWL	RAIN WATER LEADER
PDI	PLUMBING DRAINAGE INSTITUTE
AVTR	ACID VENT THRU ROOF
VTR	VENT THRU ROOF
WC	WATER CLOSET
UR	URINAL
LAV	LAVATORY
SS	SERVICE SINK
EWC	ELECTRIC WATER COOLER
WH	WALL HYDRANT
SH	SHOWER
S	SINK
FD	FLOOR DRAIN
ECO	EXTERIOR CLEANOUT
CO	CLEANOUT
FS	FLOOR SINK
RD	ROOF DRAIN
CWD	CAN WASH DRAIN
HD	OPEN HUB DRAIN 1" ABOVE FLOOR
FFD	FUNNEL FLOOR DRAIN
GT	GREASE TRAP
HB	HOSE BIBB
SOV	SHUT OFF VALVE
WHA	WATER HAMMER ARRESTER
----	COLD WATER (CW)
----	HOT WATER (HW)
----	HOT WATER RECIRCULATED (HWR)
----	SOIL OR WASTE (AFF)
----	SOIL OR WASTE (BURIED)
----	VENT LINE
— —	UNION JOINT
— —	FLANGE JOINT
— —	"Y" STRAINER
— —	TEE - UP, BRANCH OUT OF TOP
— —	TEE - DOWN, BRANCH OUT OF BOTTOM
FD	FLOOR DRAIN & TRAP (TYPE AS NOTED)
— —	GATE VALVE
— —	BALL VALVE
— —	CHECK VALVE
WHA 'B'	(SIZE)
●	POINT OF CONNECTION TO EXISTING

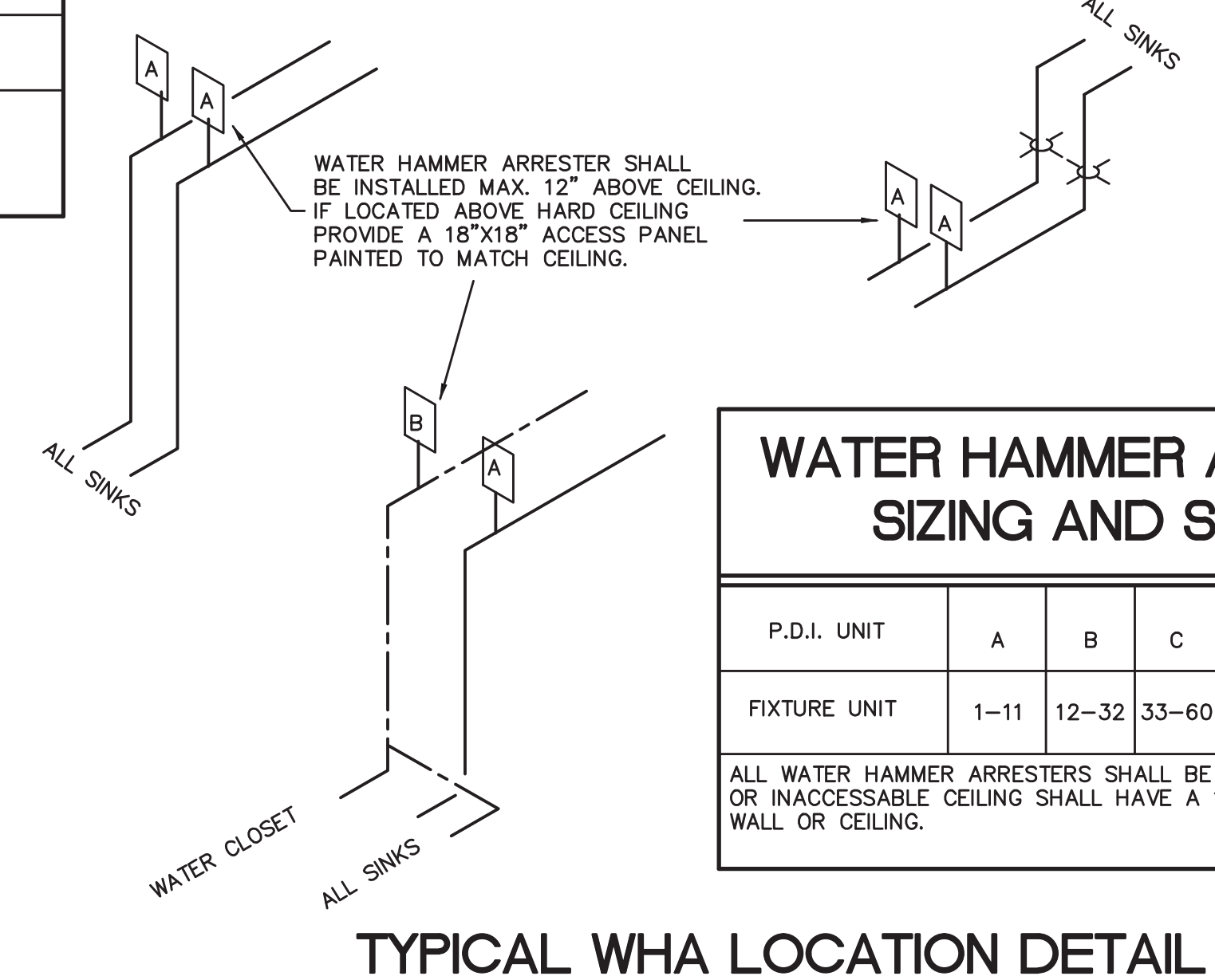
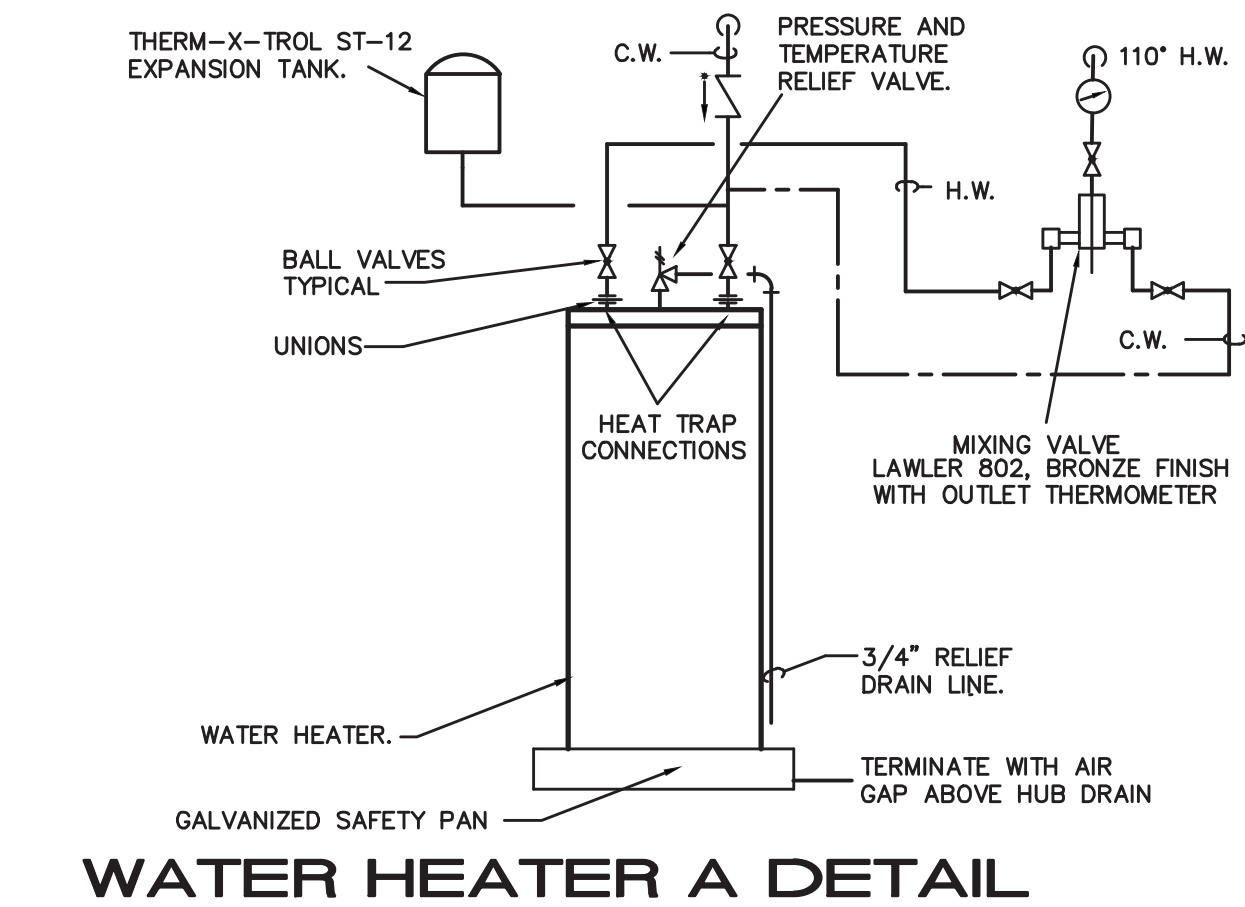
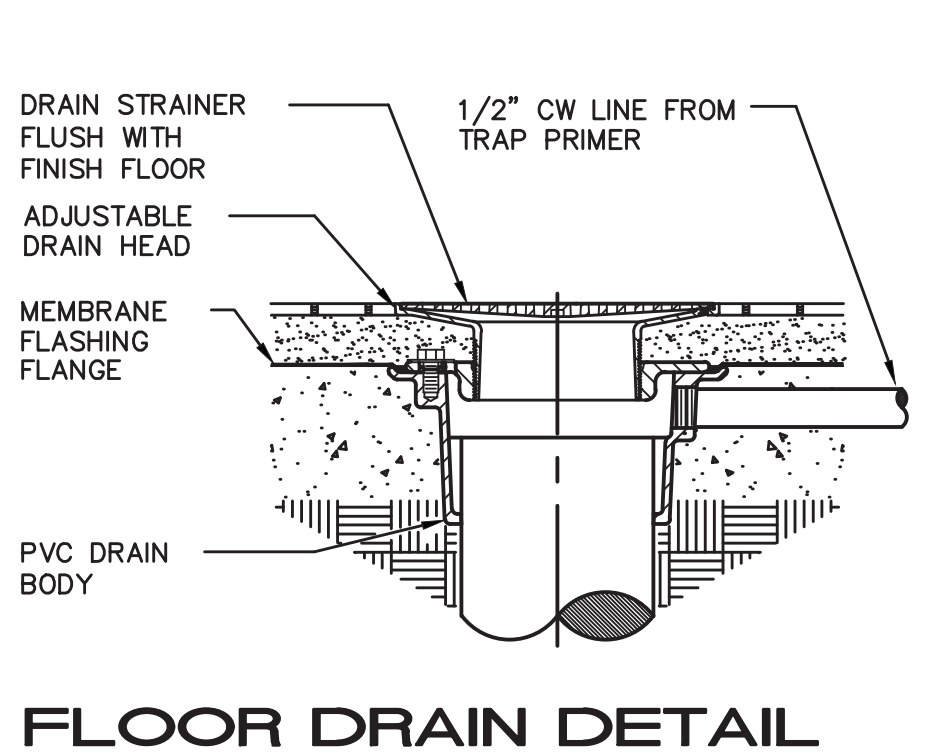
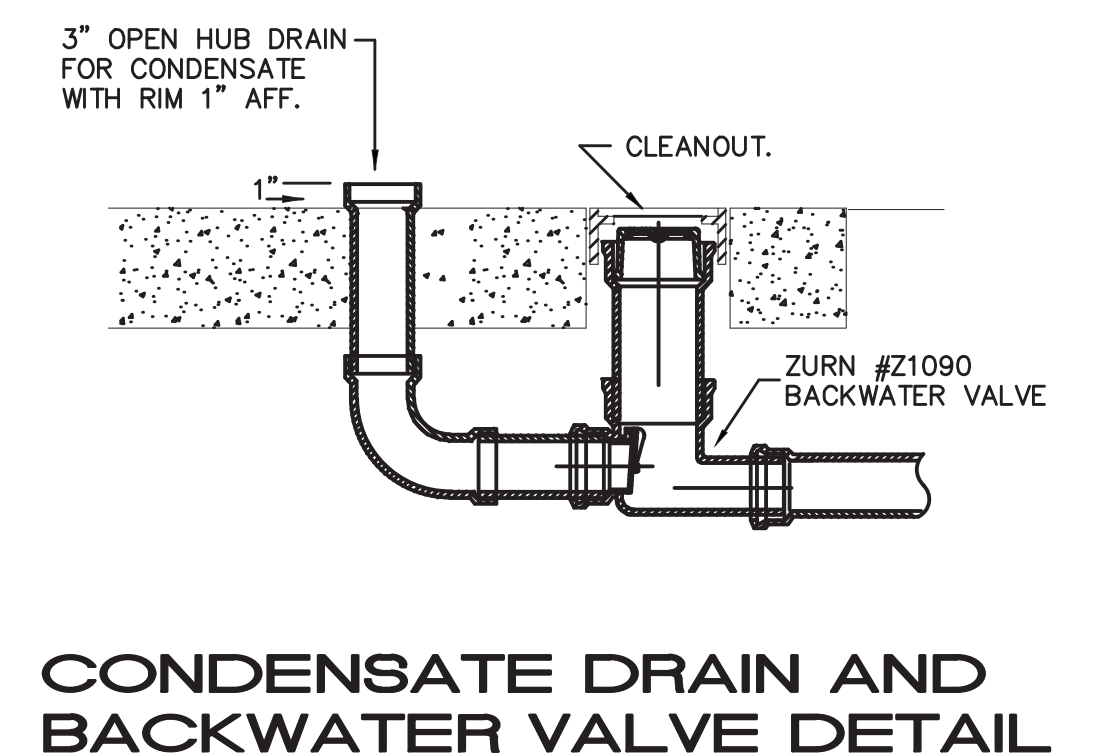
PLUMBING FIXTURE SCHEDULE													
MARK	DESCRIPTION	MANUFACTURER	MODEL	FITTINGS OR VALVES	SUPPLIES	TRAP	CARRIER	ACCESSORIES	COLD	HOT	WASTE	VENT	REMARKS
WC-2	ADA WATER CLOSET: Wall mounted siphon jet, rear spud 1.6 gallon, ADA height	American Standard	#3353.001 "Afwall"	Sloan #144-1.6	N/A	N/A	J.R. Smith #0210 Series	American Standard #5905100-020	1-1/4"		4"	2"	
WC-1	WATER CLOSET: Wall mounted siphon jet, rear spud 1.6 gallon, ADA height	American Standard	#3353.001 "Afwall"	Sloan #144-1.6	N/A	N/A	J.R. Smith #0210 Series	American Standard #5905100-020	1-1/4"		4"	2"	
UR-1	ADA URINAL: Wall mounted, vitreous china, 1 gallon per flush, with back spud See Architectural plans for location of ADA urinal	American Standard	#6515.001 "Washbrook"	Sloan #195-1.0	N/A	N/A	J.R. Smith #0616		1/2"		2"	1-1/2"	
LAV-2	ADA LAVATORY: Cold water only, wall mounted with floor mounted concealed arm carrier, Single hole, 20 inch x 18 inch, 0.5 gpm	American Standard	#0356.421 "Lucerne"	Chicago #807-E2805-665PSHCP	McGuire #158LK	McGuire #8088	J.R. Smith #710	Offset Grid Drain McGuire #155-WC	1/2"		1-1/4"	1-1/2"	Provide Truebro #101 LAV-GUARD Kit with #105 Accessory in white
LAV-1	COUNTERTOP LAVATORY: 19 inch diameter countertop mounted, vitreous china, cold water only, Single hole 0.5 gpm	American Standard	#0490.156 "Rondalyn"	Chicago #807-E2805-665PSHCP	McGuire #158LK	McGuire #8088	N/A	Offset Grid Drain McGuire #155-WC	1/2"		1-1/4"	1-1/2"	
MOP-1	MOP SINK: Basin: 24 inch x 24 inch x 10 inch one piece molded stone corner mop sink with 3" stainless steel drain body, dome strainer and lint basket.	Fiat	#MSB-2424	#830-AA	1/2" copper	2" DWV P-Trap	N/A	#832-AA Hose, #889-CC Mop Hanger	1/2"	1/2"	1-1/4"	1-1/2"	#MSB-2424 S.S. Wall Guards
EWC-1	DUAL ELECTRIC WATER COOLER: Wall mounted, Two-level, electric water cooler rated for outdoor use with remote chiller.	Elkay	#EDFP217C		McGuire #158LK	N/A	Wall Box	Remote Chiller Elkay #ECH8	1/2"		1-1/4"	1-1/2"	
SH-1	ADA SOWER: Valve with ADA wrist blade handle, with ADA Hand shower and 24" glide rail	Leonard	#4500-501P(G)	N/A	N/A	N/A	N/A		1/2"	1/2"			
SH-2	SHOWER: Metering valve pushbutton type, with vandal proof shower head	Leonard	#LV477B-3 Metering valve	Leonard #H-06-1.5 Shower Head	Mixing valves	N/A	N/A		1/2"	1/2"			

PLUMBING NOTES		
1.	ALL WORK AND MATERIALS SHALL COMPLY WITH THE 2010 FLORIDA PLUMBING CODE AND ANY LOCAL CODES HAVING JURISDICTION.	
2.	FIELD VERIFY AND CONFIRM THE ACTUAL SIZE, LOCATION, AND ELEVATION OF EXISTING UTILITIES AND PLUMBING PIPING PRIOR TO INSTALLATION OR CONNECTION OF ANY NEW PIPING. ANY DISCREPANCIES OR POSSIBLE CONFLICTS SHALL BE BROUGHT TO THE ATTENTION OF THE ENGINEER AND ARCHITECT.	
3.	DRAWINGS ARE DIAGRAMMATIC IN NATURE AND AS SUCH ALL FITTINGS AND OFFSETS MAY NOT BE INDICATED. PROVIDE FITTINGS AND OFFSETS AS REQUIRED TO PROVIDE A COMPLETE AND PROPERLY INSTALLED PLUMBING SYSTEM.	
4.	CONFIRM LOCATIONS AND ELEVATIONS OF ALL CROSSING LINES PRIOR TO INSTALLATION OF NEW PIPING. GRAVITY DRAIN PIPING ROUTING SHALL TAKE PRECEDENCE OVER PRESSURIZED PIPE SYSTEMS. PROVIDE OFFSETS AS REQUIRED. ANY DISCREPANCIES OR POSSIBLE CONFLICTS SHALL BE BROUGHT TO THE ENGINEER AND ARCHITECT.	
5.	COORDINATE PLUMBING SYSTEMS INSTALLATION WITH ALL OTHER INVOLVED TRADES, SUCH AS FIRE PROTECTION, MECHANICAL DUCTWORK AND PIPING, AND ELECTRICAL SYSTEMS. THIS CONTRACTOR SHALL OBTAIN COPIES OF THE LATEST PLANS, SPECIFICATIONS, AND ADDENDUMS OF ALL OTHER TRADES TO COORDINATE THESE SYSTEMS WITH OTHER TRADES INSTALLATIONS.	
6.	PROVIDE SHUT OFF VALVES IN COLD WATER LINES SERVING EACH GROUP TOILET ROOM AND EACH SINGLE TOILET ROOM. LOCATE THE VALVES IN AN ACCESSIBLE LOCATION. WHEN INSTALLED ABOVE CEILINGS, LOCATE ABOVE A LAY-IN CEILING TILE, OR IN HARD CEILINGS PROVIDE A HINGED ACCESS PANEL SIZED TO ALLOW FULL ACCESS TO THE VALVES (MINIMUM SIZE 18" X 18"). PROVIDE A LABEL ON THE CEILING TILE GRID OF ON THE ACCESS PANEL INDICATING "HOT AND COLD WATER SHUT OFF VALVES".	
7.	THE POTABLE WATER SYSTEMS IN THIS FACILITY SHALL BE DISINFECTED IN ACCORDANCE WITH THE FLORIDA BUILDING CODE AND APPLICABLE SPECIFICATION SECTIONS INCLUDED IN THE DESIGN PACKAGE. DISINFECT ALL NEW PORTIONS OF PIPING AND ALSO ANY EXISTING PIPING THAT HAS LOST PRESSURE DURING CONSTRUCTION.	
8.	PIPE HANGERS FOR COPPER PIPING SHALL BE COPPER TYPE OR VINYL COATED. HANGERS FOR OTHER TYPES OF PIPING SHALL BE GALVANIZED OR ZINC PLATED. PROVIDE MISCELLANEOUS STRUCTURAL STEEL CROSSMEMBER TO SPAN ACROSS BEAMS, JOIST, OR PURLINS WHERE REQUIRED FOR INTERMEDIATE SUPPORT.	
9.	PROVIDE A 2" HIGH GALVANIZED SAFETY PAN BELOW ALL WATER HEATERS. PROVIDE A 3/4" DRAIN LINE FROM THE SAFETY PAN AND TERMINATE OVER NEAREST FLOOR DRAIN OR SERVICE SINK. ROUTE COPPER DISCHARGE LINE FROM WATER HEATER PRESSURE TEMPERATURE RELIEF VALVE AND TERMINATE OVER SAFETY PAN.	
10.	PRESSURE TEST PLUMBING PIPING SYSTEMS PRIOR TO CONCEALMENT IN ACCORDANCE WITH THE SPECIFICATIONS. A. WATER PIPING SHALL BE TESTED AT 100 PSI MINIMUM FOR A PERIOD OF 8 HOURS. B. SANITARY AND STORM SYSTEMS SHALL BE TESTED AT 10 FEET OF HEAD PRESSURE FOR A PERIOD OF 8 HOURS.	
11.	PROVIDE WATER HAMMER ARRESTERS THROUGHOUT THE WATER PIPING SYSTEM LOCATED TO PREVENT ANY WATER HAMMER VIBRATIONS AND NOISE. PROVIDE WATER HAMMER ARRESTERS IN HOT WATER AND COLD WATER PIPES. LOCATE AT ALL GROUP RESTROOMS, SINGLE RESTROOMS, IN PIPING SERVING FLUSH VALVES, AND IN PIPING SERVING OTHER FIXTURES OR EQUIPMENT THAT HAS QUICK CLOSING VALVES OR ACTUATORS THAT WOULD CAUSE POTENTIAL WATER HAMMER. DO NOT PROVIDE PIPE AIR CHAMBERS AT PLUMBING FIXTURES AS THESE ARE NOT AN ACCEPTABLE ALTERNATE TO WATER HAMMER ARRESTERS.	
12.	PROVIDE TRAP PRIMERS FOR ALL FLOOR DRAINS. TRAP PRIMER LINE SHALL CONNECT FROM THE DISCHARGE SIDE OF A WATER CLOSET FLUSH VALVE. IF A FLUSH VALVE IS NOT READILY AVAILABLE, CONNECT TRAP PRIMER LINE FROM THE TAILPIECE OF A LAVATORY. OTHERWISE, PROVIDE AN AUTOMATIC TRAP PRIMER VALVE AND DISTRIBUTION UNIT FROM AN AVAILABLE COLD WATER LINE. IN FINISHED SPACES SUCH AS RESTROOMS, ROUTE THE TRAP PRIMER LINE BACK INTO THE WALL AND PROVIDE A CHROME PLATED ESCUTCHEON PLATE. THEN DROP TO BELOW FLOOR TO THE FLOOR DRAIN. IN UNFINISHED SPACES SUCH AS MECHANICAL ROOMS, ROUTE THE TRAP PRIMER LINE DOWN ALONG THE WALL SURFACE TO BELOW FLOOR TO THE FLOOR DRAIN. ALL TRAP PRIMER LINES IN WALLS AND BELOW FLOORS SHALL BE WRAPPED WITH PROTECTIVE INSULATING TAPE TO PREVENT CONTACT BETWEEN THE PIPE AND CONCRETE OR BELOW FLOOR SOIL.	
13.	ALL HOSE BIBBS AND WALL HYDRANTS SHALL BE EQUIPPED WITH AN INTEGRAL VACUUM BREAKER. PROVIDE A SHUT OFF VALVE IN THE WATER SUPPLY PIPE SERVING EACH HOSE BIBB AND WALL HYDRANT. INTERIOR BIBBS SHALL BE MOUNTED 12" ABOVE FLOOR, EXTERIOR BIBBS SHALL BE LOCATED 12" ABOVE GRADE.	
14.	THIS CONTRACTOR SHALL COORDINATE EXACT LOCATION AND QUANTITY OF FLOOR DRAINS WITH THE ARCHITECTURAL PLANS. COORDINATE LOCATIONS OF MECHANICAL ROOMS FLOOR DRAINS AND HUB DRAINS FOR HVAC EQUIPMENT CONDENSATE DISCHARGE WITH THE MECHANICAL CONTRACTOR AND THE EXACT LOCATION OF ANY HVAC EQUIPMENT AND CONCRETE PADS.	
15.	ALL HANDICAP ACCESSIBLE PLUMBING FIXTURES SHALL COMPLY WITH THE AMERICANS WITH DISABILITIES ACT (ADA). COORDINATE HANDICAP ACCESSIBLE FIXTURE WITH THE ARCHITECTURAL DRAWINGS AND PLAN REQUIREMENTS PRIOR TO ORDERING PLUMBING FIXTURES. BRING ANY DISCREPANCIES TO THE ATTENTION OF THE ENGINEER AND ARCHITECT.	
16.	ALL PIPES, PIPE FITTINGS, PLUMBING FITTINGS AND PLUMBING FIXTURES SHALL MEET THE REDUCTION OF LEAD IN DRINKING WATER ACT. ALL COMPONENTS SHALL MEET THE REQUIREMENT OF NO MORE THAN 0.25 PERCENT LEAD ON ALL POTABLE WETTED SURFACES.	

WATER HEATER SCHEDULE								
DESIGNATION	MFG./MODEL	STORAGE CAP. (GAL.)	RECOVERY CAPACITY	GAS		ELECTRICAL	WATER CONN.	ACCESSORIES
				TYPE	PIPE CONN.			
A	LOCHINVAR LTA030L	30	28 G.P.H. @ 60° RISE	-	-	4 240/1	3/4"	P & T RELIEF VALVE

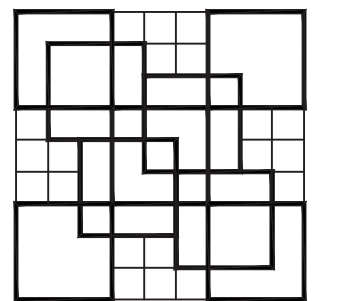
NOTE: VERIFY ALTERNATE MANUFACTURER WILL FIT IN SPACE ALLOCATED FOR WATER HEATER

FLOOR DRAIN SCHEDULE							
MARK	SELECTION BASED ON		SIZE	PIPE CONNECTION	TOP MATERIAL	ACCESSORIES	REMARKS
	MAKE	MODEL					
FD	ZURN	ZB415-6S-P	6"	3"	NICKLE BRONZE	PRIMER TAP	-



WATER HAMMER ARRESTER (WHA) SIZING AND SELECTION						
P.D.I. UNIT	A	B	C	D	E	F
FIXTURE UNIT	1-11	12-32	33-60	61-113	114-154	155-330

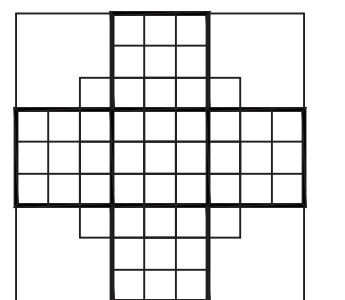
ALL WATER HAMMER ARRESTERS SHALL BE ACCESSIBLE. WHA'S LOCATED IN A CHASE OR INACCESSIBLE CEILING SHALL HAVE A 18"X18" ACCESS PANEL PAINTED TO MATCH WALL OR CEILING.



COLOME & Associates, Inc.
AA 0003439
 8500 24TH STREET
 WEST PALM BEACH
 FLORIDA 33407
 (561) 833-9147



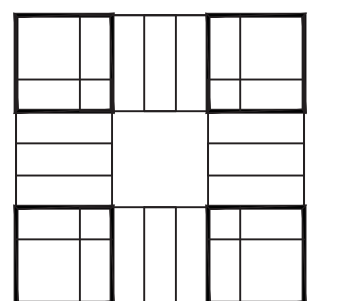
JOHNSON, LEVINSON
 RAGAN, DAVILA, INC.
 CONSULTING ENGINEERS
 1180 Connaught Boulevard, Suite 100
 West Palm Beach, Florida 33401
 (561) 689-2313 (Tel) (561) 689-2312 Fax
 www.jlr.com
 Certification Number 0659
 Michael P. Lindon, P.E. #98094
 Charles C. Gableman, P.E. #91936



P.B.C.
 R.Q. KREIBLER PARK
**RESTROOM BUILDING
 AND ENTRY DRIVE
 MODIFICATIONS**
PBC NO 14204
2006 SOUTH OCEAN BLVD.

LAKE WORTH FLORIDA

PROJECT NO.
 201402
 JLRD NO.
 115042



SHEET TITLE:

REVISIONS:

DATE
 1/20/15
 DRAWN BY:
 RMT
 CHECKED BY:
 GBO

SHEET NUMBER: