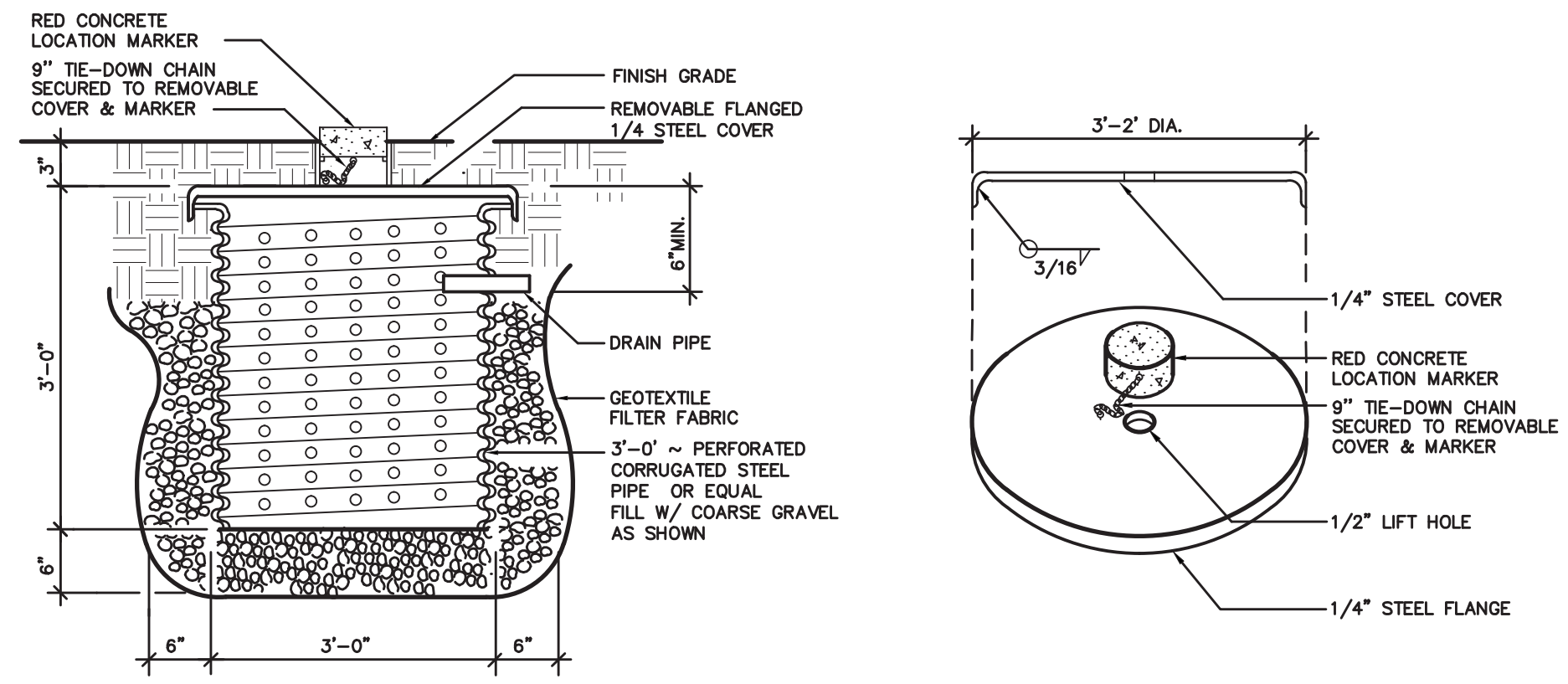
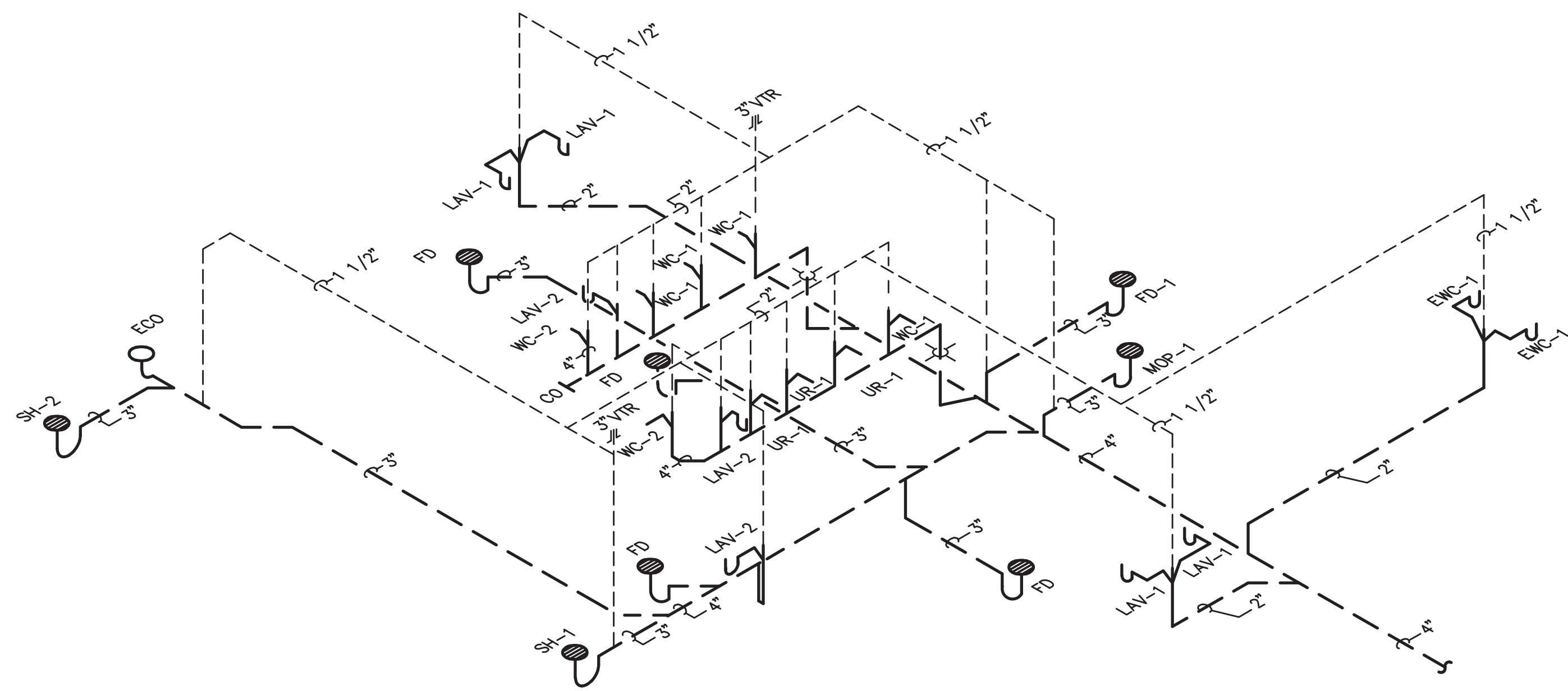


The information contained herein is the property of Johnson, Levinson, Ragan, Davila, Inc. (JLRD) and is intended for copyright. Unauthorized use is prohibited. JLRD makes no warranty or guarantee as to the accuracy or completeness of the information contained herein, use without full verification is at the user's sole risk. The user hereby represents, warrants, and agrees that use shall be confined to the specific conditions.

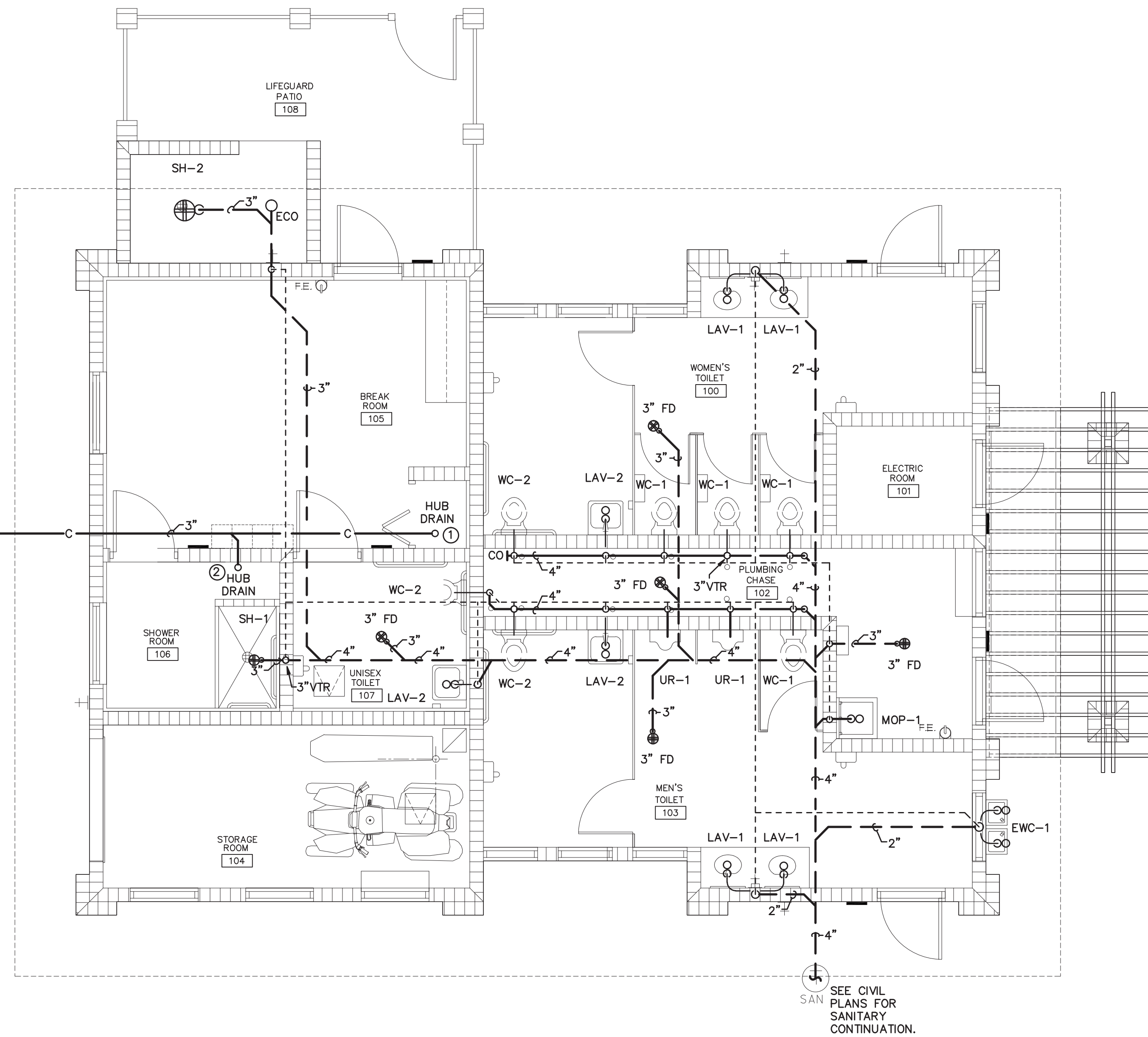
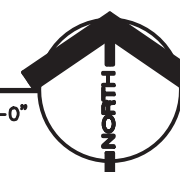


**CONDENSATE DRYWELL**



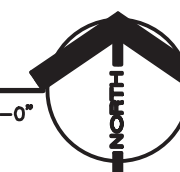
**2 PLUMBING FLOOR PLAN - WASTE RISER DIAGRAM**

SCALE: 1/4"=1'-0"



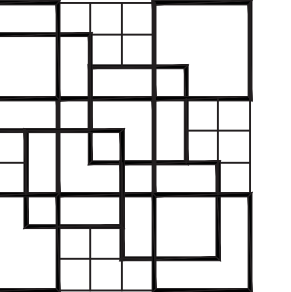
**1 PLUMBING FLOOR PLAN - WASTE PLAN**

SCALE: 1/4"=1'-0"



**NEW WORK NOTES**

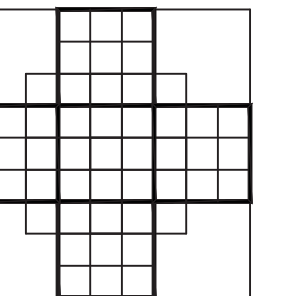
- ① COORDINATE EXACT LOCATION OF HUB DRAIN WITH THE MECHANICAL CONTRACTOR PRIOR TO INSTALLATION.
- ② HUB DRAIN FOR DRAIN PAN AND PRESSURE RELIEF VALVE. COORDINATE EXACT LOCATION OF HUB DRAIN WITH WATER HEATER PRIOR TO INSTALLATION.



**COLOME & Associates, Inc.**  
AA 0003439  
8500 24TH STREET  
WEST PALM BEACH  
FLORIDA 33411  
(561) 833-9147



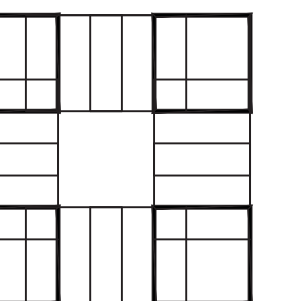
**JOHNSON, LEVINSON  
RAGAN, DAVILA, INC.**  
CONSULTING ENGINEERS  
180 Connaught Boulevard, Suite 100  
West Palm Beach, Florida 33411  
(561) 689-2313 (Tel) (561) 689-2312 Fax  
www.jlr.com  
Certification Number 06599  
Michael P. Linden, P.E. #58094  
Charles C. Gableman, P.E. #51916



**F.B.C.  
R.G. KREUBLER PARK  
RESTROOM BUILDING  
AND ENTRY DRIVE  
MODIFICATIONS**  
PBC NO 14204  
2886 SOUTH OCEAN BLVD.

LAKE WORTH  
FLORIDA

PROJECT NO.  
201402  
JLRD NO.  
115042



**SHEET TITLE:  
SANITARY PLAN  
AND RISER  
DIAGRAM**

REVISIONS:

DATE  
11/20/15  
DRAWN BY:  
RMT  
CHECKED BY:  
GBO

SHEET  
NUMBER:

**P-2**