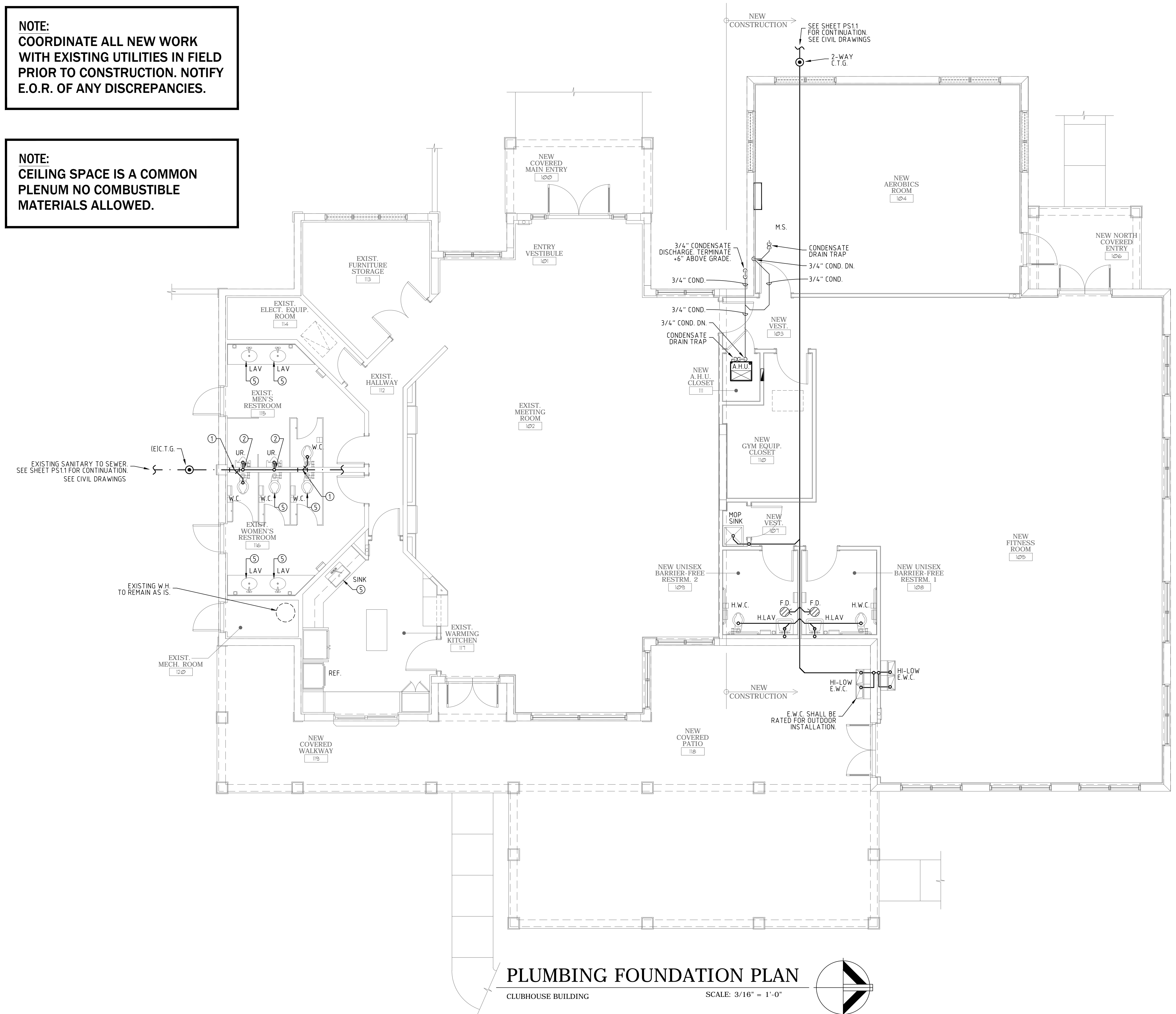


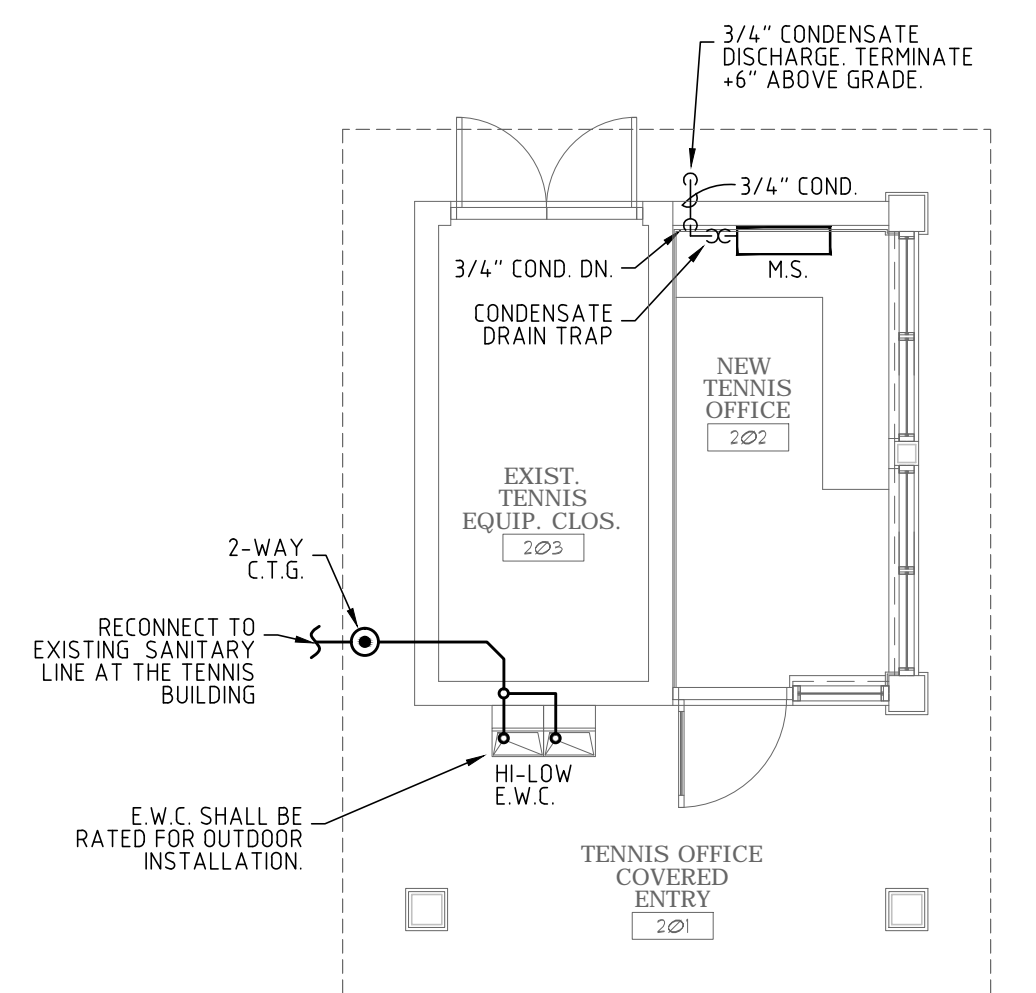
**NOTE:**  
COORDINATE ALL NEW WORK WITH EXISTING UTILITIES IN FIELD PRIOR TO CONSTRUCTION. NOTIFY E.O.R. OF ANY DISCREPANCIES.

**NOTE:**  
CEILING SPACE IS A COMMON PLENUM NO COMBUSTIBLE MATERIALS ALLOWED.



**PLUMBING FOUNDATION PLAN**  
CLUBHOUSE BUILDING  
SCALE: 3/16" = 1'-0"

- PLUMBING KEY NOTES**
- CONNECT NEW 3" SANITARY PIPE TO EXISTING SANITARY PIPE BELOW SLAB. VERIFY EXACT LOCATION, SIZE, INVERT, DIRECTION OF FLOW & CONNECTION POINT IN FIELD PRIOR TO CONSTRUCTION.
  - CONNECT NEW 2" SANITARY WASTE STACK VENT TO EXISTING SANITARY PIPE BELOW SLAB. VERIFY EXACT LOCATION, SIZE, INVERT, DIRECTION OF FLOW & CONNECTION POINT IN FIELD PRIOR TO CONSTRUCTION.
  - CONNECT NEW 2" VENT PIPE TO EXISTING VENT PIPE ABOVE CEILING. VERIFY EXACT LOCATION, SIZE & CONNECTION POINT IN FIELD PRIOR TO CONSTRUCTION.
  - CONNECT NEW 3/4" COLD WATER PIPE TO EXISTING COLD WATER PIPE, SERVING THE EXISTING WATER HEATER IN THE STORAGE CLOSET. VERIFY EXACT LOCATION, SIZE & CONNECTION POINT IN FIELD PRIOR TO CONSTRUCTION.
  - EXISTING FIXTURE TO BE REPLACED WITH NEW IN SAME LOCATION. CONNECT TO EXISTING PLUMBING PIPES BELOW SLAB, IN WALL AND/OR ABOVE CEILING. ALL EXISTING WATER AND DRAIN LINES TO BE REROUTED AND RECONNECTED ACCORDINGLY. VERIFY EXACT LOCATION, SIZE, INVERT, DIRECTION OF FLOW & CONNECTION POINT IN FIELD PRIOR TO CONSTRUCTION.



**PLUMBING FOUNDATION PLAN**  
TENNIS BLDG. NEW OFFICE  
SCALE: 3/16" = 1'-0"

REVISIONS	BY

**Slattery & Associates**  
ARCHITECTS  
PLANNERS  
2060 NW BOCA RATON BLVD.  
SUITE 2  
BOCA RATON, FL 33431  
TEL: 561-392-3848  
FAX: 561-392-5402  
WWW.SLATTERYARCHITECTS.COM

**WOODFIELD HUNT CLUB  
CLUBHOUSE RENOVATION  
AND EXPANSION**  
4420 WOODFIELD BLVD.  
BOCA RATON, FLORIDA

PERMIT SET: 07/21/16

**FAE CONSULTING**

700 WEST HILLSBORO BLVD., BLDG. #1, SUITE 204  
DEERFIELD BEACH, FLORIDA 33441  
TEL: (561) 391-9292 FAX: (561) 391-9898  
CERTIFICATE OF AUTHORIZATION NO. 28107  
URSULA IARRATE, P.E. LICENSE #73122  
STEPHEN F. ROLLIN, P.E. LICENSE #36428  
DONALD H. AUSTIN, JR., P.E. LICENSE #60651  
JASON BARBER, P.E. LICENSE #73050  
E-MAIL: INFO@FAECONSULTING.COM  
DESIGNED BY: DB/FR/AB PM: KS P/N: 16104

**PRIOR TO SUBMITTING THE BID, THE CONTRACTOR SHALL FIELD VERIFY ALL EXISTING CONDITIONS AND INFORM THE ARCHITECT AND THE ENGINEER OF ANY DISCREPANCY BETWEEN THESE DOCUMENTS AND THE EXISTING CONDITIONS AND SHALL INCLUDE IN THE BID TO CORRECT THE SAME AS DIRECTED. THE ENGINEER AND THE ARCHITECT, ARE NOT RESPONSIBLE FOR ANY ADDITIONAL COSTS RESULTING FROM VERIFIABLE EXISTING CONDITIONS DISCOVERED AFTER CONTRACT HAS BEEN AWARDED. NO CHANGES SHALL BE MADE TO THESE PLANS WITHOUT PRIOR APPROVAL FROM THE ENGINEER OF RECORD. ALL CHANGES SHALL BE SUBMITTED FOR REVIEW PRIOR TO INSTALLATION. NOT FOR BID UNTIL PERMIT HAS BEEN ISSUED.**

DRAWN DB/FR/AB  
CHECKED UI/SR/DA/JB  
DATE 07-21-16  
SCALE AS NOTED  
JOB NO. 16104  
SHEET

**P1.0**

PERMIT - 7-21-16

X:\2016 Projects\Slattery & Associates\16104\_Woodfield Hunt Club Renovation\MEP\16-06-30\_TN\16104\_P1.1.dwg, P1.0, 7/21/2016 4:34:02 PM, TNguyen