

Revisions:	
1	9-19-16 OWNER REVISION
2	
3	
4	
5	

Project Number
160412

1066 U.S. HIGHWAY 1
NEW RETAIL BUILDING - GOODWILL

1066 U.S. HIGHWAY 1
VERO BEACH, FLORIDA

Project Name
NEW RETAIL BUILDING

STEPHEN BRASGALLA, ARCHITECT
STATE OF FLORIDA
REGISTRATION NO. AR12239

6901 WEST BROWARD BOULEVARD
SUITE 100
PLANTATION, FLORIDA 33317

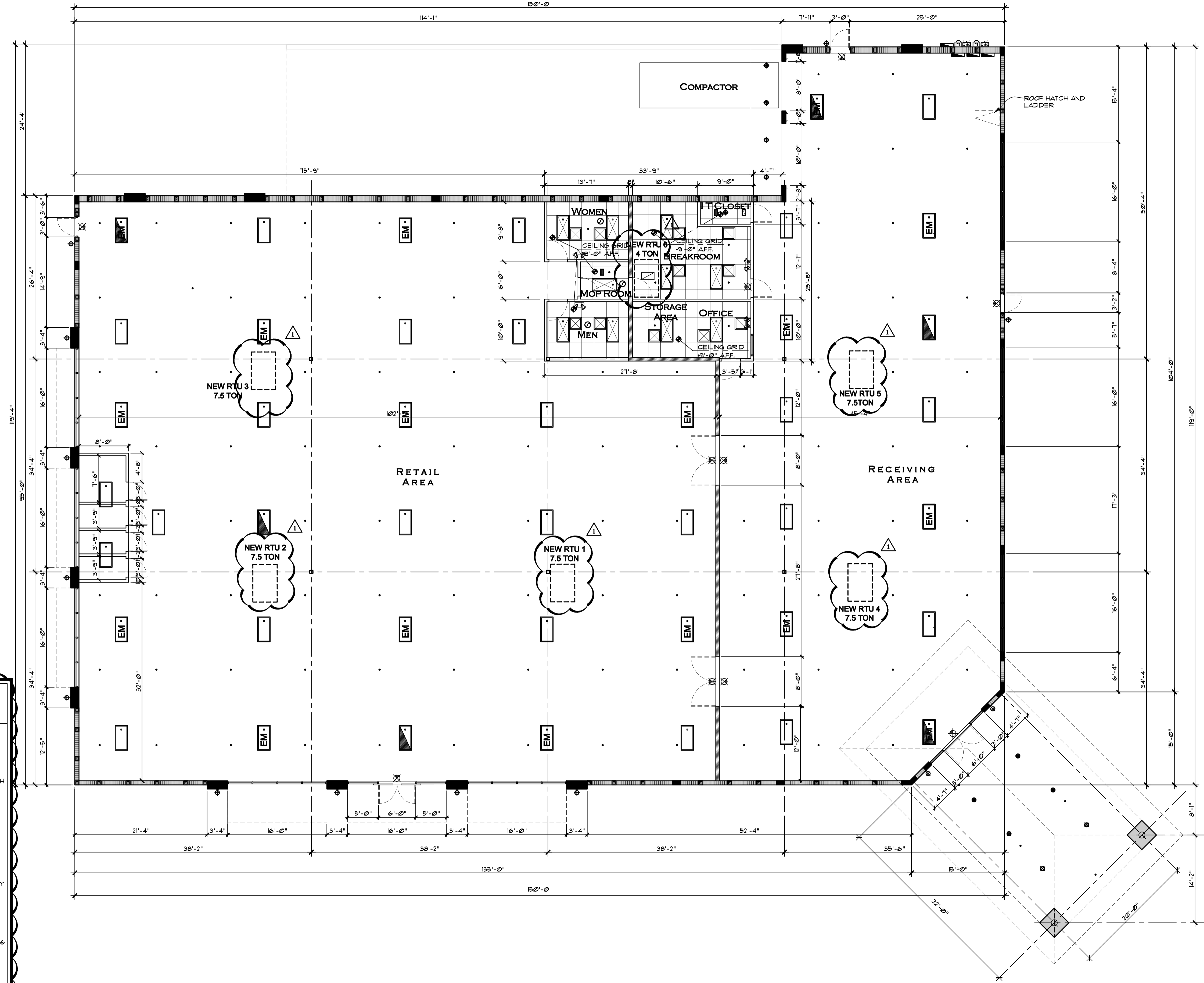
TELEPHONE 954.614.3801
TELEFAX 954.209.0800
ARCHITECT © DESIGN23.NET

CLIENT APPROVAL SET
9-19-16
(NOT FOR CONSTRUCTION)

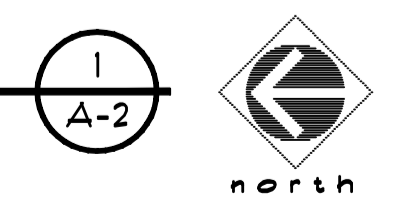
Drawn By: RSS	Checked By: STB
Scale: SHOWN	Date: 7-29-16

Project Number
160412

Sheet:
A-2



REFLECTED CEILING PLAN
SCALE: 1/8" = 1'-0"



FIXTURE TAG	QUANTITIES	SYMBOL LEGEND
A	27	INDICATES HE WILLIAMS MODAL GL-4-6-32-WD-VBY-2-EB3/3-UNV 2X4 6 LAMP TO FIXTURE
A-EM	17	INDICATES HE WILLIAMS MODAL GL-4-6-32-WD-VBY-2-EB3/3-UNV / EB-BATTERY 2X4 6 LAMP TO FIXTURE WITH EMERGENCY BATTERY
B	10	INDICATES HE WILLIAMS MODAL 50-G-8-2-4-4-32-5-A12/5-EB4-UNV 2X4 T8 4 LAMP FIXTURE
C	10	INDICATES BEGHELLI MODAL VA4-R-5A-AT LED EXIT SIGN WITH BATTERY BACKUP
D	4	INDICATES BEGHELLI MODAL 2 LAMP EMERGENCY FLOOD LIGHT WITH BATTERY BACKUP CATALOG NUMBER FEH-AT
E	13	INDICATES KICHLER 18" EXTERIOR LED WALL SCONCE CATALOG NUMBER 49598AZLED
F	--	INDICATES HE WILLIAMS MODAL GL-4-6-32-WD-VBY-2-EB3/3-UNV / 2X4 6 LAMP TO FIXTURE CIRCUITED FOR CONTINUOUS OPERATION ON LOCKED CIRCUIT (NIGHTLIGHT FUNCTION)
G	10	INDICATES LITON 6" RECESSED LED DOWNLIGHT EXTERIOR RATED UNDER AINING CATALOG NUMBER LRLDH42-UL / LSHLD616C35-UE / LRLDH42C-UL
		\$ INDICATES TYPICAL SWITCH
		\$ INDICATES 3 WAY SWITCH
		INDICATES HIGH CAPACITY EXHAUST FAN
		INDICATES HVAC SUPPLY DIFFUSER
		INDICATES HVAC RETURN AIR GRILLE
		INDICATES ELECTRICAL DISTRIBUTION PANEL