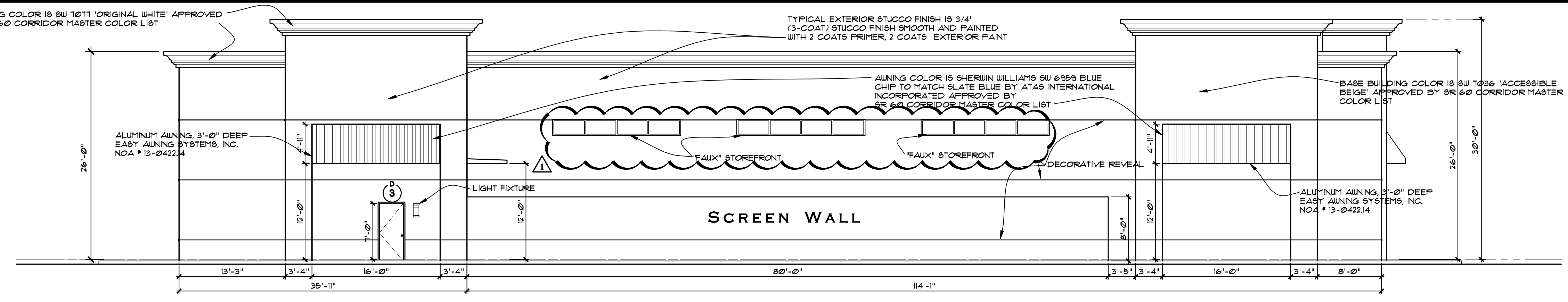
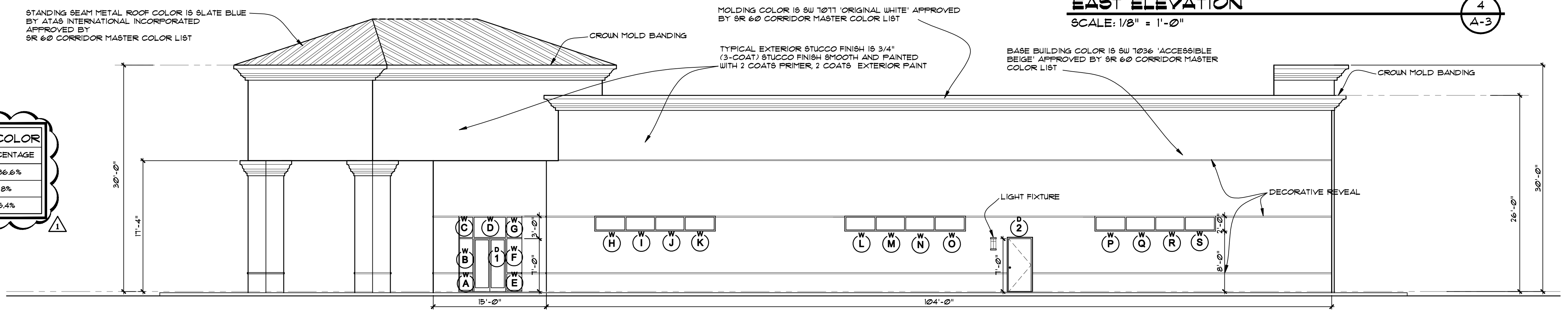


| PERCENTAGE OF EAST FACADE COLOR | |
|---------------------------------|------------|
| COLOR | PERCENTAGE |
| SW-6959 BLUE CHIP | 3.8% |
| SW-1036 ACCESSIBLE BEIGE | 88.6% |
| SW-1011 ORIGINAL WHITE | 7.6% |



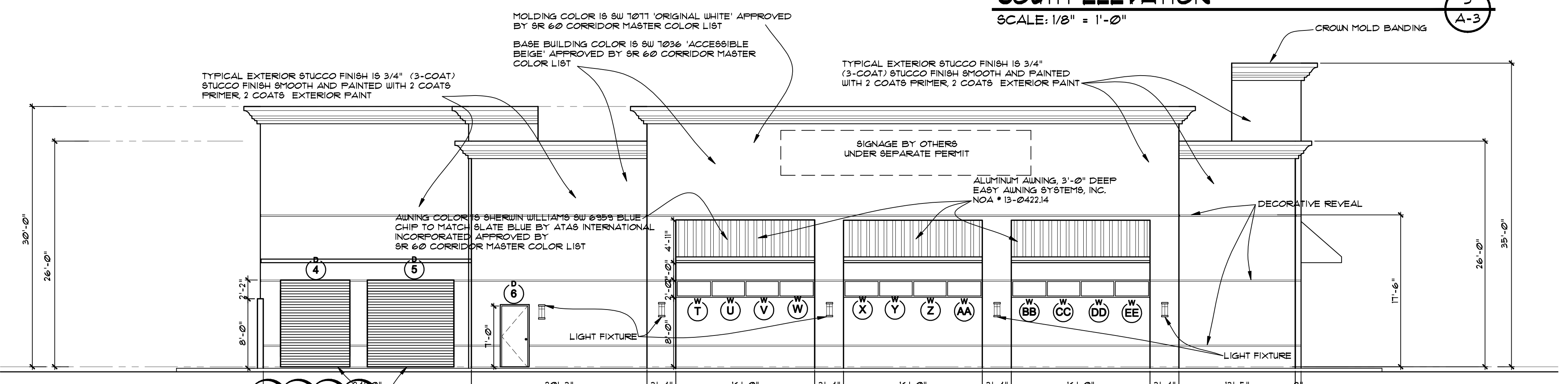
EAST ELEVATION
SCALE: 1/8" = 1'-0"

| PERCENTAGE OF SOUTH FACADE COLOR | |
|--------------------------------------|------------|
| COLOR | PERCENTAGE |
| SW-1036 ACCESSIBLE BEIGE | 86.6% |
| SW-1011 ORIGINAL WHITE | 8% |
| SLATE BLUE BY ATAS INTERNATIONAL INC | 5.4% |



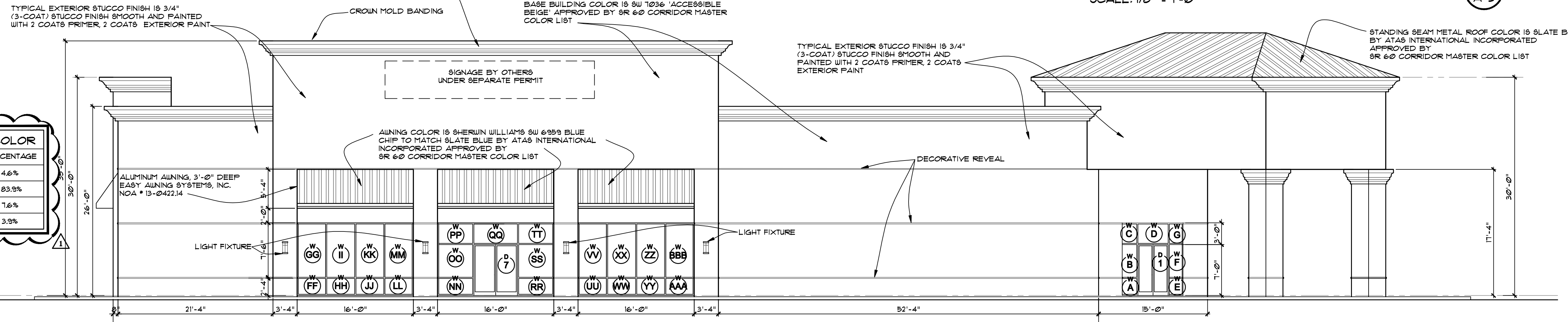
SOUTH ELEVATION
SCALE: 1/8" = 1'-0"

| PERCENTAGE OF NORTH FACADE COLOR | |
|----------------------------------|------------|
| COLOR | PERCENTAGE |
| SW-6959 BLUE CHIP | 5.8% |
| SW-1036 ACCESSIBLE BEIGE | 81.2% |
| SW-1011 ORIGINAL WHITE | 7% |



NORTH ELEVATION
SCALE: 1/8" = 1'-0"

| PERCENTAGE OF WEST FACADE COLOR | |
|--------------------------------------|------------|
| COLOR | PERCENTAGE |
| SW-6959 BLUE CHIP | 4.6% |
| SW-1036 ACCESSIBLE BEIGE | 83.3% |
| SW-1011 ORIGINAL WHITE | 7.6% |
| SLATE BLUE BY ATAS INTERNATIONAL INC | 3.3% |



WEST ELEVATION
SCALE: 1/8" = 1'-0"

Revisions:
 1 9-19-16 OWNER REVISION
 2
 3
 4
 5

Project Number
160412

Project Name
**1066 U.S. HIGHWAY 1
 NEW RETAIL BUILDING - GOODWILL**
 1066 U.S. HIGHWAY 1
 VERO BEACH, FLORIDA

Project Name
NEW RETAIL BUILDING

STEPHEN BRASGALLA, ARCHITECT
 STATE OF FLORIDA
 REGISTRATION NO. AR12239
 6901 WEST BROWARD BOULEVARD
 SUITE 100
 PLANTATION, FLORIDA 33317
 TELEPHONE 954.614.3801
 TELEFAX 954.209.0800
 ARCHITECT @ DESIGN23.NET

CLIENT APPROVAL SET
 9-19-16
 (NOT FOR CONSTRUCTION)

Drawn By: **RSS** Checked By: **STB**
 Scale: **SHOWN** Date: **7-29-16**

Project Number
160412

Sheet:
A-3