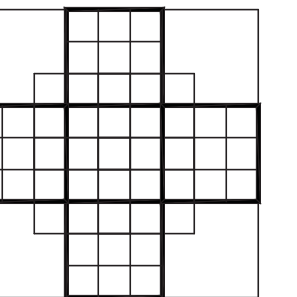


**COLOME**  
& Associates, Inc.  
AA 0003439  
530 24TH STREET  
WEST PALM BEACH  
FLORIDA 33407  
(561) 833-9147  
ARCHITECT: ELIZABETH A. & COLOME  
REG. NUMBER: AR 0014839

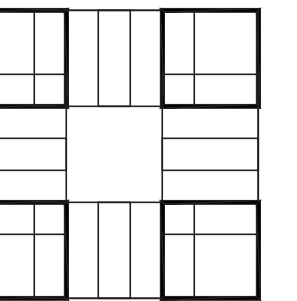


**P. B. C.**  
R.G. KREUSLER PARK  
RESTROOM BUILDING  
AND ENTRY DRIVE  
MODIFICATIONS

PBC NO 14204  
2686 SOUTH OCEAN BLVD.

LAKE WORTH  
FLORIDA

PROJECT NO.  
201402



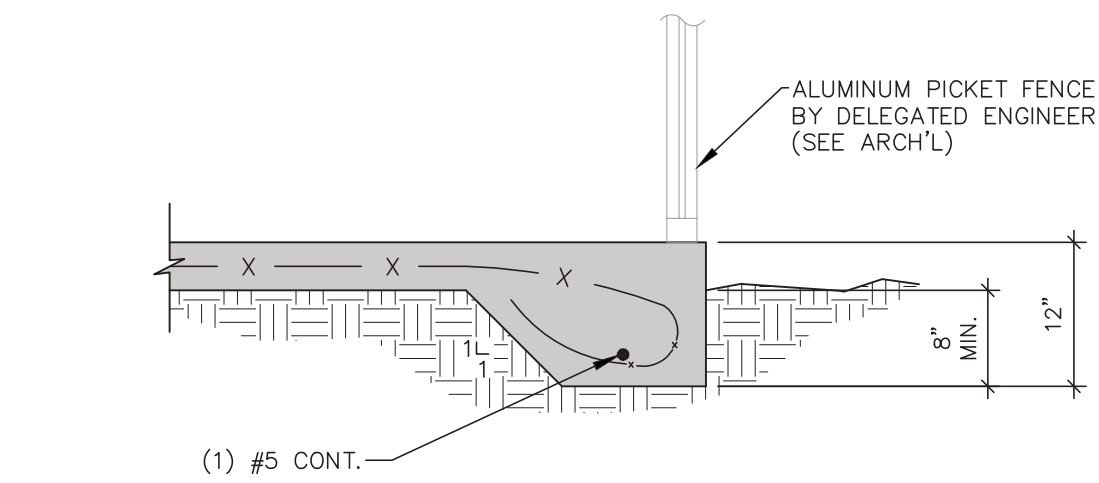
SHEET TITLE  
FOUNDATION PLAN

REVISIONS:

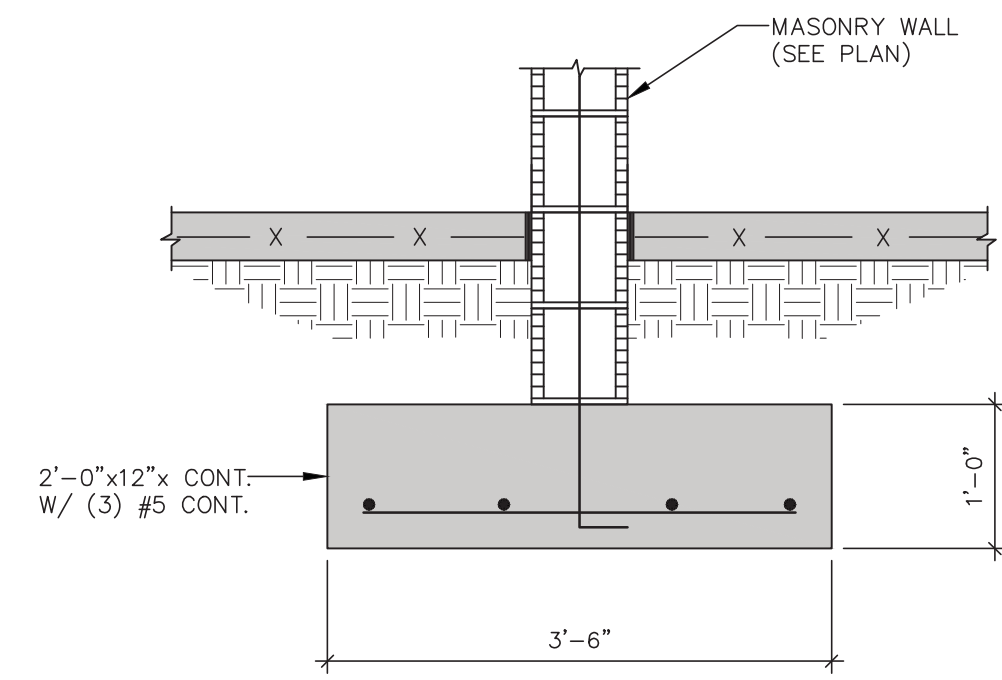
DATE  
11/20/15  
DRAWN BY:  
DG  
CHECKED BY:  
EP

SHEET  
NUMBER

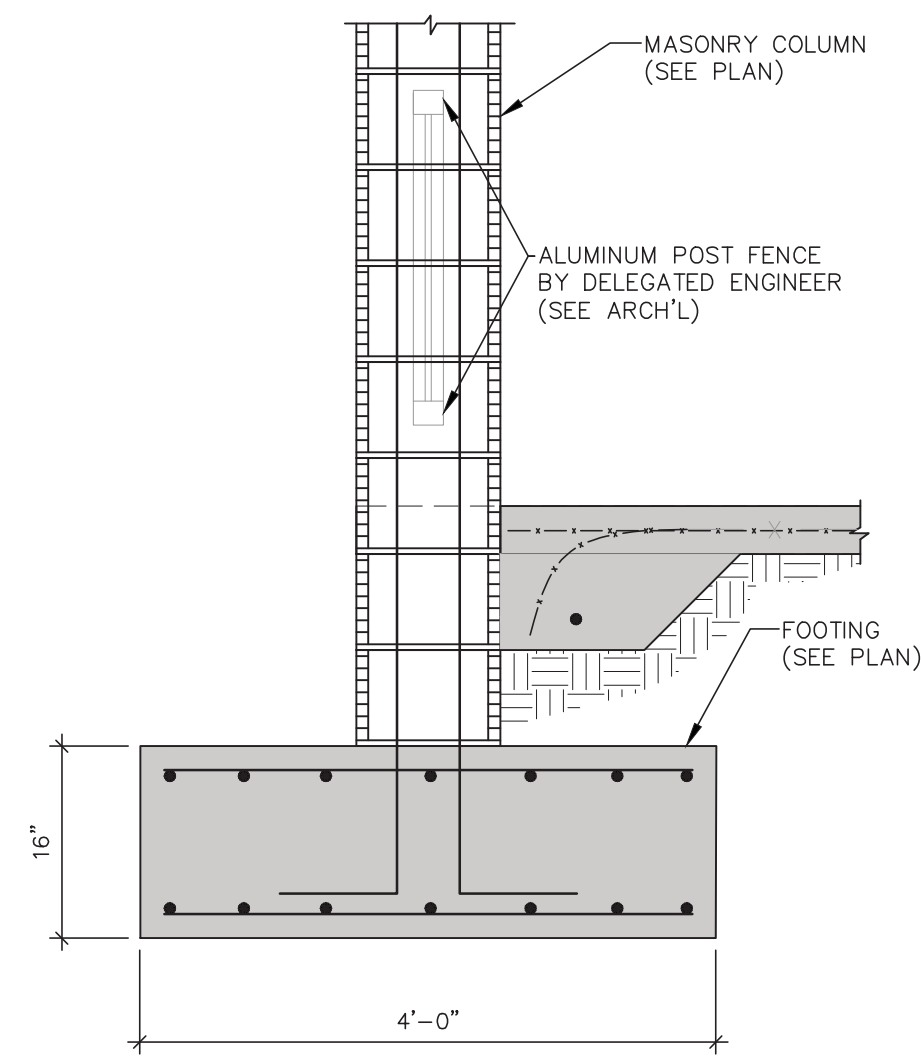
S-1



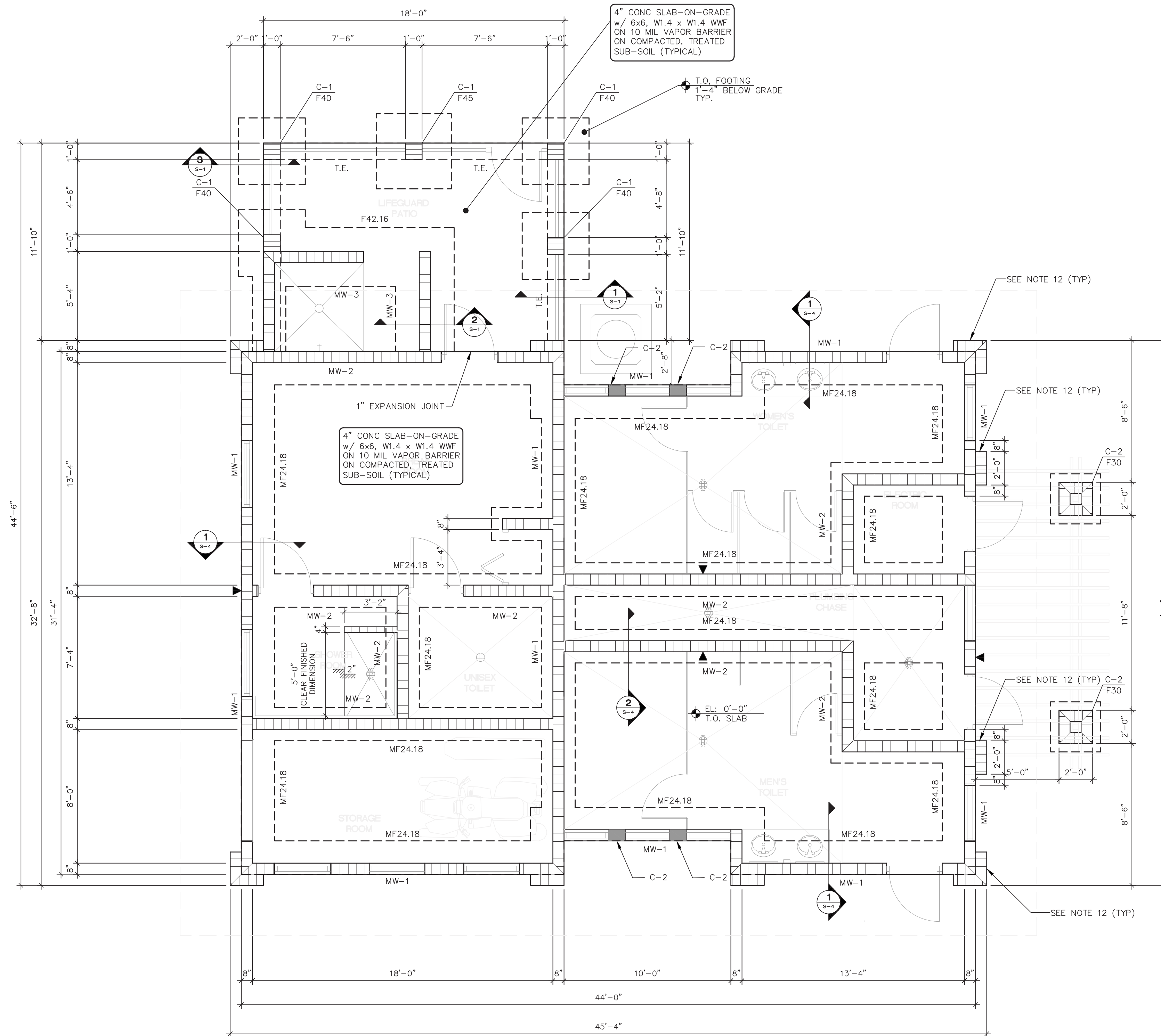
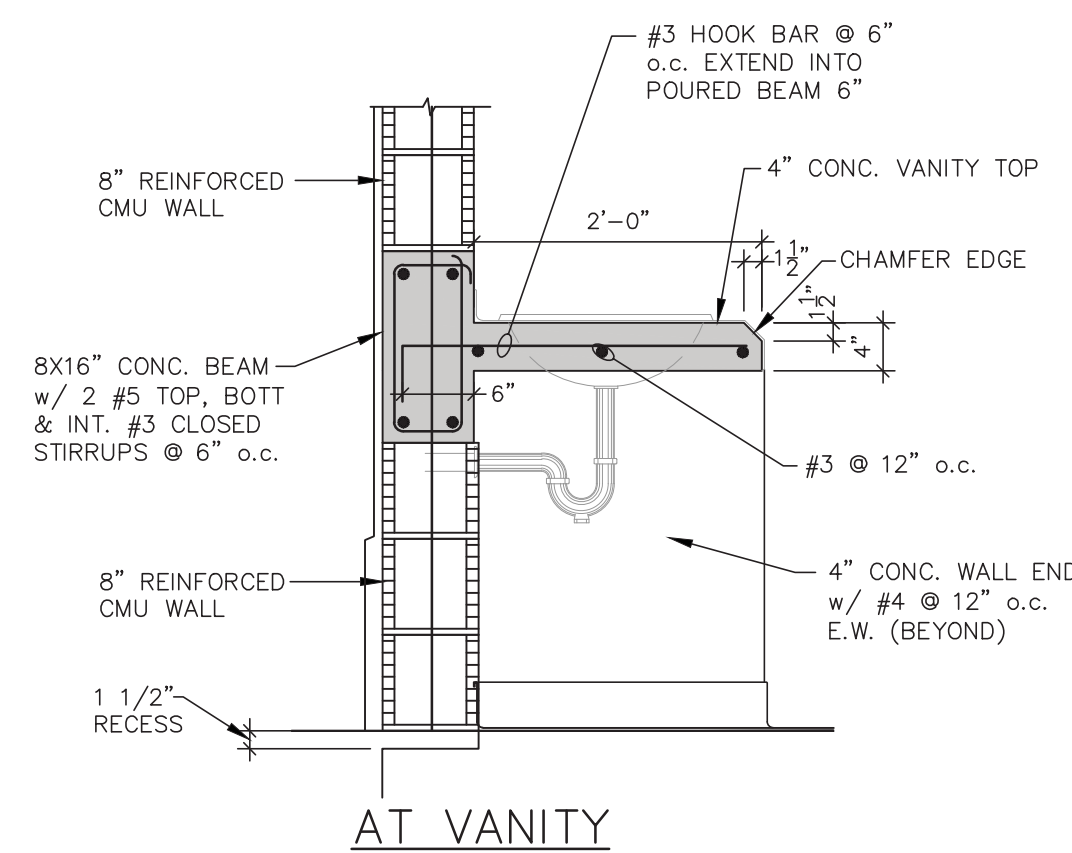
SECTION 1  
3/4"=1'-0"  
S-1



SECTION 2  
3/4"=1'-0"  
S-1



SECTION 3  
3/4"=1'-0"  
S-1



FOUNDATION PLAN  
1/4"=1'-0"  
N

**FOUNDATION PLAN NOTES:**

- TOP OF SLAB ELEVATION 0'-0" EQUALS ELEVATION, NGVD = 17.52' (CONFIRM W/ CIVIL DWGS)  
TOP OF FOOTINGS AS NOTED IN PLAN, UNLESS SHOWN OTHERWISE OR REVISED BY GEOTECHNICAL ENGINEER.
- FOR SLAB ON GRADE CONSTRUCTION, SEE GENERAL NOTES.
- SEE ARCH. DRAWINGS FOR LOCATION/ LIMITS AND CONSTRUCTION INFORMATION OF INTERIOR NON-BEARING PARTITION WALLS NOT SHOWN ON STRUCTURAL PLANS (VERIFY W/ ARCH). SEE GENERAL NOTES FOR ADDITIONAL WALL FRAMING INFORMATION.
- TERMITE POISON TREATMENT UNDER SLAB PER LOCAL CODE REQUIREMENTS.
- PROVIDE CORNER BARS WHERE ALL FOOTINGS CHANGE DIRECTION AND AT FOOTING INTERSECTIONS. SEE SECTIONS FOR FURTHER INFORMATION.
- ALIGN C.I. W/COLUMN ISOLATION JOINT WHERE POSSIBLE, OTHERWISE TERMINATE W/(2)#4X6'-0" LONG @ END OF C.I.
- COORDINATE LOCATIONS OF SLAB RECESSES W/ARCH'L DWGS.
- ▼ INDICATES MASONRY WALL CONTROL JOINT.
- ALL EXTERIOR MASONRY WALL TO BE MW-1 U.N.O.
- ALL INTERIOR MASONRY WALL TO BE MW-2 U.N.O.
- C-1 TO BE 12"x12" COLUMN BLOCK FULLY GROUTED W/ 4 #5 AND #2 TIES @ 8" o.c.
- EXTEND EDGE OF MONOLITHIC FOOTING TO EXTERIOR FACE OF WALL.
- SLOPE TO DRAINS (REFER TO ARCH'L DWGS)
- C-2 TO BE 8"x12" CONC. COLUMN W/ (4) #5 VERT. & #3 TIES @ 8" o.c.

PHILIP J. BIZZO  
P.E. FLORIDA  
REG. #60998

**ONM**  
O'Donnell, Naccarato, Mignogna & Jackson  
STRUCTURAL ENGINEERS  
221 15TH STREET, SUITE 200  
WEST PALM BEACH, FLORIDA 33401  
(561) 835-9994 FAX (561) 835-8255  
LIC. #0004386  
JOB # 271.081