

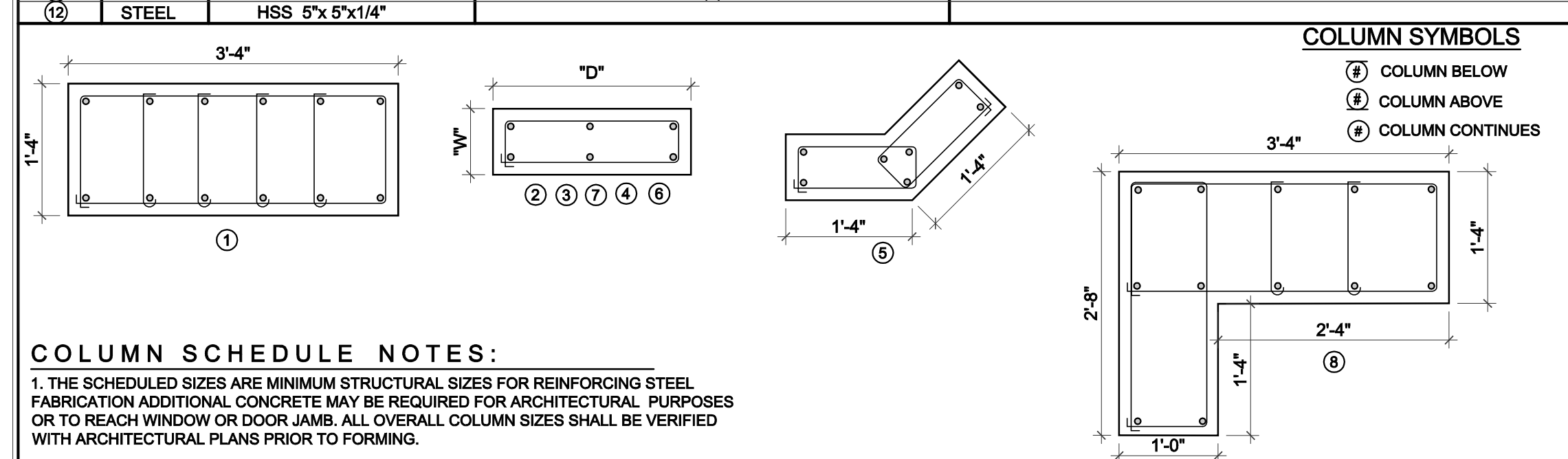
**FOOTING CONCRETE STRENGTH,  $f'_c = 3,000$  PSI**

**SOIL SAFE BEARING = 2500 PSF**

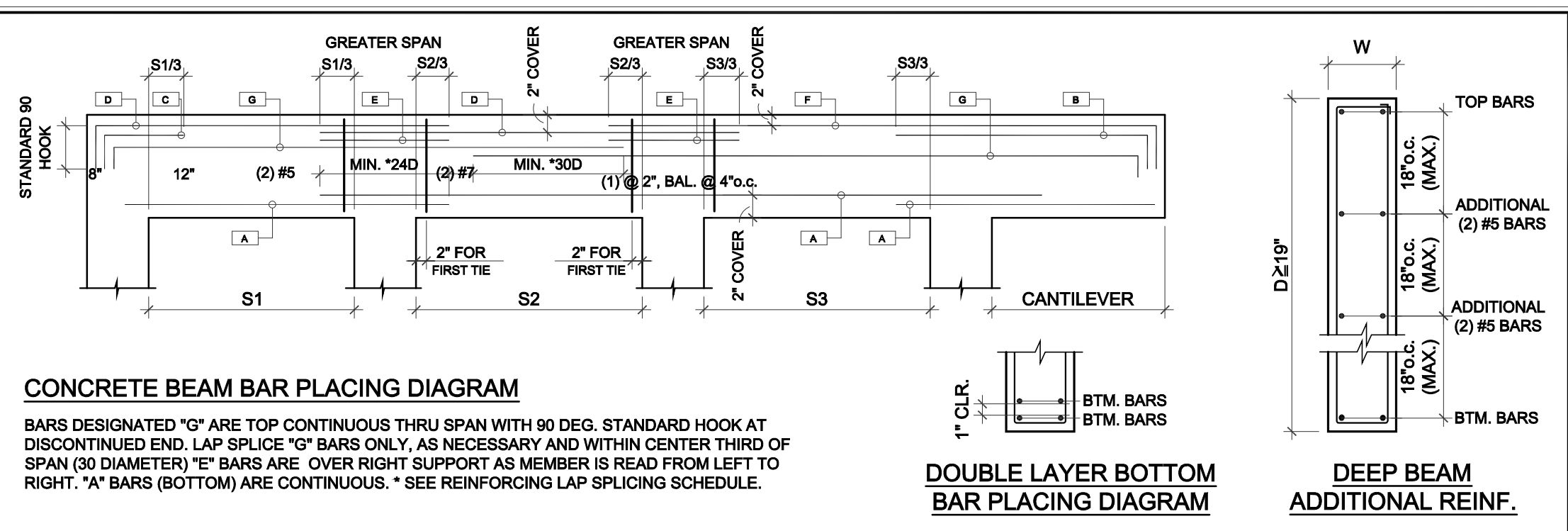
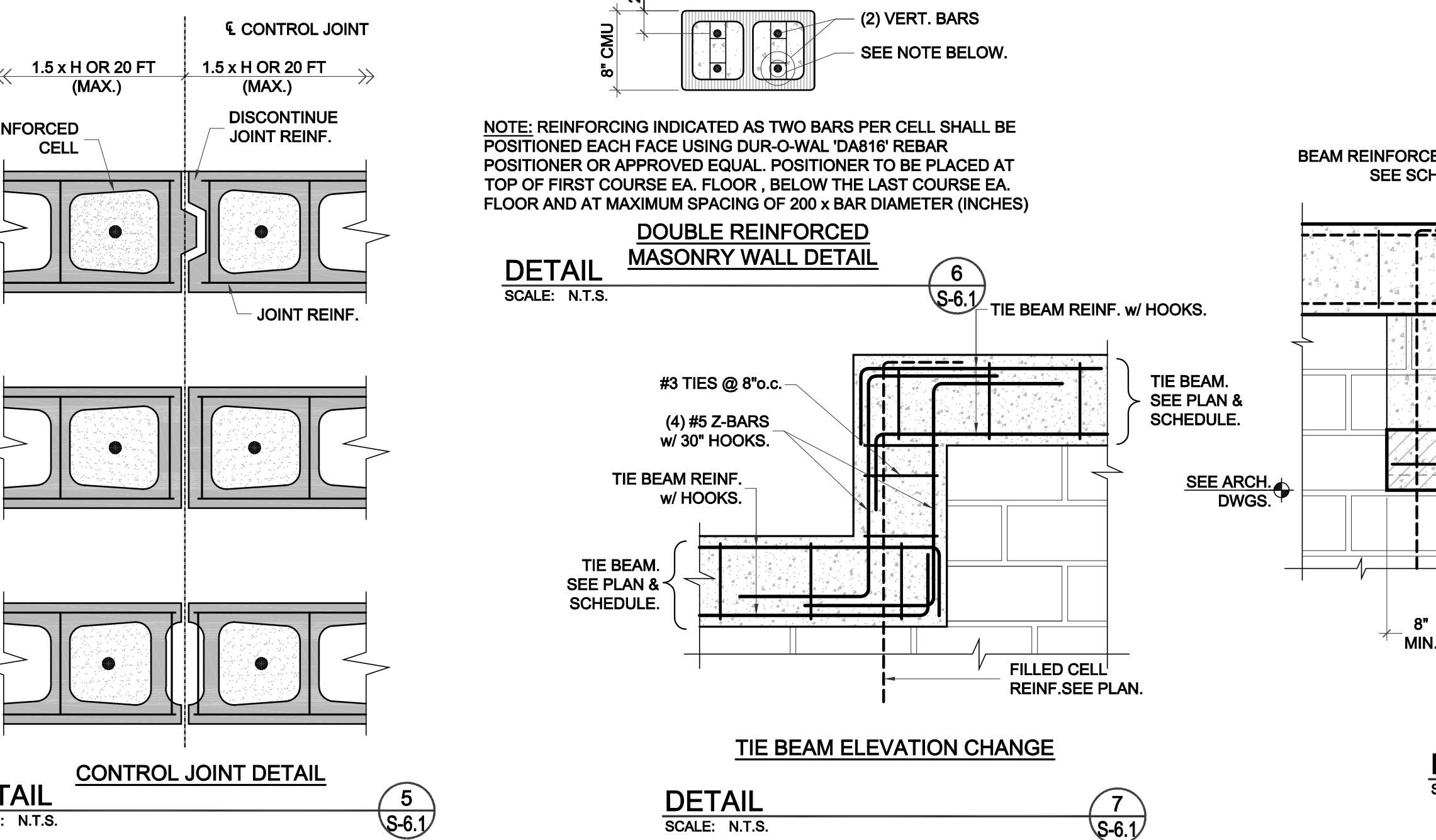
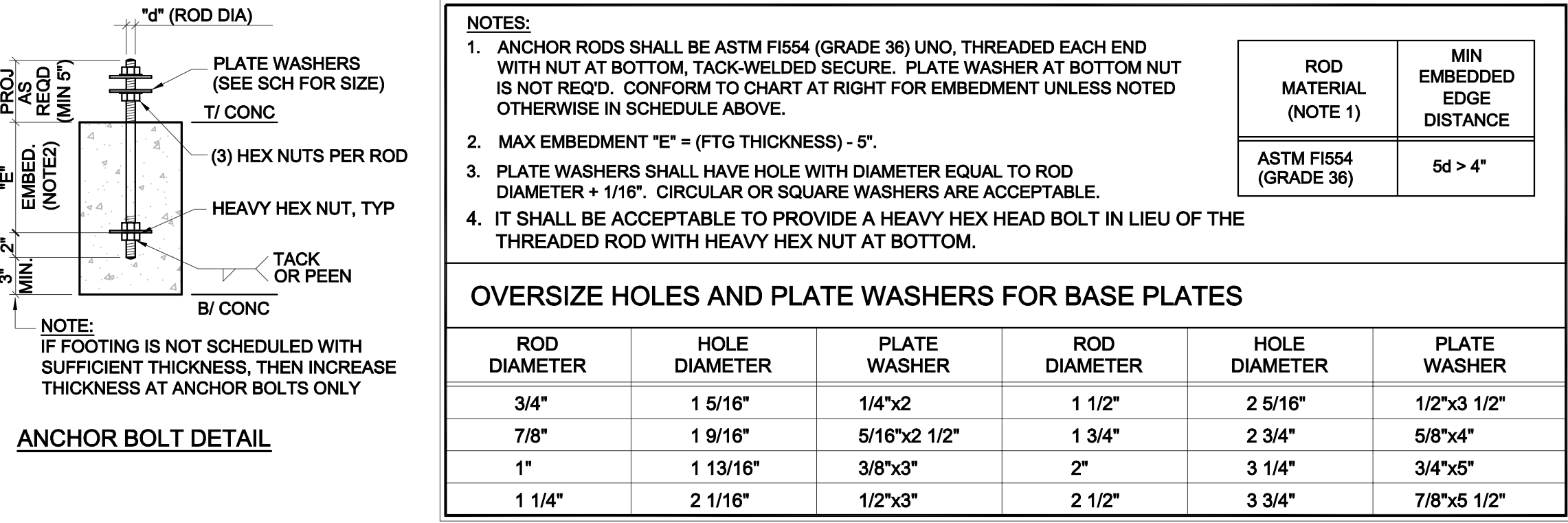
MARK	SIZE "W" X "D"	REINFORCING	REMARKS
TE-1	8" x 8" X CONT.	(1) #5 MID DEPTH.	-
F-36	3'-6" X 3'-6" X 12"	(5) #4 BOTTOM, EACH WAY.	-
F-46	4'-6" X 4'-6" X 14"	(5) #5 BOTTOM, EACH WAY.	-
F-50	5'-0" X 5'-0" X 14"	(5) #5 BOTTOM, EACH WAY.	-
F-56	5'-6" X 5'-6" X 16"	(7) #5 BOTTOM, EACH WAY.	-
F-66	6'-6" X 6'-6" X 18"	(6) #6 BOTTOM, EACH WAY.	-
F-76	7'-6" X 7'-6" X 20"	(8) #6 BOTTOM, EACH WAY.	-
F-110	11'-0" X 11'-0" X 28"	(10) #7 BOTTOM, (10) #5 TOP.	-
WF-16	16" X 12" X CONT.	(2) #5 CONT. BOTTOM, (1) #5 CONT., TOP.	-
WF-24	24" X 12" X CONT.	(3) #5 CONT. BOTTOM, (1) #5 CONT., TOP, PLUS #4 @ 12" o.c. TRANSVER., TOP & BOTT.	-
WF-48	48" X 12" X CONT.	(4) #5 CONT. BOTTOM, (2) #5 CONT., TOP, PLUS #4 @ 9" o.c. TRANSVER., TOP & BOTT.	-

**COLUMN SCHEDULE**

MARK	TYPE	SIZE "W" X "D"	VERTICAL REINFORCING	TIE SPACING	REMARKS
(1)	CONC.	16 x 40	(12) #8	(1) #3 @ 8" o.c.	
(2)	CONC.	12 x 24	(6) #7	(1) #3 @ 8" o.c.	
(3)	CONC.	12 x 28	(6) #7	(1) #3 @ 8" o.c.	
(4)	CONC.	8 x 16	(6) #7	(1) #3 @ 8" o.c.	
(5)	CONC.	8 x 12 x 16	(7) #7	(1) #3 @ 8" o.c.	
(6)	CONC.	8 x 20	(6) #7	(1) #3 @ 8" o.c.	
(7)	CONC.	12 x 16	(6) #7	(1) #3 @ 8" o.c.	
(8)	CONC.	SEE DETAIL	(12) #8	(1) #3 @ 10" o.c.	
(10)	STEEL	HSS 6"x6"x1/2"	BASE PLATE 18"x18"x1" w/ (8) 1"Ø THREAD BOLTS.	SEE ADD'L SECTIONS & DETAILS FOR BASE & CAP PLATE'S INFO.	
(11)	STEEL	HSS 8"x8"x1/2"	BASE PLATE 18"x18"x1" w/ (8) 1"Ø THREAD BOLTS.	SEE ADD'L SECTIONS & DETAILS FOR BASE & CAP PLATE'S INFO.	
(12)	STEEL	HSS 5"x5"x1/4"			

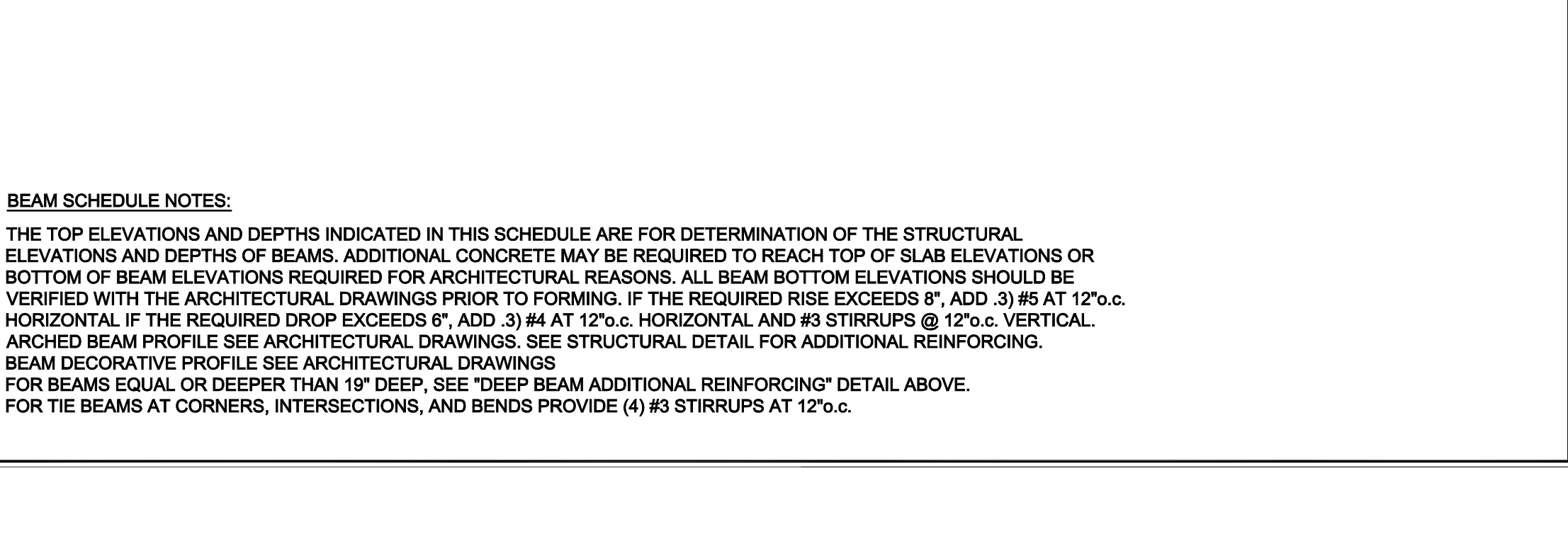


**COLUMN SCHEDULE NOTES:**  
 1. THE SCHEDULED SIZES ARE MINIMUM STRUCTURAL SIZES FOR REINFORCING STEEL FABRICATION ADDITIONAL CONCRETE MAY BE REQUIRED FOR ARCHITECTURAL PURPOSES OR TO REACH WINDOW OR DOOR JAMB. ALL OVERALL COLUMN SIZES SHALL BE VERIFIED WITH ARCHITECTURAL PLANS PRIOR TO FORMING.



**BEAM SCHEDULE**

MARK	ELEVATION NOTE-1	SIZE NOTE-1		BOTTOM REINFORC.	TOP REINFORC.	STIRRUPS	REMARKS
		WIDTH "B"	DEPTH "D"				
PCL	SEE ARCH. DWGS.	8	8	(1) #5	-	N/A	-
B-1	+13'-0"	16	36	(3) #8	-	(3) #6 @ 6" o.c., EA. END, BAL. @ 12" o.c.	
B-2	+13'-0"	8	36	(2) #7	-	(2) #7 @ 6" o.c., EA. END, BAL. @ 12" o.c.	(2) #6 @ MID-DEPTH EA. FACE
B-3	NOT USED						
B-4	NOT USED						
B-5	+13'-0"	8	36	(4) #8	-	(2) #7 @ 4" o.c., EA. END, BAL. @ 8" o.c.	
B-6	+13'-0"	16	36	(4) #8	-	(4) #6 @ 4" o.c., EA. END, BAL. @ 8" o.c.	
B-7	+13'-0"	8	36	(2) #7	-	(2) #7 @ 6" o.c., EA. END, BAL. @ 12" o.c.	
B-8	+8'-0"	8	16	(2) #5	-	(2) #5 @ 6" o.c., EA. END, BAL. @ 12" o.c.	(2) #5 @ MID-DEPTH EA. FACE
B-9	+18'-0"	8	20	(2) #5	(2) #5	(2) #5 @ 12" o.c., EA. END, BAL. @ 24" o.c.	
B-10	+18'-0"	16	20	(4) #6	(2) #5	(4) #6 @ 12" o.c.	
B-11	+17'-4"	16	20	(4) #6	(2) #5	(4) #6 @ 12" o.c.	
B-12	+16'-0"	8	20	(2) #5	(2) #5	(4) @ 12" o.c., EA. END, BAL. @ 24" o.c.	
B-13	+16'-0"	16	24	(4) #6	(2) #5	(4) #6 @ 12" o.c.	
B-14	+16'-0"	12	16	(2) #5	(2) #5	(4) @ 12" o.c., EA. END, BAL. @ 24" o.c.	
B-15	+16'-0"	12	20	(4) #6	(2) #5	(4) #6 @ 12" o.c.	
B-16	+15'-6"	16	20	(4) #6	(2) #5	(4) #6 @ 12" o.c.	
B-17	+15'-6"	12	16	(2) #5	(2) #5	(4) @ 12" o.c., EA. END, BAL. @ 24" o.c.	
B-18	+16'-0"	8	20	(2) #5	(2) #5	(4) @ 12" o.c., EA. END, BAL. @ 24" o.c.	
B-19	+17'-4"	8	20	(2) #5	(2) #5	(4) @ 12" o.c., EA. END, BAL. @ 24" o.c.	
B-20	+18'-0"	8	20	(2) #5	(2) #5	(4) @ 12" o.c., EA. END, BAL. @ 24" o.c.	



**CAST IN PLACED REINFORCED CONCRETE LINTEL SCHEDULE**

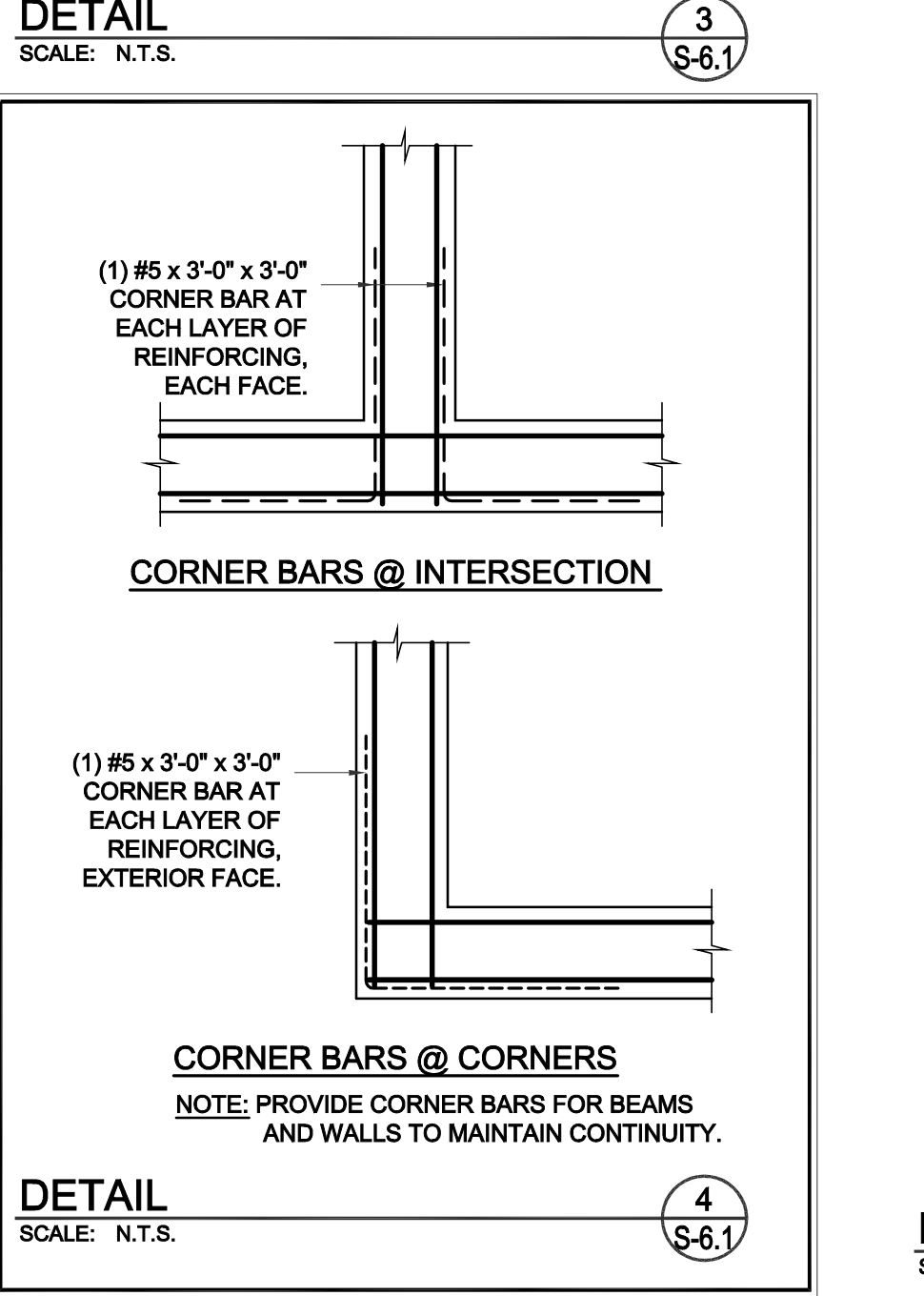
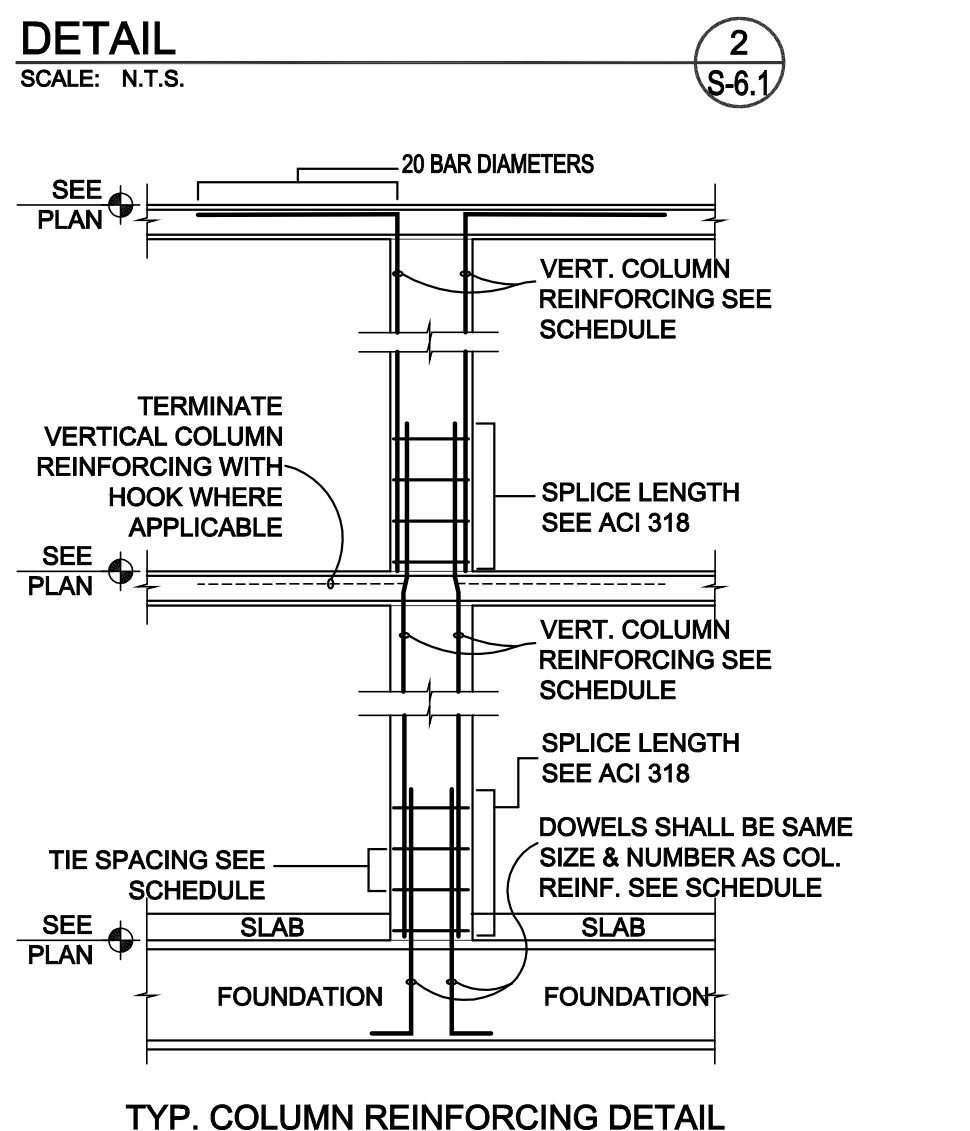
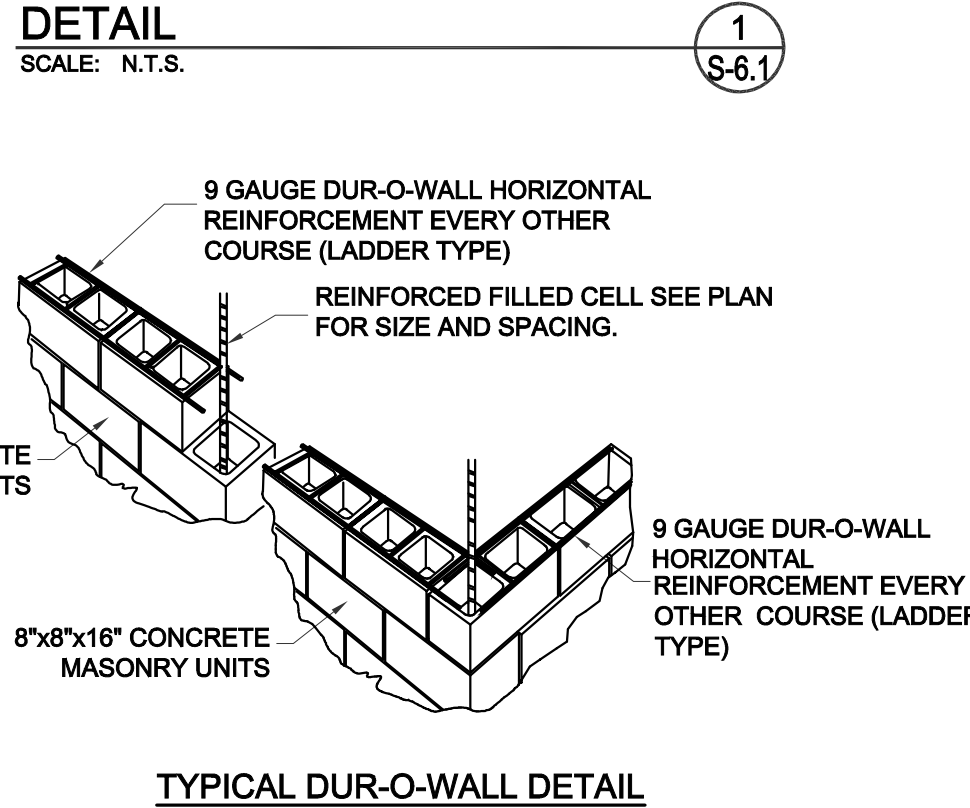
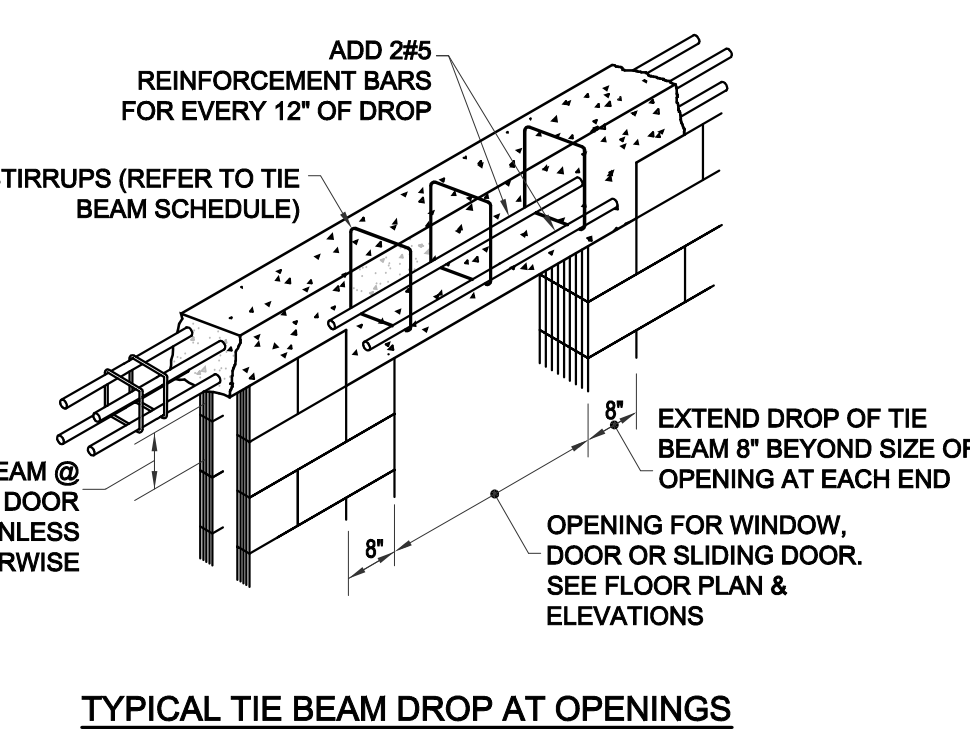
WIDTH	DEPTH (MIN.)	CLEAR SPAN FT.	REINFORCING		TIES
			TOP	BOT	
7 5/8"	12"	3'-0" TO 7'-0"	(2) #5	(2) #5	#3 @ 5" o.c.
7 5/8"	16"	7'-0" TO 12'-0"	(2) #5	(2) #5	#3 @ 6" o.c.

PROVIDE 8" MINIMUM BEARING AT EACH SIDE OF OPENING

**REINFORCED CONCRETE LINTEL SCHEDULE**

WIDTH	HEIGHT	CLEAR SPAN IN FT.	REINFORCING		TIES
			TOP	BOT	
7-5/8"	7-5/8"	UP TO 3'-0"	(2) #4	(2) #4	#2 @ 12" O.C.
7-5/8"	12"	3'-0" TO 7'-0"	(2) #5	(2) #5	#3 @ 12" O.C.
7-5/8"	16"	7'-0" TO 12'-0"	(2) #5	(2) #5	#3 @ 12" O.C.
11-5/8"	7-5/8"	UP TO 7'-0"	(2) #4	(2) #4	#3 @ 12" O.C.
11-5/8"	12"	7'-0" TO 9'-0"	(2) #5	(2) #5	#3 @ 12" O.C.
11-5/8"	16"	9'-0" TO 10'-0"	(2) #5	(2) #5	#3 @ 12" O.C.

PROVIDE 7-5/8" MINIMUM BEARING AT EACH SIDE OF OPENING



Revisions:  
 1  
 2  
 3  
 4  
 5

Project Number  
**160412**


1066 U.S. HIGHWAY 1  
 New Retail Building - Goodwill  
 1066 U.S. HIGHWAY 1  
 Vero Beach, Florida

Project Name  
 New Retail Building

**Stephen Brascaglia, Architect**  
 State Of Florida  
 Registration No. AR12239  
 6991 West Broward Boulevard Suite 100  
 Plantation, Florida 33317  
 Telephone 954.614.3801  
 Telefax 954.208.0600  
 architect@design23.net

Drawn By: R.S.S. Checked By: S.T.B.  
 Scale: SHOWN Date: 7-13-16  
 Project Number  
**160412**  
 Sheet:  
**S-6.1**

PERMIT SET 07-29-2016

  
**Unison Structural Design LLC**  
 KEVIN VENTURA  
 DE #24146  
 STRUCTURAL ENGINEER  
 FLORIDA  
 3000 N. STATE ROAD 7, SUITE 200, MIAMI, FL 33183  
 UNISONSTRUCTURALDESIGN.COM TEL: (305) 298-2467  
 KEVIN VENTURA, P.E. #24146