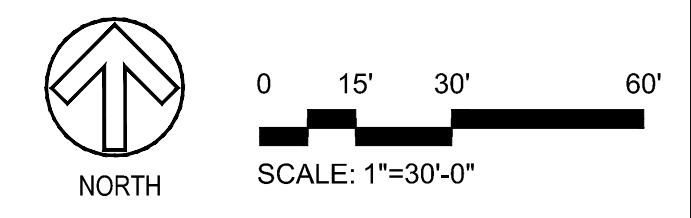
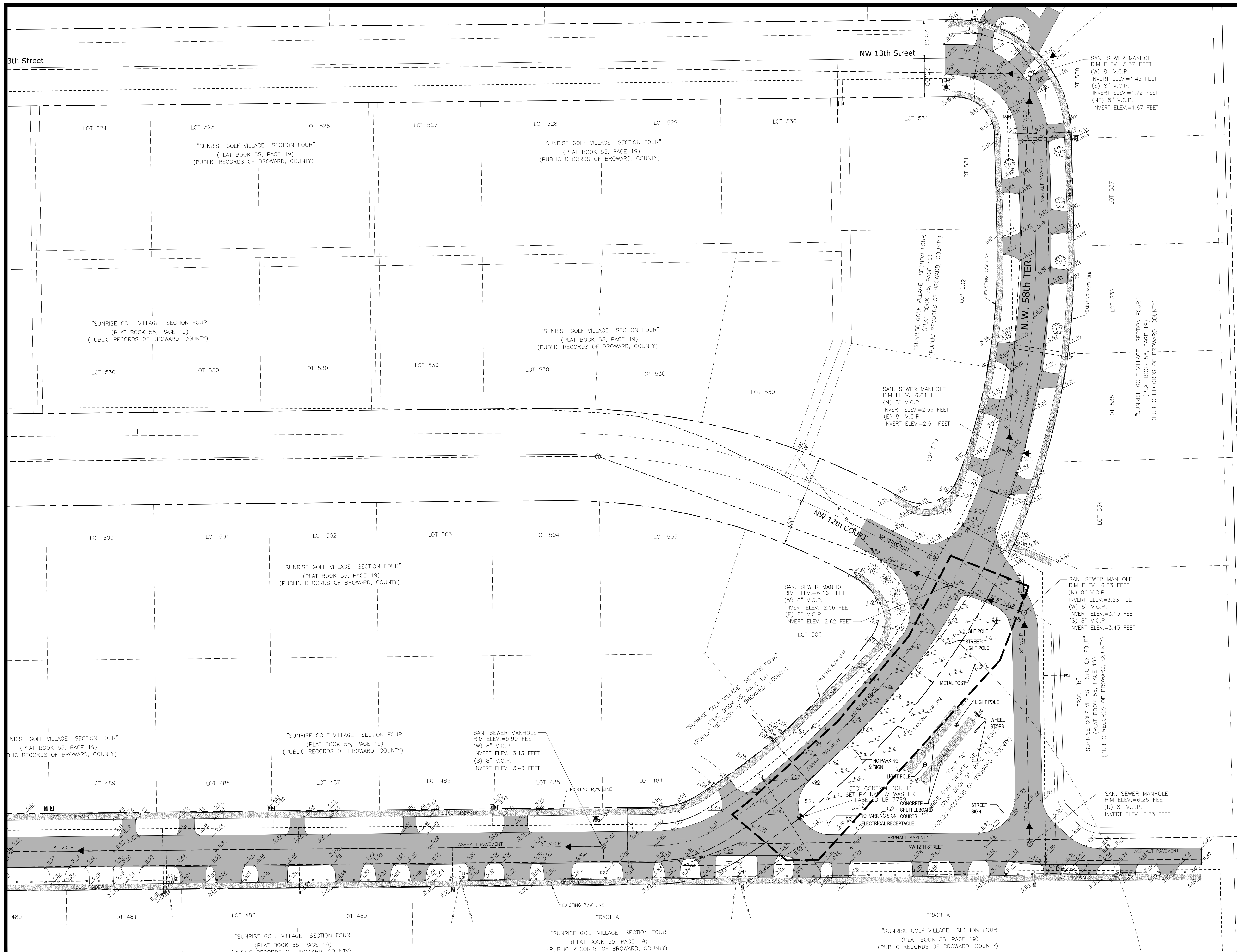


NOTES: CITY OF SUNRISE PROVIDED THE SURVEY COMPLETED BY 3TCI, PROFESSIONAL LAND SURVEYORS AND MAPPERS ON MARCH 16, 2016.



LEAVE BLANK - FOR CITY USE ONLY

DATE:				
SCALE:				
DESIGNED BY:	DJS			
DRAWN BY:	DJS			
CHECKED BY:	DJS			
APPROVED BY:	JDH			
DESCRIPTION		BY:	DATE:	

Craven Thompson and Associates, Inc.
 ENGINEERS • PLANNERS • SURVEYORS
 3563 N.W. 53RD STREET, FORT LAUDERDALE, FLORIDA 33309
 FAX: (954) 739-6409 TEL: (954) 739-6400
 FLORIDA LICENSED ENGINEERING, SURVEYING & MAPPING BUSINESS NO. 271
 FLORIDA LICENSED LANDSCAPE ARCHITECTURE BUSINESS NO. 0000114
WE STRONGLY SUPPORT THE CITY OF SUNRISE AND THE STATE OF FLORIDA. WE ARE PLEDGED TO EXCELLENCE AND TO THE HIGHEST QUALITY OF SERVICE. WE ARE COMMITTED TO THE WELL-BEING OF OUR CLIENTS AND THE COMMUNITY.

**12TH STREET PARK
 RENOVATIONS**
 LOCATED AT NW 12TH STREET AND NW 58TH TERRACE SUNRISE, FL
 PREPARED FOR: CITY OF SUNRISE, FLORIDA

SURVEY

SEAL	DATE:
	07/06/16
Douglas James Schultz	DRAWING NO.
Florida RLA No. LA 6666937	V-1
PROJECT #:	
15-0108	