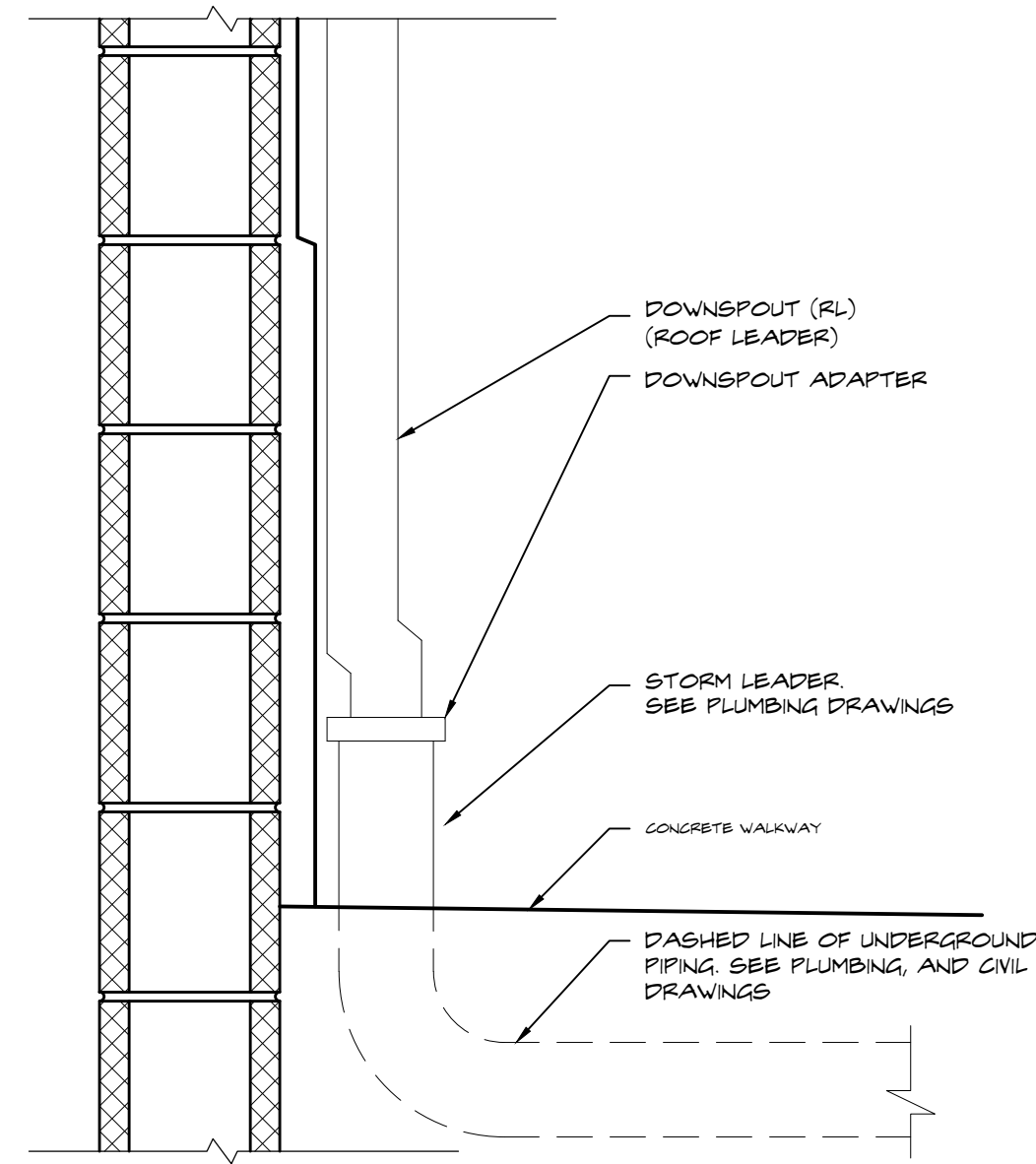
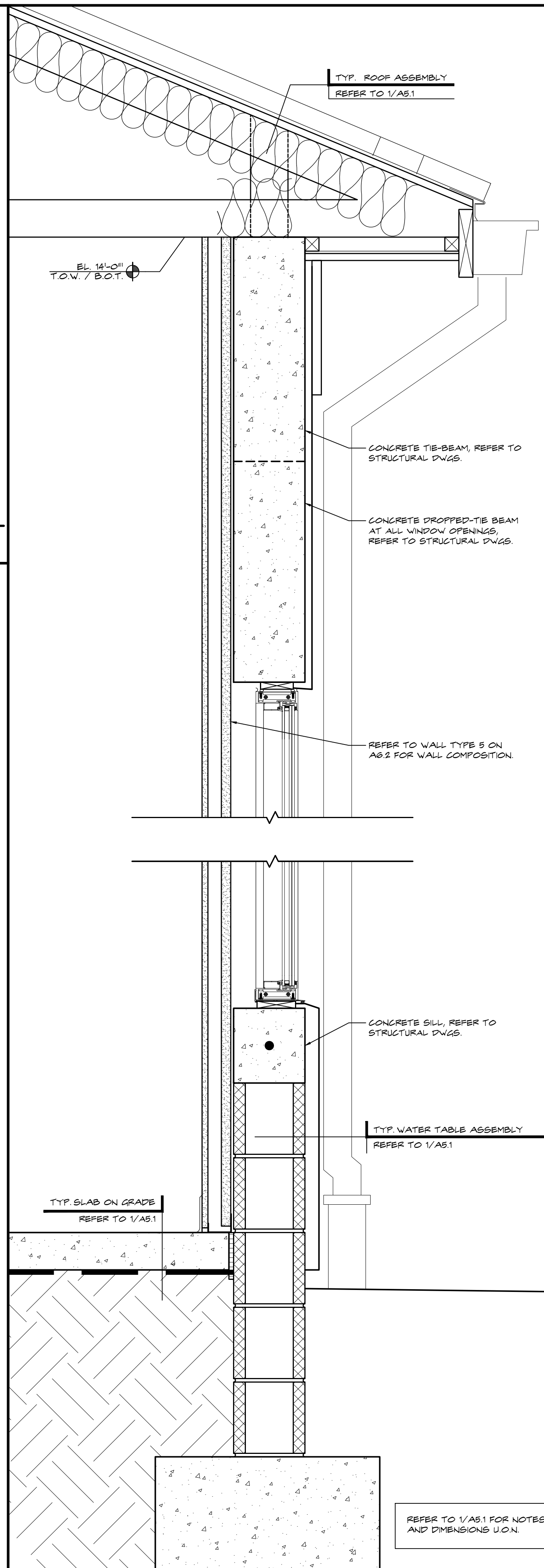


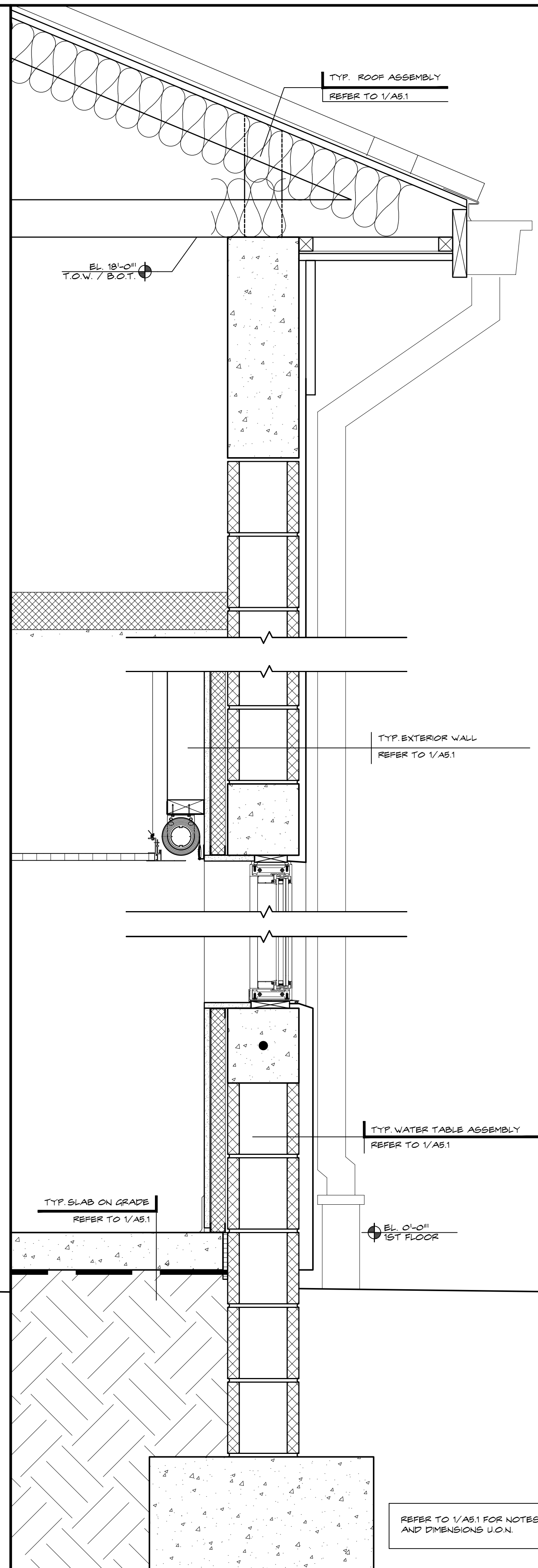
**6 WINDOW STUCCO REVEAL DETAIL**  
SCALE: 1-1/2" = 1'-0"



**5 DOWNSPOUT TIE-IN DETAIL**  
SCALE: 1-1/2" = 1'-0"

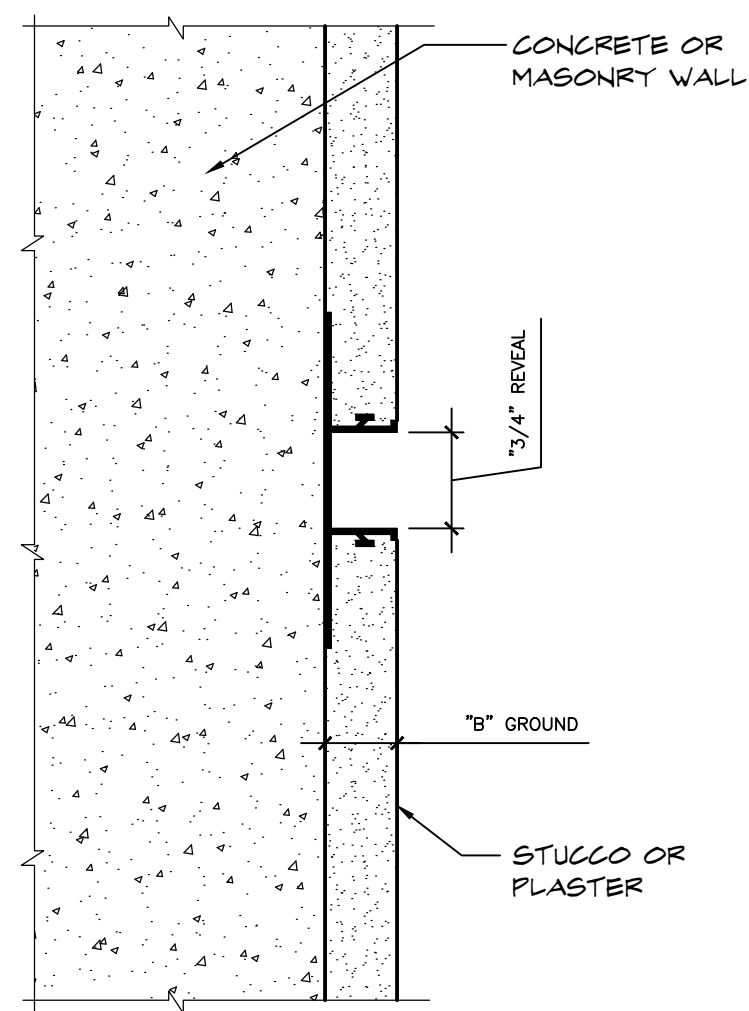


**2 EXTERIOR WALL AT ELECTRICAL ROOM**  
SCALE: 1-1/2" = 1'-0"



**1 TYPICAL WALL AT CORNER TOWERS**  
SCALE: 1-1/2" = 1'-0"

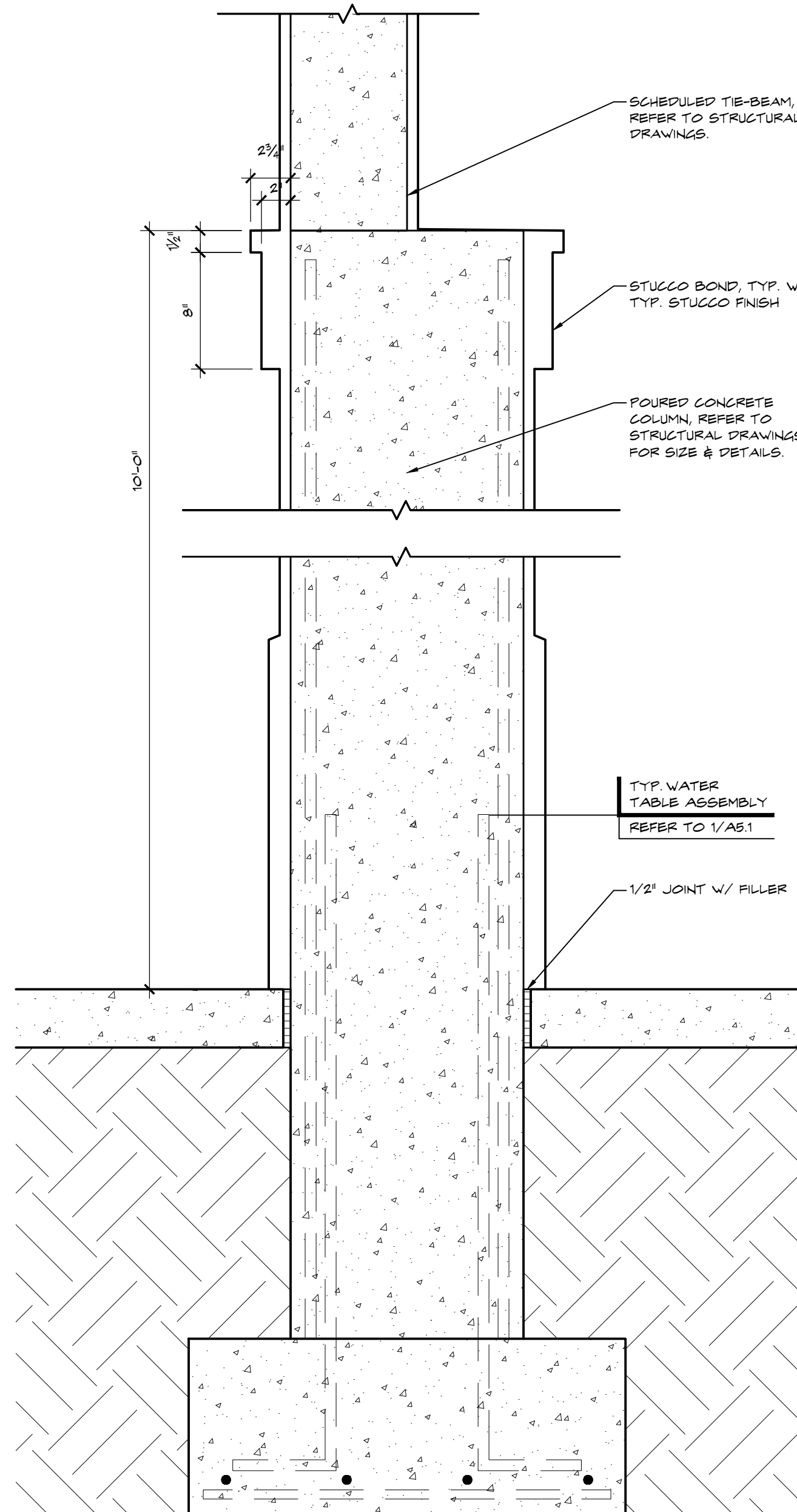
Product Submittal	Product Number	Dimension "A" Reveal	Dimension "B" Ground	Product Submittal	Product Number	Dimension "A" Reveal	Dimension "B" Ground
	707-25	1/2" [13 mm]	1/4" [6 mm]		710-25	1 1/2" [38 mm]	1/4" [6 mm]
	707-38	1/2" [13 mm]	3/8" [10 mm]		710-38	1 1/2" [38 mm]	3/8" [10 mm]
	707-50	1/2" [13 mm]	1/2" [13 mm]		710-50	1 1/2" [38 mm]	1/2" [13 mm]
	707-58	1/2" [13 mm]	5/8" [16 mm]		710-58	1 1/2" [38 mm]	5/8" [16 mm]
	707-75	1/2" [13 mm]	3/4" [19 mm]		710-75	1 1/2" [38 mm]	3/4" [19 mm]
	707-78	1/2" [13 mm]	7/8" [22 mm]		710-78	1 1/2" [38 mm]	7/8" [22 mm]
	708-25	3/4" [19 mm]	1/4" [6 mm]		711-25	2" [51 mm]	1/4" [6 mm]
	708-38	3/4" [19 mm]	3/8" [10 mm]		711-38	2" [51 mm]	3/8" [10 mm]
	708-50	3/4" [19 mm]	1/2" [13 mm]		711-50	2" [51 mm]	1/2" [13 mm]
	708-58	3/4" [19 mm]	5/8" [16 mm]		711-58	2" [51 mm]	5/8" [16 mm]
	708-75	3/4" [19 mm]	3/4" [19 mm]		711-75	2" [51 mm]	3/4" [19 mm]
	708-78	3/4" [19 mm]	7/8" [22 mm]		712-50	2 1/2" [64 mm]	1/2" [13 mm]
	709-25	1" [25 mm]	1/4" [6 mm]		712-58	2 1/2" [64 mm]	5/8" [16 mm]
	709-38	1" [25 mm]	3/8" [10 mm]		712-75	2 1/2" [64 mm]	3/4" [19 mm]
	709-50	1" [25 mm]	1/2" [13 mm]		713-50	3" [76 mm]	1/2" [13 mm]
	709-58	1" [25 mm]	5/8" [16 mm]		713-58	3" [76 mm]	5/8" [16 mm]
	709-75	1" [25 mm]	3/4" [19 mm]		713-75	3" [76 mm]	3/4" [19 mm]
	709-78	1" [25 mm]	7/8" [22 mm]		714-50	4" [102 mm]	1/2" [13 mm]
					714-58	4" [102 mm]	5/8" [16 mm]
					714-75	4" [102 mm]	3/4" [19 mm]
					714-78	4" [102 mm]	7/8" [22 mm]



**ULTRA-TRAC System Plaster Reveal**  
Plastic Components Inc. 800.327.7077

- NOTES:
1. Typical installation shown.
  2. Actual installation shall meet all local building codes and ASTM standards.
  3. All butt joints, intersections, ends and corners shall be caulked at the time of installation using an elastomeric sealant, such as Plastic Components "Ultra Tech" (PC-ULTW).

**4 STUCCO REVEAL DETAIL**  
SCALE: 6" = 1'-0"



**3 EXTERIOR COLUMN ELEVATION & DETAILS**  
SCALE: 1-1/2" = 1'-0"

THESE DRAWINGS ARE FOR THE EXCLUSIVE USE OF GLIDDENSPINA + PARTNERS, INC. AND MAY NOT BE DUPLICATED, REPRODUCED OR USED IN ANY MANNER WITHOUT THE EXPRESS WRITTEN CONSENT OF GLIDDENSPINA + PARTNERS, INC. ALL RIGHTS RESERVED.

Revisions:


Project no: 14224  
Date: 09.09.16  
Drawn by: WS  
Project Architect: WC / DR
