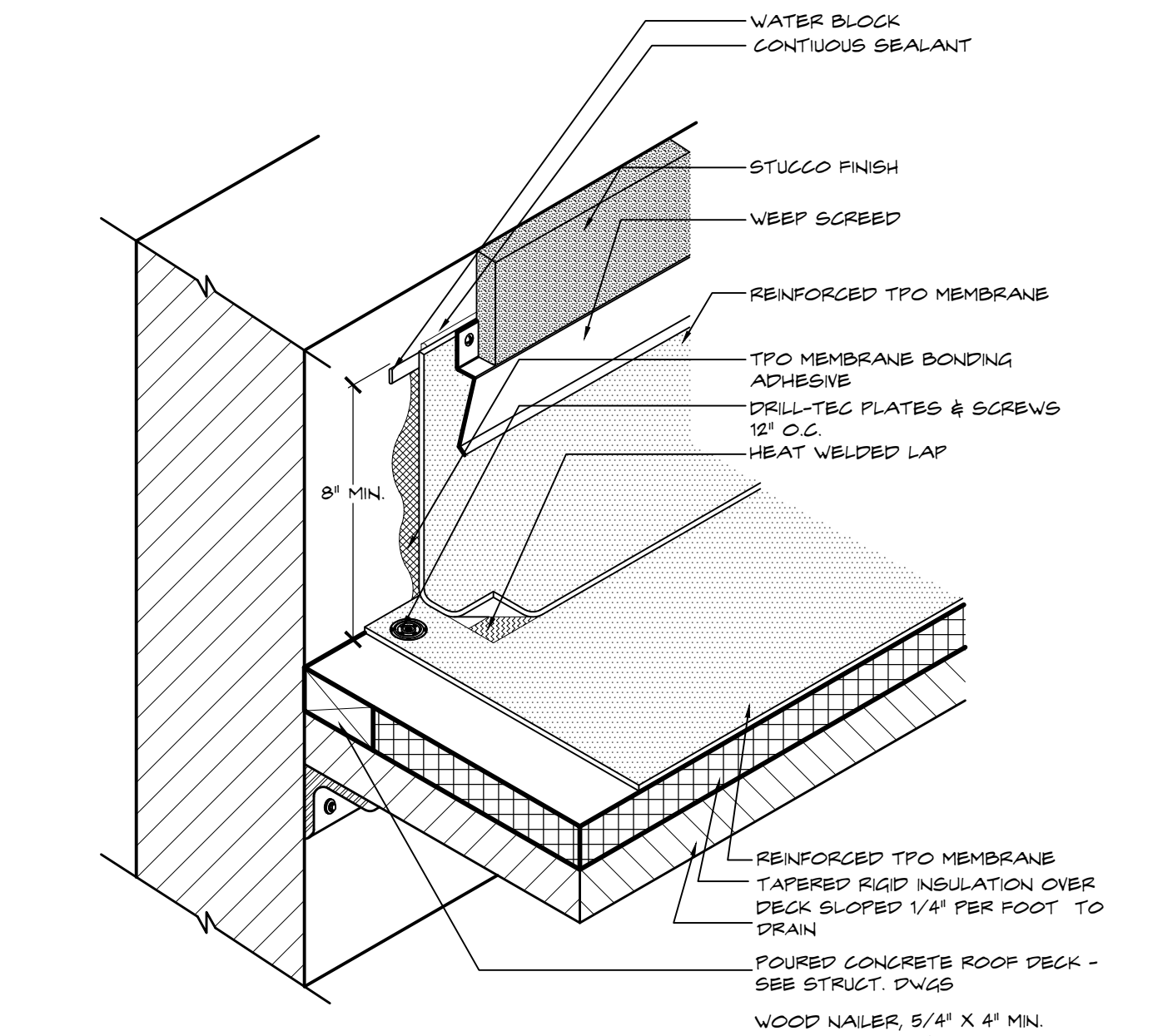


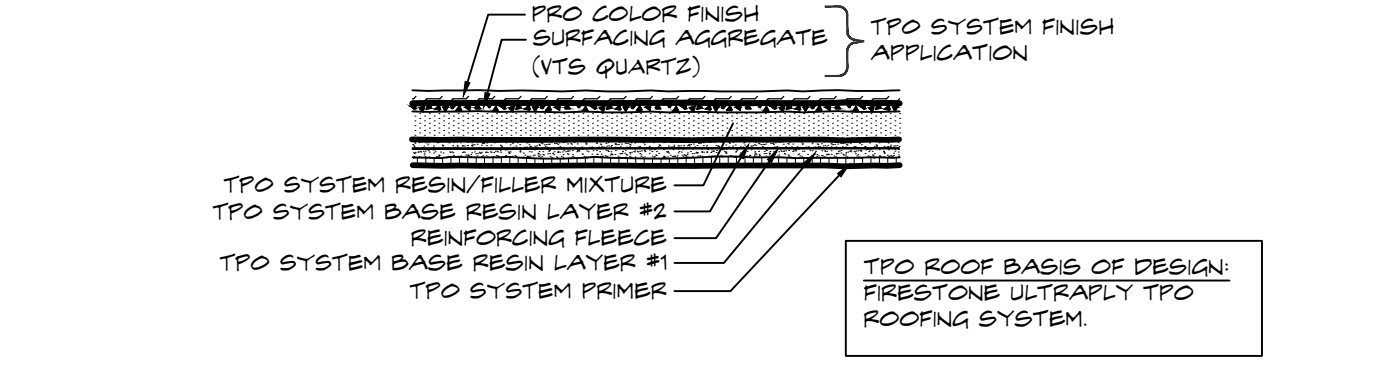
**11 HIGH WALL FLASHING**  
SCALE: 1-1/2" = 1'-0"

NOTES:  
1. BATTEN STRIP MAY BE USED IN LIEU OF SEAM PLATES. POLYMER OR METAL BATTEN STRIP ACCEPTABLE FOR WOOD OR METAL SUBSTRATE. METAL BATTEN STRIP MUST BE USED WITH MASONRY SUBSTRATE.  
2. INTERMEDIATE ATTACHMENT, COMPLETE AS FOLLOWS:  
- UP TO 3' WALL HEIGHT - NONE REQUIRED  
- 3' - 6' WALL HEIGHT - ONE ATTACHMENT AT 1/2 THE WALL HEIGHT ABOVE 6' - ONE ATTACHMENT EVERY 3'  
3. WHEN REINFORCEMENT OF TPO MEMBRANE IS EXPOSED, REFER TO MANUFACTURER FOR CUT EDGE SEALANT APPLICATION.



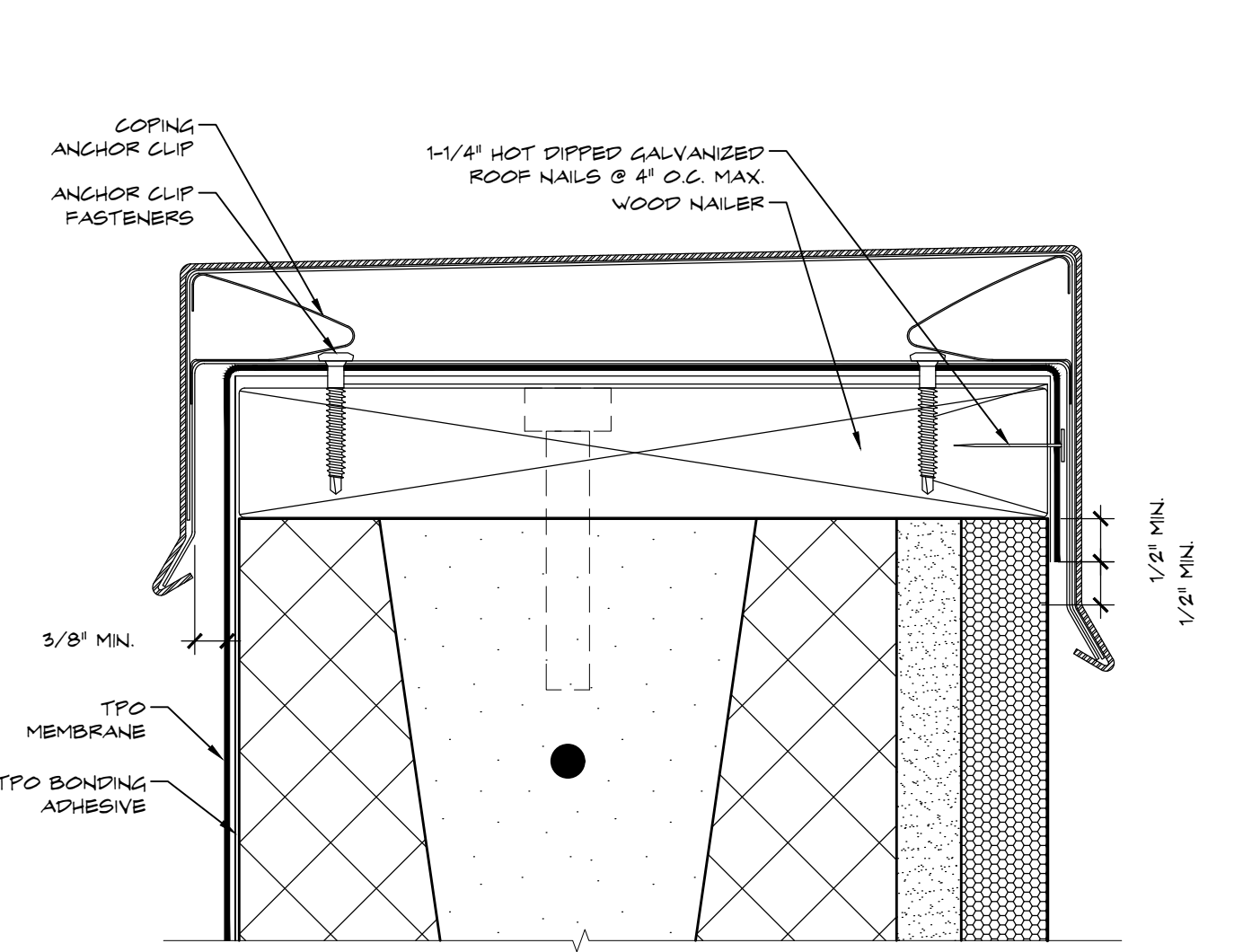
**10 PARAPET WALL FLASHING**  
SCALE: 1-1/2" = 1'-0"

NOTES:  
1. METAL COUNTERFLASHING SHALL BE 24 GAUGE PRE-FINISHED STEEL OR .032\"/>



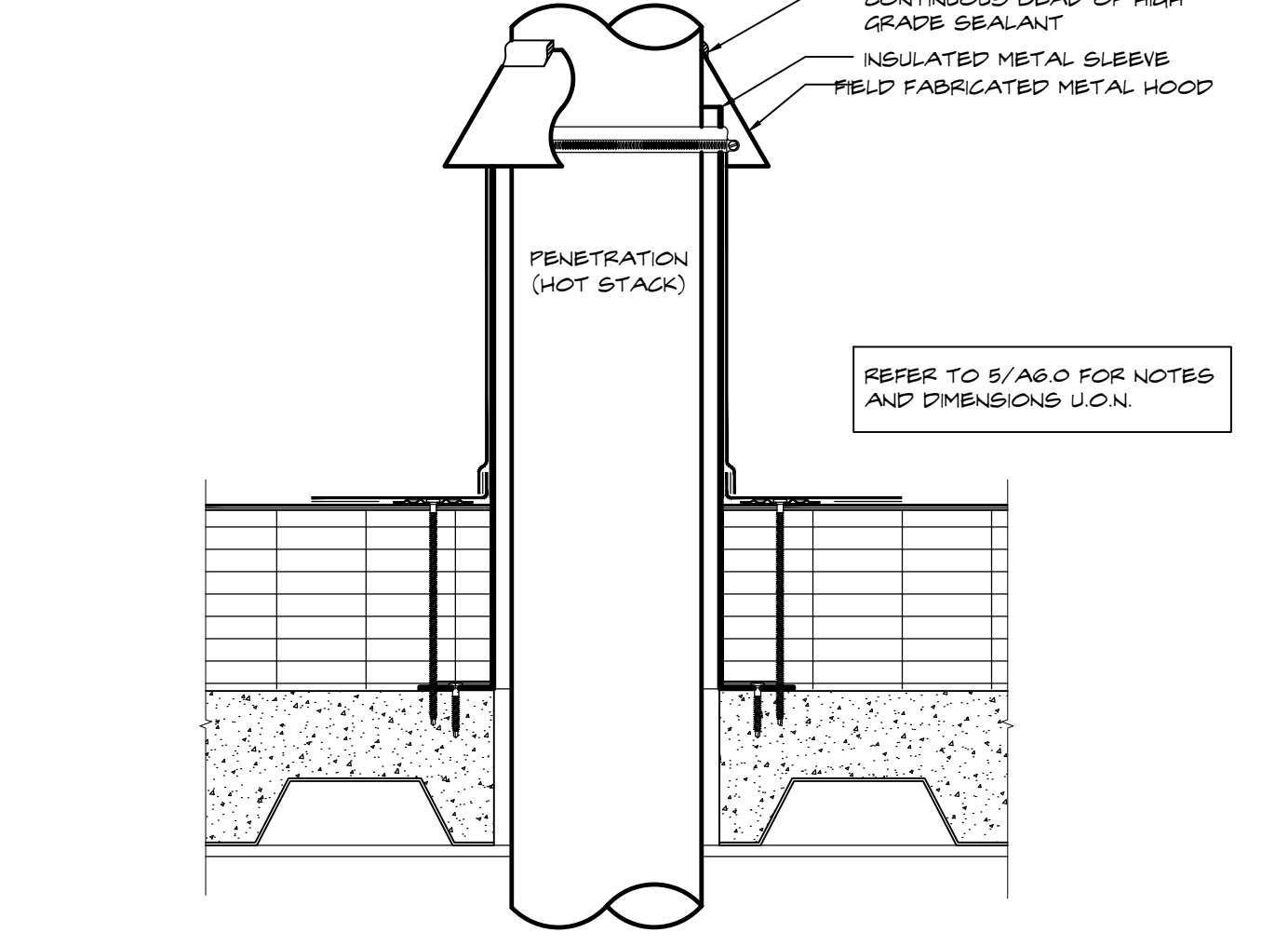
**9 TYPICAL TPO ROOF SYSTEM**  
SCALE: 1-1/2" = 1'-0"

TPO ROOF BASIS OF DESIGN: FIRESTONE ULTRAPLY TPO ROOFING SYSTEM.



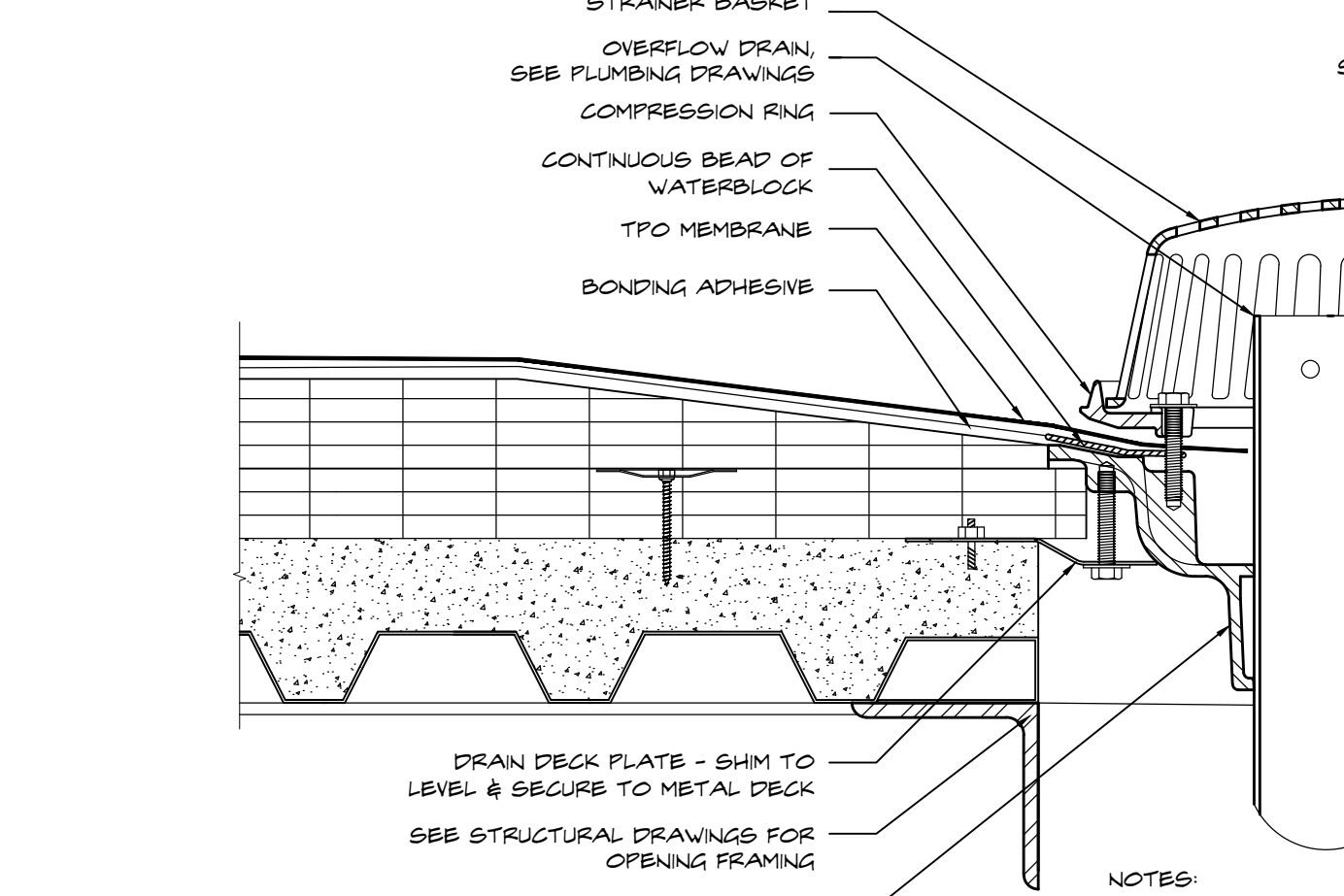
**8 PARAPET COPING DETAIL**  
SCALE: 6" = 1'-0"

METAL COPING BASIS OF DESIGN:  
MANUFACTURER: FIRESTONE  
DETAIL #: UT-T-12



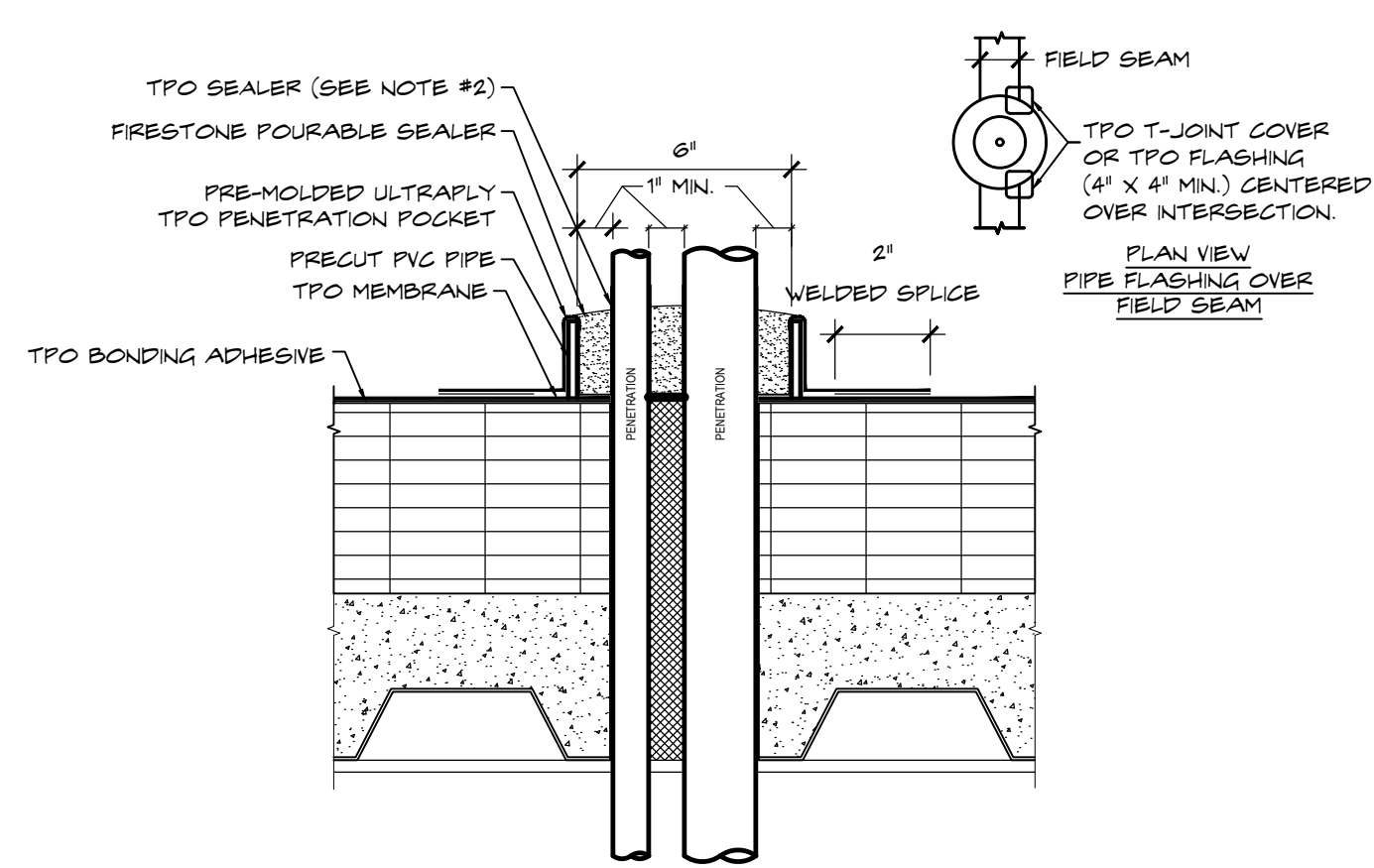
**7 HOT STACK VENT DETAIL**  
SCALE: 3" = 1'-0"

REFER TO 5/A&O FOR NOTES AND DIMENSIONS U.O.N.



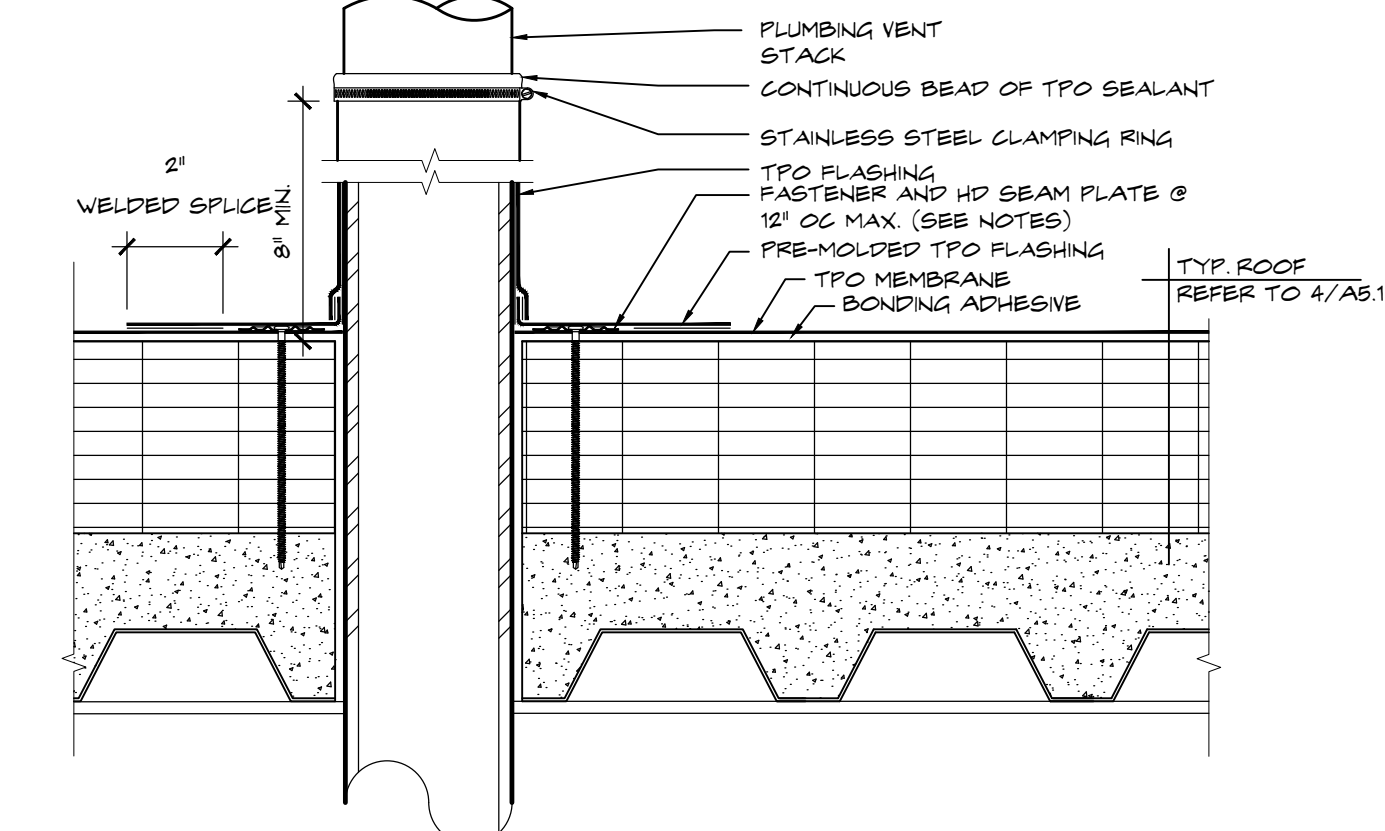
**4 ROOF DRAIN & OVERFLOW DRAIN DETAIL**  
SCALE: 3" = 1'-0"

NOTES:  
1. HOLE IN MEMBRANE MUST EXCEED SIZE OF DRAIN PIPE.  
2. INSULATION TAPER SHALL NOT BE STEEPER THAN 6 INCHES (VERTICAL) IN 12 INCHES (HORIZONTAL).  
3. ROOF DRAIN SIZE AND NUMBER OF DRAINS SHALL BE IN ACCORDANCE WITH LOCAL CODES.  
4. IF FIELD SEAM EDGE IS WITHIN 9\"/>



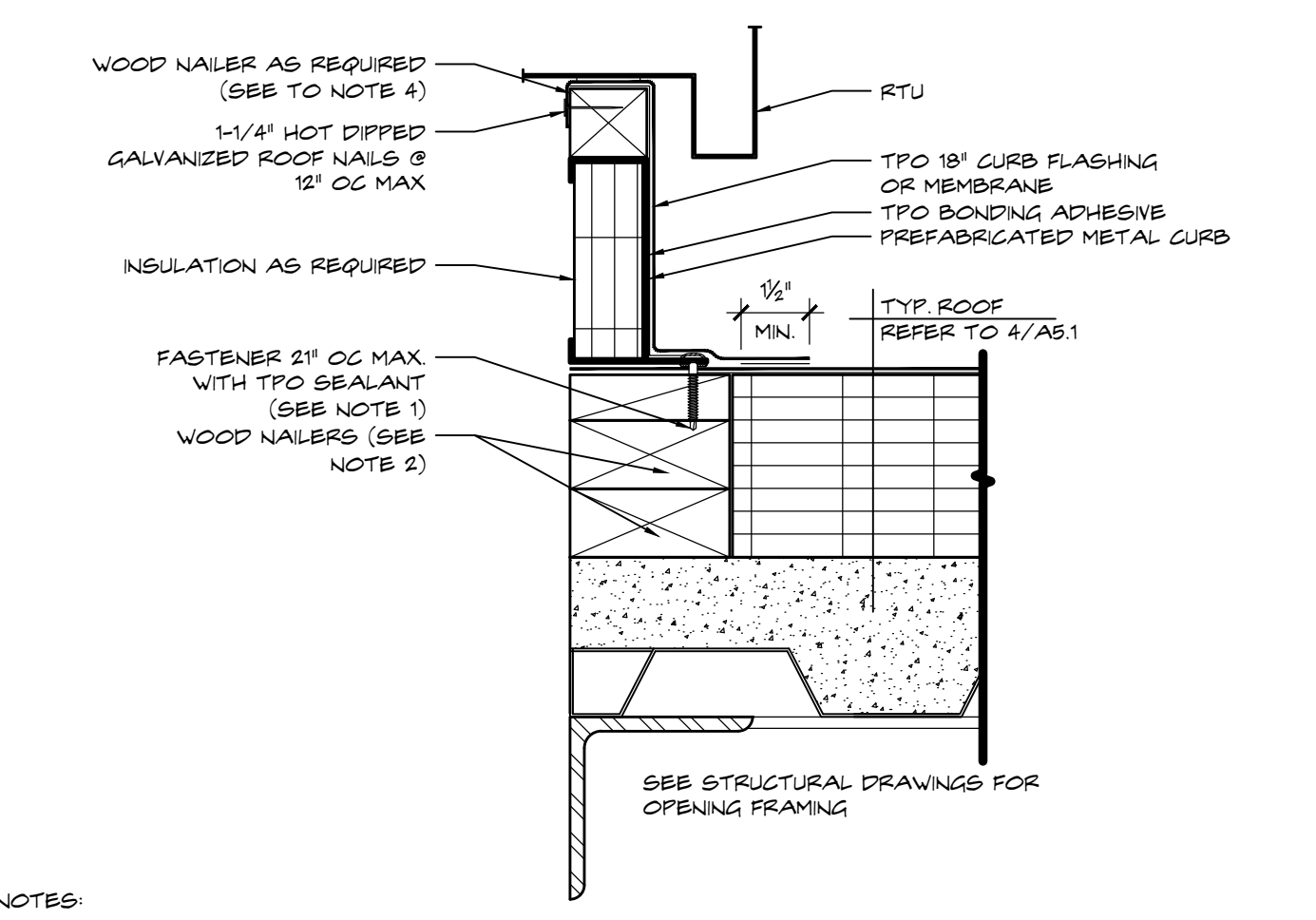
**6 POURED SEALANT PENETRATION DETAIL**  
SCALE: 3" = 1'-0"

NOTES:  
1. PIPE SURFACE MUST BE FREE OF ALL RUST, GREASE, INSULATION, ETC.  
2. POURABLE SEALER MOUNTED TO SHED WATER (MINIMUM DEPTH OF 2\", REMAINDER OF POCKET MAY BE FILLED WITH A NON-SHRINKING GROUT).  
3. DO NOT USE WHEN SERVICE LINE TEMP. EXCEEDS 180°F.  
4. IF FIELD MEMBRANE IS CUT FOR INSULATION, THE MEMBRANE MUST BE REPAIRED WITH TPO MEMBRANE PRIOR TO INSTALLATION OF THE PENETRATION POCKETS.  
5. MEMBRANE MUST BE INSTALLED WITHIN 1/2\"/>



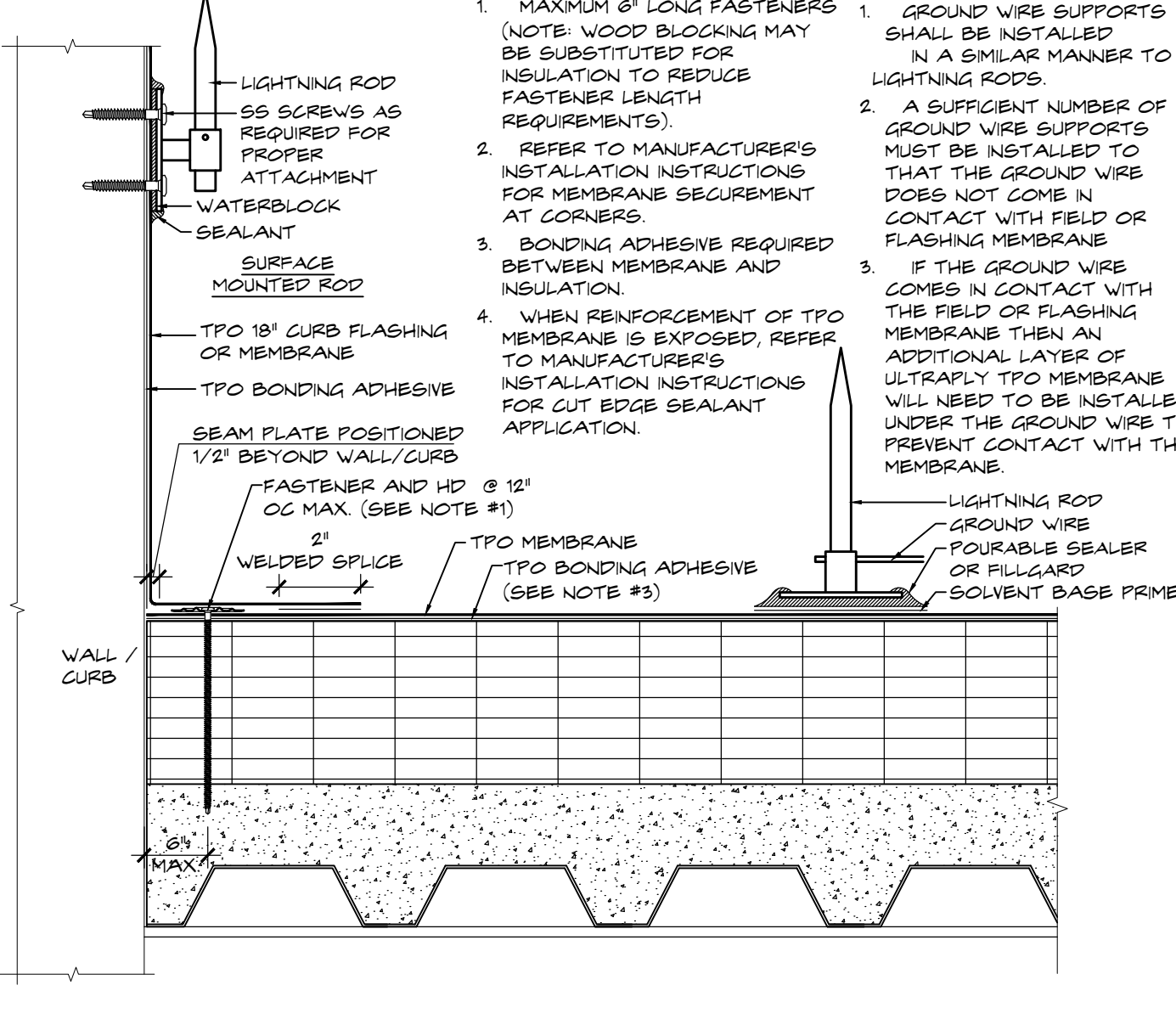
**5 TYPICAL VENT STACK DETAIL**  
SCALE: 3" = 1'-0"

NOTES:  
1. PIPE SURFACE MUST BE FREE OF ALL RUST, GREASE, INSULATION, ETC.  
2. PIPE MUST BE ANCHORED TO ENSURE STABILITY.  
3. NO WRINKLES OR FOLDS UNDER CLAMPING RING.  
4. DO NOT USE WHEN SERVICE LINE TEMP. EXCEEDS 180°F.  
5. BONDING ADHESIVE REQUIRED BETWEEN MEMBRANE AND INSULATION FOR FULLY ADHERED SYSTEMS.  
6. FASTENER AND HD SEAM PLATE REQUIRED FOR MAS ONLY. IF FASTENER CANNOT BE INSTALLED AS ILLUSTRATED, REFER TO MANUFACTURER'S DETAILS.  
7. WHEN REINFORCEMENT OF TPO MEMBRANE IS EXPOSED, REFER TO MANUFACTURER'S DETAILS FOR CUT EDGE SEALANT APPLICATION.



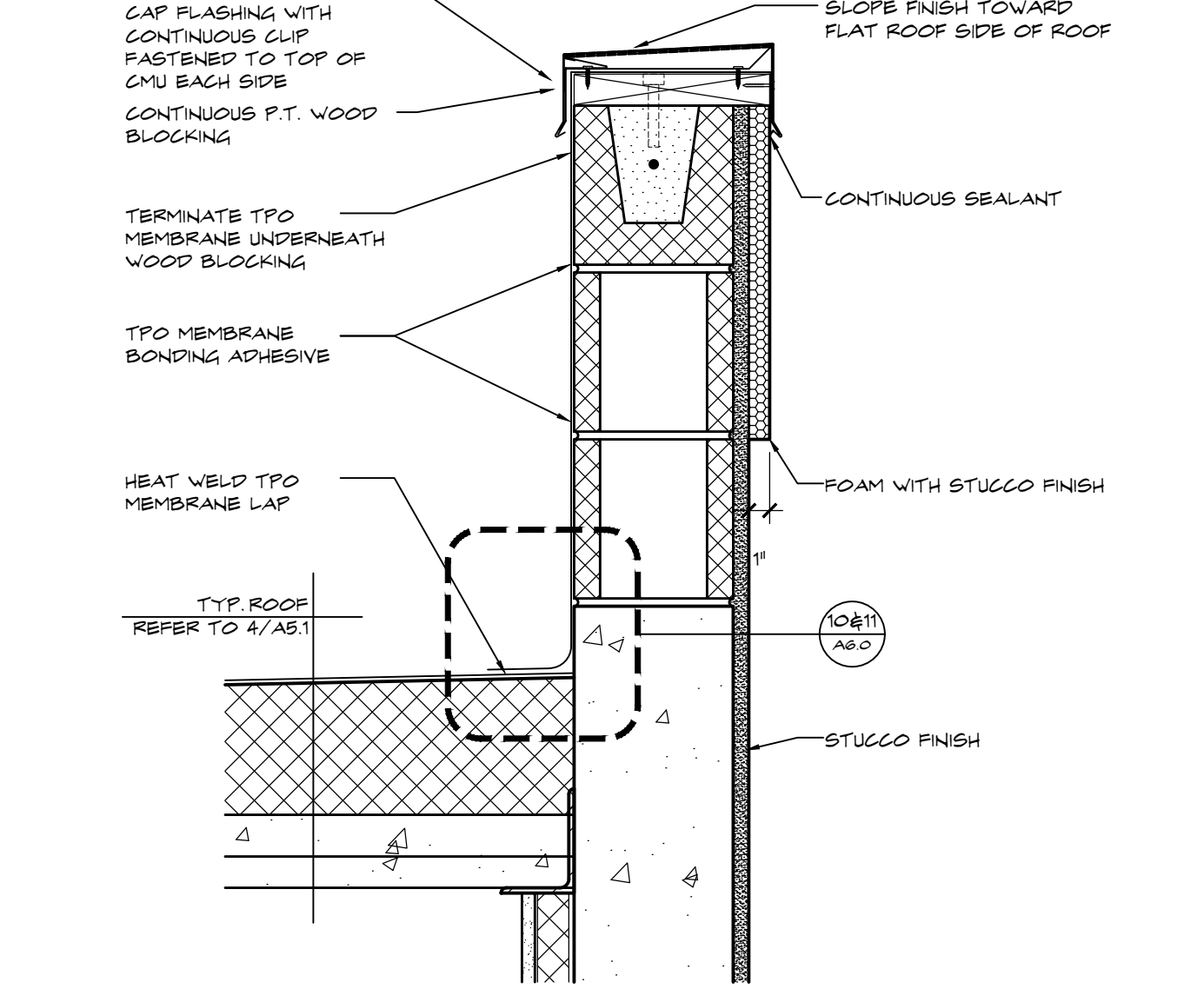
**3 TYPICAL EQUIPMENT CURB DETAIL**  
SCALE: 1/4" = 1'-0"

NOTES:  
1. FASTENER WITH SEALANT OVER FASTENER HEADS. SEALANT ALSO REQUIRED ALONG ENTIRE EDGE OF CURB FLANGE.  
2. WOOD NAILER MUST BE INSTALLED TO MEET APPLICABLE BUILDING CODES AND 200 LBS PER LINEAR FOOT IN ANY GIVEN DIRECTION.  
3. BONDING ADHESIVE REQUIRED BETWEEN MEMBRANE AND INSULATION FOR FULLY ADHERED SYSTEMS.  
4. WHEN REINFORCEMENT OF TPO MEMBRANE IS EXPOSED, REFER TO MANUFACTURER'S RECOMMENDATIONS FOR CUT EDGE SEALANT APPLICATION.



**2 TYPICAL BASE & LIGHTNING PROTECTION**  
SCALE: 3" = 1'-0"

BASE FLASHING NOTES:  
1. MAXIMUM 6\"/>



**1 TYPICAL PARAPET DETAIL**  
SCALE: 1-1/2" = 1'-0"

THESE DRAWINGS ARE FOR THE EXCLUSIVE USE OF GLIDDENSPINA + PARTNERS, INC. AND MAY NOT BE DUPLICATED, REPRODUCED OR USED IN ANY MANNER WITHOUT THE EXPRESS WRITTEN CONSENT OF GLIDDENSPINA + PARTNERS, INC. ALL RIGHTS RESERVED.

Revisions:

Project no: 14224  
Date: 09.09.16  
Drawn by: WS  
Project Architect: WC / DR