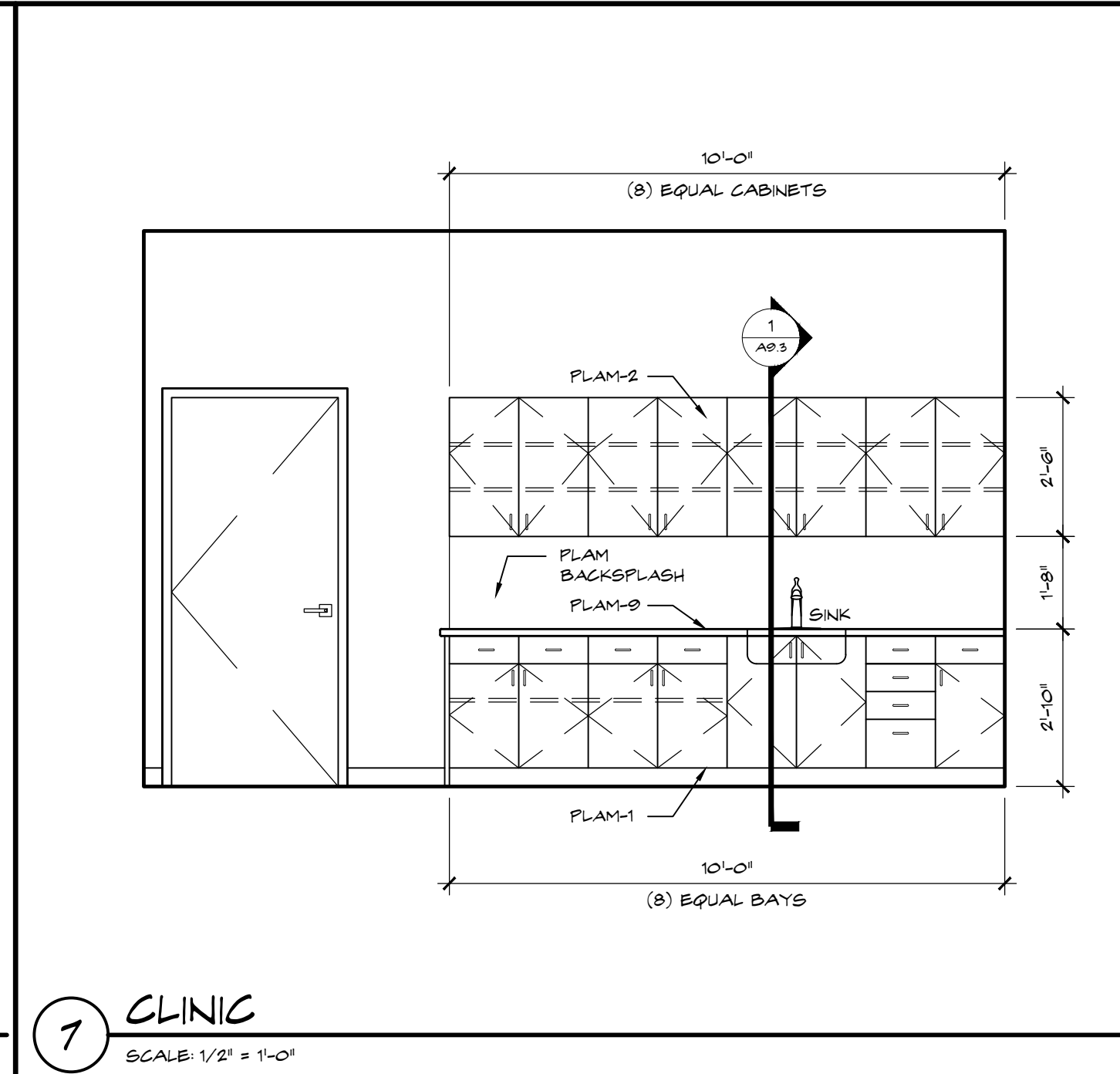
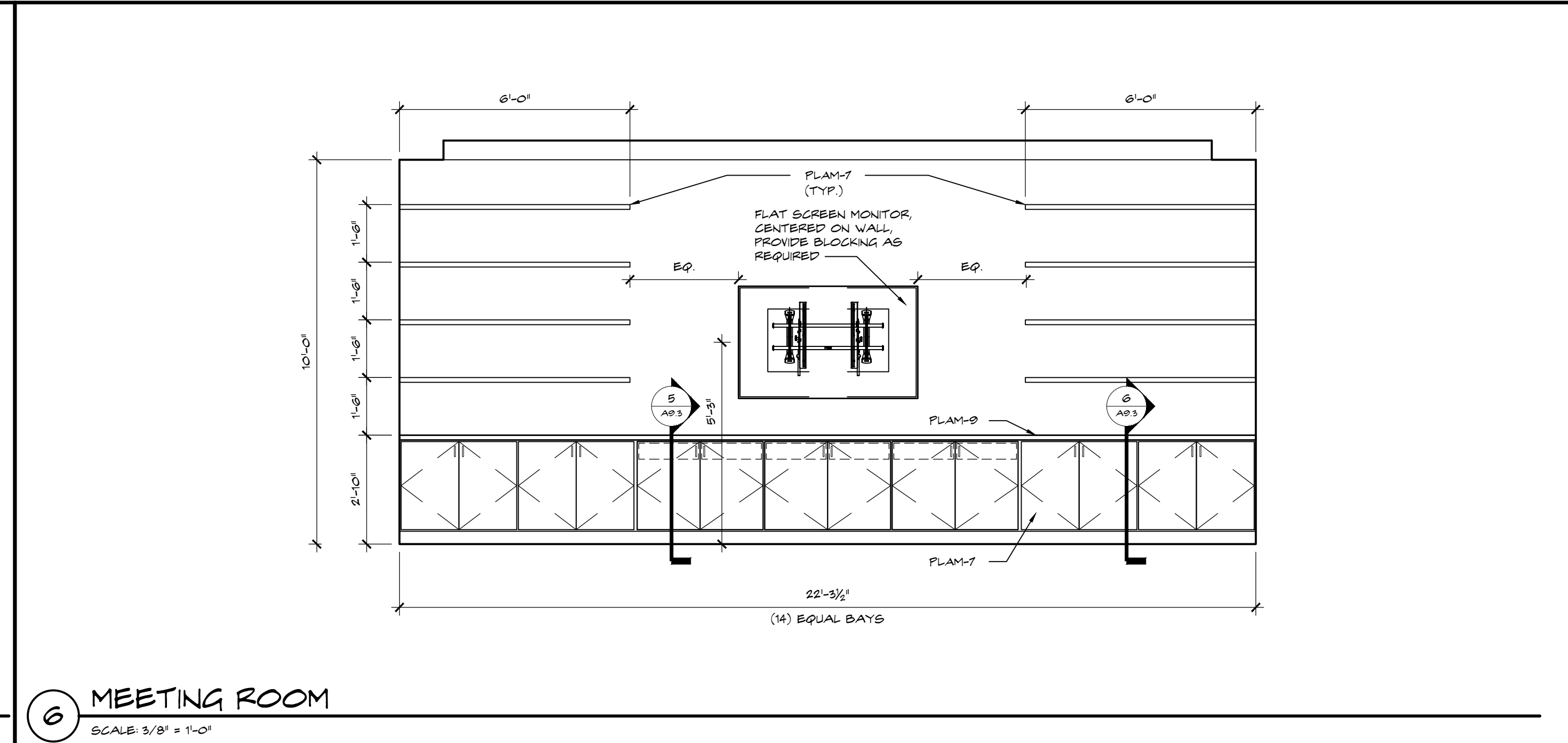


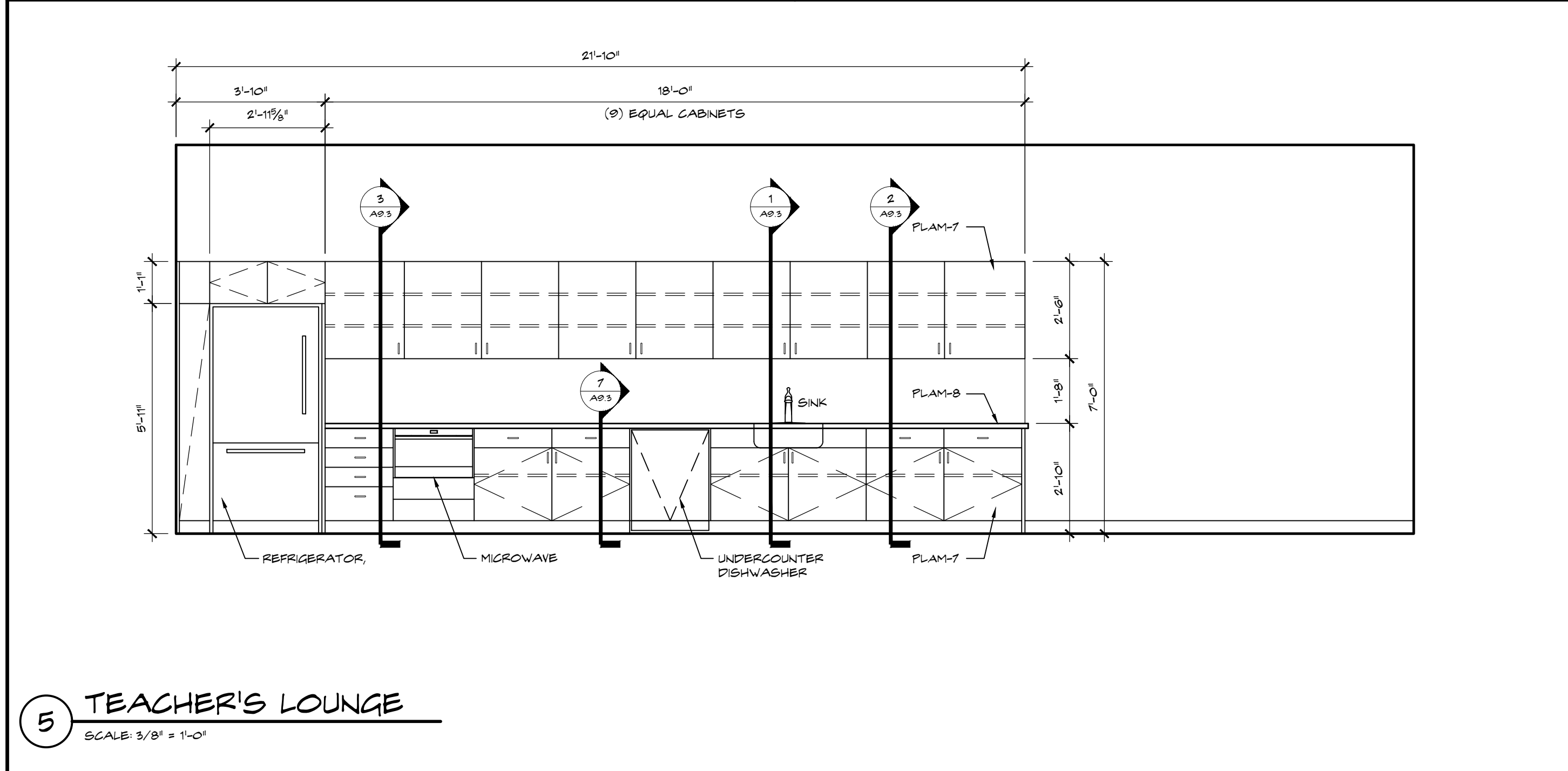
**8 DRINKING FOUNTAINS**  
SCALE: 1/2" = 1'-0"



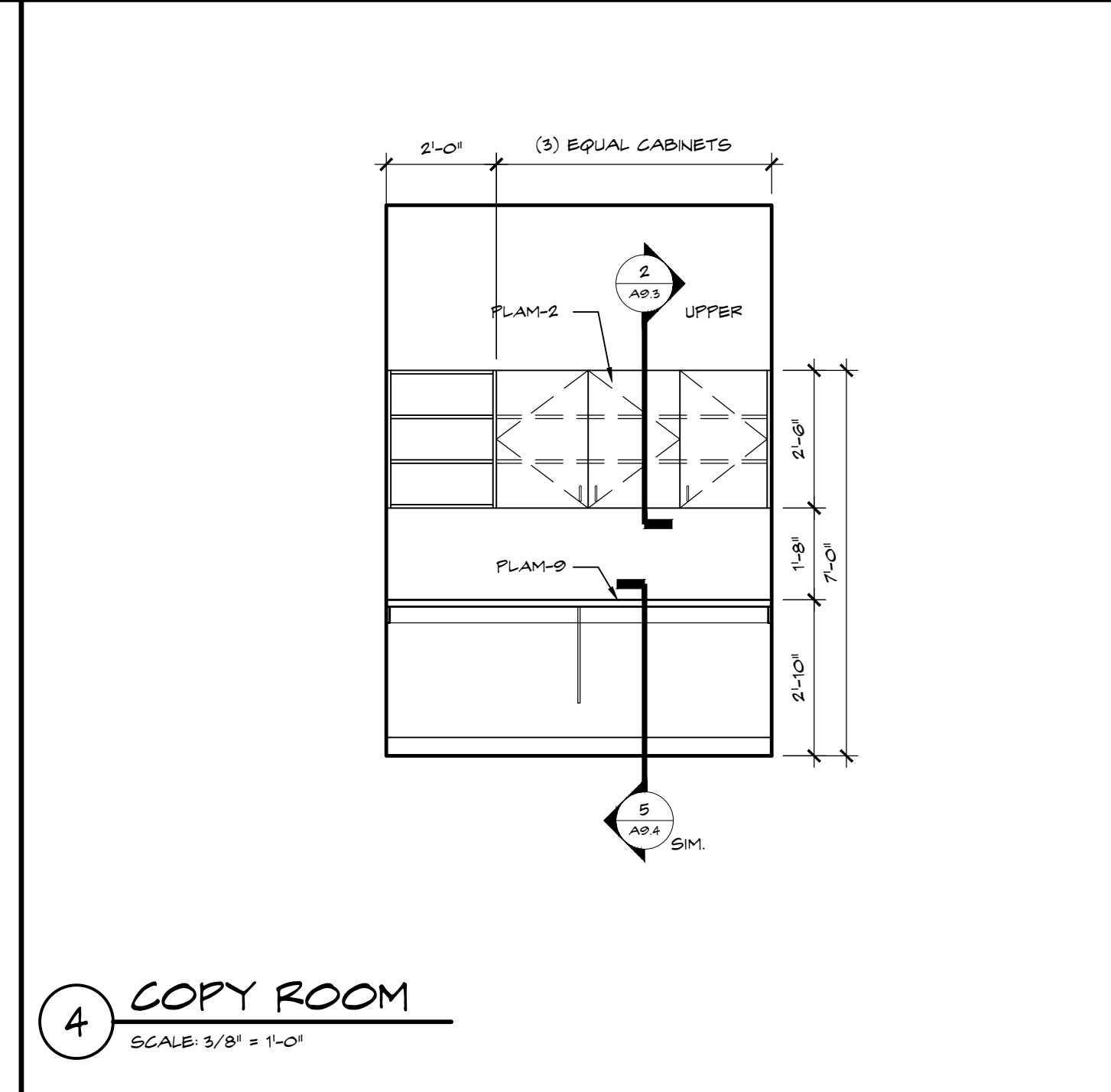
**7 CLINIC**  
SCALE: 1/2" = 1'-0"



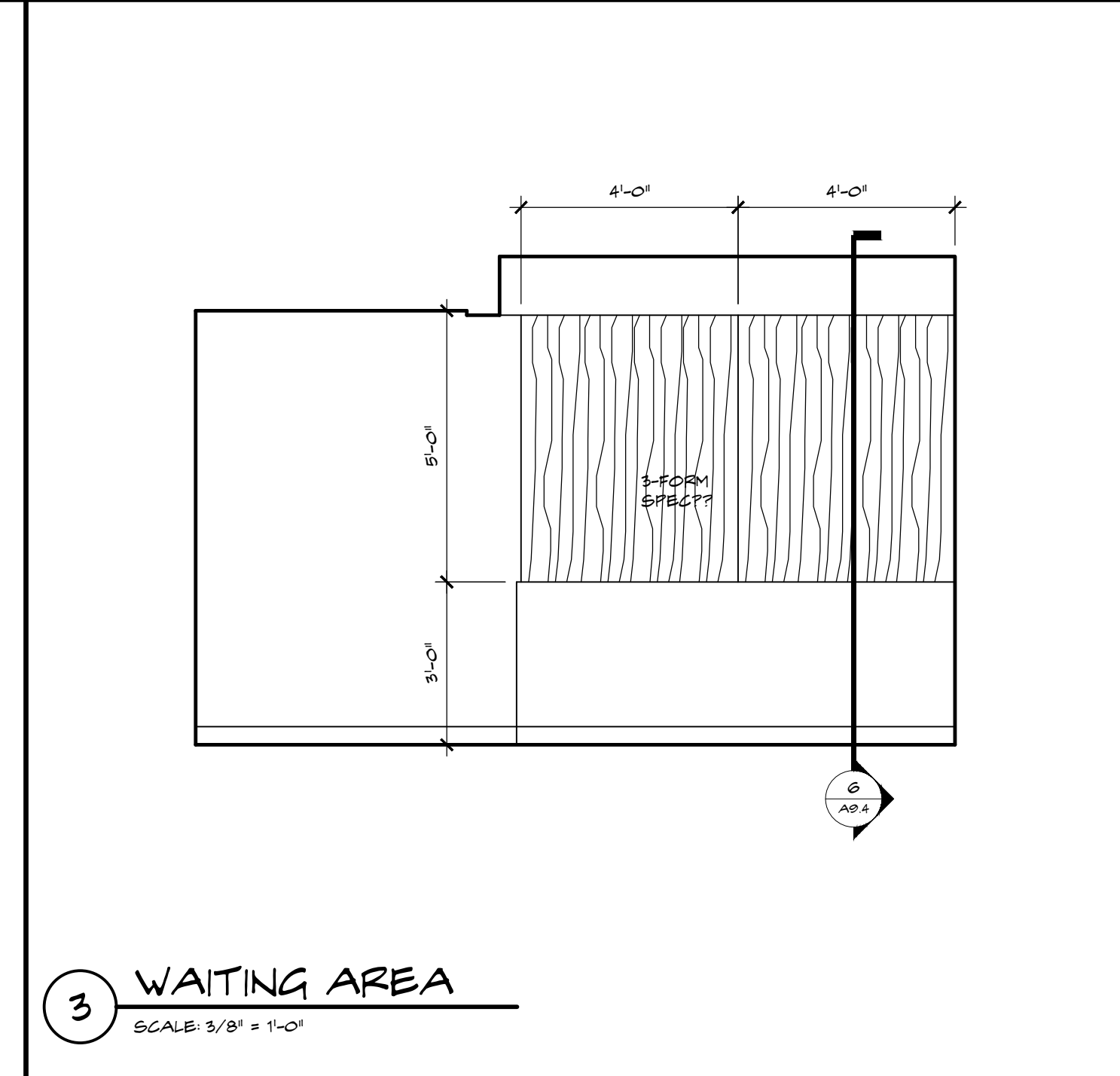
**6 MEETING ROOM**  
SCALE: 3/8" = 1'-0"



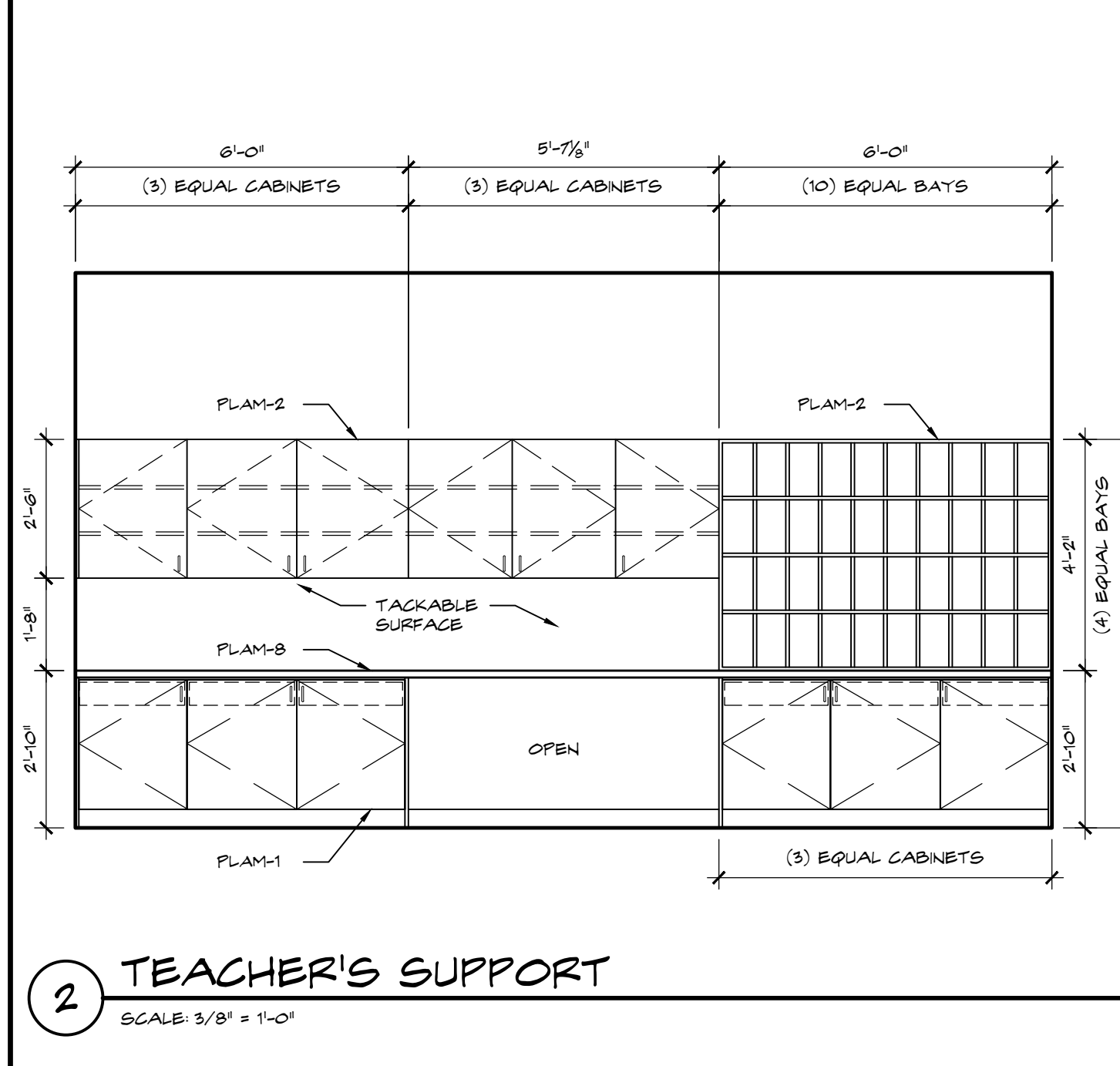
**5 TEACHER'S LOUNGE**  
SCALE: 3/8" = 1'-0"



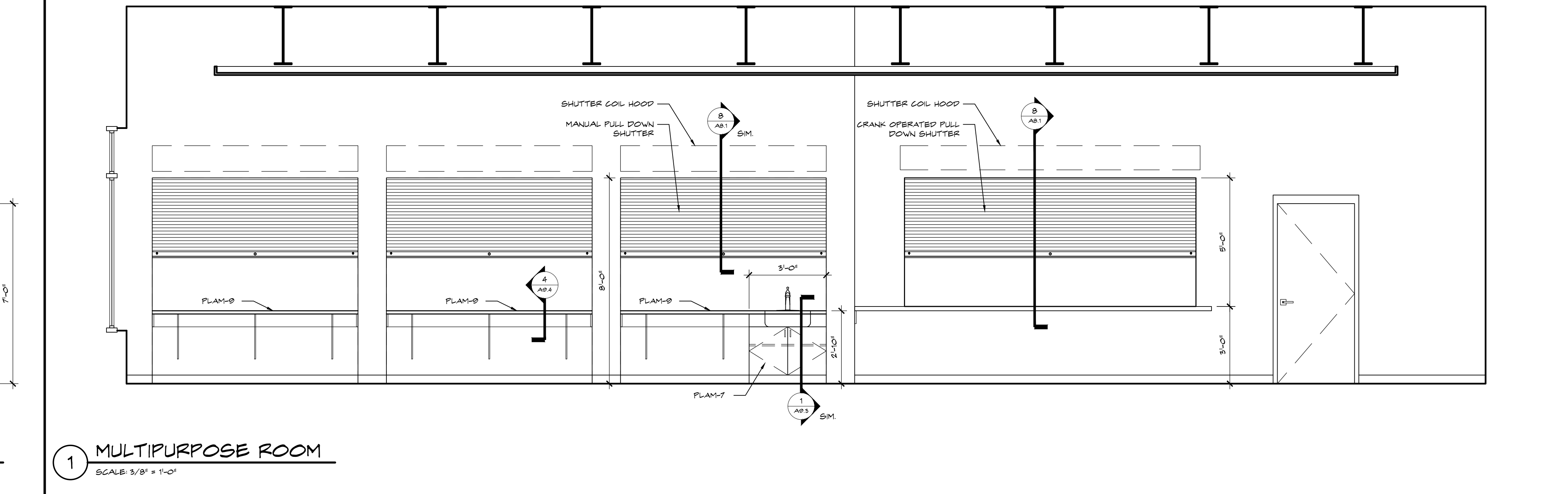
**4 COPY ROOM**  
SCALE: 3/8" = 1'-0"



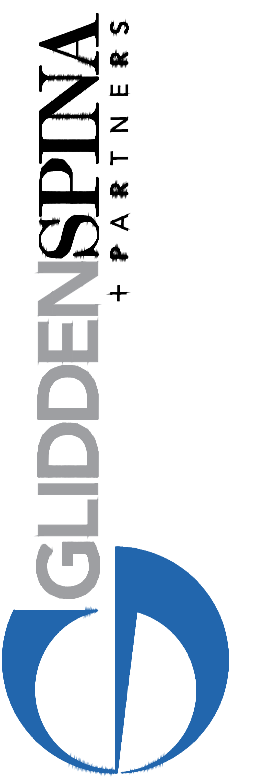
**3 WAITING AREA**  
SCALE: 3/8" = 1'-0"



**2 TEACHER'S SUPPORT**  
SCALE: 3/8" = 1'-0"



**1 MULTIPURPOSE ROOM**  
SCALE: 3/8" = 1'-0"



Architecture - Interior Design  
Keith M. Spina # AH13019

New Building For:  
**OPPORTUNITY INC.**  
EARLY LEARNING CENTER  
4171 Westgate Avenue  
Palm Beach County, Florida

THESE DRAWINGS ARE FOR THE EXCLUSIVE USE OF GLIDDEN SPINA + PARTNERS, INC. AND MAY NOT BE DUPLICATED, REPRODUCED OR USED IN ANY MANNER WITHOUT THE EXPRESS WRITTEN CONSENT OF GLIDDEN SPINA + PARTNERS, INC. ALL RIGHTS RESERVED.

Revisions:


Project no: 14224  
Date: 09.09.16  
Drawn by: WS  
Project Architect: WC / DR

INTERIOR ELEVATIONS  
**A9.1**  
09.09.16 BID/PERMIT