

MILLWORK FINISHES
LAMINATE

- ALL CABINETS/PARTITIONS/COUNTERTOPS OF COMPOSITE WOOD, INCLUDING CORE MATERIALS, MUST CONTAIN NO ADDED UREA-FORMALDEHYDE RESINS. USE SIERRA FINE SUSTAINABLE DESIGN FIBERBOARD (SDF)-MEDEX (OR EQUAL) FOR SINK AREAS.
- ALL LAMINATE ADHESIVES MUST CONTAIN NO ADDED UREA-FORMALDEHYDE.
- ADHESIVES SHALL NOT EXCEED THE VOC CONTENT LIMITS OF ADHESIVES, SEALANTS AND SEALANT PRIMERS. SOUTH COAST AIR QUALITY MANAGEMENT DISTRICT (SCAQMD) RULE #1168 OF SEALANTS USED AS FILLERS MEET OR EXCEED THE REQUIREMENTS OF THE DAY AREA QUALITY MANAGEMENT DISTRICT REGULATION 8, RULE 81.
- COUNTERTOPS - REFER TO ELEVATIONS AND FINISH SCHEDULE FOR FINISH SPECIFICATIONS.
- CABINETS - REFER TO ELEVATIONS AND FINISH SCHEDULE FOR FINISH SPECIFICATIONS.
 - INTERIORS TO BE BLACK MELAMINE
 - CABINET HINGES BASIS OF DESIGN: HAFELE, CONCEALED SELF-CLOSING, NICKEL PLATED STEEL HINGE, PRODUCT # 311.95.501 OR EQUAL.
- DRAWER HARDWARE BASIS OF DESIGN: ACCURIDE 3832HDC HEAVY DUTY SELF CLOSING OR EQUAL.

COVER PLATES

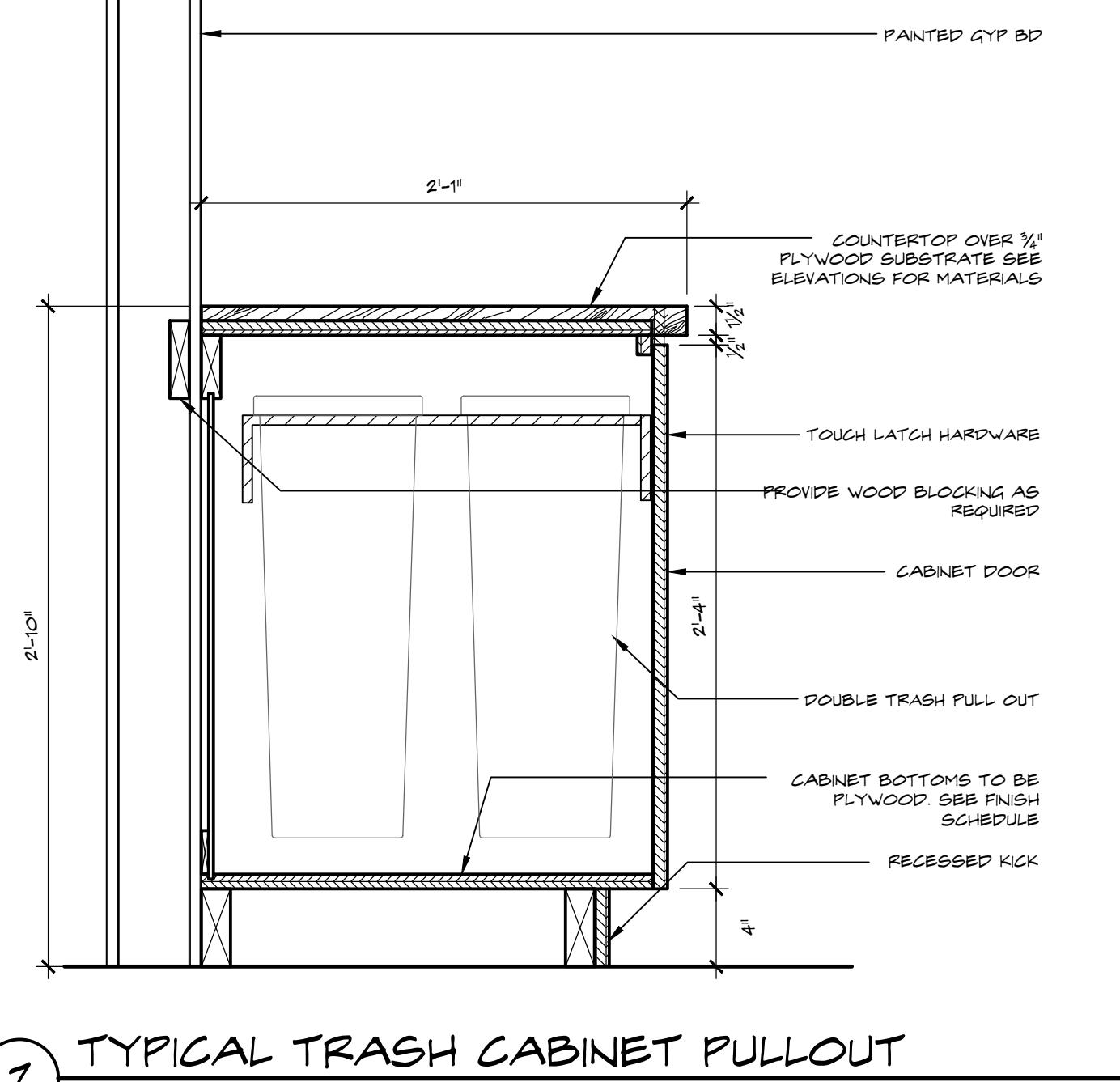
- COLOR: WHITE.

CABINERY DECORATIVE HARDWARE

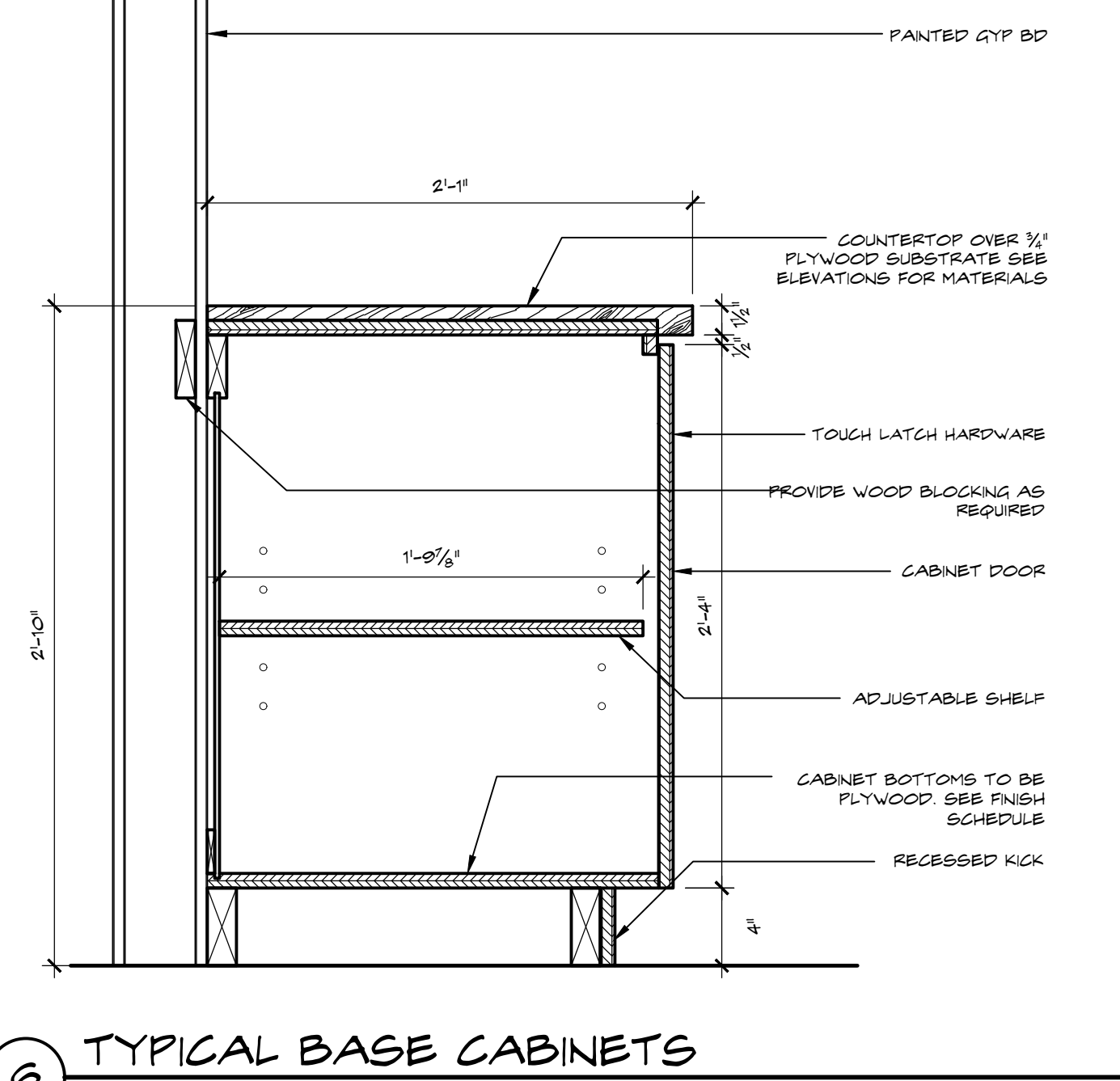
MANUFACTURER:	BEELWITH, HICKORY
STYLE:	GREENWICH PULL
FINISH:	STAINLESS STEEL/MATT
COLLECTION:	10194
SIZE:	4-5/16"

DIRECTION: REFER TO INTERIOR ELEVATIONS.

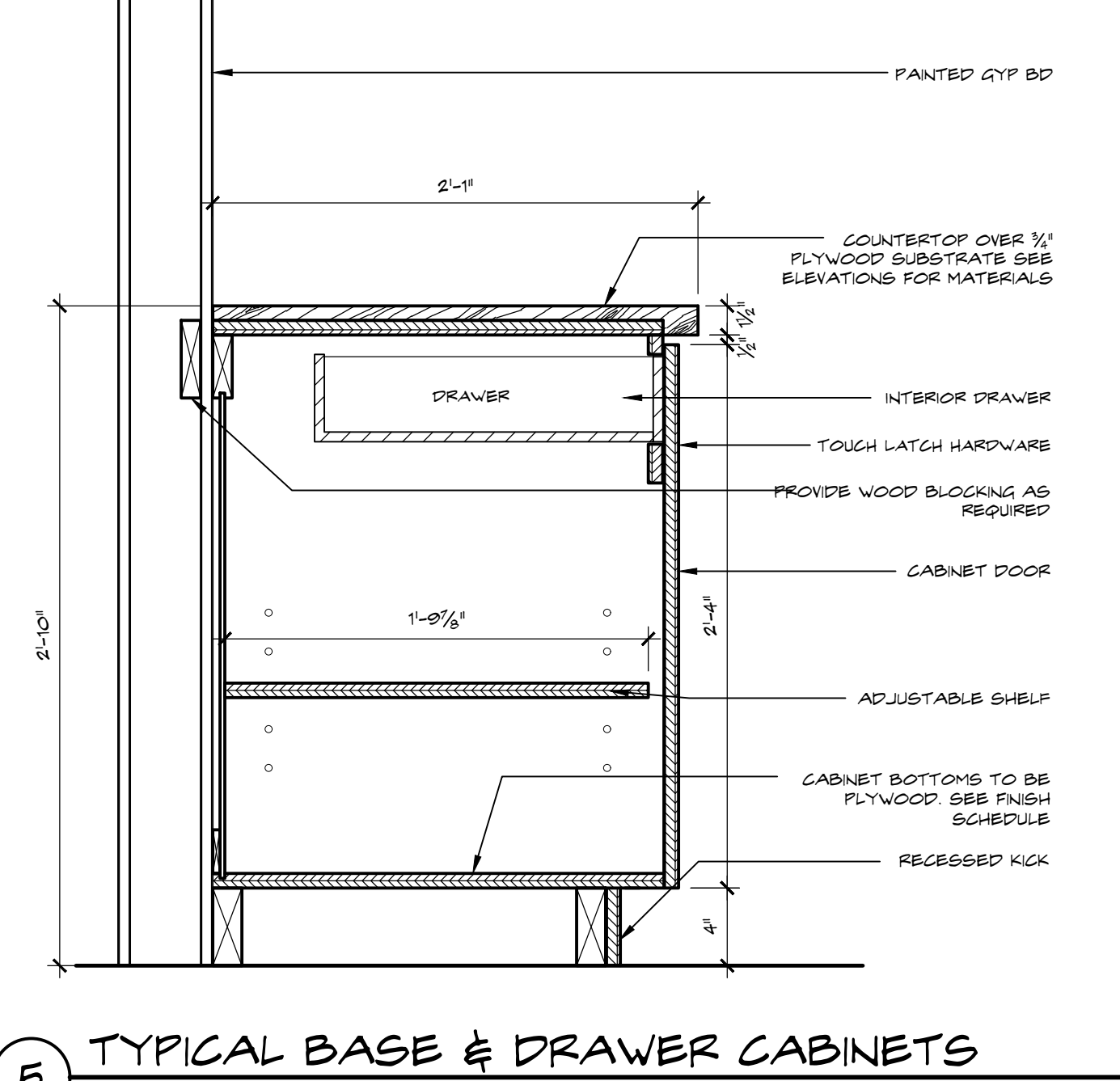
8 MILLWORK SPECIFICATIONS
 SCALE: N.T.S.



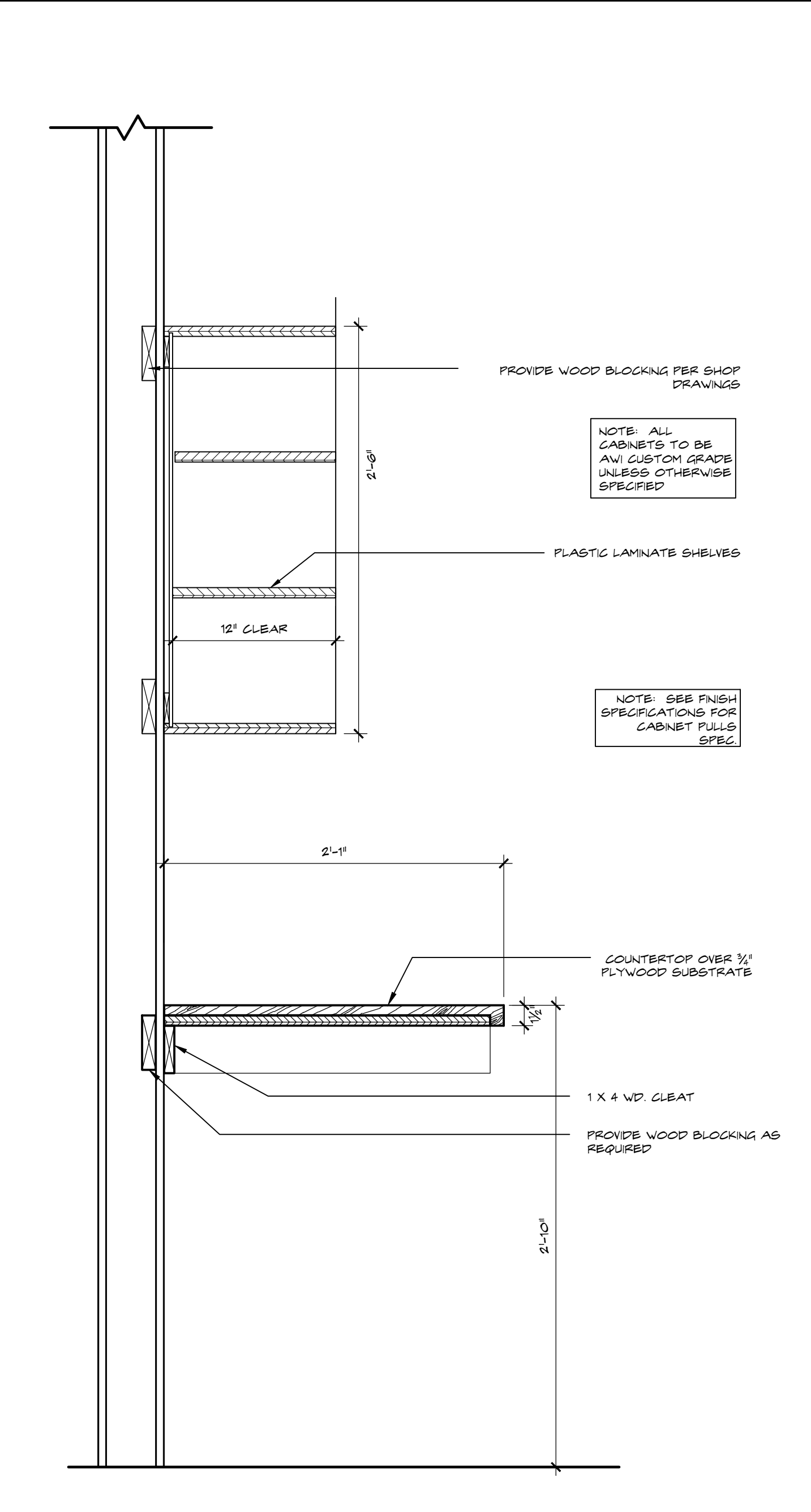
7 TYPICAL TRASH CABINET PULLOUT
 SCALE: 1-1/2" = 1'-0"



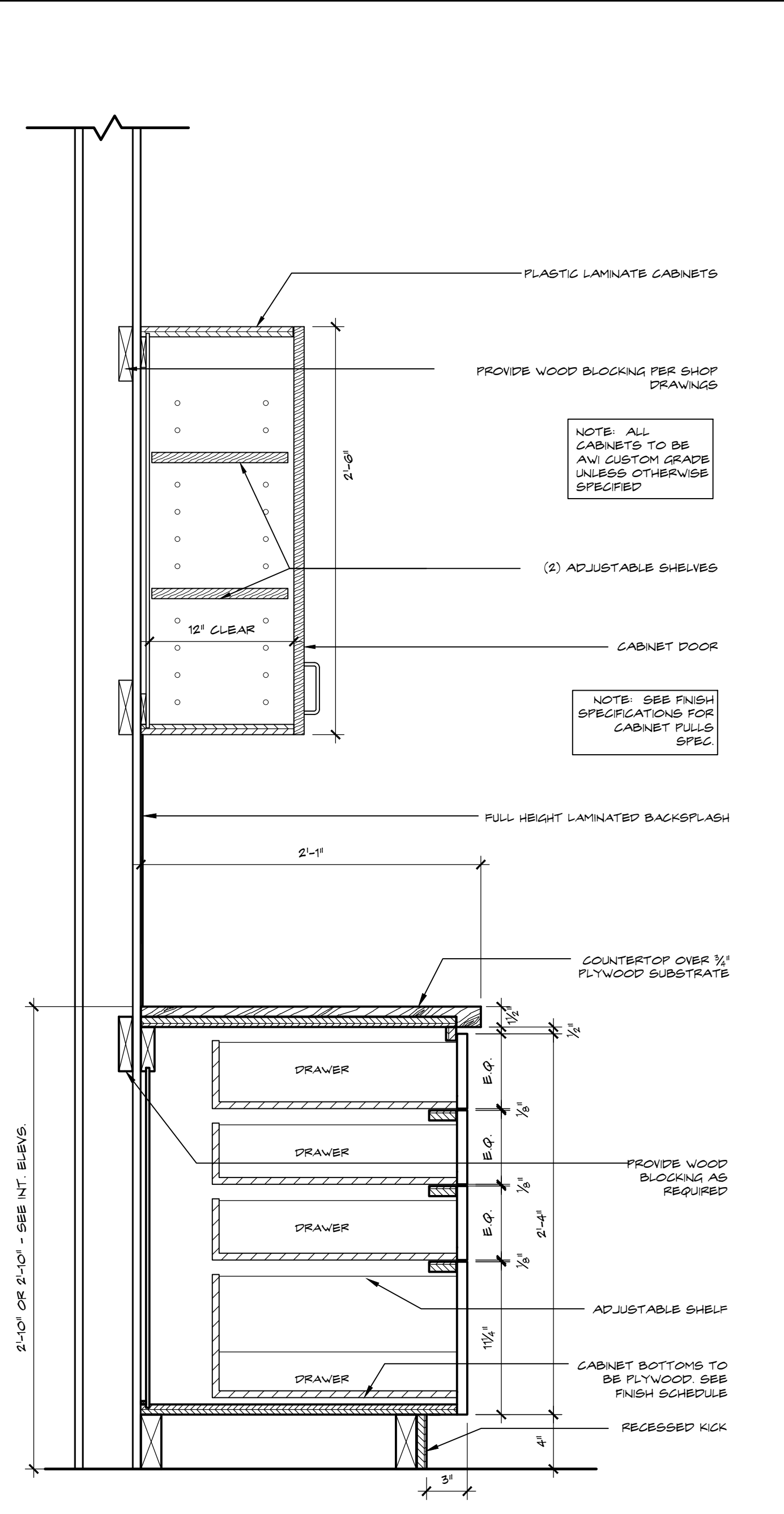
6 TYPICAL BASE CABINETS
 SCALE: 1-1/2" = 1'-0"



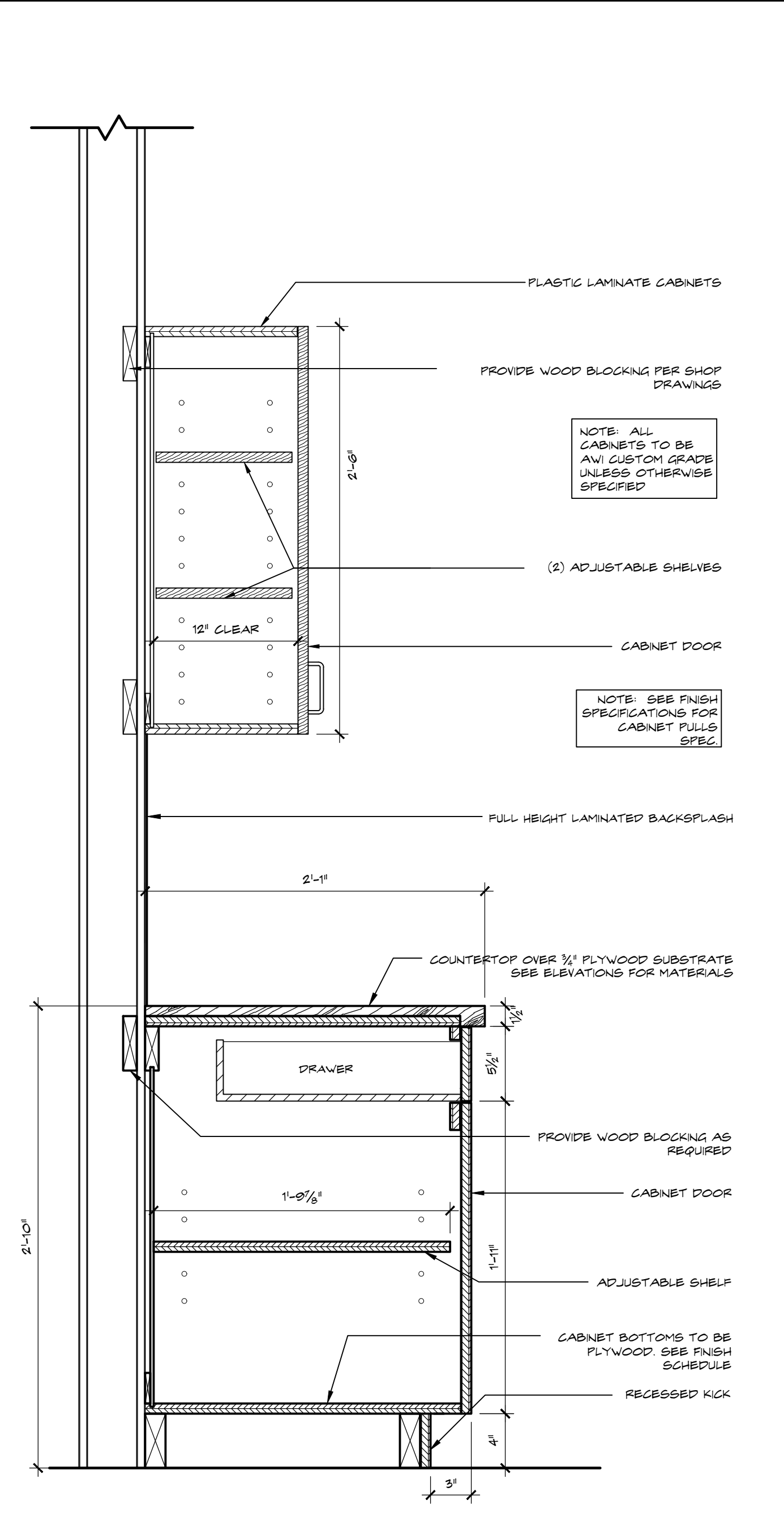
5 TYPICAL BASE & DRAWER CABINETS
 SCALE: 1-1/2" = 1'-0"



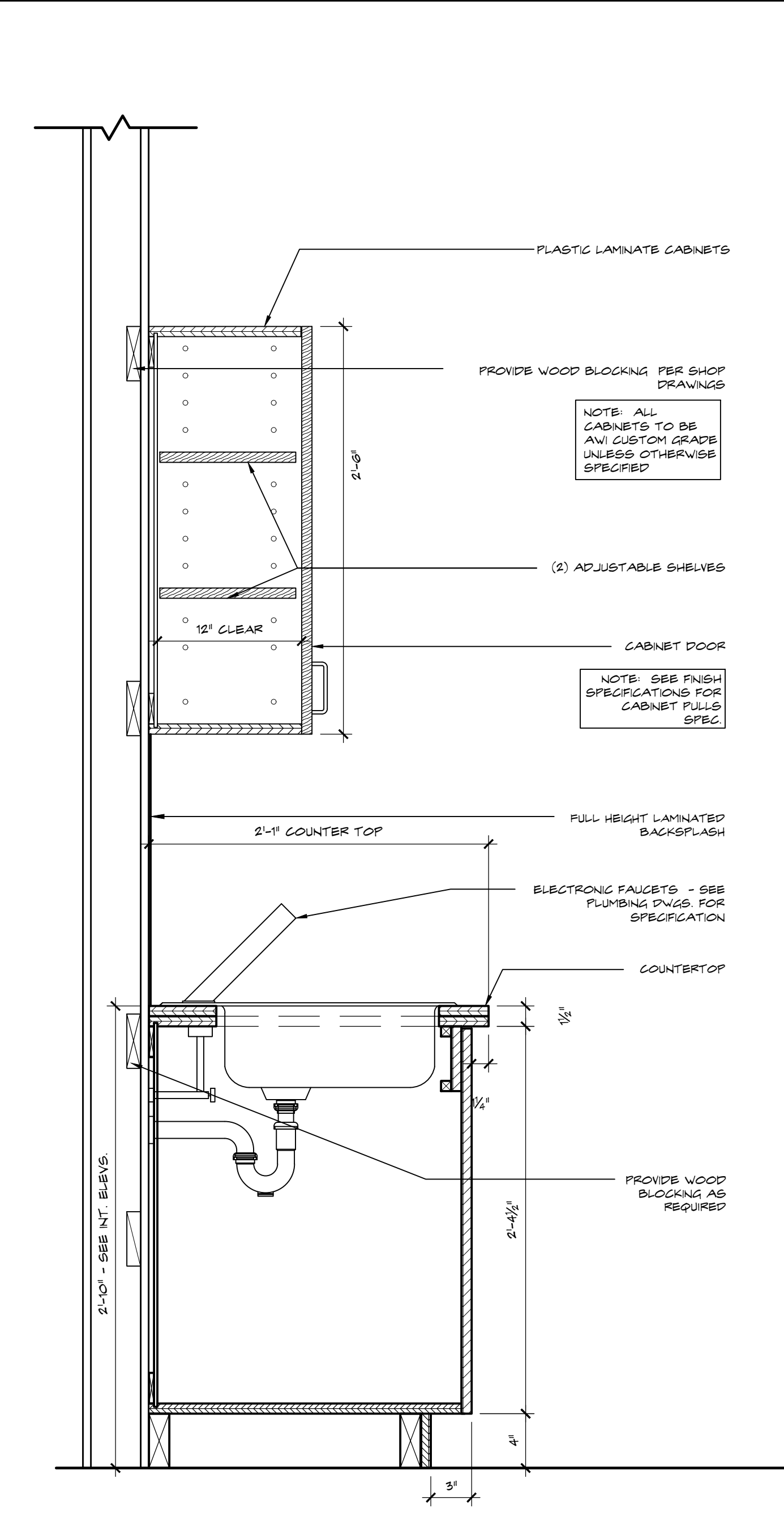
4 TYPICAL OPEN CABINETS
 SCALE: 1-1/2" = 1'-0"



3 TYPICAL DRAWER CABINETS
 SCALE: 1-1/2" = 1'-0"



2 TYPICAL UPPER & LOWER CABINETS
 SCALE: 1-1/2" = 1'-0"



1 TYPICAL SINK CABINETS
 SCALE: 1-1/2" = 1'-0"

New Building For:
OPPORTUNITY INC.
 EARLY LEARNING CENTER

4171 Westgate Avenue
 Palm Beach County, Florida

THESE DRAWINGS ARE FOR THE EXCLUSIVE USE OF GLIDDEN SPINA + PARTNERS, INC. AND MAY NOT BE DUPLICATED, REPRODUCED OR USED IN ANY MANNER WITHOUT THE EXPRESS WRITTEN CONSENT OF GLIDDEN SPINA + PARTNERS, INC. ALL RIGHTS RESERVED.

Revisions:

Project no: 14224
 Date: 09.09.16
 Drawn by: WS
 Project Architect: WC / DR