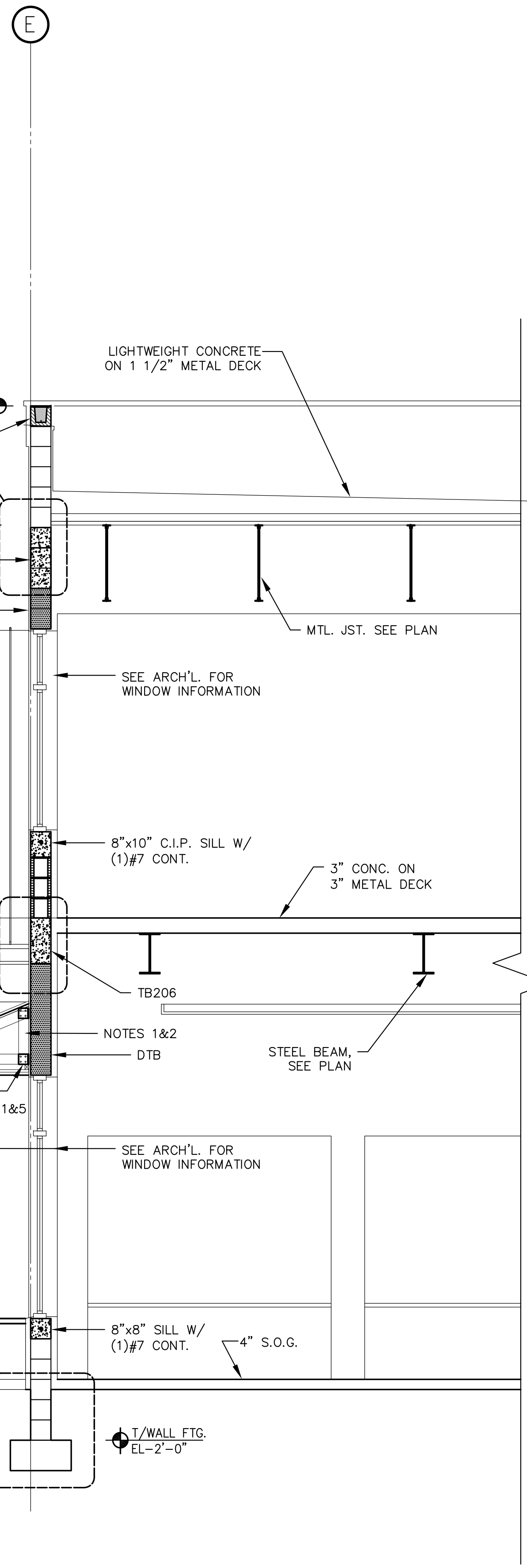


METAL STUD AND PLYWOOD CONNECTIONS AT AWNINGS ALONG GRID LINE F:

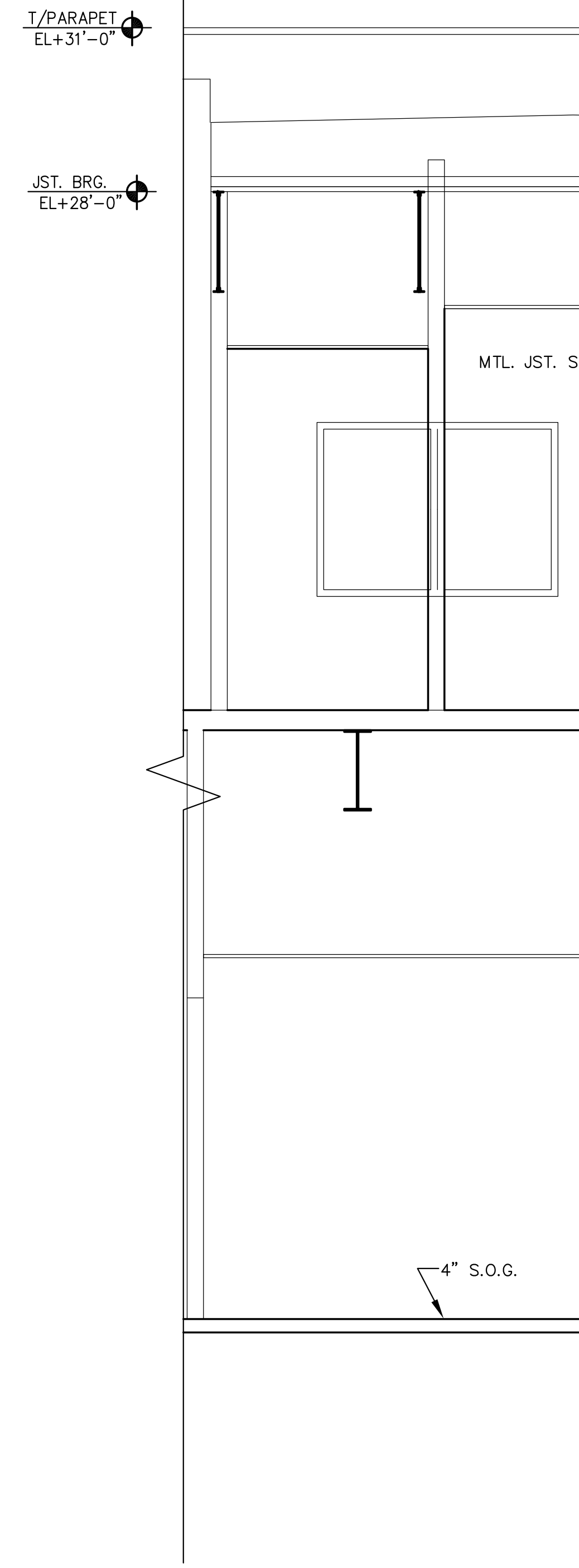
- 5/8" THK FRT PLYWOOD SHEATHING. PROVIDE 10-16x1-13/16" PSD FLAT SCREWS AT 12" O.C. ALONG STUD SPAN FOR PLYWOOD TO MTL STUD FLANGE CONN.
- 4" 18ga. CEE MTL STUDS VERT. AT 16" O.C.
- 16ga. CLIP ANGLE W/(5)#10 TEKS FOR CLIP TO MTL STUD WEB CONN. AND (5) 1/4"x1-3/4" TAPCONS FOR CLIP TO CMU WALL CONN. MAKE CLIP ANGLE FULL WIDTH/HEIGHT OF MTL STUDS.
- (4)#10 TEKS FOR MTL STUD TO STUD CONN.
- 4" 18ga. CEE MTL STUD HORIZ. OR DIAG. BRACE AT 16" O.C.
- AT ALL INSIDE AND OUTSIDE CORNERS, PROVIDE 2"x2"x18ga ANGLE WITH (1) #10 TEK TO EACH STUD FLANGE.

E



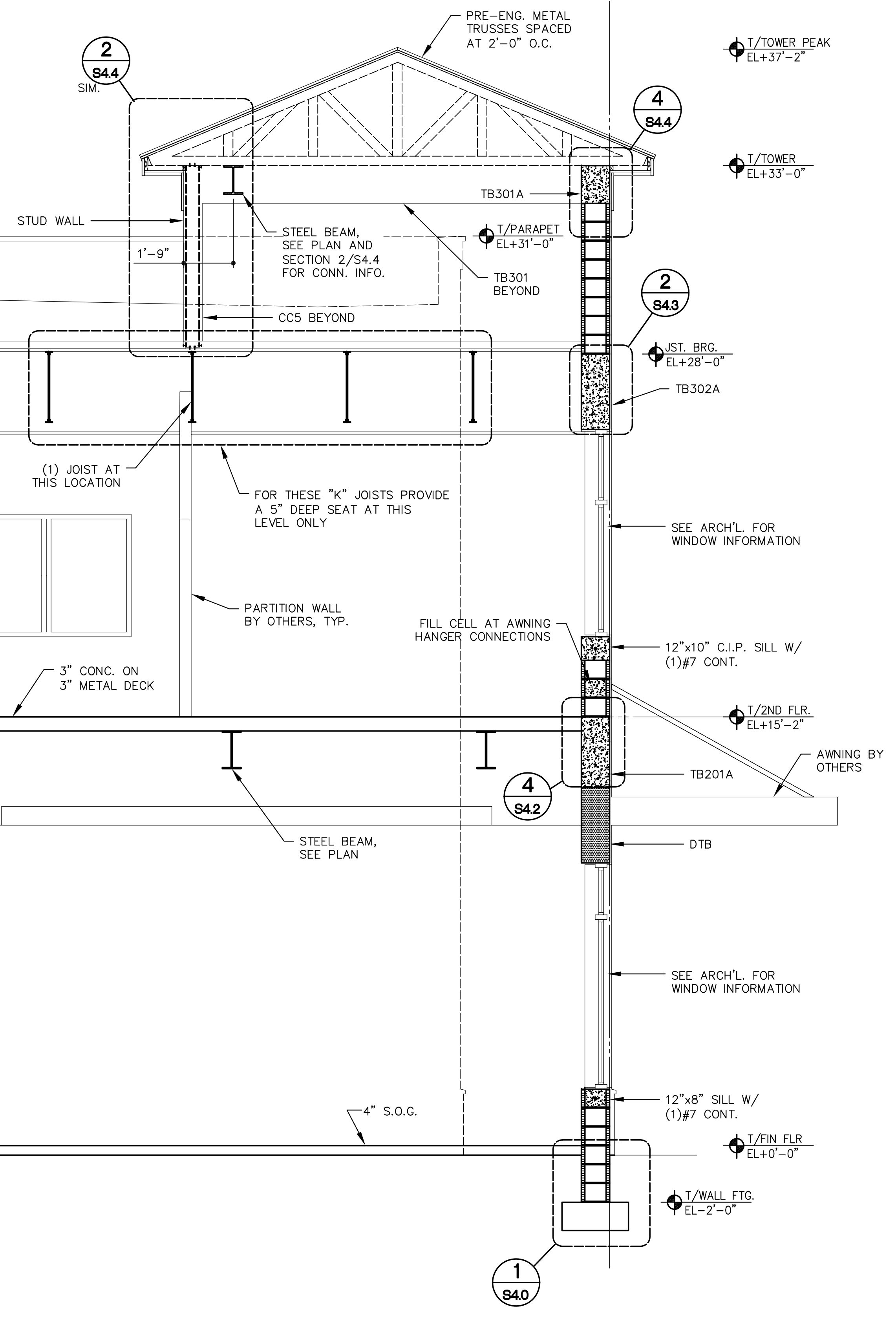
1 BUILDING SECTION
SCALE: 3/8" = 1'-0"
NOTE: FOR DTB REINF. INFO. REFER TO SECTION 8/S4.2

T/PARAPET
EL+31'-0"



2 BUILDING SECTION
SCALE: 3/8" = 1'-0"
NOTE: FOR DTB REINF. INFO. REFER TO SECTION 8/S4.2

A



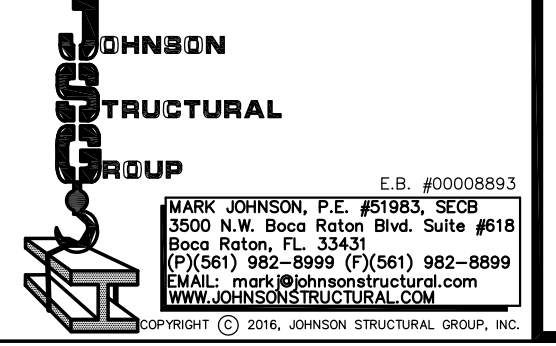
207 SIXTH STREET
WEST PALM BEACH, FLORIDA 33401
ph : 561.684.6844 • gliddenspina.com
FL Lic. # AA26002399



New Building For:
OPPORTUNITY INC.
EARLY LEARNING CENTER
4171 Westgate Avenue
Palm Beach County, Florida

COPYRIGHT 2016
THESE DRAWINGS ARE FOR THE EXCLUSIVE USE OF GLIDDEN SPINA + PARTNERS, INC. AND MAY NOT BE REPRODUCED, REPLICATED OR USED IN ANY MANNER WITHOUT THE EXPRESS WRITTEN CONSENT OF GLIDDEN SPINA + PARTNERS, INC. ALL RIGHTS RESERVED.

sheet title: STRUCTURAL BUILDING SECTIONS	revisions:
file name:	
project no: 16024	date: 09/09/16
drawn by: S.G.	checked by: P.S.



S3.1
09.09.16 BID/PERMIT