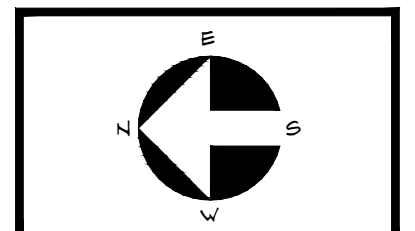


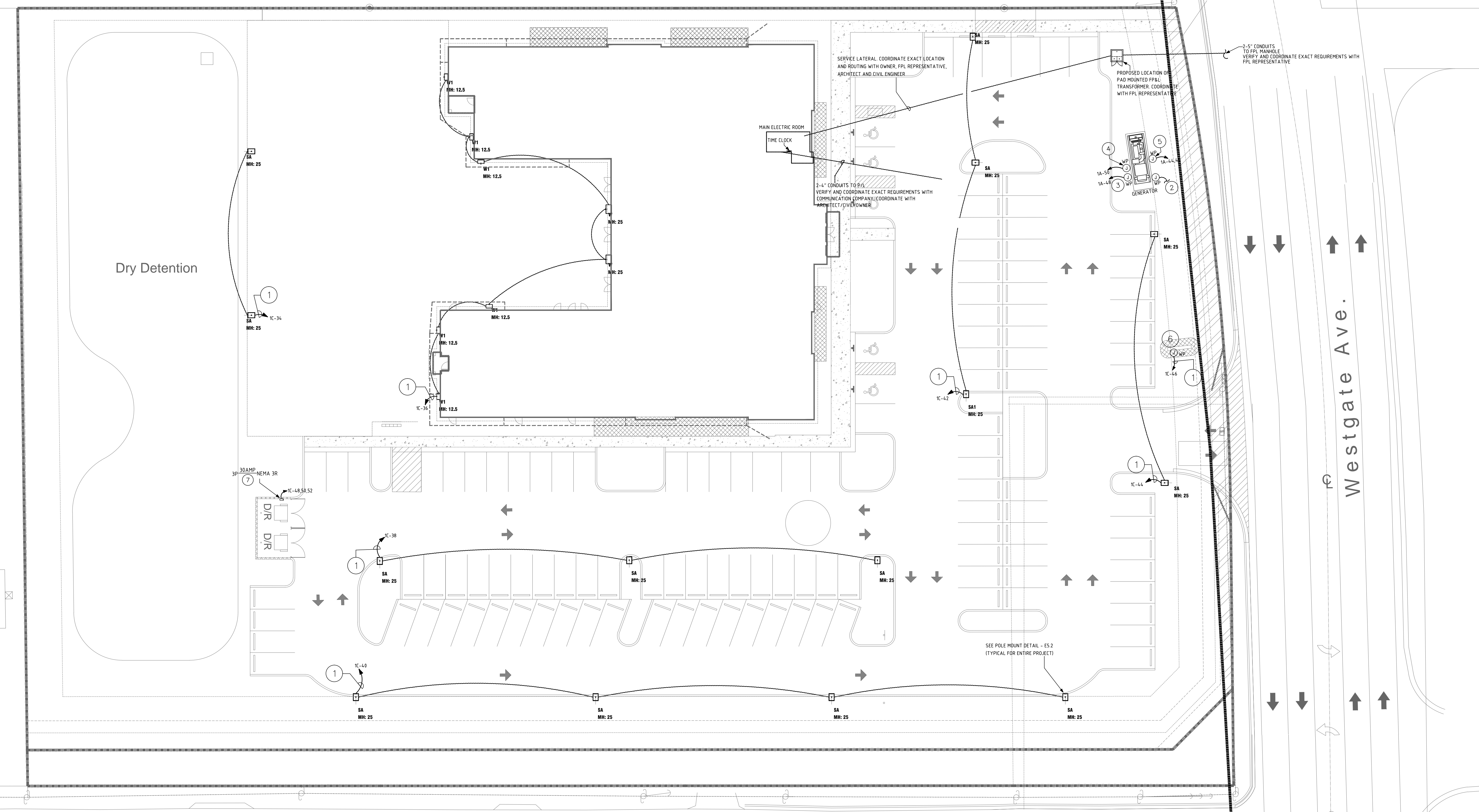
THESE DRAWINGS ARE FOR THE EXCLUSIVE USE OF GLIDDEN SPINA + PARTNERS, INC. AND MAY NOT BE DUPLICATED, REPRODUCED OR USED IN ANY MANNER WITHOUT THE EXPRESS WRITTEN CONSENT OF GLIDDEN SPINA + PARTNERS, INC. ALL RIGHTS RESERVED.

Revisions:

Project no: 15435
Date: 09.09.16
Drawn by: RB/SK/JS
Project Architect: BJ



ES1.1
09.09.16 BID/PERMIT



Donnell Rd

PERMIT / BID SET: 09/07/16

FRAE CONSULTING

700 WEST HILLSBORO BLVD., BLDG. #1, SUITE 204
DEERFIELD BEACH, FLORIDA 33441
TEL: (561) 391-9292 FAX: (561) 391-9899
CERTIFICATE OF AUTHORIZATION NO. 28107
LIRIBULA IAPRANTE, P.E. LICENSE #723122
STEPHEN F. ROLLIN, P.E. LICENSE #3642B
DONALD H. AUSTIN, JR., P.E. LICENSE #60651
JASON BARBER, P.E. LICENSE #72050
E-MAIL: INFO@FRAEBUILDING.COM
DESIGNED BY: BJ/SK/JS PM: BJ P/N 15434

- KEY NOTES**
1. WIRE CIRCUIT THROUGH LIGHTING CONTROL PANEL WITH AN ASTRONOMICAL TIME CLOCK AND PHOTOCELL.
 2. PROVIDE 2#12 & 1#12G IN 1" CONDUIT FOR GENERATOR START/STOP WIRING TO AUTOMATIC TRANSFER SWITCH "ATS"
 3. PROVIDE JUNCTION BOX IN GENERATOR ENCLOSURE FOR ELECTRICAL CONNECTION TO BATTERY CHARGER
 4. PROVIDE JUNCTION BOX IN GENERATOR ENCLOSURE FOR ELECTRICAL CONNECTION TO LIGHTING FIXTURE AND RECEPTACLE FURNISHED WITH GENERATOR ENCLOSURE.
 5. PROVIDE JUNCTION BOX IN GENERATOR ENCLOSURE FOR ELECTRICAL CONNECTION TO GENERATOR JACKET HEATER.
 6. PROVIDE WEATHERPROOF JUNCTION BOX FOR ELECTRICAL CONNECTION TO MONUMENT SIGN. COORDINATE EXACT LOCATION AND REQUIREMENTS WITH ARCHITECT/OWNER AND SUPPLIER PRIOR TO ROUGH-IN.
 7. PROVIDE FUSES PER MANUFACTURER RECOMMENDATIONS.
 8. DISCONNECT FOR TRASH COMPACTOR. COORDINATE EXACT LOCATION WITH OWNER, ARCHITECT, AND SUPPLIER PRIOR TO ROUGH-IN.

1 ELECTRICAL SITE PLAN
SCALE: 1/8" = 1'-0"

SITE POLE NOTE

SITE POLE STRUCTURAL DETAILS ARE TO BE SUBMITTED TO THE BUILDING DEPARTMENT FOR APPROVAL PRIOR TO CONSTRUCTION BY CONTRACTOR

GENERATOR NOTES

1. CONTRACTOR SHALL PROVIDE PAD (DESIGN PER FBC, MANUFACTURER SPECS, INCLUDING HOLD DOWNS, BY STRUCTURAL PE) TO SUPPORT GENERATOR AND BASE MOUNTED DIESEL TANK.
2. GENERATOR SHALL BE INSTALLED AT CURRENT BASE FLOOD ELEVATION OR ABOVE (AS DEFINED BY CIVIL/ARCHITECT).
3. PROVIDE SIGNAGE AS PER NEC.

SITE LIGHTING NOTES

1. COORDINATE AND VERIFY ALL SITE ELECTRICAL REQUIREMENTS WITH ARCHITECT PRIOR TO ANY CONSTRUCTION/ INSTALLATION.
2. THE COMPLETE SITE LIGHTING POLE MOUNTED ASSEMBLY MUST WITHSTAND A MINIMUM 175 MPH WINDLOADS. CALCULATIONS AND FOUNDATION DESIGN BY CIVIL/STRUCTURAL ENGINEER.
3. PROVIDE IN-LINE FUSES AT EACH POLE, ONE IN EACH HOT LEG.
4. ALL SITE LIGHTING CONDUITS SHALL BE BURIED AT A MINIMUM OF 24" BELOW FINISHED GRADE. PROVIDE 1" CONDUIT MINIMUM
5. ALL SITE LIGHTING SHALL BE TIME CLOCK/PHOTOCELL CONTROLLED UNLESS SPECIFIED OTHERWISE.
6. SEE 9/E5.2 FOR CONC. POLE DETAILS.

PRIOR TO SUBMITTING THE BID, THE CONTRACTOR SHALL FIELD VERIFY ALL EXISTING CONDITIONS AND INFORM THE ARCHITECT AND THE ENGINEER OF ANY DISCREPANCY BETWEEN THESE DOCUMENTS AND THE EXISTING CONDITIONS AND SHALL INCLUDE IN THE BID TO CORRECT THE SAME AS DIRECTED. THE ENGINEER AND THE ARCHITECT, ARE NOT RESPONSIBLE FOR ANY ADDITIONAL COSTS RESULTING FROM VERIFYABLE EXISTING CONDITIONS DISCOVERED AFTER CONTRACT HAS BEEN AWARDED. NO CHANGES SHALL BE MADE TO THESE PLANS WITHOUT PRIOR APPROVAL FROM THE ENGINEER OF RECORD. ALL CHANGES SHALL BE SUBMITTED FOR REVIEW PRIOR TO INSTALLATION. NOT FOR BID UNTIL PERMIT HAS BEEN ISSUED.