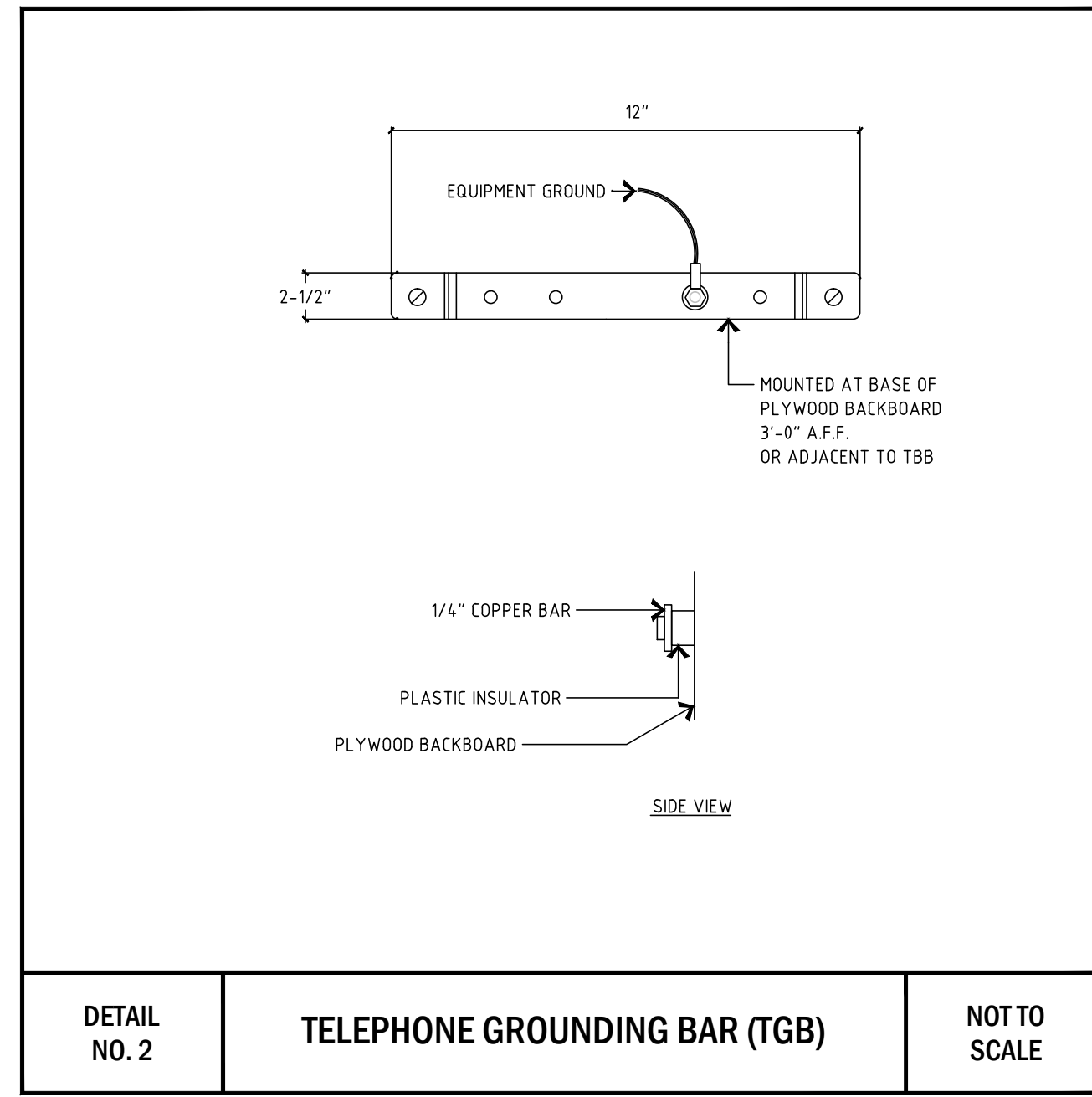
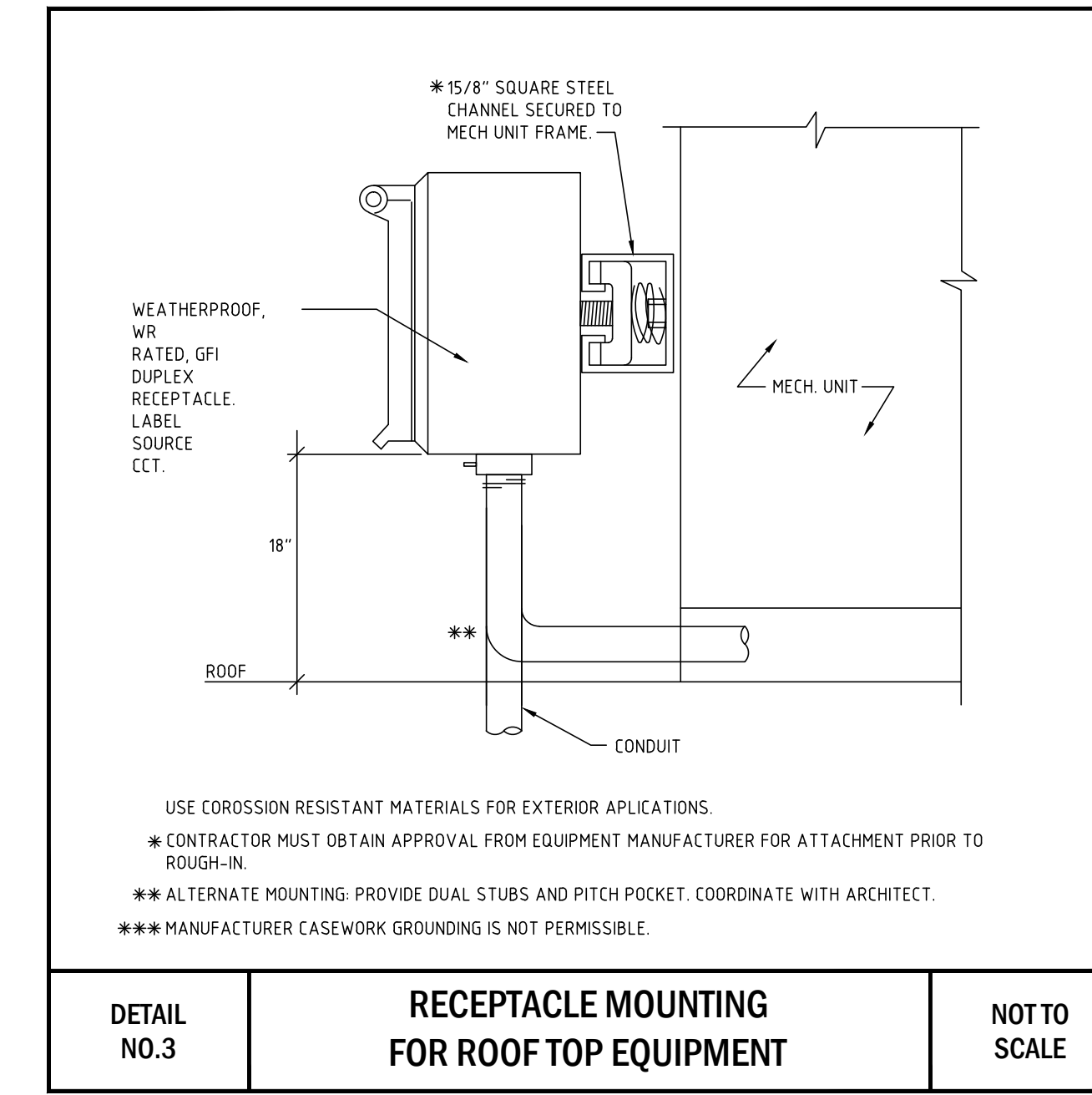


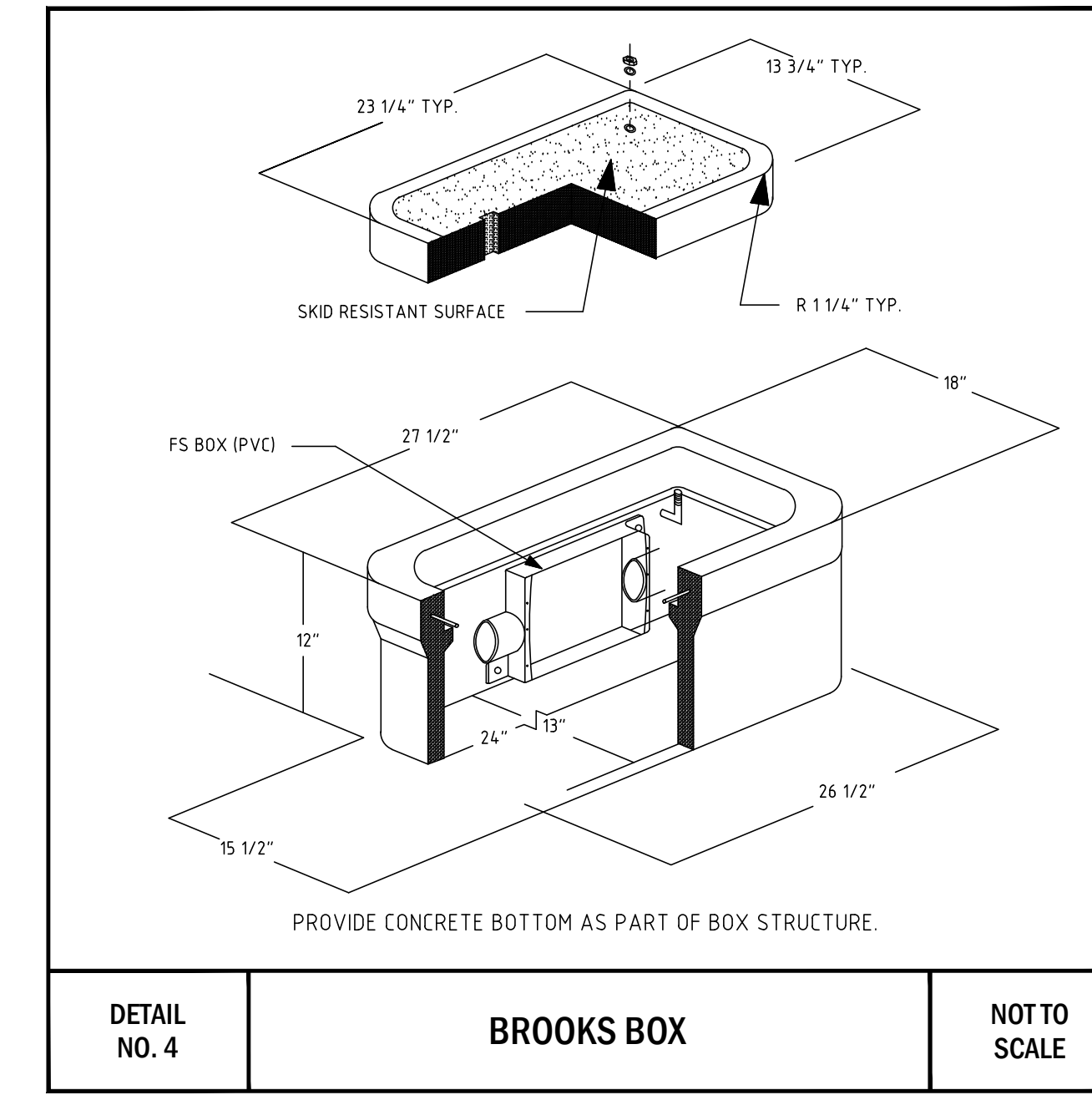
DETAIL NO. 1 GROUND BAR NOT TO SCALE



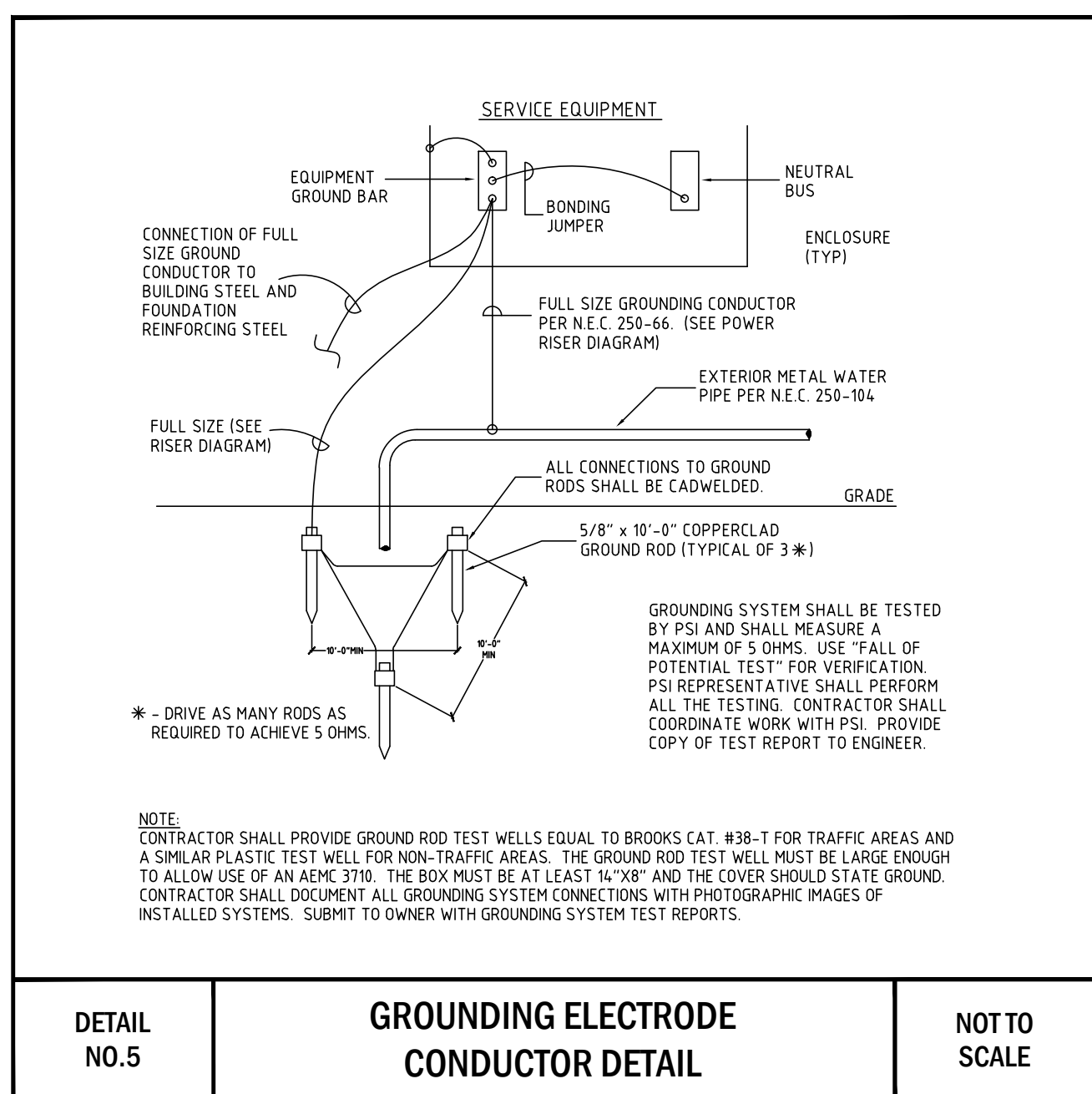
DETAIL NO. 2 TELEPHONE GROUNDING BAR (TGB) NOT TO SCALE



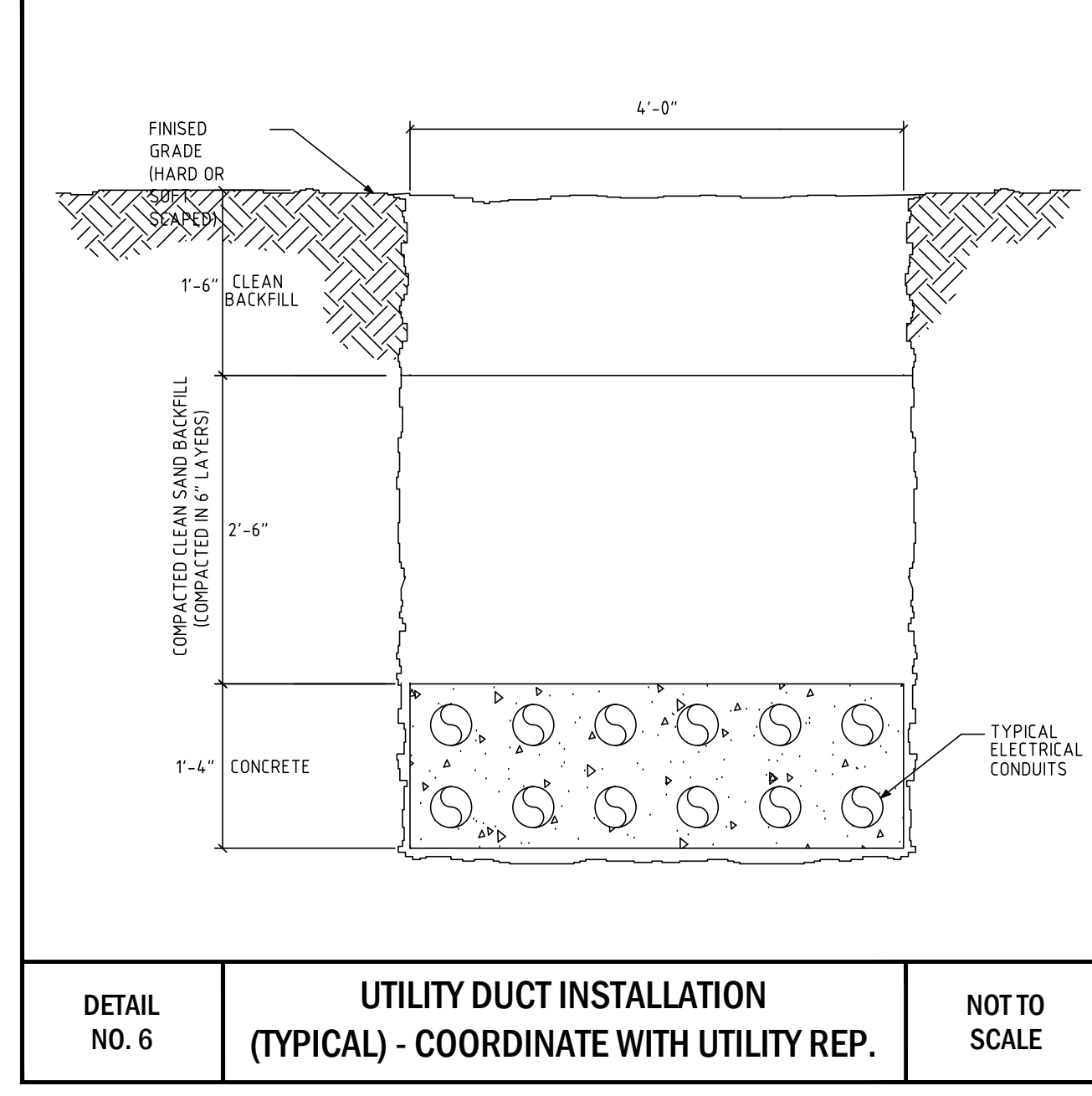
DETAIL NO. 3 RECEPTACLE MOUNTING FOR ROOF TOP EQUIPMENT NOT TO SCALE



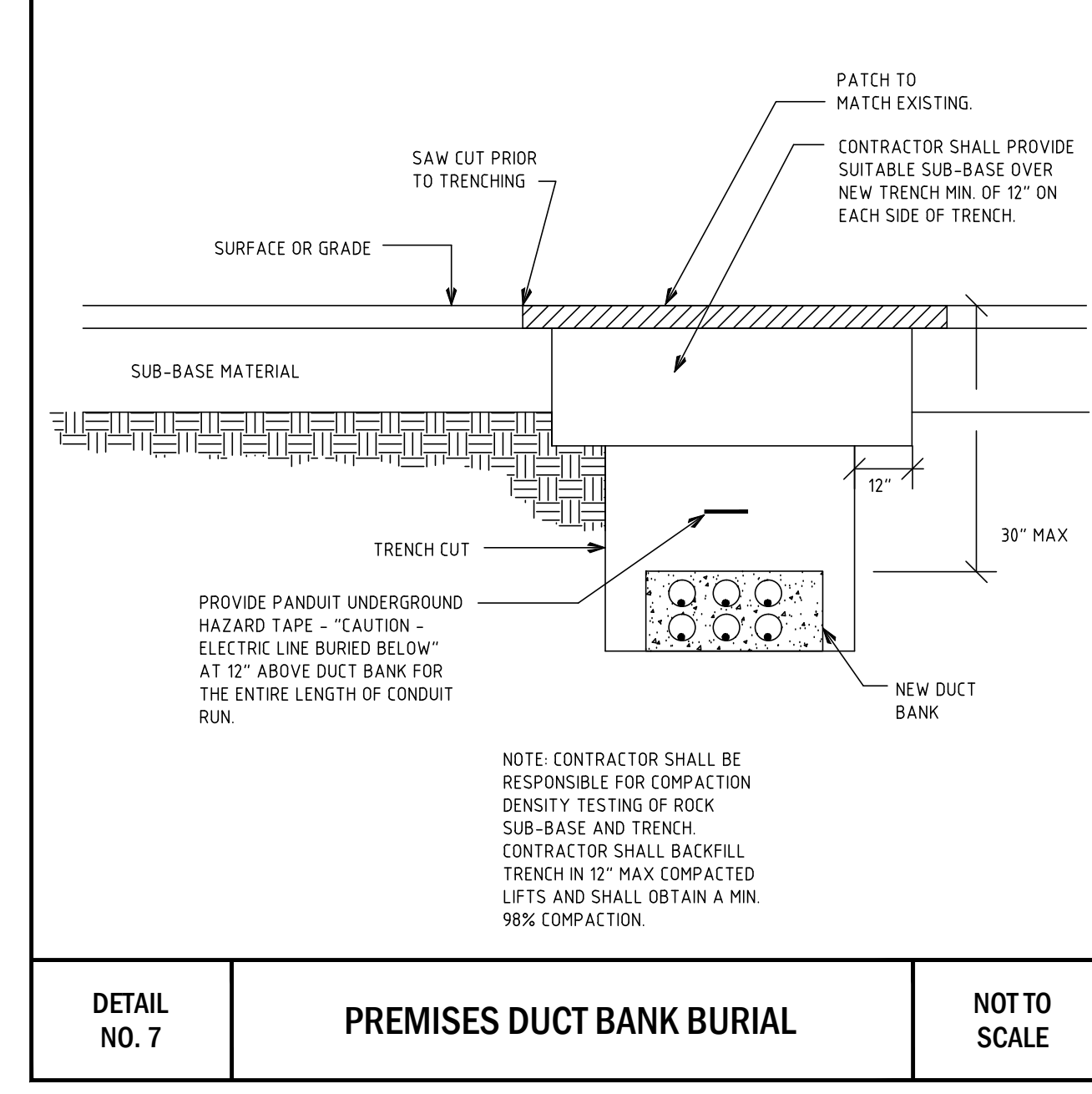
DETAIL NO. 4 BROOKS BOX NOT TO SCALE



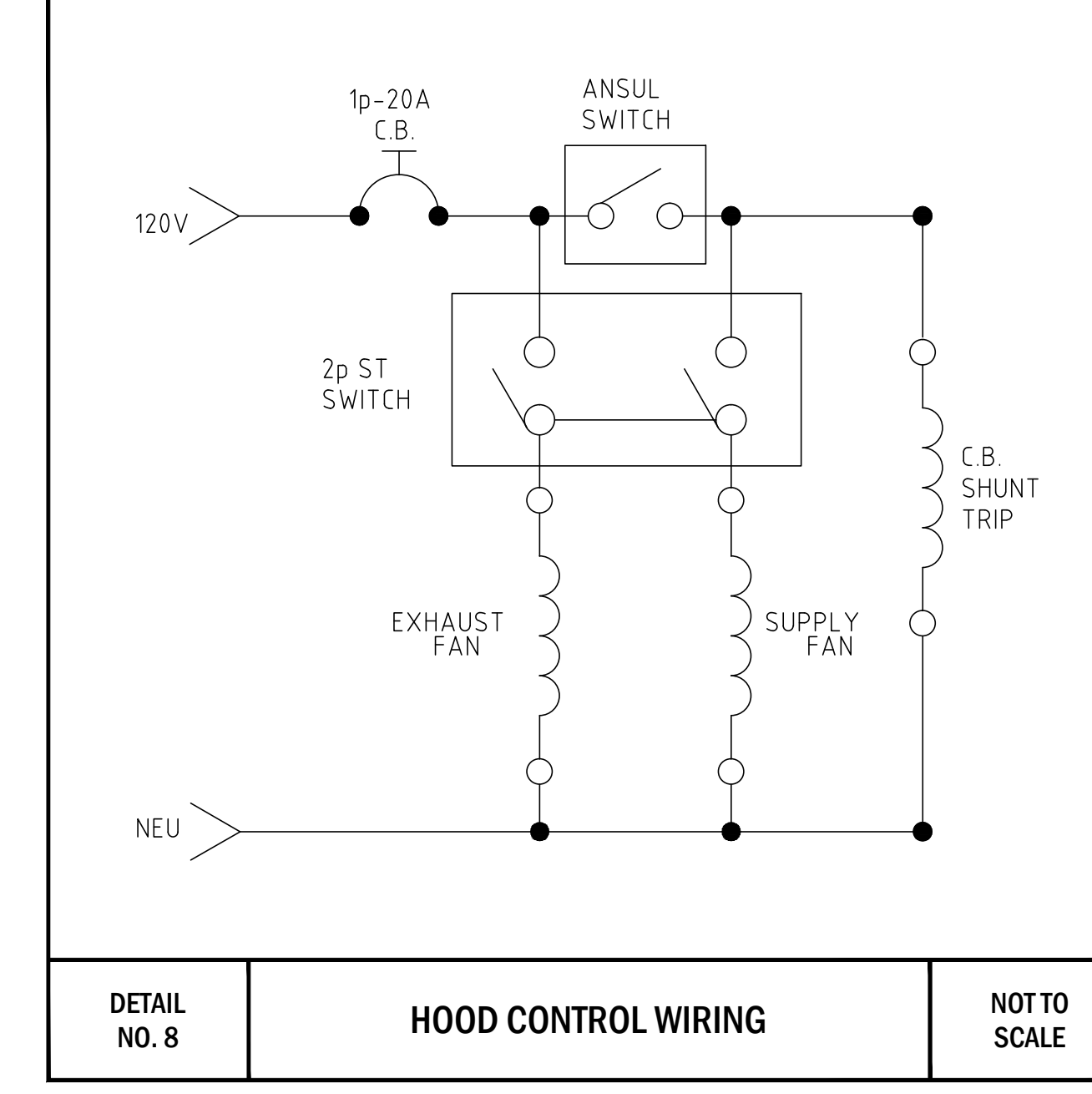
DETAIL NO. 5 GROUNDING ELECTRODE CONDUCTOR DETAIL NOT TO SCALE



DETAIL NO. 6 UTILITY DUCT INSTALLATION (TYPICAL) - COORDINATE WITH UTILITY REP. NOT TO SCALE



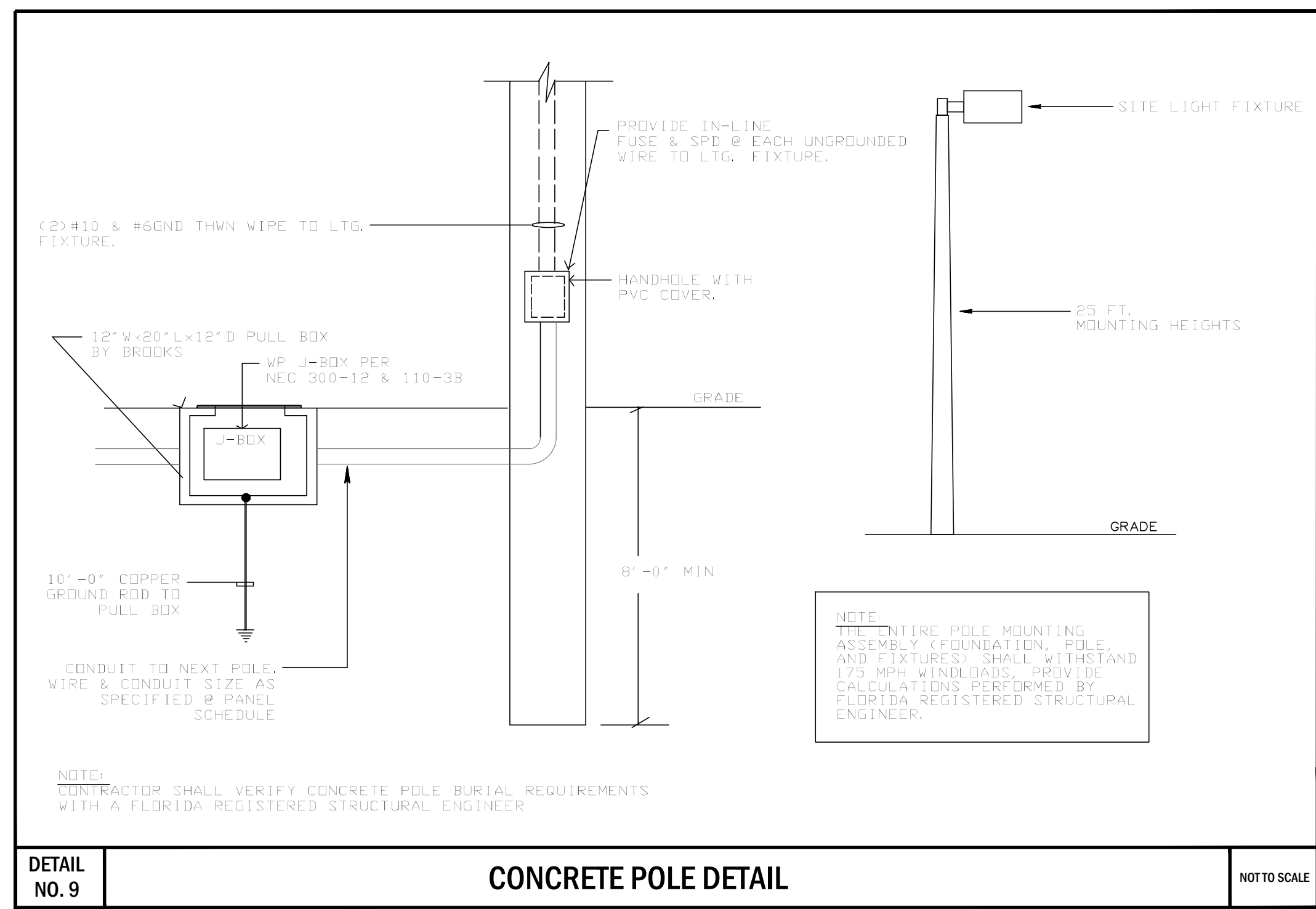
DETAIL NO. 7 PREMISES DUCT BANK BURIAL NOT TO SCALE



DETAIL NO. 8 HOOD CONTROL WIRING NOT TO SCALE

**TRIANGULAR GROUNDING-GENERAL NOTE**

# 3/0 AWG BARE CONTINUOUS GROUNDING ELECTRODE STEEL REBAR FOR MAIN SERVICE GROUNDING. CONNECT TO INTERIOR METALLIC COLD WATER PIPE, CONCRETE ENCASED STEEL REBAR IN BUILDING FOUNDATION AND THREE 5/8" x 30" COPPERCLAD GROUND RODS DRIVEN WITH BENTONITE # 1937-R IN TRIPOISE CONFIGURATION. MINIMUM DISTANCE BETWEEN RODS SHALL BE 30 FEET. GROUNDING RESISTANCE SHALL HAVE MAXIMUM READING OF 5 OHMS. IF REQUIRED PROVIDE ADDITIONAL GROUND RODS TO ACHIEVE LESS THAN 5 OHMS RESISTANCE. FOR EACH GROUND ROD PROVIDE TEST WELL FLUSHED IN GRADE ENCLOSURE, BROOKS PRODUCTS AND CAST IRON COVER PLATE WITH WORDS "GROUND RODS" ON TOP. CONTRACTOR SHALL ARRANGE TO HAVE A GROUNDING TEST/INSPECTION PERFORMED IN THE PRESENCE OF THE SPD SUPPLIER, PSI REPRESENTATIVE (JOHN WEST). ALL GROUNDING CONDUCTORS INSTALLED UNDERGROUND SHALL BE BARE COPPER AND ALL CONNECTIONS TO THE GROUND RODS AND BUILDING STEEL SHALL BE CADWELDED. INSTALL GROUND CONDUCTORS 18" BELOW GRADE. GROUND RODS TEST WELLS SHALL BE INSTALLED IN NON-TRAFFIC AREAS.



DETAIL NO. 9 CONCRETE POLE DETAIL NOT TO SCALE

THESE DRAWINGS ARE FOR THE EXCLUSIVE USE OF GLIDDEN SPINA + PARTNERS, INC. AND MAY NOT BE DUPLICATED, REPRODUCED OR USED IN ANY MANNER WITHOUT THE EXPRESS WRITTEN CONSENT OF GLIDDEN SPINA + PARTNERS, INC. ALL RIGHTS RESERVED.

Revisions:


Project no: 15435  
Date: 09.09.16  
Drawn by: RB/SK/JJS  
Project Architect: BJ

PERMIT / BID SET: 09/07/16

**FAE CONSULTING**

700 WEST HILLSBORO BLVD. - BLDG. #1, SUITE 204  
DEERFIELD BEACH, FLORIDA 33441  
TEL: (561) 391-9292 FAX: (561) 391-9898  
CERTIFICATE OF AUTHORIZATION NO. 28107  
LIRELLA IARFATE, P.E. LICENSE #73122  
STEPHEN F. ROLLIN, P.E. LICENSE #36428  
DONALD H. AUSTIN, JR., PE LICENSE #60651  
JASON BARBER, P.E. LICENSE #73050  
E-MAIL: INFO@FAECONSULTING.COM  
DESIGNED BY: BJ/SK/JJS PM: BJ P/N 15434

**PRIOR TO SUBMITTING THE BID, THE CONTRACTOR SHALL FIELD VERIFY ALL EXISTING CONDITIONS AND INFORM THE ARCHITECT AND THE ENGINEER OF ANY DISCREPANCY BETWEEN THESE DOCUMENTS AND THE EXISTING CONDITIONS AND SHALL INCLUDE IN THE BID TO CORRECT THE SAME AS DIRECTED. THE ENGINEER AND THE ARCHITECT, ARE NOT RESPONSIBLE FOR ANY ADDITIONAL COSTS RESULTING FROM VERIFIABLE EXISTING CONDITIONS DISCOVERED AFTER CONTRACT HAS BEEN AWARDED. NO CHANGES SHALL BE MADE TO THESE PLANS WITHOUT PRIOR APPROVAL FROM THE ENGINEER OF RECORD. ALL CHANGES SHALL BE SUBMITTED FOR REVIEW PRIOR TO INSTALLATION. NOT FOR BID UNTIL PERMIT HAS BEEN ISSUED.**

**E5.2**

99.09.16 BID/PERMIT