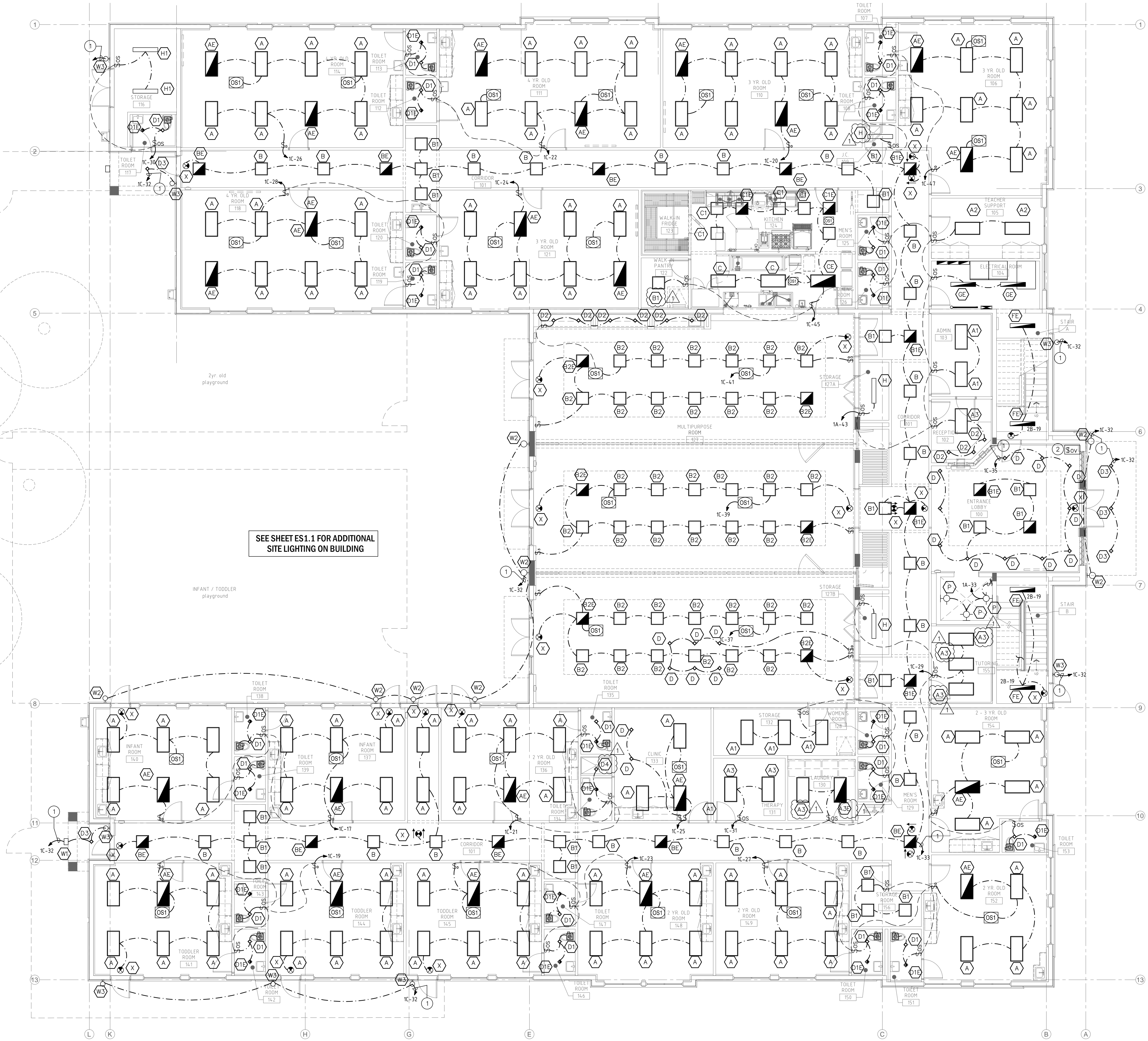


\\2016\Projects\Glidden Spina\15455\Opportunity_Early Learning_Center\MEP\15455_01.dwg, 10/13/2016, 2:12:22 PM, CT\mmpc, DWG, 15455_01.rvt



LIGHTING PLAN KEY NOTES

- 1 CIRCUIT CONTROLLED THROUGH AN ASTRONOMICAL TIME CLOCK, FOR COMPLIANCE WITH FBC FBC ENERGY CONSERVATION SECTION.
- 2 OVERRIDE SWITCH WITH PILOT LIGHT FOR CONTROL OF TIME CLOCK. COORDINATE EXACT LOCATION AND QUANTITY OF PUSH BUTTONS WITH OWNER AND ARCHITECT.

SEE SHEET ES.1 FOR ADDITIONAL SITE LIGHTING ON BUILDING

1 FIRST FLOOR LIGHTING PLAN
SCALE: 1/8" = 1'-0"

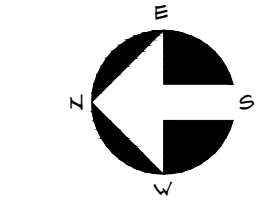
PRIOR TO SUBMITTING THE BID, THE CONTRACTOR SHALL FIELD VERIFY ALL EXISTING CONDITIONS AND INFORM THE ARCHITECT AND THE ENGINEER OF ANY DISCREPANCY BETWEEN THESE DOCUMENTS AND THE EXISTING CONDITIONS AND SHALL INCLUDE IN THE BID TO CORRECT THE SAME AS DIRECTED. THE ENGINEER AND THE ARCHITECT, ARE NOT RESPONSIBLE FOR ANY ADDITIONAL COSTS RESULTING FROM VERIFIABLE EXISTING CONDITIONS DISCOVERED AFTER CONTRACT HAS BEEN AWARDED. NO CHANGES SHALL BE MADE TO THESE PLANS WITHOUT PRIOR APPROVAL FROM THE ENGINEER OF RECORD. ALL CHANGES SHALL BE SUBMITTED FOR REVIEW PRIOR TO INSTALLATION. NOT FOR BID UNTIL PERMIT HAS BEEN ISSUED.

PERMIT / BID SET: 09/07/16

FAC CONSULTING

700 WEST HILLSBORO BLVD. - BLDG. #1, SUITE 204
DEERFIELD BEACH, FLORIDA 33441
TEL: (561) 391-9292 FAX: (561) 391-9898
CERTIFICATE OF AUTHORIZATION NO. 28107
LIRELLA IARFATE, P.E. LICENSE #73122
STEPHEN F. ROLLIN, P.E. LICENSE #36428
DONALD H. AUSTIN, JR., PE LICENSE #60551
JASON BARBER, P.E. LICENSE #73050
E-MAIL: INFO@FACONCONSULTING.COM
DESIGNED BY: BJ/SK/JS PM: BJ P/N 15434

FIRST FLOOR LIGHTING PLAN



E2.1

09.09.16 BID/PERMIT

New Building For:
OPPORTUNITY INC.
EARLY LEARNING CENTER
4171 Westgate Avenue
Palm Beach County, Florida

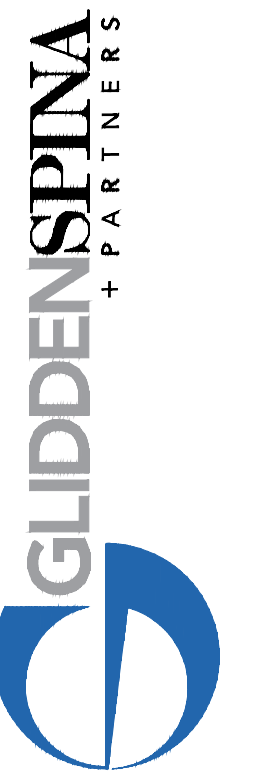
THESE DRAWINGS ARE FOR THE EXCLUSIVE USE OF GLIDDEN SPINA + PARTNERS, INC. AND MAY NOT BE COPIED, REPRODUCED OR USED IN ANY MANNER WITHOUT THE EXPRESS WRITTEN CONSENT OF GLIDDEN SPINA + PARTNERS, INC. ALL RIGHTS RESERVED.

Revisions:
10.13.16 ADDENDUM 008

Project no: 15435
Date: 09.09.16
Drawn by: RB/SK/JS
Project Architect: BJ

FAC CONSULTING

700 WEST HILLSBORO BLVD. - BLDG. #1, SUITE 204
DEERFIELD BEACH, FLORIDA 33441
TEL: (561) 391-9292 FAX: (561) 391-9898
CERTIFICATE OF AUTHORIZATION NO. 28107
LIRELLA IARFATE, P.E. LICENSE #73122
STEPHEN F. ROLLIN, P.E. LICENSE #36428
DONALD H. AUSTIN, JR., PE LICENSE #60551
JASON BARBER, P.E. LICENSE #73050
E-MAIL: INFO@FACONCONSULTING.COM
DESIGNED BY: BJ/SK/JS PM: BJ P/N 15434



GLIDDEN SPINA + PARTNERS
Architecture • Interior Design
Keith M. Spina # AH33419

207 SIXTH STREET
WEST PALM BEACH, FLORIDA 33401
PH: 561.684.6844 • gliddenspina.com
FL Lic. # AB000397