

EST. 1988
RICK GONZALEZ, A.I.A.
PRESIDENT AR-0014172

300 CLEMATIS STREET
WEST PALM BEACH
FLORIDA 33401
PH: (561) 659-2383
FAX: (561) 659-5546

www.regarchitects.com

CORPORATION NUMBER
AA-0002447

AMPHITHEATRE
at
COMMONS
PARK

11600 POINCIANA BLVD.
ROYAL PALM BEACH, FL 33411



REVISIONS	NO.
	▲
	▲
	▲
	▲

DATE 08-30-16

SCALE 1/8"=1'-0"

DRAWN MHA

CHECKED MHA/REG

REG No. 15048

© 2016

OWNERSHIP AND USE OF THESE DOCUMENTS & SPECIFICATIONS AS INSTRUMENTS OF SERVICE ARE AND SHALL REMAIN THE PROPERTY OF THE ARCHITECT WHETHER THE PROJECT THEY ARE MADE FOR IS EXECUTED OR NOT. THEY SHALL NOT BE USED BY THE OWNER OR OTHERS ON OTHER PROJECTS OR FOR ADDITIONS TO THIS PROJECT BY OTHERS, EXCEPT BY AGREEMENT IN WRITING AND WITH APPROPRIATE COMPENSATION TO THE ARCHITECT.

FLOOR PLAN

NOT FOR PERMIT

1A-1.01

WALL TYPES NOTES

- ALL WALLS ARE STANDARD 8" CMU BLOCK UNLESS OTHERWISE NOTED. SEE ELEVATIONS FOR EXTERIOR FINISHES. SEE FINISH SCHEDULE FOR INTERIOR FINISHES.
- PROVIDE THROUGH-PENETRATION FIRESTOP SYSTEM AND THROUGH PENETRATION FIRESTOP DEVICES, SEALANTS, AND RELATED PRODUCTS FOR FIRE-RATED FLOOR AND WALL PENETRATIONS (AND SEALING TOP OF RATED WALLS TO DECK OR BOTTOM OF EX. CONC. SLAB). THIS WORK ALSO INCLUDES FIRESTOPPING AT PENETRATIONS THROUGH FIRE RATED WALLS AND FLOORS. ALL RATED WALL PENETRATIONS SHALL MAINTAIN THE INTEGRITY OF THE WALL ASSEMBLY.
- PROVIDE CONSTRUCTION IN ACCORDANCE WITH THE UL DESIGN NUMBER INDICATED.
- ALL INTERIOR SIDES OF BLOCK WALLS SHALL BE SKIM COATED WITH STUCCO, READY TO RECEIVE PAINT FINISH.
- UNLESS OTHERWISE NOTED, PLAN DIMENSIONS ARE TAKEN FROM FACE OF CMU OR CONCRETE TO FACE OF FINISH, OR FACE OF FINISH TO FACE OF FINISH.
- DOORS NOT OTHERWISE DIMENSIONED SHALL BE 8" FROM FACE OF ADJACENT CMU OR CONCRETE WALL TO ROUGH DOOR OPENING AND 4" FROM FACE OF ADJACENT STUD WALL TO ROUGH DOOR OPENING.

FLOOR FINISH SCHEDULE

TAG	DESCRIPTION	REFERENCE	COLOR	MANUFACTURER
F-1	EPOXY W/ CHEM. RESIST. TOP COAT	TRAFFIC TUFF	GRAY	NEOGARD
F-2	CONCRETE	LIGHT BROOM FINISH		

WALL BASE FINISH SCHEDULE

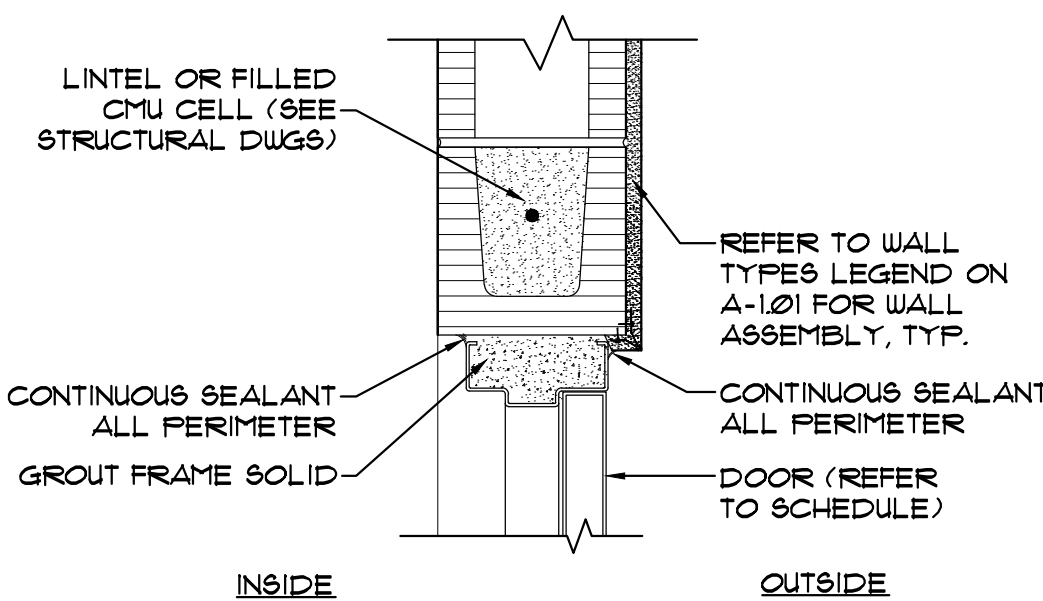
TAG	DESCRIPTION	REFERENCE	COLOR	MANUFACTURER
B-1	EPOXY W/ CHEM. RESIST. TOP COAT	TRAFFIC TUFF	GRAY	NEOGARD

WALL FINISH SCHEDULE

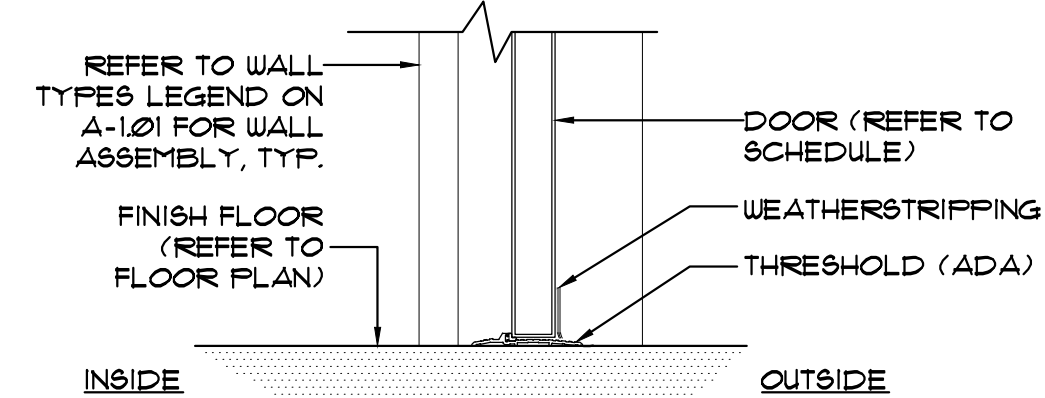
TAG	DESCRIPTION	REFERENCE	COLOR	MANUFACTURER
W-1	EPOXY PAINT	SWT008	ALABASTER	SHER WILLIAMS
W-2				

ACCESSORY SCHEDULE

TAG	DESCRIPTION	REFERENCE	MANUFACTURER
A-1	STAINLESS STEEL FRAME MIRROR	B-293-2436	BOBRICK
A-2	VANITY TOPS (SOLID SURFACE)	9032ML	WILSONART

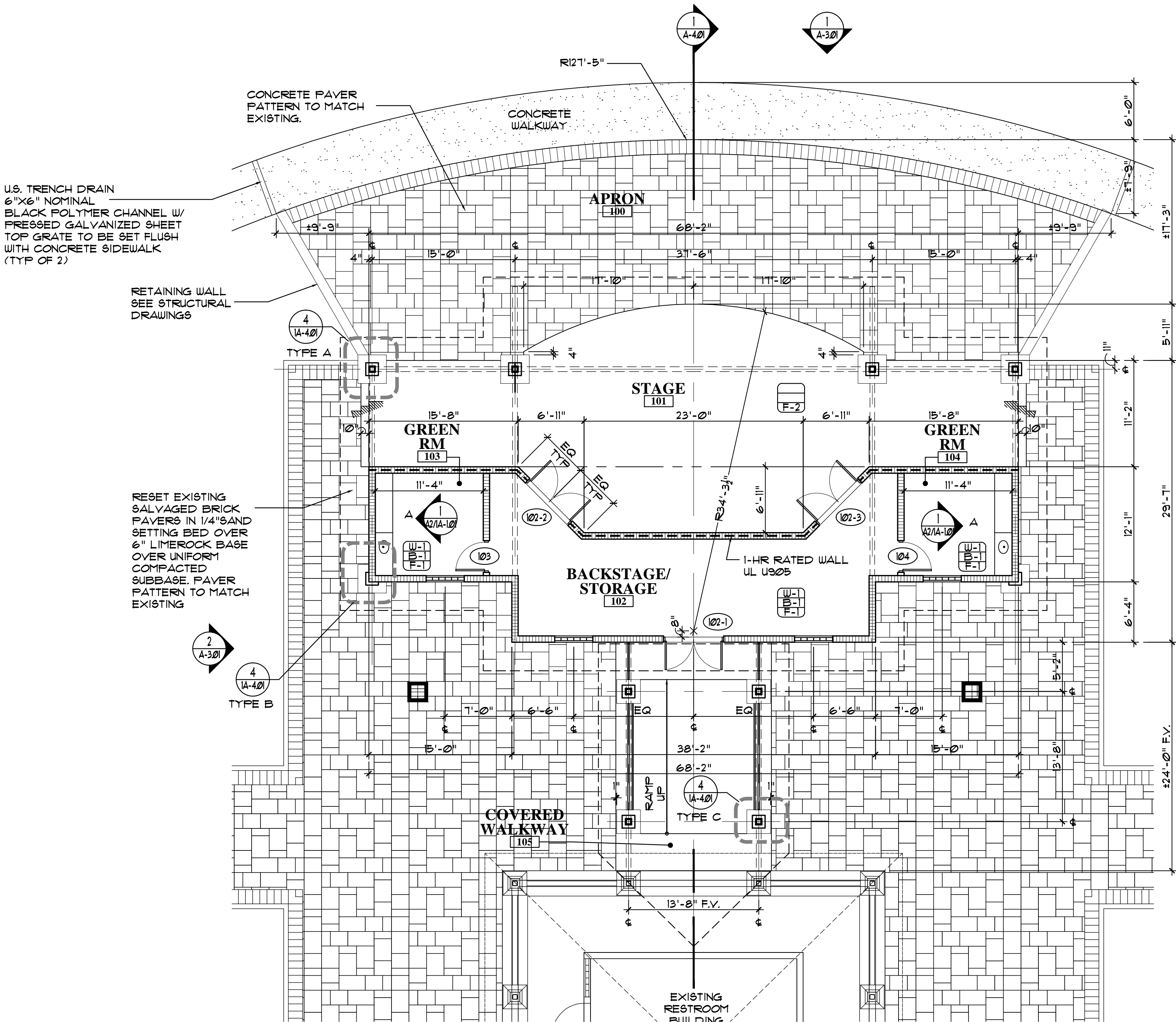
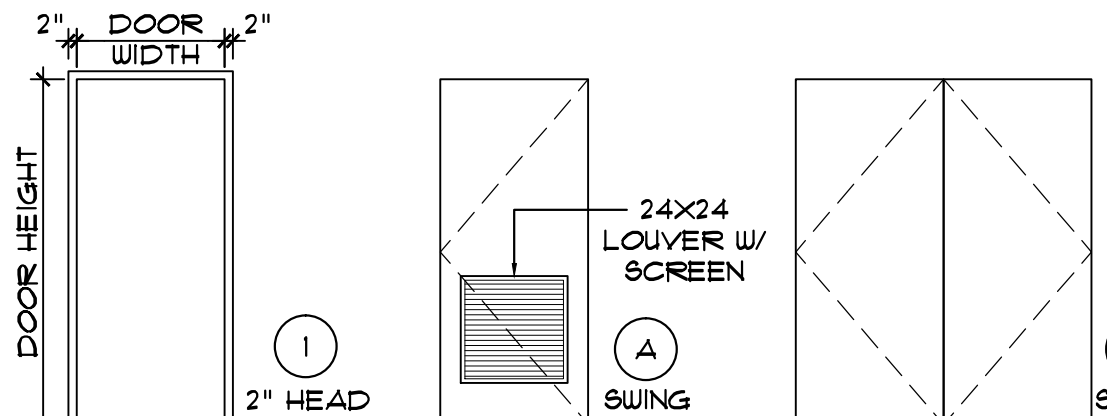


14 DOOR HEAD/JAMB
1 1/2" = 1'-0"

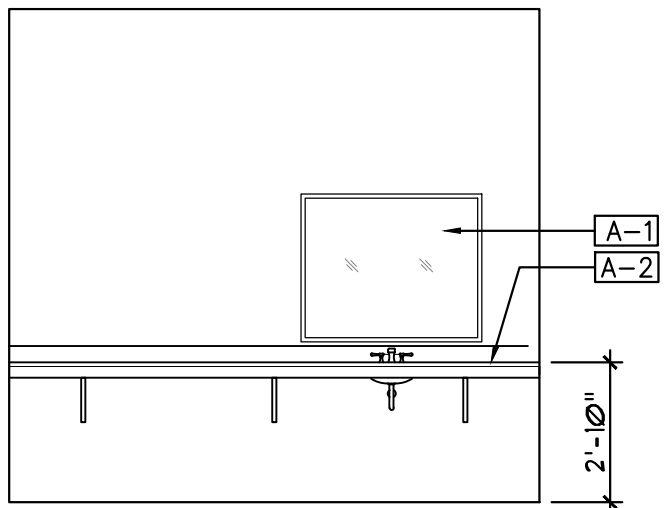
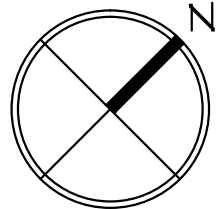


13 DOOR SILL
1 1/2" = 1'-0"

DOOR AND FRAME SCHEDULE									
DOOR HARDWARE:									
1. CYLINDER LOCK (HAGER 3100, US26D)									
2. HINGES (3 MIN) (HAGER BB181, US26D)									
3. DOOR CLOSER (LON 10710, ALUM)									
4. THRESHOLD (ADA) (HAGER 5205, MILL FIN)									
5. PUSH/PULL PLATES (HAGER 31E & 30S, US26D)									
6. KICK PLATE (HAGER 1920S, US32D)									
DOORS AND FRAMES TYPES		DOORS GENERAL NOTES							
MARK	LOCATION	DOOR TYPE	MAT.	SIZE (V.I.F.)	FRAME TYPE	MAT.	SILL	JAMB	HEAD
102-1	BACKSTAGE/ STORAGE	B	HM	72" x 84"	1	MTL	IS	1H	1H
102-2	BACKSTAGE/ STORAGE	B	HM	72" x 84"	1	MTL	IS	1H	1H
102-3	BACKSTAGE/ STORAGE	B	HM	72" x 84"	1	MTL	IS	1H	1H
103	GREEN ROOM	A	HM	36" x 84"	1	MTL	IS	1H	1H
104	GREEN ROOM	A	HM	36" x 84"	1	MTL	IS	1H	1H
NOTE: SEE SCHEDULE FOR DOOR WIDTH AND HEIGHT BASIS OF DESIGN - CECO DOORS HURRICANE RESISTANT 16 GAUGE, 1-3/4" THICK, A60, W/ FULLY WELDED FRAMES		1. PROVIDE IMPACT RESISTANT ASSEMBLIES AT ALL OPENINGS THAT COMPLY WITH STATE OF FLORIDA OR MIAMI-DADE COUNTY PRODUCT APPROVAL (AS REQUIRED BY LOCAL BLDG. DEPT.)							
		2. EXTERIOR OPENING ASSEMBLIES SHALL MEET THE MINIMUM WIND LOAD PRESSURE DESIGN SPECIFIED ON STRUCTURAL DWGS.							
		3. PROVIDE ANSI/BHMA STANDARDS, GRADE 1 (COMMERCIAL) HARDWARE ON ALL EXTERIOR DOORS. FINISH SHALL BE STAINLESS STEEL, SATIN FINISH. COORDINATE KEYING WITH OWNER.							
		4. PROVIDE SHOP DRAWINGS FOR OWNER & ARCHITECT APPROVAL PRIOR TO PURCHASE ORDER. WINDOWS, DOORS, HARDWARE & CONNECTIONS. PRODUCT APPROVALS SHALL BE INCLUDED IN SHOP DRAWING SUBMITTAL.							



1 FLOOR PLAN
1/8" = 1'-0"



2 TYPICAL GREEN ROOM COUNTER
1/4" = 1'-0"