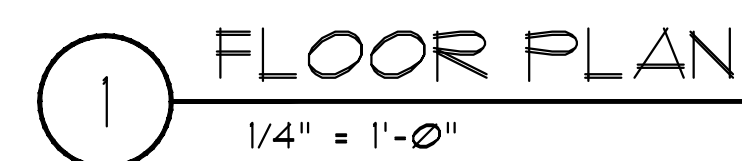
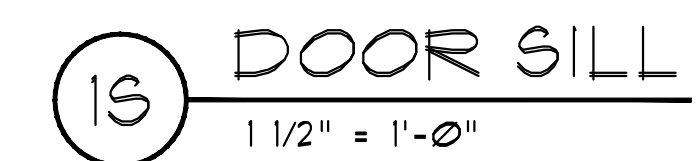
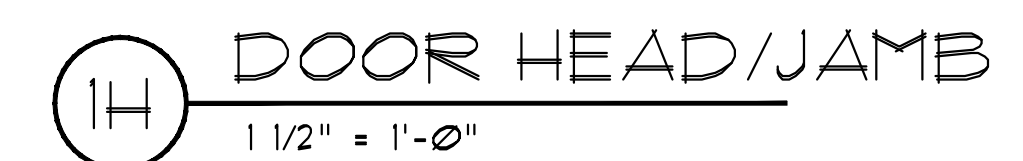


DOOR AND FRAME SCHEDULE											
MARK	LOCATION	DOOR			FRAME		DETAILS			FIRE RING.	REMARKS
		TYPE	MAT.	SIZE (V.I.F.)	TYPE	MAT.	SILL	JAMB	HEAD		
101	RESTROOM MEN	A	HM	36" x 84"	1	MTL	1S	1H	1H		
102	RESTROOM WOMEN	A	HM	36" x 84"	1	MTL	1S	1H	1H		

DOORS AND FRAMES TYPES					DOORS GENERAL NOTES				
<p>NOTE: SEE SCHEDULE FOR DOOR WIDTH AND HEIGHT BASIS OF DESIGN - CECO DOORS HURRICANE RESISTANT 16 GAUGE, 1-3/4" THICK, A60, W/ FULLY WELDED FRAMES</p>					<ol style="list-style-type: none"> <li>1. PROVIDE IMPACT RESISTANT ASSEMBLIES AT ALL OPENINGS THAT COMPLY WITH STATE OF FLORIDA OR MIAMI-DADE COUNTY PRODUCT APPROVAL (AS REQUIRED BY LOCAL BLDG. DEPT.)</li> <li>2. EXTERIOR OPENING ASSEMBLIES SHALL MEET THE MINIMUM WIND LOAD PRESSURE DESIGN SPECIFIED ON STRUCTURAL DUG'S.</li> <li>3. PROVIDE ANSI/BHMA STANDARDS, GRADE 1 (COMMERCIAL) HARDWARE ON ALL EXTERIOR DOORS. COORDINATE KEYING WITH OWNER</li> <li>4. PROVIDE SHOP DRAWINGS FOR OWNER &amp; ARCHITECT APPROVAL PRIOR TO PURCHASE ORDER. WINDOWS, DOORS, HARDWARE &amp; CONNECTIONS. PRODUCT APPROVALS SHALL BE INCLUDED IN SHOP DRAWING SUBMITTAL.</li> </ol>				



ACCESSORY SCHEDULE			
TAG	DESCRIPTION	REFERENCE	MANUFACTURER
A-1	36" GRAB BAR	B-6806-36	BOBRICK
A-2	42" GRAB BAR	B-6806-42	BOBRICK
A-3	TISSUE DISPENSER	B-2888	BOBRICK
A-4	VANITY TOPS (SOLID SURFACE)	9032ML	WILSONART
A-5	FEMININE NAFKIN DISPENSER	B-2706-25	BOBRICK
A-6	FEMININE NAFKIN DISPOSAL	B-270	BOBRICK
A-7	LIQUID SOAP DISPENSER	B-8226	BOBRICK
A-8	LIQUID SOAP DISPENSER (ADA)	B-2112	BOBRICK
A-9	MIRROR (VANITY WIDTH X 36"H)	9TAINLESS 9STEEL FRAME	
A-10	MIRROR (18"X30")	B-293-1830	BOBRICK
A-11	STALL DOOR	9OLID (HDPE)	AMFCO
A-12	HOOK	B-212	BOBRICK
A-13	BABY CHANGING STATION	KB200-00	KOALA KARE
A-14	HAND DRYER (RECESSED)	B-750	BOBRICK
A-15	HAND DRYER (SURFACE)	B-708	BOBRICK

2A-1.01