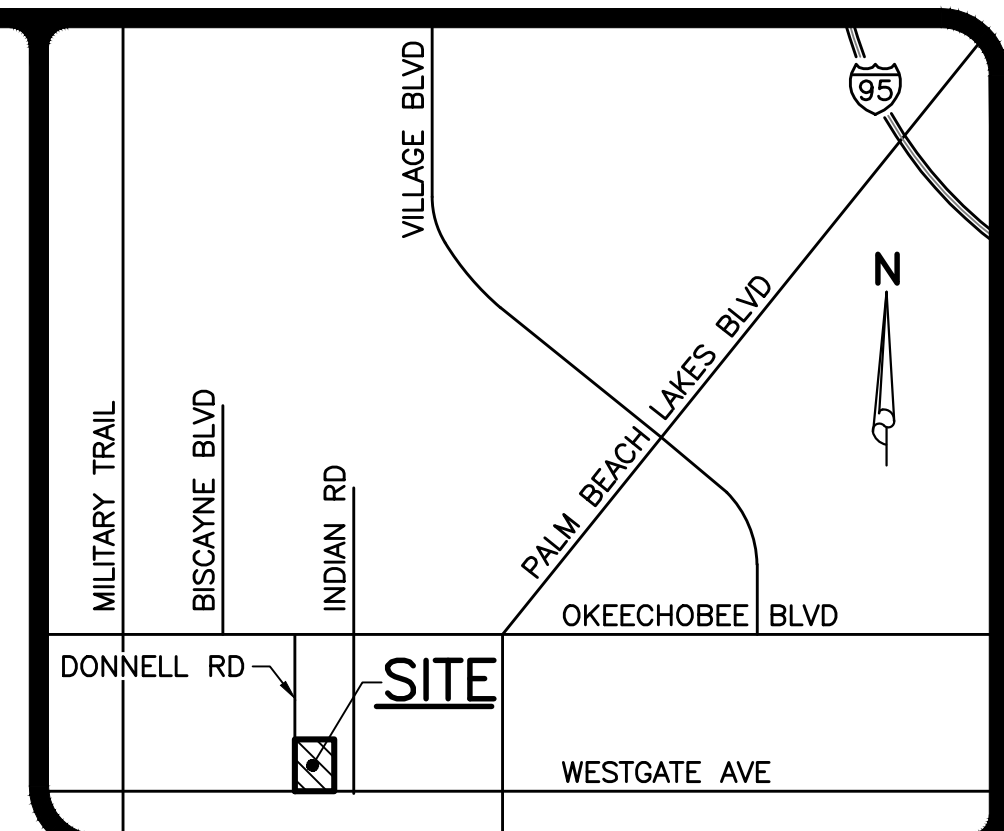
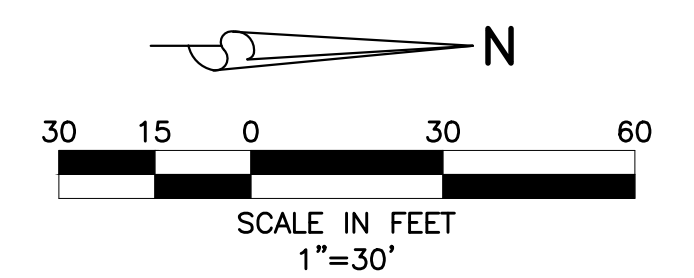


NOTES:

- 1.) CONTRACTOR SHALL COORDINATE RELOCATION/ REMOVAL OF ALL EXISTING OVERHEAD UTILITY LINES, POWER/UTILITY POLES AND GUY WIRES IN CONFLICT WITH THE PROPOSED IMPROVEMENTS WITH APPLICABLE UTILITY COMPANY PRIOR TO CONSTRUCTION AND NOTIFY ENGINEER OF ANY CONFLICTS.
- 2.) CONTRACTOR SHALL FIELD VERIFY LOCATION AND DEPTH OF ALL EXISTING UTILITIES ON AND ADJACENT TO THE PROPOSED SITE PRIOR TO CONSTRUCTION AND NOTIFY ENGINEER OF ANY CONFLICTS.
- 3.) CONTRACTOR TO FIELD VERIFY LOCATION AND DEPTH OF ALL EXISTING UTILITIES PRIOR TO CONSTRUCTION AND NOTIFY ENGINEER OF ANY CONFLICTS. IT SHALL BE THE CONTRACTORS RESPONSIBILITY TO COORDINATE ALL EXISTING UTILITY LOCATES, SUPPORT, RELOCATIONS AND NOTIFICATIONS REQUIRED WITH ALL APPLICABLE UTILITY SERVICE PROVIDERS.
- 4.) ALL STORM DRAINAGE STRUCTURES SHALL HAVE A MINIMUM 12" SUMP.
- 5.) ALL PIPE LENGTHS ARE MEASURED FROM CENTER OF STRUCTURES & ENDS OF HEADWALLS UNLESS OTHERWISE NOTED.
- 6.) CROSS SLOPE ON ALL SIDEWALKS & A.D.A. ACCESSIBLE ROUTES SHALL NOT EXCEED 2.0% AND THE LONGITUDINAL SLOPE SHALL NOT EXCEED 5.0%. RAMPS AS INDICATED SHALL NOT EXCEED 6' IN LENGTH & 12:1 SLOPE.
- 7.) CONTRACTOR SHALL BE RESPONSIBLE FOR RESTORING ALL OFF SITE AREAS DISTURBED DURING CONSTRUCTION TO EXISTING OR BETTER CONDITION.
- 8.) CONTRACTOR SHALL BE RESPONSIBLE FOR ALL N.P.D.E.S. REQUIREMENTS INCLUDING FILING OF N.O.I., N.O.T., WEEKLY & MONTHLY MONITORING REPORTS, ETC.
- 9.) ALL CONSTRUCTION AND RESTORATION WORK WITHIN P.B.C. R/W SHALL COMPLY WITH THE LATEST EDITION OF THE F.D.O.T. STANDARD INDEX AND THE F.D.O.T. STANDARD SPECIFICATIONS FOR ROAD AND BRIDGE CONSTRUCTION.
- 10.) ALL SIDEWALKS WITHIN P.B.C. R/W SHALL COMPLY WITH ALL APPLICABLE A.D.A. AND P.B.C. STANDARDS.
- 11.) PAVEMENT MARKINGS AND SIGNAGE SHALL BE IN ACCORDANCE WITH THE MANUAL OF UNIFORM TRAFFIC CONTROL DEVICES FOR STREET AND HIGHWAYS AND P.B.C. TYPICAL T-P-13.

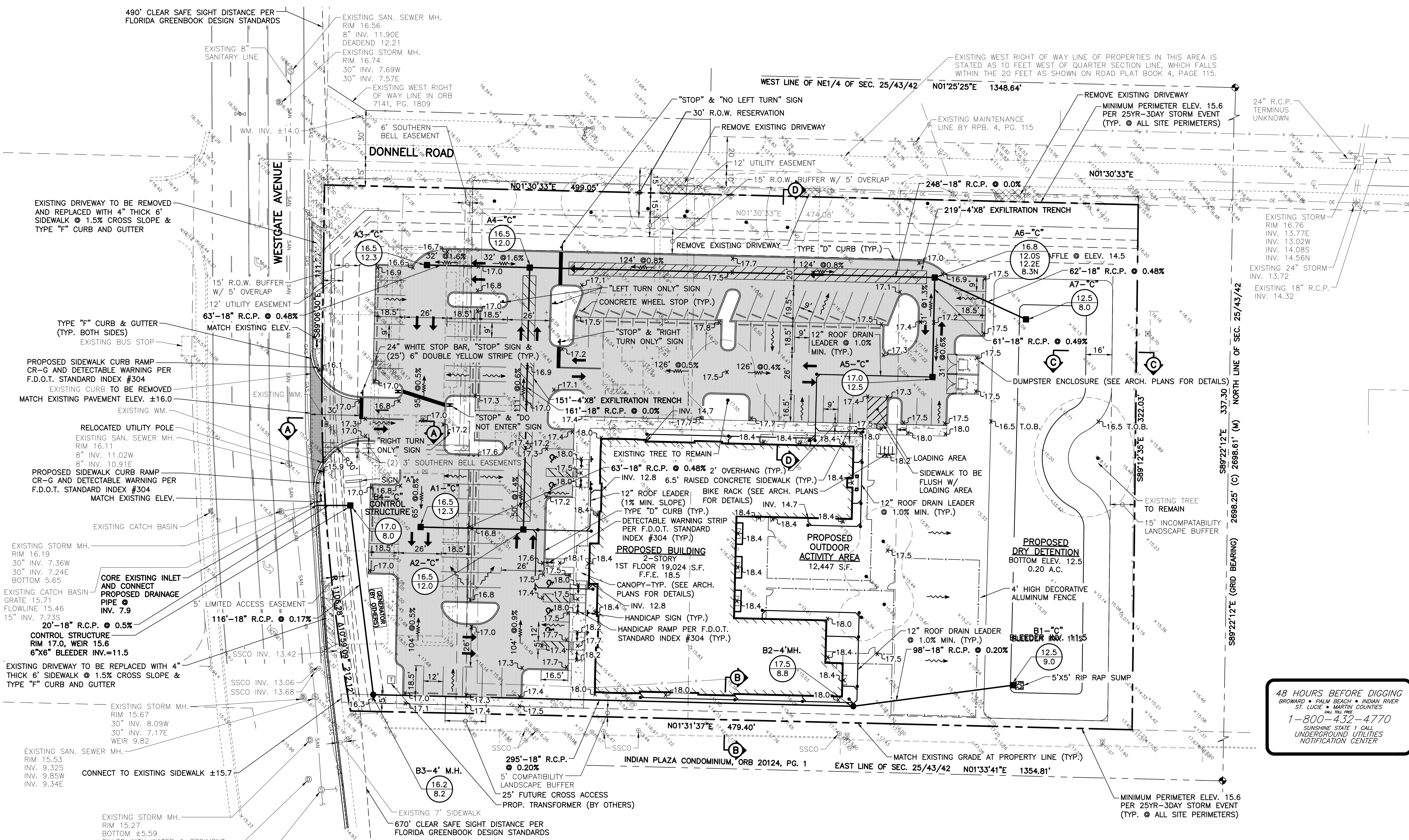


LOCATION MAP
NOT TO SCALE



LEGEND

- A3-C" INLET NUMBER AND TYPE
- 19.5 INLET TOP ELEVATION
- 16.0 INVERT ELEVATION
- PROPOSED STORM SEWER AND CATCH BASIN
- PROPOSED STORM SEWER AND MANHOLE
- DIRECTION OF FLOW
- DIRECTION OF SWALE
- PROPOSED GRADE ELEVATION
- EXISTING GRADE ELEVATION
- PROPOSED PAVEMENT (ASPHALT OR CONCRETE, SEE DETAILS FOR SPEC.)
- CONCRETE
- DETECTABLE WARNING SURFACE
- SAWCUT, REMOVE, & REPLACE EXISTING PAVEMENT, CONCRETE, CURB, ETC.
- SAWCUT & REMOVE EXISTING PAVEMENT, CONCRETE, CURB, ETC.
- PROPOSED EXFILTRATION TRENCH W/ 6" P.V.C. VENT
- PROPOSED DIRECTIONAL ARROW
- PROPOSED BIKE RACK (SEE SITE PLAN FOR DETAILS)
- 24" WHITE STOP BAR, "STOP" SIGN & 25"-6" DOUBLE YELLOW
- EXISTING OVERHEAD POWER LINE & POWER POLE
- EXISTING STORM DRAINAGE PIPE
- EXISTING WATER MAIN
- EXISTING SEWER MAIN
- EXISTING FORCE MAIN



48 HOURS BEFORE DIGGING
BROWARD • PALM BEACH • INDIAN RIVER
ST. LUCIE • MARTIN COUNTIES
CALL TOLL FREE
1-800-432-4770
SUNSHINE STATE 1 CALL
UNDERGROUND UTILITIES
NOTIFICATION CENTER

9/21/2016
BID SET

- 4.) REVISED PER P.B.C. COMMENTS, 09-20-16 R.W.
- 3.) RELOCATED UTILITY POLE SHOWN 09-14-16 T.M.
- 2.) REVISED PER P.B.C. COMMENTS 08-31-16 T.M.
- 1.) REVISED PER COMMENTS 08-03-16 T.M.



OPPORTUNITY INC. EARLY LEARNING CENTER
SECTION 25, TOWNSHIP 43S., RANGE 42E.
PALM BEACH COUNTY, FLORIDA
PAVING AND DRAINAGE PLAN

REVISIONS

DESIGN	DRAWN	CHECKED	APPROVED	DATE
A.G.	T.M.			

JOB NO.	DRAWING NO.	SHEET	OF
14-091	14091S03_PD	3	17