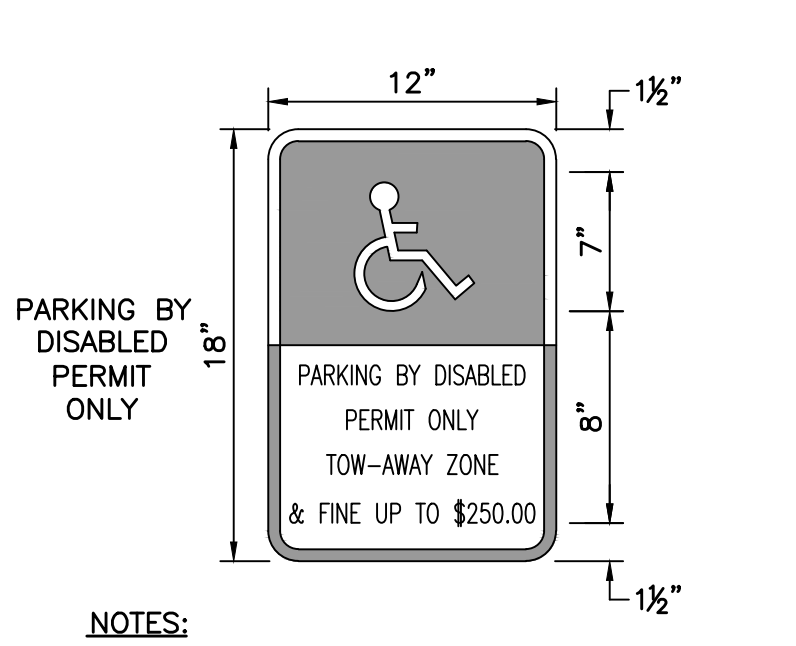
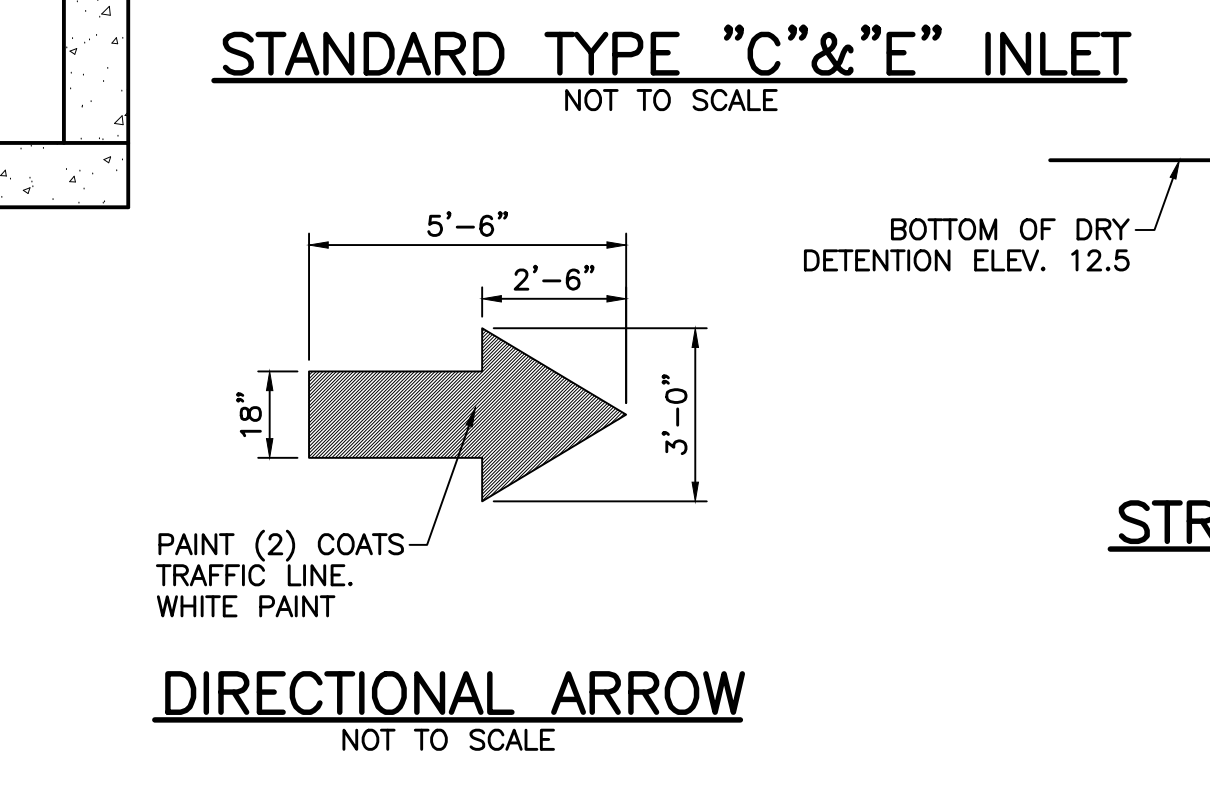
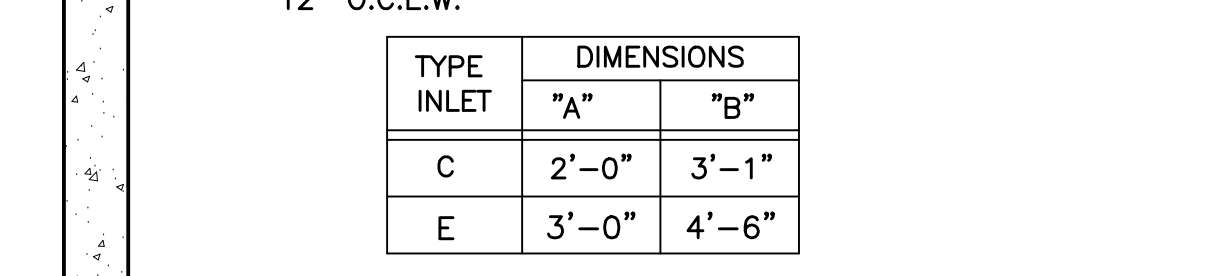
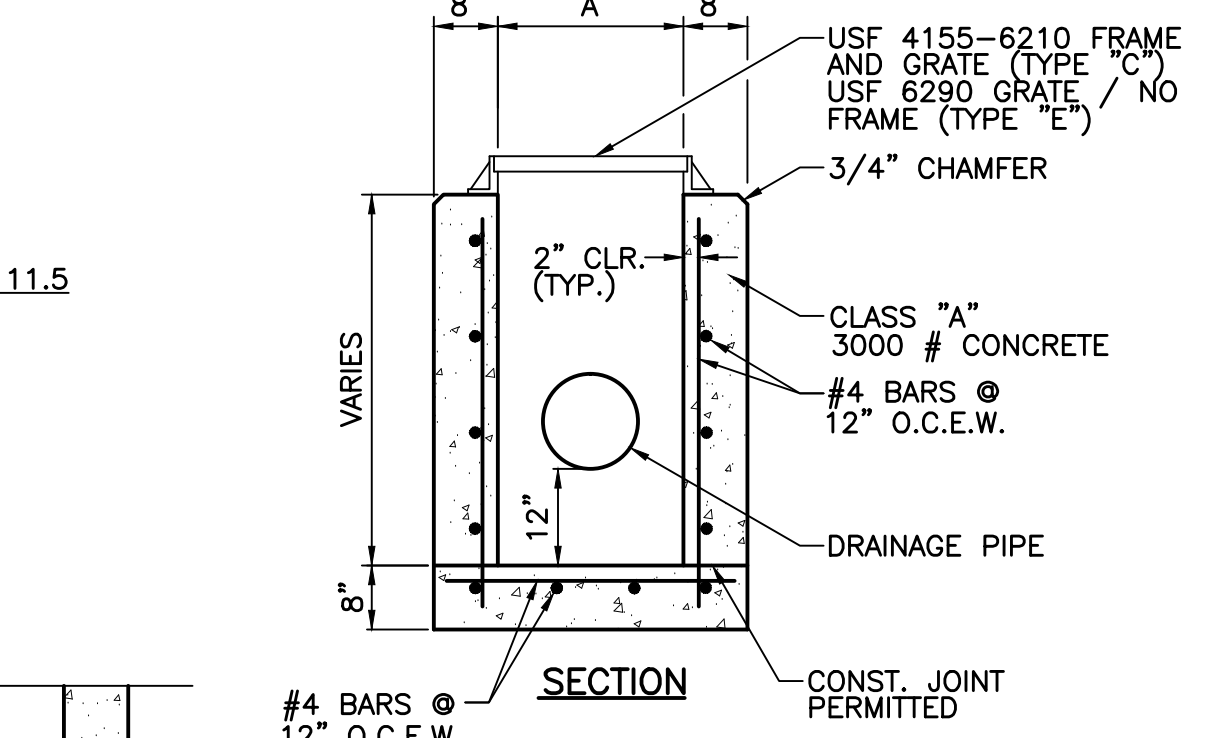
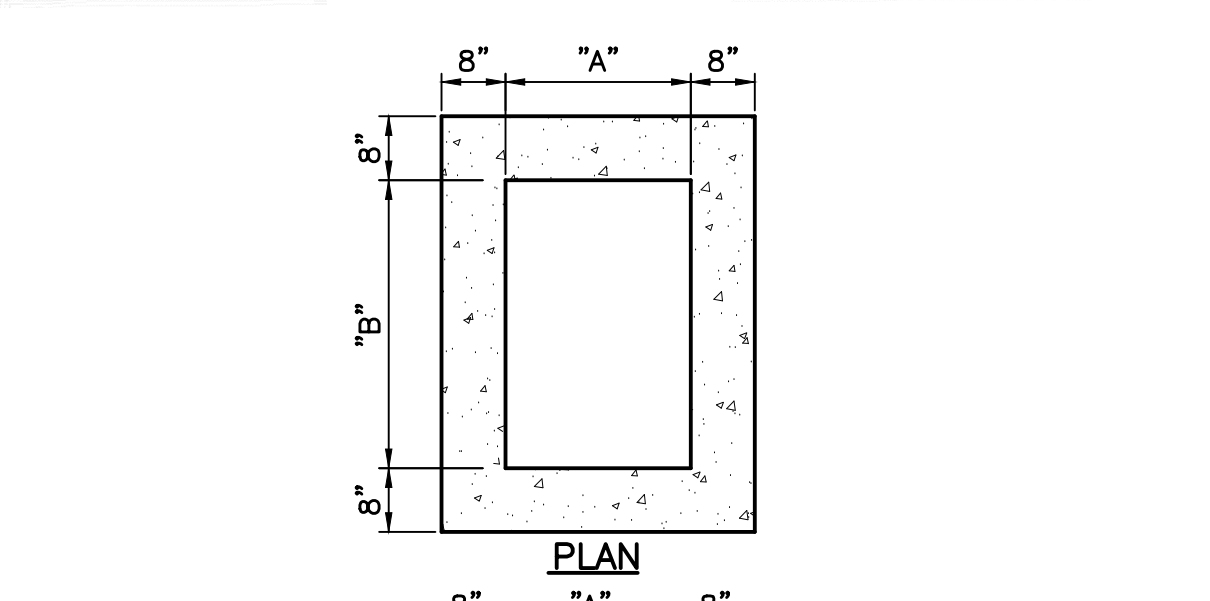
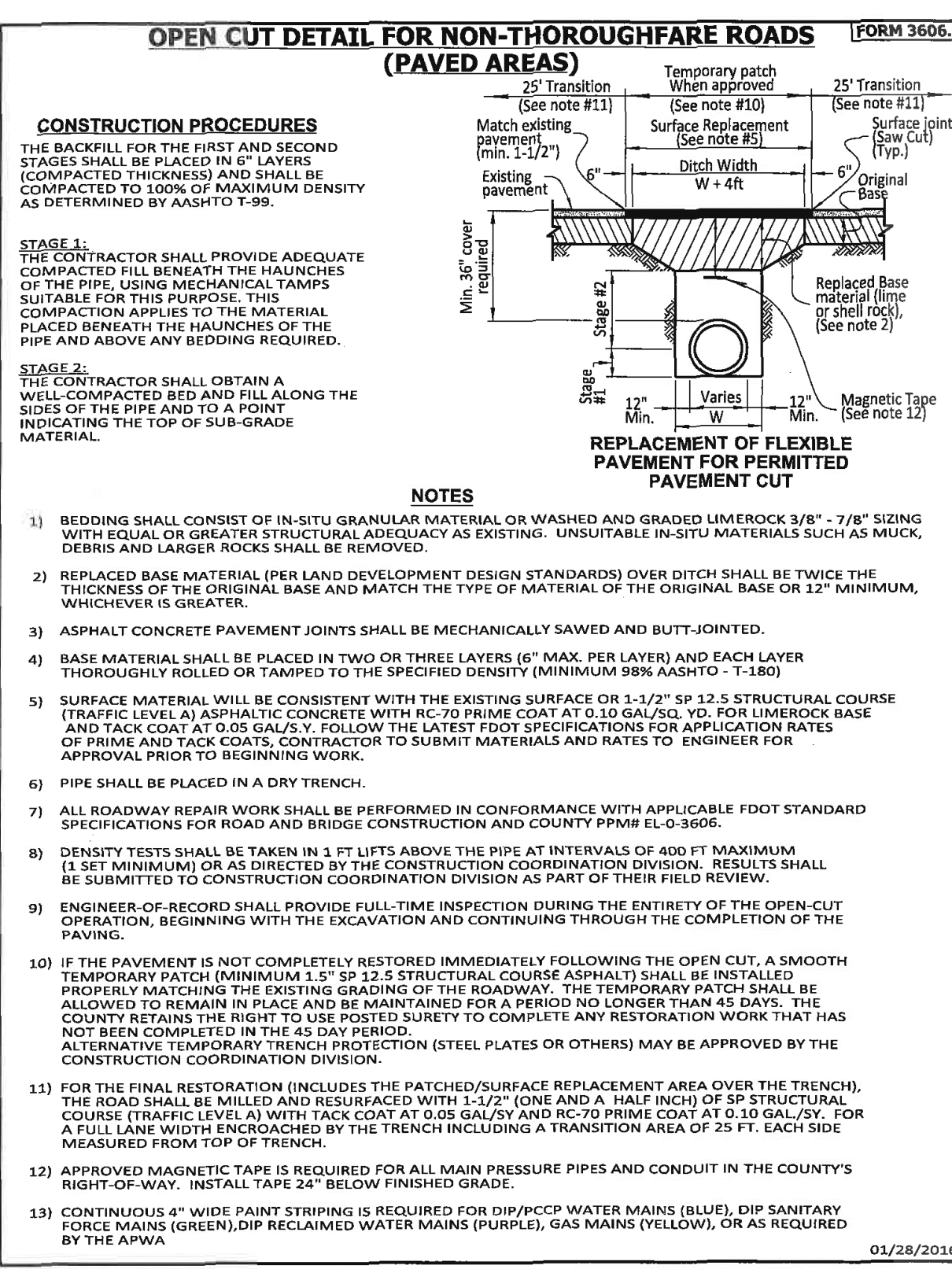
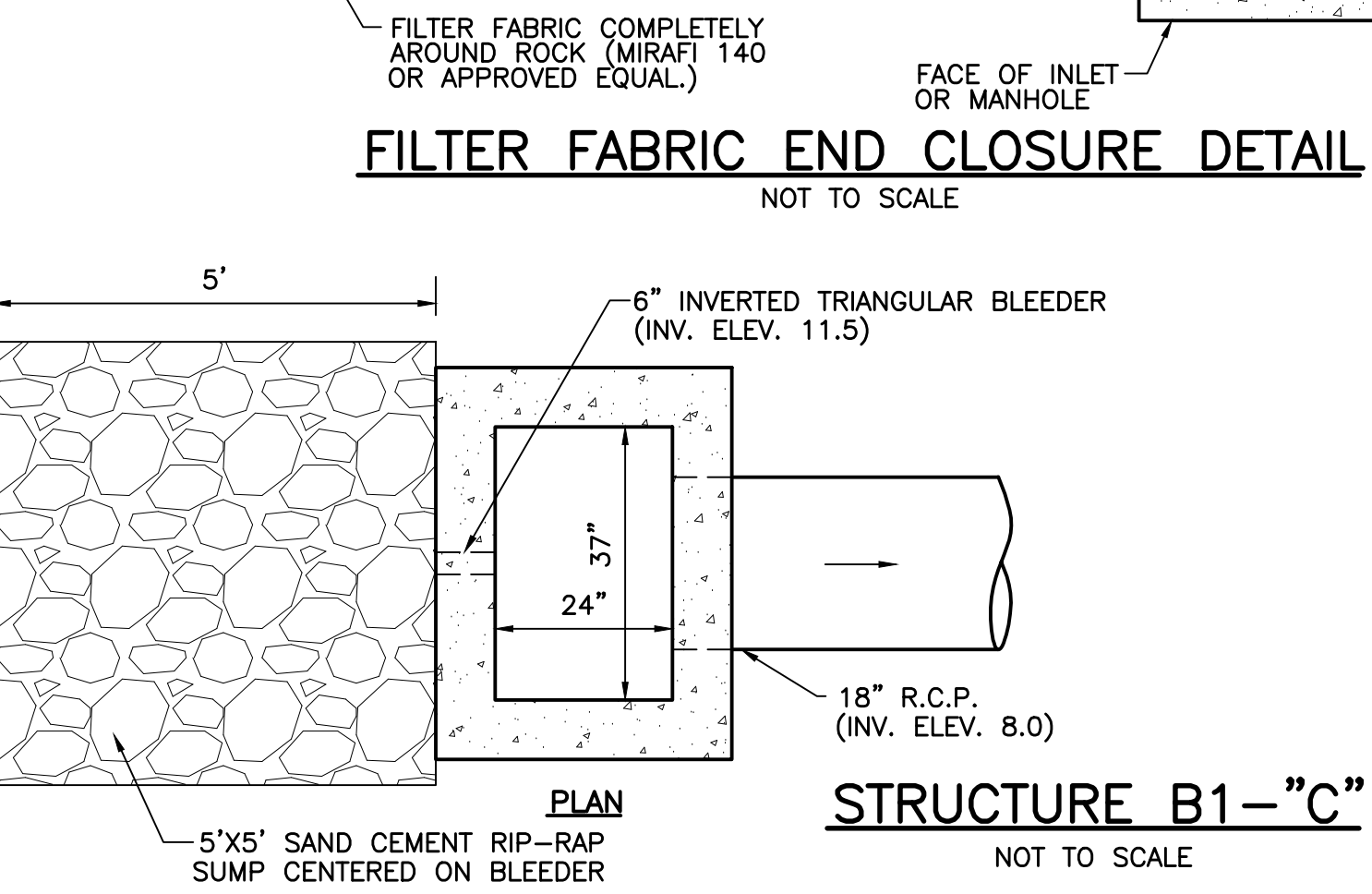
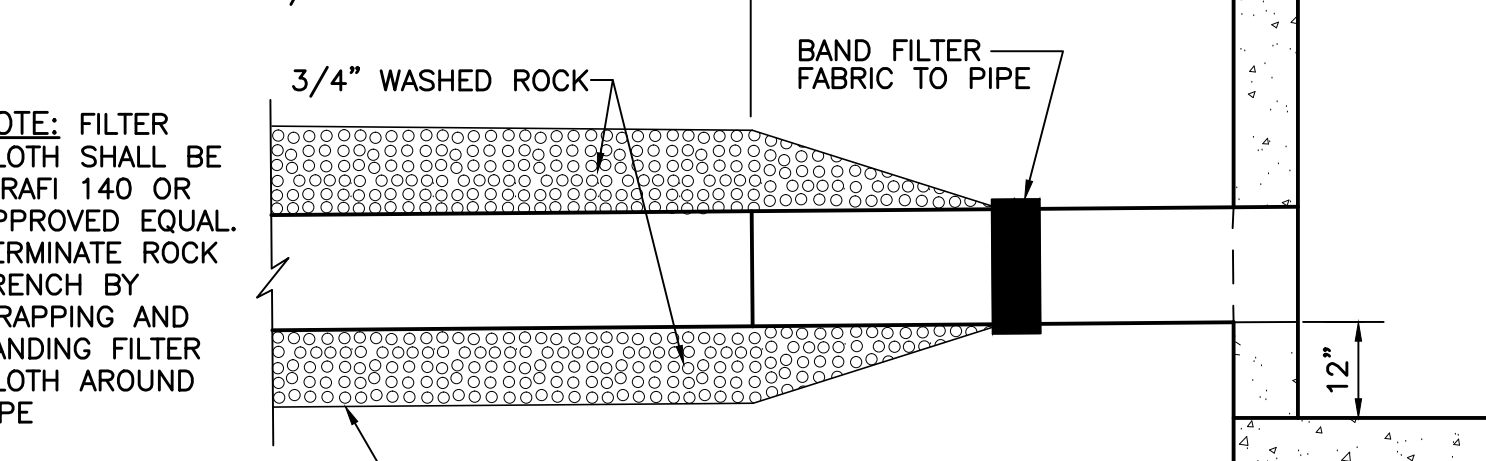
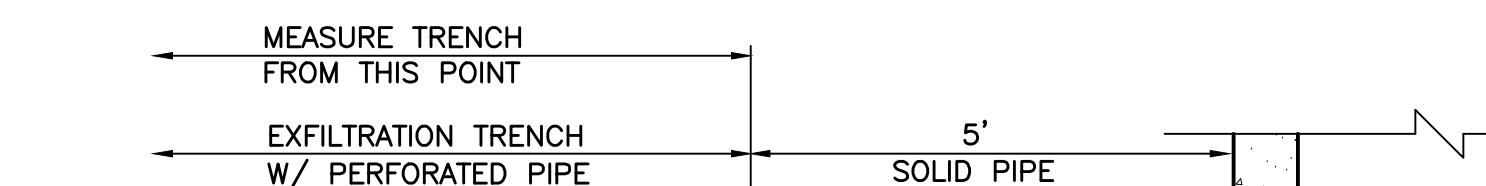
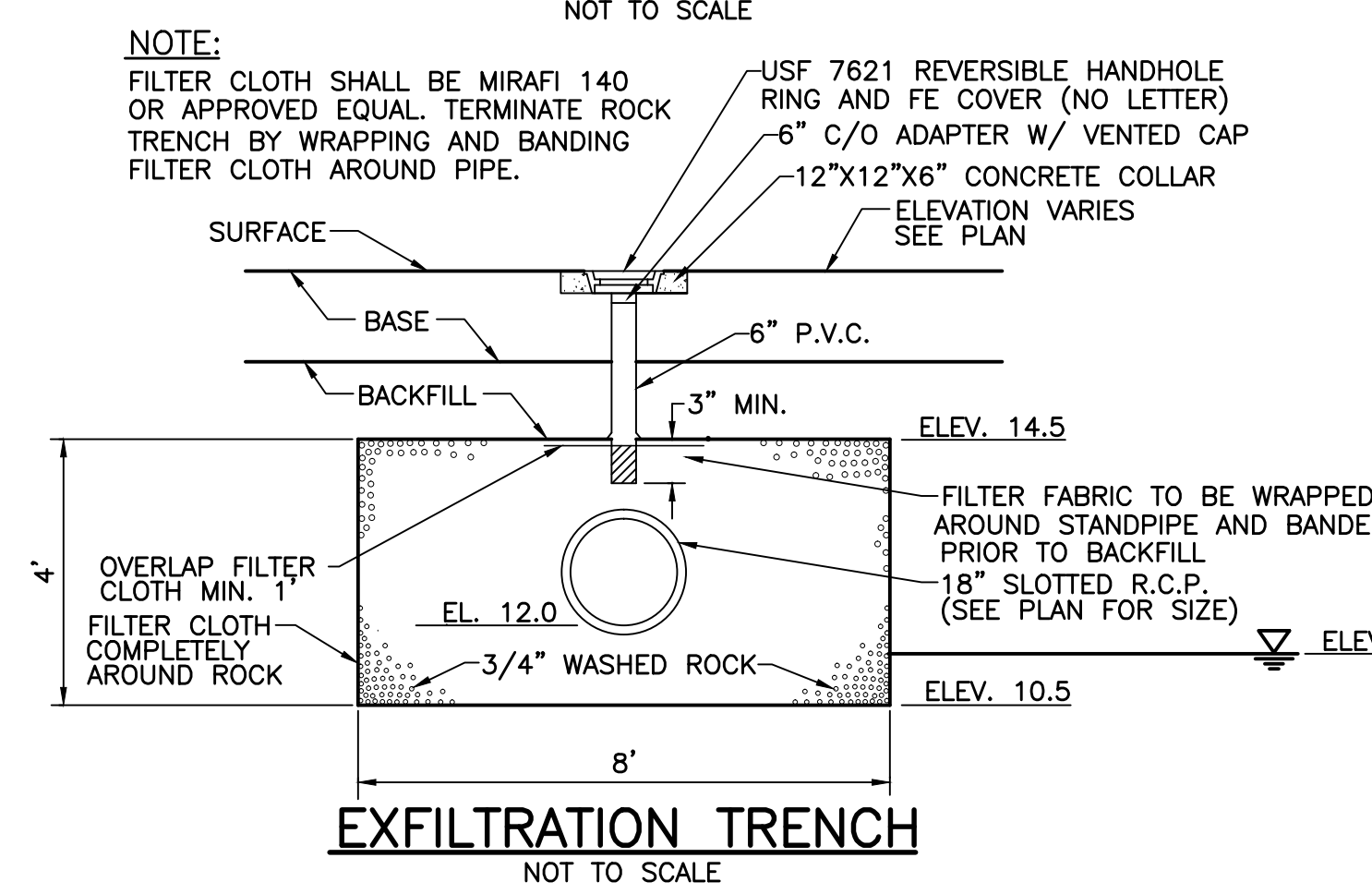


- NOTES:**
- BEDDING SHALL CONSIST OF IN-SITU GRANULAR MATERIAL OR WASHED AND GRADED LIMEROCK 3/8" - 7/8" SIZING WITH EQUAL OR GREATER STRUCTURAL ADEQUACY AS EXISTING. UNSUITABLE IN-SITU MATERIALS SUCH AS MUCK, DEBRIS AND LARGER ROCKS SHALL BE REMOVED.
 - THE PIPE SHALL BE FULLY SUPPORTED FOR ITS ENTIRE LENGTH WITH APPROPRIATE COMPACTION UNDER THE PIPE HAUNCHES.
 - THE PIPE SHALL BE PLACED IN A DRY TRENCH.
 - BACKFILL SHALL BE FREE OF UNSUITABLE MATERIAL SUCH AS LARGE ROCK, MUCK AND DEBRIS.
 - DENSITY TESTS ARE TAKEN IN 1 FOOT LIFTS ABOVE THE PIPE AT INTERVALS OF 400' MAXIMUM, (MINIMUM 1 SET) OR AS DIRECTED BY THE CONSTRUCTION COORDINATION DIVISION. RESULTS SHALL BE SUBMITTED TO CONSTRUCTION COORDINATION AS PART OF THEIR FIELD REVIEW.
 - THE PERMITTEE/DEVELOPER/CONTRACTOR SHALL BE RESPONSIBLE TO COMPLY WITH ALL TRENCH SAFETY LAWS AND REGULATIONS.
 - SEE SEPARATE DETAIL FOR PAVED AREAS (OPEN CUT FOR THOROUGHFARE AND NON-THOROUGHFARE ROADS).
 - THE AFFECTED AREA SHALL BE RESTORED TO EQUAL OR BETTER CONDITION OR AS SPECIFIED IN PERMIT/CONTRACT DOCUMENTS.
 - APPROVED MAGNETIC TAPE IS REQUIRED FOR ALL MAIN PRESSURE PIPES AND CONDUIT IN THE COUNTY'S RIGHT-OF-WAY. INSTALL TAPE 24" BELOW FINISHED GRADE.
 - ROOT BARRIER IS REQUIRED FOR APPROVED PIPE INSTALLATION CLOSER THAN 10 FEET FROM AN EXISTING TREE.
 - CONTINUOUS 4" WIDE PAINT STRIPING IS REQUIRED FOR DIP/PCCP WATER MAINS (BLUE), DIP SANITARY FORCE MAINS (GREEN), DIP RECLAIMED WATER MAINS (PURPLE), GAS MAINS (YELLOW), OR AS REQUIRED BY THE APWA.
 - PERMANENT ABOVE GROUND UTILITY MARKER SHALL BE INSTALLED IF REQUIRED BY PROPERTY OWNER GRANTING THE PIPE INSTALLATION PERMIT.

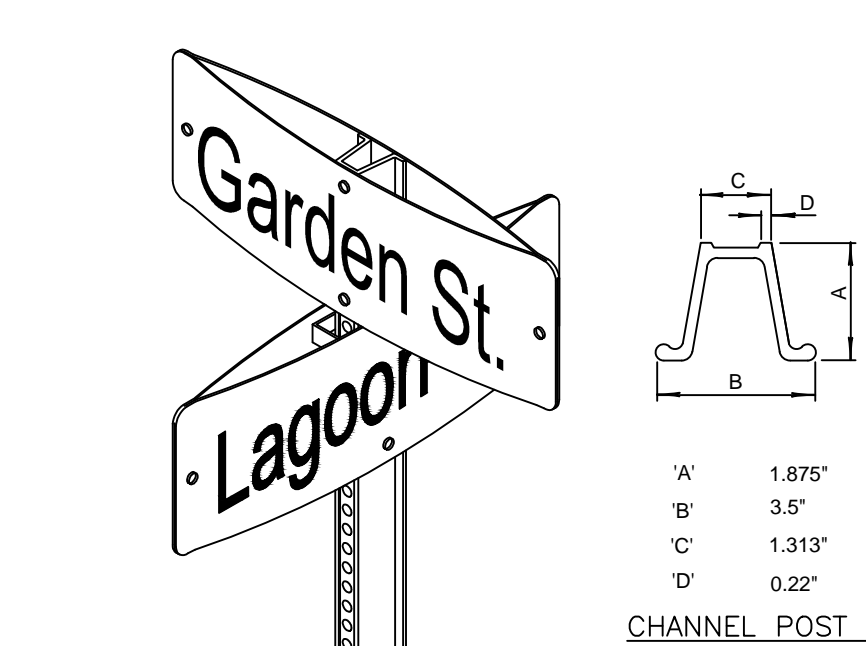
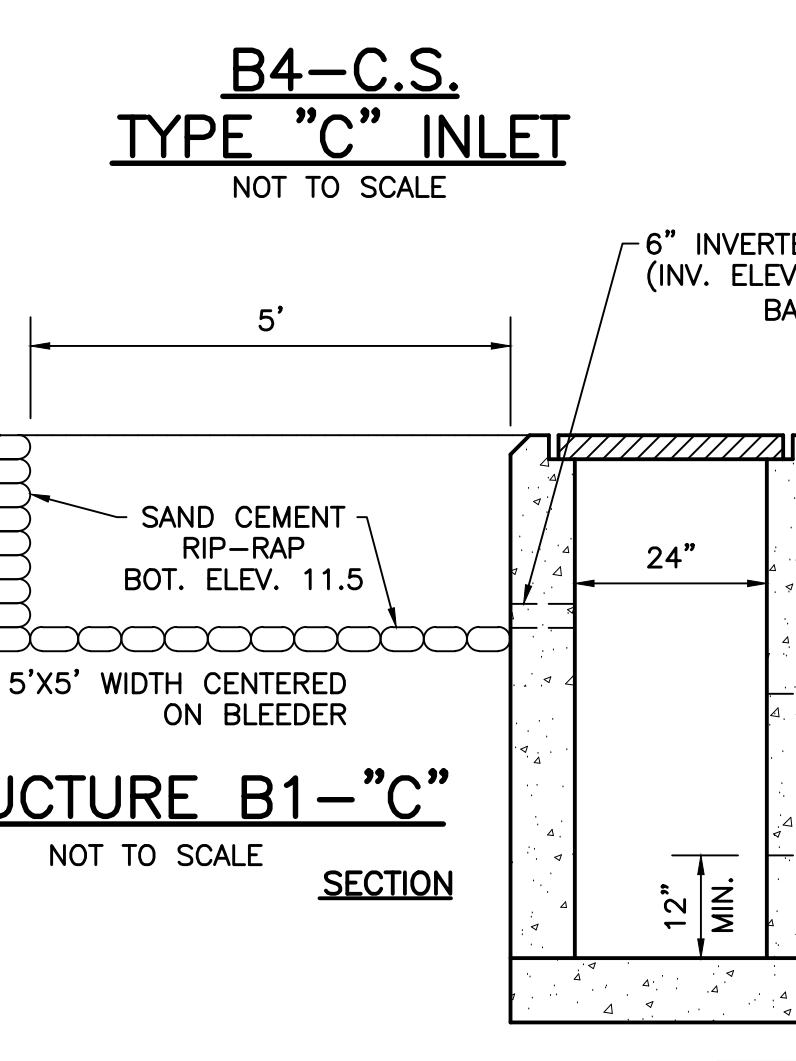
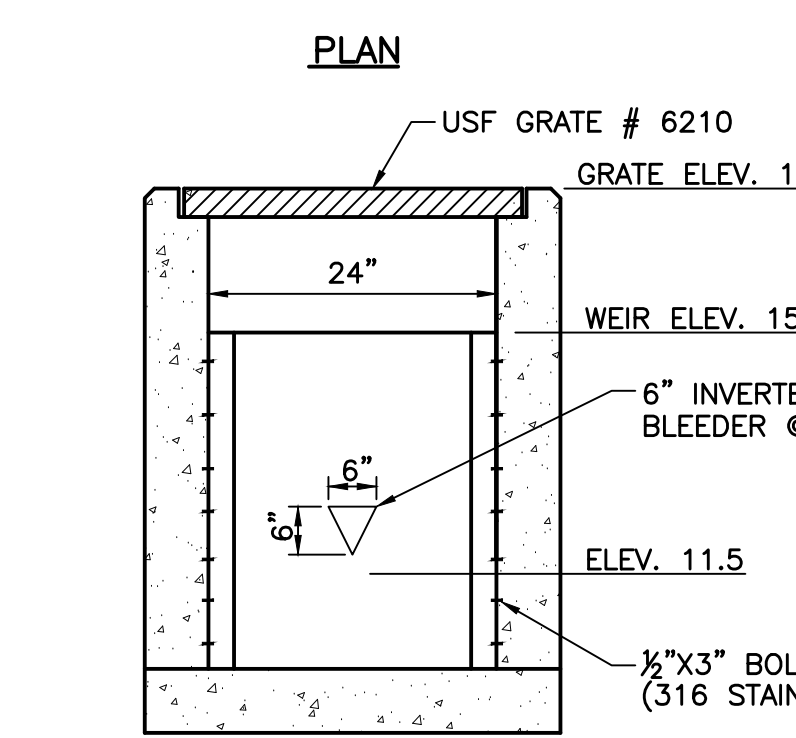
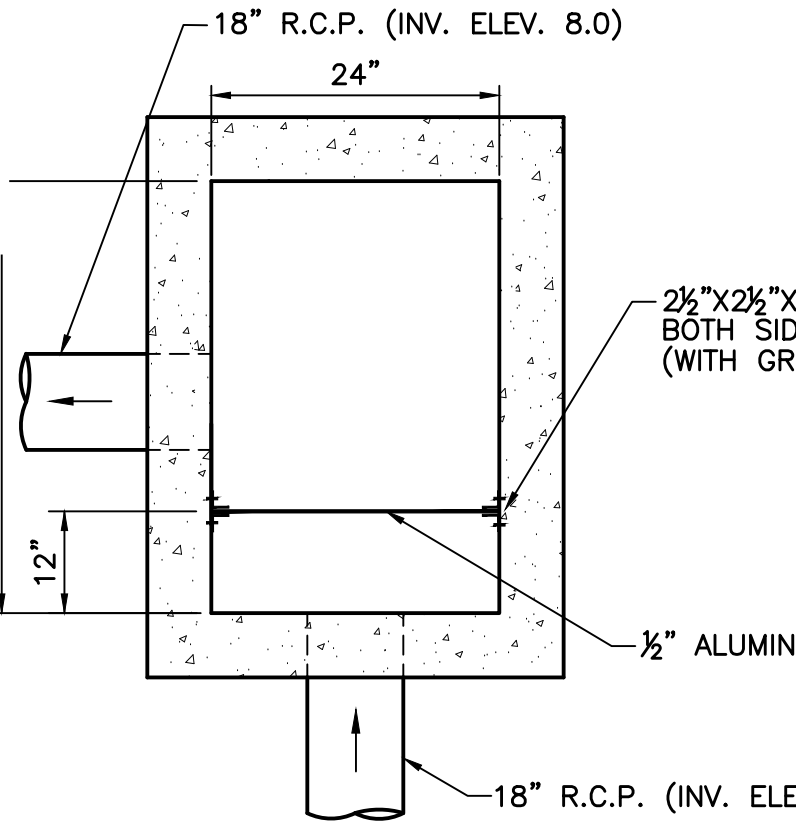
TYPICAL TRENCH DETAIL WITH ROOT BARRIER INSTALLATION DETAIL (NON-PAVED AREAS)
NOT TO SCALE



- NOTES:**
- ALL LETTERS ARE 1" SERIES 'C'.
 - TOP PORTION TO BE REFLECTORIZED BLUE BACKGROUND WITH WHITE REFLECTORIZED LEGEND AND BORDER.
 - BOTTOM PORTION TO BE REFLECTORIZED WHITE BACKGROUND WITH BLACK OPAQUE LEGEND AND BORDER.

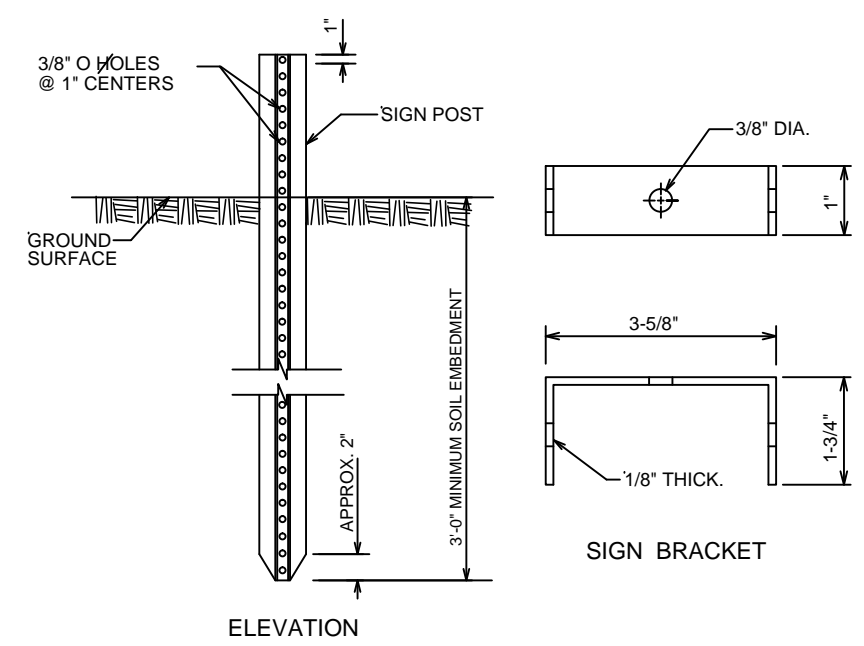
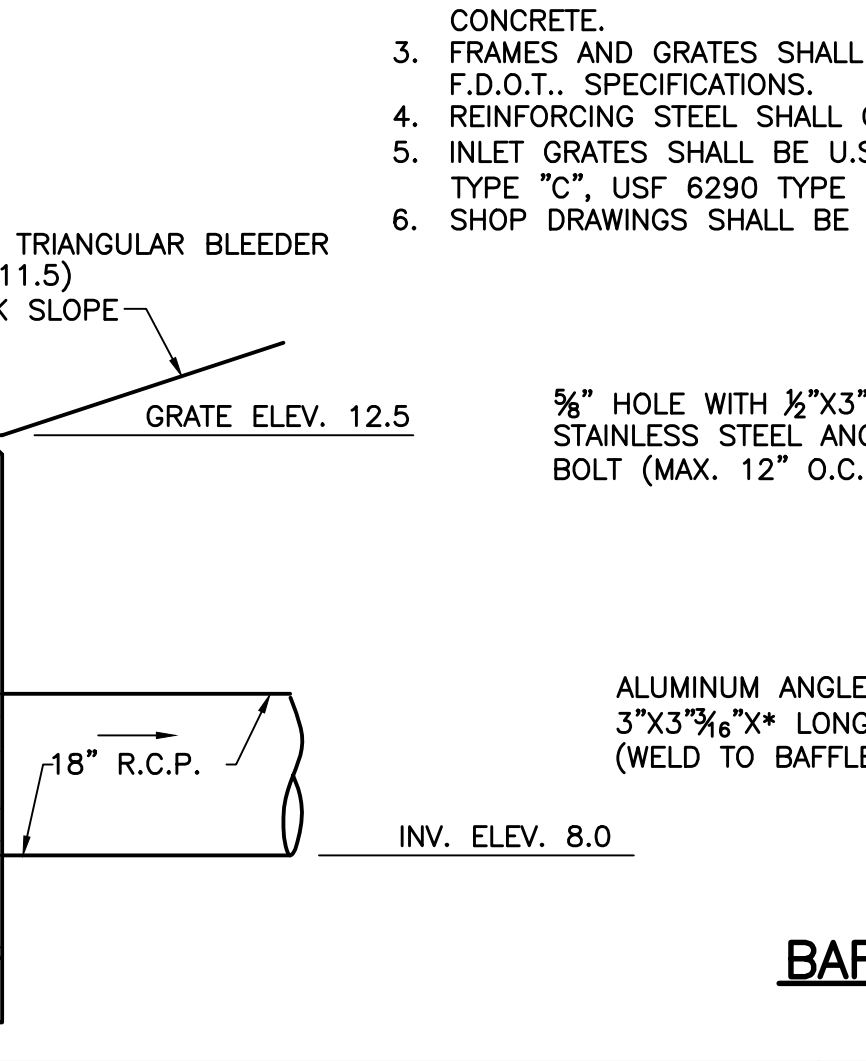
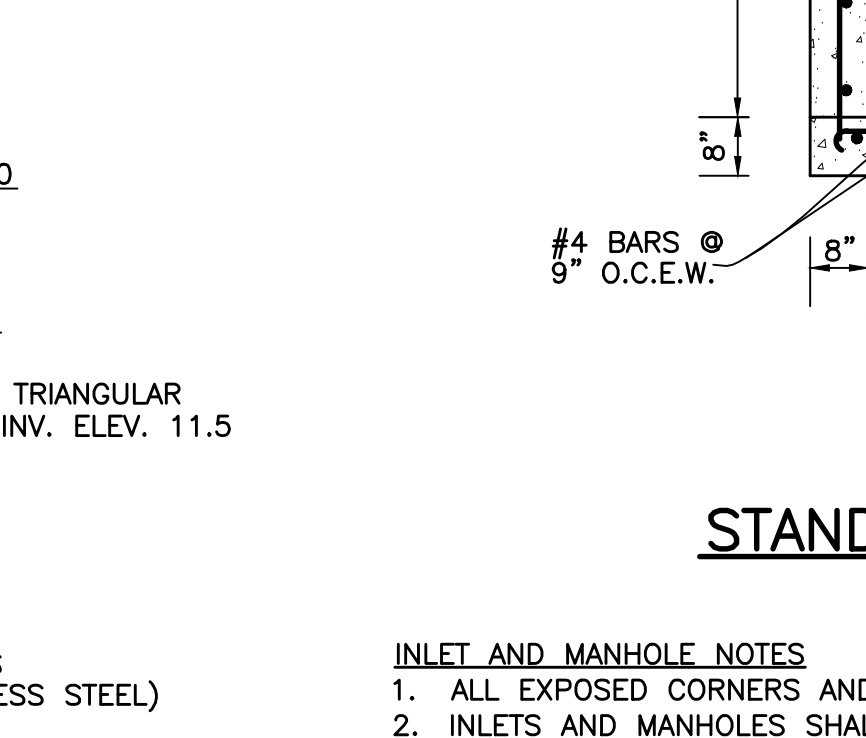
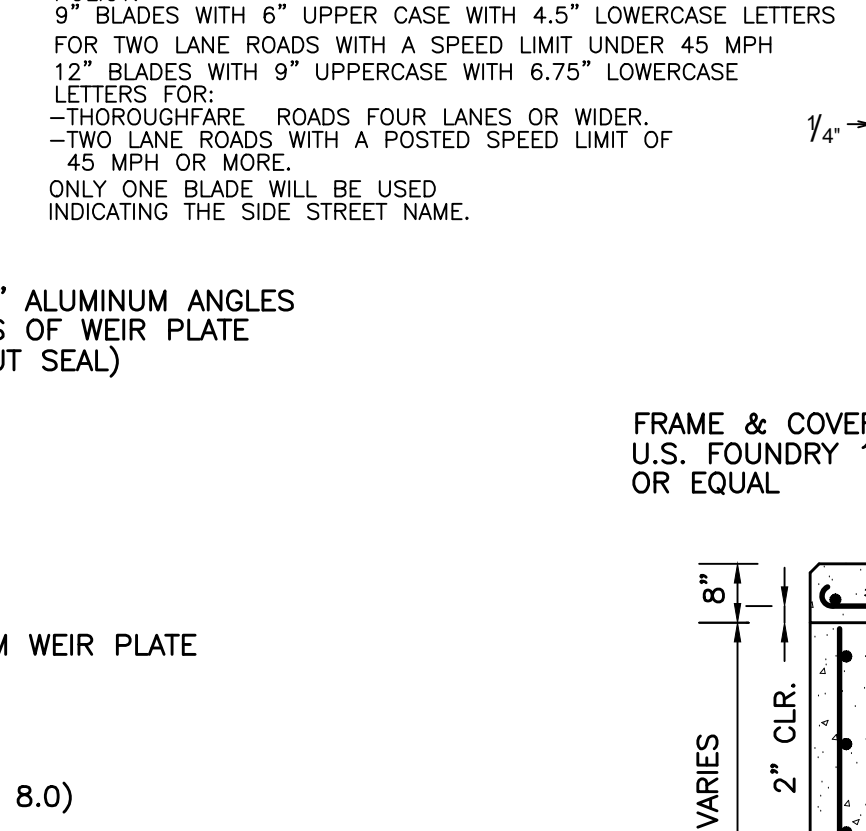
HANDI-CAP SIGN DETAIL
NOT TO SCALE

- NOTES:**
- SIGNAGE AND STRIPING TO BE CONSTRUCTED IN ACCORDANCE WITH PALM BEACH COUNTY ORDINANCE NO. 85-42

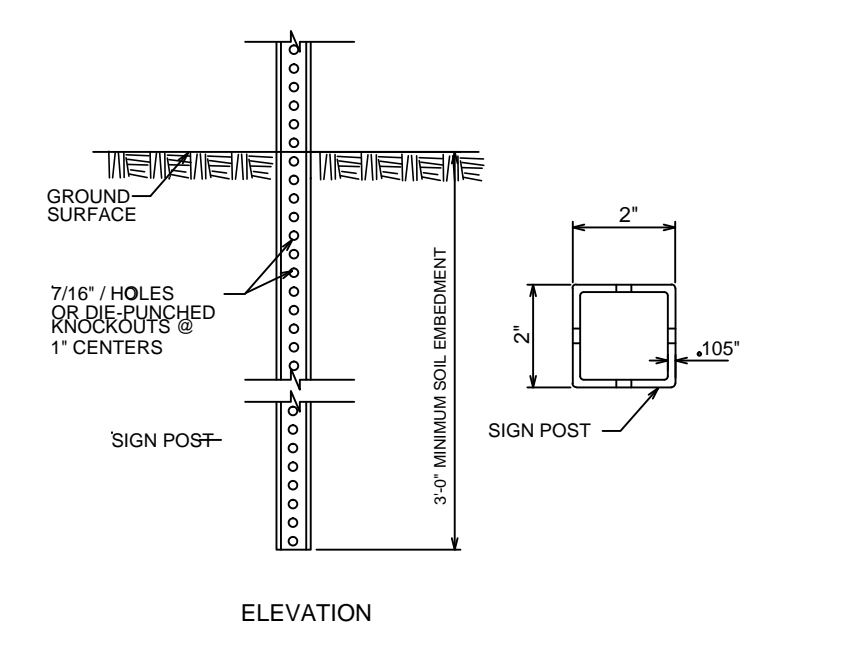
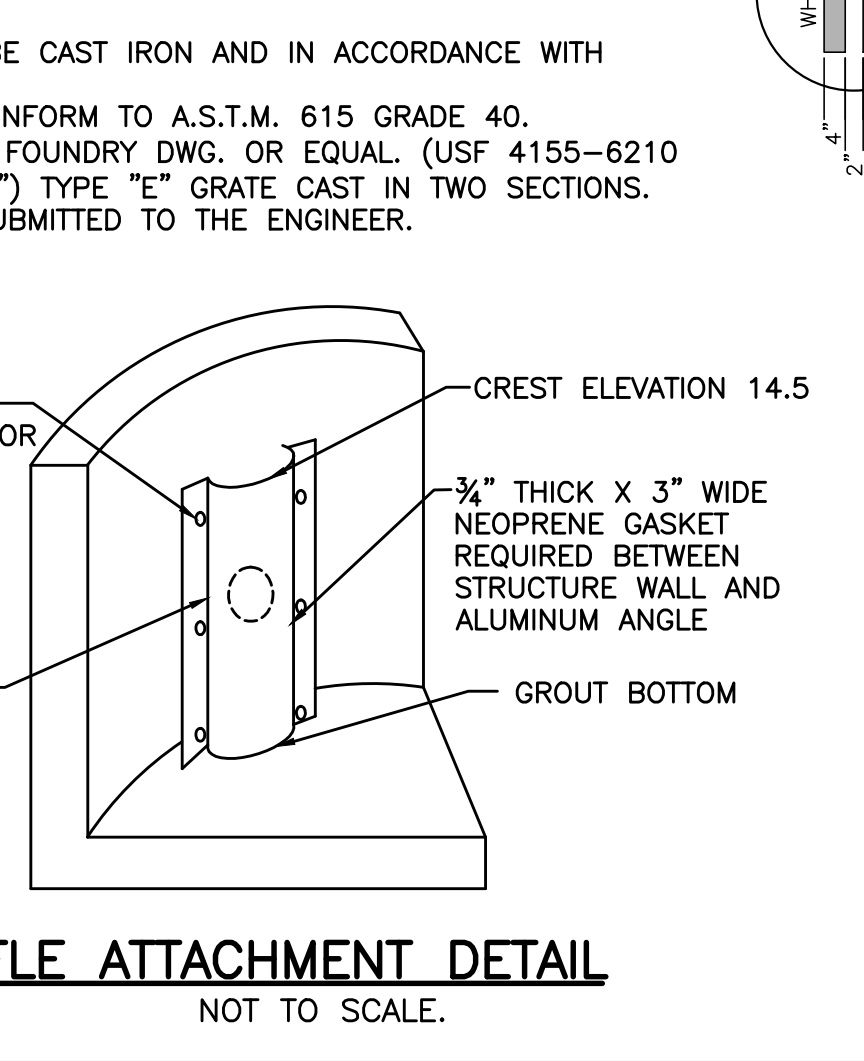
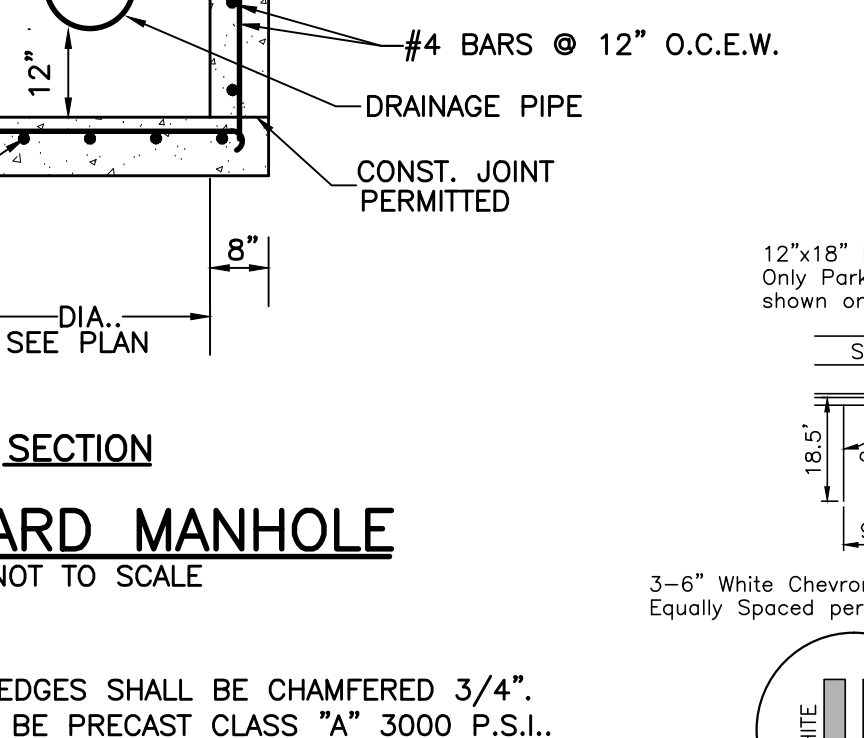
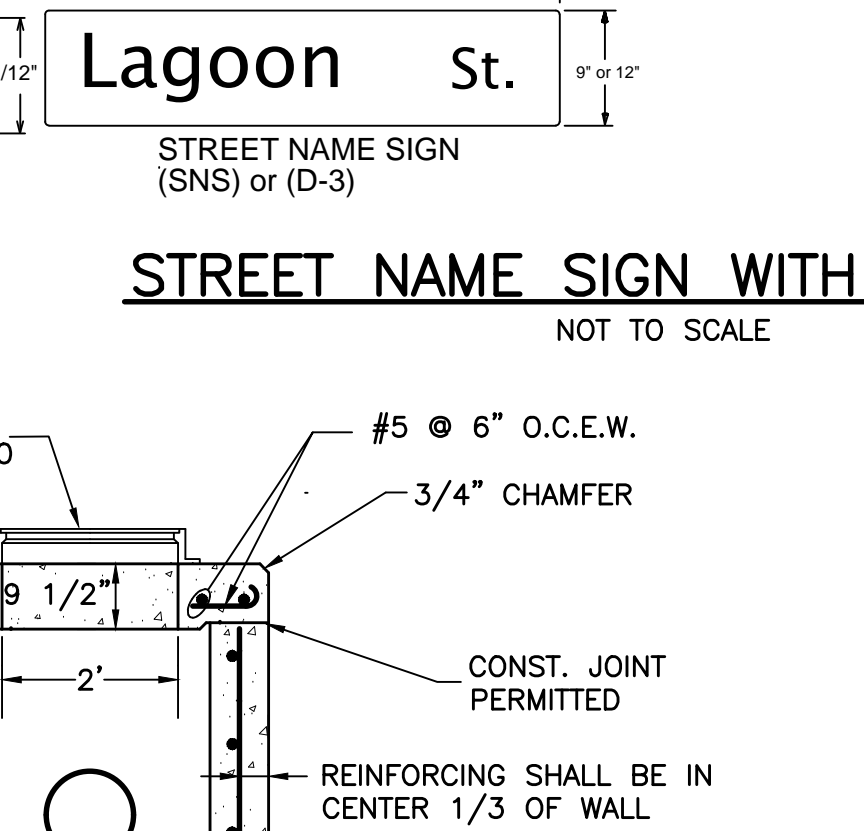
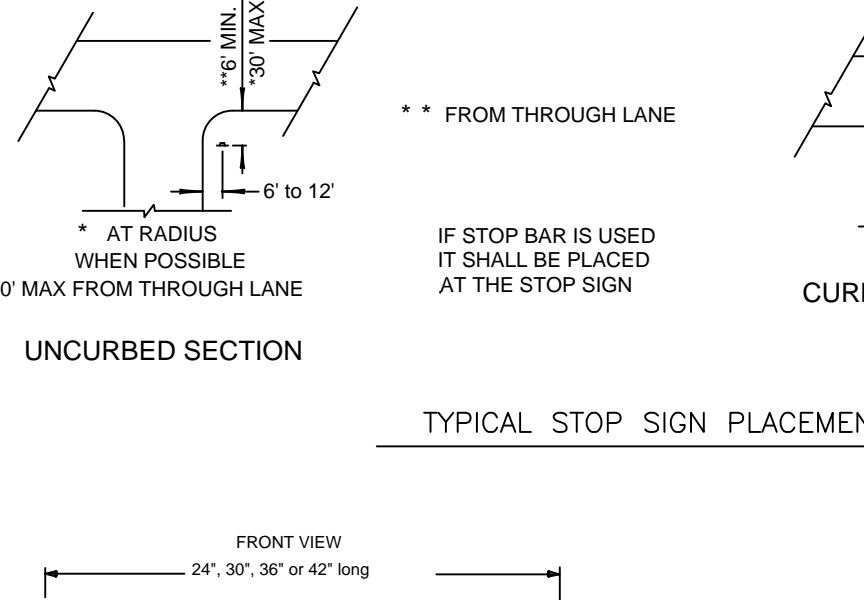


ISOMETRIC VIEW

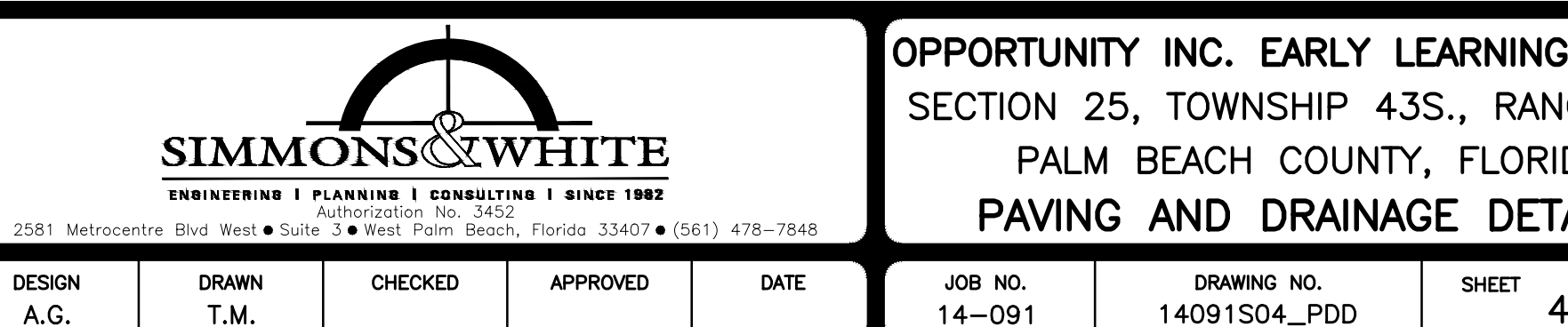
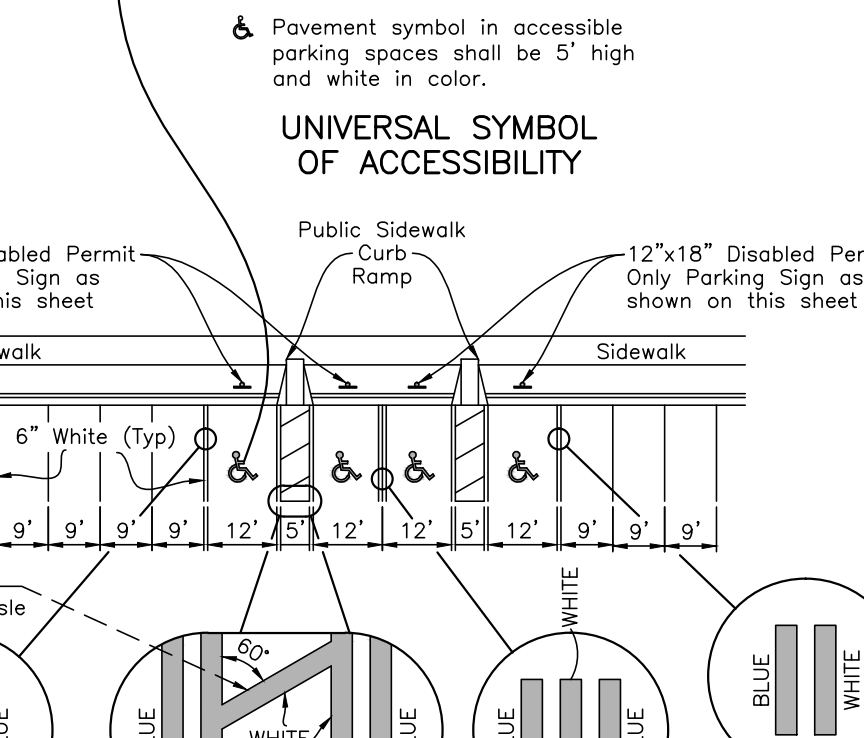
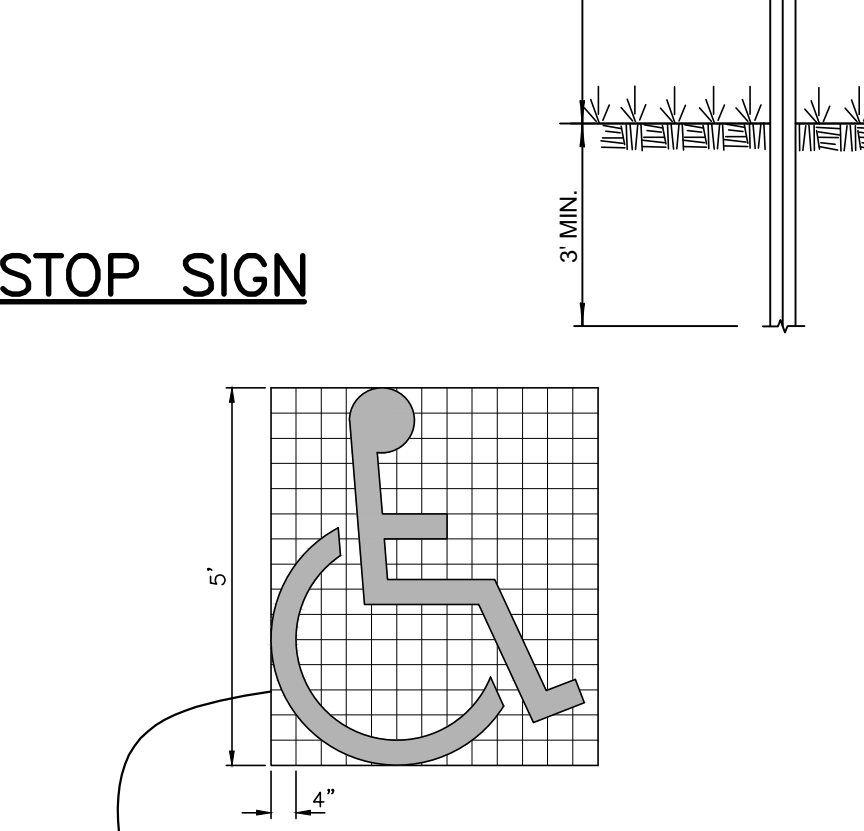
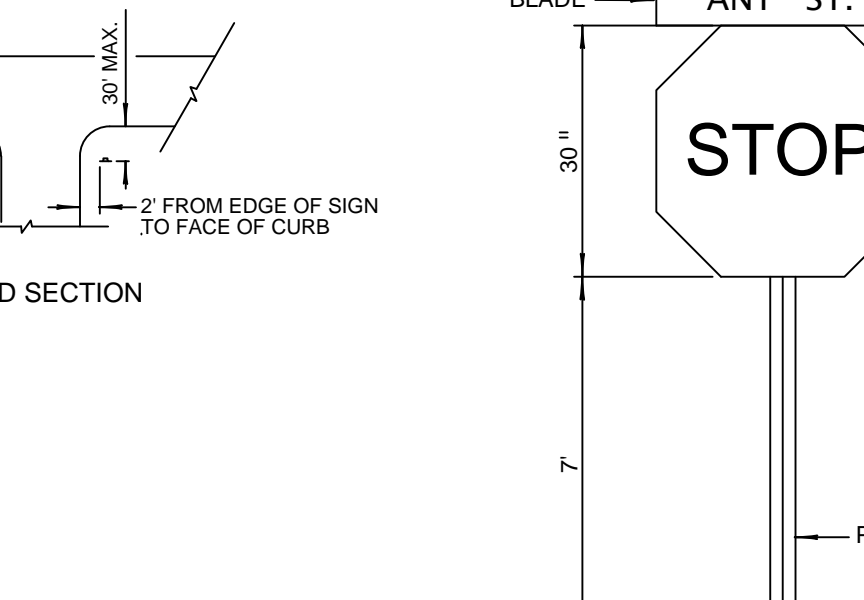
- GENERAL SPECIFICATIONS:**
- FLAT BLADE: ALCOA #86054-6063-T6 ALLOY, ETCHED, DEGREASED WITH #1200 ALODINE FINISH WITH #3877 GREEN HIGH INTENSITY BACKGROUND AND EQUAL DIMENSIONS - 9" & 12" MIN. H. 24", 30", 36" AND 42" L. LETTERS: NAME - 6" UPPERCASE WITH 4.5" LOWERCASE & 9" UPPERCASE WITH 6.75" LOWERCASE, SERIES "B" #3870 HIGH INTENSITY (SILVER) OR EQUAL - SUFFIX - 4.5" POST: STEEL FLANGED CHANNEL POST 3 LBS. PER FOOT WITH BAKED GREEN ALKYL OR GALVANIZED FINISH PER A.S.T.M. -A-123 WITHOUT ANCHOR PLATES. SQUARE POST PER FOOT INDEX 11860. BRACKETS SHALL BE ATTACHED FIRMLY ON STANDARD SQUARE TUBE OR U-CHANNEL POSTS BY MEANS OF (2) 3/8" DIAMETER HEX HEAD BOLTS. STOP SIGN: R1-1 MUTCD - (HIGH INTENSITY) LOCATION: ONE PER INTERSECTION AS INDICATED ON THE PLANS. POLICY: 9" BLADES WITH 6" UPPER CASE WITH 4.5" LOWERCASE LETTERS FOR TWO LANE ROADS WITH A SPEED LIMIT UNDER 45 MPH 12" BLADES WITH 9" UPPERCASE WITH 6.75" LOWERCASE LETTERS FOR: -THOROUGHFARE ROADS FOUR LANES OR WIDER, -TWO LANE ROADS WITH A POSTED SPEED LIMIT OF 45 MPH OR MORE. ONLY ONE BLADE WILL BE USED INDICATING THE SIDE STREET NAME.



STEEL FLANGED CHANNEL POST DETAILS



STEEL SQUARE TUBE POST DETAILS



9/21/2016
BID SET