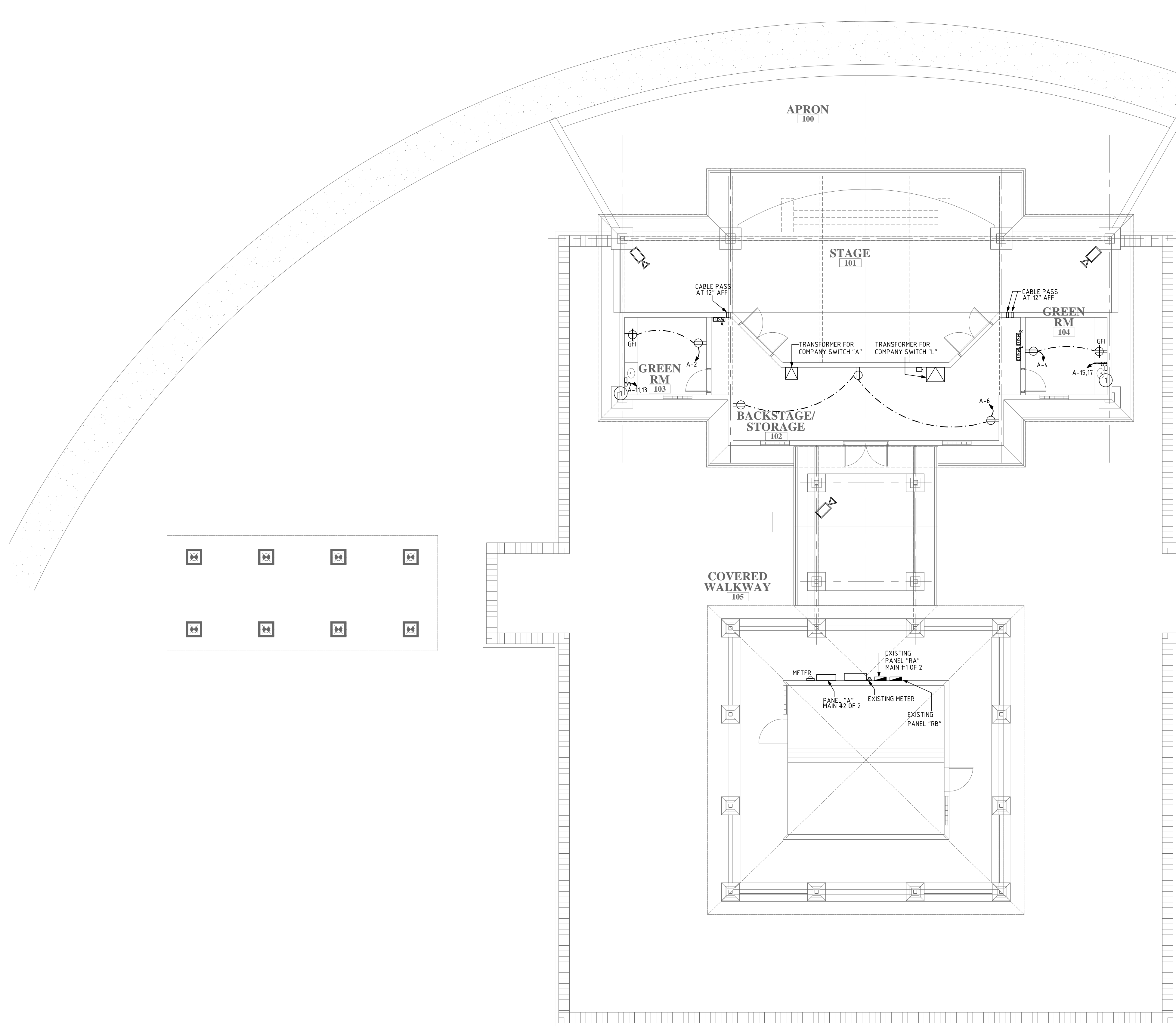


X:\2016 Projects\REG\616028_Royal Palm Beach Commons Amphitheatre\MEP\Commons Park\1617-26\CTV\6028_E1.dwg, 8/22/2016 1:01:59 PM, Chamyra, DWG to PDF.pc3



POWER IN
100 AMP, 3 PHASE, 5 WIRE
120/208 VOLTS

COMPANY SWITCH
[CSW] A

POWER IN
200 AMP, 3 PHASE, 5 WIRE
120/208 VOLTS

COMPANY SWITCH
[CSW] L

POWER IN
100 AMP, 3 PHASE, 5 WIRE
120/208 VOLTS

COMPANY SWITCH
[CSW] R

PERFORMANCE LIGHTING SYSTEM

- Lighting system power:
 - A dedicated 1125VA transformer to feed only the performance lighting company switch is required.
 - The transformer shall be k13 rated.
 - The transformer shall be located backstage.
 - All neutral feed conductors shall be sized at 200% of the phase conductors.
 - For conductor sizing and conduit fill all neutral feed conductors are considered current carrying conductors.
- The lighting transformer will feed the following:
 - There is one performance lighting company switch ([CSW-A]) back stage left.
 - The company switch requires a 200 amper per phase, three phase, 120/208 Volt 5 wire feed.
- Company switch data:
 - The company switch will be provided by the electrical contractor.
 - The panel will be located in the stage area.
 - The panel shall be a NEMA-type 1 enclosure suitable for outdoor use.
 - The company switch will have a main breaker which is rated at 200 amper +45% etc.
 - The panel is wall mounted.
 - The panel is 21" wide, 15" deep and 37" high.
 - The panel is configured for bottom access of feeder power.

AUDIO SYSTEM

1. Audio Video Power:

- A dedicated 450VA transformer to feed only the theatre sound company switch is required.
- The transformer shall be k13 rated.
- The transformer shall be located backstage.
- All neutral feed conductors shall be sized at 200% of the phase conductors.
- For conductor sizing and conduit fill all neutral feed conductors are considered current carrying conductors.

- The lighting transformer will feed the following:
- There is one theatre sound lighting company switch ([CSW-R]) back stage left.
- The company switch requires a 100 amper per phase, three phase, 120/208 Volt 5 wire feed.
- Company switch data:
- The company switch will be provided by the electrical contractor.
- The panel will be located in the stage area.
- The panel shall be a NEMA-type 1 enclosure suitable for outdoor use.
- The company switch will have a main breaker which is rated at 100 amper +45% etc.
- The panel is wall mounted.
- The panel is 21" wide, 15" deep and 37" high.
- The panel is configured for bottom access of feeder power.

PERFORMANCE RIGGING

1. Rigging Power:

- A dedicated company switch to feed only the performance rigging is required.
- There is one performance rigging company switch ([CSW-R]) back stage left.
- The company switch requires a 100 amper per phase, three phase, 120/208 Volt 5 wire feed.

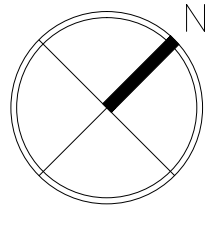
- Company switch data:
- The company switch will be provided by the electrical contractor.
- The panel will be located in the back stage area.
- The panel shall be a NEMA-type 1 enclosure suitable for outdoor use.
- The company switch will have a main breaker which is rated at 100 amper +45% etc.
- The panel is wall mounted.
- The panel is 21" wide, 15" deep and 37" high.
- The panel is configured for bottom access of feeder power.

THEATRICAL DEVICE LEGEND	
[CSW] A	- COMPANY SWITCH AUDIO (LEX POWERGATE)- - PROVIDED BY ELECTRICAL CONTRACTOR, - SURFACE MOUNT ON WALL - DIMENSIONS D10" X W21" X 37"
[CSW] L	- COMPANY SWITCH AUDIO (LEX POWERGATE)- - PROVIDED BY ELECTRICAL CONTRACTOR, - SURFACE MOUNT ON WALL - DIMENSIONS D10" X W21" X 37"
[CSW] R	- COMPANY SWITCH AUDIO (LEX POWERGATE)- THEATRICAL RIGGING - PROVIDED BY ELECTRICAL CONTRACTOR, - SURFACE MOUNT ON WALL - DIMENSIONS D10" X W21" X 37"

KEY NOTES	
1	PROVIDE DISCONNECT SWITCH FOR INSTAHOT. COORDINATE EXACT LOCATION AND REQUIREMENTS WITH SUPPLIER AND OWNER PRIOR TO ROUGH-IN.

CONTRACTOR SHALL VERIFY ALL REQUIREMENTS, LOCATION OF EQUIPMENT, WATTAGE, AMPERAGE, MOUNTING, ETC. WITH AUDIOVISUAL EQUIPMENT SUPPLIER, OWNER, AND ARCHITECT PRIOR TO ROUGH-IN.

1 POWER PLAN
1/8" = 1'-0"



PROGRESS OR CHECK SETS, BY THEIR NATURE, MAY BE INCOMPLETE AND ARE NOT TO BE USED FOR BIDDING OR CONSTRUCTION. CONTRACTOR RECOGNIZES HIS SOLE RESPONSIBILITY TO INCLUDE ALL CONTINGENCIES FOR DESIGN AND INSTALLATION TO MEET THE PROJECT REQUIREMENTS IN ANY PRICING EXERCISE.

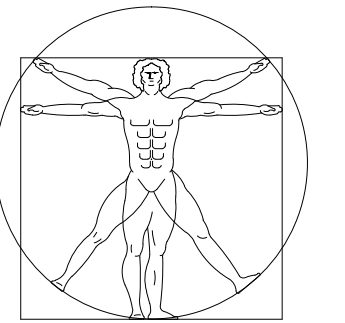
PRIOR TO SUBMITTING THE BID, THE CONTRACTOR SHALL FIELD VERIFY ALL EXISTING CONDITIONS AND INFORM THE ARCHITECT AND THE ENGINEER OF ANY DISCREPANCY BETWEEN THESE DOCUMENTS AND THE EXISTING CONDITIONS AND SHALL INCLUDE IN THE BID TO CORRECT THE SAME AS DIRECTED. THE ENGINEER AND THE ARCHITECT, ARE NOT RESPONSIBLE FOR ANY ADDITIONAL COSTS RESULTING FROM VERIFIABLE EXISTING CONDITIONS DISCOVERED AFTER CONTRACT HAS BEEN AWARDED. NO CHANGES SHALL BE MADE TO THESE PLANS WITHOUT PRIOR APPROVAL FROM THE ENGINEER OF RECORD. ALL CHANGES SHALL BE SUBMITTED FOR REVIEW PRIOR TO INSTALLATION. NOT FOR BID UNTIL PERMIT HAS BEEN ISSUED.

PROGRESS SET: 08/22/16

FAE CONSULTING

700 WEST HILLSBORO BLVD. - BLDG. #1, SUITE 204
DEERFIELD BEACH, FLORIDA 33441
TEL: (561) 391-9292 FAX: (561) 391-9898
CERTIFICATE OF AUTHORIZATION NO. 28107
LIRIBILA IAPRANTE, P.E. LICENSE #728122
STEPHEN F. ROLLIN, P.E. LICENSE #36428
DONALD H. AUSTIN, JR., PE LICENSE #60651
JASON BARBER, P.E. LICENSE #73050
EMAIL: INFO@FAECONSULTING.COM
DESIGNED BY: RB/SK/JB PM: BJ P/N 16028

REG
ARCHITECTS
INTERIORS
PLANNERS
INCORPORATED



EST. 1988
RICK GONZALEZ, A.I.A.
PRESIDENT AR-001472
300 CLEMATIS STREET
WEST PALM BEACH
FLORIDA 33401
PH: (561) - 659 - 2383
FAX: (561) - 659 - 5546
www.regarchitects.com

CORPORATION NUMBER
AA-0002447

**AMPHITHEATRE
at
COMMONS
PARK**

11600 POINCIANA BLVD.
ROYAL PALM BEACH, FL 33411

REVISIONS	NO.
	▲
	▲
	▲
	▲

DATE 06-30-16

SCALE AS NOTED

DRAWN RB/FR/JS

CHECKED DA/SR

REG No. 16028
© 2016

OWNERSHIP AND USE OF THESE DOCUMENTS & SPECIFICATIONS AS INSTRUMENTS OF SERVICE ARE AND SHALL REMAIN THE PROPERTY OF THE ARCHITECT WHETHER THE PROJECT THEY ARE MADE FOR IS EXECUTED OR NOT. THEY SHALL NOT BE USED BY THE OWNER OR OTHERS ON OTHER PROJECTS OR FOR ADDITIONS TO THIS PROJECT BY OTHERS, EXCEPT BY AGREEMENT IN WRITING AND WITH APPROPRIATE COMPENSATION TO THE ARCHITECT.

POWER PLAN

E1.1