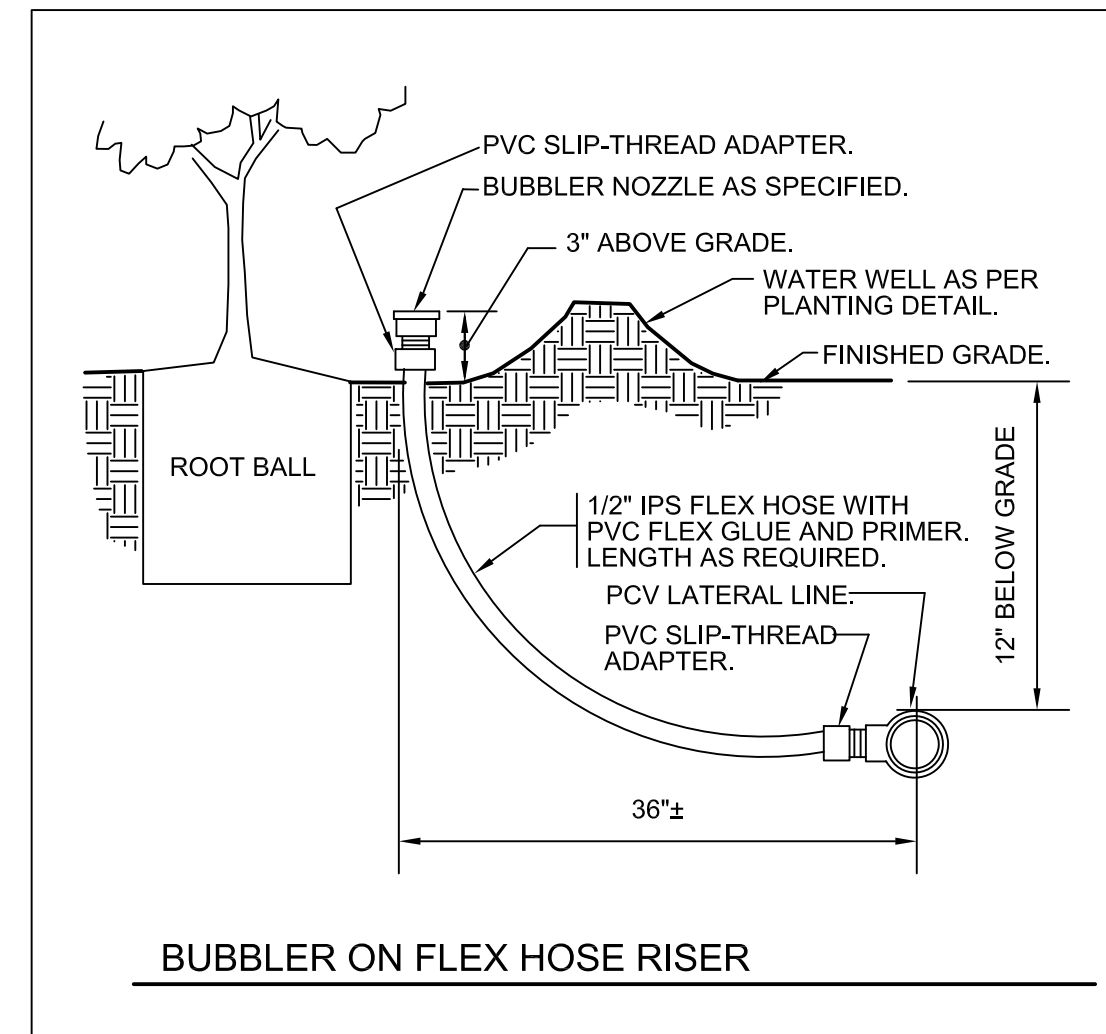


Irrigation Notes

1. IRRIGATION SYSTEM TO UTILIZE EXISTING EQUIPMENT.
2. EXISTING IRRIGATION SHALL REMAIN FULLY FUNCTIONAL THROUGHOUT THE CONSTRUCTION OF THE PROPOSED IRRIGATION SYSTEM.
3. ALL SLEEVING TO BE DONE BY IRRIGATION CONTRACTOR.
4. LANDSCAPED AREAS MAY UTILIZE 1/2" P.V.C. RISERS TO INSURE 100% COVERAGE. ALL RISERS INSTALLED ARE TO BE PAINTED BLACK.
5. MAIN LINE SHALL BE LOCATED IN SAME TRENCH AS MIST HEADS WHERE POSSIBLE.
6. ALL WIRE SPLICES ARE TO UTILIZE WATERTIGHT CONNECTIONS AND SHALL BE LOCATED AT THE VALVE.
7. THE CONTRACTOR SHALL RUN ADDITIONAL SPARE WIRES IN EACH DIRECTION TO EACH END OF THE MAIN FOR FUTURE USE.
8. CONTROL WIRING: 24 VOLT SOLID SINGLE STRAND COPPER UL APPROVED FOR DIRECT BURIAL. MINIMUM WIRE SIZE: 14 GAUGE CONTROL WIRES & 12 GAUGE FOR COMMON WIRES.
9. NO LATERAL LINES LESS THAN 3/4" DIAMETER MAY BE USED.
10. THE CONTRACTOR SHALL MAKE ALL ADJUSTMENTS TO THE IRRIGATION SYSTEM TO INSURE 100% COVERAGE AS WELL AS ELIMINATE ANY POTENTIAL OVERSPRAY.
11. ALL VALVES ARE TO BE LOCATED WITHIN TWO FEET OF THE MAIN LINE AT THE INDICATED AREAS.
12. DO NOT SCALE PLAN FOR EXACT HEAD LOCATION.
13. ALL MATERIALS SPECIFIED ON THIS PLAN CAN BE REPLACED WITH EQUAL MATERIAL UPON OWNERS APPROVAL.

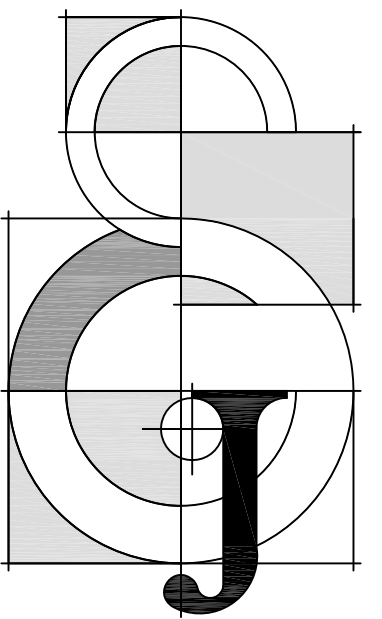
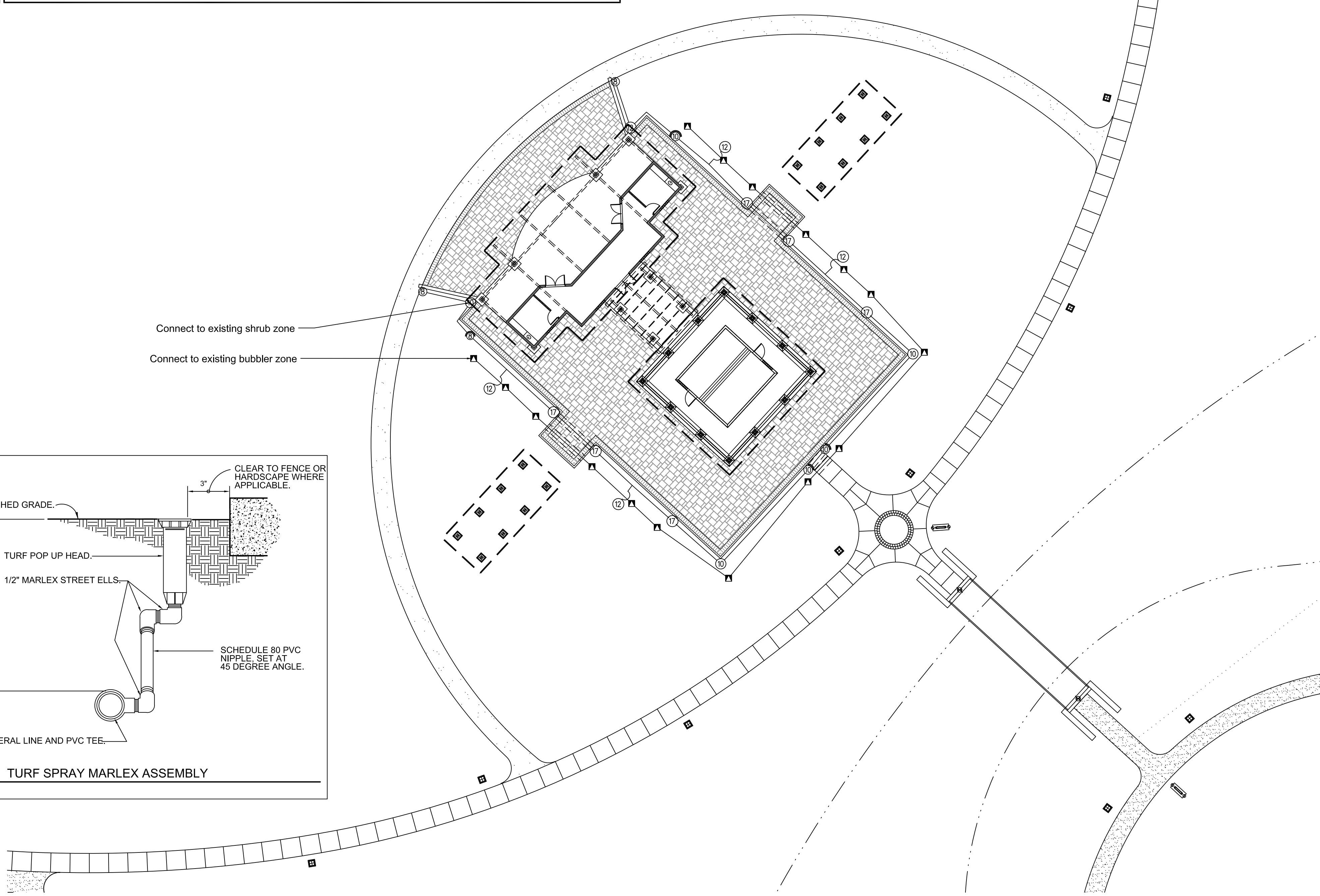
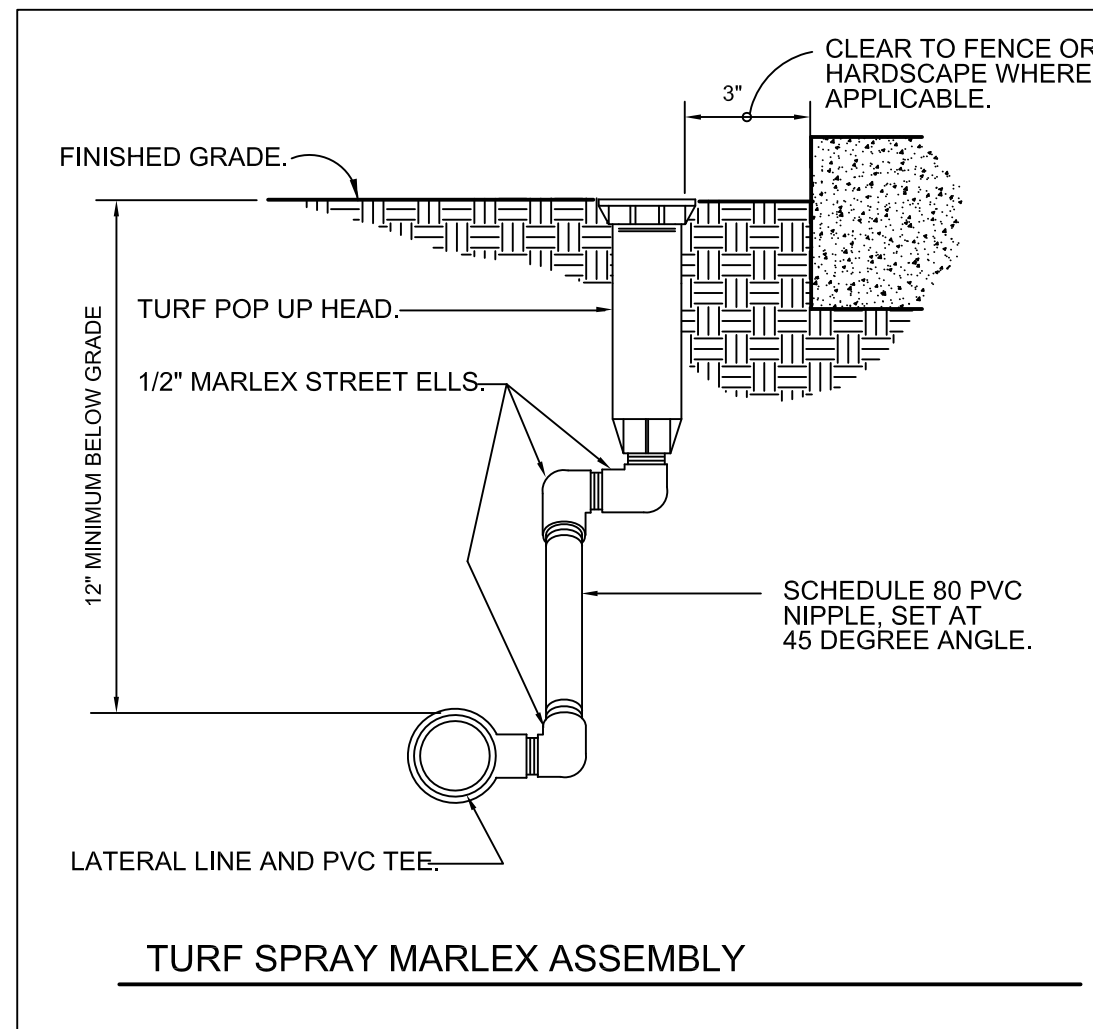


IRRIGATION SCHEDULE

SYMBOL	MANUFACTURER/MODEL/DESCRIPTION	QTY	PSI
Q T H TT TO F	Toro 570S-PC 5 Series Shrub Spray, Fixed Riser, with a Zero Flush Seal. 1/2" Female-Threaded Inlet. Ideal for small to medium landscape areas.	2	30
Q T H TT TO F	Toro 570S-PC 8 Series Shrub Spray, Fixed Riser, with a Zero Flush Seal. 1/2" Female-Threaded Inlet. Ideal for small to medium landscape areas.	2	30
Q T H TT TO F	Toro 570S-PC 10 Series Shrub Spray, Fixed Riser, with a Zero Flush Seal. 1/2" Female-Threaded Inlet. Ideal for small to medium landscape areas.	4	30
Q T H TT TO F	Toro 570S-PC 12 Series Shrub Spray, Fixed Riser, with a Zero Flush Seal. 1/2" Female-Threaded Inlet. Ideal for small to medium landscape areas.	1	30
Q T H TT TO F	Toro 570S-PC 15 Series Shrub Spray, Fixed Riser, with a Zero Flush Seal. 1/2" Female-Threaded Inlet. Ideal for small to medium landscape areas.	2	30
Q T H TT TO F	Toro 570S-PC ADJ Shrub Spray, Fixed Riser, with a Zero Flush Seal. 1/2" Female-Threaded Inlet. Ideal for small to medium landscape areas.	22	30
2SST 4SST 4SST 4SST	Toro 570S-PC Shrub Strip Spray Shrub Spray, Fixed Riser, with a Zero Flush Seal. 1/2" Female-Threaded Inlet. Ideal for small to medium landscape areas.	6	30
25 50 10 20	Hunter AFB Adjustable Flow Bubbler, 1/2" FIPT, stainless steel screw adjustment.	24	30

SYMBOL	MANUFACTURER/MODEL/DESCRIPTION	QTY	PSI
1.5	Hunter PGP-04 Turf Rotor, 4.0" Pop-Up. Adjustable to Full Circle.	10	35

SYMBOL	MANUFACTURER/MODEL/DESCRIPTION	QTY
-----	Irrigation Lateral Line: PVC Schedule 40	1,575 l.f.
-----	Pipe Sleeve: PVC Schedule 40 Typical pipe sleeve for irrigation pipe. Pipe sleeve size shall allow for irrigation piping and their related couplings to easily slide through sleeving material. Extend sleeves 18 inches beyond edges of paving or construction.	70.6 l.f.



Jon E. Schmidt and Associates
Landscape Architecture & Site Planning
2247 Palm Beach Lakes Blvd., Suite 101
West Palm Beach, Florida 33409
Tel. (561) 684-6141, Fax. (561) 684-6142
E-mail: jschmidt@jesla.com
Website: www.jesla.com
License No.: LC26000232

Royal Palm Beach Amphitheatre

The Village of Royal Palm Beach, Florida

Date: 08/18/16
Scale: 1" = 20'-0"
Design By: CWP
Drawn By: CWP
Checked By: Jes
File No. 119.33
Job No. 16-51

REVISIONS / SUBMISSIONS

NO.	DESCRIPTION	DATE

Irrigation Plan

IR-3 of 3

