

Jon E. Schmidt and Associates
Landscape Architecture & Site Planning
2247 Palm Beach Lakes Blvd., Suite 101
West Palm Beach, Florida 33409
Tel. (561) 684-6141 • Fax. (561) 684-6142
E-mail: jschmidt@jesla.com
Website: www.jesla.com
License No.: LC2600232

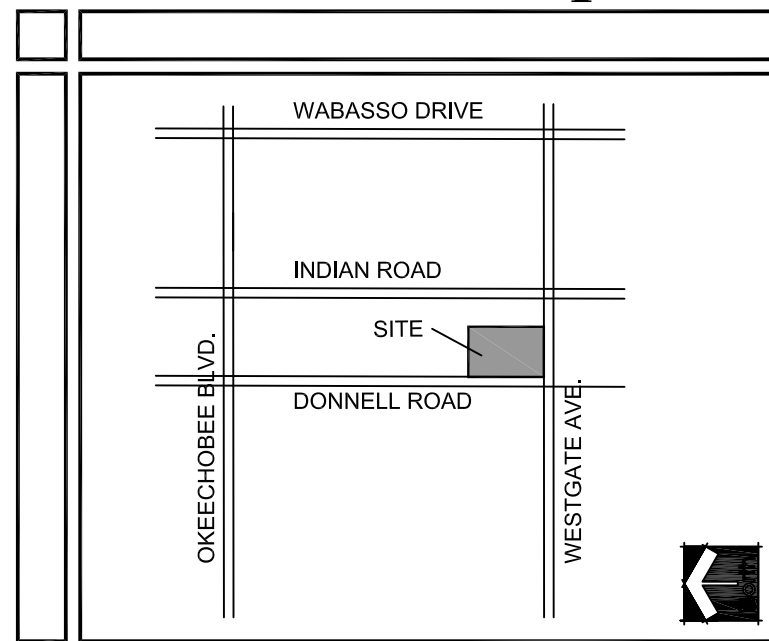
Opportunity Inc. Early Learning Center Palm Beach County, Florida

Date: 06/02/16
Scale: 1" = 20'-0"
Design By: MLD
Drawn By: MLD
Checked By: Jes
File No. 703.01
Job No. 14-47

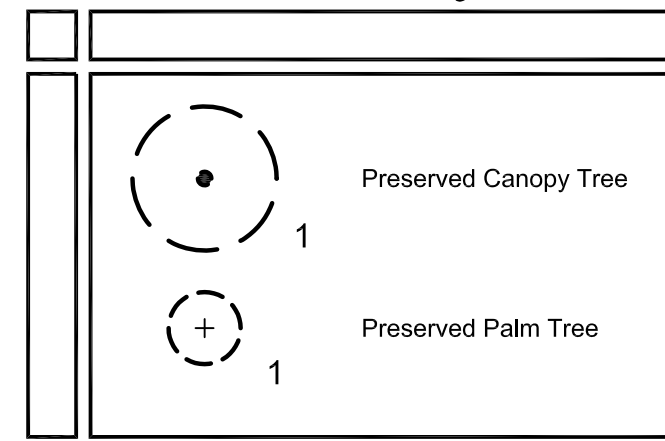
REVISIONS / SUBMISSIONS
09/19/16 Updated Civil

Landscape Plan
LP-2 of 3

Location Map



Tree Key



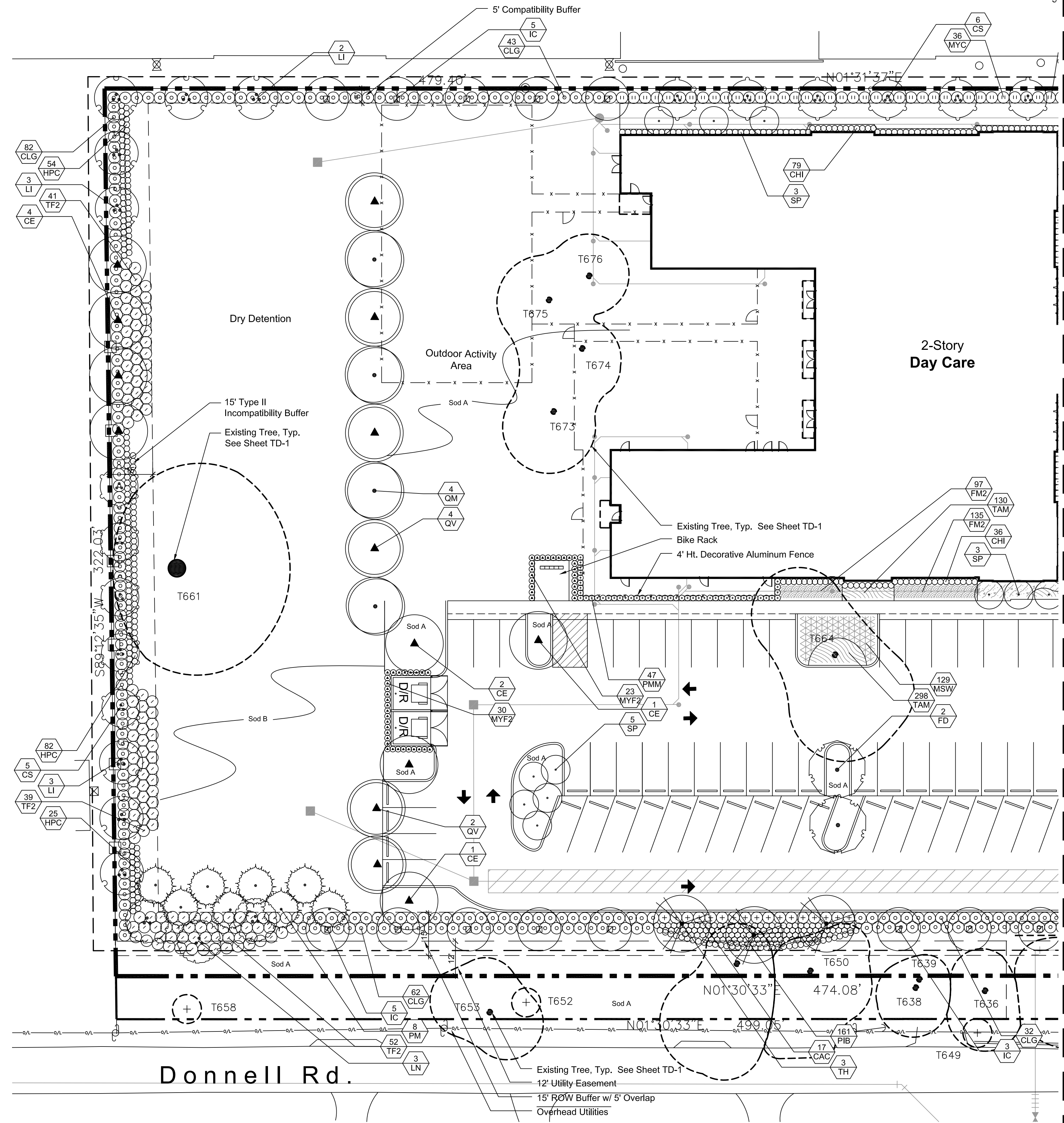
Plant List

TREES	CODE	QTY	BOTANICAL NAME / COMMON NAME	CONTAINER	CALIPER	HEIGHT	SPREAD
	CE	8	Conocarpus erectus / Green Button Wood* Single Straight Trunk, 5' CT Min. No Low Crotch	N/A	2.5" Cal	12'	6'
	CS	12	Conocarpus erectus sericeus / Silver Button Wood* Multi Trunk, Min. 5 Trunks, Min. 5' CT	N/A	2.5" Cal	12'	6'
	FD	7	Filicium decipiens / Japanese Fern Tree* Single Straight Trunk, Min 5' CT	N/A	2.5" Cal	12'	6'
	IC	25	Ilex cassine / Dahoon Holly* Single Straight Trunk, Min 5' CT	N/A	2.5" Cal	12'	6'
	LI	9	Lagerstroemia indica / Tuscarora / Tuscarora Grape Myrtle* Multi-Trunk, Min. 5' CT	N/A	2.5" Cal	12'	6'
	LN	13	Lagerstroemia x 'Natchez' / Natchez Grape Myrtle* Multi-Trunk, 5' Min. CT, Matched, White Flowering	N/A	2.5" Cal	12'	6'
	QV	6	Quercus virginiana / Southern Live Oak* Single Straight Trunk, Min. 5' CT, No Low Crotch	N/A	2.5" Cal	12'	6'
	TH	5	Tabebuia heterophylla / Pink Tabebuia* Single Straight Trunk, No Low Crotch, Min. 6' CT	N/A	2.5" Cal	12'	6'
	PM	8	Pinus elliottii var. densa / South Florida Slash Pine* Single Straight Trunk, 5' CT, For Mitigation	N/A	2"-3" Cal	10'-16' OA	4'-6'
	QM	4	Quercus virginiana / Southern Live Oak* Single Straight Trunk, Min. 5' CT, For Mitigation	N/A	2.5" Cal	12'	6'
	SP	27	Sabal palmetto / Cabbage Palmetto* Slack Trunk, Staggered Heights, Hurricane Cut, Straight Trunks	N/A		12'-18' CT	N/A
	VM1	9	Veitchia montgomeryana / Montgomery Palm 'Single Trunk' Single Trunk, No Scared Trunks, Matched	N/A	N/A	12' C.T.	10'
	VM2	2	Veitchia montgomeryana / Montgomery Palm + Double Trunk, Matched, No Scared Trunks	N/A	N/A	15' C.T.	10'
	CAC	31	Capparis cynophallophora / Jamaican Caper* Full To Base	7 Gal. Min.	48" o.c.	24"	24"
	CHI	153	Chrysobalanus icaco / Coco Plum* Full to Base	3 Gal. Min.	24" o.c.	18"	18"
	CLG	363	Clusia guttifera / Small-Leaf Clusia* Full to Base	7 Gal. Min.	48" o.c.	36"	24"
	CAO	6	Crinum augustum / Queen Emma / Queen Emma 'Crinum Lily' Full, Matched	7 gal. min.	48" o.c.	36"	36"
	FMG	109	Ficus microcarpa 'Green Island' / Green Island Ficus + Full	3 Gal. Min.	24" o.c.	18"	18"
	HPC	380	Hamelia patens 'Compacta' / Dwarf Firebush* Full	3 Gal. Min.	24" o.c.	18"	18"
	MYF2	53	Myrcianthes fragrans / Simpson's Stopper* Full to Base	7 Gal. Min.	24" o.c.	36"	24"
	MYC	40	Myrica caribaea / Wax Myrtle* Full to Base	7 Gal. Min.	48" o.c.	36"	24"
	PIB	161	Plumbago auriculata 'Imperial Blue' / Plumbago* Full	3 Gal. Min.	24" o.c.	18"	18"
	PMM	81	Podocarpus macrophyllus maki / Maki Podocarpus Full	7 Gal. Min.	24" o.c.	36"	24"
	TF1	26	Tripsacum floridanum / Dwarf Fakahatchee Grass* Full To Base	3 gal. min.	24" o.c.	18"	18"
	TF2	257	Tripsacum floridanum / Dwarf Fakahatchee Grass* Full To Base	3 Gal. Min.	48" o.c.	24"	24"
	FM2	309	Ficus microcarpa 'Green Island' / Green Island Ficus + Full To Base	3 Gal. Min.	18" o.c.	12"	12"
	HAP	37	Hamelia patens 'Compacta' / Dwarf Firebush* Full	3 Gal. min	24" o.c.	18"	18"
	MSW	292	Microsorium scolopendrium / Wart Fern* Full	1 Gal. Min.	8"-10"	12"	No
	SOD B	23,214 sf	Paspalum notatum / Bahia Grass Solid Sod, Stagger Seams, Field Verify Sod Areas Prior To Bid, Sod All Disturbed Areas	sod			
	SOD A	40,982 sf	Stenotaphrum secundatum / St. Augustine Grass Solid Sod, Stagger Seams, Field Verify Sod Areas Prior To Bid, Sod All Disturbed Areas	sod			
	TAM	1,554	Trachelospermum asiaticum 'Mikima' / Mikima Jasmine* Trailing	1 Gal. Min.	12" o.c.	4"	8"
	TR2	58	Tripsacum floridanum / Dwarf Fakahatchee Grass* Full	3 Gal. Min.	24" o.c.	24"	24"

* = Florida Native / + = Drought Tolerant

Existing Tree Credit

Crown Spread of Tree	Or	Diameter of Tree at 4.5 feet Above Grade	Credits	No. of Trees	Total Points
Less than 5 feet		Less than 2 inches	0	0	0
5-9 feet		2-5 inches	1	1	1
10-19 feet		7-11 inches	2	2	4
20-29 feet		12-16 inches	3	2	6
30-39 feet		17-21 inches	4	0	0
40-49 feet		22-26 inches	5	0	0
50-59 feet		27-31 inches	6	0	0
60-69 feet		32-36 inches	7	0	0
90 feet or greater		37 inches or more	8	2	16
TOTAL POINTS					27



MATCHLINE A-A SHEET LP-1-4

